

## Camp 5

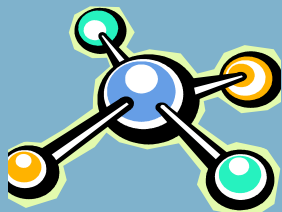
### MOLECULES AND YOU

Entering 8th graders

Dates: June 10 - 14  
June 24 - 28  
July 15 - 19

Embark on a week-long adventure to explore the molecules that are involved in everyday life.

- ◆ Perform hands-on experiments.
- ◆ Use state-of-the art research equipment.
- ◆ Learn how molecules play a role in everyday life.
- ◆ Use mathematics to collect and interpret data.
- ◆ Design your own experiments and present your results to others.
- ◆ Learn to make butter, cheese and bread.
- ◆ Explore career opportunities in chemistry and biomedical sciences.
- ◆ Learn about polymers by making slime.
- ◆ Use liquid nitrogen to make ice cream — real cool!



**UAB** THE UNIVERSITY OF  
ALABAMA AT BIRMINGHAM

## Camp 6

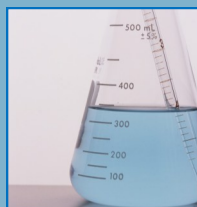
### WE'VE GOT SOLUTIONS!

Entering 8th graders

Dates: June 17 - 21  
July 8 - 12  
July 22 - 26

Spend a week exploring the wonders and magic of chemistry.

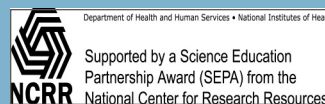
- ◆ Have pHun with acids and bases.
- ◆ Determine which dyes are in your favorite candy and how much fat is in the chips you eat.
- ◆ Enjoy hands-on fun with chemical reactions, especially some that use soda pop.
- ◆ Participate in lab demonstrations that you can explain.
- ◆ Solubility, solutes, solutions, saturated solutions, super-saturated solutions . . . learn about it!
- ◆ Design your own tie-dyed shirt with the help of chromatography.



**Application  
Deadline  
March 15, 2013**

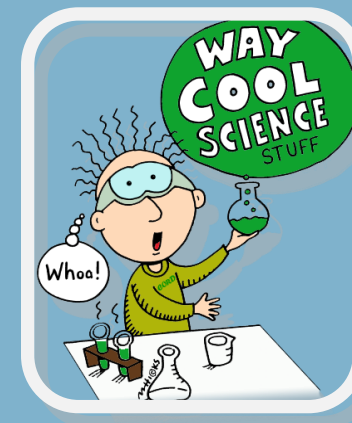
## CORD emPowering rising stars

- ◆ Camp hours are 8:30 a.m.— 4:00 p.m. daily. Camp Counselors will be on duty beginning at 7:30 a.m. in the lobby of CHSB 19 (933-19th Street South) for early drop-off.
- ◆ All children are required to bring a lunch daily except for Friday Pizza Day.
- ◆ Acceptance into CORD Camps will be based on available space and regional distribution of students.
- ◆ Each Camp is designed for students entering a specific grade level. There are No Exceptions!
- ◆ Children may attend each Camp in their grade level.
- ◆ Tuition for first week-long Camp is \$175.00. Second grade-level Camp tuition is \$75.
- ◆ **A non-refundable deposit of \$50 is required by ALL with application and will be applied toward total cost of tuition.**
- ◆ **No tuition refunds after May 31, 2013.**
- ◆ NO Credit Cards Accepted.
- ◆ All applicants will receive a Notification of Acceptance packet that will include: Camp Guidelines; and a Health and Photo Release Form that must be filled-out and returned prior to attending Camp.
- ◆ All forms and tuition are required prior to participation.
- ◆ Behavioral issues may result in dismissal from Camp.



# CORD

## Summer Science Camps 2013



## SIX EXCITING CAMPS FOR MIDDLE SCHOOL STUDENTS

UAB Center for Community OutReach Development  
5th Floor CHSB 19 933 19th Street South  
Birmingham, AL 35294-2041  
PH: (205) 934-5171 Fax: (205) 934-5158

## Camp 1

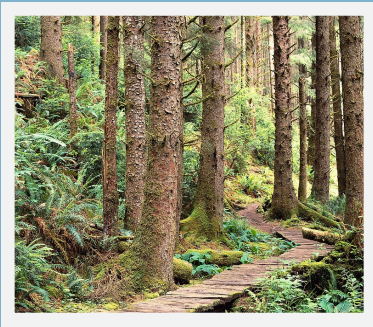
### OVER THE HILLS AND THROUGH THE VALES

Entering 6th graders

Dates: June 10 - 14  
June 24 - 28  
July 15 - 19

An outside Camp that will explore a forest to learn how changes in its plants and animals may affect your health.

- ◆ Collect and analyze data about the forest, its plants, reptiles, amphibians, and mammals.
- ◆ Use computers to mathematically analyze the data you collect and graphically present it to your fellow campers.
- ◆ Learn about pollution tolerance, dominance and species diversity.
- ◆ Discover the processes of adaptation and natural selection that aid survival.



## Camp 2

### ENVIRONMENTAL ENGINEERING AND YOUR HEALTH

Entering 6th graders

Dates: June 17 - 21  
July 8 - 12  
July 22 - 26

Be an environmental engineer for a week in this outdoor Camp.

- ◆ Use high-tech instruments to monitor air and water quality, temperature and humidity changes.
- ◆ Learn to analyze your data and develop a presentation to communicate your results.
- ◆ Gain insight into the relationship between the environment and human health.
- ◆ Understand environmental conditions that relate to your health.



## Camp 3

### DIVING INTO THE GENE POOL

Entering 7th graders

Dates: June 10 - 14  
June 24 - 28  
July 15 - 19

Dive into the gene pool and investigate the role that DNA plays in every living creature.

- ◆ Discover what makes up a cell.
- ◆ Isolate DNA from different organisms, including your own.
- ◆ Use modern molecular Biology techniques and sharpen your computer skills.
- ◆ Conduct a forensic analysis of your own DNA "fingerprint."
- ◆ By week's end, you will be well on your way to being a CSI-type sleuth.



## Camp 4

### PHYSFACTOR

Entering 7th graders

Dates: June 17 - 21  
July 8 - 12  
July 22 - 26

Put your body and brain to the test. See if you can meet the challenge in which you become the scientist and the subject.

- ◆ Discover the effects of exercise (in and out of the water) on your cardiovascular and pulmonary systems.
- ◆ Design your own experiments, collect data, plot them on the computer and analyze the results.
- ◆ Record daily activities and calculate your calorie consumption throughout the week.
- ◆ Use high tech equipment to aid your scientific explorations.
- ◆ Keep a personal activity nutrition log.



# e o r d

e m P o w e r i n g r i s i n g s t a r s