



Alabama Middleware Workshop

August 1, 2002

Sponsored by UAB and the NSF/Alabama
EPSCoR Internet2 Initiative, Grant No. 0091853



Agenda

- Welcome and overview, Sheila Sanders
- UAB Middleware Infrastructure, David Shealy
 - UAB LDAP Committee and Schema, Landy Manderson
 - UAB MS Active Directory Project, David Green
 - Moderated discussion on campuses middleware infrastructure and goals
- Lunch, Overview of National Middleware Initiative, Sandi Redman, UAH
- LDAP Enabled Applications
 - ResNet and licensed software downloads, Terry Tatum, Customer Service
 - Status of UAB PKI, Tim Brown, Infrastructure
 - WebCT using LDAP for authentication, Mike McBride, Learning Technology
 - Moderated discussion of PKI and LDAP enabled applications
- Overview of UAB Security & Privacy Policies, John Piazza, Data Officer
- Update Alabama Middleware Strategic Plan



Purpose of Workshop

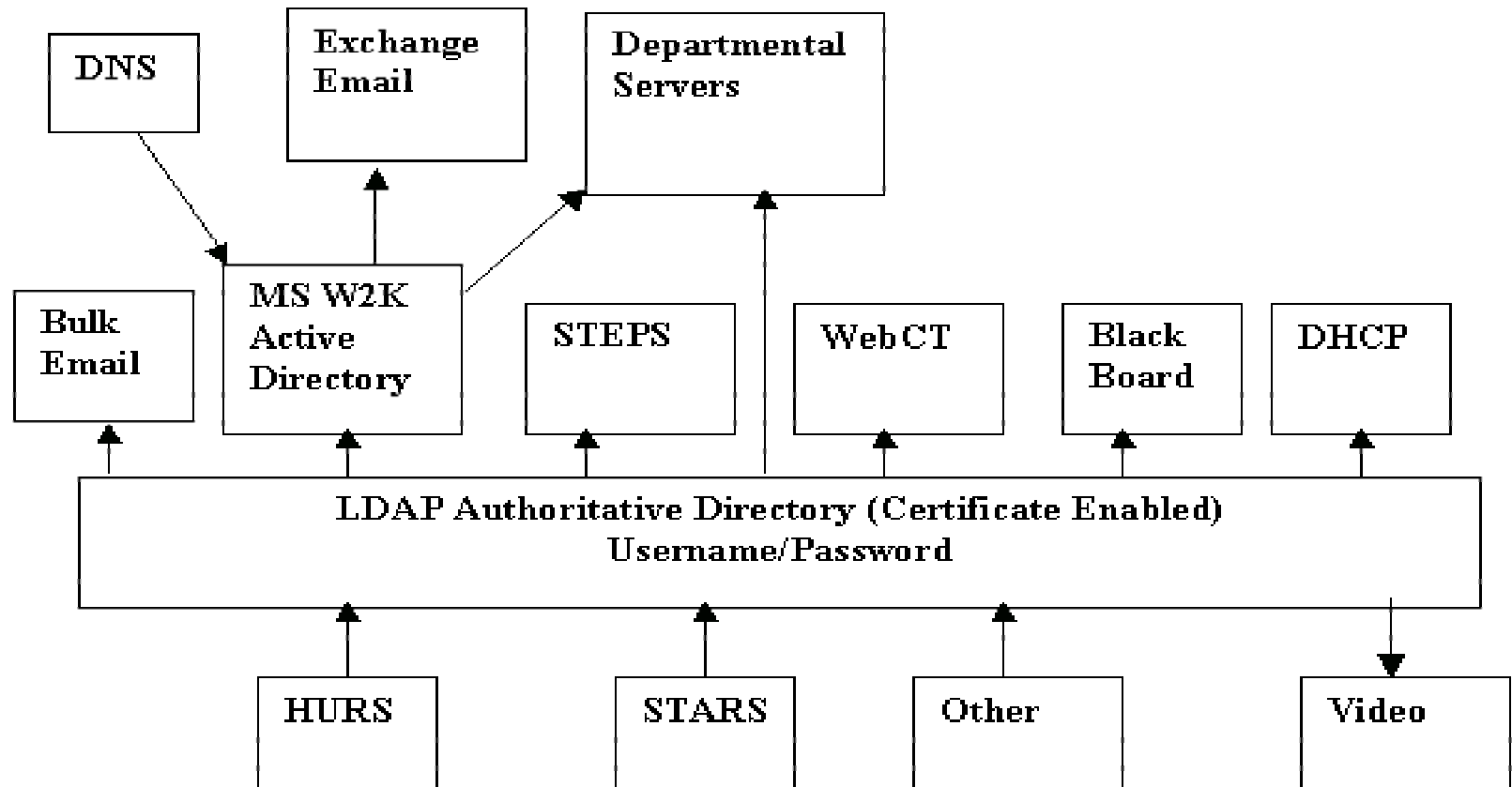
- Present work done by campuses on developing middleware infrastructure, e.g., integrated directory services and PKI;
- Discuss applications of this infrastructure;
- Prototype statewide middleware models (directories & PKI) that promote ease-of-use and appropriate security for researchers using remote resources on high performance networking infrastructure.



Some UAB IT Activities

- High Performance Network Connectivity
 - Bandwidth has increased from 13Mbps in 1998 to 910 Mbps in 2001
- Integrated Directory Services
 - Developed a central, authoritative database and directory that can be used to locate people
 - MS Active Directory Project
- UAB Public Key Infrastructure
- Desktop Video Conferencing and Digital Video
- Security, Privacy and Policy

UAB Middleware Infrastructure





EPSCoR I2 Project Goals

- Establish effective communication mechanisms for voice, video, data, and remote instrumentation (statewide infrastructure)
- Facilitate activities that help all campuses develop the infrastructure necessary to allow researchers on that campus to take advantage of the high-speed networks
- Prototype state-wide middleware models (directories and PKI) that promote ease-of-use and appropriate security for researchers utilizing remote resources on the State's high-speed networking infrastructure
- Promote the long-term viability of high-speed networking