

What is Pubget?

Pubget is a free search engine for PDFs in the life sciences. It indexes nearly 20 million life science research documents, including PubMed. You search it like you would PubMed or Google Scholar. The difference is that Pubget takes you directly to the PDF.



Pubget offers PaperPlane, a toolbar add-on that allows you to search in other databases and still get the PDF right away. PaperPlane can deliver the PDF from a single citation on many Web pages (Firefox and Safari users can retrieve entire lists of citations from many Web pages).

Pubget also offers a widget that displays an RSS feed of the latest research on a topic or a specific author on your site or in your application. It automatically updates when new papers are published.

How does Pubget search?

Pubget is built on three components:

- (1) The Search Engine:** Includes all the content in PubMed and uses a relevancy algorithm similar to PubMed. Pubget’s search index comes from both PubMed and direct connections with publishers.
- (2) The Links:** Pubget uses a proprietary “pathing engine” that constructs PDF links based on citation information. Pubget finds PDFs inside publisher sites via RSS feeds, OpenURL links, and other industry-standard sources.
- (3) The Subscriptions:** Pubget includes a “credentialing engine” that understands libraries’ subscriptions and authentication systems.

Pubget searches all of PubMed and open access journals, plus arXiv and JSTOR.

Pubget sorts results based on relevancy and date. Currently, Pubget matches direct terms without a thesaurus. In the upcoming summer release, Pubget will include thesaurus matching as well as MeSH and date limits.

Pubget vs. PubMed

Term Searched	Search Details on PubMed	# of PubMed Results	# of Pubget Results
incretins	incretins[MeSH Terms] OR "incretins"[All Fields] OR "incretins"[Pharmacological Action]	3978	1352
PINK1	PINK1[All Fields]	305	333
parkin	parkin[All Fields]	3485	4225
myocardial infarction	myocardial infarction[MeSH Terms] OR ("myocardial"[All Fields] AND "infarction"[All Fields]) OR "myocardial infarction"[All Fields]	162976	163580
heart attack	myocardial infarction[MeSH Terms] OR ("myocardial"[All Fields] AND "infarction"[All Fields]) OR "myocardial infarction"[All Fields] OR ("heart"[All Fields] AND "attack"[All Fields]) OR "heart attack"[All Fields]	167138	9697

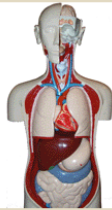
Some Caveats

Pubget does not include limits or clinical queries

Must know exact MeSH term when searching MeSH on Pubget (for example: searching “neoplasm” returns 0 results; must use “neoplasms”)

Promoting Pubget

We set up Pubget in June 2009 and did an initial publicity blitz. Throughout December 2009/January 2010, we heavily promoted Pubget through a variety of means, including announcements, newsletters, instruction sessions, and the library's liaison program. For instance, we featured it on the Resource of the Month (ROTM) blog, which received over 600 visits for this period, and the Center for Clinical & Translational Science (CTS) Research Commons blog.



Resource of the Month

Pubget: December/January Resource of the Month

December 1st, 2009 Posted in 2009, Databases & Resources

Pubget is a free search engine that links directly to PDFs of articles in the life sciences. It includes nearly 20 million life science research documents, including those in PubMed. Read the latest issue of any journal LHL licenses by clicking on it on the homepage or typing in its title followed by [latest]. Make sure to set the Pubget subscription to U of Alabama at Birmingham.

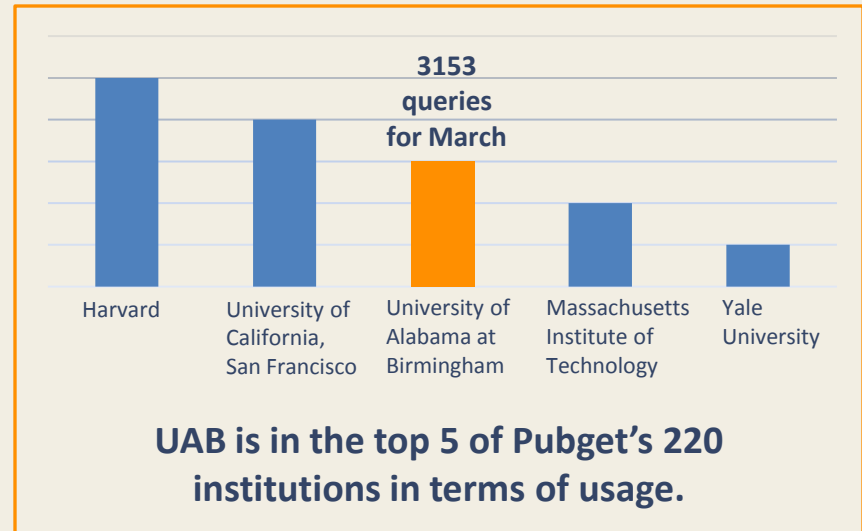
Features of Pubget includes customizations for your favorite journals, RSS feeds, article tagging, downloading to bibliographic software, and more. A free user account allows you to set up keepers and e-alerts. **Watch the video** on getting started with Pubget. Visit the **help section** for more information on searching with Pubget.

Pubget also provides PaperPlane, a tool enabling you to get the PDF right away in PubMed. **Read** more information on PaperPlane or **watch** the video on how it works.

Access **Pubget** from the **Databases & Resources** page.

If you need help or would like more information, please stop by the HUB, give us a call (205-934-2231), or send us an **email** or **chat**.

Most Active Institutions on Pubget, March 2010



UAB is in the top 5 of Pubget's 220 institutions in terms of usage.

CTS Research Commons

What can the CTS do for YOU?

Home About the Research Commons Contact Us

PubGet PaperPlane



PubGet PaperPlane

Have you tried **PubGet** to search directly for PDFs of biomedical articles indexed in PubMed or to browse the latest issues of journals UAB licenses?

When you find you need to use the more complex search options available in PubMed, you can still get access to PDFs right away by using the PubGet paper plane tool. It is simpler

- First, add the free PaperPlane bookmarklet to your browser toolbar. [Get directions](#)
- Then search PubMed. When you get your desired result(s) in PubMed,
- Click the PaperPlane link, and Pubget opens a new window and gets you the PDF.

See the [PubGet Help files](#) for more information on using PubGet or contact [UAB](#) with any questions about Pubget or PaperPlane.

Tags: [UAB](#), [Publications](#), [Web-based tools](#)

Library News

Pubget: Timesaving PDF search engine



<http://uab.pubget.com> is a new search

engine that delivers article PDFs as search results if LHL licenses the content. It includes nearly 20 million life science research documents, including those in PubMed®. Read the latest issue of any journal LHL licenses by clicking on it on the homepage or typing in its title followed by [latest]. **Pubget** offers features including customization, RSS feeds, article tagging, downloading to bibliographic software and more. Please [contact us](#) with questions or comments.

Setting Up Pubget for Your Library

Anyone can use Pubget to retrieve open access articles. But you can also activate your institution and Pubget will sync with your journal holdings, enabling your users to get full access to subscription PDFs through Pubget (not just open access PDFs).

LHL sent Pubget a Serials Solutions holdings file on initial set up. LHL later provided Pubget access to publisher admin pages enabling automatic, accurate holdings updates.

Resources

- [Pubget Help](#) and the amazing Pubget team!
- [Got PubMed? Pubget Searches and Delivers Scientific PDFs](#)
- [Analysis of Pubget—An Expedited Fulltext Service for Life Science Journal Articles](#)
- Search [YouTube](#) for tutorials
- [arXiv](#) from Cornell University

