

FELLOWSHIP

AT THE UNIVERSITY OF ALABAMA AT BIRMINGHAM (UAB) DEPARTMENT OF PEDIATRICS



UAB MEDICINE
PEDIATRICS



Children's
of Alabama

THE UAB DEPARTMENT OF PEDIATRICS FELLOWSHIP PROGRAM AT CHILDREN'S OF ALABAMA

The UAB Department of Pediatrics clinical services are provided at Children's of Alabama. Children's of Alabama is a private, not-for-profit medical center that also serves as the primary site of the UAB pediatric medicine, surgery, research, fellowship and residency programs. For more than 50 years, the partnership between UAB and Children's has provided outstanding care to the youngest, most vulnerable patients and established Birmingham as a nationally renowned center for pediatric medicine. This powerful alliance allows these two institutions to leverage their unique strengths and resources to pursue a joint mission—to offer world-class pediatric health services in an environment that fosters world-class research, excellence in medical education, and access to leading-edge treatments for pediatric illnesses and injuries.



1600 7th Avenue South | Birmingham, Alabama | 35223

WELCOME

We're very glad you're here! Thank you for your interest in our Fellowship Programs.

Throughout this booklet, we hope you'll find beneficial information that will help in your fellowship decision.

If there is something you would like to know that is not included, please contact us.



MITCH COHEN, MD

Department of Pediatrics

Chair



ANN KLASNER, MD, MPH

Pediatric Subspecialty Director

aklasner@peds.uab.edu



RONDA CHANDLER

Subspecialty Coordinator (Point of Contact)

rhandler@peds.uab.edu

TABLE OF CONTENTS

Welcome	4
Table of Contents	5
UAB Pediatrics by the Numbers	6
Birmingham by the Numbers	7
About Birmingham.....	8
Where Fellows Live	11
Overview of Fellowship Programs.....	12
Where Our Fellows Come From and Go.....	13
Child Health Investigate Forum	14
Core Educational Curriculum	15
Dixon Fellowship Award	16
Chu Family Educational Scholarship.....	17
OnBoard Birmingham	18
Pediatric Science Day	19
Quality Improvement and Patient Safety	20
Simulation Center	21
UAB Department of Pediatrics Faculty	22
Policies and Procedures	24
Initial Resident Agreement	25
Salary and Benefits	26
Benefits Overview	27
Individual Fellowship Programs	28-45
Acknowledgement	46
Notes	47

UAB PEDIATRICS BY THE NUMBERS (2015)



71,128

NUMBER OF VISITS TO
EMERGENCY MEDICINE

PEDIATRIC CRITICAL CARE
TRANSPORTS

914



201

PEDIATRIC MEDICAL
FACULTY MEMBERS

18 FELLOWSHIP PROGRAMS

59

FELLOWS

86

RESIDENTS



380
LICENSED
BEDS AND
BASSINETS



246
DAILY
AVERAGE
CENSUS



7 CONSECUTIVE
YEARS RANKED
AMONG NATION'S
BEST BY U.S. NEWS
AND WORLD REPORT



15,462
INPATIENT
ADMISSIONS



350,158
OUTPATIENT
CLINIC VISITS

BIRMINGHAM BY THE NUMBERS

2 AVERAGE
INCHES OF
ANNUAL
SNOWFALL



12
Jefferson
County
Hospitals



22
PUBLIC GOLF COURSES

23
ALABAMA
STATE PARKS

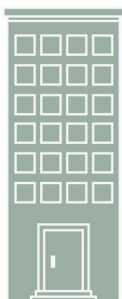

50 + SHOPPING CENTERS

62°F 
AVERAGE TEMPERATURE

117 
DAYS OF PRECIPITATION

147 MILES TO ATLANTA, GA

210 MILES TO DESTIN, FL (BEACH)

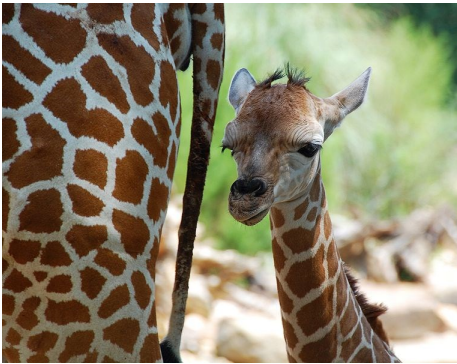


\$990
AVERAGE RENT
FOR A 2
BEDROOM
APARTMENT



500+
RESTAURANTS

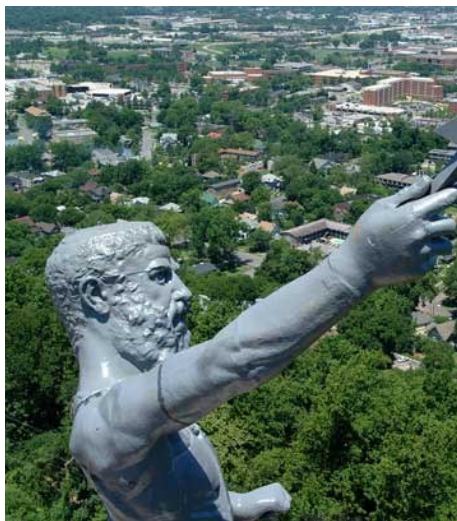
IT'S NICE TO HAVE YOU



THE BIRMINGHAM ZOO



RAILROAD PARK



VULCAN PARK



BARONS FIELD



**BIRMINGHAM
BOTANICAL
GARDENS**



**BIRMINGHAM
CIVIL RIGHTS
INSTITUTE**

It's nice to have you in

BIRMINGHAM



IN BIRMINGHAM



BARBER MOTORSPORTS PARK & MUSEUM



RUFFNER MOUNTAIN



RED MOUNTAIN PARK



ROBERT TRENT JONES GOLF TRAIL



PEPPER PLACE MARKET

It's nice to have you in
BIRMINGHAM



ABOUT BIRMINGHAM

VISIT [HTTP://WWW.UAB.EDU/MEDICINE/HOME/BIRMINGHAM](http://www.uab.edu/medicine/home/birmingham) **TO FIND OUT:**



WHERE TO LIVE



THINGS TO DO



DINING



OUTDOORS

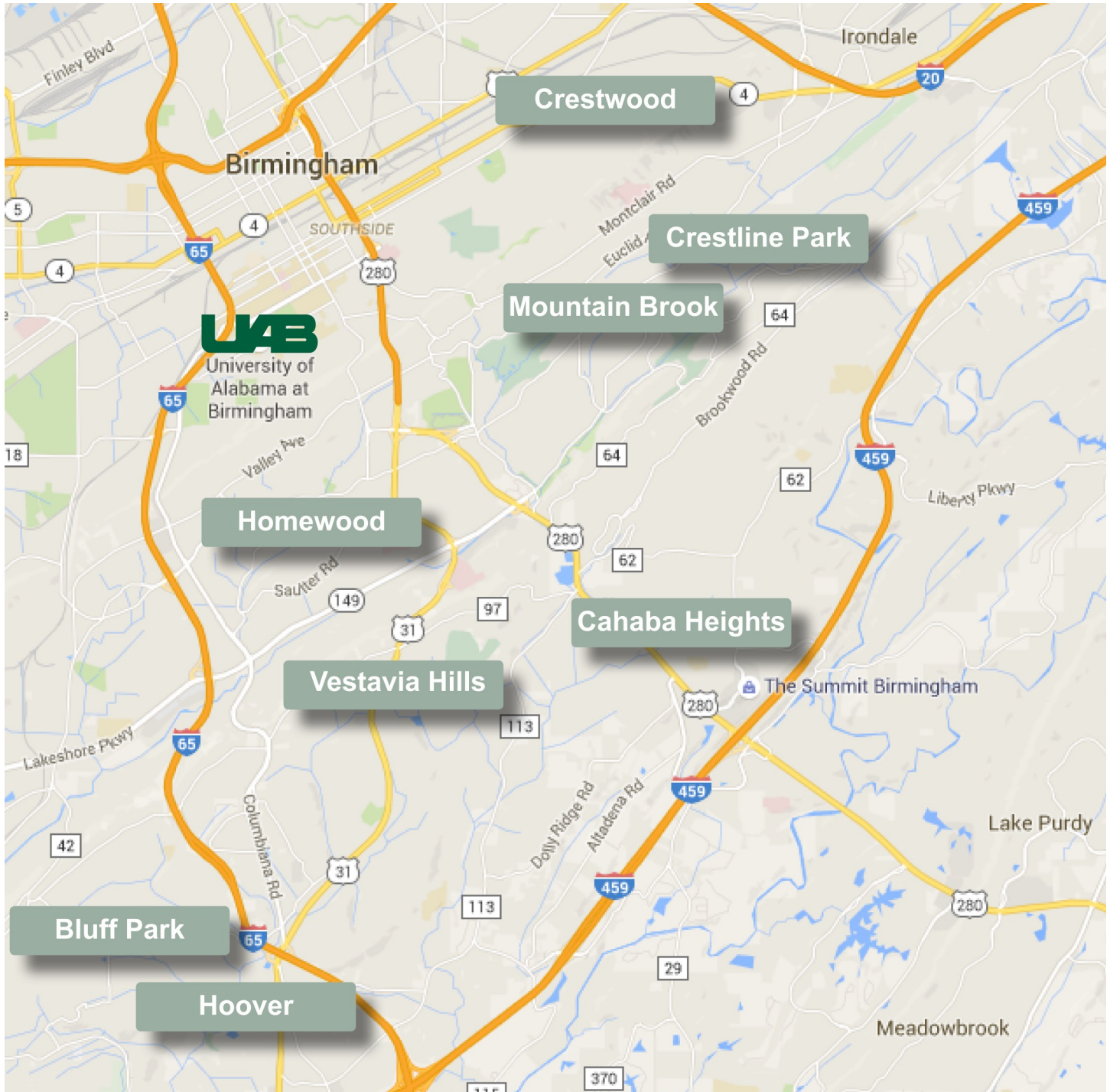


SHOPPING



NIGHTLIFE

WHERE FELLOWS LIVE



FELLOWSHIPS OVERVIEW

■ 16 ACGME APPROVED PEDIATRIC FELLOWSHIP PROGRAMS

ADOLESCENT MEDICINE

ALLERGY-IMMUNOLOGY

CARDIOLOGY

CHILD NEUROLOGY

CRITICAL CARE

EMERGENCY MEDICINE

ENDOCRINOLOGY

GASTROENTEROLOGY

HEMATOLOGY-ONCOLOGY

HOSPICE-PALLIATIVE CARE

INFECTIOUS DISEASE

NEONATOLOGY

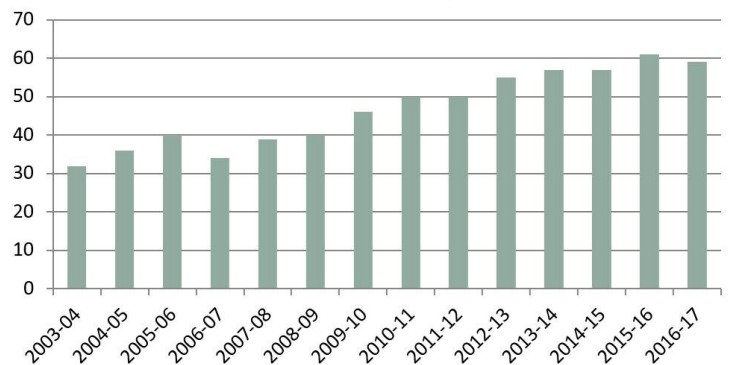
NEPHROLOGY

PULMONOLOGY

RHEUMATOLOGY

SLEEP MEDICINE

Total Fellows by Year



■ 2 NON-ACGME PEDIATRIC FELLOWSHIP PROGRAMS

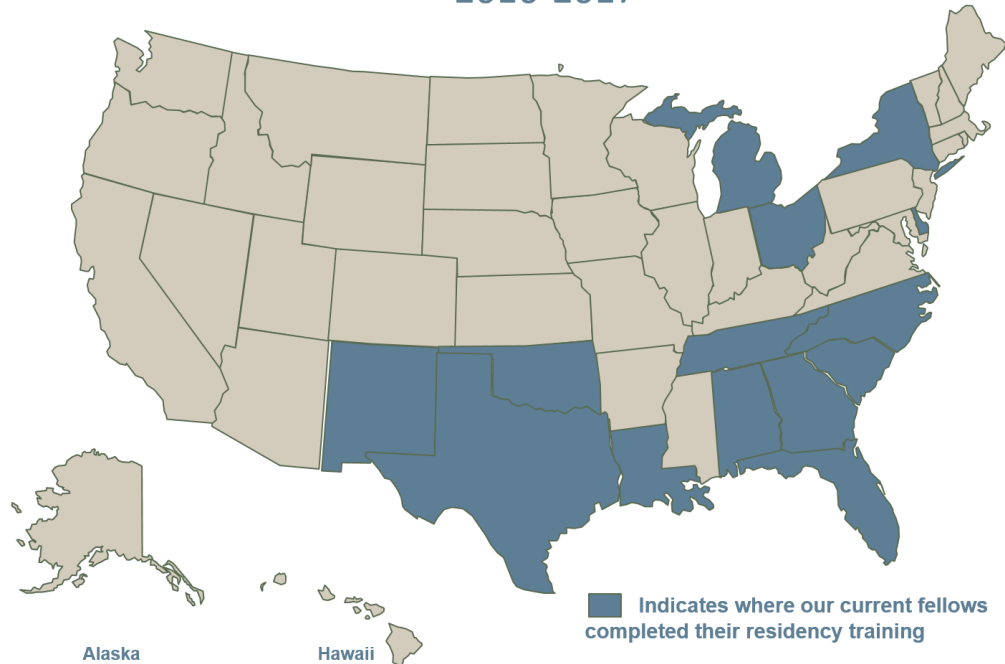
CARDIAC CRITICAL CARE

HOSPITAL MEDICINE

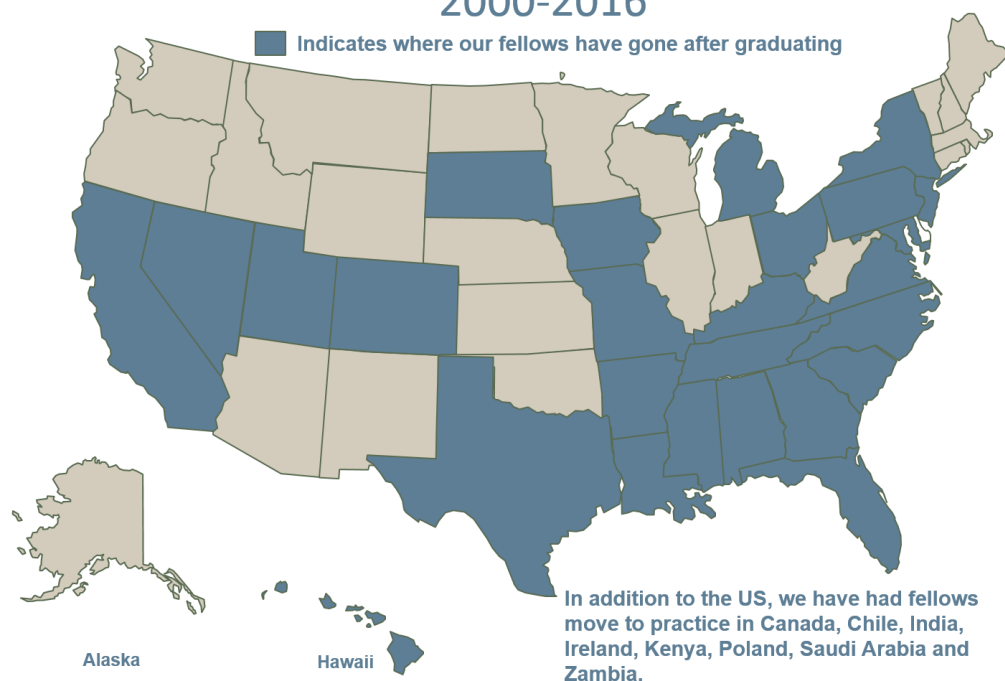
Approximately 80% of our Pediatric fellowship graduates go into academics or seek additional training. While 20% go into private practice or other areas of interest (i.e., CDC, International Missions, etc.)

OH THE PLACES YOU'LL GO

WHERE NEW UAB PEDIATRIC FELLOWS COME FROM 2016-2017



WHERE UAB PEDIATRIC FELLOWS GO 2000-2016



CHILD HEALTH INVESTIGATIVE FORUM

The Child Health Investigative Forum (CHIF) was organized to promote internal discussion of research-related topics across division, department and university lines. Presentations may cover any type of research related to child health. They may include research in the basic sciences, clinical investigation, public health, health systems research, medical humanities, or any other child-health related areas of interest to pediatrics and related subspecialties. The interactions generated in this setting are a fundamental component of the academic environment and experience of the UAB Department of Pediatrics, and are integral to the pursuit of an academic career. The CHIF lectures are on first and third Fridays.

EXAMPLE PRESENTATIONS

Influenza Pathogenesis, Transmission and Immunity

A Personalized Approach to Cystic Fibrosis

Targeting Thioredoxin Reductase to Prevent Oxygen-Induced Lung Injury

Piecing Together the Puzzle of Disparities in Adolescents and Young Adults with Cancer

Halogen Toxicity-Induced Pre-eclampsia

Child Life Specialists Lessen the Emotional Responses of Children During Laceration Repair in the Emergency Department

Allergic Airway Sensitization Impairs Antibody Responses During Mycoplasma Pneumoniae Infection

Factors Influencing Decisions Regarding HPV Vaccination Among Non-vaccinated Rural Alabama Youth and Their Caregivers

CORE EDUCATIONAL CURRICULUM

The Fellows' Core Educational Series was organized in 2015 to supplement individual divisional level educational efforts. The primary focus is on topics that cross all fellowships. Examples of topics to be covered include: career development, education related topics, teaching and presenting skills, cultural competency, communication, advocacy and leadership. The Fellows' Core Educational Series will generally occur on the second Friday of the month.



CORE CURRICULUM

YEAR 1	YEAR 2
Risk Management	Research Grants
Library Resources	Research Ethics
Leadership Skills	Biostatistics and Epi
Negotiating for an Academic Job	Evidence Based Medicine
Contracts	IRB Management
Advocacy	Presenting Research
Professionalism	Research Design
Wellness	Simulation in Education
Economics of Healthcare	Promotion and Tenure
Academic Success	CV Preparation
Presentation Skills	Quality Improvement
Social media	Patient Safety

DIXON FELLOWSHIP AWARD

The Dixon Foundation endows a fellowship program in Pediatrics expressly aimed at supporting postdoctoral training and research in approved Pediatric subspecialties to prepare outstanding fellows for a career in academia. The program was initiated in 1988 by Ed and Peggy Dixon following the loss of their grandson, Bradford Dean Dixon, to Biliary Atresia in the mid-1980's. As part of this prestigious award, recipients benefit from salary support and additional \$5,000 per year discretionary funds to support research and continuing education activities.

2016 DIXON FELLOWS



Dr. Jenny K. McDaniel
Hematology/Oncology
One Year Award



Dr. Claudette Poole
Infectious Diseases
Two Year Award



Dr. Eric Ring
Hematology/Oncology
One Year Award



Dr. Nathanael Swinger
Critical Care
One Year Award

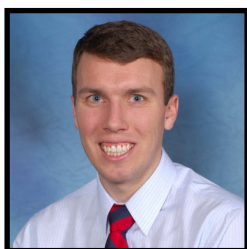


Dr. Colm Travers
Neonatology
One Year Award

CHU FAMILY EDUCATIONAL SCHOLARSHIP

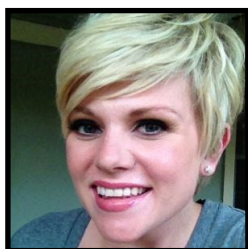
The Chu Family has provided a generous gift for educational initiatives. A large portion of the gift has been set aside specifically for Pediatric Fellows. A competitive process is in place for fellows to apply for these funds on a yearly basis. Some examples of education endeavors that are suitable for application include: Masters of Public Health, Master of Science in Public Health, Quality Academy, Master of Quality and Safety, Masters of Education, Masters of Business Administration, others not covered above such as Simulation, etc... To date, we have been able to award Chu Scholarships to 5 Pediatric Fellows to assist in furthering their educational goals.

2015-2016 CHU FAMILY SCHOLARS



Dr. Nicholas CaJacob
Gastroenterology/Nutrition Fellow

Educational Initiative: UAB Health Care Quality and Safety Certificate Program



Dr. Lauren "Beth" Shipman
Rheumatology Fellow

Educational Initiative: Medical Education Certificate Program through the University of Cincinnati



Dr. Megan Yanik
Nephrology Fellow

Educational Initiative: Masters of Science in Public Health in Clinical and Translational Research at UAB

2016-2017 CHU FAMILY SCHOLARS



Dr. Kathryn Hines
Hospital Medicine Fellow

Educational Initiative: Medical Education Certificate Program through the University of Cincinnati



Dr. Adolfo Molina
Hospital Medicine Fellow

Educational Initiative: UAB Health Care Quality and Safety Certificate Program

ONBOARD BIRMINGHAM

OnBoard Birmingham is a program designed to provide early career professionals the opportunity to meaningfully connect to the Birmingham community. Started in 2014, the program is designed to expose participants to local leaders in diverse segments including nonprofits, business, education, and politics. The program consists of roughly 12 events scheduled from late summer through the fall that are conveniently scheduled in the late evenings (typical start time is 6 p.m.) to facilitate young professionals busy schedules. Last year's event locations included the John Hand Club, Sloss Visitors Center, Avondale Brewery, the Edge of Chaos, and the Birmingham Civil Rights Museum among others. Some of the topics covered included programs on Birmingham's history, economy, and culture, a meet and greet with local nonprofit leaders, two group service projects, and a look at Birmingham's recent urban redevelopment. More information on this year's program will be available at the Birmingham Business Alliance website: www.birminghambusinessalliance.com. Two current pediatric fellows will be awarded full scholarships for the OnBoard Birmingham program through a generous sponsorship from Children's of Alabama CEO, Mr. Mike Warren.



Mike Warren, Children's of Alabama CEO, sponsors two pediatric fellows full scholarships to participate in the OnBoard Birmingham Program. For questions, contact Dr. Nick Cajacob at ncajacob@uabmc.edu.

PEDIATRIC SCIENCE DAY

The first annual Pediatric Science Day was held in March 2016 in the Bradley Conference Center. The day was a huge success! Twenty pediatric presentations were showcased including presentations by 12 pediatric fellows, six pediatric residents, one post doc in psychology and one medical student. Additionally, eight posters were presented, five by pediatric fellows, one by a chief resident, one by a nutrition graduate student and one by a research associate. We were thrilled that Dr. Paul Spearman, Vice Chair of Research from Emory University was able to join us as the featured Grand Rounds speaker. He was an integral active participant during both the platform and poster sessions, and gave a very informative grand rounds presentation. Three fellows were highlighted with best abstracts in their section: Dr. Eric Ring and Dr. Jenny McDaniel, first and second year fellows from Hematology/Oncology, and Dr. Johanna Hall, third year fellow from Emergency Medicine. The day was even more complete as close to 70 faculty members took time to enjoy the presentations during the day.



In the Department of Pediatrics, we seek to discover new knowledge to improve the health of the children of Alabama, the region and, the world. For fiscal year 2015, we were ranked #16 in NIH funding among all Pediatric Departments with \$14.85 million in NIH awards.

QUALITY IMPROVEMENT AND PATIENT SAFETY

Quality improvement and patient safety are key educational components to fellowship training.

The University of Alabama at Birmingham (UAB) has a unique certificate program in Healthcare Quality and Safety; this program can lead to a Master's degree via the School of Health Professions. Fellows may apply and participate in this program.

Realizing that all fellows may not have the time and commitment to obtain this certificate a **UAB Mini-Quality Academy** has been developed. Each one day sessions allows for inter-professional training and collaboration in Quality Improvement and Patient Safety. Most fellows will be required to participate. An example of the curriculum is noted below:

UAB MINI QUALITY ACADEMY

Session 1: Making the Case for Quality Improvement

- History of Quality Improvement
- Modern Medicine: The Best the World Has Ever Seen?
- Fixing the Problems and Managing Clinical Processes

Session 2: Understanding the Problem

- Mission and Forming Effective Teams
- Identifying Problems
- QI Tools – Brainstorming, Multivoting, and Affinity Diagrams (Break-out)
- Assessing and Mapping the Process (Break-out)
- Project Roadmaps: Creating Specific Aim Statements and Project Charters

Session 3: Gathering and Analyzing Data

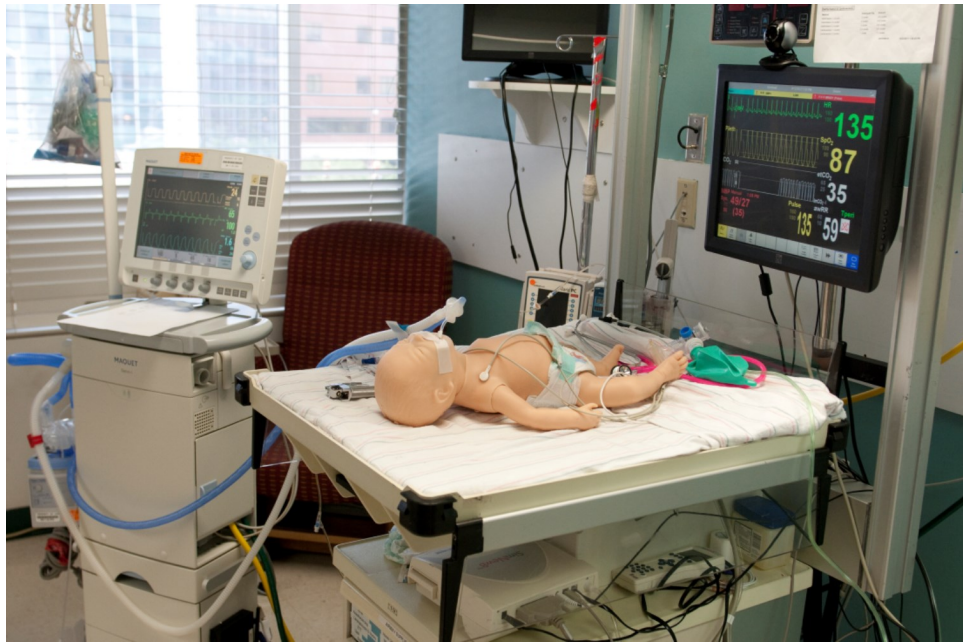
- Introduction to Data
- Importance of Data Definitions for Success (Break-out)
- Data Collection
- Data Not Related to Time – Histograms and Pareto Charts
- Data Related to Time – Run Charts and Control Charts (Break- out)
- Prioritizing Solutions

Session 4: Patient Safety and High Reliability

- Defining Patient Safety
- Swiss Cheese Model and Error-Proofing
- Importance of Teams
- High Reliability Organizations

SIMULATION CENTER

The Pediatric Simulation Center at Children's of Alabama was established in 2007 to provide physicians, nurses, respiratory therapists, pharmacists, students and other health care professionals with opportunities to perform common medical procedures and respond to rare, complex conditions and life threatening emergencies. With the help of our supporters, the Center continues to grow and has nine simulators ranging in age from premature



infant and newborn to teen. Three of the simulators are wireless and can be used off-site. In 2015, we saw more than 6,000 visitors and conducted more than 650 simulations. Our staff strive to maintain our vision of a multidisciplinary center of excellence that utilizes high-fidelity simulation to promote education, research, and the delivery of safe, innovative health care for children. The Center's mission is to integrate simulation throughout Children's of Alabama in a structured learning environment that promotes excellence in clinical care, patient safety, and education for all pediatric healthcare practitioners and care teams.

Over the past six years, the Pediatric Simulation Center has conducted...

- 85 mock codes
- 43 PALS sessions
- 71 NRP sessions
- 42 trauma simulations
- 115 nursing service orientation (NSO) simulations
- 25 national and local podium presentations
- 55 IRB approved research studies
- 82 research posters at national and international conferences
- 32 trips to Children's South
- and consumed 2500 pounds of candy!

MITCH COHEN, MD - CHAIR

POLICIES AND PROCEDURES

The National Resident Matching Program (NRMP) recommends all applicants review the policies and procedures manual of any institution they are considering listing on their certified rank order list. We have included a copy of our Initial Resident Agreement for 2016-2017 that all incoming residents are required to sign. If you are interested in checking out a complete list of our policies and procedures, please check out the UAB Graduate Medical Education website at: http://www.uab.edu/medicine/home/images/AY_2016_GME_Policy_and_Procedure_Manual_-_kn.pdf



INITIAL RESIDENT AGREEMENT

INITIAL RESIDENT AGREEMENT

This agreement is entered into the ____ day of ____ between the Board of Trustees of the University of Alabama on behalf of The University of Alabama Hospital ("Hospital"), and _____ ("Resident").

Hospital wishes to appoint the Resident as a postgraduate year _____ resident in the _____ Program and Resident wishes to accept such appointment.

Therefore, the parties hereto agree as follows:

- Term of Agreement.** Unless earlier terminated in accordance with this agreement, the term of the Resident's appointment is one year commencing on _____ and terminating on _____.
- Graduate Medical Education Policies and Procedures.** Resident has been provided a copy of the UAB Hospital Graduate Medical Education Policies and Procedures. Resident acknowledges receipt of said document as well as having read and understood it. Resident acknowledges and comprehends the guidelines and/or the processes outlined in the GME Policies and Procedures, including, without limitations, those sections regarding resident eligibility and requirements for residency training (Section III.A), resident responsibilities and conditions of appointment (Section V), educational program and faculty responsibilities (Section VII), financial support and benefits (Section IV), ancillary and support services (Section VI), disciplinary procedures (Section X), grievance procedures and due process (Section XI), professional liability insurance (Section IV.F), health and disability insurance (Section IV.E), annual leave (Section IV.G), supervision of residents (Section VIII.C.), duty hours (Section VIII.H), moonlighting (Section VIII.L), counseling services (Section VI.C), physician impairment (Section IX), residency closure/reduction (Section IV.B), restrictive covenants (Section III.C), and University of Alabama at Birmingham policies on harassment (Appendix 9).
- ACGME Accreditation Related Activities.** In programs accredited by the Accreditation Council for GME (ACGME), resident acknowledges and agrees to maintain compliance with activities related to program accreditation in the time prescribed. These activities include, but are not limited to, completing the ACGME Resident Survey, logging duty hours and completing case logs as requested by the Program Director.
- Salaries.** Salaries are determined each year based on the budget of the Hospital with approval by the Dean's Council for Graduate Medical Education. Resident shall be paid the salary approved for the appointed postgraduate year, as specified in Section 1 of this agreement, and in accordance with the GME Policies and Procedures, Section IV.D.
- Physical Examination.** Resident understands that failure to complete a health screening examination performed by the Hospital, as outlined in Section V.D. of the GME Policies and Procedures will result in suspension or termination of his/her appointment as a resident.
- Tobacco-Free Hiring Policy.** Resident understands that he/she will not be hired if found to test positive for nicotine use on the pre-employment drug screen performed by the Hospital, as outlined in Section V.E of the GME Policies and Procedures.
- USMLE/COMLEX Examinations and Alabama Licensure.** Resident understands that failure to pass the USMLE or COMLEX examinations and obtain licensure in the State of Alabama, as outlined in Sections V.K, V.L, and V.M of the GME Policies and Procedures, will result in suspension or termination of his/her appointment as a resident.
- Renewal of Agreement.** Resident understands and acknowledges that this agreement expires on the date set forth in Section 1 and that Hospital makes no commitment to renew this agreement. Reappointment and advancement of the Resident is at the discretion of the Program Director in accordance with Section III.F. of the GME Policies and Procedures. If a decision is made by the Hospital not to renew this agreement at the end of its one year term, notice of such nonrenewal shall be made in writing four months in advance of _____, in accordance with section III.D of the GME Policies and Procedures. However, if the primary reason for the non renewal occurs within the four months prior to the end of the agreement, the notice of non renewal may be sent less than four months in advance of the non renewal. Any resident receiving notice of intent to not renew his/her contract may request a hearing as outlined in Grievance Procedures, Section XI.C. Any resident receiving notice of intent of non-promotion to the next level of training may request informal adjudication as outlined in Grievance Procedures, Section XI.B. Each Resident who is offered a renewal of this agreement must accept such offer in writing within thirty (30) days of the date shown in the first paragraph of the renewal contract. Likewise, if a decision is made by the Resident not to renew this agreement at the end of its one year term, the resident shall submit notice of such nonrenewal in writing to the Graduate Medical Education Department four months in advance of _____.
- Termination of Agreement.** Hospital may terminate the Resident Agreement, as set forth in the GME Policies and Procedures. If the resident leaves the program, thereby terminating this agreement, the resident will have breached this agreement. In the event of such breach, resident understands and agrees to the following: 1) the Hospital will report the resident's breach of the agreement to the National Resident Matching Program, if applicable; and, 2) the Program Director and the Hospital will include the fact of the resident's breach in any reference letters.
- Acceptance.** This agreement shall not be effective and shall not bind either party unless it is submitted to Hospital within sixty (60) days of the date shown in the first paragraph of this agreement and accepted by the Hospital by signature below.

THE UNIVERSITY OF ALABAMA HOSPITAL:

Program:

By: _____
Gustavo Heudebert, MD- Designated Institutional Official

Date: _____, 20____

By: _____
Program Director

Date: _____, 20____

RESIDENT:

By: _____
Date: _____, 20____

SALARY AND BENEFITS

SALARY	BENEFITS	MISCELLANEOUS
<ul style="list-style-type: none"> • PGY-4 \$56,870 • PGY-5 \$59,049 • PGY-6 \$61,413 <p>* Stipends are reviewed annually in accordance with those of the Council of Teaching Hospitals.</p>	<p><u>At no cost:</u></p> <ul style="list-style-type: none"> • Professional liability insurance • Group term life insurance • Long-term disability insurance • Accidental death and dismemberment insurance • Pagers • Photocopying/faxing privileges • Medline database • Counseling services through the UAB Faculty and Staff Assistance Program • Three weeks off/year • Family leave <p><u>Other benefits:</u></p> <ul style="list-style-type: none"> • Health insurance plans for residents, spouses and dependent children provided at favorable rates • Dental insurance at favorable rates • Hospital Parking at favorable rates • Campus Recreation Center • Onsite Childcare • Voluntary Retirement Plans 	<ul style="list-style-type: none"> • Financial support for presentation at a scientific meeting • Conference travel allowance • Financial support for travel to fellows meeting • Financial support for international rotation • On-site Medical Library • Medical license reimbursement • PALS, ATLS Courses • Yearly in-service exam

EMPLOYEE BENEFITS FOR HOUSE OFFICERS

UNIVERSITY PAID INSURANCE

	<u>ANNUAL SALARY</u>	<u>COVERAGE</u>
1. Group Term Life Insurance	\$24,000-29,999	\$37,500
Coverage varies with salary as indicated.	\$30,000-39,999	\$50,000
No cost to employee.	\$40,000 and above, 125% of salary with a maximum insurance coverage of \$300,000.	
2. Accidental Death and Dismemberment Insurance	\$22,500 for accidental death	
No cost to employee.		
3. Long-Term Disability Insurance (Salary Continuation)		
After a 90-day waiting period, 66 2/3% month salary (not to exceed \$10,000 per month) for the first 90 days.		
The benefit is then reduced to 60%. No cost to employee.		

HEALTH CARE PLANS:

Some form of health insurance coverage is mandatory. Proof of insurance is required if the University's VivaUAB, VivaAccess, or Blue Cross are not elected.

VivaUAB, VivaAccess, or Blue Cross monthly deductions:

	<u>YOUR COST (2016)</u>		
	<u>VivaUAB</u>	<u>VivaAccess</u>	<u>Blue Cross/PMD</u>
Single coverage	\$ 65.38	\$ 146.19	\$ 182.77
Employee+up to 2	\$ 221.57	\$ 416.81	\$ 537.31
Family coverage	\$ 334.12	\$ 617.96	\$ 826.80

Coverage under UAB's group health care plans must begin on either the date of employment or the first day of the month following date of employment.

VOLUNTARY BENEFITS:

- MetLife Dental Plans
Basic Option: Single Coverage - \$18.08 month, Family Coverage - \$46.26/month
Comprehensive Option: Single Coverage - \$34.42, Family Coverage - \$87.84
(See UAB Employee Handbook for more information)
- UAB Select: Flexible Spending Accounts - Pretax reimbursement for eligible medical and dependent care Expenses up to \$2,500 (healthcare acct) or \$5,000 (dependent care) annually per account.
- Voluntary Life Insurance
Maximum Coverage: Up to 5 times your salary, not to exceed \$1.4 million.
Guaranteed Issue: 3 times your salary or \$500,000; elected during the first 60 days of employment without evidence of insurability.
- Voluntary Accidental Death and Dismemberment Insurance
Maximum Coverage: \$500,000

OTHER BENEFITS:

- Social Security taxes and benefits established by the U.S. Government.
- Unemployment Compensation Insurance paid entirely by the University.
- On-the-job Injury/Illness Program paid entirely by the University.

This information is a brief summary of benefits for general purposes only.
Please refer to the UAB School of Medicine website for additional information.

ADOLESCENT MEDICINE

ABOUT US

The UAB Adolescent Medicine Subspecialty Fellowship program is an RRC-approved training program for physicians who have completed specialty training in pediatrics, family medicine, or internal medicine. The three year pediatric fellowship includes comprehensive interdisciplinary training based upon ACGME core competencies. Fellows participate actively in teaching of medical students, residents, and health care trainees from nutrition, nursing and other health related fields. The core faculty members of the program are physicians, nurse practitioners, psychologists, dietitians, and other health professionals with special training and expertise in adolescent health issues.

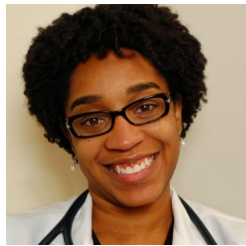
Fellows can participate in master's level training in public health, maternal and child health, health administration and other health-related fields.

OUR FELLOWS



Erin Boyd, MD, MSPH

Research Interest:
Adolescent Sexual Risk
Taking Behaviors



Samantha Hill, MD

Research Interest:
Adolescent Sexual Health

"I chose UAB because of their interdisciplinary approach to adolescent care and the various clinical and research opportunities available here in my area of interest. I knew that I would be able to engage in more advocacy opportunities in this program as well."

Erin Boyd, MD, MSPH

FELLOWSHIP DIRECTOR



Tina Simpson, MD, MPH
Professor

Residency: Pediatrics, University of Alabama at Birmingham

Fellowship: Adolescent Medicine, University of Alabama at Birmingham

FELLOWSHIP COORDINATOR



Adrienne Marbury, MPA

E: amarbury@peds.uab.edu

P: 205.638.6970

RESEARCH INTERESTS:

Faculty:

Nefertiti Durant, MD, MPH

Using Technology to Promote Physical Activity

Krista Casazza, PhD, RDN, LD

Musculoskeletal Function in Adolescents

Tina Simpson, MD, MPH

Adolescent Sexual Risk Taking Behaviors
HPV Vaccination

Marsha Sturdevant, MD

Adolescent HIV

Stephenie Wallace, MD, MSPH

Pediatric and Adolescent Obesity

WHAT MAKES OUR PROGRAM UNIQUE?

Adolescent Medicine fellows participate in the interdisciplinary Maternal and Child Health Bureau funded Leadership Education in Adolescent Health (LEAH) training program which encompasses:

- MCH Leadership Training
- Community Engagement
- Policy and Advocacy Training
- Professional Networking Opportunities



<http://www.uab.edu/medicine/peds/gpam-training-program/leah-grant>

ALLERGY & IMMUNOLOGY

ABOUT US

The UAB Allergy & Immunology Fellowship Training Program is an accredited joint adult and pediatric fellowship program accepting one candidate each year with board eligibility or certification in Internal Medicine or Pediatrics.

The UAB Allergy & Immunology Fellowship Program, like most Allergy & Immunology Fellowship Programs nationwide, participates in the AAMC Electronic Residency Application Service (ERAS) and the National Residency Matching Program (NRMP). Allergy & Immunology Fellows receive intensive clinical training in allergic and immunologic diseases in children with the faculty of the Division of Pediatric Allergy, Asthma & Immunology at Children's of Alabama's Park Place and Children's South Facilities. On the adult side, fellows work with Drs. John Anderson, Amy CaJacob and Tracy Hwangpo at the Birmingham VA Medical Center. They also receive training in the outside offices of three local private allergy practices under the supervision of volunteer clinical



July 2015 Fellows: Jack Ghably, MD (first year); Miranda Curtiss, MD PhD (second year); Erin Mullaney MD (first year), Colleen Adkins MD (outgoing), Vuong Nayima DO (second year); Amy CaJacob MD (outgoing)

The UAB Allergy & Immunology Fellowship Program dates to 1990 and has trained 21 fellows to date with a 100% pass rate on the Allergy & Immunology Boards.

Fellows attend one half-day clinic per week on a rotating basis in the private offices of four volunteer faculty who practice in the local community. During their two years of training, fellows are also encouraged to pursue electives in adult and pediatric ENT and Dermatology, specialties with considerable overlap in our field.

Fellows and faculty meet twice weekly for didactic seminars and for a monthly journal club/case presentation session at the Kirklin Clinic with community allergist & immunologists. All fellows are required to pursue a research project and a quality improvement project under a mentor either among the Fellowship Faculty or other faculty members at UAB and to present their work at a national meeting and in scholarly journals.

FELLOWSHIP DIRECTOR



Prescott Atkinson, MD, PhD
Professor and Division Director

Residency: Pediatrics, University of Alabama at Birmingham, Georgetown University
Fellowship: Allergy & Immunology NIH/NIAD

FELLOWSHIP COORDINATOR



Scott DeFreese

E: sdefreese@peds.uab.edu
P: 205.934.1180

RESEARCH INTERESTS:

Research in my laboratory is focused on the role of atypical organisms in the pathogenesis of chronic diseases such as asthma and arthritis. One ongoing project being pursued by my graduate student is to examine the effect of allergic airway sensitization on the immune response to *Mycoplasma pneumoniae* in a mouse model. I am also actively engaged in the development of rational strategies to determine the molecular basis for unidentified immunodeficiencies in patients in my weekly clinics at Children's Hospital and The Kirklin Clinic. - Dr. Atkinson

Select Publications:

- Atkinson TP et al. 2009. Deficient immune response to *Mycoplasma pneumoniae* in childhood asthma. Allergy Asthma Proc. 30(2):158-65. PMID: 19463205.
- Atkinson TP et al. 2011. Stevens-Johnson syndrome in a patient with macrolide-resistant *Mycoplasma pneumoniae* pneumonia. Pediatrics. 127(6):e1605-9. PMID: 21536614.
- Xiao L, Crabb DM, Dai Y, Chen Y, Waites KB, Atkinson TP. 2014. Suppression of antimicrobial peptide expression by ureaplasma species. Infect Immun. 82(4):1657-65. PMID: 24491573.

CARDIAC CRITICAL CARE

ABOUT US The Pediatric Cardiac Critical Care Fellowship program is a one year clinical fellowship dedicated to advanced training of future cardiac intensivists in the management of critically ill pediatric patients with congenital and acquired heart disease. We accept one fellow per year that is board eligible in pediatric critical care, pediatric cardiology, or neonatology. Our Cardiovascular Intensive Care unit is a twenty bed unit with 600 medical and surgical admissions per year. As the only Pediatric Cardiothoracic Surgery Center in the State of Alabama, we admit a vast variety of pathologies including congenital heart disease, heart failure, arrhythmias, ventricular assist devices, ECMO, and heart transplantation. Our Cardiac Critical Care program is a collaborative effort between the Divisions of Pediatric Cardiology, Pediatric Cardiothoracic Surgery, Pediatric Cardiac Anesthesiology, and Neonatology. This one year fellowship is uniquely designed to provide training based on the candidates's previous clinical skills and knowledge as well as build experience in research and quality improvement in the CICU. Please feel free to call us with any additional questions.

OUR FELLOWS



Jason Turner, MD



Sangeetha Rao, MD

"The Cardiac Critical Care fellowship at Children's of Alabama has been instrumental in improving my understanding of the cardiovascular physiology and gaining confidence in managing patients with complex heart disease. The intricate congenital heart care group is one of the best I have worked with. Their insightful teaching and teamwork exhibited has helped me to understand and cherish my patients."

Ashima Das, MD
2015-2016 Fellow

FELLOWSHIP DIRECTOR



Leslie Rhodes, MD
Assistant Professor

Residency: Pediatrics, University of Alabama at Birmingham
Fellowship: Pediatric Critical Care, University of Alabama at Birmingham
Pediatric Cardiac Critical Care, University of Alabama at Birmingham

FELLOWSHIP COORDINATOR



LaTanya Brown

E: labrown@peds.uab.edu
P: 205.975.3123

PUBLICATIONS AND AWARDS

Since 2013, the cardiac critical care medicine section gave 18 poster presentations and five oral presentations at international scientific conferences and we won three abstract awards. Many of these presentations are by trainees.

Recent Publications:

Timpa JG, O'Meara LC, Goldberg KG, Phillips JP, Crawford JH, Jackson KW, Alten JA. Implementation of multidisciplinary bleeding and transfusion protocol significantly decreases perioperative blood product utilization and improves some bleeding outcomes. *J Extra Corpor Technol.* 2016;48(1):11-8.

Alten JA, Rhodes LA, Tabbutt S, Cooper DS, et al. Perioperative feeding management of neonates with CHD: analysis of the Pediatric Cardiac Critical Care Consortium (PC4) registry. *Cardiol Young.* 2015 Dec;25(8):1593-601.

Robert SM, Borasino S, Dabal RJ, Cleveland DC, et al. Postoperative Hydrocortisone Infusion reduces the prevalence of low cardiac output syndrome after neonatal cardiopulmonary bypass. *Pediatr Crit Care Med.* 2015 Sep;16(7):629-36.

O'Meara LC, Alten JA, Goldberg KG, Timpa JG, et al. Anti-xa directed protocol for anticoagulation management in children supported with extracorporeal membrane oxygenation. *ASAIO J.* 2015 May-June;61(3):339-44.

Sasser WC, Dabal RJ, Askenazi DJ, Borasino S, et al. Prophylactic peritoneal dialysis following cardiopulmonary bypass in children is associated with decreased inflammation and improved clinical outcomes. *Congenit Heart Dis.* 2014 Mar-Apr;9(2):106-15.

RESEARCH INTERESTS

Our research is multidisciplinary and an integral part of our division. All faculty are involved in clinical and translational research at some level with fellow participation. We are very involved with multi-institutional collaborative research and quality improvement projects with PC4. It is our goal for each fellow to complete one research project and present at least one conference during fellowship. Some of our interests:

- Impact of Cardiac Surgery on the Gastrointestinal Microbiome
- Epidemiology of Lung Injury in Children with Congenital Heart Disease
- Cardiac Surgery induce adrenal insufficiency
- Preoperative feeding in neonates with congenital heart surgery
- Microcirculation in critically ill children with cardiac disease
- Interaction of the gastrointestinal microbiome and cardiac surgery
- Prophylactic PD in high risk neonates
- Arteriovenous CO2 gradient and outcomes after infant cardiac surgery

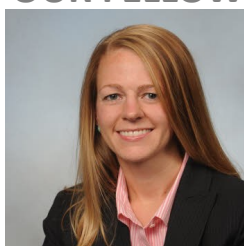
CARDIOLOGY

ABOUT US

The Pediatric Cardiology Fellowship program at the University of Alabama at Birmingham (UAB) will educate qualified physicians with a structured scholarly experience in clinical and experimental cardiology. The training program is to provide fellows with a firm foundation for understanding normal and abnormal cardiovascular conditions, including a strong emphasis on the pathophysiologic basis of congenital and acquired cardiovascular disease.

The program's goal is to prepare fellows for careers as academic pediatric cardiology consultants to provide optimal care for pediatric patients with cardiovascular disease. Our accredited program consists of 3 years of training, at the end of which the fellow will have met or exceeded the requirements for the qualifying board examination in pediatric cardiology.

OUR FELLOWS



J. Leslie Gaddis Collins, MD



Rune Toms, MD

PUBLICATIONS

Transhepatic Cannulation for venovenous Extracorporeal

Membrane Oxygenation. Rhodes LA, Sasser WC, McMahon WS, Law MA, Timpa JG, O'Meara LC, Alten JA. ASAIO J. 2015 Jul-Aug;61(4):e29-30. doi: 10.1097/MAT.000000000000213. PMID: 25710775

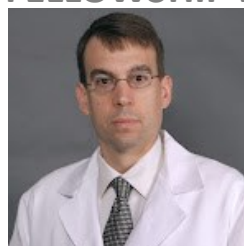
Balloon Angioplasty for the Treatment of Left innominate

Vein Obstruction Related Chylothorax after Congenital Heart Surgery. Law MA, McMahon WS, Hock KM, Zaccagni HJ, Borasino S, Alten JA. Congenit Heart Dis. 2015 Jul-Aug;10(4):E155-63. doi: 10.1111/chd.12246. Epub 2015 Jan 20. PMID: 25600286

PostoperativeHydrocortisone Infusion Reduces the Prevalence of Low Cardiac Output Syndrome After

Neonatal Cardiopulmonary Bypass. Roberts SM, Borasino S, Dabal RJ, Cleveland DC, Hock KM, Alten JA. Pediatr Crit Care Med. 2015 Sept;16(7):629-36. doi: 10.1097/PCC.0000000000000426

FELLOWSHIP DIRECTOR



Mark Law, MD
Associate Professor

Residency: Internal Medicine/
Pediatrics, University of Alabama at
Birmingham

Fellowship: Pediatric Cardiology,
Baylor College of Medicine

FELLOWSHIP COORDINATOR



Ina Schaffer

E: ischaffer@peds.uab.edu

P: 205.996.2365

RESEARCH INTERESTS

Our research is multidisciplinary. The overall goal of the research is to provide the fellow with the knowledge and skills necessary to become proficient and effective in identifying reasonable research hypotheses.

Examples

- Balloon angioplasty to treat persistent leaking or lymph fluid into the lung cavity after surgery
- Ultrasound guided procedures
- Impact of gamma globulin levels in newborn after heart surgery
- Heart transplanted outcomes
- Tuberous sclerosis
- Prophylactic hydrocortisone infusion after cardiopulmonary bypass
- IVIG supplementation following surgery
- Long-term outcomes of Fontan operation
- Outcomes of transcatheter pulmonary valve replacement

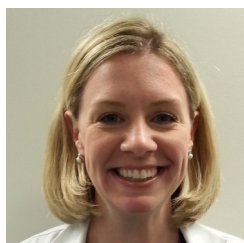
CHILD NEUROLOGY

ABOUT US

The University of Alabama at Birmingham (UAB) Child Neurology Fellowship is combined with the Pediatric Residency Program. Applicants do NOT need to apply to the Pediatric Residency Program for the Child Neurology Fellowship position. Training in child neurology shall encompass a total of five years. This includes two years of pediatric residency training, one year of training in clinical adult neurology, one year of training in clinical child neurology, and one year as "flexible".

Our faculty are experts in a variety of Neurological specialties such as Tourette syndrome and other movement disorders, stroke, and Demyelinating Disorders. We are currently the only pediatric demyelinating center in the southeast and running clinical trials in Pediatric Multiple Sclerosis and Pediatric Neuro Myelitis Optica. We also specialize in neuromuscular syndromes and currently have a Neurologist on staff who conducts EMGs on a weekly basis and Muscular Dystrophy clinics monthly. In addition to our well esteemed faculty members, our nurse practitioners are Certified Neuroscience Registered. Child Neurology training is based on supervised clinical work with increasing resident responsibility. Our training aims that our residents are effectively independent prior to graduation.

OUR FELLOWS



Sarah Novara, MD



Lydia Marcus, MD

"During my time in the UAB Child Neurology residency & fellowship program, I have been blessed with tremendous mentors on faculty. I am extremely grateful to participate in the care of patients & families who teach us about a wide variety of neurological disorders. Every day presents new opportunities on inpatient and outpatient rotations, and I'm confident that my training will enable me to provide evidence-based care to my patients for many years to come."

Sarah Novara, MD

"My experience in the Child Neurology Program at UAB has been challenging, exciting, and fulfilling. I am grateful for the exceptional instruction I have received here."

Lydia Marcus, MD

RESIDENTS

Child Neuro Residents currently completing Pediatrics Residency:

- Neal Sankhla, MD
- Rachel Bass, MD
- Brittney Jones, MD

RESIDENCY DIRECTOR



Tony McGrath, MD
Associate Professor

Residency: Neurology, University of Oklahoma

Fellowship: Neurology, University of Alabama at Birmingham

RESIDENCY COORDINATOR



Charmaine Echols
E: cechols@peds.uab.edu
P: 205.996.7859

RESEARCH INTERESTS:

Child Neurology current research interests (including faculty and residents) listed below:

- Assess Safety and Tolerability of Topiramate as Monotherapy Compared with Levetiracetam as Monotherapy in Pediatric Subjects with New or Recent Onset Epilepsy (P. Kankirawatana, MD/ R. Singh, MD /A. Kumar, MD)
- Pediatric Multiple Sclerosis and Pediatric Neuromyelitis Optica (J. Ness, MD)
- Childhood Absence Epilepsy (P. Kankirawatana, MD/ T. McGrath, MD)
- Pediatric Stroke Simulation Lab (S. Novara, MD)

CRITICAL CARE

ABOUT US

Our fully accredited 3-year program combines research and clinical experience that makes our graduates eligible and prepared for the American Board of Pediatrics Subspecialty Board exam in Pediatric Critical Care Medicine. The goal of the Pediatric Critical Care Fellowship Program is to provide trainees with the education, clinical experience, research training, and technical skills necessary to become excellent intensivists who are ready to achieve success in the academic setting. The 36-month curriculum includes 17.5 months clinical service, 18.5 months protected research time, and 9 weeks vacation. We have a 100% pass rate for first time board takers. The Pediatric Intensive Care Unit at Children's of Alabama is a 22 bed unit with approximately 1,400 admissions per year. Pediatric Critical Care fellows learn to diagnose and care for patients with a wide variety of conditions such as multiple traumas, respiratory failure, surgical diagnoses, shock, and multi-organ dysfunction. In addition, Critical Care fellows spend four months in the Cardiac Intensive Care Unit, which is a 20 bed unit with greater than 300 pump cases and 500 surgeries per year.

OUR FELLOWS



Robert Richter, MD



Nicki Sims, MD



Nathan Swinger, MD



Neha Gupta, MD



Ashley Brown, MD



Sai Surapa-Raju, MD



Steve Nye, MD

FELLOWSHIP DIRECTOR

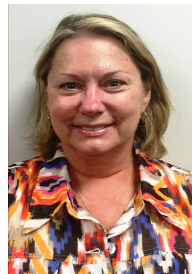


Priya Prabhakaran, MD
Associate Professor

Residency: Pediatrics, University of Alabama at Birmingham

Fellowship: Pediatric Critical Care, Baylor University and University of Alabama at Birmingham

FELLOWSHIP COORDINATOR



Vanessa Snider

E: vsnyder@peds.uab.edu

P: 205.638.3342

RESEARCH INTERESTS:

FACULTY:

- Delineating the role and impact of protease dysregulation in the pathogenesis of Acute Lung Injury and Respiratory Syncytial Virus-induced respiratory failure in children
- Improving health care delivery through Lean/Six Sigma Methodology
- The role of inflammatory mediators in acute and chronic lung disease

FELLOWS:

- Effect of noninvasive ventilation vs supplemental oxygen therapy on reintubation in high-risk infants following congenital heart surgery.
- Impact of preoperative steroids on adrenal insufficiency and clinical outcomes after neonatal cardiac surgery with cardiopulmonary bypass.
- Hyperchloremic Metabolic Acidosis—Does it Matter?

EMERGENCY MEDICINE

ABOUT US

The Pediatric Emergency Medicine fellowship program at the UAB has been in existence for over 30 years. We are housed in a Level 1 trauma center dedicated to the care of children. We accept 3 fellows per year, who join fellows from 17 other divisions.

We offer all electives and a significant amount of “protected” research time is allowed throughout the training period. Our fellows take classes at the School of Public Health to acquire basic research tools – an excellent opportunity available in few programs. We believe our program is unique in that we offer a State-of-the-Art Simulation Center, specific training in Point of Care Ultrasound, and training at a Regional Poison Control Center. At graduation our fellows are prepared clinically in all aspects of Pediatric Emergency Medicine. We have a greater than 90% pass rate for first time board takers and our fellows find faculty positions coast to coast.

Please feel free to call us with additional questions and we look forward to hearing from you!

OUR FELLOWS



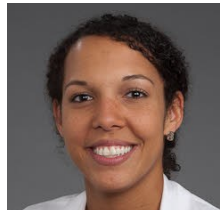
Megan Brennard, MD



Todd Fleenor, MD



Jon Buice, MD



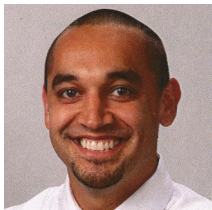
Kathleen Richard, MD



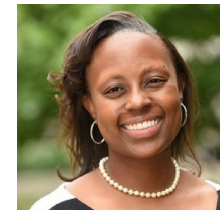
Langston Lee, MD



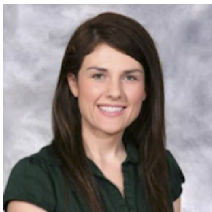
Shaundra Blakemore, MD



Josh Haupt, MD



Jacinta Cooper, MD, PhD



Jennifer Smedley, DO

FELLOWSHIP DIRECTOR



Ann E. Klasner, MD, MPH

Professor

Residency: Pediatrics, University of Arkansas

Fellowship: Pediatric Emergency Medicine, St. Louis University

FELLOWSHIP COORDINATOR



Mackenzie Stanford

E: Aklasner@peds.uab.edu

P: 205.638.6557

RESEARCH INTERESTS:

The fellowship program aims to develop a strong research foundation through formal training and to help our fellows gain experience in grant writing, project development, and paper presentation. Some of our faculty and fellows current and recent research projects include:

- Asthma Pathway Effect on Length of Stay
- Febrile Sickle Cell Patients, ED Time to Antibiotics
- Herpes Simplex Virus Infection in Young Infants
- The Pediatric Septic Shock Collaborative
- Does Utilizing Child Life in the ED Improve Emotional Responses of Children's Undergoing Laceration Repair?
- Using an Established Simulation Curriculum for EMS
- Measuring the potential impact of bedside US on patient outcomes for the management of skin and soft tissue infections
- Liquid nicotine ingestions national review

ENDOCRINOLOGY

ABOUT US

The Pediatric Endocrinology fellowship program at the University of Alabama at Birmingham (UAB) has a long-standing commitment to fellowship education, through a vast clinical experience and variety of research opportunities. As part of the Children's of Alabama team, we have a flourishing inpatient service and outpatient clinic. Our division currently consists of nine faculty members, and we accept one fellow per year to join our team.

Our fellowship curriculum is a balance of inpatient and outpatient clinic rotations, with ample time devoted to developing research and/or career interest. Fellows are encouraged to participate in other institutional clinical experiences here at UAB, including genetics, reproductive endocrinology, and adult endocrinology. Research experiences can be through our Division, or through the vast other resources here at UAB. These may include basic science, clinical or transitional research, as well as projects in medical education. Our fellows follow their clinic interests and develop a foundation for their future careers in medicine.

We are dedicated to providing an exemplary fellowship and welcome hearing from you regarding any questions you may have.

OUR FELLOWS



Shelly Mercer, MD



Heather Choat, MD

"The UAB Pediatric Endocrinology fellowship program has far exceeded my expectations. In my first year alone I have encountered some extremely interesting patients with very rare pathology. I have had ample exposure to the 'bread and butter' cases of pediatric endocrinology. The mixture of experience in both the clinical and inpatient settings is ideal. The biggest asset to this program are the outstanding attendings. They are extremely knowledgeable and create a stimulating academic environment. I know at the end of three years I will be able to seamlessly transition to a fulfilling career as a pediatric endocrinologist. "

Shelly Mercer, MD

FELLOWSHIP DIRECTOR



Michael Stalvey, MD
Assistant Professor

Residency:

Pediatrics, University of Florida

Fellowship:

Pediatric Endocrinology, University of Florida

FELLOWSHIP COORDINATOR



Toni Davison

E: tdavison@peds.uab.edu

P: 205.996.9196

RESEARCH INTERESTS:

Faculty:

- Pathogenesis of type 1 and type 2 diabetes
- Cardiovascular risk, insulin resistance and vitamin D
- Endoplasmic reticulum enzymes and metabolism
- Growth and bone metabolism in cystic fibrosis
- Effects of cigarette smoke on glucose regulation and bone metabolism
- Pathogenesis of cystic fibrosis related diabetes
- Newborn screening and follow-up of congenital hypothyroidism and congenital adrenal hyperplasia
- New technologies in diabetes management
- Feasibility of non-mydratic retinal screening during endocrine clinic for children with diabetes
- Factors influencing dyslipidemia in children and adolescents

Fellows:

- Pathway-driven DKA management and effects on hospital outcomes
- Predisposing factors for rhabdomyolysis in the setting of hyperglycemia

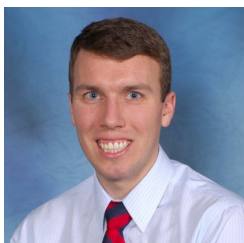
GASTROENTEROLOGY, HEPATOLOGY & NUTRITION

ABOUT US

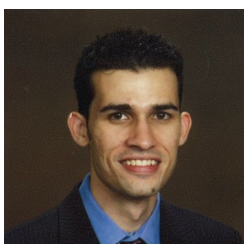
Our fellowship program is designed to provide fellows in gastroenterology with the background and experience to diagnose and manage patients with acute and chronic diseases of the digestive system (esophagus, stomach, intestines, liver, and pancreas), including those that are life-threatening, and to conduct research in this specialized field. Fellows will be guided in developing clinical judgment and skills and in acquiring medical knowledge, humanistic qualities, and professional attitudes and behaviors that are appropriate for the pediatric gastroenterologist.

The goals of this program include developing decision making skills in cost-effective methods, and efficient evaluation and management of a wide variety of diseases. We will groom Fellows to develop skills in appropriate laboratory testing procedures, including indications, preparation, techniques and interpretations. Our program also provides mentoring and opportunities for clinical or laboratory based research.

OUR FELLOWS



Nick CalJacob, MD



Osman Ahmad, MD



Saurabh Talathi, MD

MULTIDISCIPLINARY PATIENT CENTERED PROGRAMS:

- AeroDigestive Program
- Colorectal Program
- Gastrointestinal Eosinophilic Diseases Program
- Hepatobiliary Program
- Inflammatory Bowel Disorder Program
- Intensive Feeding Program
- Intestinal Rehabilitation Program
- Liver Transplant Program
- Weight Management Program

RESEARCH INTERESTS:

Faculty:

- Simulation as a teaching tool in Pediatric Gastroenterology
- Cohort Study of Disease Education and Medication Adherence in patients attending a specialized Pediatric Inflammatory Bowel Disease Clinic

Fellows:

- Eosinophilic Esophagitis: Analyzing the Microbiome

FELLOWSHIP DIRECTOR

Jeanine Maclin, MD, MPH

Associate Professor

Co-Director, Inflammatory Bowel Disease Clinic



Residency:

Pediatrics, University of Alabama at Birmingham

Fellowship:

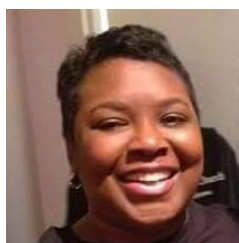
Pediatric Gastroenterology, University of Alabama at Birmingham

FELLOWSHIP COORDINATOR

Nicole DeShazo

E: ndeshazo@peds.uab.edu

P: 205.638.5191



State of the art GI laboratory and endoscopy facilities perform number of diagnostic and therapeutic procedures which include:

- Upper and lower endoscopy with biopsies
- Polypectomies
- Variceal Sclerotherapy and Banding
- Foreign body removal from upper GI tract
- PEG Placement
- Dilatations
- Percutaneous liver biopsies
- pH/impedance study
- Hydrogen Breath Testing
- Anorectal Motility Testing

HEMATOLOGY & ONCOLOGY

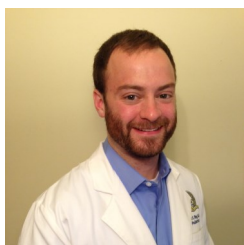
ABOUT US

The **mission** of the division is to improve the quality of young lives and cure children with childhood cancer and blood disorders through excellent care, education, and research.

The division **goals** are to serve children and young adults with childhood cancer and blood disorders through the southeastern United States; to give state-of-the-art personalized clinical care to patients; to educate and train the public, families, patients, and healthcare professionals in the care of childhood cancer and blood disorders; and to pursue a clinical translation of basic research focused on childhood cancer and blood disorders. These goals are accomplished with the dedicated efforts of the UAB faculty teamed with an extensive support staff of UAB and Children's of Alabama.

Two fellows are accepted into the program each year. 1st year fellows enjoy the opportunity to care for a diverse patient population. 2nd and 3rd year fellows use protected time for scholarly activity, taking advantage of world class basic science and clinical research faculty throughout the UAB Campus.

OUR FELLOWS



Eric Ring, MD



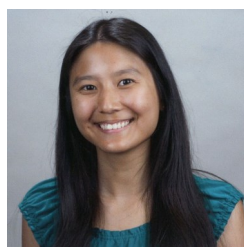
Corey Falcon, MD



Jenny McDaniel, MD



Aman Wadhwa, MD



Jamie Aye, MD



Jason Payne, MD

RESEARCH INTERESTS:

Fellows:

Dr. McDaniel: investigating the role of complement activation and inflammation in the pathogenesis of thrombotic syndromes.

Dr. Ring: Exploring oncolytic viral vectors in solid tumors.

FELLOWSHIP DIRECTOR

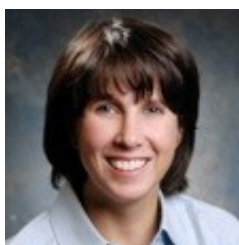
Kimberly Whelan, MD, MSPH

Associate Professor
Medical Director, Taking on Life after Cancer clinic

Residency:

Pediatrics, Vanderbilt University Medical Center

Fellowship: Pediatric Hematology & Oncology, University of Alabama at Birmingham



FELLOWSHIP CO-DIRECTOR

Ana Xavier, MD

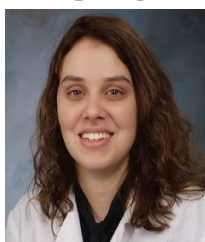
Assistant Professor

Residency:

Pediatrics, Medical University of South Carolina

Fellowship:

Pediatric Hematology & Oncology, Children's Hospital of Michigan/Wayne state University



FELLOWSHIP COORDINATOR

Kimberly Threadgill

E: kthreadgill@peds.uab.edu
P: 205.638-6194



Faculty:

Dr. Smita Bhatia: Cancer outcomes and survivorship research aiming to reduce the burden of cancer and its sequelae across all segments of the population through collaborative efforts.

Dr. Greg Friedman: Improving outcomes for children with malignant brain tumors by developing and improving novel, targeted therapeutics like oncolytic engineered herpes simplex virotherapy (oHSV) in the lab and then translating these therapies to clinical trials.

Dr. Fred Goldman studies new gene transfer methods to treat bone marrow failure syndromes and disorders of hematopoiesis and leukemia.

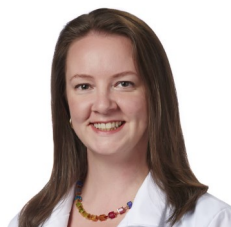
HOSPICE & PALLIATIVE MEDICINE

ABOUT US

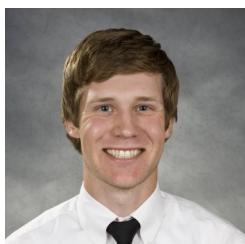
The UAB Palliative Medicine Fellowship Program has been training leaders in Palliative Medicine since 2000, making it one of the oldest and most established training programs in the country. To date, we have trained over 34 fellows from across the country. Our 1-year fellowship offers a rigorous interdisciplinary education in palliative care at UAB Hospitals, the Birmingham VA Medical Center, and Children's of Alabama. Fellows also receive training in the outpatient setting through the UAB Supportive Care & Survivorship Clinic, the UAB HIV Palliative Care Clinic, the Muscular Dystrophy Association Clinic at Children's of Alabama, and through partnerships with several community hospices.

In addition to clinical skills, the curriculum includes training in research methodology and quality improvement, teaching skills, and palliative care and hospice business and administration. The balance and breadth of experience ensures that fellows are ready to practice in the inpatient, ambulatory, or hospice settings upon completion of the fellowship training.

OUR FELLOWS



Elizabeth Carroll, MD



Brian Donahue, MD



Sandhya Mudumbi, MD



Melissa Puher, MD

Our Pediatric Palliative & Supportive Care team at Children's of Alabama includes 4 physicians, 1 CRNP, & 1 Nurse Clinician.

We accept 4 fellows per year into the program, including 1 in our Pediatric track.

Please feel free to call us with additional questions. We look forward to hearing from you!

FELLOWSHIP DIRECTOR



Michael D. Barnett, MD, MS, FAAP
Assistant Professor of Medicine & Pediatrics.

Residency: Combined Internal Medicine-Pediatrics, University of Alabama at Birmingham

Fellowship: Hospice & Palliative Medicine, University of Pittsburgh

FELLOWSHIP COORDINATOR



Rachel Metcalf

E: rmetcalf@uabmc.edu
P: 205.934.7972

RESEARCH INTERESTS:

Fellows complete a project under the mentorship of faculty within the UAB Center for Palliative & Supportive Care and guided by a scholarship curriculum that covers topics such as designing a research question, IRB, abstracts & posters, and medical presentation and publication. Recent projects include:

- Goals of Care Training for Neurology Residents
- Buccal Midazolam for Seizures in Pediatric Hospice
- Evidence-Based Dyspnea Action Plan for Hospice
- Delirium Assessment & Prevention in the ED
- Ethics of Physician-Assisted Dying
- Single Fraction Radiation Therapy for Bony Metastases
- Subcutaneous Dosing of Antiepileptic Medications

HOSPITAL MEDICINE

ABOUT US

The goal of the Pediatric Hospital Medicine (PHM) fellowship program is to prepare specialists in hospital medicine who will have excellent clinical skills, the ability to perform meaningful research and the capacity to become leaders in the field of hospital medicine. The curriculum provides sufficient clinical experience for fellows to become confident experts in the care of hospitalized children. Our faculty have developed a core lecture series to give fellows a working knowledge of health information systems, study design, and basic biostatistics, among other topics.

All PHM fellows will complete a research project that will contribute to the field of pediatric hospital medicine in its broadest sense, as well as the opportunity to build a disease-specific clinical pathway to be used at Children's of Alabama. Clinical service takes place in Children's of Alabama, the centerpiece of a health system for children and adolescents that occupies new, state-of-the-art 340 bed inpatient facilities. Children's of Alabama serves as the regional referral center for Alabama and surrounding states. PHM fellowship is typically two years; extension to a third year is possible for candidates who wish to pursue a graduate degree during fellowship. PHM fellows work with 9 academic, UAB Department of Pediatrics faculty members who are pediatric hospitalists.

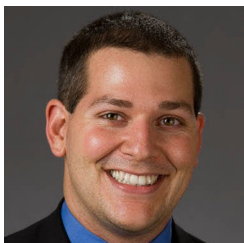
OUR FELLOWS



Meghan Hofto, MD



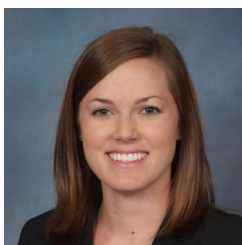
Katy Hines, MD



Adolfo Molina, MD



Cassi Smola, MD



Erinn Schmit, MD

FELLOWSHIP DIRECTORS



Sridaran Narayanan, MD

*Assistant Professor
Fellowship Director*

Residency: Pediatrics, Rainbow Babies' and Children's Hospital, Cleveland OH
E: snarayanan@peds.uab.edu



Chang L. Wu, MD, MSCR

*Assistant Professor
Associate Fellowship Director*

Residency and Fellowship: General Academic Pediatrics, Medical University of South Carolina
E: cwu@peds.uab.edu

FELLOWSHIP COORDINATOR

Sharon Walker

E: snarayanan@peds.uab.edu

P: 205.638.9922

RECENT DIVISION PUBLICATIONS

Alon Peltz, Chang L. Wu, Marjorie Lee White, Karen M. Wilson, Scott A. Lorch, Cary Thurm, Matt Hall, Jay G. Berry. Characteristics of Rural Children Admitted to Pediatric Hospitals. *Pediatrics*. Apr 2016, e20153156; DOI: 10.1542/peds.2015-3156

SECTION ON TOBACCO CONTROL. Clinical Practice Policy to Protect Children From Tobacco, Nicotine, and Tobacco Smoke. *Pediatrics*. Oct 2015, peds.2015-3108; DOI: 10.1542/peds.2015-310

Sridaran Narayanan, Paul Scalici. Serum Magnesium Levels in Pediatric Inpatients: A Study in Laboratory Overuse. *Hospital Pediatrics*. Jan 2015, 5 (1) 9-17; DOI: 10.1542/hpeds.2014-0015

RESEARCH INTERESTS

- Impact of Academic Cohort Turnover on Pediatric Inpatient Outcomes
- Bronchiolitis and Asthma Clinical Pathways
- Hospitalization for Immune Thrombocytopenic Purpura
- Inpatient Management of Unintentional Ingestions

INFECTIOUS DISEASES

ABOUT US

The Pediatric Infectious Diseases Fellowship is a three-year training program approved by the Accreditation Council for Graduate Medical Education (ACGME) and affiliated with Pediatric Residency Program at the University of Alabama School of Medicine. The fellowship program provides trainees with a broad clinical experience and strong foundation in scholarly pursuits, including basic or clinical research, antimicrobial stewardship, infection control, and infectious diseases in the immunocompromised host. The program is flexible and is tailored to suit each individual's interests, previous experience, and future career goals. Our overall objective is to prepare fellows for a career in academic pediatric infectious diseases. Stated plainly, our fellows' success is our success. Our track record over many years of placing fellows in top clinical, research, and public health programs throughout the country is a testament to the success of this approach. All of our former fellows over the past decade have easily passed their pediatric infectious diseases boards.

OUR FELLOWS



Claudette Poole, MD

Quotes from the fellows:

"UAB Peds ID faculty are wonderful to work with and also really great people.

Mentorship is amazing. Opportunities for research abound. Collaborative relationships exist with the adult ID division and School of Public Health as well as other divisions within UAB Pediatrics."

Catherine Hough-Telford, MD
2014-2016 fellow

"I chose to do infectious diseases fellowship here at UAB because I saw that the faculty were excellent teachers during my residency."

Aaron Grubbs, MD
2012-2016 fellow

FELLOWSHIP DIRECTOR



Scott James, MD

Assistant Professor

Residency: Pediatrics, University of South Florida

Fellowship: Pediatric Infectious Diseases, University of Alabama at Birmingham

FELLOWSHIP COORDINATOR



Tracy Downey

E: tdowney@peds.uab.edu

P: 205.996.7782

RESEARCH INTERESTS:

The Pediatric Infectious Diseases Division at the University of Alabama at Birmingham (UAB) is internationally known for its studies of congenital and perinatal viral infections. For 50 years, the Division has defined the natural history, pathogenesis, diagnosis, treatment and prevention of congenital cytomegalovirus (CMV) infections and neonatal herpes simplex virus (HSV) disease.

- Pediatric HIV infection—pathogenesis, drug resistance, breast milk transmission, nutritional micronutrient and antioxidant assessment and the epidemiology of adolescent infections
- Cytomegalovirus—pathogenesis and transmission mechanisms of congenital CMV, predictors of adverse outcomes, mechanisms of hearing loss, and therapy and vaccine development
- Viral Infections and Therapeutics—animal models for viral diseases, clinical trial methodology, host resistance to viral-induced diseases, viral assembly, and molecular epidemiology
- General Infectious Diseases—perinatal infections, *Streptococcus pneumoniae*, respiratory syncytial virus, varicella-zoster virus, antimicrobial stewardship, hospital epidemiology and infection control

RECENT DIVISION AWARDS AND ACHIEVEMENTS

The Division houses the Central Office for the Collaborative Anti-viral Study Group (CASG), a multi-institutional research group which focuses on clinical trials of anti-viral drugs in both pediatric and adult populations.

Suresh Boppana, MD, was awarded the inaugural Congenital CMV Award at the 5th International Congenital CMV Conference in Brisbane, Australia, in April 2015.

David Kimberlin, MD, has been reappointed as Editor of the American Academy of Pediatrics' 2018 Red Book. He served as Editor of the recently published 2015 Red Book, and as Associate Editor for the 2012 and 2009 Red Books.

NEONATOLOGY

ABOUT US

Our comprehensive fellowship program provides an excellent educational, clinical, and research experience to help train the next generation of academic neonatologists. We place emphasis on excellence in basic science and clinical research with up to two thirds of the fellowship time dedicated to research.

The Division of Neonatology is a leader in the field, providing clinical coverage and leadership for two level IV neonatal ICUs and four level III and one level II neonatal ICUs in the greater Birmingham area. Our fellows rotate through the 120-bed Regional NICU at UAB, the 48-bed NICU at Children's of Alabama (the regional ECMO center), and the Cardiac ICU.

Areas of current research interest include lung development, bronchopulmonary dysplasia, pulmonary hypertension, neonatal infections, oxygen free-radicals and antioxidants, assisted ventilation, mediators of infection and inflammation, necrotizing enterocolitis, developmental immunology, perinatal epidemiology and clinical trials. Five full-time research nurses support fellows and faculty members on clinical research projects.

OUR FELLOWS



Pankaj Jain, MD



Colm Travers, MD



Aaron Yee, MD



Samuel Gentle, MD



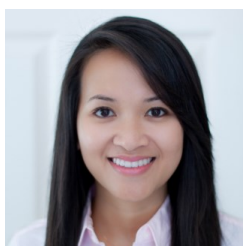
Christine Stoops, DO



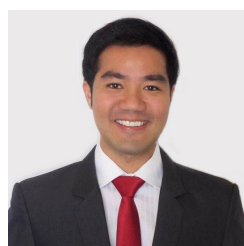
Rachael Tindell, MD



Kalsang Dolma, MD



Thanh Summerlin, MD



Hansa Wongsperat, MD

Fellow Awards:

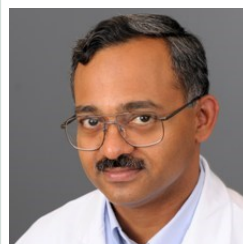
2016 Marshall Klaus Research Award—Aaron Yee, MD
2016 Dixon Fellowship Award—Colm Travers, MD

Former Fellow Publications:

1: Kandasamy J, Roane C, Szalai A, Ambalavanan N. Serum eotaxin-1 is increased in extremely-low-birth-weight infants with bronchopulmonary dysplasia or death. *Pediatr Res*. 2015 Nov;78(5):498-504. doi: 10.1038/pr.2015.152. Epub 2015 Aug 13. PubMed PMID: 26270578; PubMed Central PMCID: PMC4628573.

2: Fort P, Salas AA, Nicola T, Craig CM, Carlo WA, Ambalavanan N. A Comparison of 3 Vitamin D Dosing Regimens in Extremely Preterm Infants: A Randomized Controlled Trial. *J Pediatr*. 2016 Apr 11. pii: S0022-3476(16)00343-7. doi: 10.1016/j.jpeds.2016.03.028. [Epub ahead of print] PubMed PMID: 27079965.

FELLOWSHIP DIRECTOR

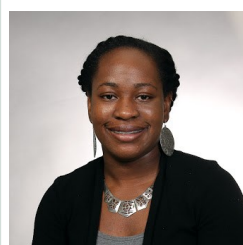


Namasivayam Ambalavanan, MD
Professor, Departments of Pediatrics, Pathology, and Cell, Developmental, and Integrative Biology

Residency: Pediatrics, University of Alabama at Birmingham

Fellowship: Neonatology Fellowship, University of Alabama at Birmingham

FELLOWSHIP COORDINATOR



Stacey Adewakun

E: sadewakun@peds.uab.edu

P: 205.934.4680

RESEARCH INTERESTS:

Faculty:

- Waldemar A. Carlo, MD: Global neonatal research (projects in Zambia and other developing countries) and Neonatal Clinical Trials as a center PI for the Neonatal Research Network.
- Namasivayam Ambalavanan, MD: Lung development and injury. PI of a research center in the LungMAP project.
- Trent Tipple, MD: Antioxidants and lung injury.
- Vivek Lal, MD: MicroRNA and lung injury; Lung microbiome in BPD
- Brian Sims MD, PhD: White matter injury in preterm infants
- George Ferzli, MD: Lung Assist Device; Ventilator induced lung injury
- Tamas Jilling, MD: Necrotizing enterocolitis
- Jegen Kandasamy, MD: Mitochondrial bioenergetics in preterm infants
- Ariel Salas, MD: Randomized clinical trials in neonatology

NEPHROLOGY

ABOUT US The Pediatric Nephrology Fellowship program at UAB has been in existence for over 20 years. We are housed in a Level 1 trauma center dedicated to the care of children. We accept 1 fellow per year who joins fellows from 17 other divisions. The first year of fellowship concentrates on clinical training with intensive research training occurring in the second and third years. Elective rotations consist of pathology, urology, and interventional nephrology. Available research collaborations across UAB encompass basic science, adult nephrology, and pediatric nephrology. Additional program training resources include the possibility of obtaining a Master's in Public Health, a State-of-the-Art Simulation Center located within our institution, the UAB Institute of Personalized Medicine, the UAB Comprehensive Transplant Institute, Health Disparities Research Center, and the Pediatric and Infant Center for Acute Nephrology (PICAN). Upon program completion, our fellows are prepared clinically in all aspects of Pediatric Nephrology.

OUR FELLOW

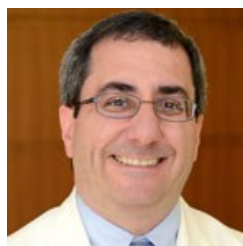


Megan Yanik, MD

“As a pediatric nephrology fellow at UAB and Children’s of Alabama I have a wealth of opportunities and resources available to me, both for clinical learning and research development. The people that I am privileged to work with and learn from here, faculty and staff within the pediatric nephrology division, throughout Children’s Hospital and at UAB, are one of the greatest assets.”

Megan Yanik, MD

FELLOWSHIP DIRECTOR



Daniel Feig, MD, PhD, MS
Professor

Residency: Pediatrics, University of Washington

Fellowship: Pediatric Nephrology, Harvard University

FELLOWSHIP COORDINATOR



Jessica Williams Cobo

E: jcobo@peds.uab.edu

P: 205.638.6784

RESEARCH INTERESTS:

Research interests of the division are broad with participation in multi-center studies on drug discovery/pharmacokinetics, assessment, progression, and treatment of chronic kidney disease in children.

- Nephrotoxic Injury Negation by Just-in-time Action (NINJA)
- The Genetic Contribution to Drug Induced Renal Injury: The Drug Induced Renal Injury Consortium (DIRECT)
- Physiology of Early Essential Hypertension
- Genetics of Renal Cystic Disease
- Role of Vasculature in Chronic Kidney Transplant Dysfunction
- Prevention of Sickle Cell Nephropathy
- Pharmacogenomics of Immunosuppressives and Anti-Hypertensives (Personalized Medicine Initiative)

PULMONOLOGY

ABOUT US

Our pediatric pulmonary training program provides the clinic knowledge necessary to diagnose and manage pediatric patients with acute and chronic respiratory disorders, including those that are life threatening. The curriculum also supports our mission to train highly competent physician educators and scientists. Training in our program is complemented by our UAB Pediatric Pulmonary Center which is one of 5 educational programs funded through a competitive federal grant through MCHB and HRSA that focuses on building leadership skills and promotes awareness of childhood respiratory disease. Clinical training is designed to develop the subspecialty resident's competence in the clinical diagnosis, pathophysiology, and medical treatment of respiratory disorders in pediatric patients within an inter-professional healthcare team. The overall goal of the UAB pediatric pulmonary fellowship program is to train highly qualified physician scientists who will contribute substantially to this field through exemplary patient care, original research, and teaching.

OUR FELLOWS



L to R: Matthew Kreth, MD, Jessica Brown, DO, and Brett Turner, MD

RESEARCH NEWS



Steven Rowe, M.D., MSPH, Professor in Medicine, Pediatrics and Physiology is featured in the cover story of UAB Medicine Magazine for his research to understand the links between the nonsense gene mutations and cystic fibrosis.



Jennifer Guimbellot, MD was accepted into the 2016 CTS Training Program as part of the Clinical and Translational Science Award (CTSA).



Where? [Children's of Alabama](#)

- Birmingham, Alabama

What? To improve the health and well-being of our nation's children and youth, especially those with special health care needs.

How? Through graduate-level and post-doctoral training, patient and family care and education, research, consultation, and the provision of continuing education and technical assistance.

By providing interdisciplinary leadership training to health care professionals, we equip them to improve the health of children with respiratory conditions through the provision of family-centered care and enable them to serve as change-agents, positively impacting health care systems across America and beyond.

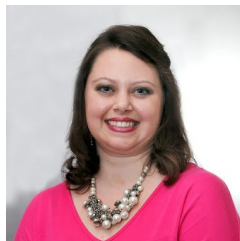
FELLOWSHIP DIRECTOR



Wynton Hoover, MD
Associate Professor

Medical School: LSUHSC New Orleans, LA
Residency: Pediatrics, University of Florida Pensacola, FL
Fellowship: Pediatric Pulmonary, Indiana University Indianapolis, IN

FELLOWSHIP COORDINATOR



Leslie Jones

E: ljones@peds.uab.edu
P: 205.638.6766

CURRENT GRANTS

Jennifer Guimbellot (Ped-Pulmonary) Development of Personalized Approaches to CFTR Modulator Efficacy. Kaul Pediatric Research Institute 02/01/2016-01/31/2017

Wynton Hoover (Ped-Pulmonary) Saline Hypertonic in Preschoolers. SHIP - Seattle 06/19/2015-06/18/2016.

William Harris (Ped-Pulmonary) Mechanisms of Pulmonary Fibrosis in CF Lung Disease. Gilead 05/20/2015-05/19/2017.

Robert Troxler (Ped-Pulmonary) UAB Pediatric Pulmonary Center. PPC 07/01/2015-06/30/2016.

**Please visit the link below for a complete list of
Pediatric Pulmonary Faculty**

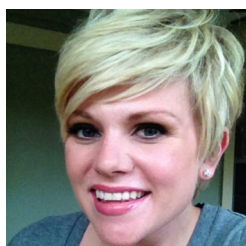
<https://www.uab.edu/medicine/peds/pulmonary>

RHEUMATOLOGY

ABOUT US

The Pediatric Rheumatology fellowship program at UAB was ACGME approved in 2009, two years after the Division of Pediatric Rheumatology was created in 2007. The faculty has grown to 6 board certified pediatric rheumatologists with 3 nurse practitioners, making it the largest program in the southeastern United States. A generous donation/endowment allows us to accept 1 fellow every 3 years, but we are flexible to add more. We practice and impart a reasoned early and aggressive approach to therapy for children with rheumatic diseases, employing a broad range of biologic therapies. A significant amount of “protected” research time (2 of the 3 years) is granted throughout the training period. Those fellows not working in a basic science laboratory are strongly encouraged to get an advanced degree at UAB in public health, clinical epidemiology, or a related field of interest. At graduation, our fellows are well prepared clinically in all aspects of Pediatric Rheumatology. We have a 100% pass rate (1 for 1) for first time board takers, and our first fellow is now one of our faculty. Explore more about our program at: <http://www.uab.edu/medicine/peds/rheum>

OUR FELLOWS



Lauren “Beth” Shipman, MD
3rd year fellow



Courtney Crayne, MD
1st year fellow

“I was fortunate to be the first fellow in this program with the ability to make these 3 years of training fit my career advancement.

I am reminded of how strong our division and training program are during every conversation with other pediatric rheumatologists and our patients.

The strength of our division, the opportunities at UAB, and the flexibility of this fellowship program have allowed me to become an excellent clinician and a successful researcher.”

Melissa Mannion, MD

1st Pediatric Rheumatology fellow

FELLOWSHIP DIRECTOR



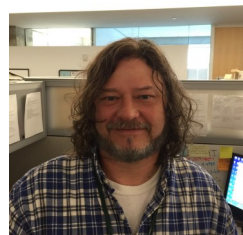
Randy Q. Cron, MD, PhD
Professor

Arthritis Foundation Endowed Chair
Director of Rheumatology

Residency: Pediatrics, Stanford University

Fellowship: Pediatric Rheumatology, University of Washington

FELLOWSHIP COORDINATOR



Scott DeFreese

E: sdefreese@peds.uab.edu
P: 205.934.1180

FACULTY RESEARCH INTERESTS:

- Diagnosis, Genetics, Pathophysiology, and Treatment of Macrophage Activation Syndrome (MAS)
- Diagnosis and Treatment of Inflammatory Temporomandibular Joint (TMJ) Arthritis in Childhood Rheumatic Diseases
- Gut Microbiota and the Adaptive Immune Response in Spondyloarthritis
- Optimizing Treatment of Juvenile Idiopathic Arthritis (JIA), including Comparative Effectiveness of Treatment Modalities
- Outcomes of JIA in Adulthood
- HIV-1 Transcriptional Regulation and Latency Establishment in CD4 T Lymphocytes and Macrophages
- Use of Ultrasonography to Clinically Monitor Linear Scleroderma and Morphea



SLEEP MEDICINE

ABOUT US

The UAB Sleep Medicine fellowship program is a one year fellowship that focuses on sleep physiology, diagnosis and treatment of sleep disorders in adults and children. Fellows rotate at the Sleep Disorder Center at Children's and at the UAB Highlands Sleep Disorder Center. Each training site has a unique patient population and faculty with diverse clinical and research experiences.

The Sleep Disorder Center at Children's of Alabama is one of the busiest pediatric sleep disorder centers in the country. The center is an 9 bed facility and performs over 1500 sleep studies per year. Infants and children with a wide variety of sleep disorders are evaluated on both an outpatient and inpatient basis. Areas of interest include behavioral management of pediatric sleep disorders, positive airway pressure therapy in children with developmental disabilities, movement disorders, pediatric narcolepsy, pediatric insomnia, sleep related breathing disorders, neuromuscular disorders and sleep disturbances in children with chronic disease.

The UAB Highlands Sleep Disorder Center is a 10 bed accredited sleep disorder center located within the UAB medical complex. The center provides outpatient evaluations, inpatient consults and sleep testing for adults with a wide variety of sleep disorders. The center has a long history of clinical excellence, productive research and training sleep medicine fellows.

OUR FELLOWS



Pedro Anis Nourani, MD

Residency: Pediatrics, Driscoll
Children's Hospital Corpus Christi,
TX

CURRENT SLEEP MEDICINE FACULTY

Kristin Avis, PhD, CBSM

Associate Professor, Division of Pediatric Pulmonary & Sleep
Medicine, Board Certified in Behavioral Sleep Medicine

Amy Amara, MD, PhD

Assistant Professor, Division of Adult Neurology
Board Certified in Neurology & Sleep Medicine

David Calhoun, MD

Associate Professor, Division of Cardiovascular Disease
Board Certified in Pulmonary & Sleep Medicine

Jennifer DeWolfe, DO

Assistant Professor, Division of Adult Neurology
Board Certified in Sleep Medicine

Susan Harding, MD

Professor, Division of Pulmonary, Allergy & Critical Care
Board Certified in Sleep Medicine

Jeffrey W. Hawkins, MD

Clinical Assistant Professor of Medicine, Division of Pulmonary,
Allergy & Critical Care
Board Certified in Pulmonary & Sleep Medicine

Narayan Krishnamurthy, MD

Associate Professor, Division of Pulmonary, Allergy & Critical Care
Board Certified in Internal Medicine, Pulmonary, Critical Care &
Sleep Medicine

David Lozano, MD

Associate Professor, Division of Pediatric Pulmonary & Sleep
Medicine
Board Certified in Pulmonary & Sleep Medicine

Mary Halsey Maddox, MD

Assistant Professor, Division of Pediatric Pulmonary & Sleep
Medicine, Board Certified in Sleep Medicine

Brad Troxler, MD

Assistant Professor, Division of Pediatric Pulmonary &
Sleep Medicine Board Certified in Pulmonary & Sleep Medicine

FELLOWSHIP DIRECTOR



David Lozano, MD

Associate Professor

Residency: Pediatrics, Sacred Heart
Children's Hospital

Fellowship: Pediatric Pulmonary,
University of Alabama at Birmingham

ASSOCIATE FELLOWSHIP DIRECTOR



Kristin Avis, PhD, CBSM

Associate Professor

Postdoctoral Training: John Hopkins
University School of Medicine/Kennedy
Krieger Institute, Predoctoral Internship
and Postdoctoral Fellowship in Pediatric
Psychology

FELLOWSHIP COORDINATOR



Leslie Jones

E: ljones@peds.uab.edu

P: 205.638.6766

CURRENT GRANTS

Amy Amara, MD, PhD, Neurology, received a K23 Grant on The Effect
of Low Frequency STN DBS on Sleep and Vigilance in PD Patients.

Kristin Avis, PhD, Sleep Medicine, received a ResMed Foundation
grant for \$84K for two years.

David Calhoun, MD, Cardiovascular Disease, received an NIH/NHLBI
Grant for Mechanisms of Refractory Hypertension for five years.

ACKNOWLEDGEMENT

PHOTOGRAPHY

All photography included is courtesy of Children's of Alabama, UAB School of Medicine, and The Greater Birmingham Convention and Visitors Bureau.

CONTENT

Many thanks to all Fellowship Directors and Coordinators for their contributions to this booklet. Special thanks goes out to the Fellowship Marketing Committee and Sara Davies for her hard work and creativity.

OTHER

**US Template Map courtesy of
www.presentationmagazine.com**

NOTES







2016-2017

UAB Department of Pediatrics
Fellowship Programs
Birmingham, AL 35233-1711

Phone: 205.638.5464
Email: rhandler@peds.uab.edu