

Camp 5

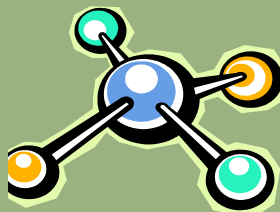
MOLECULES AND YOU

Entering 8th graders

Dates: June 8 - 12
June 22 - 26
July 13 - 17

Embark on a week-long adventure to explore the molecules that are involved in everyday life.

- ◆ Perform hands-on experiments.
- ◆ Use state-of-the art research equipment.
- ◆ Learn how molecules play a role in everyday life.
- ◆ Use mathematics to collect and interpret data.
- ◆ Design your own experiments and present your results to others.
- ◆ Learn to make butter, insulators and a gold penny.
- ◆ Explore career opportunities in chemistry and biomedical sciences.
- ◆ Learn proteins and enzymes by denaturation of Jell-O.
- ◆ Use liquid nitrogen to make ice cream — real cool!



UAB THE UNIVERSITY OF
ALABAMA AT BIRMINGHAM

Camp 6

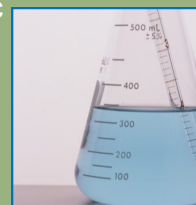
WE'VE GOT SOLUTIONS!

Entering 8th graders

Dates: June 15 - 19
July 6 - 10
July 20 - 24

Spend a week exploring the wonders and magic of chemistry.

- ◆ Have pHun with acids and bases.
- ◆ Determine which dyes are in your favorite candy and how much fat is in the chips you eat.
- ◆ Enjoy hands-on fun with chemical reactions, using the scientific method.
- ◆ Participate in lab demonstrations that you will learn to explain.
- ◆ Solubility, solutes, solutions, saturated solutions, super-saturated solutions . . . learn about it!
- ◆ Design your own tie-dyed shirt with the help of chromatography.



**Application
Deadline
March 20, 2015**

Visit us on the web at:
www.uab.edu/cord/mssc

CORD *emPowering rising stars*

- ◆ Camp hours are 8:30 a.m.— 4:00 p.m. daily. Camp Counselors will be on duty beginning at 7:30 a.m. in the lobby of CHSB 19 (933-19th Street South) for early drop-off.
- ◆ All children are required to bring a lunch daily except for Friday Pizza Day.
- ◆ Acceptance into CORD Camps will be based on available space and regional distribution of students.
- ◆ Each Camp is designed for students entering a specific grade level. There are No Exceptions!
- ◆ Children may attend each Camp in their grade level.
- ◆ Tuition for first week-long Camp is \$175.00. Second grade-level Camp tuition is \$75. A non-refundable deposit of \$50 is required by ALL with application and will be applied toward total cost of tuition.
- ◆ **There are ABSOLUTELY NO DEPOSIT OR TUITION REFUNDS BEFORE OR After CAMPS!**
- ◆ NO Credit Cards Accepted.
- ◆ Applicants will receive a Notification of Acceptance packet that will include: Letter of Acceptance and a Health and Photo Release Form that must be filled-out and returned prior to attending Camp.
- ◆ All forms and tuition are required prior to participation.
- ◆ Behavioral issues are unacceptable and may result in dismissal from Camp.

 National Institutes of Health
SEPA SCIENCE EDUCATION
PARTNERSHIP AWARD
SUPPORTED BY THE NATIONAL INSTITUTES OF HEALTH

CORD

Summer Science Camps 2015



SIX EXCITING CAMPS FOR MIDDLE SCHOOL STUDENTS

UAB Center for Community Outreach Development
5th Floor CHSB 19 933 19th Street South
Birmingham, AL 35294-2041
PH: (205) 934-5171 Fax: (205) 934-5158

Camp 1

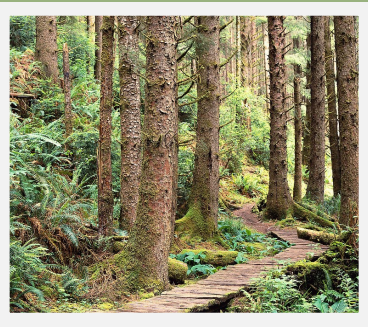
OVER THE HILLS AND THROUGH THE VALES

Entering 6th graders

Dates: June 8 - 12
June 22 - 26
July 13 - 17

An outside Camp that will explore a forest to learn how changes in its plants and animals may affect your health.

- ◆ Collect and analyze data about the forest, its plants, reptiles, amphibians, and mammals.
- ◆ Use computers to mathematically analyze the data you collect and graphically present it to your fellow campers.
- ◆ Learn about pollution tolerance, dominance and species diversity.
- ◆ Discover the processes of adaptation and natural selection that aid survival.



Camp 2

ENVIRONMENTAL ENGINEERING AND YOUR HEALTH

Entering 6th graders

Dates: June 15 - 19
July 6 - 10
July 20 - 24

Be an environmental engineer for a week in this outdoor Camp.

- ◆ Use high-tech instruments to monitor air and water quality, temperature and humidity changes.
- ◆ Learn to analyze your data and develop a presentation to communicate your results.
- ◆ Gain insight into the relationship between the environment and human health.
- ◆ Understand environmental conditions that relate to your health.



Camp 3

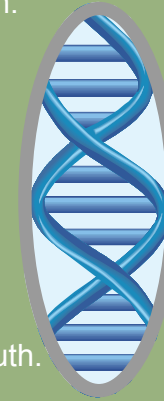
DIVING INTO THE GENE POOL

Entering 7th graders

Dates: June 8 - 12
June 22 - 26
July 13 - 17

Dive into the gene pool and investigate the role that DNA plays in every living creature.

- ◆ Discover what makes up a cell.
- ◆ Isolate DNA from different organisms, including your own.
- ◆ Use modern molecular Biology techniques and sharpen your computer skills.
- ◆ Conduct a forensic analysis of your own DNA "fingerprint."
- ◆ By week's end, you will be well on your way to being a CSI-type sleuth.



Camp 4

PHYSFACTOR

Entering 7th graders

Dates: June 15 - 19
July 6 - 10
July 20 - 24

Put your body and brain to the test. See if you can meet the challenge in which you become the scientist and the subject.

- ◆ Discover the effects of exercise (in and out of the water) on your cardiovascular and pulmonary systems.
- ◆ Design your own experiments, collect data, plot them on the computer and analyze the results.
- ◆ Record daily activities and calculate your calorie consumption throughout the week.
- ◆ Use high tech equipment to aid your scientific explorations.
- ◆ Keep a personal activity nutrition log.



E O R D

e m P o w e r i n g r i s i n g s t a r s