

Comparative Pathology Lab, Animal Resources Program

Director: Jeremy Foote PhD, DVM, DACVP (jbf130@uab.edu)

Lab Manager: Emily Helman MS (helmane@uab.edu)

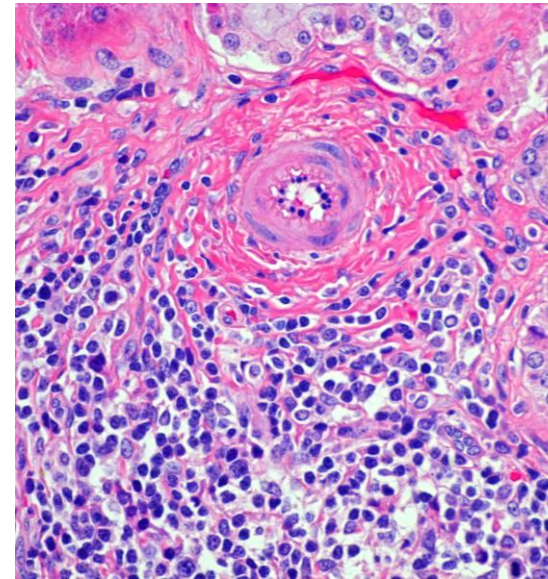
Histology Technician: Sherri Coffman (jeepers@uab.edu)

Website: <https://www.uab.edu/research/home/cpl>

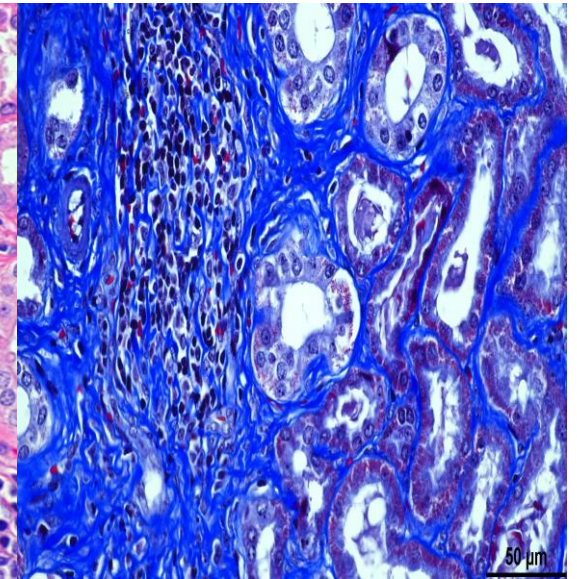
About CPL

- Mission:
 - Supports Animal Resources Program (ARP) animal care and health surveillance programs
 - Assist UAB investigators in achieving their specialized animal research objectives.
- Services:
 - Routine paraffin/OCT processing, embedding, and sectioning (paraffin and OCT embedded sections)
 - Special stains (GMS, PAS/PASH, Gram, Acid Fast, LFB, Trichrome, Picosirus Red, Von Kossa, etc.)
 - Provide training in necropsy, tissue prosection, and collaborative pathology support on ongoing research projects (contact jbf130@uab.edu)
 - Do not offer IHC and IF services, but assistance with protocol development available upon request (jbf130@uab.edu) or services available at pathology core lab (Dezhi Wang-dezhiwang@uabmc.edu)

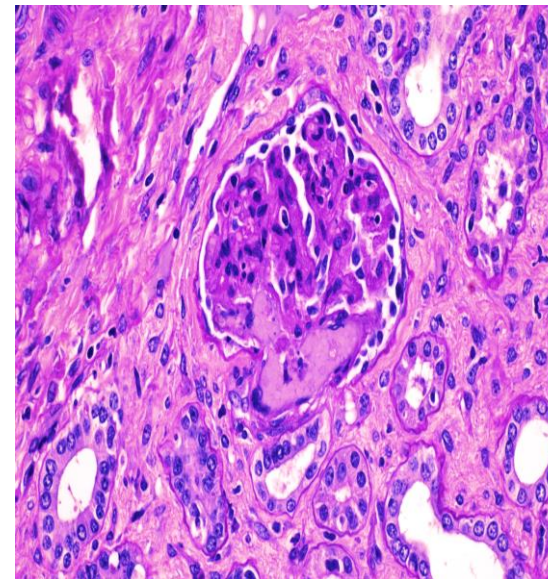
H+E



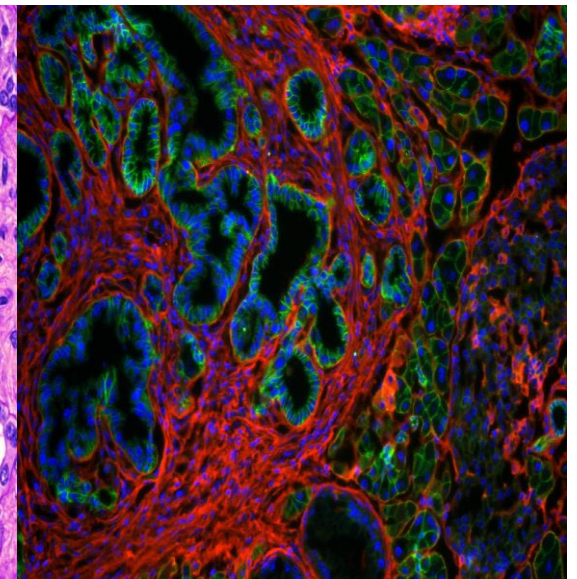
Mason's Trichrome



PASH



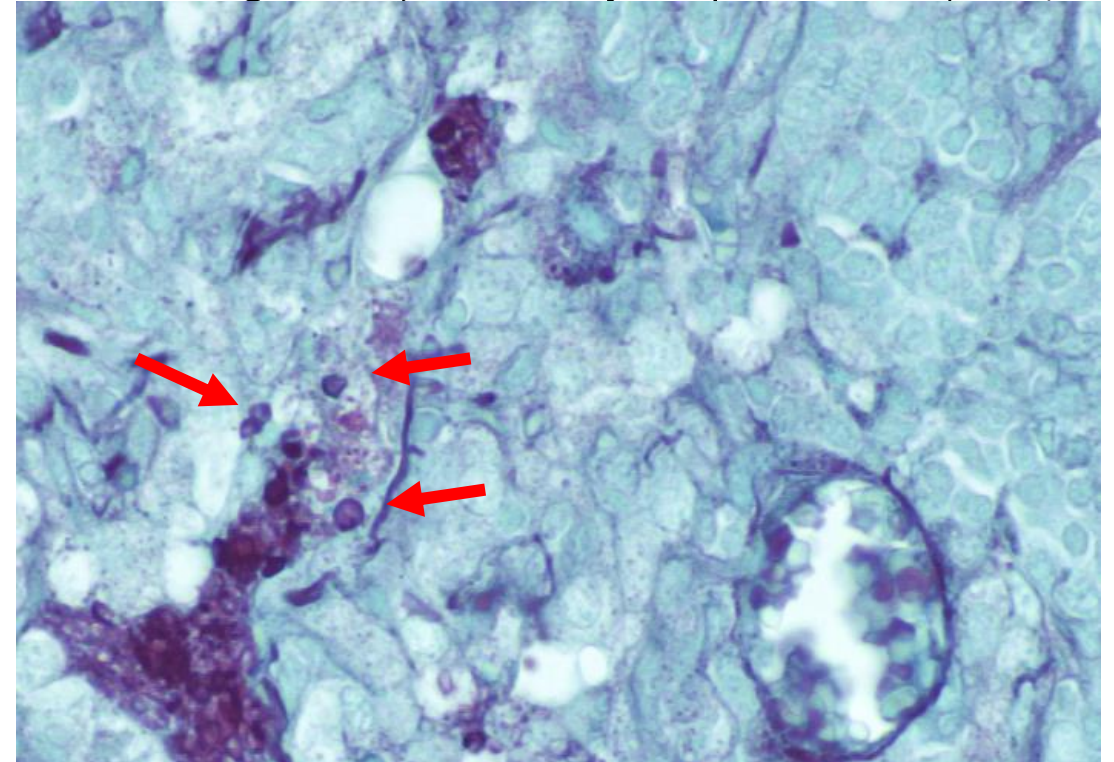
OCT Embedding for IF



Website Links

- Fees: <https://www.uab.edu/research/home/cpl-histology-fees>
- Tissue submission form: <https://www.uab.edu/research/home/cpl-policies-or-forms>
- Collecting and fixing tissues: <https://www.uab.edu/research/home/cpl-collecting-and-fixing-tissues>
- Trimming tissues: <https://www.uab.edu/research/home/cpl-trimming-tissues>
- Main website: <https://www.uab.edu/research/home/cpl>

Lung-GMS (Pneumocystis pneumonia)



Gnotobiotic Mouse Core Facility, Animal Resources Program

Director: Jeremy Foote PhD, DVM, DACVP (jbf130@uab.edu)

Lab Manager: Emily Helman MS (helmane@uab.edu)

Animal Technicians: Stacey Sinclair (ssinclair@uab.edu) and Billie Parsons (bjpason@uab.edu)

Website: <https://www.uab.edu/research/home/cpl>

About GMC

- Mission:
 - Supports germ free (GF) and gnotobiotic mouse research projects conducted by UAB investigators
- Services:
 - Generate germ free and defined flora colonized mouse models
 - Fecal pellet, blood, tail collection conducted by GMC staff at the request of UAB investigators
 - Training of UAB investigators/staff to utilize and conduct studies within Tecniplast Isocage and MiniQ isolators for research studies
 - Provision of stock GF and ASF mouse strains to UAB investigators: (i) C57BL/6 CD45.1, (ii) C57BL/6 Rag 1-/-, (iii) C57BL/6 10BiT.Foxp3gfp, and (iv) Swiss Webster
- Equipment
 - Dedicated high-vacuum autoclave for sterilization of feed, water, bedding
 - New heating, ventilating, and air-conditioning (HVAC) system
 - Isolators (54 total): 10 Trexler-type plastic film isolators, 28 30" Park Bioservices semi-rigid isolators, and 16 Park Bioservices MiniQ™ semi-rigid isolators
 - Two 70-cage Tecniplast Isocage™ positive pressure isolation cage systems, which are used for short-term experiments such as housing mice colonized with human microbiota

GMC Fees



CHARGES 10/1/2016

Item	UAB	Non-UAB
Mouse, weanling or adult	\$ 75.00	\$ 245.00
Mouse, suckling	\$ 15.00	\$ 55.00
Large isolator (Park Bio, Trexler), monthly ¹	\$ 400.00	\$ 945.00
Small isolator (Mini-Q™), monthly ¹	\$ 275.00	\$ 630.00
Isocage™, monthly ²	\$ 75.00	\$ 185.00
Isocage™, monthly, cage maintenance by PI ²	\$ 50.00	—
Germfree derivation	\$ 3,500.00	\$ 8,135.00

¹Prorated except first month

²Prorated for partial months