

Center for Palliative and Supportive Care (CPSC)



Mission

The UAB Center for Palliative and Supportive Care serves patients and families experiencing serious illness by providing compassionate clinical care, demonstrating leadership in teaching health professionals and trainees, conducting collaborative research, and influencing health care delivery and public policy.



Vision

To become an international center of excellence in the field of Palliative Medicine through personalized care, innovative approaches and the sharing of expert knowledge.

BY ACCEPTING OUR MISSION, WE ARE COMMITTED TO UPHOLDING OUR CORE VALUES OF:



Serving with integrity and compassion



Innovating through education and research



Leading through advocacy and influence



Caring through collaboration and interdependence



Sustaining through community and collegiality

CPSC Research Leadership



Dr. Rodney Tucker
Director
Co-Director – UWIRC



Dr. Marie Bakitas
Associate Director
Co-Director – UWIRC



Dr. Ronit Elk
Associate Director
SIIPSC



Aras Acemgil, MBA
Regional Director



Martha Hilley, MPA
Program Manager for Research

CPSC University-Wide Interdisciplinary Research Center (UWIRC)

CPSC gained pilot UWIRC status Oct. 1, 2019

Center Scholars members authored **118** palliative care related research publications

Center Scholars members have secured over **\$9 million** in new grants and contracts

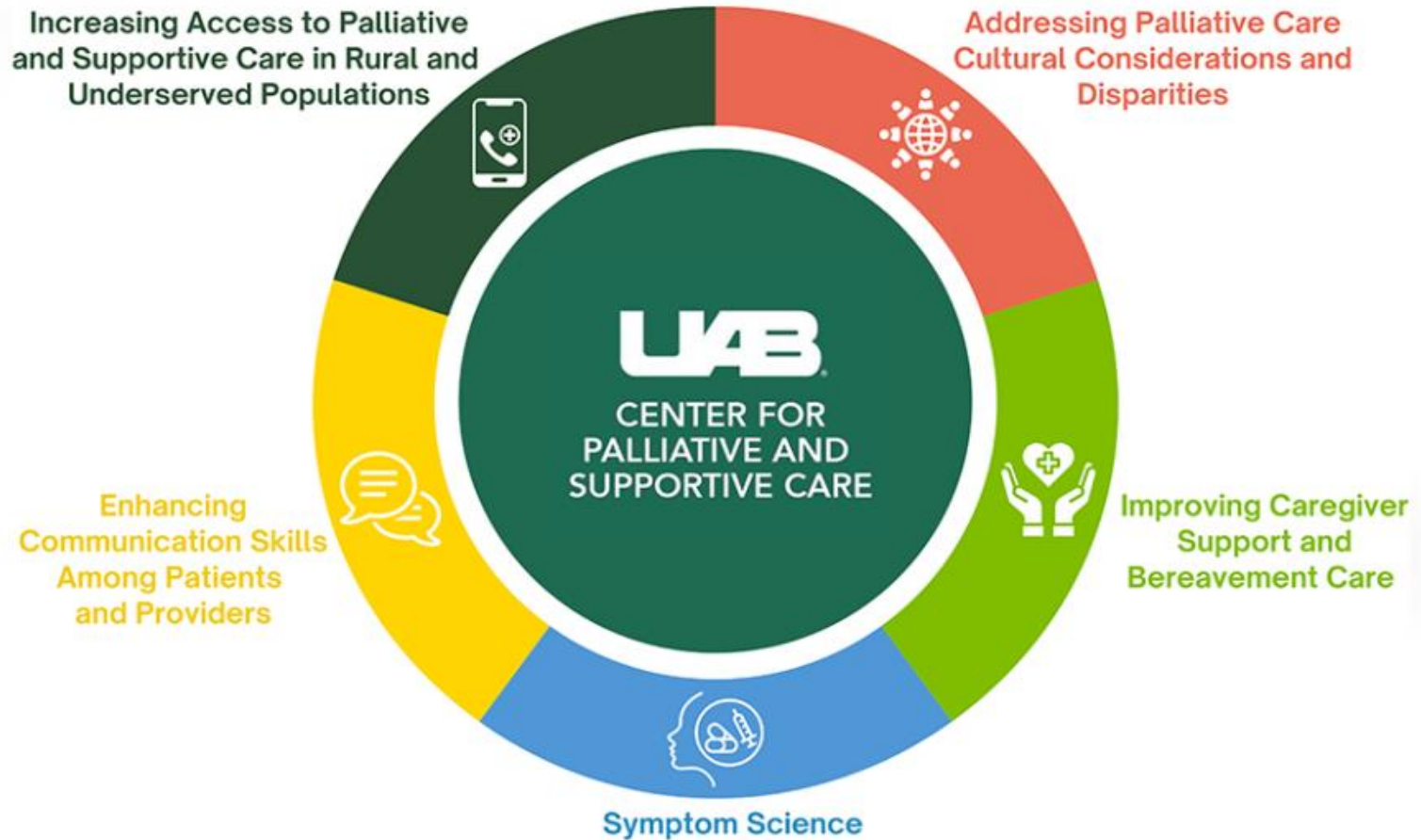
UWIRC External Advisory Board is comprised of **five** members with diverse backgrounds from across the United States

Plans for the Upcoming Year

Submit a joint application with the Department of Health Services Administration to become an Institutional Research Core that will provide both Community-Based Participatory Research (CBPR) and Mixed Methods services

Evaluate the different types of training grants and determine which would best serve the needs of the program

Research Themes



Palliative Research Enhancement Projects (PREP)



The mission of PREP is to fund the UAB community in innovative research; contributing to the evidence base of palliative and supportive care and enhancing the prospect for external funding opportunities.



PREP Awards provide funding to UAB investigators' innovative pilot projects that address aspects of Palliative, Supportive, or Survivorship Care.



PREP has awarded \$364,653 to 19 separate projects in 5 Schools, 8 Departments, and 6 Divisions including: Nursing, Health Professions, Arts & Science, Education, Preventive Medicine, Pulmonology, Nutrition Sciences, Psychology, Emergency Medicine, Human Studies, and Palliative Medicine.



External Funding awarded to date using pilot data from PREP project:
\$24,716,447



Palliative Research Enhancement Project

Center Scholars

- The CPSC aims to **cultivate and promote innovation and collaboration in the advancement of palliative and supportive care research** across the University of Alabama at Birmingham and beyond.
- Appointments are made on the basis of **quality and relevance to the Center** of each prospective member's research portfolio and are considered secondary appointments.
- Center Scholars are invited to participate in the Center's activities, especially in developing **innovative and creative** approaches to palliative and supportive care **research**.

Center Scholars will hold one of the following ranks:

Senior Scientist:
equivalent to
Professor

Scientist:
equivalent to
Associate
Professor

Associate
Scientist:
equivalent to
Assistant
Professor,
Instructor, or
Adjunct
faculty member

Associate:
non-faculty
status

If you are interested in becoming a Center Scholar Member, or would like more information about Center Research Scholars, please contact **Lyle Walton, M.D.** at lswalton@uabmc.edu.

Investigator Development Seminar Series

WHEN: Every 4th Monday of the Month from 12:00-1:00 PM

The Center for Palliative and Supportive Care, in partnership with Geriatrics and Gerontology researchers, and CCTS is hosting monthly research meetings that focus on the development of the research investigator.

PURPOSE:

1. Provide knowledge, experience, guidance and mentorship to beginning investigators
2. Provide an opportunity for those who are writing studies/grants to present their idea and get input from other researchers
3. Discuss aspects of research that most early researchers need to learn about
4. Have discussions/presentations about studies/grants in development

WHO IS INVITED? Anyone interested in research (i.e., faculty, fellows, post-docs, graduate students and research staff interested in enhancing their research skills).





UAB Center for Palliative and Supportive Care
933 19th St S, Birmingham, Alabama 35233



205-975-2610



marthahilley@uabmc.edu



www.uab.edu/medicine/palliativecare

