

## APPENDIX A: UAB HOSPITAL – TOTAL IMPACT

The centerpiece of UAB’s clinical enterprise, UAB Hospital is located in Birmingham’s Medical District. In the midst of UAB’s major research centers and clinics, the 1,157-licensed-bed hospital is among the 20 largest and best-equipped in the nation. With more than 1 million patient visits every year, ground-breaking research activity being conducted throughout the organization, and educational training for the physician and health care professional workforce of the future, UAB Hospital is a national leader in patient care. UAB Hospital is a major center for clinical research and the home of some of the top medical programs in America. Faculty physicians, nursing staff and support personnel are committed to providing world-class care to every patient.

UAB physicians are acknowledged leaders in their specialty fields. They collaborate across disciplines to reach and complete the best personalized treatment plan for each patient, drawing on the vast academic and research resources of UAB to treat even the most difficult cases. Among them is the UAB Comprehensive Cancer Center, the only one in a five-state region. The hospital also participates in the UAB Comprehensive Diabetes Research Center, and all inpatients are checked for glucose abnormalities through the hospital’s innovative Glycemic Control Program. Our highly recognized Neurosciences, Heart/Vascular, Critical Care, and other services also offer the benefit of evidence-based medicine.

With its wide range of clinical, research and academic offerings, the UAB Hospital generates significant impacts to the region and state on an annual basis. The following impact values for the UAB Hospital are a subset of the impact values presented in the UAB Health System section of this report. The UAB Hospital is one of seven components of the UAB Health System presented previously.

### GENERATING ECONOMIC ACTIVITY

Direct spending by UAB Hospital generates economic activity throughout the state of Alabama. In FY16, the direct spending of UAB Hospital in combination with the indirect and induced impacts of dollars’ being re-spent throughout the economy generated **\$1.6 billion** in overall



economic impact (\$797.8 million in direct impact and \$850.1 million in indirect and induced impact).

### **PROVIDING AND SUPPORTING JOBS**

In FY16, UAB Hospital directly employed 10,492 individuals (full-time or part-time positions). This direct employment generates additional spending throughout the state that in turn supports additional indirect and induced jobs created when UAB Hospital and its employees spend in the region and state. In total, UAB Hospital supports **17,275 jobs** throughout the state of Alabama.

### **GENERATING STATE AND LOCAL GOVERNMENT INCOME**

State and local government revenues attributable to the presence of UAB Hospital totaled more than **\$66.0 million** in FY16.

## APPENDIX B: THE UNIVERSITY OF ALABAMA HEALTH SERVICES FOUNDATION – TOTAL IMPACT

Founded in 1973, the University of Alabama Health Services Foundation, P.C., (UAHSF) comprises multiple clinics and a network of suburban clinics that offer medical services in over 35 specialties, as well as administrative, technical and support departments. UAHSF plays a vital and visible role in delivering expert care within UAB’s internationally known academic medical center. UAHSF is known for high-quality patient care and unique compassion, dedication and excellence of its employees.

The following impact values for UAHSF are a subset of the impact values presented in the UAB Health System section of this report. UAHSF is one of seven components of the UAB Health System presented previously.

### GENERATING ECONOMIC ACTIVITY

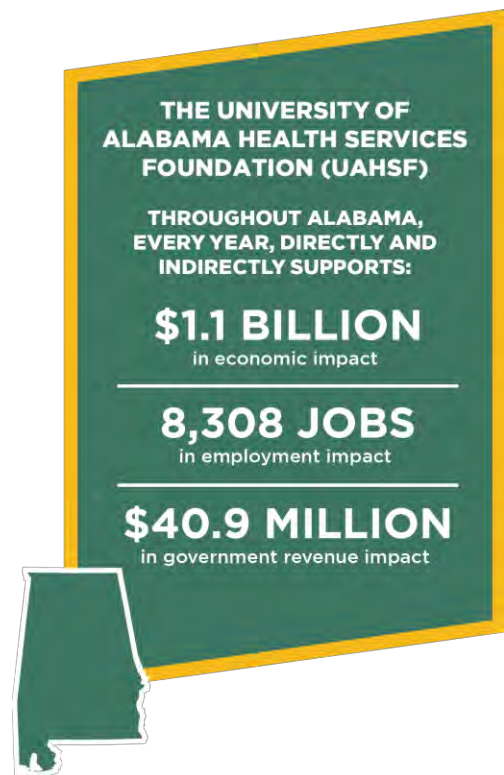
Direct spending by UAHSF generates economic activity throughout the state of Alabama. In FY16, the direct spending of UAHSF in combination with the indirect and induced impacts of dollars’ being re-spent throughout the economy generated **\$1.1 billion** in overall economic impact (\$522.4 million in direct impact and \$537.3 million in indirect and induced impact).

### PROVIDING AND SUPPORTING JOBS

In FY16, UAHSF directly employed 3,942 individuals (full-time or part-time positions). This direct employment generates additional spending throughout the state that in turn supports additional indirect and induced jobs created when UAHSF and its employees spend in the region and state. In total, UAHSF supports **8,308 jobs** throughout the state of Alabama.

### GENERATING STATE AND LOCAL GOVERNMENT INCOME

State and local government revenues attributable to the presence of UAHSF totaled **\$40.9 million** in FY16.



## APPENDIX C: UAB HEALTH SYSTEM CORPORATE OFFICE – TOTAL IMPACT

The following impact values for the UAB Health System Corporate Office are a subset of the impact values presented in the UAB Health System section of this report. The UAB Health System Corporate Office is one of seven components of the UAB Health System presented previously.

### GENERATING ECONOMIC ACTIVITY

Direct spending by the UAB Health System Corporate Office generates economic activity throughout the state of Alabama. In FY16, the direct spending of the UAB Health System Corporate Office in combination with the indirect and induced impacts of dollars' being re-spent throughout the economy generated **\$64.3 million** in overall economic impact (\$34.3 million in direct impact and \$30.0 million in indirect and induced impact).

### PROVIDING AND SUPPORTING JOBS

In FY16, the UAB Health System Corporate Office directly employed 170 individuals (full-time or part-time positions). This direct employment generates additional spending throughout the state that in turn supports additional indirect and induced jobs created when the UAB Health System Corporate Office and its employees spend in the region and state. In total, the UAB Health System Corporate Office supports **393 jobs** throughout the state of Alabama.

### GENERATING STATE AND LOCAL GOVERNMENT INCOME

State and local government revenues attributable to the presence of the UAB Health System Corporate Office totaled more than **\$2.1 million** in FY16.



## APPENDIX D: TRITON HEALTH SYSTEMS / VIVA HEALTH GROUP – TOTAL IMPACT

Triton Health Systems and Viva Health Group (Triton / Viva) are health insurance plans and members of the UAB Health System offering customers competitive benefits, outstanding value and quality providers. Since its establishment in 1995, Viva Health has grown to be one of the largest health plans in the state of Alabama.

The following impact values for Triton / Viva are a subset of the impact values presented in the UAB Health System section of this report. Triton / Viva is one of seven components of the UAB Health System presented previously.

### GENERATING ECONOMIC ACTIVITY

Direct spending by Triton / Viva generates economic activity throughout the state of Alabama. In FY16, the direct spending of Triton / Viva in combination with the indirect and induced impacts of dollars' being re-spent throughout the economy generated **\$109.9 million** in overall economic impact (\$59.0 million in direct impact and \$50.9 million in indirect and induced impact).

### PROVIDING AND SUPPORTING JOBS

In FY16, Triton / Viva directly employed 478 individuals (full-time or part-time positions). This direct employment generates additional spending throughout the state that in turn supports additional indirect and induced jobs created when Triton / Viva and its employees spend in the region and state. In total, Triton / Viva supports **874 jobs** throughout the state of Alabama.

### GENERATING STATE AND LOCAL GOVERNMENT INCOME

State and local government revenues attributable to the presence of Triton / Viva totaled **\$3.7 million** in FY16.



## APPENDIX E: BAPTIST HEALTH SYSTEM – TOTAL IMPACT

Nestled in the heart of Alabama’s state capital (Montgomery) is Baptist Health, the area’s premier health care provider and tertiary referral center. Baptist Health is a three-hospital, nonprofit, faith-based system serving central Alabama. Baptist Health is also the largest nongovernmental employer in the area, with nearly 3,400 employees.

Baptist Health is an affiliate of UAB. With more than 525 Baptist Health-affiliated physicians, a seasoned clinical staff and a comprehensive offering of medical services, Baptist Health also serves the community and local businesses with a wide range of wellness programs and services designed to help people live healthier and happier lives.

The following impact values for Baptist Health are a subset of the impact values presented in the UAB Health System section of this report. Baptist Health is one of seven components of the UAB Health System presented previously.



### GENERATING ECONOMIC ACTIVITY

Direct spending by Baptist Health generates economic activity throughout the state of Alabama. In FY16, the direct spending of Baptist Health in combination with the indirect and induced impacts of dollars’ being re-spent throughout the economy generated **\$1.2 billion** in overall economic impact (\$666.4 million in direct impact and \$483.7 million in indirect and induced impact).

### PROVIDING AND SUPPORTING JOBS

In FY16, Baptist Health directly employed 4,077 individuals (full-time or part-time positions). This direct employment generates additional spending throughout the state that in turn supports additional indirect and induced jobs created when Baptist Health and its employees spend in the region and state. In total, Baptist Health supports **7,842 jobs** throughout the state of Alabama.

### GENERATING STATE AND LOCAL GOVERNMENT INCOME

State and local government revenues attributable to the presence of Baptist Health totaled **\$35.2 million** in FY16.



## APPENDIX F: MEDICAL WEST – TOTAL IMPACT

Memorial Hospital was founded in 1964 to serve the residents of western Jefferson County. Shortly after its inception, Memorial Hospital was sold to Dr. Ben Carraway and the legendary Blue Star was placed on the roof. The facility was renamed Bessemer Carraway until 2003, when UAB Health System partnered together with Bessemer Carraway to complement one of the most robust health systems in the country.

Today, Medical West is a 310-bed acute care hospital offering a wide range of diagnostic, surgical, medical, rehabilitation and emergency services. Primary care physicians, specialists and sub-specialists have offices located on the Medical West main campus. Residents of western Jefferson County and Birmingham metro area can benefit from the convenience of Medical West health centers in their neighborhoods.

The following impact values for Medical West are a subset of the impact values presented in the UAB Health System section of this report. Medical West is one of seven components of the UAB Health System presented previously.



### GENERATING ECONOMIC ACTIVITY

Direct spending by Medical West generates economic activity throughout the state of Alabama. In FY16, the direct spending of Medical West in combination with the indirect and induced impacts of dollars' being re-spent throughout the economy generated **\$169.0 million** in overall economic impact (\$79.5 million in direct impact and \$89.5 million in indirect and induced impact).

### PROVIDING AND SUPPORTING JOBS

In FY16, Medical West directly employed 1,331 individuals (full-time or part-time positions). This direct employment generates additional spending throughout the state that in turn supports additional indirect and induced jobs created when Medical West and its employees spend in the region and state. In total, Medical West supports **2,045 jobs** throughout the state of Alabama.

### GENERATING STATE AND LOCAL GOVERNMENT INCOME

State and local government revenues attributable to the presence of Medical West totaled **\$7.0 million** in FY16.

## APPENDIX G: UAB CALLAHAN EYE HOSPITAL AUTHORITY – TOTAL IMPACT

The UAB Callahan Eye Hospital Authority (Callahan Eye Hospital) is the state’s only facility dedicated to providing quality medical and surgical eye care to the people of Alabama and the Southeast. Callahan Eye Hospital’s primary business consists of outpatient ophthalmology and ambulatory surgery, making it one of the busiest ophthalmology surgery centers in the country.

Callahan Eye Hospital is/offers:

- One of the most comprehensive eye care facilities in the Southeast with 40-plus years’ experience.
- 24-hour, seven-day-a-week eye emergency room and the region’s only Level I Ocular Trauma Center.
- Comprehensive eye care and emergency care for accident related eye trauma; over 11,500 eye surgeries, 5,799 emergency visits, 74,483 clinic visits and much more.
- Only hospital in Alabama dedicated entirely to eye care, and one of few worldwide focused on developing advances in ophthalmology.



The following impact values for Callahan Eye Hospital are a subset of the impact values presented in the UAB Health System section of this report. Callahan Eye Hospital is one of seven components of the UAB Health System presented previously.

### GENERATING ECONOMIC ACTIVITY

Direct spending by Callahan Eye Hospital generates economic activity throughout the state of Alabama. In FY16, the direct spending of Callahan Eye Hospital in combination with the indirect and induced impacts of dollars’ being re-spent throughout the economy generated **\$103.9 million** in overall economic impact (\$55.7 million in direct impact and \$48.2 million in indirect and induced impact).



## **PROVIDING AND SUPPORTING JOBS**

In FY16, Callahan Eye Hospital directly employed 301 individuals (full-time or part-time positions). This direct employment generates additional spending throughout the state that in turn supports additional indirect and induced jobs created when Callahan Eye Hospital and its employees spend in the region and state. In total, Callahan Eye Hospital supports **676 jobs** throughout the state of Alabama.

## **GENERATING STATE AND LOCAL GOVERNMENT INCOME**

State and local government revenues attributable to the presence of Callahan Eye Hospital totaled **\$3.7 million** in FY16.