

UAB Credit Hour Production, Summer Semester 2014

Summer to summer comparison by school

■ SUMMER 2014 ■ SUMMER 2013

		% CHANGE SUMMER 2013 to SUMMER 2014	BY LEVEL	
			UG	GRADUATE
ARTS AND SCIENCES				
	19,591	-7.44%	-4.74%	-22.98%
	21,165			
BUSINESS				
	8,896	+20.98%	+15.56%	+38.03%
	7,353			
DENTISTRY (DENTAL ASSISTING)				
	247	-9.52%	-9.52%	
	273			
EDUCATION				
	5,737	+0.40%	-2.39%	+1.69%
	5,714			
ENGINEERING				
	2,532	-0.74%	-15.68%	+5.58%
	2,551			
HEALTH PROFESSIONS				
	10,302	+4.08%	+0.98%	+6.01%
	9,898			
JOINT HEALTH SCIENCES				
	2,683	-5.89%	+66.67%	-6.05%
	2,851			
NURSING				
	15,766	+22.55%	+50.98%	+13.12%
	12,865			
OPTOMETRY (VISION SCIENCE)				
	184	-3.66%	—	-3.66%
	191			
PUBLIC HEALTH				
	1,605	+21.50%	—	+10.60%
	1,321			

Total for reporting*

		CHANGE 2013-2014	BY LEVEL	
			UG	GRADUATE
SUMMER 2014	67,983	+5.12%	+4.88%	+5.37%
SUMMER 2013	64,672			

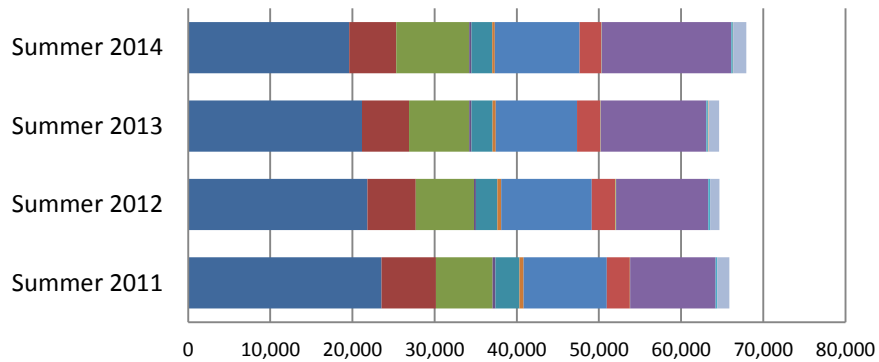
* Includes Cooperative Education, Graduate School, Military Science, and Provost's Office.
DMD, MD, and OD programs do not generate credit hours.

Source: UAB Institutional Effectiveness and Analysis

UAB CREDIT HOUR PRODUCTION

	<u>Summer 2013</u>	<u>Summer 2014</u>	<u># Change</u>	<u>% Change</u>
<u>Arts & Sciences (excl Educ)</u>				
Undergraduate	18,041	17,185	-856	-4.74%
Graduate	3,124	2,406	-718	-22.98%
Total	21,165	19,591	-1,574	-7.44%
<u>Business</u>				
Undergraduate	5,578	6,446	868	15.56%
Graduate	1,775	2,450	675	38.03%
Total	7,353	8,896	1,543	20.98%
<u>Cooperative Education</u>				
Undergraduate	22	29	7	29.55%
<u>Dentistry (Dental Assisting)</u>				
Undergraduate	273	247	-26	-9.52%
<u>Education</u>				
Undergraduate	1,798	1,755	-43	-2.39%
Graduate	3,916	3,982	66	1.69%
Total	5,714	5,737	23	0.40%
<u>Engineering</u>				
Undergraduate	759	640	-119	-15.68%
Graduate	1,792	1,892	100	5.58%
Total	2,551	2,532	-19	-0.74%
<u>Graduate School</u>				
Graduate	377	330	-47	-12.47%
<u>Health Professions</u>				
Undergraduate	3,792	3,829	37	0.98%
Graduate	6,106	6,473	367	6.01%
Total	9,898	10,302	404	4.08%
<u>Joint Health Sciences</u>				
Undergraduate	6	10	4	66.67%
Graduate	2,845	2,673	-172	-6.05%
Total	2,851	2,683	-168	-5.89%
<u>Military Science</u>				
Undergraduate	35	23	-12	-34.29%
<u>Nursing</u>				
Undergraduate	3,205	4,839	1,634	50.98%
Graduate	9,660	10,927	1,267	13.12%
Total	12,865	15,766	2,901	22.55%
<u>Optometry (Vision Science)</u>				
Undergraduate	0	0	0	-
Graduate	191	184	-7	-3.66%
Total	191	184	-7	-3.66%
<u>Provost's Office</u>				
Undergraduate	56	58	2	3.57%
<u>Public Health</u>				
Undergraduate	0	144	144	-
Graduate	1,321	1,461	140	10.60%
Total	1,321	1,605	284	21.50%
<u>Total UAB</u>				
Undergraduate	33,565	35,205	1,640	4.88%
Graduate	31,107	32,778	1,671	5.37%
Total	64,672	67,983	3,311	5.12%

UAB Summer Credit Hour Production by School



	Summer 2011	Summer 2012	Summer 2013	Summer 2014
Arts and Sciences	23,545	21,810	21,165	19,591
Education	6,606	5,892	5,714	5,737
Business	6,914	7,088	7,353	8,896
Dental Assisting	325	260	273	247
Engineering	2,938	2,592	2,551	2,532
Graduate School	512	480	377	330
Health Professions	10,126	11,013	9,898	10,302
Joint Health Sciences	2,786	2,886	2,851	2,683
Military Science	62	52	35	23
Nursing	10,379	11,229	12,865	15,766
Optometry	224	230	191	184
Provost's Office	0	0	56	58
Public Health	1,447	1,155	1,321	1,605

UAB Summer Credit Hour Production by Level

