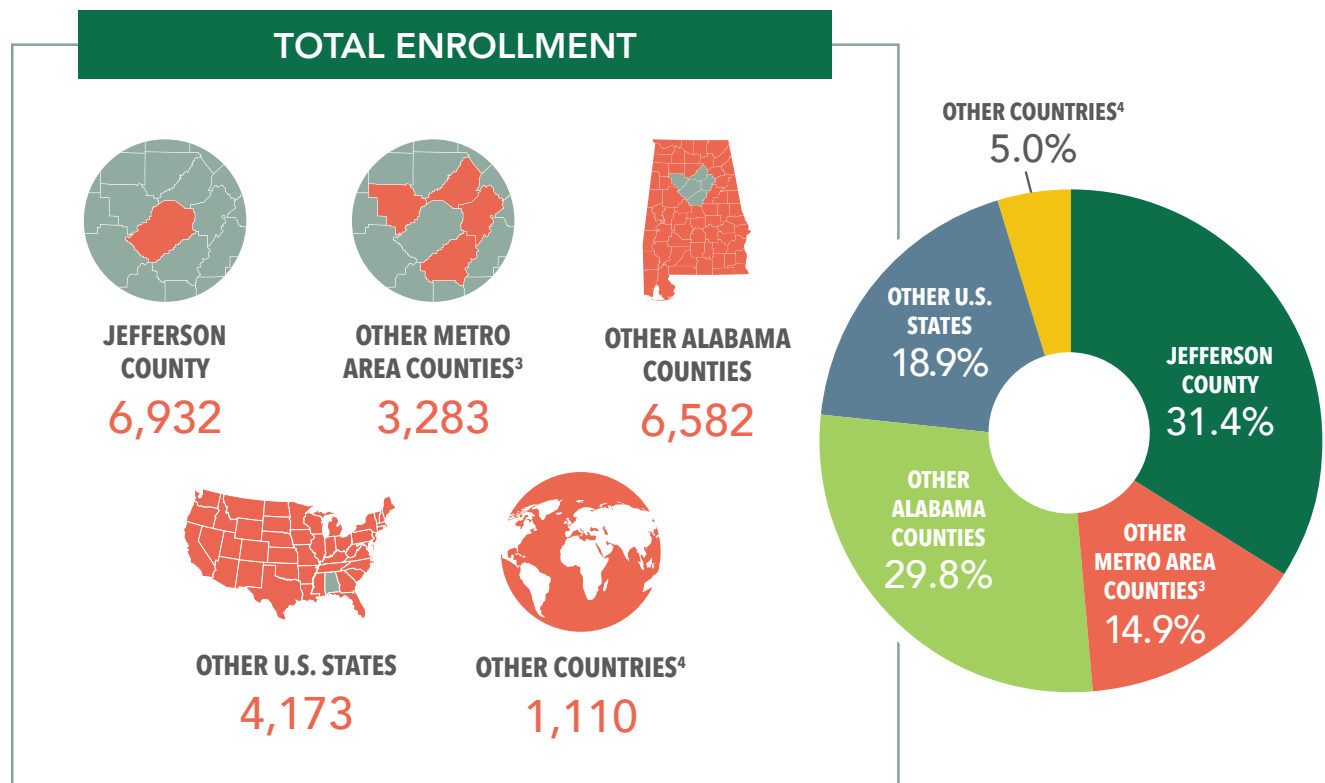


# UAB ENROLLMENT BY STUDENT SOURCE

FALL 2019

	FRESHMEN <sup>1</sup>	UNDERGRADUATE	GRADUATE	DMD/MD/OD	TOTAL <sup>2</sup>
JEFFERSON COUNTY	561	4,447	1,939	546	<b>6,932</b>
OTHER METRO AREA COUNTIES <sup>3</sup>	427	2,524	677	82	<b>3,283</b>
OTHER ALABAMA COUNTIES	966	4,772	1,434	376	<b>6,582</b>
OTHER U.S.	361	1,694	2,319	160	<b>4,173</b>
OTHER COUNTRIES <sup>4</sup>	31	399	708	3	<b>1,110</b>
<b>TOTAL STUDENTS</b>	<b>2,346</b>	<b>13,836</b>	<b>7,077</b>	<b>1,167</b>	<b>22,080</b>



<sup>1</sup> First-Time Freshmen

<sup>2</sup> Blount, Shelby, St. Clair, and Walker Counties

<sup>3</sup> Does not include Advanced Professionals

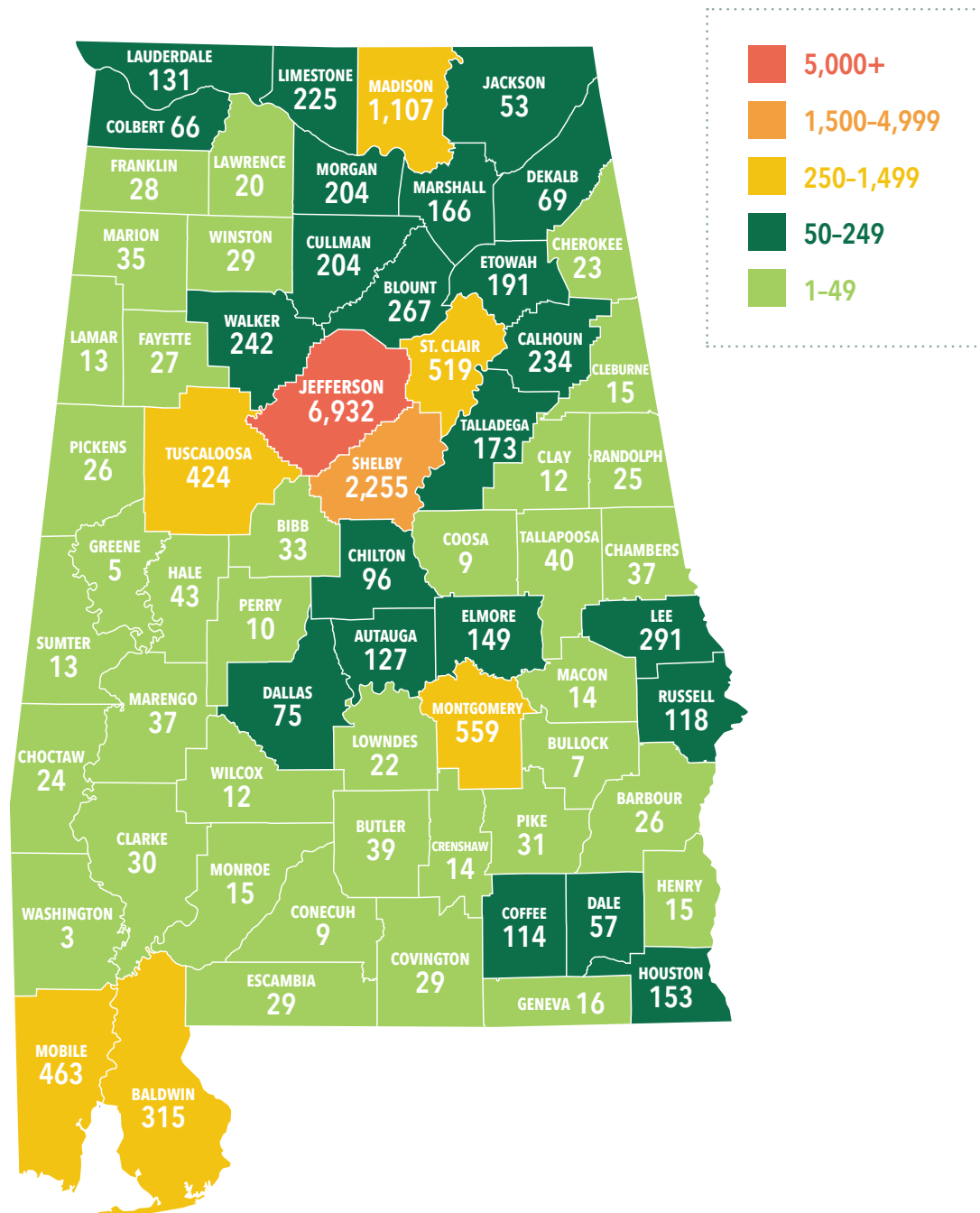
<sup>4</sup> Includes U.S. Citizens sourced from outside the United States

SOURCE: UAB Institutional Effectiveness and Analysis

# UAB ENROLLMENT BY STUDENT SOURCE

## ALABAMA COUNTIES

FALL 2019

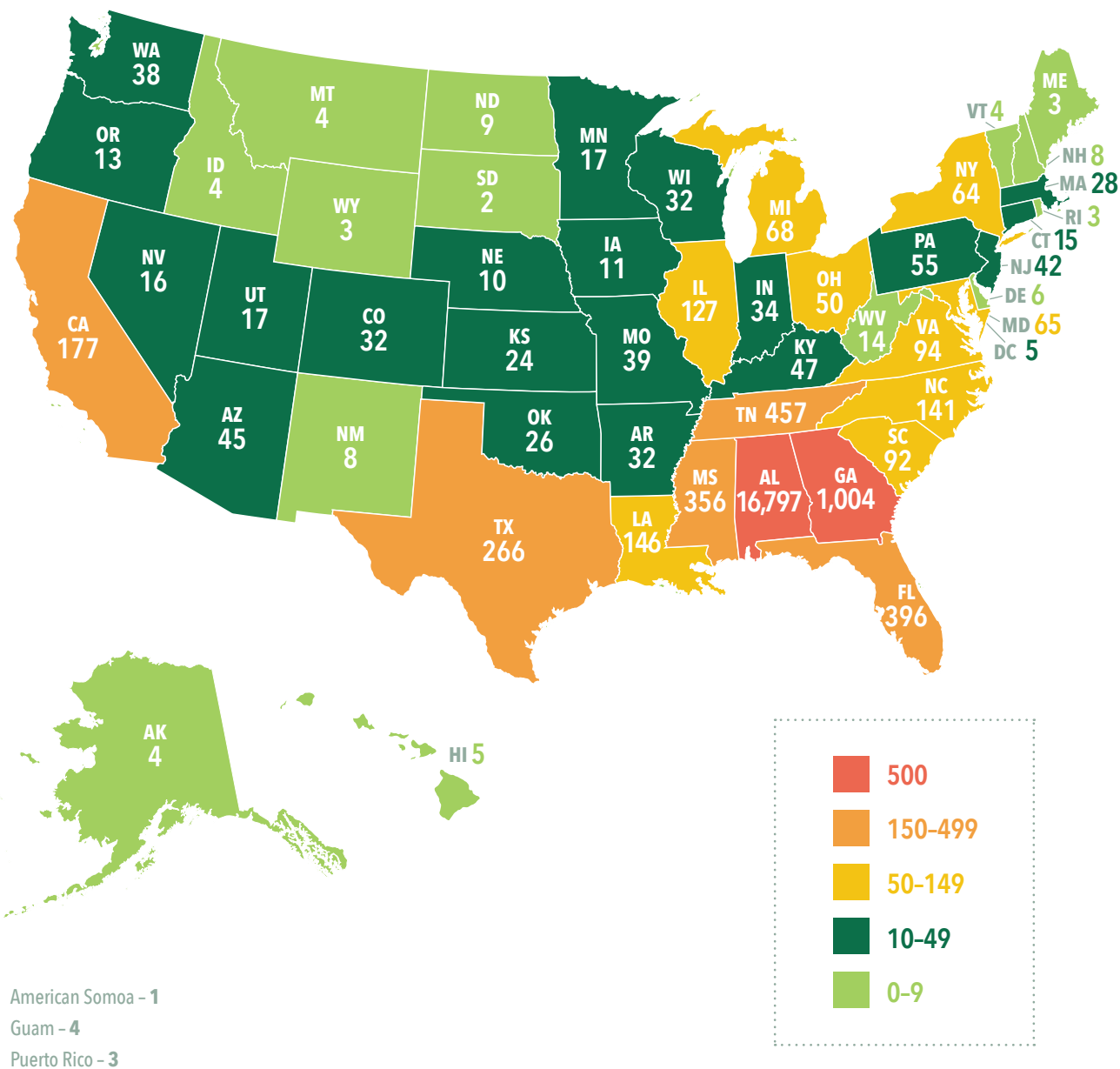


SOURCE: UAB Institutional Effectiveness and Analysis

# UAB ENROLLMENT BY STUDENT SOURCE

## U.S. STATES

FALL 2019



SOURCE: UAB Institutional Effectiveness and Analysis