

# FACTS & FIGURES

2004/2005



**UAB** THE UNIVERSITY OF  
ALABAMA AT BIRMINGHAM

25<sup>th</sup>  
EDITION

# **FACTS & FIGURES 2004-05**

Twenty-fifth Edition

February 2005

Office of Institutional Studies and Services  
UNIVERSITY OF ALABAMA AT BIRMINGHAM  
Birmingham, Alabama 35294-0104  
(205) 934-2384

## FOREWORD

The Office of Institutional Studies and Services is pleased to present *Facts & Figures 2004-05*. This is the 25<sup>th</sup> edition of the UAB factbook and the eighth edition available electronically on the web. *Facts & Figures* is compiled by ISS but reflects contributions from offices all over campus. We remain grateful for our contributors' continued assistance.

In recent years the pace of technological development and the need for timely management information have tended to limit the life span and utility of the printed factbook. Therefore, this document should not be used in isolation. Rather, it should be considered an archival companion product for similar information that is continually updated on the Institutional Studies and Services web pages. All the data contained in this document can be viewed in their most current versions at [www.iss.uab.edu](http://www.iss.uab.edu).

Our objective with this factbook is to produce a useful and usable resource for a variety of information needs. Therefore, we welcome and appreciate your comments and suggestions about the content of *Facts & Figures*.

This year's cover photograph is our third in full color. The photograph is of a Frank Stella sculpture recently acquired through the generous support of Marvin and Ruth Engel. Owned by the Birmingham Museum of Art and located on the Engel Plaza at the Alys Stephens Center on the UAB campus, "Prinzessin Natalie" was named after a character in a Henrich von Kleist drama. This work is constructed of stainless steel, aluminum, painted fiberglass and carbon fiber, and the piece measures 18 feet tall and 12 feet wide.

## TABLE OF CONTENTS

### **GENERAL INFORMATION**

Campus Map . . . . .	3
UAB Vision, Mission, and Goals. . . . .	5
The Board of Trustees . . . . .	6
Administration . . . . .	7
UAB Organizational Structure . . . . .	9
Academic Departments and Chairs . . . . .	10
Significant Dates . . . . .	13
UAB Presidents . . . . .	14
Honorary Degrees Conferred . . . . .	15
President's Medal . . . . .	17
Distinguished Alumni Award . . . . .	17
Program Accreditation . . . . .	18
University Hospital Statistical Highlights . . . . .	24
Library Statistics Fall 2004. . . . .	25

### **STUDENT INFORMATION**

Fall Semester 2004 Enrollment by School and Level . . . . .	29
Fall Semester 2004 Enrollment Full-time and Part-time by Race and Gender . . . . .	30
Fall Semester 2004 Student Demographics . . . . .	
Undergraduate . . . . .	31
Entering Freshman . . . . .	32
Graduate . . . . .	33
First Professional . . . . .	34
UAB Students by Source Fall 2004 . . . . .	35
Fall Enrollment by School 1998-2004 . . . . .	36
Fall Enrollment by Class 1998-2004 . . . . .	36
Fall Enrollment by Student Level 1969-2004 . . . . .	37
Fall Headcount Enrollment 1969-2004 (Chart) . . . . .	38
Fall Enrollment Full-time and Part-time by Gender 1983-2004 . . . . .	39
Fall Enrollment by Student Source 2000-2004 . . . . .	39
Fall Enrollment by Race and Level 1999-2004 . . . . .	40
Credit Hour Production Fall 2004 . . . . .	41
Annual Credit Hour Production by School 1997-98 through 2003-04 . . . . .	42
Degrees Offered at UAB . . . . .	44
Total Degrees Available . . . . .	44
Degrees Conferred July 1, 1969 - June 30, 2004 . . . . .	48
Degrees Awarded by School 1969-70 through 2003-04 . . . . .	49
Required Student Tuition and Fees Fall 2004 . . . . .	51
Student Aid Funds Available 1997-98 through 2003-04 . . . . .	53
Athletics . . . . .	54

## **FACULTY AND STAFF**

Work Force FY 2004-05 .....	57
Work Force by Area, Status, Gender, and Job Category 1998-99 through 2004-05.....	58
Work Force by Area and by Status 1998-99 through 2004-05 (Charts) .....	59
Full-Time Work Force and Payroll 1995 through 2004 .....	60
Endowed Positions .....	61
Faculty Awards and Honors .....	64

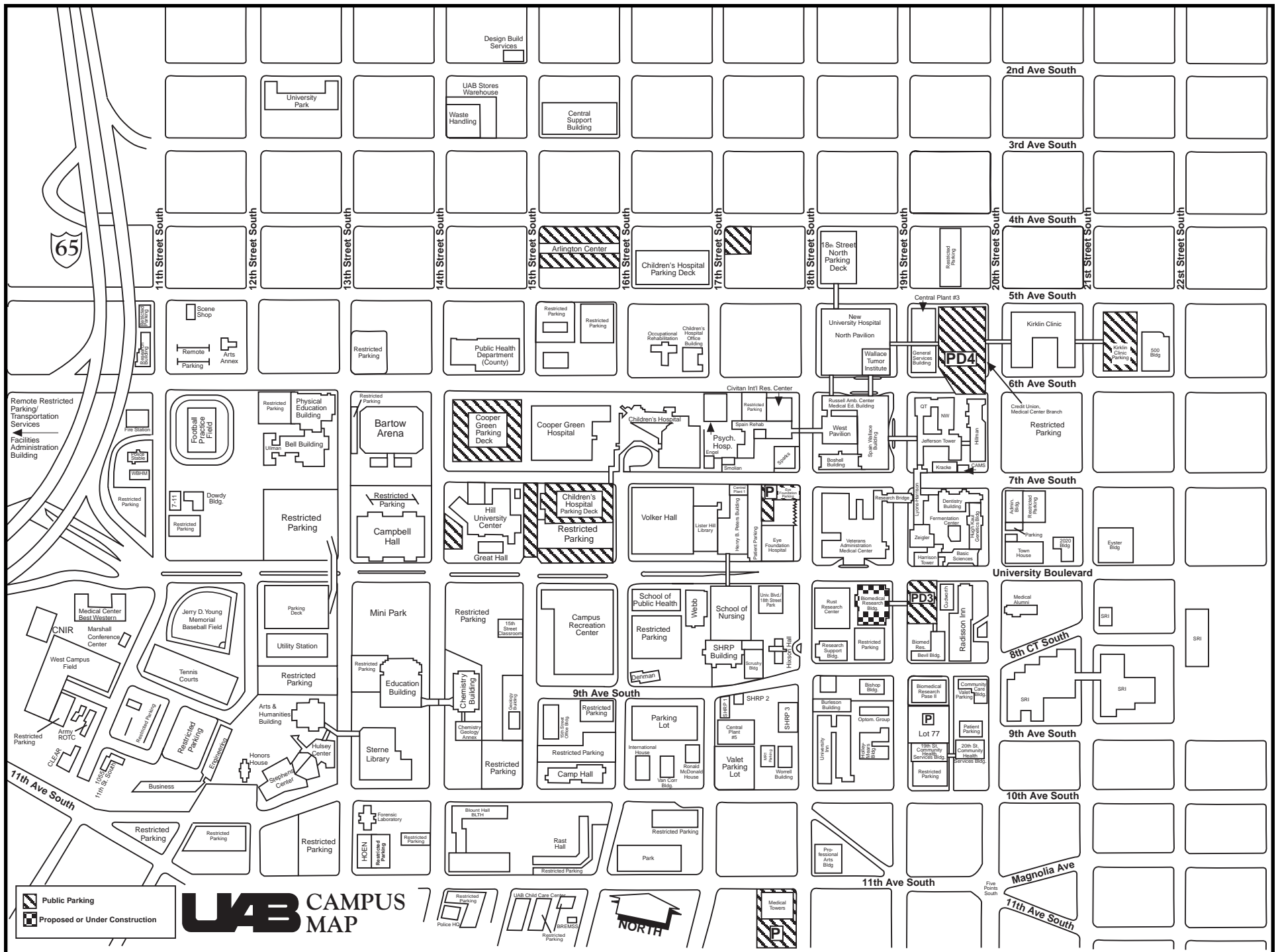
## **PHYSICAL AND FINANCIAL RESOURCES**

Selected Financial Highlights FY 1999-2000 through FY 2003-04 .....	71
Financial Profile FY 2003-04 Actual .....	72
Financial Profile FY 2003-04 Actual (Chart) .....	73
Financial Profile FY 2004-05 Budgeted .....	74
Primary Program Expenditures for FY 1998-99 through FY 2003-04 .....	75
Administrative Expenditures for FY 1998-99 through FY 2003-04.....	75
State Funding from the Educational Trust Fund as Enacted FY 1967-68 to FY 2004-05 .....	76
Current Funds Restricted Research Expenditures FY 1998-99 through 2002-03.....	78
Summary of Active Grants and Contracts as of September 1, 2004 .....	80
Active Grants and Contracts 1990 through 2004 .....	81
Building Summary Fall 2004 .....	82
Space by Funding Unit .....	87
Building Replacement Costs FY 2003-04 .....	87
Fund Sources for New Construction and Major Renovations 1969-2004 .....	87
Capitalized Expenditures for New Construction and Major Renovations 1969-2004.....	87
Space Distribution (as of September 30, 2003) .....	88

# GENERAL INFORMATION







## **UAB'S PLAN FOR THE FUTURE**

### **Vision:**

An internationally renowned research university – a first choice for education and health care.

### **Mission:**

UAB is a research university and academic health center that discovers, teaches and applies knowledge for the intellectual, cultural, social and economic benefit of Birmingham, the state and beyond.

### **Goals:**

- (1) Undergraduate Education - We will achieve a highly effective undergraduate educational experience to give students the best possible preparation for productive and meaningful careers and lives that benefit society.
- (2) Graduate and Professional Education - We will ensure that graduate and professional programs are exceptional in preparing students to lead, teach, conduct research, and provide professional services.
- (3) Research and Scholarship - We will expand and improve UAB's research and scholarship capability to acquire and disseminate new knowledge that benefits society and that further positions UAB as an internationally recognized research university.
- (4) Service to Community and State - We will enhance our value and reputation in the state by working effectively with partners to help advance community and state goals in education, health, quality of life and economic development.
- (5) Community and Financial Support - We will aggressively pursue and secure community and financial support.
- (6) Work Environment - We will create a positive, supportive and diverse work environment in which faculty and staff can excel.



# THE BOARD OF TRUSTEES OF THE UNIVERSITY OF ALABAMA

The Honorable Bob Riley  
Governor of Alabama  
President ex officio

Dr. Joseph Morton  
State Superintendent of Education  
Ex officio

## TRUSTEES (by Congressional district)

First:	Angus R. Cooper II, Mobile Marietta M. Urquhart, Mobile	Fifth:	Peter L. Lowe, Huntsville Joe H. Ritch, Huntsville
Second:	Joseph C. Espy III, Montgomery James W. Wilson III, Montgomery	Sixth:	Paul W. Bryant, Jr., Tuscaloosa John J. McMahon, Jr., Birmingham (President <u>pro tempore</u> )
Third:	Vanessa Leonard, Rockford John Russell Thomas, Alexander City	Seventh:	Karen Phifer Brooks, Tuscaloosa John H. England, Jr., Tuscaloosa Andria S. Hurst, Birmingham
Fourth:	Sidney L. McDonald, Arab Finis E. St. John IV, Cullman		

## TRUSTEES EMERITI

T. Massey Bedsole, Mobile  
Frank H. Bromberg, Jr., Birmingham  
John A. Caddell, Decatur  
Oliver H. Delchamps, Jr., Fairhope  
Garry Neil Drummond, Birmingham  
Jack Edwards, Mobile  
Joseph L. Fine, Montgomery  
Sandra Hullett, M.D., Eutaw  
Olin B. King, Huntsville  
John T. Oliver, Jr., Jasper  
Martha Simms Rambo, Huntsville  
Yetta G. Samford, Jr., Opelika  
Maury D. Smith, Montgomery  
Cleophus Thomas, Jr., Anniston  
Cordell Wynn, Tuscaloosa

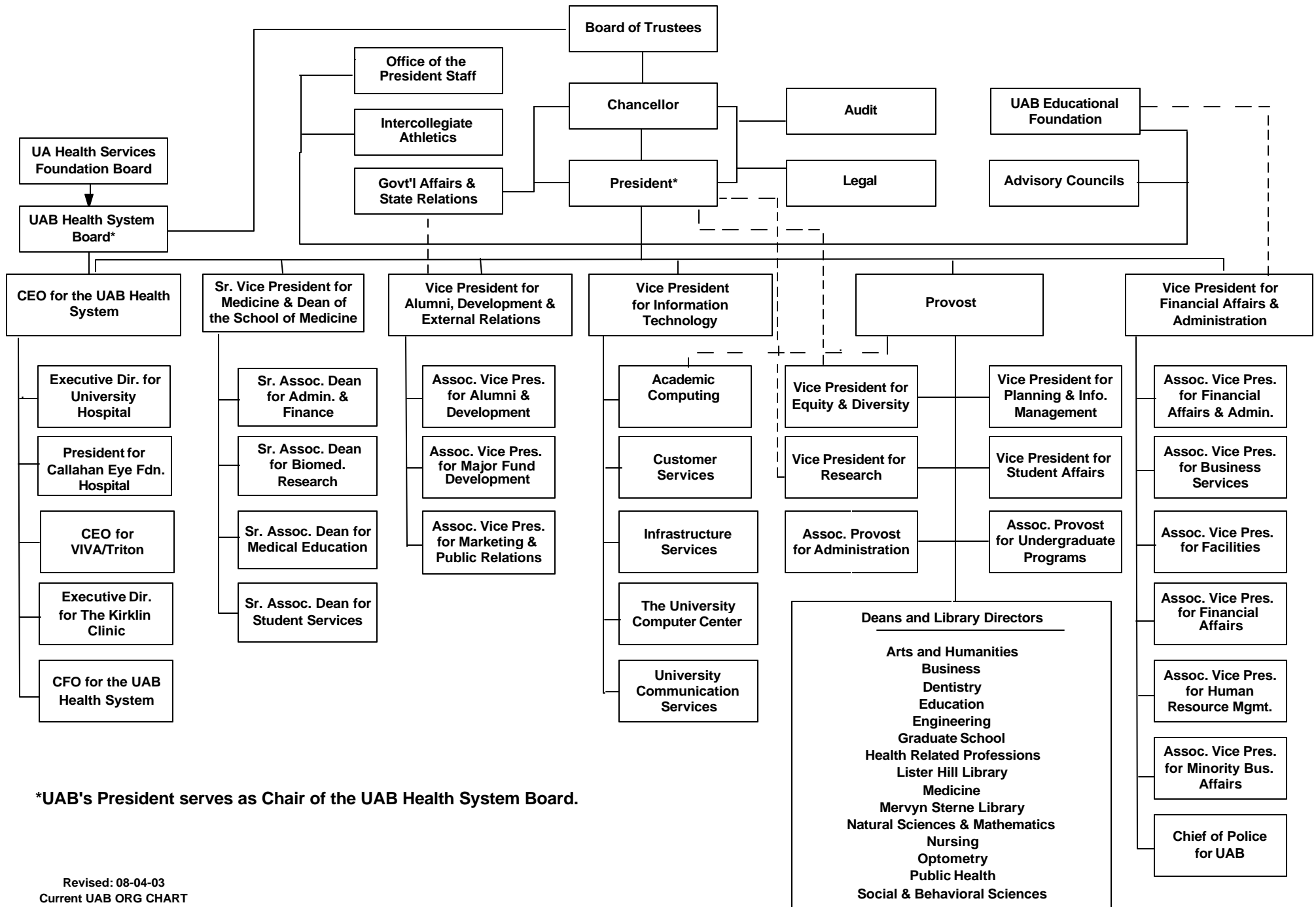
\*\*\*\*\*

Chancellor: Malcolm Portera, Ph.D.

Secretary of the Board: Michael A. Bownes

General Counsel: Ralph Smith

# UAB ORGANIZATIONAL STRUCTURE



\*UAB's President serves as Chair of the UAB Health System Board.

# UNIVERSITY ADMINISTRATION



**DR. CAROL Z. GARRISON**  
PRESIDENT



**DR. ELI CAPILOUTO**  
PROVOST



**DR. LOUIS DALE**  
VICE PRESIDENT FOR  
EQUITY AND DIVERSITY



**DR. VIRGINIA D. GAULD**  
VICE PRESIDENT FOR  
STUDENT AFFAIRS



**DAVID HOIDAL**  
CHIEF EXECUTIVE OFFICER,  
UAB HEALTH SYSTEM



**DR. SHIRLEY SALLOWAY KAHN**  
VICE PRESIDENT FOR  
DEVELOPMENT, ALUMNI, AND  
EXTERNAL RELATIONS



**DR. JOHN M. LYONS**  
VICE PRESIDENT FOR  
PLANNING AND INFORMATION  
MANAGEMENT



**DR. RICHARD B. MARCHASE**  
VICE PRESIDENT  
FOR RESEARCH



**RICHARD L. MARGISON**  
VICE PRESIDENT FOR  
FINANCIAL AFFAIRS AND  
ADMINISTRATION



**DR. ROBERT R. RICH**  
SENIOR VICE PRESIDENT  
FOR MEDICINE AND DEAN,  
SCHOOL OF MEDICINE



**SHEILA SANDERS**  
VICE PRESIDENT FOR  
INFORMATION TECHNOLOGY

## **UAB ADMINISTRATION**

<b><u>Unit/School (Date of Establishment)</u></b>	<b><u>Dean/Administrator</u></b>
Arts and Humanities (1973)	Bert Brouwer, M.F.A., Dean
Business (1971)	Robert E. Holmes, Ph.D., Dean
Dentistry (1945)	Huw F. Thomas, Ph.D., Dean
Education (1971)	Michael J. Froning, Ed.D., Dean
Engineering (1971)	Linda C. Lucas, Ph.D., Dean
Health Related Professions (1969)	Harold P. Jones, Ph.D., Dean
Medicine (1945*)	Robert R. Rich, M.D., Senior Vice President/Dean
Natural Sciences and Mathematics (1973)	Lowell E. Wenger, Ph.D., Dean
Nursing (1967*)	Doreen C. Harper, Ph.D., Dean
Optometry (1969)	John F. Amos, O.D., Dean
Public Health (1981)	Max Michael III, M.D., Dean
Social and Behavioral Sciences (1973)	Tennant S. McWilliams, Ph.D., Dean
Graduate School (1970)	Bryan D. Noe, Ph.D.
UAB University Hospital (1945)	Scott E. Buchalter, M.D., Chief of Staff

\* Moved to Birmingham from Tuscaloosa.

## UAB ACADEMIC DEPARTMENTS AND CHAIRS

### **School of Arts and Humanities**

Art and Art History  
Communication Studies  
English  
Foreign Languages and Literatures  
Music  
Philosophy  
Theatre

### **Chair**

Gary Chapman, M.F.A.  
Larry Powell, Ph.D., Interim  
Marilyn J. Kurata, Ph.D.  
Sheri Spaine Long, Ph.D.  
Jeffrey W. Reynolds, D.M.A.  
Harold A. Kincaid, Ph.D.  
Marc Powers, M.F.A.

### **School of Business**

Accounting and Information Systems  
Finance, Economics, and Quantitative Methods  
Management, Marketing, and Industrial Distribution

### **Chair**

Frank M. Messina, Ph.D.  
Lance A. Nail, Ph.D.  
Robert A. Robicheaux, Ph.D.

### **School of Dentistry**

Comprehensive Dentistry  
Diagnostic Sciences  
Endodontics and Pulp Biology  
Oral and Maxillofacial Surgery  
Oral Biology  
Orthodontics  
Pediatric Dentistry  
Periodontology  
Prosthodontics and Biomaterials

### **Chair**

Peng-Ru Liu, D.M.D., D.D.S.  
Gregg H. Gilbert, D.D.S.  
Paul D. Eleazer, D.D.S.  
Peter D. Waite, D.D.S., M.D.  
Noel K. Childers, D.D.S., M.D.  
P. Lionel Sadowsky, D.M.D.  
John B. Thornton, D.M.D.  
Michael S. Reddy, D.M.D., Interim  
Sandra Jean O'Neal, D.M.D.

### **School of Education**

Curriculum and Instruction  
Human Studies  
Leadership, Special Education and Foundations

### **Chair**

Charles Calhoun, Ph.D.  
David M. Macrina, Ph.D.  
W. Boyd Rogan, Ed.D.

### **School of Engineering**

Biomedical Engineering  
Civil and Environmental Engineering  
Electrical and Computer Engineering  
Materials Science and Engineering  
Mechanical Engineering

### **Chair**

Timothy M. Wick, Ph.D.  
Fouad H. Fouad, Ph.D.  
Gregg L. Vaughn, Ph.D.  
J. Barry Andrews, Ph.D.  
Bharat K. Soni, Ph.D.

## **UAB ACADEMIC DEPARTMENTS AND CHAIRS (CONTINUED)**

### **School of Health Related Professions**

Critical Care  
Diagnostic and Therapeutic Sciences  
Health Services Administration  
Nutrition Sciences\*  
Occupational Therapy  
Physical Therapy

### **Chair**

Edward D. Huechtker, Sr., Ph.D.  
Victor Skrinska, Ph.D.  
Gerald L. Glandon, Ph.D.  
W. Timothy Garvey, M.D.  
Laura K. Vogtle, Ph.D.  
Sharon E. Shaw, Dr.P.H.

### **Joint Health Sciences**

Biochemistry and Molecular Genetics  
Cell Biology  
Genetics  
Microbiology  
Neurobiology  
Nutrition Sciences\*  
Pathology  
Pharmacology and Toxicology  
Physiology and Biophysics

### **Chair**

Tim M. Townes, Ph.D.  
Etty Benveniste, Ph.D.  
Bruce R. Korf, M.D.  
David D. Chaplin, M.D., Ph.D.  
John J. Hablitz, Ph.D., Interim  
W. Timothy Garvey, M.D.  
Jay M. McDonald, M.D.  
Robert B. Diasio, M.D.  
Dale J. Benos, Ph.D.

### **School of Medicine**

Anesthesiology  
Dermatology  
Emergency Medicine  
Family and Community Medicine  
Medicine  
Neurology  
Obstetrics and Gynecology  
Ophthalmology  
Pediatrics  
Physical Medicine and Rehabilitation  
Psychiatry and Behavioral Neurobiology  
Radiation Oncology  
Radiology  
Surgery

### **Chair**

James R. Boyce, M.D., Interim  
Craig A. Elmets, M.D.  
Thomas E. Terndrup, M.D.  
T. Michael Harrington, M.D.  
William E. Dismukes, M.D., Interim  
Ray L. Watts, M.D.  
John C. Hauth, M.D.  
Lanning B. Kline, M.D.  
Sergio B. Stagno, M.D.  
Amie B. Jackson, M.D.  
F. Cleveland Kinney, M.D., Ph.D., Interim  
James A. Bonner, M.D.  
Robert Koehler, M.D.  
Kirby I. Bland, M.D.

### **School of Natural Sciences and Mathematics**

Biology  
Chemistry  
Computer and Information Sciences  
Mathematics  
Physics

### **Chair**

Ken R. Marion, Ph.D.  
David E. Graves, Ph.D.  
Anthony Skjellum, Ph.D.  
Rudi Weikard, Ph.D.  
David L. Shealy, Ph.D.

\*Joint with the Schools of Dentistry, Health Related Professions, and Medicine.



## **UAB ACADEMIC DEPARTMENTS AND CHAIRS (CONTINUED)**

### **School of Nursing**

Undergraduate Studies  
Graduate Studies

Barbara G. Woodring, Ed.D.  
Elizabeth Stullenbarger, D.S.N.

### **School of Optometry**

Optometry  
Vision Sciences

### **Chair**

Jimmy D. Bartlett, O.D., Interim  
Paul Gamlin, Ph.D.

### **School of Public Health**

Biostatistics  
Environmental Health Sciences  
Epidemiology  
Health Behavior  
Health Care Organization and Policy  
Maternal and Child Health

### **Chair**

George Howard, Dr.P.H.  
Edward M. Postlethwait, Ph.D.  
Donna K. Arnett, Ph.D.  
Diane Grimley, Ph.D.  
Peter M. Ginter, Ph.D.  
Greg R. Alexander, M.P.H., Sc.D.

### **School of Social and Behavioral Sciences**

Anthropology and Social Work  
Government  
History  
Justice Sciences  
Psychology  
Sociology

### **Chair**

Christopher C. Taylor, Ph.D., Interim  
Steven H. Haeberle, Ph.D.  
James F. Tent, Ph.D.  
John J. Sloan III, Ph.D., Interim  
Carl E. McFarland, Jr., Ph.D.  
Ferris J. Ritchey, Ph.D.

## **SIGNIFICANT UAB DATES**

- 1821 - Board of Trustees of the University of Alabama created by the General Assembly
- 1936 - Extension Center of the University of Alabama opened in Birmingham
- 1945 - School of Medicine moved from Tuscaloosa to Birmingham and became a four-year school
- 1945 - Jefferson and Hillman Hospitals combined to serve as the teaching hospital for the School of Medicine
- 1948 - School of Dentistry, with Dr. Joseph F. Volker as dean, enrolled its first class
- 1955 - First Ph.D. earned on the Birmingham campus
- 1958 - Campus expansion began with acquisition of approximately 8.5 blocks (60 acres) from the Birmingham Housing Authority
- 1966 - Extension Center in Birmingham became the University of Alabama in Birmingham, one of three campuses of the University of Alabama
- 1966 - College of General Studies established
- 1966 - School of Health Services Administration established
- 1967 - School of Nursing moved from Tuscaloosa to Birmingham
- 1969 - UAB became an autonomous campus with Dr. Joseph F. Volker as its first president
- 1969 - School of Community and Allied Health Resources established by the Alabama Legislature and Regional Technical Institute established for health occupations training
- 1969 - School of Optometry established
- 1970 - Graduate School established
- 1970 - First degrees awarded by UAB
- 1971 - College of General Studies reorganized as University College with Schools of Business, Education, Engineering, and Arts and Sciences
- 1973 - School of Arts and Sciences restructured into Schools of Humanities, Natural Sciences and Mathematics, and Social and Behavioral Sciences
- 1975 - Funds appropriated by Legislature for the purchase of approximately 30 blocks (140 acres) of Urban Renewal lands for UAB expansion
- 1976 - Dr. Joseph F. Volker appointed first chancellor of the University of Alabama System
- 1977 - Dr. S. Richardson Hill, Jr. named second president
- 1981 - School of Public Health established
- 1984 - University of Alabama in Birmingham became University of Alabama at Birmingham
- 1987 - Dr. Charles A. McCallum named third president
- 1987 - School of Community and Allied Health became School of Health Related Professions
- 1988 - School of Humanities became School of Arts and Humanities
- 1989 - UAB exceeded \$100 million in active grants and contracts
- 1989 - Use of the designation "University College" discontinued

## **SIGNIFICANT UAB DATES (CONTINUED)**

- 1990 - 50,000th degree awarded by UAB
- 1992 - UAB's outpatient services moved to the newly constructed Kirklin Clinic
- 1993 - Dr. J. Claude Bennett named fourth president
- 1994 - UAB acquired Walker College, which became known as UAB Walker College
- 1994-95 - Certificate-level, junior college linkage programs (Regional Technical Institute) in the School of Health Related Professions phased out
- 1995 - Academic units reorganized under provost
- 1995 - UAB Health System established
- 1995 - UAB exceeded \$200 million in active grants and contracts
- 1997 - Mr. Paul Hardin named interim president
- 1997 - Dr. W. Ann Reynolds named fifth president
- 1998 - Relationship terminated between UAB and UAB Walker College
- 1999 - UAB launched the public phase of a \$250 million capital campaign, the largest capital campaign in its history; goal was later raised to \$350 million.
- 1999 - Southern Research Institute affiliated with UAB
- 2000 - UAB exceeded \$300 million in active grants and contracts
- 2001 - UAB moved to a semester academic calendar
- 2002 - University of Alabama Board of Trustees approved an affiliation agreement between the UAB Health System and Bessemer Carraway Medical Center
- 2002 - Dr. Malcolm Portera, Chancellor of the University of Alabama System, named interim president
- 2002 - Dr. Carol Z. Garrison named sixth president
- 2003 - Capital campaign officially ends on December 31, having raised \$388.7 million for UAB

## **UAB PRESIDENTS**

- Dr. Joseph F. Volker, 1969-1976
- Dr. S. Richardson Hill, Jr., 1977-1987
- Dr. Charles A. McCallum, 1987-1993
- Dr. J. Claude Bennett, 1993-1996
- Mr. Paul Hardin (Interim), 1997
- Dr. W. Ann Reynolds, 1997-2002
- Dr. Malcolm Portera (Interim), 2002
- Dr. Carol Z. Garrison, 2002-present

## HONORARY UAB DEGREES CONFERRED

<u>Name</u>	<u>Date Conferred*</u>	<u>Degree</u>
Champ Lyons	October 1, 1965	Doctor of Science
Tinsley Randolph Harrison	October 1, 1965	Doctor of Science
Walter Bouldin	August 29, 1966	Doctor of Laws
Matthew Francis McNulty, Jr.	August 22, 1969	Doctor of Science
Ruth Lawson Hanson	August 22, 1969	Doctor of Humanities
Joseph F. Volker	June 6, 1970	Doctor of Science
Bengt E. Gustafson	June 5, 1971	Doctor of Science
John A. Hand	June 5, 1971	Doctor of Laws
John Edward Meyer	June 4, 1972	Doctor of Humanities
Virginia Baxley	June 4, 1972	Master of Arts
Clyde Guss Cox	August 27, 1972	Master of Arts
Joseph Smolian	August 27, 1972	Doctor of Humanities
Clarence A. Hanson	June 9, 1974	Doctor of Literature
Samuel Richardson Hill, Jr.	June 9, 1975	Doctor of Science
Charles Alexander McCallum	June 9, 1975	Doctor of Science
Arthur Davis Shores	June 9, 1975	Doctor of Humanities
Robert Hugh Daniel	June 5, 1977	Doctor of Laws
William Paul Brann	June 5, 1977	Doctor of Laws
William Micajah Spencer, Jr.	June 5, 1977	Doctor of Humanities
George W. Campbell	June 5, 1977	Doctor of Laws
Julia Walker Russell	June 5, 1977	Doctor of Humane Letters
Henry Poellnitz Johnston	June 4, 1978	Doctor of Humanities
George Mooar Rust	June 4, 1978	Doctor of Science
Hall Williams Thompson	June 4, 1978	Doctor of Laws
John W. Kirklin	June 4, 1978	Doctor of Science
Margaret Spain McDonald	June 4, 1978	Doctor of Humanities
Samuel Booth Barker	June 3, 1979	Doctor of Science
Emil Carl Hess	June 3, 1979	Doctor of Humanities
William Hansell Hulsey	June 3, 1979	Doctor of Humanities
Kenneth Rule Daniel	June 8, 1980	Doctor of Science
William James Rushton	June 8, 1980	Doctor of Laws
Frank Park Samford	June 8, 1980	Doctor of Laws
Emmett Bryan Carmichael	June 7, 1981	Doctor of Science
Frederick W. Conner	June 7, 1981	Doctor of Humanities
Robert M. Frank	June 7, 1981	Doctor of Science
John S. Jemison, Jr.	June 7, 1981	Doctor of Laws
Howard Lamar Holley	June 6, 1982	Doctor of Science
A. Edward Maumenee	June 6, 1982	Doctor of Science
John S. Shaw, Jr.	June 6, 1982	Doctor of Laws
Joseph McConnell Farley	June 5, 1983	Doctor of Laws
J. Garber Galbraith	June 5, 1983	Doctor of Science
Charles W. Ireland	June 5, 1983	Doctor of Laws
Fuller Earle Callaway, Jr.	June 3, 1984	Doctor of Science
Thomas Kermit Hearn, Jr.	June 3, 1984	Doctor of Humanities
James Coleman Lee, Jr.	June 3, 1984	Doctor of Laws
James Allen Pittman, Jr.	June 3, 1984	Doctor of Science
Leonard Robinson	June 3, 1984	Doctor of Science
Jack J. Dreyfus	June 2, 1985	Doctor of Laws
Frederick Chapman Robbins	June 2, 1985	Doctor of Laws

\*Honorary degrees conferred prior to 1970 were conferred at the University of Alabama, Tuscaloosa.

## HONORARY UAB DEGREES CONFERRED (CONTINUED)

<u>Name</u>	<u>Date Conferred*</u>	<u>Degree</u>
Henry C. Goodrich	June 8, 1986	Doctor of Laws
Jack Dobbs McSpadden	June 8, 1986	Doctor of Laws
William F. Edmonds	June 8, 1986	Doctor of Science
W. Houston Blount	June 7, 1987	Doctor of Laws
Crawford T. Johnson III	June 7, 1987	Doctor of Laws
Joseph S. Bruno	June 5, 1988	Doctor of Laws
Eugene C. Gwaltney	June 5, 1988	Doctor of Laws
Charles B. Webb, Jr.	June 5, 1988	Doctor of Laws
Glenn Ireland II	June 4, 1989	Doctor of Laws
William M. Spencer III	June 4, 1989	Doctor of Laws
Clifton R. Wharton, Jr.	June 4, 1989	Doctor of Humane Letters
Katharine Reynolds Ireland	June 3, 1990	Doctor of Humanities
Charles Caldwell Marks	June 3, 1990	Doctor of Laws
Louis J. Willie	June 3, 1990	Doctor of Laws
Wallace R. Bunn	June 2, 1991	Doctor of Laws
William R. Ireland	June 2, 1991	Doctor of Laws
Thomas E. Rast	June 2, 1991	Doctor of Laws
J. Claude Bennett	June 7, 1992	Doctor of Science
Virginia Van der Veer Hamilton	June 7, 1992	Doctor of Letters
Carolyn Reid-Wallace	June 7, 1992	Doctor of Humane Letters
Richard Arrington, Jr.	June 6, 1993	Doctor of Science
Arnold G. Diethelm	June 6, 1993	Doctor of Science
John R. Durant	June 6, 1993	Doctor of Science
H. Brandt Ayers	June 5, 1994	Doctor of Humane Letters
George D. Lundberg	June 5, 1994	Doctor of Science
Wallace D. Malone, Jr.	June 4, 1995	Doctor of Laws
James Rachels	June 4, 1995	Doctor of Humane Letters
Alys Robinson Stephens	June 4, 1995	Doctor of Humanities
Elmer B. Harris	June 2, 1996	Doctor of Laws
Stevie Wonder	June 2, 1996	Doctor of Music
John W. Woods	June 2, 1996	Doctor of Laws
Don Logan	June 8, 1997	Doctor of Humane Letters
Sam C. Pointer, Jr.	June 8, 1997	Doctor of Laws
James H. Woodward	June 8, 1997	Doctor of Laws
Robert Luckie, Jr.	December 7, 1997	Doctor of Humanities
John J. McMahon, Jr.	June 7, 1998	Doctor of Laws
Eric F. Wieschaus	June 7, 1998	Doctor of Science
Lord Trevor Smith	December 6, 1998	Doctor of Humane Letters
Willie L. Brown, Jr.	June 6, 1999	Doctor of Humane Letters
H. Corbin Day	June 6, 1999	Doctor of Humane Letters
David Baltimore	December 5, 1999	Doctor of Science
William J. McDonough	December 5, 1999	Doctor of Humane Letters
David Satcher	June 4, 2000	Doctor of Science
Peter A. Georgescu	December 3, 2000	Doctor of Humane Letters
W. Richard West	June 10, 2001	Doctor of Laws
Regina M. Benjamin	December 15, 2001	Doctor of Science
Marie S. Ingalls	May 4, 2002	Doctor of Humanities
Michael E. Stephens	May 4, 2002	Doctor of Humanities
Annette Nevin Shelby	May 10, 2003	Doctor of Humanities
Alice E. Pigman	December 13, 2003	Doctor of Humanities

\*Honorary degrees conferred prior to 1970 were conferred at the University of Alabama, Tuscaloosa.

## **PRESIDENT'S MEDAL**

1985 - J. Durwood Bradley, M.D.  
1986 - B. Gene Bartow, Janet Redman Hill  
1987 - Peter Garthwaite Smith  
1988 - Max D. Cooper, M.D.  
1989 - James Hatcher  
1990 - Fred W. Sington  
1991 - Samuel Booth Barker, Ph.D  
1992 - Juan M. Navia, Ph.D  
1993 - Albert F. LoBuglio, M.D.  
1994 - Aaron L. Lamar, Jr., Ed. D.  
1995 - George N. Mickwee  
1996 - William A. Sibley, Ph.D.  
1997 - Linda Flaherty-Goldsmith  
1998 - Odessa Woolfolk  
1999 - James A. Garland  
2000 - Albert D. Pacifico, M.D.  
2001 - John N. Whitaker, M.D. (posthumously)  
2002 - Ada Long, Ph.D.  
2003 - Margaret M. Porter, Michael Goodrich, Julian W. Banton  
2004 - William J. Koopman, M.D.  
2005 - Rachel Z. Booth, Ph.D., John M. Lyons, Ph.D.

## **DISTINGUISHED ALUMNI AWARD**

1991 - Lawrence J. DeLucas, O.D., Ph.D.  
1992 - Richard M. Scrushy  
1993 - Helene Griffin Robertson  
1994 - William L. Roper, M.D., M.P.H.  
1995 - James H. Woodward, Ph.D.  
1996 - Kenneth L. Jackson  
1997 - Charles A. McCallum, D.M.D., M.D.  
1998 - Martha Warren Bidez, Ph.D.  
1999 - Jean A. Kelley, Ed.D.  
2000 - Robert C. Chapman  
2001 - Tommie G. Cummings  
2002 - Michael E. Stephens  
2003 - Gail H. Cassell, Ph.D.  
2004 – Marie L. O’Koren, Ed.D.



## UAB PROGRAM ACCREDITATION

<b><u>Programs Eligible for Accreditation</u></b>	<b><u>Year Program Started</u></b>	<b><u>Most Recent Accreditation</u></b>	<b><u>Accreditation Agency</u></b>
UAB	1969	2005	Southern Association of Colleges and Schools
GRADUATE SCHOOL	1970 (as UAB)		Member of Council of Graduate Schools in the United States
SCHOOL OF ARTS AND HUMANITIES			
Art	1972	2000	National Association of Schools of Art and Design
Music	1982	1997	National Association of Schools of Music
SCHOOL OF BUSINESS	1969	2002	Association to Advance Collegiate Schools of Business-International
Accounting			
Baccalaureate Level	1969	2002	Association to Advance Collegiate Schools of Business-International
Master's Level	1982	2002	
SCHOOL OF DENTISTRY	1948	2002	American Dental Association Commission on Accreditation (ADA)
All Specialty Programs:		2002	ADA Commission on Accreditation
Endodontics	1956	2002	
Maxillofacial Prosthodontics	1973	2002	
Oral and Maxillofacial Surgery	1949	1999	
Orthodontics	1952	2002	
Pediatric Dentistry	1951	2002	
Periodontics	1956	2002	
Prosthodontics	1955	2002	
General Practice Residency	1977	2002	ADA Commission on Accreditation
Advanced Educ. General Dentistry	1990	2002	ADA Commission on Accreditation
SCHOOL OF EDUCATION	1969	2000	National Council for Accreditation of Teacher Education
		2000	State Board of Education
Art Education	1972	2000	National Association of Schools of Art and Design
Music Education	1984	1997	National Association of Schools of Music
Rehabilitation Counseling	1980	2001	Council on Rehabilitation Education

## UAB PROGRAM ACCREDITATION (CONTINUED)

<b><u>Programs Eligible for Accreditation</u></b>	<b><u>Year Program Started</u></b>	<b><u>Most Recent Accreditation</u></b>	<b><u>Accreditation Agency</u></b>
SCHOOL OF ENGINEERING Baccalaureate Level	1969	2001	Accreditation Board for Engineering and Technology
SCHOOL OF HEALTH RELATED PROFESSIONS			
<u>Critical Care Department</u>			
Nurse Anesthesia	1946	2000	Council on Accreditation of Nurse Anesthesia Educational Programs
Respiratory Therapist	1973	2001	Committee on Accreditation for Respiratory Care, CAAHEP
Surgical Physician Assistant	1967	2004	Accreditation Review Commission on Education for the Physician Assistant
<u>Diagnostic and Therapeutic Sciences Department</u>			
Cytotechnology	1963	2004	Cytotechnology Programs Review Committee, American Society of Cytopathology, Commission on Accreditation of Allied Health Education Programs of the American Medical Association (CAAHEP)
Medical Technology	1945	2005	National Accrediting Agency for Clinical Laboratory Sciences
Nuclear Medicine Technology	1969	2003	Joint Review Committee on Educational Programs in NMT, Department of Education
Radiation Therapist	1982	1998	Joint Review Committee on Education in Radiologic Technology
Radiography	1944	2003	Joint Review Committee on Education in Radiologic Technology
<u>Health Services Administration Department</u>			
Health Administration	1965	2002	Commission on Accreditation of Healthcare Management Education (CAHME)
Health Information Management Baccalaureate Level	1972	2001	Council on Accreditation of the American Health Information Management Association, CAAHEP
<u>Nutrition Sciences Department</u>			
Dietetic Internship	1963	1998	American Dietetic Association

## UAB PROGRAM ACCREDITATION (CONTINUED)

<b><u>Programs Eligible for Accreditation</u></b>	<b><u>Year Program Started</u></b>	<b><u>Most Recent Accreditation</u></b>	<b><u>Accreditation Agency</u></b>
<u>Occupational Therapy Department</u> Occupational Therapy	1968	1997	Accreditation Committee of the American Occupational Therapy Association, CAAHEP
<u>Physical Therapy Department</u> Physical Therapy	1975	2000	Commission on Accreditation in Physical Therapy Education
UNIVERSITY OF ALABAMA SCHOOL OF MEDICINE	1945	1998	Liaison Committee on Medical Education
Including:			
School of Medicine - Birmingham			
School of Primary Medical Care - Huntsville			
College of Community Health Sciences - Tuscaloosa			
Division of Continuing Medical Education		2000	Accreditation Council for Continuing Medical Education
UAB University Hospital		2000	Joint Commission on Accreditation of Healthcare Organizations
		2003	Accreditation Council on Graduate Medical Education (ACGME)
Emergency Medical Technician	1974	2004	Committee on Accreditation of Education Programs for the EMS Professions (CAAHEP)
SCHOOL OF NATURAL SCIENCES AND MATHEMATICS			
Chemistry	1969	1999	American Chemical Society
SCHOOL OF NURSING	1950	2000	Commission on Collegiate Nursing Education
SCHOOL OF OPTOMETRY			
Professional Program (O.D.)	1969	2002	Accreditation Council on Optometric Education
Residency programs:			Accreditation Council on Optometric Education
Cornea and Contact Lenses	1980	2002	
Family Practice Optometry	1978	2003	
Geriatric Optometry and Low Vision Rehabilitation-Veterans Affairs	1982	1997	

## UAB PROGRAM ACCREDITATION (CONTINUED)

<b><u>Programs Eligible for Accreditation</u></b>	<b><u>Year Program Started</u></b>	<b><u>Most Recent Accreditation</u></b>	<b><u>Accreditation Agency</u></b>
Primary Eye Care-Veterans Affairs Ocular Disease	1979	1997	
Georgia	1983	2000	
Tennessee	1997	1999	
Pediatric Optometry	1986	2000	
SCHOOL OF PUBLIC HEALTH		2001	Council on Education for Public Health
M.P.H. Program	1966		
M.S.P.H. Program	1979		
Dr.P.H. Program	1979		
Ph.D. Program	1985		
M.P.H. (Industrial Hygiene)	1979	2004	Related Accreditation Commission, Accreditation Board of Engineering and Technology
SCHOOL OF SOCIAL AND BEHAVIORAL SCIENCES			
Medical Psychology	1980	2001	American Psychological Association
Public Administration (M.P.A.)	1978	2002	National Association of Schools of Public Affairs and Administration
Social Work	1976	2001	Council on Social Work Education

## UAB PROGRAM ACCREDITATION (CONTINUED)

### RESIDENCY AND SUBSPECIALTY TRAINING PROGRAMS AT UAB HOSPITAL ACCREDITED BY ACCREDITATION COUNCIL ON GRADUATE MEDICAL EDUCATION

<u>Department</u>	<u>Residency Program</u>	<u>Subspecialty Program</u>	<u>Most Recent Accreditation</u>
<b>Anesthesiology</b>	Anesthesiology		2004
		Critical Care Anesthesiology	2004
		Pain Management	2004
		Pediatric Anesthesiology	2002
<b>Dermatology</b>	Dermatology		2002
	Dermatology/Pathology	Dermatopathology	2001
<b>Emergency Medicine</b>	Emergency Medicine		2002
<b>Genetics</b>	Medical Genetics		2003
<b>Medicine</b>	Internal Medicine		1999
		Allergy and Immunology	2002
		Cardiovascular Disease	1999
		Clinical Cardiac Electrophysiology	1999
		Interventional Cardiology	2003
		Endocrinology, Diabetes, & Metabolism	2003
		Gastroenterology	1997
		Geriatric Medicine	1999
		Hematology/Oncology	1999
		Infectious Diseases	1997
		Nephrology	1997
		Pulmonary Disease/Critical Care Medicine	1997
		Rheumatology	1999
<b>Neurology</b>	Neurology		2000
		Child Neurology	2000
		Clinical Neurophysiology	2000
		Vascular Neurology	2004
<b>Obstetrics &amp; Gynecology</b>	Obstetrics & Gynecology		2003
<b>Ophthalmology</b>	Ophthalmology		2000
<b>Pathology</b>	Pathology		2003
		Blood Banking/Transfusion Medicine	2001
		Cytopathology	2003
		Dermopathology	Pending
		Forensic Pathology	2004
		Hematopathology	2002
		Molecular Genetic Pathology	2003
		Neuropathology	1999
<b>Pediatrics</b>	Pediatrics		2002
		Adolescent Medicine	2000
		Neonatal/Perinatal Medicine	2003
		Pediatric Critical Care Medicine	2002
		Pediatric Emergency Medicine	2002
		Pediatric Endocrinology	2000

## UAB PROGRAM ACCREDITATION (CONTINUED)

### RESIDENCY AND SUBSPECIALTY TRAINING PROGRAMS AT UAB HOSPITAL ACCREDITED BY ACCREDITATION COUNCIL ON GRADUATE MEDICAL EDUCATION

<u>Department</u>	<u>Residency Program</u>	<u>Subspecialty Program</u>	<u>Most Recent Accreditation</u>
Pediatrics (continued)		Pediatric Gastroenterology	2001
		Pediatric Hematology/Oncology	2003
		Pediatric Infectious Diseases	2002
		Pediatric Nephrology	2000
		Pediatric Pulmonology	2003
Physical Medicine & Rehabilitation	Physical Medicine & Rehabilitation		2003
		Spinal Cord Injury Medicine	2003
Psychiatry	Psychiatry		2003
		Child & Adolescent Psychiatry	2002
		Forensic Psychiatry	1999
		Geriatric Psychiatry	2003
Radiation Oncology	Radiation Oncology		2002
Radiology	Diagnostic Radiology		2003
		Neuroradiology	2003
		Vascular/Interventional Radiology	2003
		Nuclear Medicine	2001
Surgery	General Surgery		1999
		Pediatric Surgery	2001
		Plastic Surgery	2003
		Surgical Critical Care	2003
		Thoracic & Cardiovascular Surgery	2002
		Vascular Surgery	2002
	Neurosurgery		2002
	Orthopaedic Surgery		2004
	Hand Surgery		2004
	Otolaryngology		2003
	Urology		2003
<b>OTHER CAMPUSES</b>			
	Family Practice (Huntsville)		2002
		Sports Medicine (Huntsville)	2002
	Family Practice (Selma)		2003
	Family Practice (Tuscaloosa)		2001
	Internal Medicine (Montgomery)		2004



## UAB UNIVERSITY HOSPITAL STATISTICAL HIGHLIGHTS

<b>Discharges by Patient Origin<sup>1,2,3</sup></b>	<b>2002-03</b>	<b>Percent of Total</b>	<b>2003-04</b>	<b>Percent of Total</b>
Jefferson County	17,510	42%	18,701	43%
Other Alabama Counties	20,429	49%	20,875	48%
Out of State	3,752	9%	3,914	9%

<b>Patient Information<sup>1,2,3</sup></b>	<b>2002-03</b>	<b>2003-04</b>
Discharges <sup>1,2,3</sup>	41,691	43,490
Babies Delivered <sup>3</sup>	2,782	3,187
Total Inpatient Days of Care (Discharge Days) <sup>1,2,3</sup>	249,631	264,031
Emergency Department Visits <sup>3</sup>	45,000	45,795
Daily Average Number of Patients <sup>1,2,3</sup>	684	723
Average Length of Patient Stay <sup>1,2,3</sup>	5.99 days	6.07 days
Average Percentage of Occupancy <sup>1,2,3</sup>	81.5%	84.7%
Average Beds in Service <sup>4</sup>	839	854
Beds in Service, End-of-Year	850	855

### **Financial Information**

Salaries and Benefits	\$278,065,000	\$296,916,000
Total Expenses <sup>5</sup>	\$685,682,000	\$744,390,000
Average Daily Expenses	\$1,879,000	\$2,034,000

<sup>1</sup> Excludes normal newborns (newborns who are discharged with the mother).

<sup>2</sup> Includes 1,416 cases and 1,599 days in FY 2003, and 1,429 cases and 1,611 days in FY 2004 for outpatients with lengths of stay of 24 hours or greater.

<sup>3</sup> Data reported in UAB factbooks prior to FY 2002 varies from currently reported data due to consolidation of and refinements to the data sources made during FY 2002.

<sup>4</sup> The UAB University Hospital is currently licensed for 908 beds.

<sup>5</sup> Includes transfers for depreciation and interest.

Source: UAB University Hospital Financial Management

# **UAB LIBRARY STATISTICS** **FALL 2004**

	<u>Mervyn H. Sterne Library</u>	<u>Lister Hill Library of the Health Sciences*</u>
Volumes	1,474,379	375,375
Titles	822,325	107,843
Current Periodical Subscriptions	1,789	1,504
Archival Collections		
University Records Series	NA	212
Manuscript Collections	NA	111
Employees (Full-time Equivalents)		
Professional	19.2	18.0
Technical/Clerical	41.5	31.5
Student Assistants	13.5	5.0
Total Employees	74.2	54.5
Total Library Operating Expenditures	\$6,077,674	\$5,352,573
Library Physical Facilities		
Net Assignable Area (square feet)	154,000	87,567
Shelving Capacity (linear feet)	152,758	71,834 **
Seating Capacity	1,000	577
Total Hours Open per Week	86 (7-day period)	94.5 (7-day period)
Classification System	Library of Congress	National Library of Medicine; Library of Congress (nonmedical)

\*Includes Reynolds Historical Library and the UAB Archives.

\*\*Includes shelving at West Pavilion Library (LHL satellite) at UAB University Hospital.

Source: Library Directors

# GENERAL INFORMATION



# STUDENT INFORMATION



**UAB FALL SEMESTER 2004 ENROLLMENT  
BY SCHOOL AND LEVEL**

<b>School</b>	<b>Under-graduate</b>	<b>Graduate</b>	<b>First Profes-sional</b>	<b>Total for Reporting<sup>1</sup></b>	<b>Advanced Profes-sional<sup>2</sup></b>	<b>Total incl. Adv. Prof.</b>
Arts and Humanities	1,245	70		1,315		1,315
Business <sup>3</sup>	1,714	354		2,068		2,068
Dentistry	24	4	228	256	90	346
Education	789	926		1,715		1,715
Engineering	644	280		924		924
Health Related Professions <sup>3</sup>	942	600		1,542		1,542
Joint Health Sciences		426		426		426
Medicine	1		590	591	945	1,536
Natural Sciences and Mathematics	1,577	212		1,789		1,789
Nursing	288	281		569		569
Optometry		26	159	185	12	197
Public Health		345		345		345
Social and Behavioral Sciences	1,779	206		1,985		1,985
Unclassified <sup>4</sup>	2,438	545		2,983		2,983
<b>TOTAL</b>	<b>11,441</b>	<b>4,275</b>	<b>977</b>	<b>16,693</b>	<b>1,047</b>	<b>17,740</b>

<sup>1</sup>This total is reported to state and federal agencies and is included in documents such as surveys and questionnaires.

<sup>2</sup>Advanced Professionals are interns, residents, and postdoctoral fellows in the basic medical sciences plus students in postgraduate programs in dentistry and optometry.

<sup>3</sup>Included in the School of Health Related Professions graduate count are 32 students enrolled in the Administration Health Services program offered jointly by the School of Business and the School of Health Related Professions.

<sup>4</sup>Unclassified includes undergraduate students in General Studies and nondegree graduate students.

Source: UAB Headcount Enrollment Report, Fall Semester 2004

**UAB FALL SEMESTER 2004 ENROLLMENT  
FULL-TIME AND PART-TIME BY RACE AND GENDER**

	<b>Non-Resident Alien</b>		<b>Black</b>		<b>American Indian</b>		<b>Asian or Pacific Islander</b>		<b>Hispanic</b>		<b>White</b>		<b>Unknown</b>		<b>Total Male</b>	<b>Total Female</b>	<b>Total</b>
	<b>Male</b>	<b>Female</b>	<b>Male</b>	<b>Female</b>	<b>Male</b>	<b>Female</b>	<b>Male</b>	<b>Female</b>	<b>Male</b>	<b>Female</b>	<b>Male</b>	<b>Female</b>	<b>Male</b>	<b>Female</b>			
<b>FULL-TIME STUDENTS</b>																	
Undergraduate	151	124	763	1,929	12	15	117	168	35	47	1,948	2,532	59	95	3,085	4,910	7,995
Graduate	333	211	53	212	3	6	27	43	10	14	483	812	8	13	917	1,311	2,228
First Professional	3	0	20	45	4	3	49	53	4	5	459	328	4	0	543	434	977
<b>TOTAL FULL-TIME</b>	<b>487</b>	<b>335</b>	<b>836</b>	<b>2,186</b>	<b>19</b>	<b>24</b>	<b>193</b>	<b>264</b>	<b>49</b>	<b>66</b>	<b>2,890</b>	<b>3,672</b>	<b>71</b>	<b>108</b>	<b>4,545</b>	<b>6,655</b>	<b>11,200</b>
<b>PART-TIME STUDENTS</b>																	
Undergraduate	34	30	270	720	7	10	36	46	15	28	1,029	1,133	38	50	1,429	2,017	3,446
Graduate	88	35	76	309	3	8	22	25	6	17	468	966	9	15	672	1,375	2,047
First Professional	0	0	0	0	0	0	0	0	0	0	0	0	0	0	0	0	0
<b>TOTAL PART-TIME</b>	<b>122</b>	<b>65</b>	<b>346</b>	<b>1,029</b>	<b>10</b>	<b>18</b>	<b>58</b>	<b>71</b>	<b>21</b>	<b>45</b>	<b>1,497</b>	<b>2,099</b>	<b>47</b>	<b>65</b>	<b>2,101</b>	<b>3,392</b>	<b>5,493</b>
<b>TOTAL FULL-TIME AND PART-TIME STUDENTS</b>																	
Undergraduate	185	154	1,033	2,649	19	25	153	214	50	75	2,977	3,665	97	145	4,514	6,927	11,441
Graduate	421	246	129	521	6	14	49	68	16	31	951	1,778	17	28	1,589	2,686	4,275
First Professional	3	0	20	45	4	3	49	53	4	5	459	328	4	0	543	434	977
<b>GRAND TOTAL</b>	<b>609</b>	<b>400</b>	<b>1,182</b>	<b>3,215</b>	<b>29</b>	<b>42</b>	<b>251</b>	<b>335</b>	<b>70</b>	<b>111</b>	<b>4,387</b>	<b>5,771</b>	<b>118</b>	<b>173</b>	<b>6,646</b>	<b>10,047</b>	<b>16,693</b>

Total does not include 1,047 full-time advanced professionals.

Source: Institutional Studies and Services, Fall 2004 Compliance Report



**UAB UNDERGRADUATE STUDENT DEMOGRAPHICS  
FALL 2004**

		Full-time		Part-time		Total	
		Number	Percent	Number	Percent	Number	Percent
<b>Total</b>		7,995	69.9%	3,446	30.1%	11,441	100.0%
<b>Gender</b>	Female	4,910	42.9%	2,017	17.6%	6,927	60.5%
	Male	3,085	27.0%	1,429	12.5%	4,514	39.5%
<b>Race</b>	White	4,480	39.2%	2,162	18.9%	6,642	58.1%
	Black	2,692	23.5%	990	8.7%	3,682	32.2%
	Other Minority	394	3.4%	142	1.2%	536	4.7%
	Non-Resident Aliens	275	2.4%	64	0.6%	339	3.0%
	Not Reported	154	1.3%	88	0.8%	242	2.1%
<b>Class</b>	Freshman	2,581	22.6%	339	3.0%	2,920	25.5%
	Sophomore	1,613	14.1%	490	4.3%	2,103	18.4%
	Junior	1,597	14.0%	732	6.4%	2,329	20.4%
	Senior	2,064	18.0%	1,438	12.6%	3,502	30.6%
	Post Baccalaureate	26	0.2%	197	1.7%	223	1.9%
	Other Undergraduate	114	1.0%	250	2.2%	364	3.2%
<b>Age</b>	Under 19	1,015	8.9%	42	0.4%	1,057	9.2%
	19-21	3,871	33.8%	465	4.1%	4,336	37.9%
	22-25	2,086	18.2%	1,135	9.9%	3,221	28.2%
	26-30	519	4.5%	730	6.4%	1,249	10.9%
	31-35	204	1.8%	442	3.9%	646	5.6%
	Over 35	300	2.6%	632	5.5%	932	8.1%
	Average Age	21.9		28.8		24.0	
<b>Permanent Residence</b>	Jefferson County	3,351	29.3%	2,138	18.7%	5,489	48.0%
	Other Metro Area Counties*	938	8.2%	596	5.2%	1,534	13.4%
	Other AL Counties	2,856	25.0%	561	4.9%	3,417	29.9%
	Other States	573	5.0%	87	0.8%	660	5.8%
	Other Countries	275	2.4%	64	0.6%	339	3.0%
	Unknown	2	0.0%	0	0.0%	2	0.0%
<b>School/Unit</b>	Arts & Humanities	829	7.2%	416	3.6%	1,245	10.9%
	Business	1,064	9.3%	650	5.7%	1,714	15.0%
	Dentistry	24	0.2%	0	0.0%	24	0.2%
	Education	542	4.7%	247	2.2%	789	6.9%
	Engineering	496	4.3%	148	1.3%	644	5.6%
	Health Related Professions	735	6.4%	207	1.8%	942	8.2%
	Medicine	0	0.0%	1	0.0%	1	0.0%
	Natural Sciences & Math	1,183	10.3%	394	3.4%	1,577	13.8%
	Nursing	242	2.1%	46	0.4%	288	2.5%
	Social & Behav Sciences	1,251	10.9%	528	4.6%	1,779	15.5%
	Unclassified	1,629	14.2%	809	7.1%	2,438	21.3%

\*Blount, Shelby, St. Clair, and Walker Counties

Source: Institutional Studies and Services

**UAB ENTERING FRESHMAN DEMOGRAPHICS  
FALL 2004**

		Full-time		Part-time		Total	
		Number	Percent	Number	Percent	Number	Percent
<b>Total</b>		1,543	94.8%	85	5.2%	1,628	100.0%
<b>Gender</b>	Female	976	63.3%	47	55.3%	1,023	62.8%
	Male	567	36.7%	38	44.7%	605	37.2%
<b>Race</b>	White	848	55.0%	46	54.1%	894	54.9%
	Black	560	36.3%	30	35.3%	590	36.2%
	Other Minority	79	5.1%	4	4.7%	83	5.1%
	Non-Resident Aliens	29	1.9%	2	2.4%	31	1.9%
	Not Reported	27	1.7%	3	3.5%	30	1.8%
<b>Age</b>	Under 19	988	64.0%	26	30.6%	1,014	62.3%
	19-21	499	32.3%	27	31.8%	526	32.3%
	22-25	39	2.5%	14	16.5%	53	3.3%
	26-30	7	0.5%	4	4.7%	11	0.7%
	31-35	2	0.1%	7	8.2%	9	0.6%
	Over 35	6	0.4%	7	8.2%	13	0.8%
	Unknown	2	0.1%	0	0.0%	2	0.1%
	Average Age	18.6		23.1		18.9	
<b>Permanent Residence</b>	Jefferson County	582	37.7%	57	67.1%	639	39.3%
	Other Metro Area Counties*	148	9.6%	13	15.3%	161	9.9%
	Other Alabama Counties	663	43.0%	11	12.9%	674	41.4%
	Other States	121	7.8%	2	2.4%	123	7.6%
	Other Countries	29	1.9%	2	2.4%	31	1.9%
<b>School/Unit</b>	Arts & Humanities	93	6.0%	5	5.9%	98	6.0%
	Business	129	8.4%	21	24.7%	150	9.2%
	Dentistry	2	0.1%	0	0.0%	2	0.1%
	Education	52	3.4%	4	4.7%	56	3.4%
	Engineering	133	8.6%	7	8.2%	140	8.6%
	Health Related Professions	148	9.6%	6	7.1%	154	9.5%
	Natural Sciences & Math	293	19.0%	7	8.2%	300	18.4%
	Social & Behav Sciences	152	9.9%	7	8.2%	159	9.8%
	Unclassified (General Studies)	541	35.1%	28	32.9%	569	35.0%

Conditionally Admitted 416 (26% of class)  
Mean ACT 22.52  
Mean High School GPA 3.30

Top Feeder High Schools: Hoover HS (55); Clay-Chalkville HS (41); Hewitt-Trussville HS (39); John Carroll Catholic HS (31); Bob Jones HS (30); Homewood HS (28); Alabama HS for Science and Mathematics (27); Shades Valley HS (26); Vestavia Hills HS (25); Spain Park HS (25); Pleasant Grove HS (24); Mortimer Jordan HS (21); Pinson Valley HS (21); Oak Mountain HS (20); Ramsay HS (20); John L. LeFlore HS (19); Gardendale HS (18); Thompson HS (17); Minor HS (17); Hueytown HS (16).

\*Blount, Shelby, St. Clair, and Walker counties  
Source: Institutional Studies and Services

**UAB GRADUATE STUDENT DEMOGRAPHICS**  
**Fall 2004**

		Full-time		Part-time		Total	
		Number	Percent	Number	Percent	Number	Percent
<b>Total</b>		2,228	52.1%	2,047	47.9%	4,275	100.0%
<b>Gender</b>	Female	1,311	30.7%	1,375	32.2%	2,686	62.8%
	Male	917	21.5%	672	15.7%	1,589	37.2%
<b>Race</b>	White	1,295	30.3%	1,434	33.5%	2,729	63.8%
	Black	265	6.2%	385	9.0%	650	15.2%
	Other Minority	103	2.4%	81	1.9%	184	4.3%
	Non-Resident Aliens	544	12.7%	123	2.9%	667	15.6%
	Not Reported	21	0.5%	24	0.6%	45	1.1%
<b>Class</b>	Masters	1,293	30.2%	1,175	27.5%	2,468	57.7%
	Post Masters	21	0.5%	117	2.7%	138	3.2%
	Doctoral	850	19.9%	215	5.0%	1,065	24.9%
	Post Doctoral	0	0.0%	1	0.0%	1	0.0%
	Non-Degree Graduate	64	1.5%	539	12.6%	603	14.1%
<b>Age</b>	Under 19	0	0.0%	0	0.0%	0	0.0%
	19-21	17	0.4%	0	0.0%	17	0.4%
	22-25	779	18.2%	363	8.5%	1,142	26.7%
	26-30	784	18.3%	594	13.9%	1,378	32.2%
	31-35	314	7.3%	359	8.4%	673	15.7%
	Over 35	331	7.7%	727	17.0%	1,058	24.7%
	Unknown	3	0.1%	4	0.1%	7	0.2%
	Average Age	29.2		34.1		31.5	
<b>Permanent Residence</b>	Jefferson County	591	13.8%	1,125	26.3%	1,716	40.1%
	Other Metro Area Counties*	201	4.7%	331	7.7%	532	12.4%
	Other AL Counties	404	9.5%	337	7.9%	741	17.3%
	Other States	488	11.4%	131	3.1%	619	14.5%
	Other Countries	544	12.7%	123	2.9%	667	15.6%
	Unknown	0	0.0%	0	0.0%	0	0.0%
<b>School/Unit</b>	Arts & Humanities	21	0.5%	49	1.1%	70	1.6%
	Business	125	2.9%	229	5.4%	354	8.3%
	Dentistry	0	0.0%	4	0.1%	4	0.1%
	Education	271	6.3%	655	15.3%	926	21.7%
	Engineering	167	3.9%	113	2.6%	280	6.5%
	Health-Related Professions	518	12.1%	82	1.9%	600	14.0%
	Joint Health Sciences	412	9.6%	14	0.3%	426	10.0%
	Natural Sciences & Math	167	3.9%	45	1.1%	212	5.0%
	Nursing	77	1.8%	204	4.8%	281	6.6%
	Optometry	19	0.4%	7	0.2%	26	0.6%
	Public Health	253	5.9%	92	2.2%	345	8.1%
	Social & Behav Sciences	136	3.2%	70	1.6%	206	4.8%
	Unclassified	62	1.5%	483	11.3%	545	12.7%

\*Blount, Shelby, St. Clair, and Walker counties

Source: Institutional Studies and Services

**UAB FIRST PROFESSIONAL STUDENT DEMOGRAPHICS\***  
**FALL 2004**

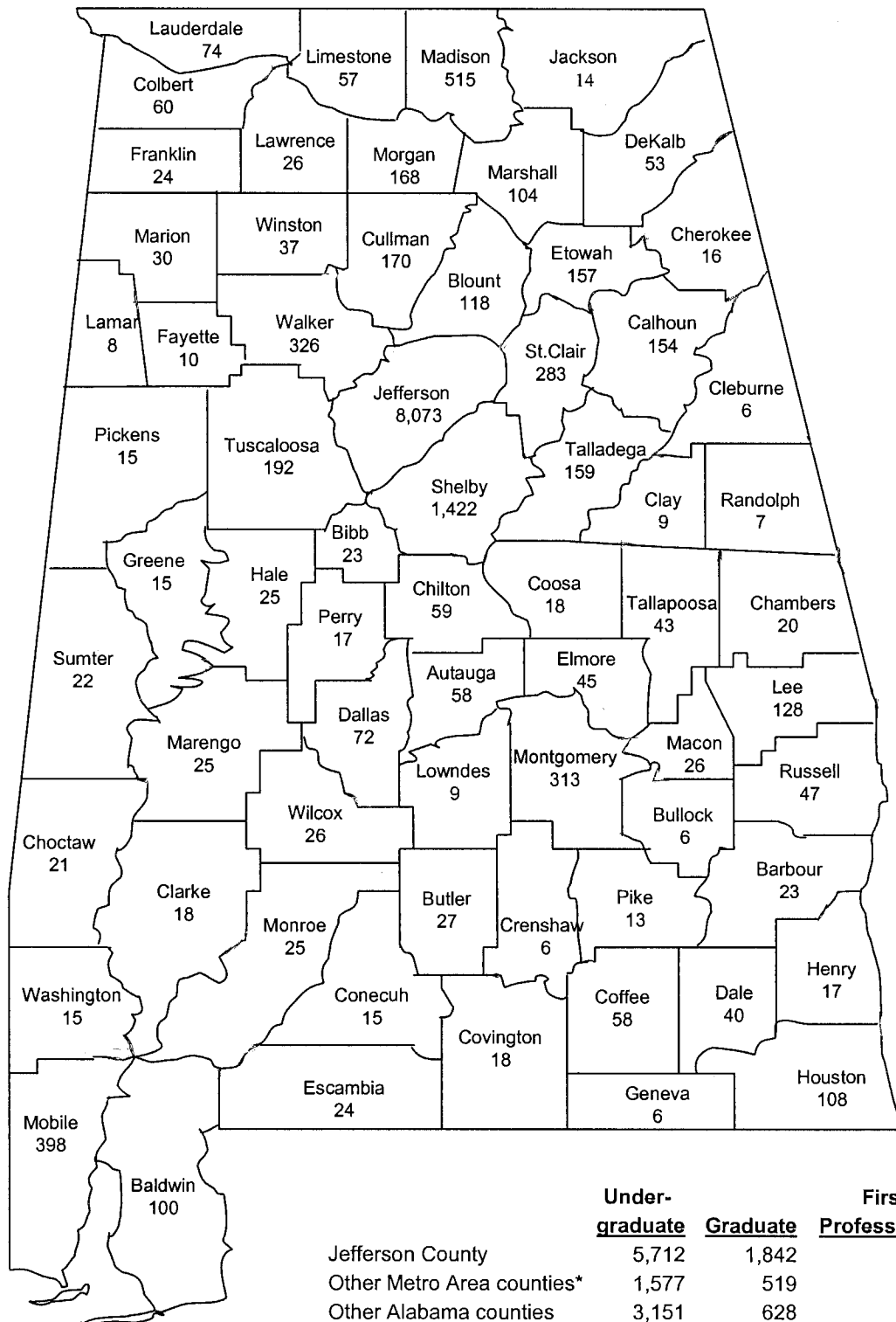
		Full-time		Part-time		Total	
		Number	Percent	Number	Percent	Number	Percent
<b>Total</b>		977	100.0%	0	0.0%	977	100.0%
<b>Gender</b>	Female	434	44.4%	0	0.0%	434	44.4%
	Male	543	55.6%	0	0.0%	543	55.6%
<b>Race</b>	White	787	80.6%	0	0.0%	787	80.6%
	Black	65	6.7%	0	0.0%	65	6.7%
	Other Minority	118	12.1%	0	0.0%	118	12.1%
	Non-Resident Aliens	3	0.3%	0	0.0%	3	0.3%
	Not Reported	4	0.4%	0	0.0%	4	0.4%
<b>Class</b>	First Year	264	27.0%	0	0.0%	264	27.0%
	Second Year	252	25.8%	0	0.0%	252	25.8%
	Third Year	231	23.6%	0	0.0%	231	23.6%
	Fourth Year	230	23.5%	0	0.0%	230	23.5%
<b>Age</b>	Under 19	0	0.0%	0	0.0%	0	0.0%
	19-21	8	0.8%	0	0.0%	8	0.8%
	22-25	644	65.9%	0	0.0%	644	65.9%
	26-30	264	27.0%	0	0.0%	264	27.0%
	31-35	46	4.7%	0	0.0%	46	4.7%
	Over 35	15	1.5%	0	0.0%	15	1.5%
	Average Age	25.2		NA		25.2	
<b>Permanent Residence</b>	Jefferson County	219	22.4%	0	0.0%	219	22.4%
	Other Metro Area Counties**	46	4.7%	0	0.0%	46	4.7%
	Other AL Counties	522	53.4%	0	0.0%	522	53.4%
	Other States	187	19.1%	0	0.0%	187	19.1%
	Other Countries	3	0.3%	0	0.0%	3	0.3%
<b>School/Unit</b>	Dentistry (D.M.D.)	228	23.3%	0	0.0%	228	23.3%
	Medicine (M.D.)	590	60.4%	0	0.0%	590	60.4%
	Optometry (O.D.)	159	16.3%	0	0.0%	159	16.3%

\*Does not include 1,047 full-time Advanced Professionals.

\*\*Blount, Shelby, St. Clair, and Walker counties

Source: Institutional Studies and Services

## UAB STUDENTS BY SOURCE, FALL 2004



	Under-graduate	Graduate	First Professional	Total
Jefferson County	5,712	1,842	519	8,073
Other Metro Area counties*	1,577	519	53	2,149
Other Alabama counties	3,151	628	215	3,994
Out-of-State	662	619	187	1,468
Out-of-Country	339	667	3	1,009
TOTAL	11,441	4,275	977	16,693

\*Totals do not include 1,047 advanced professionals.

\*\*Blount, Shelby, St. Clair, and Walker counties.

### UAB FALL ENROLLMENT BY SCHOOL 1998-2004

	<u>1998</u>	<u>1999</u>	<u>2000</u>	<u>2001</u>	<u>2002</u>	<u>2003</u>	<u>2004</u>
Arts and Humanities	832	926	983	1,068	1,126	1,231	1,315
Business	2,005	1,963	2,016	2,012	2,231	2,183	2,068
Dentistry*	311	314	333	325	340	334	346
Education	1,764	1,687	1,664	1,563	1,607	1,683	1,715
Engineering	684	722	744	737	777	849	924
Health Related Professions	835	825	821	870	1,192	1,377	1,542
Joint Health Sciences	348	364	358	347	364	397	426
Medicine*	1,548	1,549	1,501	1,486	1,445	1,498	1,536
Natural Sciences and Mathematics	1,215	1,135	1,655	1,597	1,602	1,661	1,789
Nursing	561	519	456	445	467	547	569
Optometry*	184	194	193	193	203	193	197
Public Health	384	363	335	348	391	342	345
Social and Behavioral Sciences	1,744	1,852	1,890	1,847	1,950	1,936	1,985
Unclassified	<u>3,601</u>	<u>3,668</u>	<u>2,972</u>	<u>2,838</u>	<u>2,821</u>	<u>3,114</u>	<u>2,983</u>
 TOTAL	 16,016	 16,081	 15,921	 15,676	 16,516	 17,345	 17,740

\*Includes advanced professionals.

Source: UAB Headcount Enrollment Reports, 1998-2004

### UAB FALL ENROLLMENT BY CLASS 1998-2004

	<u>1998</u>	<u>1999</u>	<u>2000</u>	<u>2001</u>	<u>2002</u>	<u>2003</u>	<u>2004</u>
Entering Freshmen	1,175	1,233	1,314	1,301	1,471	1,708	1,628
Other Freshmen	1,094	1,080	1,116	1,081	1,093	1,152	1,292
Sophomores	1,837	1,748	1,705	1,722	1,940	1,972	2,103
Juniors	2,144	2,178	2,049	1,990	2,067	2,199	2,329
Seniors	3,312	3,293	3,298	3,089	3,143	3,350	3,502
Other Undergraduates	871	888	849	771	787	665	587
Master's	2,139	2,008	2,095	2,224	2,461	2,546	2,468
Postmaster's	97	83	102	131	129	125	138
Doctoral	854	901	876	853	882	955	1,065
Postdoctoral	0	1	3	7	2	10	1
Nondegree Graduates	531	681	565	551	622	689	603
First Professionals	1,002	1,004	979	975	982	986	977
Advanced Professionals	<u>960</u>	<u>983</u>	<u>970</u>	<u>981</u>	<u>937</u>	<u>988</u>	<u>1,047</u>
 TOTAL	 16,016	 16,081	 15,921	 15,676	 16,516	 17,345	 17,740

Source: Institutional Studies and Services

## UAB FALL ENROLLMENT BY STUDENT LEVEL 1969-2004

	<u>Para- professional<sup>1</sup></u>	<u>Under- graduate</u>	<u>Graduate</u>	<u>First Professional</u>	<u>Total for Reporting</u>	<u>Advanced Professional<sup>2</sup></u>	<u>Total</u>
1969	88	3,881	564	560	5,093	288	5,381
1970	154	5,001	745	603	6,503	280	6,783
1971	222	5,320	881	674	7,097	342	7,439
1972	232	6,233	1,272	749	8,486	482	8,968
1973	283	6,547	1,379	819	9,028	443	9,471
1974	435	6,821	1,849	778	9,883	461	10,344
1975	512	8,123	2,226	780	11,641	478	12,119
1976	512	8,471	2,192	867	12,042	497	12,539
1977	538	8,622	2,422	958	12,540	582	13,122
1978	624	9,004	2,528	1,071	13,227	572	13,799
1979	565	9,229	2,757	1,070	13,621	593	14,214
1980	484	9,618	2,684	1,068	13,854	594	14,448
1981	523	9,790	2,537	1,017	13,867	607	14,474
1982	498	10,170	2,280	946	13,894	636	14,530
1983	489	10,426	2,165	916	13,996	683	14,679
1984	482	9,914	2,228	893	13,517	683	14,200
1985	386	9,773	2,445	907	13,511	690	14,201
1986	376	9,594	2,675	893	13,538	710	14,248
1987	321	9,543	2,739	876	13,479	766	14,245
1988	334	9,723	2,939	890	13,886	769	14,655
1989	365	10,251	3,154	922	14,692	816	15,508
1990	397	10,688	3,335	936	15,356	930	16,286
1991	439	11,313	3,244	926	15,922	862	16,784
1992	442	11,234	3,126	940	15,742	916	16,658
1993 <sup>3</sup>	472	11,186	3,290	965	15,913	875	16,788
1994	137	10,668	3,571	986	15,362	890	16,252
1995	0	10,747	3,746	1,009	15,502	950	16,452
1996	0	10,692	3,595	987	15,274	891	16,165
1997	0	10,358	3,586	989	14,933	917	15,850
1998	0	10,433	3,621	1,002	15,056	960	16,016
1999	0	10,420	3,674	1,004	15,098	983	16,081
2000	0	10,331	3,641	979	14,951	970	15,921
2001	0	9,954	3,766	975	14,695	981	15,676
2002	0	10,501	4,096	982	15,579	937	16,516
2003	0	11,046	4,325	986	16,357	988	17,345
2004	0	11,441	4,275	977	16,693	1,047	17,740

NOTE: "Total for Reporting" is the total reported to state and federal agencies and included in documents such as surveys and questionnaires.

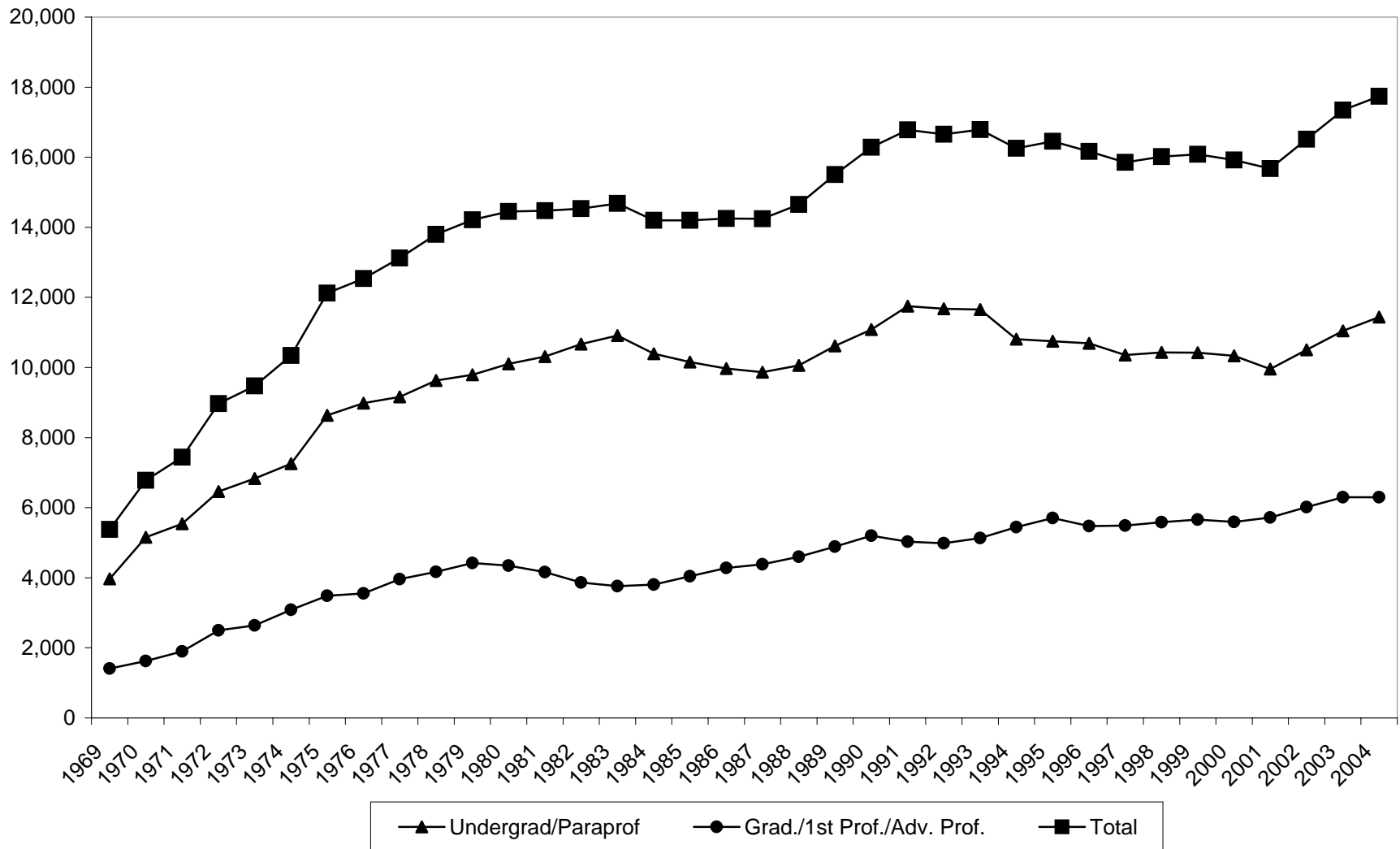
<sup>1</sup>The certificate programs in Health Related Professions were phased out beginning in 1994. Dental Assisting and Dental Lab Tech were eliminated in 1995; Dental Assisting was reinstated in Fall 2000. Students in the certificate programs in EMT and reinstated Dental Assisting are included with undergraduates.

<sup>2</sup>Advanced Professionals are interns, residents, and postdoctoral fellows in the basic medical sciences plus students in postgraduate programs in dentistry and optometry.

<sup>3</sup>Beginning in 1993, students taking classes off campus are included in the headcount enrollment.

Source: UAB Headcount Enrollment Reports 1969-2004

## UAB FALL HEADCOUNT ENROLLMENT 1969-2004



Note: Beginning in Fall 1993, figures include students enrolled off campus.



**UAB FALL ENROLLMENT  
FULL-TIME AND PART-TIME BY GENDER  
1983-2004**

<u>Year</u>	<u>Full-time</u>		<u>Part-time</u>		<u>Total</u>		<u>Percent Part-time</u>
	<u>Men</u>	<u>Women</u>	<u>Men</u>	<u>Women</u>	<u>Men</u>	<u>Women</u>	
1983	3,926	4,380	2,571	3,119	6,497	7,499	41%
1984	3,667	4,177	2,604	3,069	6,271	7,246	42%
1985	3,603	4,124	2,594	3,190	6,197	7,314	43%
1986	3,693	4,082	2,514	3,249	6,207	7,331	43%
1987	3,666	4,220	2,439	3,154	6,105	7,374	41%
1988	3,786	4,329	2,492	3,279	6,278	7,608	42%
1989	3,930	4,521	2,650	3,591	6,580	8,112	42%
1990	4,187	4,813	2,677	3,679	6,864	8,492	41%
1991	4,390	5,023	2,759	3,750	7,149	8,773	41%
1992	4,418	5,091	2,699	3,534	7,117	8,625	40%
1993 *	4,560	5,201	2,678	3,474	7,238	8,675	39%
1994	4,460	5,146	2,486	3,270	6,946	8,416	37%
1995	4,538	5,334	2,367	3,263	6,905	8,597	36%
1996	4,464	5,467	2,275	3,068	6,739	8,535	35%
1997	4,561	5,385	2,109	2,878	6,670	8,263	33%
1998	4,412	5,657	2,065	2,922	6,477	8,579	33%
1999	4,419	5,778	1,977	2,924	6,396	8,702	32%
2000	4,472	5,920	1,805	2,754	6,277	8,674	30%
2001	4,145	5,515	2,010	3,025	6,155	8,540	34%
2002	4,398	5,908	2,064	3,209	6,462	9,117	34%
2003	4,574	6,340	2,061	3,382	6,635	9,722	33%
2004	4,545	6,655	2,101	3,392	6,646	10,047	33%

**UAB FALL ENROLLMENT BY STUDENT SOURCE  
2000-2004**

	<u>2000</u>	<u>2001</u>	<u>2002</u>	<u>2003</u>	<u>2004</u>
Jefferson County	7,362	7,131	7,477	7,502	8,073
Other Metro Area Counties**	1,963	1,850	1,948	2,037	2,149
Other Alabama Counties	3,599	3,563	3,865	4,406	3,994
Out-of-State	1,221	1,269	1,326	1,387	1,468
Out-of-Country	802	879	959	1,023	1,009
Unknown	<u>4</u>	<u>3</u>	<u>4</u>	<u>2</u>	<u>0</u>
TOTAL	14,951	14,695	15,579	16,357	16,693

Note: Totals do not include advanced professionals.

\*Beginning in 1993, students taking classes off campus are included in the headcount enrollment.

\*\*Blount, Shelby, St. Clair, and Walker counties.

Source: Institutional Studies and Services

## UAB FALL ENROLLMENT BY RACE AND LEVEL 1999-2004\*

<b>UNDERGRADUATE</b>	<b>Fall 1999</b>	<b>% of Total</b>	<b>Fall 2000</b>	<b>% of Total</b>	<b>Fall 2001</b>	<b>% of Total</b>	<b>Fall 2002</b>	<b>% of Total</b>	<b>Fall 2003</b>	<b>% of Total</b>	<b>Fall 2004</b>	<b>% of Total</b>
Non-resident Alien	334	3.2%	342	3.3%	335	3.4%	344	3.3%	378	3.4%	339	3.0%
Black Non-Hispanic	2,804	26.9%	2,956	28.6%	2,987	30.0%	3,179	30.3%	3,534	32.0%	3,682	32.2%
American Indian/Alaskan Native	29	0.3%	32	0.3%	34	0.3%	43	0.4%	53	0.5%	44	0.4%
Asian or Pacific Islander	278	2.7%	295	2.9%	303	3.0%	306	2.9%	334	3.0%	367	3.2%
Hispanic	79	0.8%	104	1.0%	98	1.0%	109	1.0%	125	1.1%	125	1.1%
White Non-Hispanic	6,649	63.8%	6,327	61.2%	5,934	59.6%	6,262	59.6%	6,368	57.6%	6,642	58.1%
Race/Ethnicity Unknown	247	2.4%	275	2.7%	263	2.6%	258	2.5%	254	2.3%	242	2.1%
<b>Total</b>	<b>10,420</b>	<b>100.0%</b>	<b>10,331</b>	<b>100.0%</b>	<b>9,954</b>	<b>100.0%</b>	<b>10,501</b>	<b>100.0%</b>	<b>11,046</b>	<b>100.0%</b>	<b>11,441</b>	<b>100.0%</b>
<b>GRADUATE</b>	<b>Fall 1999</b>	<b>% of Total</b>	<b>Fall 2000</b>	<b>% of Total</b>	<b>Fall 2001</b>	<b>% of Total</b>	<b>Fall 2002</b>	<b>% of Total</b>	<b>Fall 2003</b>	<b>% of Total</b>	<b>Fall 2004</b>	<b>% of Total</b>
Non-resident Alien	403	11.0%	453	12.4%	538	14.3%	608	14.8%	638	14.8%	667	15.6%
Black Non-Hispanic	488	13.3%	514	14.1%	569	15.1%	650	15.9%	647	15.0%	650	15.2%
American Indian/Alaskan Native	11	0.3%	12	0.3%	15	0.4%	16	0.4%	12	0.3%	20	0.5%
Asian or Pacific Islander	88	2.4%	92	2.5%	104	2.8%	116	2.8%	123	2.8%	117	2.7%
Hispanic	31	0.8%	38	1.0%	31	0.8%	26	0.6%	38	0.9%	47	1.1%
White Non-Hispanic	2,580	70.2%	2,484	68.2%	2,456	65.2%	2,631	64.2%	2,809	64.9%	2,729	63.8%
Race/Ethnicity Unknown	73	2.0%	48	1.3%	53	1.4%	49	1.2%	58	1.3%	45	1.1%
<b>Total</b>	<b>3,674</b>	<b>100.0%</b>	<b>3,641</b>	<b>100.0%</b>	<b>3,766</b>	<b>100.0%</b>	<b>4,096</b>	<b>100.0%</b>	<b>4,325</b>	<b>100.0%</b>	<b>4,275</b>	<b>100.0%</b>
<b>FIRST PROFESSIONAL</b>	<b>Fall 1999</b>	<b>% of Total</b>	<b>Fall 2000</b>	<b>% of Total</b>	<b>Fall 2001</b>	<b>% of Total</b>	<b>Fall 2002</b>	<b>% of Total</b>	<b>Fall 2003</b>	<b>% of Total</b>	<b>Fall 2004</b>	<b>% of Total</b>
Non-resident Alien	7	0.7%	7	0.7%	6	0.6%	9	0.9%	7	0.7%	3	0.3%
Black Non-Hispanic	65	6.5%	63	6.4%	67	6.9%	63	6.4%	61	6.2%	65	6.7%
American Indian/Alaskan Native	10	1.0%	10	1.0%	10	1.0%	9	0.9%	7	0.7%	7	0.7%
Asian or Pacific Islander	105	10.5%	117	12.0%	117	12.0%	118	12.0%	116	11.8%	102	10.4%
Hispanic	14	1.4%	13	1.3%	12	1.2%	11	1.1%	7	0.7%	9	0.9%
White Non-Hispanic	803	80.0%	769	78.5%	757	77.6%	770	78.4%	784	79.5%	787	80.6%
Race/Ethnicity Unknown	-	0.0%	-	0.0%	6	0.6%	2	0.2%	4	0.4%	4	0.4%
<b>Total</b>	<b>1,004</b>	<b>100.0%</b>	<b>979</b>	<b>100.0%</b>	<b>975</b>	<b>100.0%</b>	<b>982</b>	<b>100.0%</b>	<b>986</b>	<b>100.0%</b>	<b>977</b>	<b>100.0%</b>
<b>UAB TOTAL</b>	<b>Fall 1999</b>	<b>% of Total</b>	<b>Fall 2000</b>	<b>% of Total</b>	<b>Fall 2001</b>	<b>% of Total</b>	<b>Fall 2002</b>	<b>% of Total</b>	<b>Fall 2003</b>	<b>% of Total</b>	<b>Fall 2004</b>	<b>% of Total</b>
Non-resident Alien	744	4.9%	802	5.4%	879	6.0%	961	6.2%	1,023	6.3%	1,009	6.0%
Black Non-Hispanic	3,357	22.2%	3,533	23.6%	3,623	24.7%	3,892	25.0%	4,242	25.9%	4,397	26.3%
American Indian/Alaskan Native	50	0.3%	54	0.4%	59	0.4%	68	0.4%	72	0.4%	71	0.4%
Asian or Pacific Islander	471	3.1%	504	3.4%	524	3.6%	540	3.5%	573	3.5%	586	3.5%
Hispanic	124	0.8%	155	1.0%	141	1.0%	146	0.9%	170	1.0%	181	1.1%
White Non-Hispanic	10,032	66.4%	9,580	64.1%	9,147	62.2%	9,663	62.0%	9,961	60.9%	10,158	60.9%
Race/Ethnicity Unknown	320	2.1%	323	2.2%	322	2.2%	309	2.0%	316	1.9%	291	1.7%
<b>Total</b>	<b>15,098</b>	<b>100.0%</b>	<b>14,951</b>	<b>100.0%</b>	<b>14,695</b>	<b>100.0%</b>	<b>15,579</b>	<b>100.0%</b>	<b>16,357</b>	<b>100.0%</b>	<b>16,693</b>	<b>100.0%</b>

\*Totals do not include advanced professionals.

Source: Institutional Studies and Services

## UAB CREDIT HOUR PRODUCTION FALL 2004

	<b>Lower Division Undergrad.<sup>1</sup></b>	<b>Upper Division Undergrad.<sup>2</sup></b>	<b>Graduate One<sup>3</sup></b>	<b>Graduate Two<sup>4</sup></b>	<b>Total</b>
Arts and Humanities	28,073	5,425	736	24	34,258
Business	5,265	9,334	2,925	97	17,621
Dentistry <sup>5</sup>	336				336
Education	1,515	4,477	6,849	209	13,050
Engineering	1,809	1,817	1,610	576	5,812
Health Related Professions	501	5,799	6,850	1,069	14,219
Joint Health Sciences			101	5,776	5,877
Medicine <sup>5</sup>	256	6			262
Natural Sciences and Mathematics	31,196	3,471	1,140	995	36,802
Nursing		3,508	1,563	189	5,260
Optometry (Vision Science) <sup>6</sup>			14	223	237
Public Health			3,246	743	3,989
Social and Behavioral Sciences	21,070	7,981	1,005	806	30,862
Graduate School				539	539
Provost's Office <sup>7</sup>	892				892
ROTC/Cooperative Education	340	84			424
<b>TOTAL</b>	<b>91,253</b>	<b>41,902</b>	<b>26,039</b>	<b>11,246</b>	<b>170,440</b>

<sup>1</sup>Includes courses numbered 095-299.

<sup>2</sup>Includes courses numbered 300-499.

<sup>3</sup>Includes courses numbered 500-699 except in Education, where courses numbered 700-739 are included.

<sup>4</sup>Includes courses numbered 700-799.

<sup>5</sup>Undergraduate credit hours in Medicine are generated by the EMT program and in Dentistry are generated by the Dental Assisting program. First professional programs in Medicine, Dentistry, and Optometry do not generate credit hours.

<sup>6</sup>Physiological Optics until Fall 2004.

<sup>7</sup>Includes interdisciplinary hours (UNIV) generated by instructors not affiliated with an academic unit.

Source: Institutional Studies and Services, ACHE Credit Hour Production Reports

**UAB ANNUAL CREDIT HOUR PRODUCTION BY SCHOOL**  
**1997-1998 through 2003-04**

	<u>1997-98</u>	<u>1998-99</u>	<u>1999-2000</u>	<u>2000-01</u>	<u>2001-02</u>	<u>2002-03</u>	<u>2003-04</u>
<b>ARTS AND HUMANITIES</b>							
Lower Division Undergraduate	50,789	51,930	52,629	52,500	50,625	54,399	58,570
Upper Division Undergraduate	8,131	8,667	10,436	12,140	11,158	11,974	12,173
Graduate 1	1,079	1,035	1,200	1,048	1,395	1,353	1,855
Graduate 2	<u>0</u>	<u>0</u>	<u>18</u>	<u>27</u>	<u>21</u>	<u>30</u>	<u>24</u>
Total	59,999	61,632	64,283	65,715	63,199	67,756	72,622
<b>BUSINESS</b>							
Lower Division Undergraduate	13,878	14,769	14,175	14,418	13,405	12,957	13,266
Upper Division Undergraduate	19,191	19,061	18,528	20,412	20,029	22,331	22,511
Graduate 1	8,490	7,203	6,885	7,662	7,611	8,376	7,944
Graduate 2	<u>211</u>	<u>219</u>	<u>189</u>	<u>197</u>	<u>207</u>	<u>171</u>	<u>173</u>
Total	41,770	41,252	39,777	42,689	41,252	43,835	43,894
<b>DENTISTRY (DAST PROGRAM)</b>							
Lower Division Undergraduate	<u>0</u>	<u>0</u>	<u>0</u>	<u>623</u>	<u>533</u>	<u>1,067</u>	<u>588</u>
Total	0	0	0	623	533	1,067	588
<b>EDUCATION</b>							
Lower Division Undergraduate	4,609	5,067	5,195	4,785	4,250	4,802	4,481
Upper Division Undergraduate	16,669	16,743	16,729	16,003	13,886	13,011	11,927
Graduate 1	16,992	18,184	18,795	20,871	17,608	20,237	22,173
Graduate 2	<u>656</u>	<u>714</u>	<u>831</u>	<u>579</u>	<u>622</u>	<u>679</u>	<u>561</u>
Total	38,926	40,708	41,550	42,238	36,366	38,729	39,142
<b>ENGINEERING</b>							
Lower Division Undergraduate	3,219	3,830	2,899	3,411	3,427	3,426	3,331
Upper Division Undergraduate	6,160	5,377	6,167	5,831	5,065	5,246	4,859
Graduate 1	1,378	1,458	2,069	3,035	3,895	4,022	4,107
Graduate 2	<u>1,719</u>	<u>1,780</u>	<u>1,931</u>	<u>1,908</u>	<u>1,623</u>	<u>1,550</u>	<u>1,433</u>
Total	12,476	12,445	13,066	14,185	14,010	14,244	13,730
<b>HEALTH PROFESSIONS</b>							
Lower Division Undergraduate	1,058	1,318	960	1,431	948	1,069	1,197
Upper Division Undergraduate	13,697	13,942	11,970	11,520	11,997	12,813	13,811
Graduate 1	12,606	13,553	14,267	16,090	16,186	16,940	16,022
Graduate 2	<u>489</u>	<u>501</u>	<u>544</u>	<u>597</u>	<u>664</u>	<u>607</u>	<u>1,974</u>
Total	27,850	29,314	27,741	29,638	29,795	31,429	33,004
<b>JOINT HEALTH SCIENCES</b>							
Upper Division Undergraduate	0	51	36	48	75	0	0
Graduate 1	389	380	272	307	246	218	218
Graduate 2	<u>13,459</u>	<u>12,825</u>	<u>13,207</u>	<u>12,777</u>	<u>12,725</u>	<u>12,939</u>	<u>14,652</u>
Total	13,848	13,256	13,515	13,132	13,046	13,157	14,870
<b>MEDICINE (EMT PROGRAM)</b>							
Lower Division Undergraduate	2,442	2,348	1,769	1,239	962	653	585
Upper Division Undergraduate	<u>6</u>	<u>1</u>	<u>1</u>	<u>1</u>	<u>12</u>	<u>32</u>	<u>8</u>
Total	2,448	2,349	1,770	1,240	974	685	593

## UAB ANNUAL CREDIT HOUR PRODUCTION BY SCHOOL (CONTINUED)

	<u>1997-98</u>	<u>1998-99</u>	<u>1999-2000</u>	<u>2000-01</u>	<u>2001-02</u>	<u>2002-03</u>	<u>2003-04</u>
<b>NATURAL SCIENCES AND MATHEMATICS</b>							
Lower Division Undergraduate	59,879	59,378	60,805	60,261	60,484	64,469	69,229
Upper Division Undergraduate	7,749	7,424	7,166	6,940	6,371	6,821	6,916
Graduate 1	2,708	2,595	2,941	3,287	3,206	3,250	3,202
Graduate 2	<u>1,856</u>	<u>1,769</u>	<u>1,680</u>	<u>2,088</u>	<u>2,290</u>	<u>2,538</u>	<u>2,504</u>
Total	<u>72,192</u>	<u>71,166</u>	<u>72,592</u>	<u>72,576</u>	<u>72,351</u>	<u>77,078</u>	<u>81,851</u>
<b>NURSING</b>							
Lower Division Undergraduate		0	0	0	0	0	0
Upper Division Undergraduate	9,087	9,171	7,895	7,685	7,966	8,935	11,111
Graduate 1	5,148	5,765	5,114	3,749	2,987	3,681	3,679
Graduate 2	<u>1,269</u>	<u>1,073</u>	<u>908</u>	<u>856</u>	<u>716</u>	<u>686</u>	<u>519</u>
Total	<u>15,504</u>	<u>16,009</u>	<u>13,917</u>	<u>12,290</u>	<u>11,669</u>	<u>13,302</u>	<u>15,309</u>
<b>OPTOMETRY</b>							
Upper Division Undergraduate	0	0	0	0	2	0	0
Graduate 1	163	47	81	99	118	78	85
Graduate 2	<u>445</u>	<u>300</u>	<u>499</u>	<u>611</u>	<u>682</u>	<u>671</u>	<u>642</u>
Total	<u>608</u>	<u>347</u>	<u>580</u>	<u>710</u>	<u>802</u>	<u>749</u>	<u>727</u>
<b>PUBLIC HEALTH</b>							
Upper Division Undergraduate	24	36	30	0	0	0	0
Graduate 1	9,218	9,509	8,643	7,560	7,283	8,408	7,345
Graduate 2	<u>2,227</u>	<u>2,176</u>	<u>2,213</u>	<u>2,138</u>	<u>1,799</u>	<u>2,088</u>	<u>2,122</u>
Total	<u>11,469</u>	<u>11,721</u>	<u>10,886</u>	<u>9,698</u>	<u>9,082</u>	<u>10,496</u>	<u>9,467</u>
<b>SOCIAL AND BEHAVIORAL SCIENCES</b>							
Lower Division Undergraduate	41,345	41,247	39,481	37,999	39,634	40,267	43,049
Upper Division Undergraduate	17,405	18,512	19,869	20,984	19,162	19,824	19,047
Graduate 1	2,311	2,614	2,689	2,491	2,437	2,898	2,858
Graduate 2	<u>2,288</u>	<u>2,051</u>	<u>2,036</u>	<u>1,773</u>	<u>1,718</u>	<u>1,852</u>	<u>1,973</u>
Total	<u>63,349</u>	<u>64,424</u>	<u>64,075</u>	<u>63,247</u>	<u>62,951</u>	<u>64,841</u>	<u>66,927</u>
<b>ROTC/COOPERATIVE ED/PROVOST'S OFFICE</b>							
Lower Division Undergraduate	512	942	1,522	1,846	1,573	1,822	1,251
Upper Division Undergraduate	<u>276</u>	<u>270</u>	<u>381</u>	<u>405</u>	<u>381</u>	<u>408</u>	<u>282</u>
Total	<u>788</u>	<u>1,212</u>	<u>1,903</u>	<u>2,251</u>	<u>1,954</u>	<u>2,230</u>	<u>1,533</u>
<b>GRADUATE SCHOOL</b>							
Graduate 1	0	57	90	60	51	45	108
Graduate 2	<u>968</u>	<u>1,155</u>	<u>1,072</u>	<u>1,197</u>	<u>1,030</u>	<u>1,152</u>	<u>1,238</u>
Total	<u>968</u>	<u>1,212</u>	<u>1,162</u>	<u>1,257</u>	<u>1,081</u>	<u>1,197</u>	<u>1,346</u>
<b>TOTAL UAB</b>							
Lower Division Undergraduate	177,731	180,865	179,465	178,513	175,841	184,931	195,547
Upper Division Undergraduate	98,395	99,255	99,208	101,969	96,104	101,395	102,645
Graduate 1	60,482	62,400	63,046	66,259	63,023	69,506	69,596
Graduate 2	<u>25,587</u>	<u>24,563</u>	<u>25,128</u>	<u>24,748</u>	<u>24,097</u>	<u>24,963</u>	<u>27,815</u>
<b>GRAND TOTAL</b>	<b>362,195</b>	<b>367,083</b>	<b>366,847</b>	<b>371,489</b>	<b>359,065</b>	<b>380,795</b>	<b>395,603</b>

Note: Figures include September and December Miniterms until 2000-01, when UAB changed to a semester calendar.

First professional programs in Dentistry, Medicine, and Optometry do not generate credit hours.

Source: Planning and Analysis, ACHE Credit Hour Production Reports Fall 1997 through Summer 2004

## DEGREES OFFERED AT UAB

<u>CIP Code*/Degree Program</u>	<u>Undergraduate Degrees</u>	<u>Graduate and Professional Degrees</u>
<b>SCHOOL OF ARTS AND HUMANITIES</b>		
05.0201 African American Studies	B.A.	
50.0701 Art	B.A., B.F.A.	
50.0703 Art History		M.A. <sup>1</sup>
09.0101 Communication Management		M.A.
09.0101 Communication Studies	B.A.	
23.0101 English	B.A.	M.A.
16.0101 Foreign Languages	B.A.	
50.0901 Music	B.A.	
38.0101 Philosophy	B.A.	
50.0101 Theatre	B.A.	
<b>SCHOOL OF BUSINESS</b>		
52.0301 Accounting	B.S.	M.Ac.
51.0701 Administration/Health Services		Ph.D.
52.0201 Business Administration		M.B.A.
52.0601 Economics	B.S.	
52.0801 Finance	B.S.	
52.0299 Industrial Distribution	B.S.	
52.1201 Information Systems	B.S.	
52.0201 Management	B.S.	
52.1401 Marketing	B.S.	
<b>SCHOOL OF DENTISTRY</b>		
51.0601 Dental Assisting	Certificate	
51.0401 Dentistry		D.M.D.
51.0501 Dentistry		M.S.
<b>SCHOOL OF EDUCATION</b>		
13.1302 Arts Education		M.A. in Education
13.1101 Counseling		M.A.
13.1210 Early Childhood Education	B.S.	M.A. in Education, Ph.D.
13.0101 Education		Ed.S.
13.0401 Educational Leadership		M.A. in Education, Ed.S., Ed.D. <sup>1</sup> , Ph.D. <sup>1</sup>
13.1202 Elementary Education	B.S.	M.A. in Education
13.1307 Health Education	B.S.	M.A. in Education
31.0599 Health Education/Promotion		Ph.D. <sup>1</sup>
13.1205 High School Education	B.S.	M.A. in Education
13.1314 Physical Education	B.S.	M.A. in Education
13.1001 Special Education	B.S.	M.A. in Education

## DEGREES OFFERED AT UAB (CONTINUED)

<u>CIP Code*/Degree Program</u>	<u>Undergraduate Degrees</u>	<u>Graduate and Professional Degrees</u>
<b>SCHOOL OF ENGINEERING</b>		
14.0501 Biomedical Engineering	B.S.B.M.E.	M.S.B.M.E., Ph.D.
14.0801 Civil Engineering	B.S.C.E.	M.S.C.E., Ph.D. <sup>6</sup>
14.0901 Computer Engineering		Ph.D. <sup>7</sup>
14.1001 Electrical Engineering	B.S.E.E.	M.S.E.E., Ph.D. <sup>2</sup>
14.1401 Environmental Health Engineering		Ph.D.
14.1801 Materials Engineering	B.S.Mt.E.	M.S.Mt.E., Ph.D. <sup>1</sup>
30.9999 Materials Science		Ph.D. <sup>3</sup>
14.1901 Mechanical Engineering	B.S.M.E.	M.S.M.E., Ph.D. <sup>2</sup>
<b>SCHOOL OF HEALTH RELATED PROFESSIONS</b>		
51.0701 Administration/Health Services		Ph.D.
51.9999 Health Sciences	B.S.	
51.1005 Clinical Laboratory Science		M.S.
51.3102 Clinical Nutrition and Dietetics		M.S.
51.1002 Cytotechnology	B.S.	
51.3101 Dietetic Internship	Certificate (Postbaccalaureate)	
51.0701 Health Administration		M.S.H.A.
51.0799 Health Informatics		M.S.H.I.
51.0706 Health Information Management	B.S.	
51.1005 Medical Technology	B.S.	
51.0905 Nuclear Medicine Technology	B.S.	
51.1604 Nurse Anesthesia		M.N.A.
30.1901 Nutrition Sciences		Ph.D.
51.2306 Occupational Therapy		M.S.
51.2308 Physical Therapy		D.Sc.P.T., D.P.T.
51.0907 Radiologic Sciences	B.S.	
51.0908 Respiratory Therapy	B.S.	
51.0912 Surgical Physician Assistant	B.S.	
51.0912 Physician Assistant Studies		M.S.
<b>JOINT HEALTH SCIENCES (Schools of Dentistry and Medicine)</b>		
26.0102 Basic Medical Sciences		M.S.B.M.S.
26.0205 Biochemistry and Molecular Genetics		Ph.D.
26.0401 Cell Biology		Ph.D.
26.0902 Cellular and Molecular Physiology		Ph.D.
26.0806 Genetics		Ph.D.
26.0502 Microbiology		Ph.D.
26.0906 Neurobiology		Ph.D.
26.0910 Pathology		Ph.D.
26.1007 Pharmacology and Toxicology		Ph.D.
<b>SCHOOL OF MEDICINE</b>		
51.0904 Emergency Medical Technician	Certificate	
51.1201 Medicine		M.D.

## DEGREES OFFERED AT UAB (CONTINUED)

<u>CIP Code*/Degree Program</u>	<u>Undergraduate Degrees</u>	<u>Graduate and Professional Degrees</u>
<b>SCHOOL OF NATURAL SCIENCES AND MATHEMATICS</b>		
05.0201 African American Studies	B.A.	
27.0301 Applied Mathematics		Ph.D. <sup>4</sup>
26.0101 Biology	B.S.	M.S., Ph.D.
40.0501 Chemistry	B.S.	M.S., Ph.D.
11.0101 Computer and Information Sciences	B.S.	M.S., Ph.D.
27.0101 Mathematics	B.S.	M.S.
30.0101 Natural Science	B.S.	
40.0801 Physics	B.S.	M.S., Ph.D.
<b>SCHOOL OF NURSING</b>		
51.1601 Nursing	B.S.N.	M.S.N.
51.1608 Nursing		Ph.D.
<b>SCHOOL OF OPTOMETRY</b>		
51.1701 Optometry		O.D.
26.0909 Vision Science		M.S., Ph.D.
<b>SCHOOL OF PUBLIC HEALTH</b>		
26.1102 Biostatistics		M.S., Ph.D.
14.1401 Environmental Health Engineering		Ph.D.
51.2202 Environmental Health Sciences		Ph.D.
26.1309 Epidemiology		Ph.D.
31.0599 Health Education/Promotion		Ph.D. <sup>1</sup>
51.2201 Public Health		M.P.H., M.S.P.H., Dr.P.H.
<b>SCHOOL OF SOCIAL AND BEHAVIORAL SCIENCES</b>		
05.0201 African American Studies	B.A.	
45.0201 Anthropology	B.A.	M.A. <sup>5</sup>
43.0199 Criminal Justice	B.S.	M.S.C.J.
52.0601 Economics	B.A.	
43.0106 Forensic Science		M.S.F.S.
54.0101 History	B.A.	M.A.
45.9999 International Studies	B.A.	
45.1101 Medical Sociology		Ph.D.
45.1001 Political Science	B.A.	
42.0101 Psychology	B.S.	M.A., Ph.D.
44.0401 Public Administration		M.P.A.
44.0701 Social Work	B.S.S.W.	
45.1101 Sociology	B.A.	M.A.



## DEGREES OFFERED AT UAB (CONTINUED)

\* Classification of Instructional Programs developed by the U.S. Department of Education's National Center for Education Statistics.

Note: Joint and shared programs are those in which UAB awards the degree. Cooperative programs are those in which students take classes at UAB but the degree is awarded by another institution.

<sup>1</sup> Joint program with the University of Alabama.

<sup>2</sup> Cooperative program with the University of Alabama and the University of Alabama in Huntsville.

<sup>3</sup> Joint interdisciplinary program with the University of Alabama and the University of Alabama in Huntsville.

<sup>4</sup> Joint program with the University of Alabama and the University of Alabama in Huntsville.

<sup>5</sup> Cooperative program with the University of Alabama.

<sup>6</sup> Joint program with the University of Alabama in Huntsville.

<sup>7</sup> Shared program with the University of Alabama in Huntsville.

### TOTAL DEGREES AVAILABLE

Certificates	3
Postbaccalaureate   1	
Subbaccalaureate   2	
Baccalaureate	51
Master's	45
Specialist's	2
Doctoral	35
First Professional	<u>3</u>
Total	139

## UAB DEGREES CONFERRED JULY 1, 1969 - JUNE 30, 2004

<u>Year*</u>	<u>Bachelor's</u>	<u>Master's</u>	<u>Post Master's</u>	<u>Doctor's</u>	<u>D.M.D., M.D., O.D.</u>	<u>Certificates</u>	<u>Total</u>
1969-70	328	16	0	5	127	68	544
1970-71	498	93	0	18	122	42	773
1971-72	625	197	0	11	136	165	1,134
1972-73	821	346	17	19	150	142	1,495
1973-74	926	459	48	18	178	172	1,801
1974-75	957	610	130	17	317	503	2,534
1975-76	1,041	891	199	8	204	572	2,915
1976-77	1,138	861	162	26	174	438	2,799
1977-78	1,156	783	134	18	211	511	2,813
1978-79	1,180	958	73	21	252	642	3,126
1979-80	1,199	921	134	26	272	774	3,326
1980-81	1,289	928	90	30	285	483	3,105
1981-82	1,195	823	75	28	281	331	2,733
1982-83	1,200	753	51	40	266	373	2,683
1983-84	1,348	605	50	49	254	366	2,672
1984-85	1,379	608	49	41	244	381	2,702
1985-86	1,379	652	52	32	247	346	2,708
1986-87	1,347	625	53	41	237	375	2,678
1987-88	1,406	701	31	54	238	298	2,728
1988-89	1,313	846	20	75	222	266	2,742
1989-90	1,332	804	28	65	233	380	2,842
1990-91	1,324	971	20	95	244	413	3,067
1991-92	1,487	848	34	88	229	430	3,116
1992-93	1,604	842	19	108	243	435	3,251
1993-94	1,582	859	17	107	238	467	3,270
1994-95	1,610	869	58	97	255	292	3,181
1995-96	1,556	940	62	126	252	21	2,957
1996-97	1,720	1,087	49	139	256	20	3,271
1997-98	1,581	998	26	142	241	20	3,008
1998-99	1,528	1,055	34	114	252	21	3,004
1999-2000	1,562	1,051	25	125	254	24	3,041
2000-01	1,646	1,075	31	121	246	25	3,144
2001-02	1,618	1,084	32	125	245	27	3,131
2002-03	1,464	1,060	60	155	250	80	3,069
2003-04	1,575	1,065	37	111	257	55	3,100
Totals Awarded to Date	44,914	27,284	1,900	2,295	8,112	9,958	94,463

Note: Does not include degrees awarded by the School of Education in Israel.

\*The federal reporting period for completions is July 1 through June 30.

Source: HEGIS Degrees and Other Formal Awards Conferred and IPEDS Completions Reports

**UAB DEGREES AWARDED BY SCHOOL**  
**1969-70 through 2003-04 <sup>1</sup>**

	<b>1969-70 - 1993-94</b>	<b>1994-95</b>	<b>1995-96</b>	<b>1996-97</b>	<b>1997-98</b>	<b>1998-99</b>	<b>1999- 2000</b>	<b>2000-01</b>	<b>2001-02</b>	<b>2002-03</b>	<b>2003-04</b>	<b>Grand Total</b>
<b>ARTS AND HUMANITIES</b>												
Bachelor's	2,064	133	113	111	116	119	143	162	229	199	226	3,615
Master's	174	10	10	6	10	5	9	9	9	9	14	265
<b>BUSINESS <sup>2</sup></b>												
Bachelor's	5,371	301	254	292	237	297	297	321	287	286	334	8,277
Master's	1,581	121	168	202	206	192	165	159	166	149	153	3,262
<b>DENTISTRY</b>												
Certificates	448	13	0	0	0	0	0	0	13	11	21	506
Bachelor's	111	10	9	0	0	0	0	0	0	0	0	130
Master's	156	19	9	14	6	12	11	9	11	8	11	266
First Professional	1,416	53	51	54	55	51	57	54	56	54	56	1,957
<b>EDUCATION</b>												
Bachelor's	4,816	227	186	204	202	216	191	182	190	136	116	6,666
Master's	8,948	269	314	365	313	306	321	327	365	354	331	12,213
Postmaster's	1,486	58	62	49	26	34	25	31	32	60	37	1,900
Doctorates	59	12	19	14	20	7	15	12	8	20	9	195
<b>ENGINEERING</b>												
Bachelor's	1,867	89	86	85	102	91	82	98	96	73	74	2,743
Master's	478	55	44	47	39	49	30	50	71	91	88	1,042
Doctorates	27	5	9	8	10	7	7	10	7	11	8	109
<b>HEALTH RELATED PROFESSIONS</b>												
Certificates	8,925	279	21	20	20	21	24	25	14	63	34	9,446
Bachelor's	2,391	156	149	152	171	138	163	158	105	118	124	3,825
Master's	1,167	97	125	122	128	161	151	174	170	183	165	2,643
Doctorates <sup>2</sup>	33	6	5	6	7	4	6	2	6	5	9	89
<b>JOINT HEALTH SCIENCES</b>												
Master's	232	10	9	11	5	8	2	9	2	7	5	300
Doctorates	467	32	44	57	41	51	44	55	53	54	48	946
<b>MEDICINE</b>												
Certificates	0	0	0	0	0	0	0	0	0	6	0	6
First Professional	3,530	159	162	164	148	166	157	153	155	157	160	5,111

	<b>1969-70 - 1993-94</b>	<b>1994-95</b>	<b>1995-96</b>	<b>1996-97</b>	<b>1997-98</b>	<b>1998-99</b>	<b>1999- 2000</b>	<b>2000-01</b>	<b>2001-02</b>	<b>2002-03</b>	<b>2003-04</b>	<b>Grand Total</b>
<b>NATURAL SCIENCES AND MATHEMATICS</b>												
Bachelor's	3,171	161	178	195	197	187	180	169	158	154	187	4,937
Master's	512	30	33	38	50	36	58	49	54	45	57	962
Doctorates	104	6	17	15	15	13	12	8	15	12	6	223
<b>NURSING</b>												
Bachelor's	4,290	209	191	281	143	114	133	110	114	96	111	5,792
Master's	2,007	94	61	101	68	72	90	92	73	69	44	2,771
Doctorates	238	20	13	18	19	8	16	5	12	17	6	372
<b>OPTOMETRY</b>												
Bachelor's	312	5	3	1	3	3	1	0	3	0	0	331
Master's	31	2	5	3	5	1	1	3	4	1	2	58
Doctorates	14	1	1	2	1	1	1	1	3	4	2	31
First Professional	658	43	39	38	38	35	40	39	34	39	41	1,044
<b>PUBLIC HEALTH <sup>3</sup></b>												
Master's	1,076	115	110	119	130	173	161	141	124	93	146	2,388
Doctorates	51	6	8	11	11	10	15	18	9	19	20	178
<b>SOCIAL AND BEHAVIORAL SCIENCES</b>												
Bachelor's	4,661	319	387	399	410	363	372	446	436	402	403	8,598
Master's	638	47	52	59	38	40	52	53	35	51	49	1,114
Doctorates	47	9	10	8	18	13	9	10	12	13	3	152
<b>TOTAL</b>												
Certificates	9,373	292	21	20	20	21	24	25	27	80	55	9,958
Bachelor's	29,054	1,610	1,556	1,720	1,581	1,528	1,562	1,646	1,618	1,464	1,575	44,914
Master's	17,000	869	940	1,087	998	1,055	1,051	1,075	1,084	1,060	1,065	27,284
Postmaster's	1,486	58	62	49	26	34	25	31	32	60	37	1,900
Doctorates	1,040	97	126	139	142	114	125	121	125	155	111	2,295
First Professional	5,604	255	252	256	241	252	254	246	245	250	257	8,112
<b>GRAND TOTAL</b>	<b>63,557</b>	<b>3,181</b>	<b>2,957</b>	<b>3,271</b>	<b>3,008</b>	<b>3,004</b>	<b>3,041</b>	<b>3,144</b>	<b>3,131</b>	<b>3,069</b>	<b>3,100</b>	<b>94,463</b>

<sup>1</sup> The federal reporting period for completions is July 1 through June 30.

<sup>2</sup> The Ph.D. degrees awarded in the Administration/Health Services program are awarded jointly by the Schools of Business and Health Related Professions.

<sup>3</sup> Prior to 1980-81, degrees in Public Health were earned in the School of Health Related Professions.

# UAB REQUIRED STUDENT TUITION AND FEES

## FALL 2004

<u>Program/Fee</u>	<u>In-State</u>	<u>Out-of-State</u>
<b><u>Undergraduate and Graduate Programs</u></b>		
<b>General Tuition Fee (Per Credit Hour Charges):</b>		
<u>Undergraduates taking courses in:</u>		
Schools other than Health Related Professions,		
Nursing, or Public Health	\$128	\$320
Health Related Professions	155	388
Nursing	142	355
Public Health	132	330
<u>Graduates taking courses in:</u>		
Schools other than Health Related Professions,		
Nursing, or Public Health	\$162	\$405
Health Related Professions	213	533
Nursing	197	493
Public Health	169	423
<b>Building Fee for students taking courses in:</b>		
Arts and Humanities, Business, Education, Engineering, Natural Sciences		
and Mathematics, Social and Behavioral Sciences, and Health Related Professions:		
Flat Fee per Semester plus	\$32	\$32
Per Credit Hour Charge	3	3
Joint Health Sciences, Nursing, Public Health, and Undergraduate Emergency Medicine:		
Flat Fee per Semester	\$32	\$32
<b>Student Service Fee for all students</b>		
Flat Fee per Semester plus	\$37	\$37
Per Credit Hour Charge	8	8
<b>Student Recreation Center Fee <sup>1</sup></b>		
Flat fee per term: Less than 12 hours <sup>2</sup>	\$48	\$48
Flat fee per term: 12 hours or more <sup>3</sup>	\$72	\$72
<b>Learning Resource Fee for students taking courses in:</b>		
<b>(Per Credit Hour Charges)</b>		
A&H, NSM, SBS <sup>4</sup>	\$7	\$7
Business, Education, Engineering, and Public Health	11	11
Health Related Professions and Nursing	9	9
Credit-hour courses in schools other than the above	2	2
<b><u>Dental Assisting Certificate Program in Dentistry per Semester</u></b>		
Tuition	\$1,016	\$2,540
Student Service Fee	133	133
Building Fee	32	32
Student Recreation Center Fee <sup>5</sup>	72	72
Technology Fee	24	24
<b><u>First Professional Programs</u></b>		
<b>Medicine per Year:</b>		
General Tuition	\$10,219	\$30,657
Building Fee	885	885
Student Recreation Center Fee	144	144
Student Service Fee	362	362

## UAB REQUIRED STUDENT TUITION AND FEES (CONTINUED)

<u>Program/Fee</u>	<u>In-State</u>	<u>Out-of-State</u>
--------------------	-----------------	---------------------

### First Professional Programs (Continued)

#### **Dentistry per Quarter:**

General Tuition - 1st & 2nd Year Students	\$2,919	\$8,757
General Tuition - 3rd Year Students	3,082	9,246
General Tuition - 4th Year Students	3,406	10,218
Building Fee	296	296
Student Recreation Center Fee	48	48
Student Service Fee	121	121
Technology Fee	74	74

#### **Optometry per Quarter:**

General Tuition	\$2,385	\$7,155
Building Fee	442	442
Student Recreation Center Fee <sup>6</sup>	48	48
Student Service Fee	121	121
Technology Fee	74	74

### **TOTAL ANNUAL REQUIRED TUITION AND FEES FOR FULL-TIME STUDENTS <sup>7</sup>**

	<u>In-State</u>	<u>Out-of-State</u>
Undergraduates taking 30 semester credit hours per year in:		
A&H, NSM, SBS <sup>4</sup>	\$4,662	\$10,422
Business, Education, and Engineering	4,782	10,542
Health Related Professions	5,532	12,522
Nursing	5,052	11,442
Undergraduate Emergency Medicine	4,422	10,182
Graduate students taking 24 semester credit hours per year in:		
A&H, NSM, SBS <sup>4</sup>	\$4,602	\$10,434
Business, Education, and Engineering	4,698	10,530
Health Related Professions	5,874	13,554
Nursing	5,418	12,522
Public Health	4,794	10,890
All other Graduate Programs	4,410	10,242
Dental Assisting Students <sup>8</sup>	\$3,819	\$8,391
First Professionals in:		
Dentistry <sup>9</sup> - 1st & 2nd Year students	\$10,374	\$27,888
Dentistry <sup>9</sup> - 3rd Year students	10,863	29,355
Dentistry <sup>9</sup> - 4th Year students	11,835	32,271
Medicine	11,610	32,048
Optometry <sup>10</sup>	12,292	31,372

<sup>1</sup>For all students except First Professionals and students enrolled in the Dental Assisting Program.

<sup>2</sup>Students who enroll for less than 12 hours for the summer term will be charged \$40 (versus \$48 for fall and spring).

<sup>3</sup>Students who enroll for 12 hours or more for the summer term will be charged \$60 (versus \$72 for fall and spring).

<sup>4</sup>Arts and Humanities, Natural Sciences & Mathematics, and Social & Behavioral Sciences.

<sup>5</sup>Dental Assisting students who enroll for the summer term will be charged the summer term fee of \$60 (versus \$72 for fall and spring).

<sup>6</sup>Optometry Students who enroll for the summer term will be charged the summer term fee of \$60 (versus \$48 per qtr for the other term).

<sup>7</sup>Reflects annual charges for required fees indicated above. Additional fees may apply.

<sup>8</sup>Year-round program, assumes three terms (fall, spring and summer) per year.

<sup>9</sup>Assumes three quarters per year.

<sup>10</sup>Assumes four quarters per year since three of four Optometry classes enroll for 4 quarters per year.

**UAB STUDENT AID FUNDS AVAILABLE**  
**1997-98 through 2003-04**

	<u>1997-98*</u>	<u>1998-99</u>	<u>1999-2000</u>	<u>2000-01</u>	<u>2001-02</u>	<u>2002-03</u>	<u>2003-04</u>
College Work Study	\$1,175,607	\$1,117,156	\$1,187,473	\$1,107,557	\$1,441,083	1,650,489	1,695,955
Federal Perkins Loan	2,120,680	2,105,848	2,368,439	2,722,423	2,712,489	3,119,592	3,177,837
Supplemental Educational Opportunity Grant	744,070	901,751	956,056	712,213	907,526	702,568	732,660
Subtotal, College Based Aid	\$4,040,357	\$4,124,755	\$4,511,968	\$4,542,193	\$5,061,098	\$5,472,649	\$5,606,452
Pell Grants	4,410,102	5,275,414	5,281,232	6,143,331	7,368,082	8,610,016	9,797,533
Health Professional Loans	586,442	656,834	554,472	387,013	651,221	299,562	790,364
Guaranteed Student Loans	0	0	0	0	0	0	0
Institutional Funds**	18,930,550	21,896,206	24,596,467	27,871,153	34,656,154	35,318,975	33,422,722
State Funds***	638,843	601,457	890,851	1,051,745	987,942	570,492	415,648
Private Funds	3,948,968	2,043,039	1,652,630	2,082,510	2,816,537	3,465,198	4,353,458
Other Government Grants	253,943	229,233	101,042	238,408	69,772	47,514	40,949
Federal Direct Loans	41,467,384	47,887,888	46,647,839	45,800,384	49,864,568	55,283,971	62,474,818
Total Funds	\$74,276,589	\$82,714,826	\$84,236,501	\$88,116,737	\$101,475,374	\$109,068,377	\$116,901,944
Percent Change from Previous Year	+12%	+11%	+2%	+5%	+15%	+7%	+7%
Unduplicated Number of Recipients	8,489	8,715	8,624	8,900	9,090	10,023	11,114
Percent Change from Previous Year	+1%	+3%	-1%	3%	2%	10%	11%
Unduplicated Number of Applicants	15,084	15,071	15,166	15,517	15,021	16,009	16,762
Percent Change from Previous Year	+8%	0%	+1%	+2%	-3%	7%	5%

Note: Data is for federal years, July through June.

\*Includes UAB Walker College.

\*\*Includes institutional employment.

\*\*\*Includes scholarships awarded to UAB students in Dentistry, Medicine, and Optometry.

Sources: Office of Financial Aid, Office of Human Resource Management Information Systems

## **UAB ATHLETICS**

The University of Alabama at Birmingham initiated an intercollegiate varsity athletic program in 1978. UAB now participates as a Division I member of the NCAA. Through the 1990-91 season, UAB was a member of the Sun Belt Conference. In 1991, UAB became a charter member of the Great Midwest Conference. In 1995, UAB joined the newly created Conference USA. The Blazers became a football member of Conference USA in the 1999 season.

**Athletic Director**      Watson Brown

### **Men's Programs**

Baseball  
Basketball  
Football  
Golf  
Soccer  
Tennis

### **Head Coach**

Larry Giangrosso  
Mike Anderson  
Watson Brown  
Alan Kaufman  
Mike Getman  
Derek Tarr

### **Women's Programs**

Basketball  
Track & Field/Cross-Country  
Golf  
Rifle  
Soccer  
Softball  
Synchronized Swimming  
Tennis  
Volleyball

### **Head Coach**

Audra Smith  
Ray Stanfield  
Kim Wilcox  
Lori Goodwin  
Paul Harbin  
Marla Townsend  
Lisa Riddell  
Mert Ertunga  
Melinda Claiborne

Source: UAB Athletics Sports Information



# FACULTY & STAFF



## UAB WORK FORCE FY 2004-05\*

<b>Organizational Area</b>	<b>Full-time</b>		<b>Part-time</b>		<b>Total</b>		<b>Grand Total</b>
	<b>Men</b>	<b>Women</b>	<b>Men</b>	<b>Women</b>	<b>Men</b>	<b>Women</b>	
University	3,289	4,381	1,648	2,802	4,937	7,183	12,120
Hospital	1,394	3,783	195	989	1,589	4,772	6,361
<b>TOTAL</b>	<b>4,683</b>	<b>8,164</b>	<b>1,843</b>	<b>3,791</b>	<b>6,526</b>	<b>11,955</b>	<b>18,481</b>

<b>Job Category</b>	<b>Full-time</b>		<b>Part-time</b>		<b>Total</b>		<b>Grand Total</b>
	<b>Men</b>	<b>Women</b>	<b>Men</b>	<b>Women</b>	<b>Men</b>	<b>Women</b>	
Executive/Administrative	123	126	10	8	133	134	267
Faculty**	1,284	615	93	67	1,377	682	2,059
Professional Nonfaculty	1,954	3,566	662	1,392	2,616	4,958	7,574
Secretarial/Clerical	168	1,905	848	1,912	1,016	3,817	4,833
Technical/Paraprofessional	474	927	109	187	583	1,114	1,697
Service Maintenance	351	1,017	79	217	430	1,234	1,664
Skilled Crafts	329	8	42	8	371	16	387
<b>TOTAL</b>	<b>4,683</b>	<b>8,164</b>	<b>1,843</b>	<b>3,791</b>	<b>6,526</b>	<b>11,955</b>	<b>18,481</b>

<b>Job Category</b>	<b>American</b>						<b>Total</b>
	<b>Indian</b>	<b>Asian</b>	<b>Black</b>	<b>Hispanic</b>	<b>White</b>	<b>Unknown</b>	
Executive/Administrative	0	1	27	3	235	1	267
Faculty**	8	253	103	57	1,631	7	2,059
Professional Nonfaculty	13	902	1,252	85	5,268	54	7,574
Secretarial/Clerical	7	210	2,597	19	1,974	26	4,833
Technical/Paraprofessional	1	40	684	12	952	8	1,697
Service Maintenance	0	6	1,352	2	270	34	1,664
Skilled Crafts	1	1	121	0	264	0	387
<b>TOTAL</b>	<b>30</b>	<b>1,413</b>	<b>6,136</b>	<b>178</b>	<b>10,594</b>	<b>130</b>	<b>18,481</b>

\*These figures include student workers, hospital residents, postdoctoral employees, and adjunct instructors.  
The category University includes Health System Administration.

\*\*Employees who also have faculty appointments are included in their primary occupational classification.

Source: Office of Human Resource Management Data Systems, data as of October 31, 2004

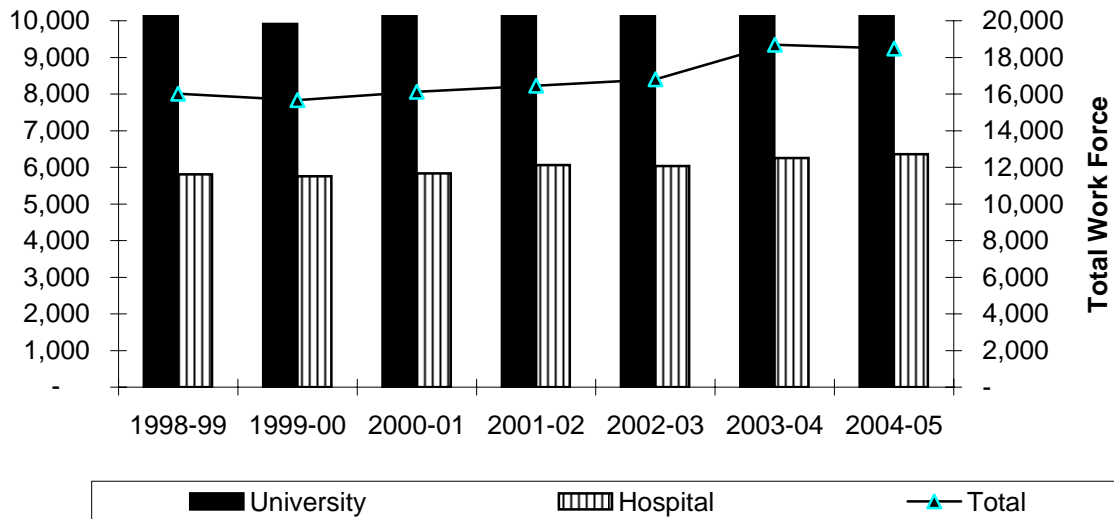
**UAB WORK FORCE BY AREA, STATUS, GENDER, AND JOB CATEGORY  
1998-99 through 2004-05**

	<b>1998-99</b>	<b>1999-00</b>	<b>2000-01</b>	<b>2001-02</b>	<b>2002-03</b>	<b>2003-04</b>	<b>2004-05</b>
<b>By Area</b>							
University	10,212	9,917	10,294	10,386	10,764	12,445	12,120
Hospital	5,806	5,758	5,833	6,065	6,032	6,251	6,361
Unknown	4	-	-	-	-	-	-
Total	16,022	15,675	16,127	16,451	16,796	18,696	18,481
<b>By Status</b>							
Full-time	10,112	11,012	11,120	12,059	12,649	12,944	12,847
Part-time	5,910	4,663	5,007	4,392	4,147	5,752	5,634
Total	16,022	15,675	16,127	16,451	16,796	18,696	18,481
<b>By Gender</b>							
Men	5,707	5,575	5,737	5,856	5,937	6,801	6,526
Women	10,315	10,100	10,390	10,595	10,859	11,895	11,955
Total	16,022	15,675	16,127	16,451	16,796	18,696	18,481
<b>By Job Category</b>							
Executive/Administrative	240	258	260	257	316	295	267
Faculty	1,810	1,895	1,934	1,988	2,016	2,630	2,059
Professional Nonfaculty	6,480	6,271	6,512	6,721	7,067	7,496	7,574
Secretarial/Clerical	3,878	3,718	3,838	3,867	4,023	4,678	4,833
Technical/Paraprofessional	1,764	1,674	1,682	1,722	1,474	1,606	1,697
Service Maintenance	1,544	1,550	1,595	1,580	1,573	1,605	1,664
Skilled Crafts	306	309	306	316	327	386	387
Total	16,022	15,675	16,127	16,451	16,796	18,696	18,481

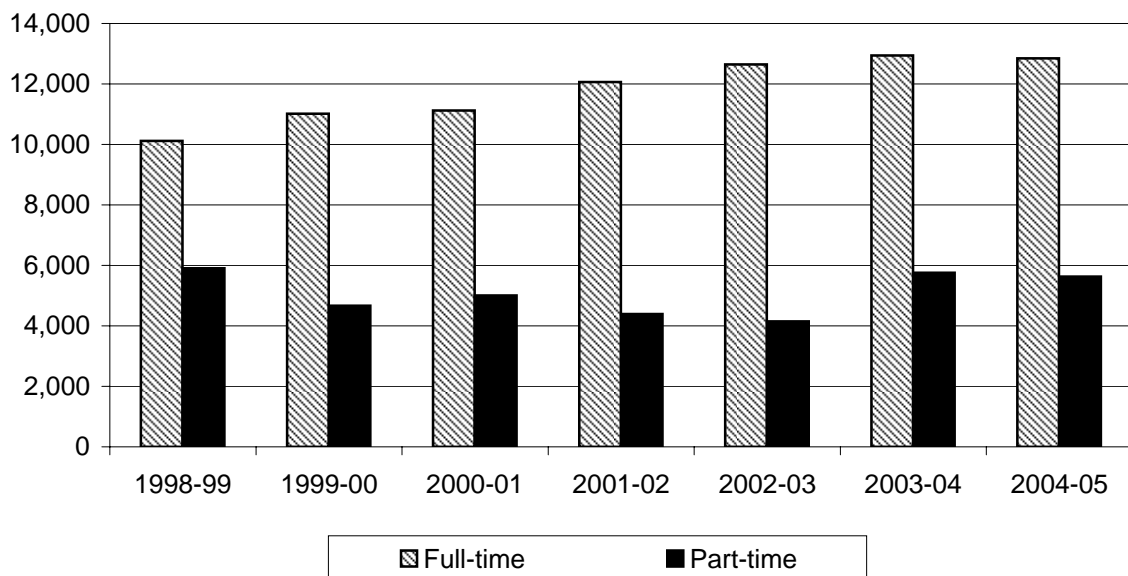
NOTES: The increase in workforce size in 2003-04 is the result of the inclusion of individuals formerly paid by requisition (such as adjunct/supplemental instructors) and therefore not previously included in employee counts. For questions, please contact the UAB Director of Payroll Services. The category University includes Health System Administration.

Source: Office of Human Resource Management Data Systems, data as of October of each year

## UAB WORK FORCE BY AREA 1998-99 through 2004-05



## UAB WORK FORCE BY STATUS 1998-99 through 2004-05



## UAB FULL-TIME WORK FORCE AND PAYROLL 1995-2004

### FULL-TIME WORK FORCE

<u>Year</u>	<u>Full-time Nonfaculty</u>	<u>Full-time Faculty</u>	<u>Total Full-time Work Force</u>	<u>Change from Previous Year</u>
1995	8,499	1,725	10,224	-1.5%
1996	8,518	1,653	10,171	-0.5%
1997	8,595	1,625	10,220	0.5%
1998	8,469	1,643	10,112	-1.1%
1999	9,324	1,688	11,012	8.9%
2000	9,393	1,727	11,120	1.0%
2001	10,220	1,839	12,059	8.4%
2002	10,768	1,881	12,649	4.9%
2003	11,011	1,933	12,944	2.3%
2004	10,948	1,899	12,847	-0.7%

Source: Office of Human Resources Management Information Systems, Compliance Statistics as of  
October of each year

### PAYROLL

<u>Year</u>	<u>Payroll</u>	<u>Change from Previous Year</u>	
		<u>Amount</u>	<u>Percent</u>
1995	\$425,177,618	13,779,483	3.3%
1996	437,611,483	12,433,865	2.9%
1997	466,822,683	29,211,200	6.7%
1998	503,859,895	37,037,212	7.9%
1999	529,747,149	25,887,254	5.1%
2000	559,429,640	29,682,491	5.6%
2001	590,018,287	30,588,647	5.5%
2002	618,950,006	28,931,719	4.9%
2003	664,308,102	45,358,096	7.3%
2004	693,791,536	29,483,434	4.4%

Source: UAB Payroll Department Calendar Year Total (does not include fringe benefits)

**UAB FULL-TIME FACULTY\* BY RANK, GENDER, AND TENURE STATUS  
FALL 2004**

<u>School/Unit</u>	<u>MEN</u>		<u>WOMEN</u>		<u>TOTAL</u>	
	<u>Number</u>	<u>Tenured</u>	<u>Number</u>	<u>Tenured</u>	<u>Number</u>	<u>Tenured</u>
<b>ARTS AND HUMANITIES</b>						
Professor	19	19	6	6	25	25
Associate	21	19	12	12	33	31
Assistant	13	0	19	0	32	0
Instructor	7	0	3	0	10	0
Other	1	0	0	0	1	0
TOTAL	61	38	40	18	101	56
<b>BUSINESS</b>						
Professor	18	18	1	1	19	19
Associate	13	13	6	5	19	18
Assistant	8	0	4	1	12	1
Instructor	3	0	0	0	3	0
Other	0	0	1	0	1	0
TOTAL	42	31	12	7	54	38
<b>DENTISTRY</b>						
Professor	18	17	2	2	20	19
Associate	14	7	5	1	19	8
Assistant	11	1	6	0	17	1
Instructor	3	0	0	0	3	0
Other	0	0	0	0	0	0
TOTAL	46	25	13	3	59	28
<b>EDUCATION</b>						
Professor	6	6	5	4	11	10
Associate	10	8	11	8	21	16
Assistant	4	0	14	0	18	0
Instructor	0	0	6	0	6	0
Other	0	0	0	0	0	0
TOTAL	20	14	36	12	56	26
<b>ENGINEERING</b>						
Professor	12	9	2	2	14	11
Associate	22	14	3	1	25	15
Assistant	16	0	1	0	17	0
Instructor	0	0	1	0	1	0
Other	0	0	0	0	0	0
TOTAL	50	23	7	3	57	26

\*Figures include employees with full-time regular faculty appointments.

# **UAB FULL-TIME FACULTY\* (CONTINUED)**

<u>School/Unit</u>	<u>MEN</u>		<u>WOMEN</u>		<u>TOTAL</u>	
	<u>Number</u>	<u>Tenured</u>	<u>Number</u>	<u>Tenured</u>	<u>Number</u>	<u>Tenured</u>
<b>HEALTH RELATED PROFESSIONS</b>						
Professor	18	14	3	3	21	17
Associate	15	8	25	18	40	26
Assistant	9	0	16	0	25	0
Instructor	3	0	3	0	6	0
Other	0	0	0	0	0	0
TOTAL	45	22	47	21	92	43
<b>JOINT HEALTH SCIENCES</b>						
Professor	73	72	11	10	84	82
Associate	39	20	13	7	52	27
Assistant	42	0	22	1	64	1
Instructor	9	0	5	0	14	0
Other	0	0	0	0	0	0
TOTAL	163	92	51	18	214	110
<b>MEDICINE</b>						
Professor	196	175	37	30	233	205
Associate	149	66	50	20	199	86
Assistant	202	0	107	0	309	0
Instructor	27	0	18	0	45	0
Other	0	0	0	0	0	0
TOTAL	574	241	212	50	786	291
<b>NATURAL SCIENCES AND MATHEMATICS</b>						
Professor	33	33	2	2	35	35
Associate	21	19	2	2	23	21
Assistant	12	1	4	1	16	2
Instructor	4	0	3	0	7	0
Other	1	0	0	0	1	0
TOTAL	71	53	11	5	82	58
<b>NURSING</b>						
Professor	2	2	9	9	11	11
Associate	1	0	14	7	15	7
Assistant	0	0	18	5	18	5
Instructor	0	0	0	0	0	0
Other	0	0	0	0	0	0
TOTAL	3	2	41	21	44	23
<b>OPTOMETRY</b>						
Professor	15	15	2	0	17	15
Associate	14	9	3	1	17	10
Assistant	4	0	7	0	11	0
Instructor	0	0	0	0	0	0
Other	0	0	0	0	0	0
TOTAL	33	24	12	1	45	25

\*Figures include employees with full-time regular faculty appointments.

# **UAB FULL-TIME FACULTY\* (CONTINUED)**

<b>School/Unit</b>	<b>MEN</b>		<b>WOMEN</b>		<b>TOTAL</b>	
	<b>Number</b>	<b>Tenured</b>	<b>Number</b>	<b>Tenured</b>	<b>Number</b>	<b>Tenured</b>
<b>PUBLIC HEALTH</b>						
Professor	17	15	7	6	24	21
Associate	10	6	9	6	19	12
Assistant	14	0	14	0	28	0
Instructor	2	0	4	0	6	0
Other	0	0	0	0	0	0
<b>TOTAL</b>	<b>43</b>	<b>21</b>	<b>34</b>	<b>12</b>	<b>77</b>	<b>33</b>
<b>SOCIAL AND BEHAVIORAL SCIENCES</b>						
Professor	22	21	3	3	25	24
Associate	17	15	9	9	26	24
Assistant	12	0	13	0	25	0
Instructor	1	0	1	0	2	0
Other	0	0	0	0	0	0
<b>TOTAL</b>	<b>52</b>	<b>36</b>	<b>26</b>	<b>12</b>	<b>78</b>	<b>48</b>
<b>LISTER HILL LIBRARY OF THE HEALTH SCIENCES</b>						
Professor	0	0	1	1	1	1
Associate	2	0	5	1	7	1
Assistant	1	0	4	0	5	0
Instructor	2	0	1	0	3	0
Other	0	0	0	0	0	0
<b>TOTAL</b>	<b>5</b>	<b>0</b>	<b>11</b>	<b>2</b>	<b>16</b>	<b>2</b>
<b>MERVYN H. STERNE LIBRARY</b>						
Professor	0	0	0	0	0	0
Associate	0	0	0	0	0	0
Assistant	0	0	0	0	0	0
Instructor	0	0	0	0	0	0
Other	6	0	9	0	15	0
<b>TOTAL</b>	<b>6</b>	<b>0</b>	<b>9</b>	<b>0</b>	<b>15</b>	<b>0</b>
<b>UAB TOTAL</b>						
Professor	449	416	91	79	540	495
Associate	348	204	167	98	515	302
Assistant	348	2	249	8	597	10
Instructor	61	0	45	0	106	0
Other	8	0	10	0	18	0
<b>TOTAL</b>	<b>1,214</b>	<b>622</b>	<b>562</b>	<b>185</b>	<b>1,776</b>	<b>807</b>

\*Figures include employees with full-time regular faculty appointments.

Source: UAB Office of Human Resource Management Information Systems, as of October 2004



# HIGHEST DEGREES OF UAB FULL-TIME FACULTY\* BY SCHOOL BY RANK FALL 2004

<u>School/Unit</u>	<u>Academic Doctorate</u>	<u>Professional Doctorate</u>	<u>Master's</u>	<u>Bachelor's/ Other</u>	<u>Total</u>
<b>ARTS AND HUMANITIES</b>					
Professor	18	0	7	0	25
Associate	24	5	4	0	33
Assistant	18	6	8	0	32
Instructor	2	1	7	0	10
Other	1	0	0	0	1
TOTAL	63	12	26	0	101
<b>BUSINESS</b>					
Professor	17	2	0	0	19
Associate	14	2	3	0	19
Assistant	12	0	0	0	12
Instructor	0	0	3	0	3
Other	0	0	1	0	1
TOTAL	43	4	7	0	54
<b>DENTISTRY</b>					
Professor	4	16	0	0	20
Associate	2	17	0	0	19
Assistant	3	14	0	0	17
Instructor	0	2	0	1	3
Other	0	0	0	0	0
TOTAL	9	49	0	1	59
<b>EDUCATION</b>					
Professor	7	4	0	0	11
Associate	13	8	0	0	21
Assistant	16	2	0	0	18
Instructor	0	1	5	0	6
Other	0	0	0	0	0
TOTAL	36	15	5	0	56
<b>ENGINEERING</b>					
Professor	14	0	0	0	14
Associate	24	0	1	0	25
Assistant	16	0	1	0	17
Instructor	1	0	0	0	1
Other	0	0	0	0	0
TOTAL	55	0	2	0	57

\*Figures include employees with full-time regular faculty appointments.

## HIGHEST DEGREES OF UAB FULL-TIME FACULTY\* (CONTINUED)

<u>School/Unit</u>	<u>Academic Doctorate</u>	<u>Professional Doctorate</u>	<u>Master's</u>	<u>Bachelor's/ Other</u>	<u>Total</u>
<b>HEALTH RELATED PROFESSIONS</b>					
Professor	13	7	1	0	21
Associate	18	4	18	0	40
Assistant	11	2	12	0	25
Instructor	0	0	4	2	6
Other	0	0	0	0	0
TOTAL	42	13	35	2	92
<b>JOINT HEALTH SCIENCES</b>					
Professor	63	21	0	0	84
Associate	35	16	1	0	52
Assistant	50	13	1	0	64
Instructor	9	4	0	1	14
Other	0	0	0	0	0
TOTAL	157	54	2	1	214
<b>MEDICINE</b>					
Professor	45	188	0	0	233
Associate	40	157	1	1	199
Assistant	76	217	11	5	309
Instructor	14	17	10	4	45
Other	0	0	0	0	0
TOTAL	175	579	22	10	786
<b>NATURAL SCIENCES AND MATHEMATICS</b>					
Professor	35	0	0	0	35
Associate	23	0	0	0	23
Assistant	14	2	0	0	16
Instructor	5	0	2	0	7
Other	0	0	1	0	1
TOTAL	77	2	3	0	82
<b>NURSING</b>					
Professor	8	3	0	0	11
Associate	10	5	0	0	15
Assistant	15	3	0	0	18
Instructor	0	0	0	0	0
Other	0	0	0	0	0
TOTAL	33	11	0	0	44
<b>OPTOMETRY</b>					
Professor	10	7	0	0	17
Associate	10	7	0	0	17
Assistant	3	8	0	0	11
Instructor	0	0	0	0	0
Other	0	0	0	0	0
TOTAL	23	22	0	0	45

\*Figures include employees with full-time regular faculty appointments.

## HIGHEST DEGREES OF UAB FULL-TIME FACULTY\* (CONTINUED)

<u>School/Unit</u>	<u>Academic Doctorate</u>	<u>Professional Doctorate</u>	<u>Master's</u>	<u>Bachelor's/ Other</u>	<u>Total</u>
<b>PUBLIC HEALTH</b>					
Professor	17	6	1	0	24
Associate	15	4	0	0	19
Assistant	24	2	2	0	28
Instructor	3	1	1	1	6
Other	0	0	0	0	0
TOTAL	59	13	4	1	77
<b>SOCIAL AND BEHAVIORAL SCIENCES</b>					
Professor	25	0	0	0	25
Associate	26	0	0	0	26
Assistant	22	0	3	0	25
Instructor	1	0	1	0	2
Other	0	0	0	0	0
TOTAL	74	0	4	0	78
<b>LISTER HILL LIBRARY OF THE HEALTH SCIENCES</b>					
Professor	0	0	1	0	1
Associate	0	0	7	0	7
Assistant	0	0	5	0	5
Instructor	0	0	3	0	3
Other	0	0	0	0	0
TOTAL	0	0	16	0	16
<b>MERVYN H. STERNE LIBRARY</b>					
Professor	0	0	0	0	0
Associate	0	0	0	0	0
Assistant	0	0	0	0	0
Instructor	0	0	0	0	0
Other	1	1	13	0	15
TOTAL	1	1	13	0	15
<b>UAB TOTAL</b>					
Professor	276	254	10	0	540
Associate	254	225	35	1	515
Assistant	280	269	43	5	597
Instructor	35	26	36	9	106
Other	2	1	15	0	18
TOTAL	847	775	139	15	1,776

\*Figures include employees with full-time regular faculty appointments.

Source: UAB Office of Human Resource Management Information Systems, as of October 2004

## ENDOWED POSITIONS AT UAB

Charles A. Alford, M.D. Endowed Chair in Pediatric Infectious Diseases (2001)  
Thomas E. Andreoli Professorship in Nephrology (2001)  
J. Max Austin, Jr., M.D. Endowed Professorship in Gynecologic Oncology (2000)  
Baker-Dean Endowed Professorship in Interventional Cardiology (2000)  
George W. Barber, Jr. Foundation Professorship in Otolaryngology/Head and Neck Surgery (1993)  
Lionel M. Barger, Jr., M.D. Chair in Pediatric Cardiology (1996)  
John H. Blue Chair of General Surgery (2001)  
Mary J. Bradford Endowed Professorship in Gastroenterology (1998)  
Ben Vaughan Branscomb Chair of Medicine in Respiratory Disease (1990)  
Wallace R. Bunn Chair in Telecommunications (1992)  
C. E. Butterworth, Jr., M.D. Professorship in the Department of Nutrition Sciences (1996)  
Benjamin Monroe Carraway, M.D. Chair in Anesthesiology (1997)  
Neil E. Christopher, M.D. Endowed Professorship in Family and Community Medicine (2001)  
Ellen Gregg Shook Culverhouse Chair in Gynecologic Oncology (1998)  
Dental Alumni - Joseph F. Volker Chair of Clinical Dentistry (1982)  
Department of Radiology Visiting Professor Endowment Fund (1989)  
Arnold G. Diethelm Endowed Chair for Transplantation Surgery (2004)  
William E. Dismukes, M.D., Endowed Professorship (2002)  
Edwin M. Dixon Endowed Chair in Neonatology (2000)  
Heman E. Drummond Endowed Chair of Psychiatry (1988)  
Eminent Scholar Chair in Pulmonary Diseases (1989)  
Endowed Professorship in Nephrology Leadership (2001)  
Endowed Professorship in Polar or Marine Biology (2001)  
Endowed Professorship in Primary Care Medicine (2003)  
Endowed Professorship in Transplant Nephrology (2001)  
Edward A. Ernst, M.D. Endowed Professorship in Anesthesiology (2001)  
EyeSight Foundation of Alabama Endowed Chair of Ophthalmology (1999)  
Wayne H. and Sara Crews Finley Chair of Medical Genetics (1986)  
Charles E. Flowers, Jr. Endowed Chair of Obstetrics and Gynecology (1985)\*  
    \*converted from Professorship (1985) to Chair (2002)  
James Garber Galbraith Chair in Neurosurgery (1992)  
Simon Gelman, M.D., Ph.D. Endowed Professorship in Anesthesiology (2001)  
GeroPsychiatry Research Chair (1993)  
J. W. and Virginia Goodwin - Warren D. Blackburn, Jr. Research Chair in Rheumatology (1993)  
Jeanne and Ann Griffin Chair for Women's Cancer Research (1997)  
Nancy R. and Eugene C. Gwaltney Family Endowed Chair in Medical Research (2003)  
Alfred Habeeb Chair in Anesthesiology (1992)

## **ENDOWED POSITIONS AT UAB (CONTINUED)**

Ruth Lawson Hanson Chair of Medicine in Diabetes and Metabolism (1967)  
Joy and Bill Harbert Endowed Chair in Cancer Genetics (2001)  
Bruce Harris, Jr., M.D. Endowed Professorship in Obstetrics and Gynecology (1999)  
Elmer and Glenda Harris Endowed Chair in Cardiovascular Disease (2004)  
James Johnston Hicks Chair of Otolaryngology/Head and Neck Surgery (1989)  
S. Richardson Hill, Jr. Professorship in Endocrinology (1988)  
Basil I. Hirschowitz Endowed Chair in Gastroenterology (1996)\*  
    \*converted from Professorship (1988) to Chair (1996)  
Charles and Alice Hohenberg Professorship in Pulmonary and Critical Care Medicine (1996)  
Howard L. Holley Research Chair in Rheumatology (1987)  
Charles Byron Ireland Chair of Psychiatric Research (1973)  
Katharine Reynolds Ireland Chair of Pediatrics (1992)  
Kathy Ireland Chair in Psychiatric Research (1992)  
John S. Jemison, Jr. Visiting Professorship in the Humanities (1986)  
L. R. Jordan Chair in Health Services Administration (1988)  
Fay Fletcher Kerner Chair of Surgery (1973)  
    \*converted from Professorship (1964) to Chair (1973)  
John W. Kirklin Chair of Cardiovascular Surgery (1980)  
Robert B. Kyle Professorship and Chair in Rehabilitation Medicine (1974)  
James C. and Elizabeth T. Lee Chair in Biochemistry (1993)  
William A. Lell, M.D. – Paul N. Samuelson, M.D. Endowed Professorship in Anesthesiology (2003)  
Patrick H. Linton Professorship of Psychiatry (1987)  
Loeb Eminent Scholar Chair in Pediatrics (1992)  
Jane Knight Lowe Chair of Medicine in Rheumatology (2001)\*  
    \*converted from Professorship (1986) to Chair (2001)  
Dr. Champ Lyons Endowed Chair in General Surgery (1997)  
Jeanne V. Marks Endowed Chair in Cardiovascular Research (1999)  
Martha Ann and David L. May Endowed Chair in Cancer Research (1999)  
Charles A. McCallum Chair of Oral and Maxillofacial Surgery (1985)  
Charles H. McCauley Chair of Microbiology (1978)  
Evelyn F. McKnight Endowed Professorship for Learning and Memory in Aging (2004)  
Alice McNeal, M.D. Endowed Chair in Anesthesiology (1998)  
Gwen McWhorter Endowed Chair in Geriatric Medicine (2002)  
Nathan E. Miles Endowed Chair of Ophthalmology (1996)  
School of Nursing Endowed Chair (1997)  
John S. Odess Chair in Otolaryngology/Head and Neck Surgery (1993)  
Marie L. O'Koren Endowed Chair in Nursing (1992)  
Outstanding Clinician in Radiation Oncology Endowed Professorship (2004)

## ENDOWED POSITIONS AT UAB (CONTINUED)

A. D. Pacifico, M.D. Endowed Chair of Cardiovascular Surgery (2002)  
Emmett G. and Beverly S. Parrish Endowed Professorship (2001)  
Department of Radiology Visiting Professor Endowment Fund (1989)  
Leonard H. Robinson Endowed Chair in Pathology (1998)  
James R. Rosen Chair in Dental Research (1990)  
Merle M. Salter Chair of Radiation Oncology (1995)  
John D. Sherrill Chair of Orthopaedic Surgery (1970)  
Elesabeth Ridgely Shook Endowed Chair in Psychiatry (2001)  
J. Marion Sims Endowed Chair in Obstetrics and Gynecology (1985)  
SouthTrust Endowed Professorship in Business Administration (2004)  
Margaret Cameron Spain Chair in Obstetrics and Gynecology (1998)  
Spencer Chair in Medical Science Leadership (1992)  
Evalina B. Spencer Chair in Oncology (1994)  
Tate Jordan Thomas Professorship in Psychiatric Medicine (1994)  
Transplant Nephrology Clinical Research Professorship (2001)  
UAB Alumni and Friends Professorship in Accounting (1990)  
UAB Cardiovascular Surgical Research Chair (2004)  
    \*converted from Professorship (1980) to Chair (2004)  
Anna Lois Waters Chair of Medicine in Rheumatology (1970)  
Mary Gertrude Waters Chair of Cardiovascular Medicine (1972)  
Newman H. Waters Chair of Clinical Pharmacology (1992)  
Webb Chair in Nutrition Sciences (2001)  
Ben S. Weil Chair of Industrial Distribution (1986)  
John N. Whitaker Endowed Professorship in Neurology (2003)  
Witten-Stanley Endowed Chair in Radiology (1997)  
J. Benjamin Younger, M.D. Endowed Professorship in Reproductive Endocrinology and Infertility (2000)

## TOTAL FULLY-FUNDED ENDOWED POSITIONS

Chairs	64
Professorships	31
Combined Professorship/Chair	1
Total	96

NOTE: Date in parentheses is the year established. Lists of past and present holders of each endowed position can be found at the bottom of the sidebar on the website of the UAB Development Office (<http://main.uab.edu/show.asp?durki=1892>).

Source: Minutes, the Board of Trustees of the University of Alabama; campus records

## **UAB FACULTY AWARDS AND HONORS**

### **SPECIAL PROFESSORSHIPS AND APPOINTMENTS**

#### **Distinguished Professors**

Samuel B. Barker, Ph.D. (1976-2002)  
J. Claude Bennett, M.D. (1996-emeritus, 1996)  
Ben Vaughan Branscomb, M.D. (1989-emeritus, 1989)  
William C. Carter, Ph.D. (2004-present)  
William C. Cockerham, Ph.D. (2005-present)  
Harriet P. Dustan, M.D. (1985-emerita, 1988)  
Charles E. Flowers, Jr., M.D. (1985-emeritus, 1985)  
Walter B. Frommeyer, M.D. (1968-1979)  
Tinsley R. Harrison, M.D. (1964-1978)  
S. Richardson Hill, Jr., M.D. (1987-emeritus, 1994-2003)  
Thomas N. James, M.D. (1981-1987-emeritus, 2005)  
William J. Koopman (emeritus, 2005)  
Albert F. Lobuglio, M.D. (2005-present)  
Champ Lyons, M.D. (1964-1965)  
Charles A. McCallum, D.M.D., M.D. (1993-emeritus, 1998)  
Raymond A. Mohl, Ph.D. (2005-present)  
Jimmy D. Neill, Ph.D. (1994-emeritus, 2004)  
James A. Pittman, Jr., M.D. (1992-emeritus, 1992)  
Joseph F. Volker, D.D.S., Ph.D. (1982-1989)

#### **Distinguished Service Professors**

Joseph H. Appleton, Ph.D.; Civil Engineering (1984-emeritus, 1990)  
Milly Cowles, Ph.D.; Education (1987-emerita, 1989)  
Jay Goldman, D.Sc.; Engineering (2001-present)  
Fain A. Guthrie, Ed.D.; Education (1980-emeritus, 1988)  
George E. Passey, Ph.D.; Psychology (1985-emeritus, 1985)  
J. Dudley Pewitt, D.B.A.; Business (1990-1994)

#### **University Professors**

Frederick W. Conner, Ph.D.; Humanities (1976-emeritus, 1978)  
James B. McClintock, Ph.D.; Polar and Marine Biology (2003-present)  
Dalton E. McFarland, Ph.D.; Management (1972-emeritus, 1983)  
Henry Panion, Ph.D.; Music (2000-present)  
James Rachels, Ph.D.; Philosophy (1983-2003)  
Craig T. Ramey, Ph.D.; Psychology (1997-2002)  
Edward Taub, Ph.D.; Psychology (2000-present)

#### **University Scholars**

William F. Bridgers, M.D.; Public Health (1991-1992)  
W. Jack Duncan, Ph.D.; Management (1987-present)  
Virginia V. Hamilton, Ph.D.; History (1981-emerita, 1987)  
David E. Harrell, Ph.D.; History (1976-1981; 1985-1990)  
Jimmy W. Mays, Ph.D.; Chemistry (2001)  
David L. Sparks, Ph.D.; Psychology (1976-1981)  
James F. Tent, Ph.D.; History (1990-present)  
Yogesh K. Vohra, Ph.D.; Physics (2001-present)

Dates shown represent date of appointment and/or departure from UAB.

## UAB FACULTY AWARDS AND HONORS (CONTINUED)

### NATIONAL RECOGNITIONS

#### Fulbright Scholars

1965-67 Abdullah A. Khatri - Psychology  
1977-78 Blaine A. Brownell - American and Urban Studies  
Henry N. McCarl - Economics  
1981-82 Ruth B. LaMonte - Education  
J. Walter Mason - Environmental Health  
1982-83 Daniel R. Lesnick - History  
Eul Soo Pang - History  
1983-84 Thomas L. St. Pierre - Chemistry  
1985-86 Kathleen S. Logan - Anthropology  
James F. Mersmann - English  
Bruce P. Wheatley - Anthropology  
1986-87 W. Jack Duncan - Management  
John D. Jones - Student Affairs  
Charles W. Nance - Anthropology  
Larry G. Wharton - English  
1987-88 Ralph A. Johnson - Center for Labor Education and Research  
Mohammed A. Khaled - Nutrition Sciences  
1989-90 Thomas L. Powers - Marketing  
Frederick P. Smith - Criminal Justice  
1990-91 Richard M. Gargiulo - Special Education  
1991-92 Jane M. Christian - Anthropology  
Stephen O. Glosecki - English  
1992-93 Bruce Freeman - Anesthesiology  
1993-94 Beverly Hawk - Political Science  
Virginia D. Gauld - Student Affairs  
1994-95 Roger T. Lewis - Mathematics  
1995-96 Voytek Zubek - Political Science  
1995-97 Mary Umlauf - Nursing  
1996-97 Tee Hiatt - Health Services Administration  
1997-98 Robert A. McLean - Health Administration  
1999-00 Paul Pedersen - Education  
2002-03 Jack E. Davis - History  
2003-04 Lynda Harrison - Nursing  
2004-05 John Van Sant - History  
2004-05 Mohammad A. Khaled - Nutrition Sciences

#### National Academy of Sciences

1988 Max D. Cooper, M.D. - Pediatrics

Source: Minutes, the Board of Trustees of the University of Alabama; campus records



## UAB FACULTY AWARDS AND HONORS (CONTINUED)

### DISTINGUISHED FACULTY LECTURERS

1964	Dr. Tinsley R. Harrison, Professor of Medicine
1965	Dr. Champ Lyons, Professor and Chairman, Department of Medicine
1966	Dr. Joseph F. Volker, Vice President for Health Affairs
1967	Dr. Thomas E. Hunt, Professor of Anatomy
1968	Dr. Samuel B. Barker, Director of Graduate Studies
1969	Dr. Howard L. Holley, Professor of Medicine
1970	Dr. Sidney B. Finn, Professor of Dentistry
1971	Dr. Walter B. Frommeyer, Distinguished Professor, University of Alabama
1972	Dr. Charles A. McCallum, Dean, School of Dentistry
1973	Dr. J. Garber Galbraith, Professor of Surgery
1974	Dr. Elizabeth C. Crosby, Professor Emerita of Anatomy
1975	Dr. John W. Kirklin, Fay Fletcher Kerner Professor and Chairman, Department of Surgery
1976	Dr. S. Richardson Hill, Jr., Vice President for Health Affairs
1977	Dr. Thomas N. James, Mary Gertrude Waters Professor of Cardiology and Chairman, Department of Medicine
1978	Dr. Marie L. O'Koren, Dean, School of Nursing
1979	Dr. J. Claude Bennett, Professor and Chairman, Department of Microbiology
1980	Dr. John R. Durant, Director, Comprehensive Cancer Center
1981	Dr. James A. Pittman, Jr., Dean, School of Medicine
1982	Dr. Max D. Cooper, Professor of Pediatrics
1983	Drs. Wayne and Sara Finley, Director and Co-Director, Laboratory of Medical Genetics
1984	Dr. Harriet P. Dustan, Director, Cardiovascular Research and Training Center
1985	Dr. Leonard H. Robinson, Dean, School of Dentistry
1986	Dr. C. E. Butterworth, Professor and Chairman, Department of Nutrition Sciences
1987	Dr. Dan W. Urry, Director, Laboratory of Molecular Biophysics
1988	Dr. Basil I. Hirschowitz, Professor of Medicine
1989	Dr. Harold M. Fullmer, Professor Emeritus of Pathology
1990	Dr. Juan M. Navia, Dean, School of Public Health
1991	Dr. Lionel M. Barger, Jr., Professor Emeritus of Pediatric Cardiology
1992	Dr. Jiri F. Mestecky, Professor of Microbiology
1993	Dr. Charles E. Bugg, Director, Center for Macromolecular Crystallography
1994	Dr. Arnold G. Diethelm, Fay Fletcher Kerner Professor and Chair, Department of Surgery
1995	Dr. Albert F. LoBuglio, Director, UAB Cancer Center
1996	Dr. Gail H. Cassell, Professor and Chair, Department of Microbiology
1997	Dr. Suzanne Oparil, Professor of Medicine
1998	Dr. Richard J. Whitley, Professor of Pediatrics, Microbiology, and Medicine
1999	Dr. Albert D. Pacifico, John W. Kirklin Professor of Cardiovascular Surgery
2000	Dr. Larry J. DeLucas, Director, UAB Center for Biophysical Sciences and Engineering
2001	Dr. Robert L. Goldenberg, Charles E. Flowers Professor of Obstetrics and Gynecology
2002	Dr. Eric Hunter, Director, Center for AIDS Research
2003	Dr. J. Russell Lindsey, Professor Emeritus of Genomics and Pathobiology
2004	Dr. William J. Koopman, Professor and Chairman, Department of Medicine

Academic or administrative appointment shown for each lecturer is the primary appointment held at the time of selection as Distinguished Faculty Lecturer.

Source: UAB Public Relations and Marketing

## UAB FACULTY AWARDS AND HONORS (CONTINUED)

### ELLEN GREGG INGALLS / NATIONAL ALUMNI SOCIETY AWARD FOR EXCELLENCE IN CLASSROOM TEACHING AT UAB

1969-70	Dr. Hubert H. Harper, Associate Professor of English and Classical Languages
1970-71	Ms. Charlotte Gafford, Instructor in English
1971-72	Dr. Hubert H. Harper, Associate Professor of English and Classical Languages
1972-73	Mr. James Dupuy, Instructor in Mathematics
1973-74	Dr. Robert L. Penny, Assistant Professor of English
1974-75	Dr. Glenda Elliott, Assistant Professor of Education
1975-76	Dr. John S. Coley, Professor of English
1976-77	Dr. Roberta A. Long, Associate Professor of Education
1977-78	Dr. Maryann M. Manning, Associate Professor of Education
1978-79	Dr. Gary L. Manning, Associate Professor of Education
1979-80	Dr. Carl E. McFarland, Assistant Professor of Psychology
1980-81	Mr. James H. Hawk, Lecturer in Physics
1981-82	Dr. Loudell Ellis-Robinson, Professor of Accounting
1982-83	Ms. Lillian Naumann, Instructor in Biology
1983-84	Dr. David A. Conner, Professor and Chair of Electrical Engineering
1984-85	Dr. Lee R. Summerlin II, Professor of Chemistry
1985-86	Dr. James F. Mersmann, Associate Professor of English
1986-87	Mr. Ollie S. Powers III, Assistant Professor of Accounting
1987-88	Dr. Ada W. Long, Associate Professor of English
1988-89	Dr. J. Barry Andrews, Professor of Materials Science and Engineering
1989-90	Dr. Michael R. Bowers, Assistant Professor of Marketing
1990-91	Dr. Stephen O. Glosecki, Associate Professor of English
1991-92	Dr. Thomas P. Edmonds, Professor of Accounting
1992-93	Dr. Fouad H. Fouad, Associate Professor of Civil Engineering
1993-94	Dr. Gregory E. Pence, Professor of Philosophy
1994-95	Ms. Virginia S. Volker, Instructor in Biology
1995-96	Ms. Judy Taylor, Assistant Professor in Nursing
1996-97	Dr. Colin J. Davis, Associate Professor of History
1997-98	Dr. Carl E. McFarland, Jr., Professor and Chair of Psychology
1998-99	Dr. Anne M. Cusic, Instructor in Biology
1999-00	Dr. Jerry T. Aldridge, Professor of Education
2000-01	Dr. Joe K. Gerald, Assistant Professor in Surgical Physician Assistant Program
2001-02	Dr. Maryann M. Manning, Professor of Education
2002-03	Dr. J. Barry Andrews, Professor and Chair of Materials Science and Engineering
2003-04	Mr. Ollie S. Powers III, Associate Professor of Accounting
2004-05	Dr. Ellen B. Buckner, Associate Professor of Nursing

Date shown is the academic year covered by the award. Academic appointment shown for each award winner is the primary appointment held at the time of the award.

Source: UAB Public Relations and Marketing

## UAB FACULTY AWARDS AND HONORS (CONTINUED)

### CAROLYN P. AND CHARLES W. IRELAND PRIZE FOR SCHOLARLY DISTINCTION

1991	Dr. Joan Lorden, Psychology
1992	Dr. James Rachels, Philosophy
1993	Dr. James McClintock, Biology
1994	Dr. James Tent, History
1995	Dr. Roger Lewis, Mathematics
1996	Dr. Henry Panion, Music
1997	Dr. Edward Taub, Psychology
1998	Dr. Harold Kincaid, Philosophy
1999	Dr. Dennis R. Covington, English
2000	Dr. Craig T. Ramey, Civitan International Research Center
2001	Dr. Jimmy W. Mays, Chemistry
2002	Dr. William C. Carter, Foreign Languages and Literature
2003	Dr. Yogesh K. Vohra, Physics
2004	Dr. William C. Cockerham, Sociology
2005	Dr. Raymond A. Mohl, History

Source: Office of the Dean of the Graduate School

# FINANCIAL & PHYSICAL RESOURCES



## SELECTED UAB FINANCIAL HIGHLIGHTS

### FY 1999-2000 through FY 2003-04

<u>Item</u>	<u>1999-2000</u>	<u>2000-01</u>	<u>2001-02<sup>3</sup></u>	<u>2002-03<sup>3</sup></u>	<u>2003-04<sup>3,4</sup></u>
Tuition and Fees (gross)	\$61,946,058	\$70,428,564	\$66,485,174	74,890,719	\$83,847,789
State Appropriations <sup>1</sup>	208,117,051	206,982,918	213,310,617	218,671,755	219,883,401
Gifts, Grants & Contracts <sup>2</sup>	279,898,751	309,447,694	337,904,590	366,587,458	402,665,071
Hospital Sales & Services	586,684,031	638,461,233	660,370,734	689,521,610	753,571,012
Total Revenues (gross)	1,239,141,485	1,350,848,577	1,380,648,494	1,471,941,604	1,643,952,958
Total Assets	2,062,655,435	2,108,147,165	2,240,474,664	2,484,488,974	2,626,326,155
Instructional Expenditures	153,978,155	173,492,319	202,521,693	210,134,871	209,831,103
Hospital Expenditures	365,327,824	591,057,157	618,702,741	651,800,227	708,162,329 <sup>5</sup>
Auxiliary Expenditures	23,045,795	26,722,207	22,959,541	23,552,767	24,301,526

NOTE: Financial data are based on the published financial statement for that year and do not necessarily reflect subsequent changes in accounting practices.

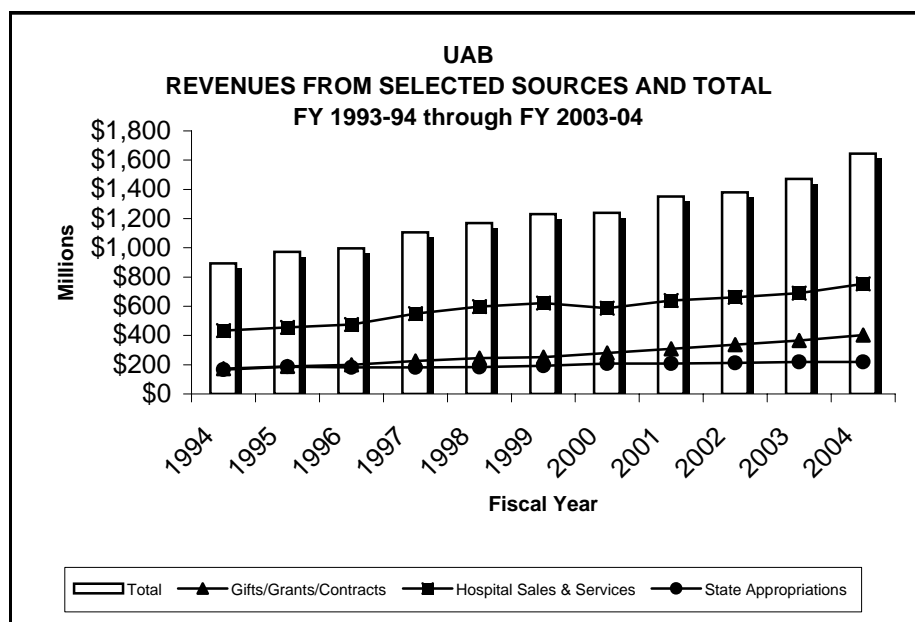
<sup>1</sup>Includes state appropriations for educational and general (E&G), hospital, and auxiliary enterprises.

<sup>2</sup>Includes indirect cost recovery.

<sup>3</sup>Data for FY 2001-02 and thereafter are presented in a format equivalent to prior years despite financial statement format changes required by GASB 35, implemented during FY 2001-02.

<sup>4</sup>2003-04 data includes Triton Health Systems, LLC.

<sup>5</sup>Includes bad debt expense of \$100,901,886.



Source: Published UAB Financial Statements, 1997-98 Financial Statements excluding UAB Walker College, and the Office of the Associate Vice President for Financial Affairs

**UAB FINANCIAL PROFILE  
FY 2003-04 ACTUAL**

	<u>University</u>	<u>Hospital</u>	<u>Total</u>
<b>Operating Revenues</b>			
Gross Tuition and Fees	\$ 83,847,789		\$ 83,847,789
Less: scholarship allowance	(19,511,961)		(19,511,961)
Less: bad debt expense	(1,386,930)		(1,386,930)
Net Tuition and Fees	62,948,898		62,948,898
Grants and contracts			
Federal	294,608,395		294,608,395
State	2,911,291		2,911,291
Local	2,233,073		2,233,073
Private	39,824,290		39,824,290
Sales and services:			
Educational activities	44,370,073		44,370,073
Hospital, net of bad debt expense of \$100,901,886		\$ 652,669,126	652,669,126
Auxiliary enterprises, net of scholarship allowance of \$613,984	19,057,783		19,057,783
Other operating revenues	181,039,931	346,182	181,386,113
Total operating revenues	\$ 646,993,734	\$ 653,015,308	\$ 1,300,009,042
<b>Operating Expenses</b>			
Salaries, wages and benefits	\$ 500,063,290	\$ 320,831,263	\$ 820,894,553
Supplies and services	333,275,725	286,429,180	619,704,905
Depreciation	69,182,483	29,366,929	98,549,412
Scholarships and fellowships	19,636,901		19,636,901
Total operating expenses	\$ 922,158,399	\$ 636,627,372	\$ 1,558,785,771
Income (loss) before other nonoperating revenues, expenses, gains and losses	\$ (275,164,665)	\$ 16,387,936	\$ (258,776,729)
<b>Nonoperating Revenues (Expenses)</b>			
State appropriations	\$ 190,637,434	\$ 29,245,967	\$ 219,883,401
Federal grants and contracts	17,129,894		17,129,894
State grants and contracts	58,592		58,592
Private grants and contracts	90,927		90,927
Gifts	33,831,043	43,256	33,874,299
Investment (loss) income	61,748,944	37,422,403	99,171,347
Interest expense	(6,742,899)	(3,461,683)	(10,204,582)
Gain (loss) on asset disposition	(1,756,283)	(572,653)	(2,328,936)
Net other nonoperating revenue (expense)	2,949,330	746,139	3,695,469
Net nonoperating revenues	\$ 297,946,982	\$ 63,423,429	\$ 361,370,411
Other Changes in Net Assets			
State funds-capital	\$ 5,233,490		\$ 5,233,490
Capital grants and contracts	10,022,703		10,022,703
Capital gifts	1,911,607		1,911,607
Endowment gifts	9,424,416		9,424,416
Net nonoperating revenues/other changes	\$ 324,539,198	\$ 63,423,429	\$ 387,962,627
Increase (decrease) in net assets prior to intergovernmental transfers	\$ 49,374,533	\$ 79,811,365	\$ 129,185,898
Intergovernmental transfers	27,641,720	(27,641,720)	-
Increase in net assets	<u>\$ 77,016,253</u>	<u>\$ 52,169,645</u>	<u>\$ 129,185,898</u>

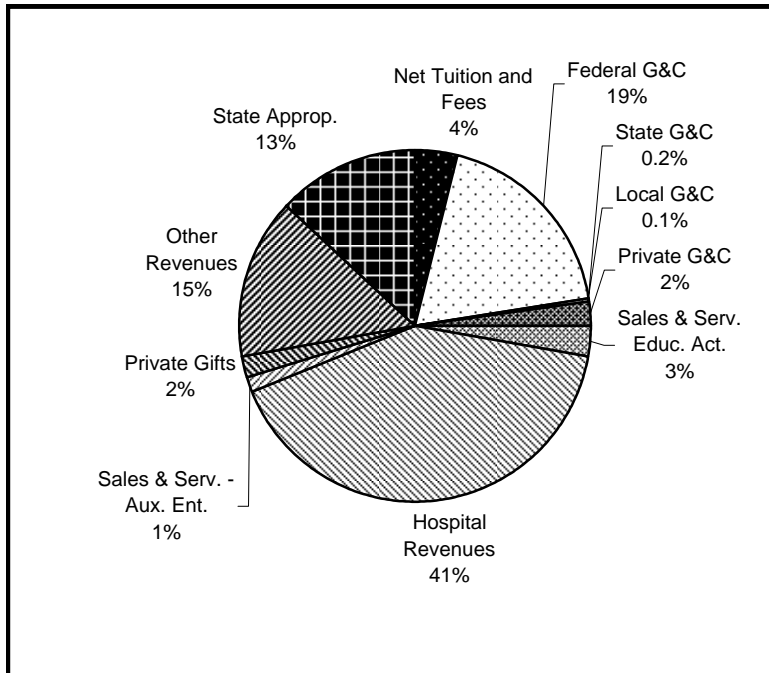
Note: Financial profile is presented in format defined by GASB 35, implemented in fiscal year 2002.

Source: Financial Affairs

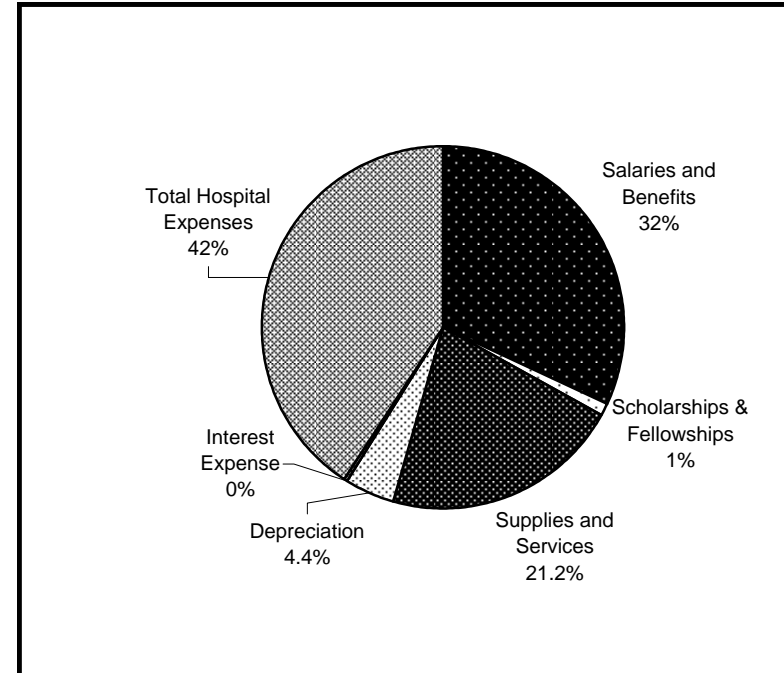
# UAB FINANCIAL PROFILE

## FY 2003-04 ACTUAL

### Revenues



### Expenses



#### NOTES:

Hospital revenues include sales and services revenue and other operating revenues, other nonoperating revenues, and investment income.

Other revenues include non-hospital other operating revenues, other nonoperating revenues, and investment income (loss).

Capital and endowment activity is not included in the above analysis.

Total hospital expenses include salaries and benefits, supplies and services, depreciation, and interest expense.

Financial data is presented in a format defined by GASB 35, implemented in fiscal year 2002.

Source: Financial Affairs

## UAB FINANCIAL PROFILE FY 2004-05 BUDGETED

<b><u>Revenues:</u></b>	<b><u>Original Budget FY 2004-05</u></b>
Tuition and Fees	\$91,047,000
State Appropriations (educational and general)	196,112,000
Federal Grants and Contracts	316,967,000
State Grants and Contracts	3,103,000
Local Grants and Contracts	2,166,000
Nongovernmental Grants & Contracts	43,976,000
Gifts	22,594,000
Investment Income	11,000,000
Sales and Services of Educational Activities	45,757,000
Hospital - Sales and Services and Other	809,502,932
Hospital - State Appropriations	30,121,020
Auxiliary Enterprises - Sales and Services	23,647,000
Other Sources	51,754,000
	<hr/>
TOTAL REVENUES	\$1,647,746,952

### **Expenditures, Transfers, and Reserves:**

Educational and General:	
Instruction	\$227,883,000
Research	231,312,000
Public Service	60,476,000
Academic Support	70,462,000
Student Services	16,585,000
Institutional Support	71,926,000
Operation and Maintenance of Plant	48,167,000
Scholarships and Fellowships	39,645,000
Subtotal - Educational and General Expenditures	\$766,456,000
Mandatory Transfers	20,874,000
Total - Educational and General and Mandatory Transfers	\$787,330,000
	<hr/>
Hospital Expenditures and Mandatory Transfers	\$789,442,657
Auxiliary Enterprises and Mandatory Transfers	28,567,000
Other Transfers and Reserves	42,407,295
	<hr/>
TOTAL EXPENDITURES, TRANSFERS, AND RESERVES	\$1,647,746,952

Source: UAB Original Operating Budget for FY 2004-05.



### UAB PRIMARY PROGRAM EXPENDITURES for FY 1998-99 through FY 2003-04

Fiscal Year	Instructional Expenditures		Research Expenditures		Public Service Expenditures		Total E&G Expenditures <sup>1</sup>	Composite Total Primary Prog. Expend.	
	\$ Amount	% of E&G	\$ Amount	% of E&G	\$ Amount	% of E&G		\$ Amount	% of E&G
1998-99	\$146,361,431	26.60%	\$171,831,840	31.23%	\$73,287,739	13.32%	\$550,266,549	\$391,481,010	71.14%
1999-2000	153,978,155	25.96%	175,667,037	29.61%	92,304,656	15.56%	593,225,526	421,949,848	71.13%
2000-01	173,492,319	27.38%	195,705,928	30.89%	93,257,740	14.72%	633,545,786	462,455,987	72.99%
2001-02 <sup>2</sup>	202,521,693	33.11%	184,106,519	30.10%	52,304,322	8.55%	611,606,260	438,932,534	71.77%
2002-03	210,134,871	30.96%	207,502,998	30.57%	54,680,275	8.06%	678,717,025	472,318,144	69.59%
2003-04 <sup>3</sup>	209,831,103	25.28%	233,492,745	28.13%	174,650,614	21.04%	830,061,320	617,974,462	74.45%
TOTAL	\$1,096,319,572	28.13%	\$1,168,307,067	29.98%	\$540,485,346	13.87%	\$3,897,422,466	\$2,805,111,985	71.97%

### UAB ADMINISTRATIVE EXPENDITURES for FY 1998-99 through FY 2003-04

Fiscal Year	Institutional Support Expenditures		Student Services Expenditures		Operations & Maintenance of Plant Expenditures		Total E&G Expenditures <sup>1</sup>	Composite Total Administrative Expenditures	
	\$ Amount	% of E&G	\$ Amount	% of E&G	\$ Amount	% of E&G		\$ Amount	% of E&G
1998-99	\$58,629,925	10.65%	\$11,321,870	2.06%	\$32,786,200	5.96%	\$550,266,549	\$102,737,995	18.67%
1999-2000	60,127,906	10.14%	12,155,167	2.05%	36,676,468	6.18%	593,225,526	108,959,541	18.37%
2000-01	42,984,478	6.78%	14,367,938	2.27%	35,766,527	5.65%	633,545,786	93,118,943	14.70%
2001-02 <sup>2</sup>	51,099,737	8.36%	14,530,143	2.38%	37,779,483	6.18%	611,606,260	103,409,363	16.91%
2002-03	59,344,378	8.74%	15,557,813	2.29%	47,523,761	7.00%	678,717,025	122,425,952	18.04%
2003-04 <sup>3</sup>	59,677,092	7.19%	16,807,745	2.02%	48,186,376	5.81%	830,061,320	124,671,213	15.02%
TOTAL	\$331,863,516	8.51%	\$84,740,676	2.17%	\$238,718,815	6.13%	\$3,897,422,466	\$655,323,007	16.81%

NOTE: Financial data are based on the published financial statement for that year and do not necessarily reflect subsequent changes in accounting practices.

<sup>1</sup>Total E&G Expenditures do not include mandatory transfers.

<sup>2</sup>FY 2001-02 data and thereafter reflect the format defined by GASB 35 implemented in FY 2002.

<sup>3</sup>FY 2003-04 data includes Triton Health Systems, LLC.

Source: Published UAB Financial Statements

**STATE FUNDING  
FROM THE EDUCATIONAL TRUST FUND  
AS ENACTED FY 1967-68 TO FY 2004-05**

<b>Fiscal Year</b>	<b>UAB Request</b>	<b>ACHE Recommendation</b>	<b>Governor's Recommendation</b>	<b>Original Appropriation</b> <sup>1</sup>
2004-05 <sup>11</sup>	\$245,917,325	\$238,250,286	\$222,868,737	\$225,966,057 <sup>12</sup>
2003-04 <sup>11</sup>	250,965,529	227,114,415	219,688,766	219,773,186 <sup>12</sup>
2002-03 <sup>11</sup>	245,322,089	227,260,481	219,019,853	218,230,895 <sup>12</sup>
2001-02 <sup>11</sup>	256,627,315	231,907,993	205,919,985	213,335,122 <sup>12</sup>
2000-01 <sup>11</sup>	228,226,882	224,484,654	219,532,486	219,912,486 <sup>12</sup>
1999-2000 <sup>11</sup>	220,240,493	212,400,799	203,248,005	207,478,983
1998-99 <sup>11</sup>	217,954,281	198,359,499	191,112,548	192,564,684
1997-98	197,376,459	195,086,299	182,987,673	183,984,625
1996-97 <sup>10</sup>	216,099,194	191,571,618	159,292,757	182,755,980
1995-96 <sup>8</sup>	196,784,010	179,743,681	145,338,599	182,655,980 <sup>7,9</sup>
1994-95	174,086,656	170,217,281	163,068,408	165,184,208 <sup>7</sup>
1993-94	174,374,421	156,690,187	<sup>2</sup>	146,291,307 <sup>7</sup>
1992-93 <sup>6</sup>	173,166,984	144,241,231	<sup>2</sup>	136,230,017
1991-92 <sup>5</sup>	157,091,034	137,635,377	<sup>2</sup>	140,081,381
1990-91	148,171,566	136,489,897	<sup>2</sup>	128,399,290
1989-90	136,927,929	126,808,097	<sup>2</sup>	115,759,036
1988-89 <sup>4</sup>	127,513,440	113,630,997	<sup>2</sup>	117,179,843
1987-88	122,426,275	102,672,967	97,632,142	98,635,173
1986-87	139,973,045	114,677,669	96,662,640	97,162,640
1985-86	119,191,528	106,927,000	105,138,359	107,388,359
1984-85	101,242,132	93,758,000	86,625,930	87,275,930
1983-84	99,579,000	93,071,000	70,272,751	70,701,053
1982-83	108,721,564	87,329,341	69,952,098	69,676,355
1981-82	104,673,576	83,704,000	62,172,442	63,975,600
1980-81	97,723,505	84,563,800	67,950,000	68,350,000
1979-80	98,497,422	75,784,800	59,970,512	60,170,512
1978-79	79,541,318	62,707,368	61,159,512	59,970,512
1977-78	60,757,369	52,747,352	50,946,789	47,707,789
1976-77	59,314,197	41,144,509	34,093,400	37,057,200
1975-76	36,357,498	30,636,318	34,093,400	38,443,400
1974-75	28,249,988	25,702,448	23,839,507	25,101,220

## STATE FUNDING (CONTINUED)

<b>Fiscal Year</b>	<b>UAB Request</b>	<b>ACHE Recommendation</b>	<b>Governor's Recommendation</b>	<b>Original Appropriation</b>
1973-74	25,336,139	23,399,914	21,742,525	20,403,000
1972-73	27,432,974	<sup>3</sup>	13,035,704	14,673,988
1971-72	22,330,398	-	13,035,704	12,583,000
1970-71	26,371,000	-	10,327,647	8,958,000
1969-70	19,565,000	-	9,567,217	8,095,000
1968-69	9,863,016	-	5,514,236	7,192,342
1967-68	8,940,424	-	5,514,236	5,720,000

<sup>1</sup> Appropriations are shown as originally enacted. Budgets have been prorated as follows: 1978-79 - 2.9811%; 1979-80 - 6.1406%; 1980-81 - 3.568%; 1985-86 - 4.1233%; 1990-91 - 6.5%; 1991-92 - 3%, 2000-01 - 6.2%. In FY 1992-93, UAB received supplemental appropriations totalling \$4,351,070. In FY 2001-02, the appropriation was adjusted to \$212,869,757.

<sup>2</sup> The Governor's Recommendation contained one amount for the University of Alabama System.

<sup>3</sup> The Alabama Commission on Higher Education made its first recommendation in the 1973-75 biennium.

<sup>4</sup> Beginning in FY 1988-89, figures include funding for Special Mental Health. Prior to FY 1988-89, funding for Special Mental Health was allocated separately. Since ACHE does not make a recommendation for Special Mental Health funding, the prior year's appropriation is substituted as the recommendation.

<sup>5</sup> Original Appropriation amount includes FICA. FICA was not included in UAB's request or ACHE's recommendation.

<sup>6</sup> FICA is included in all figures from FY 1992-93 forward.

<sup>7</sup> In FY 1993-94, UAB also received \$100,000 for minority business recruitment and \$300,000 for the Beville Center for Biotechnology. In FY 1994-95 and FY 1995-96, UAB received \$350,000 for the Beville Center.

<sup>8</sup> From FY 1995-96 to FY 1998-99, data include UAB Walker College where appropriate.

<sup>9</sup> Original appropriation includes teachers retirement of \$29,763,321 which was directly appropriated to UAB.

<sup>10</sup> Beginning in FY 1996-97, figures include funding for teachers retirement. Since ACHE did not make a recommendation for teachers' retirement funding in FY 1996-97, the prior year's appropriation is substituted as the recommendation.

<sup>11</sup> In FY 1998-99 and FY 1999-00, UAB also received \$348,735 to fund a teacher in-service center in the School of Education. In FY 2000, the amount was increased to \$351,606. Beginning in FY 2002, teacher in-service centers were funded through the State Department of Education.

<sup>12</sup> UAB also received funding for line items for the Cystic Fibrosis Center (\$200,000) and the Holmes Brain Tumor Research Center (\$200,000) in FY 2000-01. In FY 2001-02 and FY 2002-03, funding for both lines were reduced to \$178,220, and UAB received \$84,420 for the emergency medicine residency program. In FY 2003-04, the lines were cut to \$44,555 and emergency medicine received \$21,105. In FY 2004-05, all funding for these special lines (Cystic Fibrosis Center, Holmes Brain Tumor Research Center, and the Emergency Medicine Residency Program) was cut.

Source: Alabama Commission on Higher Education Unified Budget Recommendations

**UAB CURRENT FUNDS RESTRICTED RESEARCH EXPENDITURES  
FY ENDING SEPTEMBER 30**

	<u>1998-99</u>	<u>1999-2000</u>	<u>2000-01</u>	<u>2001-02</u>	<u>2002-03</u>
Arts & Humanities					
Federal	-	-	-	-	-
Other	-	-	-	-	-
Total	<u>-</u>	<u>-</u>	<u>-</u>	<u>-</u>	<u>-</u>
Business					
Federal	\$444,649	\$437,222	\$5,939	-	-
Other	-	-	-	-	-
Total	<u>\$444,649</u>	<u>\$437,222</u>	<u>\$5,939</u>	<u>-</u>	<u>-</u>
Dentistry					
Federal	2,189,814	1,228,185	1,223,026	898,409	863,692
Other	667,898	392,981	581,260	487,212	368,287
Total	<u>2,857,711</u>	<u>1,621,166</u>	<u>1,804,286</u>	<u>1,385,621</u>	<u>1,231,979</u>
Education					
Federal	475,552	388,420	461	-	44,264
Other	56,269	10,232	10,520	5,114	18,709
Total	<u>531,820</u>	<u>398,652</u>	<u>10,981</u>	<u>5,114</u>	<u>62,973</u>
Engineering					
Federal	1,910,222	1,885,407	2,236,820	2,812,559	5,233,925
Other	1,124,174	1,460,988	1,413,912	1,112,125	601,258
Total	<u>3,034,396</u>	<u>3,346,395</u>	<u>3,650,732</u>	<u>3,924,684</u>	<u>5,835,183</u>
Health Related Professions*					
Federal	2,987,195	1,730,422	2,251,345	2,484,724	2,585,956
Other	406,997	238,102	164,283	64,013	93,181
Total	<u>3,394,192</u>	<u>1,968,524</u>	<u>2,415,628</u>	<u>2,548,737</u>	<u>2,679,136</u>
Joint Health					
Federal	23,633,095	26,935,994	29,309,210	32,951,525	37,910,736
Other	4,283,372	4,906,998	4,700,885	4,504,989	3,941,323
Total	<u>27,916,467</u>	<u>31,842,992</u>	<u>34,010,095</u>	<u>37,456,514</u>	<u>41,852,059</u>
Medicine					
Federal	66,706,969	74,688,052	82,901,427	93,351,653	104,755,824
Other	27,792,549	17,767,292	18,943,046	16,002,273	15,114,625
Total	<u>94,499,518</u>	<u>92,455,344</u>	<u>101,844,473</u>	<u>109,353,925</u>	<u>119,870,449</u>
Natural Sciences & Mathematics					
Federal	2,292,593	2,410,927	2,459,507	1,900,946	2,165,947
Other	336,227	275,203	502,727	442,255	321,267
Total	<u>2,628,821</u>	<u>2,686,130</u>	<u>2,962,233</u>	<u>2,343,201</u>	<u>2,487,214</u>

## CURRENT FUNDS RESTRICTED RESEARCH EXPENDITURES (CONTINUED)

	<u>1998-99</u>	<u>1999-2000</u>	<u>2000-01</u>	<u>2001-02</u>	<u>2002-03</u>
Nursing					
Federal	289,262	436,432	565,818	610,239	1,050,146
Other	<u>33,946</u>	<u>14,477</u>	<u>32,816</u>	<u>44,481</u>	<u>78,787</u>
Total	323,208	450,909	598,634	654,720	1,128,934
Other**					
Federal	2,263,304	1,625,043	762,024	353,558	202,386
Other	<u>584,299</u>	<u>561,792</u>	<u>127,920</u>	<u>265,272</u>	<u>252,674</u>
Total	2,847,603	2,186,835	889,944	618,830	455,061
Optometry					
Federal	12,067,283	10,697,254	13,350,071	13,497,806	10,183,440
Other	<u>1,062,418</u>	<u>928,758</u>	<u>1,257,180</u>	<u>969,443</u>	<u>887,600</u>
Total	13,129,701	11,626,012	14,607,251	14,467,250	11,071,040
Public Health					
Federal	4,893,682	6,704,950	7,676,867	8,086,863	13,310,105
Other	<u>950,474</u>	<u>872,185</u>	<u>1,609,018</u>	<u>1,510,803</u>	<u>1,281,162</u>
Total	5,844,157	7,577,134	9,285,886	9,597,666	14,591,267
Social & Behavioral Sciences					
Federal	2,325,830	2,412,283	3,467,736	4,433,048	5,189,695
Other	<u>303,652</u>	<u>261,524</u>	<u>283,428</u>	<u>164,701</u>	<u>214,129</u>
Total	2,629,482	2,673,807	3,751,165	4,597,749	5,403,824
TOTAL UAB***					
Federal	122,479,450	131,580,591	146,210,251	161,381,330	183,496,116
Other	<u>37,602,276</u>	<u>27,690,530</u>	<u>29,626,996</u>	<u>25,572,682</u>	<u>23,173,002</u>
Total	<u>\$160,081,726</u>	<u>\$159,271,121</u>	<u>\$175,837,247</u>	<u>\$186,954,011</u>	<u>\$206,669,118</u>

\* Includes Nutrition Sciences.

\*\* Includes Central Administration, The Graduate School, Provost, UAB Hospital, UAB Health System, and Unclassified.

\*\*\* Excludes mandatory cost sharing and indirect costs.

Source: Grants and Contracts Accounting

**SUMMARY OF ACTIVE UAB GRANTS AND CONTRACTS AWARDED  
AS OF SEPTEMBER 1, 2004**

	<b>Federal</b>	<b>Industrial</b>	<b>Other Non-Federal</b>	<b>Total</b>	<b>Percent of Total</b>
Arts and Humanities	\$0	\$0	\$3,000	\$3,000	0.0%
Business	1,871,638	0	28,750	1,900,388	0.4%
Dentistry	2,359,322	309,570	52,447	2,721,339	0.6%
Education	3,122,997	0	2,082,738	5,205,735	1.1%
Engineering	10,113,359	672,870	1,368,388	12,154,617	2.6%
Health Related Professions	7,585,092	757,304	254,754	8,597,150	1.9%
Joint Health Sciences	92,908,906	1,250,354	4,846,542	99,005,802	21.5%
Medicine	149,716,498	89,118,571	27,678,932	266,514,001	57.9%
Natural Sciences and Mathematics	6,563,271	116,752	575,606	7,255,629	1.6%
Nursing	2,632,903	2,814	316,000	2,951,717	0.6%
Optometry	12,568,933	76,912	1,356,437	14,002,282	3.0%
Public Health	18,995,140	375,652	8,822,385	28,193,177	6.1%
Social and Behavioral Sciences	5,865,265	0	877,346	6,742,611	1.5%
Graduate School	701,471	0	0	701,471	0.2%
Lister Hill Library	1,000	0	0	1,000	0.0%
Central Administration	3,391,032	10,000	1,237,654	4,638,686	1.0%
<b>UAB TOTAL</b>	<b>\$318,396,827</b>	<b>\$92,690,799</b>	<b>\$49,500,979</b>	<b>\$460,588,605</b>	<b>100.0%</b>
<b>Percent of Total</b>	<b>69.1%</b>	<b>20.1%</b>	<b>10.7%</b>	<b>100.0%</b>	

NOTE: These data were generated from the R/SIS grants and contracts computer system.

Source: Office of Grants and Contracts Administration

**UAB ACTIVE GRANTS AND CONTRACTS AWARDED  
1990 - 2004**

<b>Year</b> <sup>1</sup>	<b>Federal Research</b>	<b>Federal Training</b>	<b>Federal Other</b>	<b>Non- Federal</b>	<b>Total</b>
1990	\$73,362,110	\$6,464,429	\$1,204,459	\$18,821,860	\$99,852,858
1991	79,367,375	7,719,628	2,350,708	22,340,919	111,778,630
1992	90,849,191	9,091,310	1,451,554	24,904,183	126,296,238
1993	104,922,402	10,731,930	1,677,795	33,079,580	150,411,707
		<b>Federal</b>	<b>Industrial</b>	<b>Other Non-Federal</b>	<b>Total</b>
1994 <sup>2</sup>		\$128,092,675	\$25,877,303	\$13,576,555	\$167,546,533
1995		139,044,944	34,372,024	19,879,986	193,296,954
1996		149,592,930	37,989,814	20,049,412	207,632,156
1997		179,982,530	44,535,185	23,019,763	247,537,478
1998		187,145,868	45,896,242	25,173,600	258,215,710
1999		213,798,343	46,249,907	26,902,532	286,950,782
2000		222,292,181	46,310,557	35,851,258	304,453,996
2001		236,784,861	54,382,778	34,228,955	325,396,594
2002		236,819,220	54,953,475	34,642,816	326,415,511
2003		288,646,236	59,208,668	43,890,019	391,744,923
2004		318,396,827	92,690,799	49,500,979	460,588,605

<sup>1</sup>Data for 1989-1993 as of July 15.

<sup>2</sup>Data since 1994 as of September 1. Beginning in 1994, data were generated from the R/SIS grants and contracts computer system.

Source: Office of Grants and Contracts Administration

## UAB BUILDING SUMMARY FALL 2004

<b><u>Building Name</u></b>	<b><u>Gross Square Footage</u></b>	<b><u>Construction Completed or Acquired*</u></b>
Administration Building	195,307	1993 *
Administration Building Parking Deck	130,755	1993 *
Alys Robinson Stephens Performing Arts Center	114,745	1996
Alys Robinson Stephens Performing Arts Center Addition	1,931	2004
Arlington Business Center	14,027	1990 (R)
Arts Annex	5,766	1997 *
Bartow Arena	166,740	1988
Bartow Arena Office Towers	18,988	1992
Bell Building	46,189	1955
Bessemer Substance Abuse Center	4,783	1996 (R)
Best Western Inn - Medical Center	44,888	1987 * (L)
Bevill Biomedical Sciences Research Building	223,822	1993
Biomedical Research Building	96,598	2002
Birmingham Regional Emergency Medical Services (BREMS)	4,168	1986 *
Bishop Building	21,072	1961
Blount Hall (Student Residence - Private)	189,728	2001
Blount Hall Parking Deck	62,706	2001
Boshell Diabetes Education and Research Building	128,545	1973
Bridges (Enclosed)	38,437	NA
Burleson Building	9,642	1988 *
Business and Engineering Complex	138,933	1983
Callahan Eye Foundation Hospital	38,063	1988 (R)
Camp Hall (Student Residence)	156,760	1980
Campbell Hall	103,255	1978
Campbell Hall 3rd and 4th Floor Expansion	101,898	1991
Campus Services Facility	6,940	1990 *
Cancer Research Center	38,075	1982
Center Biophysical Sciences and Engineering	58,292	1989 *
Center Biophysical Sciences and Engineering Addition	19,373	2001
Center for Labor Education and Research	4,776	1975 *
Center for Nuclear Imaging Research	14,481	1986
Center for Psychiatric Medicine	160,956	1992
Center for Psychiatric Medicine Parking	26,786	1992
Center for Research in Women's Health	25,559	2001
Central Laundry Building	31,968	1986 (L)
Central Support Building	107,371	1987 *
Central Utility No. 1 and Addition	22,334	1971
Central Utility No. 5	22,658	2004
Central Utility No. 3 and Addition	27,559	1991
Chauncey Sparks Center - CIRC	110,500	1969
Chemistry Building	66,540	1972
Chemistry Annex	7,404	1978
Chevron Building	48,170	1989 *
Child Care Center	6,213	1993
Children's Harbor	63,619	2003 (R)
Children's Hospital Ambulatory Care Center	21,048	1994 (R)



## UAB BUILDING SUMMARY (CONTINUED)

<u>Building Name</u>	<u>Gross Square Footage</u>	<u>Construction Completed or Acquired*</u>
Children's Hospital Tower	19,600	1992 (R)
Civitan International Research Center	57,044	1992
Community Care Building	61,067	1991 *
Community Health Services - 19th	86,244	1981 *
Community Health Services - 20th	66,409	1979 *
Cook Springs Farm (5 Buildings)	17,142	1980 *
Cudworth Building	47,957	1963
Denman Hall (Student Residence)	68,840	1973
Dentistry Building	109,629	1951
Dentistry Building Addition	51,897	1975
Dentistry Building Storage Addition	2,293	1976
Dentistry Clinic	43,264	1951
Dixie Warehouse	4,000	1996 (R)
Dowdy Building	2,593	1971 *
Education Building	111,352	1971
Education Building Parking	32,930	1971
Engel Day Treatment Center	4,895	1970
Engel Day Treatment Center Addition	15,828	1975
Facilities Administration Building	24,591	1995 *
Facilities Administration Annex No. 1	3,166	1995 *
Facilities Administration Annex No. 2	1,790	1995 *
Faculty Office Tower	102,731	2003
Flammable Storage Building	1,205	1980
Fleet Operations Center	1,302	1989 *
General Services Building	52,973	1979
General Services Building 3rd, 4th, and 5th Floor Expansion	78,121	1991
Henry Peters Building	77,950	1975
Henry Peters Building Parking	27,302	1975
Hill University Center	138,810	1983
Hill University Center - Auto Tellers	625	1984
Hixson Hall (Student Residence)	94,845	1962
Hoehn Engineering Building	36,384	1987
Hoehn Engineering Building Addition	3,178	1997
Holcomb Building	1,189	1999 (R)
Holley-Mears Building	10,968	1978 *
Hospital Annex II	6,506	1986 *
Hospital Support Building	43,554	2002
Hulsey Center	52,395	1981
Hulsey Center Addition	5,462	2004
Humanities Building	65,443	1972
Huntsville Primary Care	94,713	2003
Jefferson Tower	301,878	1940
Jefferson Tower - North Wing	118,298	1966
Jefferson Tower - South Wing Addition	22,800	1970
John N. Whitaker Building	5,255	2001 (R)
Kaul Human Genetics Building	160,118	2001
Kirklin Clinic Parking Deck	2,690	2001 (R)
Kracke Building	40,194	1928
Learning Resources Center	79,243	1970
Liberty National Building	43,751	1990 (R)

## UAB BUILDING SUMMARY (CONTINUED)

<u>Building Name</u>	<u>Gross Square Footage</u>	<u>Construction Completed or Acquired*</u>
Lister Hill Library	49,125	1971
Lister Hill Library Addition	88,547	1996
Lister Hill Parking	13,224	1971
Lyons-Harrison Research Building	92,867	1960
Lyons-Harrison Research Building Addition	43,302	1966
Marshall Conference Center	3,234	1973 *
McCallum Basic Science Education and Research Facility	174,885	1985
Medical Education Building	49,893	1977
Medical Towers	76,842	1975 (R)
Midtown Center (Children's Hospital)	10,886	1999 (R)
Morningside Drive	2,900	1995 *
Motor Pool (Storage)	6,017	1972 *
Narrow Lane Road Building	16,545	1999 (R)
New Hillman Building	62,543	1928
Nursing Building	70,396	1971
Nursing Building Addition	9,994	1980
Nursing Building Addition II	7,264	1983
Nursing Building Parking	37,813	1971
Nursing Building West Addition	6,523	1992
OADI Technology Center	68,665	1997
Old Hillman Building	46,082	1902
Paula Building	7,866	2000 (R)
Pittman Center	6,899	1980
Police Annex	1,480	1992 *
Police Headquarters Building	12,713	1992 *
Police Support Building	3,893	1971 *
Quarterback Tower	91,135	1976
Radiology Film Storage Building	12,600	1992 (R)
Rast Hall (Student Residence)	130,344	1990
Richard M. Scrushy Building	76,643	2001
Rime Sportsplex	29,969	1993 * (L)
ROTC Building	4,794	1975 *
Ruffner Mountain Transmitter Station	150	1975
Russell Wing, University Hospital	93,931	1977
Rust Center	29,404	1969
Rust Center Parking	53,751	1969
Ryals Public Health Building (Floors 1 & 2)	40,989	1996
Ryals Public Health Building (Floors 3 & 4)	36,971	1998
Ryals Public Health Building (Floors 5 & 6)	37,476	2000
Samuel Ullman Museum	5,425	1993 *
Scene Shop	6,058	1975 *
Smolian International House	9,472	1992
Smolian Psychiatric Clinic	22,315	1960
Sorority Square Building	9,018	1989 *
Southern Research Institute	2,784	2002 (R)
Spain Rehabilitation Center	65,076	1963
Spain Rehabilitation Center Addition	35,659	1969
Spain Rehabilitation Center Addition II	50,975	1991
Spain Rehabilitation Center - Pizitz Memorial Pool Addition	3,008	1987
Spain Tower (South 1/2 Spain/Wallace Building)	127,298	1979

## UAB BUILDING SUMMARY (CONTINUED)

<u>Building Name</u>	<u>Gross Square Footage</u>	<u>Construction Completed or Acquired*</u>
Spain Tower Kidney Transplant Unit Expansion	18,243	1982
Spain Tower 8th and 9th Floor Expansion	37,622	1984
Spencer Honors House	9,326	1903 *
Sterne Library	79,157	1973
Sterne Library Addition	90,371	1987
Tinsley Harrison Tower	131,656	1984
Town House	106,889	1985 *
Trauma Communications Center	1,696	1960 *
Trash Compactor Facility	2,262	1982
UAB Obstetrics Special Care	18,321	1983 *
UAB Substance Abuse Center	32,714	1993 *
Ullman Building	30,615	1910
Ullman - Boiler Building	5,348	1978
Ullman - West Addition	20,414	1950
University Boulevard Parking Deck	258,807	1987
University Federal Credit Union	4,582	2000
University Inn	89,515	1986 * (L)
University Optometric Group	2,334	1986 *
University Park Business Center	19,160	1990 (R)
University Stores Warehouse/Annex	156,697	1985 *
Veterans' Affairs Medical Center	5,978	1990 (R)
Volker Hall	394,804	1971
Volker Hall Basement Addition	35,626	1996
Volker Hall - Instructional Addition	65,529	2003
Volker Hall Parking	13,144	1971
Volker Hall Plaza Addition	11,211	1991
Wallace Physical Education Facility	52,655	1974
Wallace Tower (North 1/2 Spain/Wallace Building)	104,075	1979
Wallace Tower 7th, 8th, and 9th Floor Expansion	46,404	1984
Wallace Tumor Institute	73,211	1976
Wallace Tumor Institute - NMR Addition	11,830	1985
Wallace Tumor Institute - 4th, 5th, and 6th Floor Expansion	70,324	1992
Waste Holding Facility	18,780	1987 *
WBHM	4,510	1971
WBHM Addition	2,640	1980
Webb Nutrition Sciences Building	71,443	1983
West Pavilion	387,877	1991
West Playing Fields Building	800	1996
White Building	3,338	1991 *
Woodward Estate	31,339	1971 *
Worrell Building	37,484	1986 *
Worrell Building Addition	2,086	2002
Young Memorial Field Building	638	1984
Zeigler Research Center	115,116	1971
4th Avenue Parking Deck	558,015	2004
501 Building	58,585	2001 * (L)
526 Building	3,528	1993
6th Avenue Parking Deck	411,148	1982
6th Avenue Park Deck Addition	179,509	2003
7-11 Building	5,387	1971 *

## UAB BUILDING SUMMARY (CONTINUED)

<b><u>Building Name</u></b>	<b><u>Gross Square Footage</u></b>	<b><u>Construction Completed or Acquired*</u></b>
725 Building	14,139	1999 (R)
910 Building	2,728	1972
912 Building	25,455	2001
917 Building	3,520	1974 *
5th Avenue Parking Deck	281,000	2000 (R)
9th Avenue Parking Deck	215,747	1996
10th Avenue Parking Deck	146,308	1981 *
1006 19th Street South (Johnson House)	7,865	1985 *
1043 Building	3,204	1975 *
1055 Building	8,157	1974 *
1101 Building	2,800	2001 *
12th Street Parking Deck	224,916	2004
1430 Warehouse	25,688	1995 *
15th Street Classroom Building	16,145	1973
15th Street Office Building	26,161	1968 *
1521 Building	8,690	1990 *
1711 Building	2,125	1986 *
1715 Building	1,650	1986 *
19th Street Parking Deck	195,491	1970
19th Street Parking Deck Expansion	101,220	1991
1515 Building	10,000	2001 (R)
2020 Building	9,854	1988 *
8215 Building	1,083	1999 (R)

(R) = Externally owned; UAB rents space

(L) = UAB-owned; space leased out

### **Under Construction**

Campus Recreation Center  
 Chemistry Building 3rd Floor Renovations  
 Cudworth Building Renovations  
 Dentistry Building Renovations  
 Hospital Renovation Projects  
 Medical Education Building Renovations  
 North Pavilion  
 Research Support Building  
 Shelby Biomedical Research Building  
 Sparks Center Renovations  
 UAB Communications Infrastructure Upgrade  
 University Boulevard Office Building  
 Volker Hall Animal Resources Program Renovations

### **In Design**

Academic/Classroom Building  
 Regional Biosafety Laboratory  
 Women and Infants' Facility

### **Additional Existing Buildings, University-Related**

Callahan Eye Foundation Hospital  
 Children's Hospital of Alabama  
 Cooper Green Hospital  
 John N. Whitaker Building  
 Medical Alumni Building  
 Southern Research Institute  
 The Kirklin Clinic  
 Veterans' Affairs Medical Center

**UAB SPACE BY FUNDING UNIT  
(Gross Square Footage)**

<b>Year Ending</b>	<b>Educational/ General</b>	<b>Auxiliary</b>	<b>Hospital</b>	<b>Total*</b>
June 30, 1980	2,732,852	1,100,000	1,200,000	5,032,852
June 30, 1985	3,176,269	1,852,871	1,208,951	6,238,091
June 30, 1990	3,987,318	2,658,145	1,543,062	8,188,525
June 30, 1995	4,717,977	3,199,602	2,120,623	10,038,202
June 30, 2000	5,248,700	3,617,182	2,007,712	10,873,594
June 30, 2004	6,254,986	3,715,081	1,756,963	11,727,030

\*Includes space leased by UAB and space rented out to others; excludes shell space.

Source: ACHE Space Data Report

**UAB BUILDING REPLACEMENT COSTS  
(FY 2003-04, Construction Only)**

\$1,564,221,000

**FUNDING SOURCES  
New Construction and Major Renovations  
(Fiscal Years 1969-2004)**

	<b><u>UAB Funds</u></b>	<b><u>State Funds</u></b>	<b><u>Private Funds</u></b>	<b><u>Federal Funds</u></b>	<b><u>Total**</u></b>
Projects Capitalized*	\$1,010,141,220	\$95,501,825	\$84,295,354	\$96,951,532	\$1,286,889,931
Percent of Total	78.5%	7.4%	6.6%	7.5%	100.0%

\*Includes buildings and building improvements capitalized as of 9/30/04; includes investment in plant funds less separate campus acquired (\$18,738,017).

\*\*Reflects capitalization adjustments in prior years.

**CAPITALIZED EXPENDITURES  
(New Construction and Major Renovations)**

**1969-1999**  
\$777,109,209

<b><u>2000</u></b>	<b><u>2001</u></b>	<b><u>2002</u></b>	<b><u>2003</u></b>	<b><u>2004</u></b>	<b><u>Total</u></b>
\$80,864,861	\$67,611,559	\$146,760,988	\$195,542,353	\$136,055,304	\$1,403,944,274

Source: Financial Affairs

## UAB SPACE DISTRIBUTION (AS OF SEPTEMBER 30, 2003)

<u>Space Use</u>	<u>Total Net Assignable Square Feet</u>	<u>Central Administration</u>	<u>Joint Health Sciences / First Professional<sup>1</sup></u>	<u>General Academic</u>	<u>University Hospital</u>	<u>Auxiliary</u>	<u>Non-Institutional Agency</u>
Classroom Facilities	170,121	0	34,586	135,535	0	0	0
Laboratory Facilities							
Instructional	406,777	0	176,278	230,499	0	0	0
Sponsored Research	529,169	0	452,582	76,587	0	0	0
Other	219,229	8,333	122,607	62,758	0	2,380	23,151
Office Facilities	1,970,785	278,981	934,936	371,285	276,551	29,648	79,384
Central Libraries (excludes offices)	201,504	0	62,737	138,297	470	0	0
Special Use Facilities <sup>2</sup>	315,365	63,060	130,351	66,727	22,820	25,204	7,203
General Use Facilities <sup>3</sup>	431,988	144,805	63,174	49,377	110,313	38,421	25,898
Support Facilities <sup>4</sup>	666,696	328,052	63,076	71,690	96,945	16,978	89,955
Highrise & Enclosed Parking Facilities	1,859,683	0	0	0	0	1,859,683	0
Health Care Facilities <sup>5</sup>	592,350	0	19,771	0	566,585	0	5,994
Residential Facilities <sup>6</sup>	578,943	28,540	7,626	0	57,549	273,730	211,498
Unclassified <sup>7</sup>	47,126	1,752	30,031	5,134	10,209	0	0
<b>TOTAL</b>	<b>7,989,736 <sup>8</sup></b>	<b>853,523</b>	<b>2,097,755</b>	<b>1,207,889</b>	<b>1,141,442</b>	<b>2,246,044</b>	<b>443,083</b>

<sup>1</sup>Includes Schools of Dentistry, Medicine, and Optometry.

<sup>2</sup>Special Use Facilities include those used for athletics/physical education, audiovisual-radio-TV, non-health professional clinics, demonstrations, and greenhouses.

<sup>3</sup>General Use Facilities include spaces for assembly, exhibition, food services, lounges, day care, merchandising, recreation, meetings, and locker rooms.

<sup>4</sup>Support Facilities include central computer, central service, telecommunications, shop, storage, and hazardous materials spaces.

<sup>5</sup>Health Care Facilities include patient bedrooms and baths, nurses' stations, surgery and treatment rooms, service laboratories, supply rooms, public waiting rooms, health care service rooms, call rooms, and staff support space.

<sup>6</sup>Residential Facilities include apartments, dormitories, houses, and hotel rooms.

<sup>7</sup>Unclassified spaces are those not yet assigned or to be renovated.

<sup>8</sup>Excludes shelled space.