



# **FACTS & FIGURES**

**2008-2009**

# **FACTS & FIGURES 2008-09**

Twenty-ninth Edition

March 2009

Office of Planning and Analysis  
UNIVERSITY OF ALABAMA AT BIRMINGHAM  
Birmingham, Alabama 35294-0104  
(205) 934-2384

## FOREWORD

The Office of Planning and Analysis is pleased to present *Facts & Figures 2008-09*. This is the 29<sup>th</sup> edition of the UAB factbook, the twelfth edition available electronically on the web. *Facts & Figures* is compiled by Planning and Analysis but reflects contributions from offices all over campus. We remain grateful for our contributors' continued assistance.

In recent years the pace of technological development and the need for timely management information have tended to limit the life span and utility of the printed factbook. Therefore, this year's *Facts & Figures* can be easily accessed electronically rather than in a printed format via the Office of Planning and Analysis website ([www.iss.uab.edu](http://www.iss.uab.edu)). Posting this document electronically to the web will allow for continuous updating.

Our objective with this factbook is to produce a useful and usable resource for a variety of information needs. Therefore, we welcome and appreciate your comments and suggestions about the content of *Facts & Figures*.

## TABLE OF CONTENTS

### **GENERAL INFORMATION**

Campus Map . . . . .	7
UAB Vision, Mission, and Goals. . . . .	8
The Board of Trustees . . . . .	9
Administration . . . . .	10
UAB Organizational Structure . . . . .	12
Academic Departments and Chairs . . . . .	13
Significant Dates . . . . .	16
UAB Presidents . . . . .	17
Honorary Degrees Conferred . . . . .	18
President's Medal . . . . .	20
Distinguished Alumni Award . . . . .	20
Program Accreditation . . . . .	21
University Hospital Statistical Highlights . . . . .	27
Library Statistics Fall 2008. . . . .	28

### **STUDENT INFORMATION**

Fall Semester 2008 Enrollment by School and Level . . . . .	30
Fall Semester 2008 Enrollment Full-time and Part-time by Race and Gender . . . . .	31
Fall Semester 2008 Student Demographics . . . . .	
Undergraduate . . . . .	32
Entering Freshmen. . . . .	33
Graduate . . . . .	34
First Professional . . . . .	35
UAB Students by Source Fall 2008 . . . . .	36
Fall Enrollment by School 2003-2008 . . . . .	37
Fall Enrollment by Class 2003-2008. . . . .	37
Fall Enrollment by Student Level 1969-2008 . . . . .	38
Fall Headcount Enrollment 1969-2008 (Chart) . . . . .	39
Fall Enrollment Full-time and Part-time by Gender 1983-2008 . . . . .	40
Fall Enrollment by Student Source 2004-2008 . . . . .	40
Fall Enrollment by Race and Level 2003-2008 . . . . .	41
Credit Hour Production Fall 2008 . . . . .	42
Annual Credit Hour Production by School 2001-02 through 2007-08 . . . . .	43
Degrees Offered at UAB . . . . .	45
Total Degrees Available . . . . .	48
Degrees Awarded by School 1969-70 through 2007-08 . . . . .	49
Degrees Conferred July 1, 1969 – June 30, 2008 . . . . .	51
Required Student Tuition and Fees Fall 2008 . . . . .	52
Student Aid Funds Available 2001-02 through 2007-08 . . . . .	54
Athletics . . . . .	55



## **FACULTY AND STAFF**

Work Force FY 2008-09 .....	57
Work Force by Area, Status, Gender, and Job Category 2002-03 through 2008-09.....	58
Work Force by Area and by Status 2001-02 through 2008-09 (Charts) .....	59
Full-Time Work Force and Payroll 1998 through 2008 .....	60
Full-Time Faculty by Rank, Gender, and Tenure Status Fall 2008 .....	61
Highest Degrees of Full-Time Faculty by School by Rank Fall 2008 .....	64
Endowed Positions .....	67
Faculty Awards and Honors .....	71

## **FINANCIAL AND PHYSICAL RESOURCES**

Selected Financial Highlights FY 2004-05 through FY 2007-08 .....	77
Financial Profile FY 2007-08 Actual .....	78
Financial Profile FY 2007-08 Actual (Chart) .....	79
State Funding from the Educational Trust Fund as Enacted FY 1967-68 to FY 2008-09 .....	80
Sponsored Project Expenditures FY 2001 through FY 2008.....	82
Summary of Grants and Contracts Awarded FY 2008.....	83
Building Summary Fall 2008 .....	84
Space by Funding Unit .....	88
Building Replacement Costs FY 2008-09 .....	88
Funding Sources for New Construction and Major Renovations 1969-2008 .....	88
Capitalized Expenditures for New Construction and Major Renovations 1969-2008.....	88
Space Distribution (as of September 30, 2008) .....	89

# **GENERAL INFORMATION**



## **UAB'S PLAN FOR THE FUTURE**

### **Vision:**

An internationally renowned research university – a first choice for education and health care.

### **Mission:**

UAB is a research university and academic health center that discovers, teaches and applies knowledge for the intellectual, cultural, social and economic benefit of Birmingham, the state and beyond.

### **Goals:**

- (1) Undergraduate Education - We will achieve a highly effective undergraduate educational experience to give students the best possible preparation for productive and meaningful careers and lives that benefit society.
- (2) Graduate and Professional Education - We will ensure that graduate and professional programs are exceptional in preparing students to lead, teach, conduct research, and provide professional services.
- (3) Research and Scholarship - We will expand and improve UAB's research and scholarship capability to acquire and disseminate new knowledge that benefits society and that further positions UAB as an internationally recognized research university.
- (4) Service to Community and State - We will enhance our value and reputation in the state by working effectively with partners to help advance community and state goals in education, health, quality of life and economic development.
- (5) Community and Financial Support - We will aggressively pursue and secure community and financial support.
- (6) Work Environment - We will create a positive, supportive and diverse work environment in which faculty and staff can excel.

## THE BOARD OF TRUSTEES OF THE UNIVERSITY OF ALABAMA

The Honorable Bob Riley  
Governor of Alabama  
President ex officio

Dr. Joseph Morton  
State Superintendent of Education  
Ex officio

### TRUSTEES (by Congressional district)

First:	Angus R. Cooper II, Mobile Marietta M. Urquhart, Mobile	Fifth:	Joe H. Ritch, Huntsville Ronald W. Gray, Huntsville
Second:	Joseph C. Espy III, Montgomery W. Davis Malone III, Dothan	Sixth:	Paul W. Bryant Jr., Tuscaloosa John J. McMahon Jr., Birmingham
Third:	Vanessa Leonard, Rockford James W. Wilson III, Montgomery	Seventh:	Karen Phifer Brooks, Tuscaloosa John H. England Jr., Tuscaloosa Andria S. Hurst, Birmingham
Fourth:	Finis E. St. John IV, Cullman (President <u>pro tempore</u> ) William "Britt" Sexton, Decatur		

### TRUSTEES EMERITI

T. Massey Bedsole, Mobile  
Frank H. Bromberg Jr., Birmingham  
Oliver H. Delchamps Jr., Fairhope  
Garry Neil Drummond, Birmingham  
Jack Edwards, Mobile  
Joseph L. Fine, Montgomery  
Sandra Hullett, M.D., Eutaw  
Olin B. King, Huntsville  
Peter L. Lowe, Huntsville  
Sidney L. McDonald, Arab  
John T. Oliver Jr., Jasper  
Martha Simms Rambo, Huntsville  
Yetta G. Samford Jr., Opelika  
Maury D. Smith, Montgomery  
Cleophus Thomas Jr., Anniston  
John Russell Thomas, Alexander City  
Cordell Wynn, Tuscaloosa

\*\*\*\*\*

Chancellor: Malcolm Portera, Ph.D.

Secretary of the Board: Michael A. Bownes

General Counsel: Ralph Smith

# ADMINISTRATION



Dr. CAROL Z. GARRISON  
President



DR. ELI I. CAPILOUTO  
Provost



DR. LOUIS DALE  
Vice President for  
Equity and Diversity



DR. WILLIAM FERNIANY  
Chief Executive Officer,  
UAB Health System



DR. SHIRLEY SALLOWAY KAHN  
Vice President for Development,  
Alumni, and External Relations



DR. RICHARD B. MARCHASE  
Vice President for Research  
and Economic Development



RICHARD L. MARGISON  
Vice President for Financial  
Affairs and Administration



DR. DOUGLAS RIGNEY  
Vice President for  
Student Affairs



DR. ROBERT R. RICH  
Senior Vice President for  
Medicine and Dean,  
School of Medicine



SHEILA M. SANDERS  
Vice President for Information  
Technology / Chief Information  
Officer

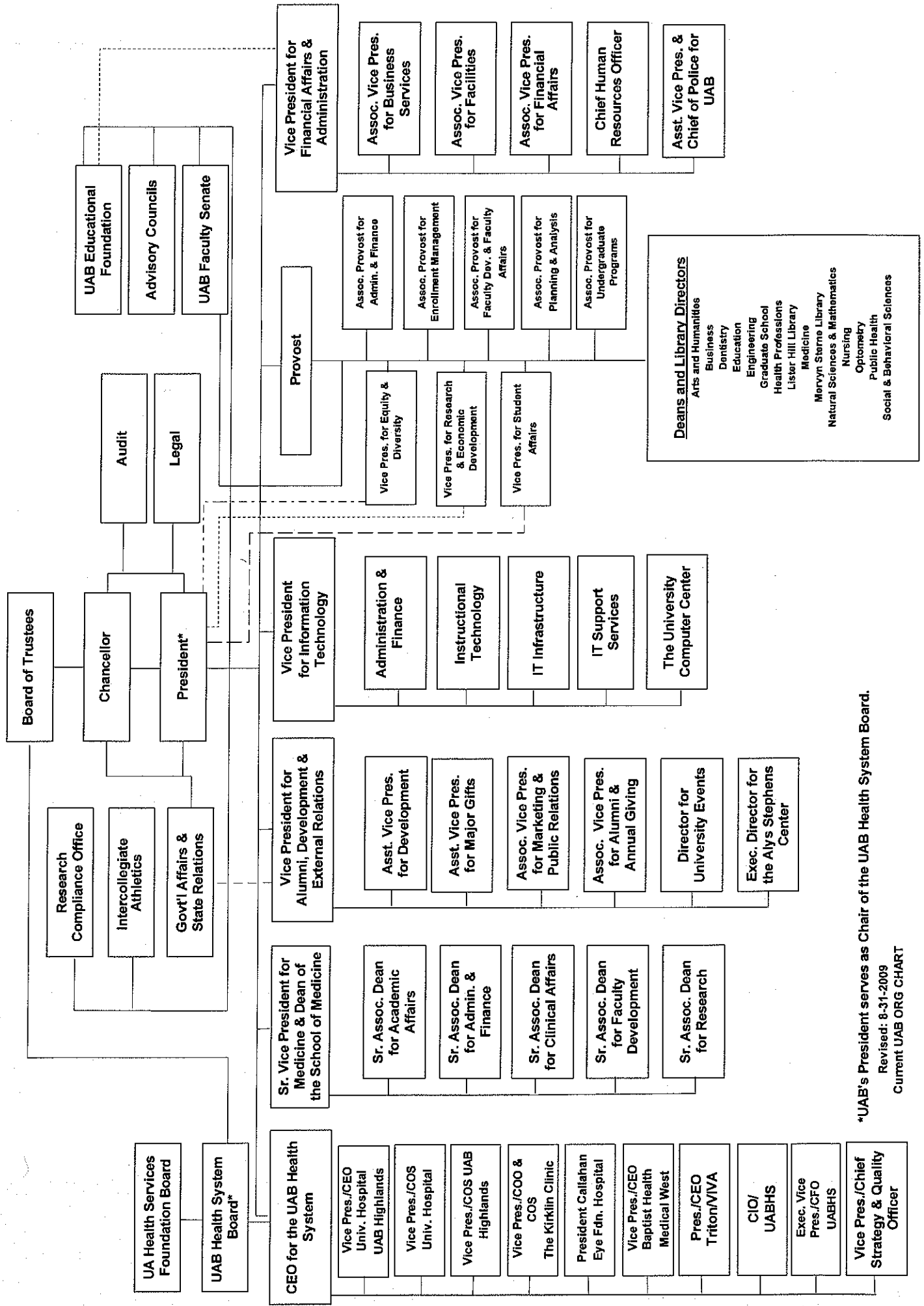
## UAB ADMINISTRATION

<u>Unit/School (Date of Establishment)</u>	<u>Dean/Administrator</u>
Arts and Humanities (1973)	Bert Brouwer, M.F.A., Dean
Business (1971)	David R. Klock, Ph.D., Dean
Dentistry (1945)	Huw F. Thomas, Ph.D., Dean
Education (1971)	Michael J. Froning, Ed.D., Dean
Engineering (1971)	Linda C. Lucas, Ph.D., Dean
Health Professions (1969)	Harold P. Jones, Ph.D., Dean
Medicine (1945*)	Robert R. Rich, M.D., Senior Vice President/Dean
Natural Sciences and Mathematics (1973)	Lowell E. Wenger, Ph.D., Dean
Nursing (1967*)	Doreen C. Harper, Ph.D., Dean
Optometry (1969)	Rodney Nowakowski, O.D., Interim Dean
Public Health (1981)	Max Michael III, M.D., Dean
Social and Behavioral Sciences (1973)	Jean Ann Linney, Ph.D., Dean
Graduate School (1970)	Bryan D. Noe, Ph.D., Dean
UAB University Hospital (1945)	Cynthia G. Brumfield, M.D., Chief of Staff

\* Moved to Birmingham from Tuscaloosa.



# UAB ORGANIZATIONAL STRUCTURE



\*UAB's President serves as Chair of the UAB Health System Board.

Revised: 8-31-2009  
Current UAB ORG CHART



## UAB ACADEMIC DEPARTMENTS AND CHAIRS

### **School of Arts and Humanities**

Art and Art History  
Communication Studies  
English  
Foreign Languages and Literatures  
Music  
Philosophy  
Theatre

### **Chair**

Erin Wright, M.F.A.  
Virginia Peck Richmond, Ph.D.  
Peter J. Bellis, Ph.D.  
John K. Moore Jr., Ph.D., Interim  
Jeffrey W. Reynolds, D.M.A.  
Harold A. Kincaid, Ph.D.  
William E. York, M.F.A.

### **School of Business**

Accounting and Finance  
Management, Information Systems, and  
Quantitative Methods  
Marketing, Industrial Distribution, and Economics

### **Chair**

Frank M. Messina, Ph.D., Interim  
Eric Jack Ph.D., Interim  
  
Robert Robicheaux, Ph.D.

### **School of Dentistry**

Comprehensive Dentistry  
Diagnostic Sciences  
Endodontics  
Oral and Maxillofacial Surgery  
Orthodontics  
Pediatric Dentistry  
Periodontology  
Prosthodontics

### **Chair**

Peng-Ru Liu, D.M.D., D.D.S.  
Gregg H. Gilbert, D.D.S.  
Paul D. Eleazer, D.D.S.  
Peter D. Waite, D.D.S., M.D.  
Christos Vlachos, D.M.D., Interim  
Noel K. Childers, D.D.S., Ph.D.  
Michael S. Reddy, D.M.D., D.M.Sc.  
Sandra Jean O'Neal, D.M.D.

### **School of Education**

Curriculum and Instruction  
Human Studies  
Leadership, Special Education and Foundations

### **Chair**

Charles Calhoun, Ph.D.  
David M. Macrina, Ph.D.  
Lou Anne Worthington, Ph.D.

### **School of Engineering**

Biomedical Engineering  
Civil, Construction, and Environmental Engineering  
Electrical and Computer Engineering  
Materials Science and Engineering  
Mechanical Engineering

### **Chair**

Timothy M. Wick, Ph.D.  
Fouad H. Fouad, Ph.D.  
Gregg L. Vaughn, Ph.D.  
J. Barry Andrews, Ph.D.  
Bharat K. Soni, Ph.D.

## **UAB ACADEMIC DEPARTMENTS AND CHAIRS (CONTINUED)**

### **School of Health Professions**

Clinical and Diagnostic Sciences  
Health Services Administration  
Nutrition Sciences\*  
Occupational Therapy  
Physical Therapy

### **Chair**

Edward D. Huechtker Sr., Ph.D.  
Gerald L. Glandon, Ph.D.  
W. Timothy Garvey, M.D.  
Penelope Moyers, Ed.D.  
Sharon E. Shaw, Dr.P.H.

### **Joint Health Sciences**

Biochemistry and Molecular Genetics  
Cell Biology  
Genetics  
Microbiology  
Neurobiology  
Nutrition Sciences\*  
Pathology  
Pharmacology and Toxicology  
Physiology and Biophysics

### **Chair**

Tim M. Townes, Ph.D.  
Etty Benveniste, Ph.D.  
Bruce R. Korf, M.D.  
David D. Chaplin, M.D., Ph.D.  
J. David Sweatt, Ph.D.  
W. Timothy Garvey, M.D.  
Kevin A. Roth, M.D., Ph.D.  
Mary-Ann Bjornsti, Ph.D.  
Dale J. Benos, Ph.D.

### **School of Medicine**

Anesthesiology  
Dermatology  
Emergency Medicine  
Family and Community Medicine  
Medicine  
Neurology  
Obstetrics and Gynecology  
Ophthalmology  
Pediatrics  
Physical Medicine and Rehabilitation  
Psychiatry and Behavioral Neurobiology  
Radiation Oncology  
Radiology  
Surgery

### **Chair**

Keith A. Jones, M.D.  
Craig A. Elmetts, M.D.  
Janyce M. Sanford, M.D.  
T. Michael Harrington, M.D.  
Edward Abraham, M.D.  
Ray L. Watts, M.D.  
William W. Andrews, M.D.  
Lanning B. Kline, M.D.  
Sergio B. Stagno, M.D.  
Amie B. Jackson, M.D.  
James Meador-Woodruff, M.D.  
James A. Bonner, M.D.  
Reginald Munden, M.D.  
Kirby I. Bland, M.D.

### **School of Natural Sciences and Mathematics**

Biology  
Chemistry  
Computer and Information Sciences  
Mathematics  
Physics

### **Chair**

Robert U. Fischer Jr., Ph.D.  
David E. Graves, Ph.D.  
Anthony Skjellum, Ph.D.  
Rudi Weikard, Ph.D.  
David L. Shealy, Ph.D.

\*Joint with the Schools of Dentistry, Health Professions, and Medicine.

## **UAB ACADEMIC DEPARTMENTS AND CHAIRS (CONTINUED)**

### **School of Nursing**

Adult/Acute Health, Chronic Care, and Foundations  
Community Health, Outcomes and Systems  
Family/Child Health and Caregiving

### **Chair**

Anne W. Foote, D.S.N.  
Kathleen C. Brown, Ph.D.  
Pamela N. Fordham, D.S.N.

### **School of Optometry**

Optometry  
Vision Sciences

### **Chair**

Jimmy D. Bartlett, O.D.  
Paul D. Gamlin, Ph.D.

### **School of Public Health**

Biostatistics  
Environmental Health Sciences  
Epidemiology  
Health Behavior  
Health Care Organization and Policy

### **Chair**

George Howard, Dr.P.H.  
Edward M. Postlethwait, Ph.D.  
Donna K. Arnett, Ph.D.  
Jalie Tucker, Ph.D.  
Peter M. Ginter, Ph.D.

### **School of Social and Behavioral Sciences**

Government  
History and Anthropology  
Justice Sciences  
Psychology  
Sociology and Social Work

### **Chair**

Wendy Gunther-Canada, Ph.D.  
Carolyn A. Conley, Ph.D.  
John J. Sloan III, Ph.D.  
Karlene Ball, Ph.D., Interim  
Mark E. LaGory, Ph.D.

## **SIGNIFICANT UAB DATES**

- 1821 - Board of Trustees of the University of Alabama created by the General Assembly
- 1936 - Extension Center of the University of Alabama opened in Birmingham
- 1945 - School of Medicine moved from Tuscaloosa to Birmingham and became a four-year school
- 1945 - Jefferson and Hillman Hospitals combined to serve as the teaching hospital for the School of Medicine
- 1948 - School of Dentistry, with Dr. Joseph F. Volker as dean, enrolled its first class
- 1955 - First Ph.D. earned on the Birmingham campus
- 1958 - Campus expansion began with acquisition of approximately 8.5 blocks (60 acres) from the Birmingham Housing Authority
- 1966 - Extension Center in Birmingham became the University of Alabama in Birmingham, one of three campuses of the University of Alabama
- 1966 - College of General Studies established
- 1966 - School of Health Services Administration established
- 1967 - School of Nursing moved from Tuscaloosa to Birmingham
- 1969 - UAB became an autonomous campus with Dr. Joseph F. Volker as its first president
- 1969 - School of Community and Allied Health Resources established by the Alabama Legislature and Regional Technical Institute established for health occupations training
- 1969 - School of Optometry established
- 1970 - Graduate School established
- 1970 - First degrees awarded by UAB
- 1971 - College of General Studies reorganized as University College with Schools of Business, Education, Engineering, and Arts and Sciences
- 1973 - School of Arts and Sciences restructured into Schools of Humanities, Natural Sciences and Mathematics, and Social and Behavioral Sciences
- 1975 - Funds appropriated by Legislature for the purchase of approximately 30 blocks (140 acres) of Urban Renewal lands for UAB expansion
- 1976 - Dr. Joseph F. Volker appointed first chancellor of the University of Alabama System
- 1977 - Dr. S. Richardson Hill Jr. named second president
- 1981 - School of Public Health established
- 1984 - University of Alabama in Birmingham became University of Alabama at Birmingham
- 1987 - Dr. Charles A. McCallum named third president
- 1987 - School of Community and Allied Health became School of Health Related Professions
- 1988 - School of Humanities became School of Arts and Humanities
- 1989 - UAB exceeded \$100 million in active grants and contracts
- 1989 - Use of the designation "University College" discontinued

## **SIGNIFICANT UAB DATES (CONTINUED)**

- 1990 - 50,000th degree awarded by UAB
- 1992 - UAB's outpatient services moved to the newly constructed Kirklin Clinic
- 1993 - Dr. J. Claude Bennett named fourth president
- 1994 - UAB acquired Walker College, which became known as UAB Walker College
- 1994-95 - Certificate-level, junior college linkage programs (Regional Technical Institute) in the School of Health Related Professions phased out
- 1995 - Academic units reorganized under provost
- 1995 - UAB Health System established
- 1995 - UAB exceeded \$200 million in active grants and contracts
- 1997 - Mr. Paul Hardin named interim president
- 1997 - Dr. W. Ann Reynolds named fifth president
- 1998 - Relationship terminated between UAB and UAB Walker College
- 1999 - UAB launched the public phase of a \$250 million capital campaign, the largest capital campaign in its history; goal was later raised to \$350 million.
- 1999 - Southern Research Institute affiliated with UAB
- 2000 - UAB exceeded \$300 million in active grants and contracts
- 2001 - UAB moved to a semester academic calendar
- 2002 - University of Alabama Board of Trustees approved an affiliation agreement between the UAB Health System and Bessemer Carraway Medical Center
- 2002 - Dr. Malcolm Portera, Chancellor of the University of Alabama System, named interim president
- 2002 - Dr. Carol Z. Garrison named sixth president
- 2003 - Capital campaign officially ends on December 31, having raised \$388.7 million for UAB
- 2006 - School of Health Related Professions became School of Health Professions
- 2007 – Degrees awarded by UAB surpassed 100,000

## **UAB PRESIDENTS**

- Dr. Joseph F. Volker, 1969-1976
- Dr. S. Richardson Hill Jr., 1977-1987
- Dr. Charles A. McCallum, 1987-1993
- Dr. J. Claude Bennett, 1993-1996
- Mr. Paul Hardin (Interim), 1997
- Dr. W. Ann Reynolds, 1997-2002
- Dr. Malcolm Portera (Interim), 2002
- Dr. Carol Z. Garrison, 2002-present

## HONORARY UAB DEGREES CONFERRED

<u>Name</u>	<u>Date Conferred*</u>	<u>Degree</u>
Champ Lyons	October 1, 1965	Doctor of Science
Tinsley Randolph Harrison	October 1, 1965	Doctor of Science
Walter Bouldin	August 29, 1966	Doctor of Laws
Matthew Francis McNulty Jr.	August 22, 1969	Doctor of Science
Ruth Lawson Hanson	August 22, 1969	Doctor of Humanities
Joseph F. Volker	June 6, 1970	Doctor of Science
Bengt E. Gustafson	June 5, 1971	Doctor of Science
John A. Hand	June 5, 1971	Doctor of Laws
John Edward Meyer	June 4, 1972	Doctor of Humanities
Virginia Baxley	June 4, 1972	Master of Arts
Clyde Guss Cox	August 27, 1972	Master of Arts
Joseph Smolian	August 27, 1972	Doctor of Humanities
Clarence A. Hanson	June 9, 1974	Doctor of Literature
Samuel Richardson Hill Jr.	June 9, 1975	Doctor of Science
Charles Alexander McCallum	June 9, 1975	Doctor of Science
Arthur Davis Shores	June 9, 1975	Doctor of Humanities
Robert Hugh Daniel	June 5, 1977	Doctor of Laws
William Paul Brann	June 5, 1977	Doctor of Laws
William Micajah Spencer Jr.	June 5, 1977	Doctor of Humanities
George W. Campbell	June 5, 1977	Doctor of Laws
Julia Walker Russell	June 5, 1977	Doctor of Humane Letters
Henry Poellnitz Johnston	June 4, 1978	Doctor of Humanities
George Mooar Rust	June 4, 1978	Doctor of Science
Hall Williams Thompson	June 4, 1978	Doctor of Laws
John W. Kirklin	June 4, 1978	Doctor of Science
Margaret Spain McDonald	June 4, 1978	Doctor of Humanities
Samuel Booth Barker	June 3, 1979	Doctor of Science
Emil Carl Hess	June 3, 1979	Doctor of Humanities
William Hansell Hulsey	June 3, 1979	Doctor of Humanities
Kenneth Rule Daniel	June 8, 1980	Doctor of Science
William James Rushton	June 8, 1980	Doctor of Laws
Frank Park Samford	June 8, 1980	Doctor of Laws
Emmett Bryan Carmichael	June 7, 1981	Doctor of Science
Frederick W. Conner	June 7, 1981	Doctor of Humanities
Robert M. Frank	June 7, 1981	Doctor of Science
John S. Jemison Jr.	June 7, 1981	Doctor of Laws
Howard Lamar Holley	June 6, 1982	Doctor of Science
A. Edward Maumenee	June 6, 1982	Doctor of Science
John S. Shaw Jr.	June 6, 1982	Doctor of Laws
Joseph McConnell Farley	June 5, 1983	Doctor of Laws
J. Garber Galbraith	June 5, 1983	Doctor of Science
Charles W. Ireland	June 5, 1983	Doctor of Laws
Fuller Earle Callaway Jr.	June 3, 1984	Doctor of Science
Thomas Kermit Hearn Jr.	June 3, 1984	Doctor of Humanities
James Coleman Lee Jr.	June 3, 1984	Doctor of Laws
James Allen Pittman Jr.	June 3, 1984	Doctor of Science
Leonard Robinson	June 3, 1984	Doctor of Science
Jack J. Dreyfus	June 2, 1985	Doctor of Laws
Frederick Chapman Robbins	June 2, 1985	Doctor of Laws
Henry C. Goodrich	June 8, 1986	Doctor of Laws
Jack Dobbs McSpadden	June 8, 1986	Doctor of Laws
William F. Edmonds	June 8, 1986	Doctor of Science
W. Houston Blount	June 7, 1987	Doctor of Laws

\*Honorary degrees conferred prior to 1970 were conferred at the University of Alabama, Tuscaloosa.

## HONORARY UAB DEGREES CONFERRED (CONTINUED)

<u>Name</u>	<u>Date Conferred*</u>	<u>Degree</u>
Crawford T. Johnson III	June 7, 1987	Doctor of Laws
Joseph S. Bruno	June 5, 1988	Doctor of Laws
Eugene C. Gwaltney	June 5, 1988	Doctor of Laws
Charles B. Webb Jr.	June 5, 1988	Doctor of Laws
Glenn Ireland II	June 4, 1989	Doctor of Laws
William M. Spencer III	June 4, 1989	Doctor of Laws
Clifton R. Wharton Jr.	June 4, 1989	Doctor of Humane Letters
Katharine Reynolds Ireland	June 3, 1990	Doctor of Humanities
Charles Caldwell Marks	June 3, 1990	Doctor of Laws
Louis J. Willie	June 3, 1990	Doctor of Laws
Wallace R. Bunn	June 2, 1991	Doctor of Laws
William R. Ireland	June 2, 1991	Doctor of Laws
Thomas E. Rast	June 2, 1991	Doctor of Laws
J. Claude Bennett	June 7, 1992	Doctor of Science
Virginia Van der Veer Hamilton	June 7, 1992	Doctor of Letters
Carolyn Reid-Wallace	June 7, 1992	Doctor of Humane Letters
Richard Arrington Jr.	June 6, 1993	Doctor of Science
Arnold G. Diethelm	June 6, 1993	Doctor of Science
John R. Durant	June 6, 1993	Doctor of Science
H. Brandt Ayers	June 5, 1994	Doctor of Humane Letters
George D. Lundberg	June 5, 1994	Doctor of Science
Wallace D. Malone Jr.	June 4, 1995	Doctor of Laws
James Rachels	June 4, 1995	Doctor of Humane Letters
Alys Robinson Stephens	June 4, 1995	Doctor of Humanities
Elmer B. Harris	June 2, 1996	Doctor of Laws
Stevie Wonder	June 2, 1996	Doctor of Music
John W. Woods	June 2, 1996	Doctor of Laws
Don Logan	June 8, 1997	Doctor of Humane Letters
Sam C. Pointer Jr.	June 8, 1997	Doctor of Laws
James H. Woodward	June 8, 1997	Doctor of Laws
Robert Luckie Jr.	December 7, 1997	Doctor of Humanities
John J. McMahon Jr.	June 7, 1998	Doctor of Laws
Eric F. Wieschaus	June 7, 1998	Doctor of Science
Lord Trevor Smith	December 6, 1998	Doctor of Humane Letters
Willie L. Brown Jr.	June 6, 1999	Doctor of Humane Letters
H. Corbin Day	June 6, 1999	Doctor of Humane Letters
David Baltimore	December 5, 1999	Doctor of Science
William J. McDonough	December 5, 1999	Doctor of Humane Letters
David Satcher	June 4, 2000	Doctor of Science
Peter A. Georgescu	December 3, 2000	Doctor of Humane Letters
W. Richard West	June 10, 2001	Doctor of Laws
Regina M. Benjamin	December 15, 2001	Doctor of Science
Marie S. Ingalls	May 4, 2002	Doctor of Humanities
Michael E. Stephens	May 4, 2002	Doctor of Humanities
Annette Nevin Shelby	May 10, 2003	Doctor of Humanities
Alice E. Pigman	December 13, 2003	Doctor of Humanities
Freeman A. Hrabowski III	December 17, 2005	Doctor of Humanities
Jarman F. Lowder	December 16, 2006	Doctor of Humanities
Thomas H. Lowder	December 16, 2006	Doctor of Humanities
Herman D. Bolden	May 3, 2008	Doctor of Humanities
Caroline Patterson Ireland	December 13, 2008	Doctor of Humanities
Charles A. Collat Sr.	May 9, 2009	Doctor of Humanities

\*Honorary degrees conferred prior to 1970 were conferred at the University of Alabama, Tuscaloosa.

## **PRESIDENT'S MEDAL**

1985 - J. Durwood Bradley, M.D.  
1986 - B. Gene Bartow, Janet Redman Hill  
1987 - Peter Garthwaite Smith  
1988 - Max D. Cooper, M.D.  
1989 - James Hatcher  
1990 - Fred W. Sington  
1991 - Samuel Booth Barker, Ph.D.  
1992 - Juan M. Navia, Ph.D.  
1993 - Albert F. LoBuglio, M.D.  
1994 - Aaron L. Lamar Jr., Ed.D.  
1995 - George N. Mickwee  
1996 - William A. Sibley, Ph.D.  
1997 - Linda Flaherty-Goldsmith  
1998 - Odessa Woolfolk  
1999 - James A. Garland  
2000 - Albert D. Pacifico, M.D.  
2001 - John N. Whitaker, M.D. (posthumously)  
2002 - Ada Long, Ph.D.  
2003 - Margaret M. Porter, Michael Goodrich, Julian W. Banton  
2004 - William J. Koopman, M.D.  
2005 - Rachel Z. Booth, Ph.D., John M. Lyons, Ph.D.  
2006 - Virginia D. Gauld, Ph.D., Ina Branham Leonard, J.D.  
2007 - Richard J. Whitley, M.D.  
2008 - Basil I. Hirschowitz, M.D.

## **DISTINGUISHED ALUMNI AWARD**

1991 - Lawrence J. DeLucas, O.D., Ph.D.  
1992 - Richard M. Scrushy  
1993 - Helene Griffin Robertson  
1994 - William L. Roper, M.D., M.P.H.  
1995 - James H. Woodward, Ph.D.  
1996 - Kenneth L. Jackson  
1997 - Charles A. McCallum, D.M.D., M.D.  
1998 - Martha Warren Bidez, Ph.D.  
1999 - Jean A. Kelley, Ed.D.  
2000 - Robert C. Chapman  
2001 - Tommie G. Cummings  
2002 - Michael E. Stephens  
2003 - Gail H. Cassell, Ph.D.  
2004 - Marie L. O'Koren, Ed.D.  
2005 - Mary Lynne Capilouto, D.M.D.  
2006 - Albert J. Tully Jr., M.D.  
2007 - Ray Watts, M.D.  
2008 - Julie H. Hanna



## UAB PROGRAM ACCREDITATION

<u>Programs Eligible for Accreditation</u>	<u>Year Program Started</u>	<u>Most Recent Accreditation</u>	<u>Accreditation Agency</u>
UAB	1969	2005	Southern Association of Colleges and Schools
GRADUATE SCHOOL	1970 (as UAB)		Member of Council of Graduate Schools in the United States
SCHOOL OF ARTS AND HUMANITIES			
Art	1972	2008	National Association of Schools of Art and Design
Music	1982	2006	National Association of Schools of Music
Theatre	1973	2009	National Association of Schools of Theatre
SCHOOL OF BUSINESS	1969	2002	Association to Advance Collegiate Schools of Business-International
Accounting			
Baccalaureate Level	1969	2002	Association to Advance Collegiate Schools of Business-International
Master's Level	1982	2002	
SCHOOL OF DENTISTRY	1948	2007	American Dental Association, Commission on Dental Accreditation
All Specialty Programs:		2007	American Dental Association, Commission on Dental Accreditation
Endodontics	1956	2007	
Maxillofacial Prosthodontics	1973	2007	
Oral and Maxillofacial Surgery	1949	2004	
Orthodontics	1952	2007	
Pediatric Dentistry	1951	2007	
Periodontics	1956	2007	
Prosthodontics	1955	2007	
General Practice Residency	1977	2007	American Dental Association, Commission on Dental Accreditation
Advanced Educ. General Dentistry	1990	2007	American Dental Association, Commission on Dental Accreditation
SCHOOL OF EDUCATION	1969	2005	National Council for Accreditation of Teacher Education
		2005	Alabama State Board of Education Approval
Art Education	1972	2008	National Association of Schools of Art and Design
Music Education	1984	2006	National Association of Schools of Music
Rehabilitation Counseling	1980	2001	Council on Rehabilitation Education

## UAB PROGRAM ACCREDITATION (CONTINUED)

<u>Programs Eligible for Accreditation</u>	<u>Year Program Started</u>	<u>Most Recent Accreditation</u>	<u>Accreditation Agency</u>
SCHOOL OF ENGINEERING Baccalaureate Level	1969	2007	Accreditation Board for Engineering and Technology
SCHOOL OF HEALTH PROFESSIONS <u>Critical Care Department</u> Nurse Anesthesia	1946	2000	Council on Accreditation of Nurse Anesthesia Educational Programs
Respiratory Therapist Physician Assistant Studies	1973 1967	2008 2009	Committee on Accreditation for Respiratory Care Accreditation Review Commission on Education for the Physician Assistant
<u>Diagnostic and Therapeutic Sciences Department</u> Cytotechnology	1963	2004	Cytotechnology Programs Review Committee, American Society of Cytopathology, Commission on Accreditation of Allied Health Education Programs of the American Medical Association (CAAHEP) National Accrediting Agency for Clinical Laboratory Sciences
Medical Technology/Clinical Laboratory Science Nuclear Medicine Technology	1945 1969	2008 2003	Joint Review Committee on Educational Programs in NMT, Department of Education
<u>Health Services Administration Department</u> Health Administration	1965	2009	Commission on Accreditation of Healthcare Management Education (CAHME)
Health Information Management Baccalaureate Level	1972	2008	Commission on Accreditation for Health Informatics and Information Management Education, CAAHEP
<u>Nutrition Sciences Department</u> Dietetic Internship	1963	2008	American Dietetic Association

## UAB PROGRAM ACCREDITATION (CONTINUED)

<u>Programs Eligible for Accreditation</u>	<u>Year Program Started</u>	<u>Most Recent Accreditation</u>	<u>Accreditation Agency</u>
<u>Occupational Therapy Department</u> Occupational Therapy	1968	2005	Accreditation Council for Occupational Therapy Education, CAAHEP
<u>Physical Therapy Department</u> Physical Therapy	1975	2000	Commission on Accreditation in Physical Therapy Education
UNIVERSITY OF ALABAMA SCHOOL OF MEDICINE  Including: School of Medicine - Birmingham School of Primary Medical Care - Huntsville College of Community Health Sciences - Tuscaloosa Division of Continuing Medical Education UAB University Hospital	1945	2006	Liaison Committee on Medical Education
SCHOOL OF NATURAL SCIENCES AND MATHEMATICS Chemistry Computer and Information Sciences Baccalaureate Level	1969 1980	2006 2006 2005	Accreditation Council for Continuing Medical Education Joint Commission on Accreditation of Healthcare Organizations Accreditation Council on Graduate Medical Education (ACGME)
SCHOOL OF NURSING	1950	2000	American Chemical Society Accreditation Board for Engineering and Technology  Collegiate Commission on Nursing Education
SCHOOL OF OPTOMETRY Professional Program (O.D.) Residency programs: Cornea and Contact Lenses Family Practice Optometry Geriatric Optometry and Low Vision Rehabilitation-Veterans Affairs	1969 1980 1978 1982	2009 2009 2003 2004	Accreditation Council on Optometric Education Accreditation Council on Optometric Education

## UAB PROGRAM ACCREDITATION (CONTINUED)

<u>Programs Eligible for Accreditation</u>	<u>Year Program Started</u>	<u>Most Recent Accreditation</u>	<u>Accreditation Agency</u>
Primary Eye Care-Veterans Affairs	1979	2004	
Ocular Disease			
Georgia	1983	2008	
Pediatric Optometry	1986	2007	
SCHOOL OF PUBLIC HEALTH			
M.P.H. Program	1966	2008	Council on Education for Public Health
M.S.P.H. Program	1979		
Dr.P.H. Program	1979		
Ph.D. Program	1985		
SCHOOL OF SOCIAL AND BEHAVIORAL SCIENCES			
Forensic Sciences (M.S.)	1981	2009	Forensic Science Education Program Accreditation Commission (FEPAC)
Medical Psychology	1980	2007	American Psychological Association
Public Administration (M.P.A.)	1978	2009	National Association of Schools of Public Affairs and Administration
Social Work	1976	2007	Council on Social Work Education

## UAB PROGRAM ACCREDITATION

### RESIDENCY AND SUBSPECIALTY TRAINING PROGRAMS AT UAB HOSPITAL ACCREDITED BY ACCREDITATION COUNCIL ON GRADUATE MEDICAL EDUCATION

Department	Residency Program	Subspecialty Program	Most Recent Accreditation
Anesthesiology	Anesthesiology	Critical Care Anesthesiology Pain Management Adult Cardiothoracic Anesthesiology	2004 2004 2004 2007
<b>Dermatology</b>	Dermatology Dermatology/Pathology Procedural Dermatology	Dermatopathology Procedural Dermatology	2007 2005 2008
<b>Emergency Medicine</b>	Emergency Medicine		2006
<b>Genetics</b>	Medical Genetics		2006
<b>Medicine</b>	Internal Medicine	Allergy and Immunology Cardiovascular Disease Clinical Cardiac Electrophysiology Interventional Cardiology Endocrinology, Diabetes, & Metabolism Gastroenterology Geriatric Medicine Hematology/Oncology Infectious Diseases Nephrology Pulmonary Disease/Critical Care Medicine Rheumatology	2006 2005 2006 2006 2006 2006 2008 2006 2008 2006 2006 2006 2006 2008
<b>Neurology</b>	Neurology	Child Neurology Clinical Neurophysiology Vascular Neurology	2006 2006 2006 2008
<b>Obstetrics &amp; Gynecology</b>	Obstetrics & Gynecology		2007
<b>Ophthalmology</b>	Ophthalmology		2005
<b>Pathology</b>	Pathology	Blood Banking/Transfusion Medicine Cytopathology Forensic Pathology Hematopathology Molecular Genetic Pathology Neuropathology	2008 2006 2008 2006 2005 2007 2005
<b>Pediatrics</b>	Pediatrics	Adolescent Medicine Neonatal/Perinatal Medicine Pediatric Critical Care Medicine Pediatric Emergency Medicine Pediatric Endocrinology	2007 2007 2007 2007 2007

## UAB PROGRAM ACCREDITATION

### RESIDENCY AND SUBSPECIALTY TRAINING PROGRAMS AT UAB HOSPITAL ACCREDITED BY ACCREDITATION COUNCIL ON GRADUATE MEDICAL EDUCATION

Department Pediatrics (continued)	<u>Residency Program</u>	<u>Subspecialty Program</u>	<u>Most Recent Accreditation</u>
<b>Physical Medicine &amp; Rehabilitation</b>	Physical Medicine & Rehabilitation	Pediatric Gastroenterology	2007
		Pediatric Hematology/Oncology	2007
		Pediatric Infectious Diseases	2007
		Pediatric Nephrology	2008
		Pediatric Pulmonology	2007
		Sleep Medicine	2007
		Medicine/Pediatrics	2006
<b>Psychiatry</b>	Physical Medicine & Rehabilitation		2008
	Psychiatry	Pediatric Physical Medicine & Rehabilitation	2008
<b>Radiation Oncology Radiology</b>		Child & Adolescent Psychiatry	2006
			2007
	Radiation Oncology		2008
	Diagnostic Radiology		2008
<b>Surgery</b>		Neuroradiology	2008
		Vascular/Interventional Radiology	2008
	Nuclear Medicine		2008
	General Surgery		2006
		Pediatric Surgery	2008
		Plastic Surgery	2006
		Surgical Critical Care	2007
		Thoracic & Cardiovascular Surgery	2007
		Vascular Surgery	2005
	Neurosurgery		2008
<b>OTHER CAMPUSES</b>	Orthopaedic Surgery		2006
	Otolaryngology	Hand Surgery	2008
	Urology		2003
			2004
	Family Practice (Huntsville)		2008
	Sports Medicine (Huntsville)		2008
	Family Practice (Selma)		2007
	Internal Medicine (Montgomery)		2004

## UAB HOSPITAL STATISTICAL HIGHLIGHTS

<b>Discharges by Patient Origin</b> <sup>1,2,3</sup>	<b>2006-07</b>	<b>Percent of Total</b>	<b>2007-08</b>	<b>Percent of Total</b>
Jefferson County	19,950	45.5%	18,750	44.9%
Other Alabama Counties	20,213	46.1%	19,738	47.2%
Out of State	3,724	8.5%	3,314	7.9%

<b>Patient Information</b> <sup>1,2,3</sup>	<b>2006-07</b>	<b>2007-08</b>
Discharges <sup>1,2,3</sup>	43,505	41,802
Babies Delivered <sup>3</sup>	4,240	4,322
Total Inpatient Days of Care (Discharge Days) <sup>1,2,3</sup>	286,806	290,908
Emergency Department Visits <sup>3</sup>	58,760	54,654
Daily Average Number of Patients <sup>1,2,3</sup>	786	795
Average Length of Patient Stay <sup>1,2,3</sup>	6.59 days	6.96 days
Average Percentage of Occupancy <sup>1,2,3</sup>	86.08%	87.13%
Average Beds in Service <sup>4</sup>	908	908
Beds in Service, End-of-Year	908	908

### **Financial Information**

Salaries and Benefits	\$412,560,000	\$443,695,000
Total Expenses <sup>5</sup>	\$1,024,302,000	\$1,085,062,000
Average Daily Expenses	\$2,806,000	\$2,965,000

<sup>1</sup> Excludes normal newborns (newborns who are discharged with the mother).

<sup>2</sup> Includes 3,513 cases and 5,000 days in FY 2007, and 3,738 cases and 5,327 days in FY 2008, for outpatients with lengths of stay of 24 hours or greater.

<sup>3</sup> Data reported in UAB factbooks prior to FY 2002 varies from currently reported data due to consolidation of and refinements to the data sources made during FY 2002.

<sup>4</sup> The UAB Hospital is currently licensed for 908 beds.

<sup>5</sup> Includes transfers for depreciation and interest.

Source: UAB Hospital Financial Management

# UAB LIBRARY STATISTICS FALL 2008

	<u>Mervyn H. Sterne Library</u>	<u>Lister Hill Library of the Health Sciences<sup>1</sup></u>	<u>Total</u>
Volumes	1,661,586 <sup>2</sup>	360,160	2,021,746
Titles	970,306 <sup>2</sup>	117,243	1,087,549
Current Periodical Subscriptions	(see total column)	(see total column)	34,542 <sup>3</sup>
Archival Collections			
University Records Series	NA	243	243
Manuscript Collections	NA	154	154
Digital Collections			
Number of collections	7	NA	7
Size	676 GB	NA	676 GB
Number of Items	5499	NA	5499
Employees (Full-time Equivalents)			
Professional	19.2	19.0	38.2
Technical/Clerical	40.5	28.3	68.8
Student Assistants	6.8	4.5	11.3
Total Employees	66.5	51.8	118.3
Total Library Operating Expenditures <sup>4</sup>	\$6,487,124	\$5,288,349	\$11,775,473
Library Physical Facilities			
Net Assignable Area (square feet)	142,517	87,567	230,084
Shelving Capacity (linear feet)	152,758	71,834 <sup>5</sup>	224,592
Seating Capacity	1,000	577	1,577
Total Hours Open per Week	91 (7-day period)	94.5 (7-day period)	(see Library columns)
Classification System	Library of Congress	National Library of Medicine; Library of Congress (nonmedical)	(see Library columns)

1) Includes Reynolds Historical Library and the UAB Archives.

2) As of April 30, 2008.

3) This number represents total access to online full text and print periodical resources available to UAB students, faculty, and staff.

4) As of September 30, 2008.

5) Includes shelving at West Pavilion Library (LHL satellite) at UAB University Hospital.

Source: Library Directors



# **STUDENT INFORMATION**

**UAB FALL SEMESTER 2008 ENROLLMENT  
BY SCHOOL AND LEVEL**

<b>School</b>	<b>Under-graduate</b>	<b>Graduate</b>	<b>First Profes-sional</b>	<b>Total for Reporting<sup>1</sup></b>	<b>Advanced Profes-sional<sup>2</sup></b>	<b>Total incl. Adv. Prof.</b>
Arts and Humanities	1,327	83		1,410		1,410
Business <sup>3</sup>	1,525	345		1,870		1,870
Dentistry	21	2	228	251	93	344
Education	782	792		1,574		1,574
Engineering	728	304		1,032	5	1,037
Health Professions <sup>3</sup>	987	792		1,779	15	1,794
Joint Health Sciences		449		449		449
Medicine			623	623	973	1,596
Natural Sciences and Mathematics	1,509	190		1,699	16	1,715
Nursing	473	776		1,249		1,249
Optometry		27	174	201	13	214
Public Health		409		409	14	423
Social and Behavioral Sciences	1,563	220		1,783	3	1,786
Unclassified <sup>4</sup>	1,454	366		1,820		1,820
<b>TOTAL</b>	<b>10,369</b>	<b>4,755</b>	<b>1,025</b>	<b>16,149</b>	<b>1,132</b>	<b>17,281</b>

<sup>1</sup>This total is reported to state and federal agencies and is included in documents such as surveys and questionnaires.

<sup>2</sup>Advanced Professionals are interns, residents, and postdoctoral fellows plus students in postgraduate programs in dentistry and optometry.

<sup>3</sup>Included in the School of Health Professions graduate count are 31 students enrolled in the Administration Health Services program offered jointly by the School of Business and the School of Health Professions.

<sup>4</sup>Unclassified includes undergraduate students in General Studies and nondegree graduate students.

Source: UAB Headcount Enrollment Report, Fall Semester 2008

**UAB FALL SEMESTER 2008 ENROLLMENT  
FULL-TIME AND PART-TIME BY RACE AND GENDER**

	Non-Resident Alien		Black		American Indian		Asian or Pacific Islander		Hispanic		White		Unknown/Other/ Multicultural		Total	
	Male	Female	Male	Female	Male	Female	Male	Female	Male	Female	Male	Female	Male	Female	Male	Female
<b>FULL-TIME STUDENTS</b>																
Undergraduate	99	104	617	1,368	13	18	153	220	47	85	2,043	2,522	124	158	3,096	4,475
Graduate	249	166	71	231	4	7	40	52	10	22	576	993	30	50	980	1,521
First Professional	1	2	12	54	5	5	46	66	1	7	458	321	25	22	548	477
<b>TOTAL FULL-TIME</b>	<b>349</b>	<b>272</b>	<b>700</b>	<b>1,653</b>	<b>22</b>	<b>30</b>	<b>239</b>	<b>338</b>	<b>58</b>	<b>114</b>	<b>3,077</b>	<b>3,836</b>	<b>179</b>	<b>230</b>	<b>4,624</b>	<b>6,473</b>
<b>PART-TIME STUDENTS</b>																
Undergraduate	17	20	184	638	4	7	33	51	15	30	790	897	43	69	1,086	1,712
Graduate	62	57	86	294	4	4	29	40	16	26	502	1,056	22	56	721	1,533
First Professional	0	0	0	0	0	0	0	0	0	0	0	0	0	0	0	0
<b>TOTAL PART-TIME</b>	<b>79</b>	<b>77</b>	<b>270</b>	<b>932</b>	<b>8</b>	<b>11</b>	<b>62</b>	<b>91</b>	<b>31</b>	<b>56</b>	<b>1,292</b>	<b>1,953</b>	<b>65</b>	<b>125</b>	<b>1,807</b>	<b>3,245</b>
<b>TOTAL FULL-TIME AND PART-TIME STUDENTS</b>																
Undergraduate	116	124	801	2,006	17	25	186	271	62	115	2,833	3,419	167	227	4,182	6,187
Graduate	311	223	157	525	8	11	69	92	26	48	1,078	2,049	52	106	1,701	3,054
First Professional	1	2	12	54	5	5	46	66	1	7	458	321	25	22	548	477
<b>GRAND TOTAL</b>	<b>428</b>	<b>349</b>	<b>970</b>	<b>2,585</b>	<b>30</b>	<b>41</b>	<b>301</b>	<b>429</b>	<b>89</b>	<b>170</b>	<b>4,369</b>	<b>5,789</b>	<b>244</b>	<b>355</b>	<b>6,431</b>	<b>9,718</b>

Total does not include 1,132 full-time advanced professionals.

Source: Planning and Analysis, Fall 2008 Compliance Report

**UAB**  
**UNDERGRADUATE STUDENT DEMOGRAPHICS**  
**FALL 2008**

		Full-time		Part-time		Total	
		Number	Percent	Number	Percent	Number	Percent
<b>Total</b>		7,571	73.0%	2,798	27.0%	10,369	100.0%
<b>Gender</b>	Female	4,475	43.2%	1,712	16.5%	6,187	59.7%
	Male	3,096	29.9%	1,086	10.5%	4,182	40.3%
<b>Race</b>	White	4,565	44.0%	1,687	16.3%	6,252	60.3%
	Black	1,985	19.1%	822	7.9%	2,807	27.1%
	Asian / Pacific Islander	373	3.6%	84	0.8%	457	4.4%
	Hispanic	132	1.3%	45	0.4%	177	1.7%
	American Indian	31	0.3%	11	0.1%	42	0.4%
	Non-Resident Alien	203	2.0%	37	0.4%	240	2.3%
	Other / Multicultural	120	1.2%	29	0.3%	149	1.4%
	Unknown	162	1.6%	83	0.8%	245	2.4%
<b>Class</b>	Freshman	1,808	17.4%	142	1.4%	1,950	18.8%
	Sophomore	1,638	15.8%	315	3.0%	1,953	18.8%
	Junior	1,723	16.6%	560	5.4%	2,283	22.0%
	Senior	2,128	20.5%	1,038	10.0%	3,166	30.5%
	Post Baccalaureate	236	2.3%	651	6.3%	887	8.6%
	Other Undergraduate	38	0.4%	92	0.9%	130	1.3%
<b>Age</b>	Under 19	1,220	11.8%	34	0.3%	1,254	12.1%
	19-21	3,812	36.8%	294	2.8%	4,106	39.6%
	22-25	1,833	17.7%	925	8.9%	2,758	26.6%
	26-30	398	3.8%	622	6.0%	1,020	9.8%
	31-35	145	1.4%	342	3.3%	487	4.7%
	Over 35	163	1.6%	579	5.6%	742	7.2%
	Unknown	0	0.0%	2	0.0%	2	0.0%
	Average Age	21.5		29.5		23.6	
<b>Source</b>	Jefferson County	2,898	27.9%	1,678	16.2%	4,576	44.1%
	Other Metro Area Counties*	1,109	10.7%	487	4.7%	1,596	15.4%
	Other Alabama Counties	2,803	27.0%	474	4.6%	3,277	31.6%
	Other States	558	5.4%	122	1.2%	680	6.6%
	Other Countries	203	2.0%	37	0.4%	240	2.3%
	Unknown	0	0.0%	0	0.0%	0	0.0%
<b>School/Unit</b>	Arts & Humanities	941	9.1%	386	3.7%	1,327	12.8%
	Business	947	9.1%	578	5.6%	1,525	14.7%
	Dentistry (Dental Assisting)	20	0.2%	1	0.0%	21	0.2%
	Education	565	5.4%	217	2.1%	782	7.5%
	Engineering	590	5.7%	138	1.3%	728	7.0%
	Health Professions	713	6.9%	274	2.6%	987	9.5%
	Joint Health Sciences	0	0.0%	0	0.0%	0	0.0%
	Medicine (EMT)	0	0.0%	0	0.0%	0	0.0%
	Natural Sciences & Mathematics	1,188	11.5%	321	3.1%	1,509	14.6%
	Nursing	372	3.6%	101	1.0%	473	4.6%
	Optometry	0	0.0%	0	0.0%	0	0.0%
	Public Health	0	0.0%	0	0.0%	0	0.0%
	Social & Behavioral Sciences	1,168	11.3%	395	3.8%	1,563	15.1%
	Unclassified (General Studies)	1,067	10.3%	387	3.7%	1,454	14.0%

\*Blount, Shelby, St. Clair, and Walker counties.

Source: Planning and Analysis

**UAB ENTERING FRESHMEN DEMOGRAPHICS  
FALL 2008**

		Full-time		Part-time		Total	
		Number	Percent	Number	Percent	Number	Percent
<b>Total</b>		1,247	97.7%	30	2.3%	1,277	100.0%
<b>Gender</b>	Female	710	56.9%	21	70.0%	731	57.2%
	Male	537	43.1%	9	30.0%	546	42.8%
<b>Race</b>	White	782	62.7%	20	66.7%	802	62.8%
	Black	274	22.0%	6	20.0%	280	21.9%
	Asian / Pacific Islander	68	5.5%	2	6.7%	70	5.5%
	Hispanic	24	1.9%	0	0.0%	24	1.9%
	American Indian	9	0.7%	0	0.0%	9	0.7%
	Non-Resident Alien	18	1.4%	0	0.0%	18	1.4%
	Other / Multicultural	47	3.8%	0	0.0%	47	3.7%
	Unknown	25	2.0%	2	6.7%	27	2.1%
<b>Age</b>	Under 19	1,136	91.1%	16	53.3%	1,152	90.2%
	19-21	105	8.4%	9	30.0%	114	8.9%
	22-25	5	0.4%	2	6.7%	7	0.5%
	26-30	1	0.1%	2	6.7%	3	0.2%
	31-35	0	0.0%	0	0.0%	0	0.0%
	Over 35	0	0.0%	1	3.3%	1	0.1%
	Unknown	0	0.0%	0	0.0%	0	0.0%
	Average Age	18.1		20.3		18.1	
<b>Source</b>	Jefferson County	421	33.8%	23	76.7%	444	34.8%
	Other Metro Area Counties*	178	14.3%	2	6.7%	180	14.1%
	Other Alabama Counties	528	42.3%	3	10.0%	531	41.6%
	Other States	102	8.2%	2	6.7%	104	8.1%
	Other Countries	18	1.4%	0	0.0%	18	1.4%
<b>School/Unit</b>	Arts & Humanities	98	7.9%	3	10.0%	101	7.9%
	Business	109	8.7%	5	16.7%	114	8.9%
	Dentistry		0.0%		0.0%	0	0.0%
	Education	49	3.9%	2	6.7%	51	4.0%
	Engineering	137	11.0%	2	6.7%	139	10.9%
	Health Professions	158	12.7%	2	6.7%	160	12.5%
	Natural Sciences & Math	267	21.4%	3	10.0%	270	21.1%
	Social & Behav Sciences	110	8.8%	4	13.3%	114	8.9%
	Unclassified (General Stud.)	319	25.6%	9	30.0%	328	25.7%
Conditionally Admitted						60 (3.4% of class)	
In Campus Housing						785 (61% of class)	
Mean ACT						24.4	
Mean High School GPA						3.51	

Top Feeder High Schools: Hoover HS (46); Bob Jones HS (37); Hewitt-Trussville HS (32); Clay-Chalkville HS (31); Vestavia Hills HS (26); Spain Park HS (24); Oak Mountain HS (24); Gardendale HS (24); John Carroll Catholic (23); Homewood HS (23); Virgil I Grisson HS (22); Thompson HS (21); Pinson Valley HS (21); Sparkman HS (20).

\*Blount, Shelby, St. Clair, and Walker counties.

Source: Planning and Analysis

**UAB  
GRADUATE STUDENT DEMOGRAPHICS  
FALL 2008**

		Full-time		Part-time		Total	
		Number	Percent	Number	Percent	Number	Percent
<b>Total</b>		2,501	52.6%	2,254	47.4%	4,755	100.0%
<b>Gender</b>	Female	1,521	32.0%	1,533	32.2%	3,054	64.2%
	Male	980	20.6%	721	15.2%	1,701	35.8%
<b>Race</b>	White	1,569	33.0%	1,558	32.8%	3,127	65.8%
	Black	302	6.4%	380	8.0%	682	14.3%
	Asian / Pacific Islander	92	1.9%	69	1.5%	161	3.4%
	Hispanic	32	0.7%	42	0.9%	74	1.6%
	American Indian	11	0.2%	8	0.2%	19	0.4%
	Non-Resident Alien	415	8.7%	119	2.5%	534	11.2%
	Other / Multicultural	16	0.3%	3	0.1%	19	0.4%
	Unknown	64	1.3%	75	1.6%	139	2.9%
<b>Class</b>	Masters	1,496	31.5%	1,427	30.0%	2,923	61.5%
	Post Masters	9	0.2%	64	1.3%	73	1.5%
	Doctoral	948	19.9%	331	7.0%	1,279	26.9%
	Non-Degree Graduate	48	1.0%	432	9.1%	480	10.1%
<b>Age</b>	Under 19	0	0.0%	0	0.0%	0	0.0%
	19-21	29	0.6%	6	0.1%	35	0.7%
	22-25	1,047	22.0%	414	8.7%	1,461	30.7%
	26-30	763	16.0%	606	12.7%	1,369	28.8%
	31-35	324	6.8%	375	7.9%	699	14.7%
	Over 35	337	7.1%	853	17.9%	1,190	25.0%
	Unknown	1	0.0%	0	0.0%	1	0.0%
	Average Age	28.5		34.3		31.2	
<b>Source</b>	Jefferson County	660	13.9%	1,019	21.4%	1,679	35.3%
	Other Metro Area Counties*	182	3.8%	318	6.7%	500	10.5%
	Other Alabama Counties	568	11.9%	429	9.0%	997	21.0%
	Other States	673	14.2%	369	7.8%	1,042	21.9%
	Other Countries	415	8.7%	119	2.5%	534	11.2%
	Unknown	3	0.1%	0	0.0%	3	0.1%
<b>School/Unit</b>	Arts & Humanities	39	0.8%	44	0.9%	83	1.7%
	Business	108	2.3%	237	5.0%	345	7.3%
	Dentistry	0	0.0%	2	0.0%	2	0.0%
	Education	269	5.7%	523	11.0%	792	16.7%
	Engineering	124	2.6%	180	3.8%	304	6.4%
	Health Professions	638	13.4%	154	3.2%	792	16.7%
	Joint Health Sciences	434	9.1%	15	0.3%	449	9.4%
	Medicine	0	0.0%	0	0.0%	0	0.0%
	Natural Sciences & Mathematics	163	3.4%	27	0.6%	190	4.0%
	Nursing	203	4.3%	573	12.1%	776	16.3%
	Optometry	20	0.4%	7	0.1%	27	0.6%
	Public Health	311	6.5%	98	2.1%	409	8.6%
	Social & Behavioral Sciences	148	3.1%	72	1.5%	220	4.6%
	Unclassified	44	0.9%	322	6.8%	366	7.7%

\*Blount, Shelby, St. Clair, and Walker counties.

Source: Planning and Analysis

**UAB**  
**FIRST PROFESSIONAL STUDENT DEMOGRAPHICS\***  
**FALL 2008**

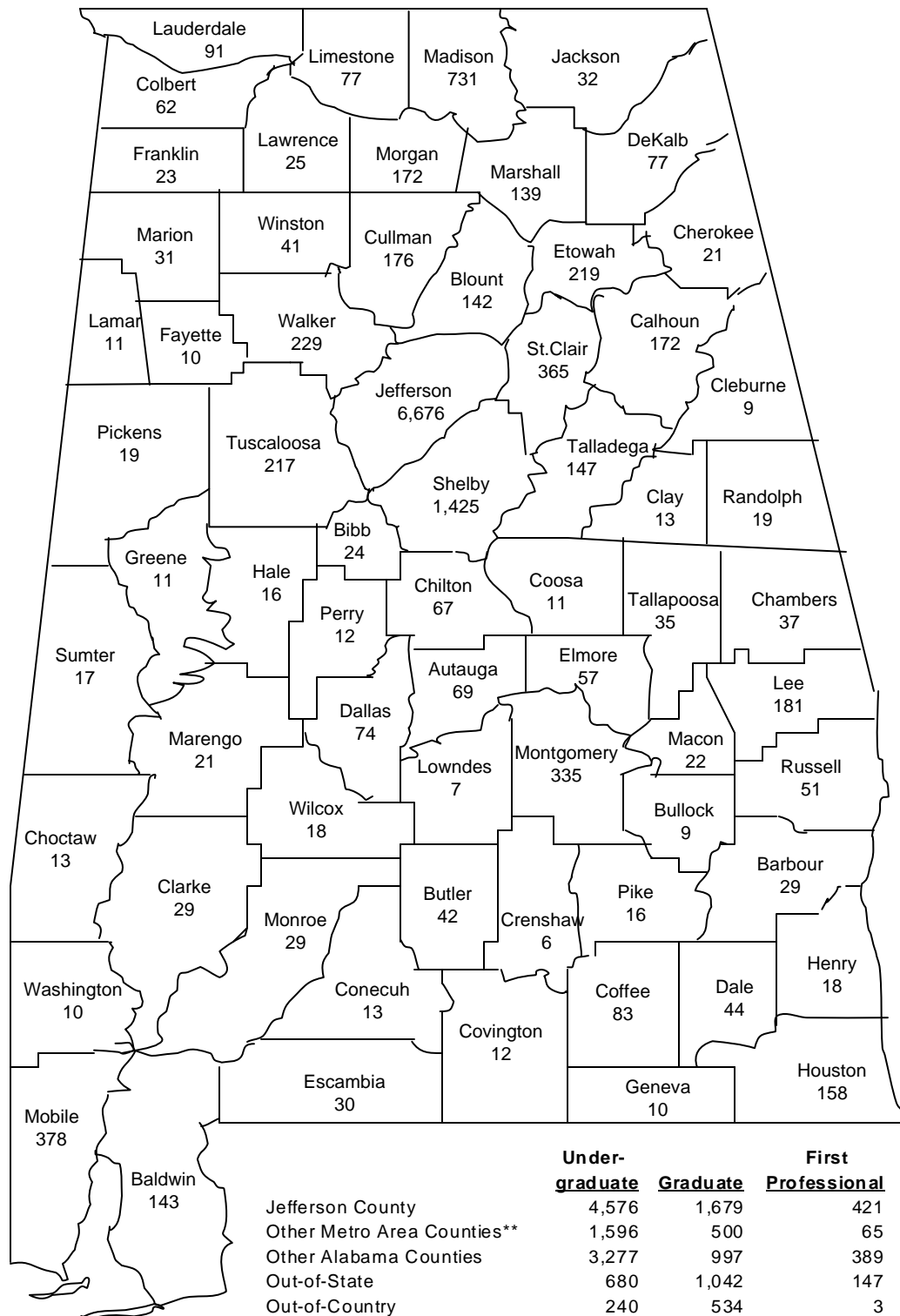
		Full-time		Part-time		Total	
		Number	Percent	Number	Percent	Number	Percent
<b>Total</b>		1,025	100.0%	0	0.0%	1,025	100.0%
<b>Gender</b>	Female	477	46.5%	0	0.0%	477	46.5%
	Male	548	53.5%	0	0.0%	548	53.5%
<b>Race</b>	White	779	76.0%	0	0.0%	779	76.0%
	Black	66	6.4%	0	0.0%	66	6.4%
	Asian Pacific Islander	112	10.9%	0	0.0%	112	10.9%
	Hispanic	8	0.8%	0	0.0%	8	0.8%
	American Indian	10	1.0%	0	0.0%	10	1.0%
	Non-Resident Alien	3	0.3%	0	0.0%	3	0.3%
	Other / Multicultural	22	2.1%	0	0.0%	22	2.1%
	Unknown	25	2.4%	0	0.0%	25	2.4%
<b>Class</b>	First Year	287	28.0%	0	0.0%	287	28.0%
	Second Year	285	27.8%	0	0.0%	285	27.8%
	Third Year	226	22.0%	0	0.0%	226	22.0%
	Fourth Year	227	22.1%	0	0.0%	227	22.1%
<b>Age</b>	Under 19	0	0.0%	0	0.0%	0	0.0%
	19-21	15	1.5%	0	0.0%	15	1.5%
	22-25	725	70.7%	0	0.0%	725	70.7%
	26-30	231	22.5%	0	0.0%	231	22.5%
	31-35	39	3.8%	0	0.0%	39	3.8%
	Over 35	15	1.5%	0	0.0%	15	1.5%
	Unknown	0	0.0%	0	0.0%	0	0.0%
	Average Age	25.9		N/A		25.9	
<b>Source</b>	Jefferson County	421	41.1%	0	0.0%	421	41.1%
	Other Metro Area Counties**	65	6.3%	0	0.0%	65	6.3%
	Other Alabama Counties	389	38.0%	0	0.0%	389	38.0%
	Other States	147	14.3%	0	0.0%	147	14.3%
	Other Countries	3	0.3%	0	0.0%	3	0.3%
	Unknown	0	0.0%	0	0.0%	0	0.0%
<b>School/Unit</b>	Dentistry	228	22.2%	0	0.0%	228	22.2%
	Medicine	623	60.8%	0	0.0%	623	60.8%
	Optometry	174	17.0%	0	0.0%	174	17.0%

\*Does not include 1,132 full-time advanced professionals.

\*\*Blount, Shelby, St. Clair, and Walker counties.

Source: Planning and Analysis

## UAB STUDENTS BY SOURCE, FALL 2008\*



	<u>Under-graduate</u>	<u>Graduate</u>	<u>First Professional</u>	<u>Total*</u>
Jefferson County	4,576	1,679	421	6,676
Other Metro Area Counties**	1,596	500	65	2,161
Other Alabama Counties	3,277	997	389	4,663
Out-of-State	680	1,042	147	1,869
Out-of-Country	240	534	3	777
Unknown	0	3	0	3
<b>TOTAL</b>	<b>10,369</b>	<b>4,755</b>	<b>1,025</b>	<b>16,149</b>

\*Totals do not include 1,132 advanced professionals.

\*\*Blount, Shelby, St. Clair, and Walker counties.



### UAB FALL ENROLLMENT BY SCHOOL 2003-2008

	<u>2003</u>	<u>2004</u>	<u>2005</u>	<u>2006</u>	<u>2007</u>	<u>2008</u>
Arts and Humanities	1,231	1,315	1,404	1,462	1,440	1,410
Business	2,183	2,068	2,070	2,088	1,893	1,870
Dentistry*	334	346	335	343	340	344
Education	1,683	1,715	1,620	1,582	1,574	1,574
Engineering	849	924	945	911	909	1,037
Health Professions	1,377	1,542	1,660	1,830	1,874	1,794
Joint Health Sciences	397	426	445	448	441	449
Medicine*	1,498	1,536	1,493	1,513	1,592	1,596
Natural Sciences and Mathematics	1,661	1,789	1,795	1,753	1,680	1,715
Nursing	547	569	629	731	860	1,249
Optometry*	193	197	203	197	203	214
Public Health	342	345	363	403	426	423
Social and Behavioral Sciences	1,936	1,985	2,005	2,010	1,922	1,786
Unclassified	<u>3,114</u>	<u>2,983</u>	<u>2,617</u>	<u>2,320</u>	<u>2,176</u>	<u>1,820</u>
TOTAL	17,345	17,740	17,584	17,591	17,330	17,281

\*Includes advanced professionals.

Source: UAB Headcount Enrollment Reports, 2003-2008

### UAB FALL ENROLLMENT BY CLASS 2003-2008

	<u>2003</u>	<u>2004</u>	<u>2005</u>	<u>2006</u>	<u>2007</u>	<u>2008</u>
Entering Freshmen	1,708	1,628	1,587	1,531	1,416	1,277
Other Freshmen	1,152	1,292	1,182	1,028	855	673
Sophomores	1,972	2,103	2,237	2,185	2,032	1,953
Juniors	2,199	2,329	2,426	2,404	2,366	2,283
Seniors	3,350	3,502	3,628	3,736	3,559	3,166
Other Undergraduates	665	587	410	400	568	1,017
Master's	2,546	2,468	2,381	2,546	2,686	2,923
Postmaster's	125	138	117	70	--	--
Educational Specialist*	--	--	--	--	60	73
Doctoral	955	1,065	1,124	1,155	1,163	1,279
Postdoctoral	10	1	1	0	0	0
Nondegree Graduates	689	603	512	531	540	480
First Professionals	986	977	967	975	1,001	1,025
Advanced Professionals	<u>988</u>	<u>1,047</u>	<u>1,012</u>	<u>1,030</u>	<u>1,084</u>	<u>1,132</u>
TOTAL	17,345	17,740	17,584	17,591	17,330	17,281

\*Prior to 2007, students were considered Postmaster's.

Source: Planning and Analysis

## UAB FALL ENROLLMENT BY STUDENT LEVEL 1969-2008

	Para- professional <sup>1</sup>	Under- graduate	Graduate	First Professional	Total for Reporting	Advanced Professional <sup>2</sup>	Total
1969	88	3,881	564	560	5,093	288	5,381
1970	154	5,001	745	603	6,503	280	6,783
1971	222	5,320	881	674	7,097	342	7,439
1972	232	6,233	1,272	749	8,486	482	8,968
1973	283	6,547	1,379	819	9,028	443	9,471
1974	435	6,821	1,849	778	9,883	461	10,344
1975	512	8,123	2,226	780	11,641	478	12,119
1976	512	8,471	2,192	867	12,042	497	12,539
1977	538	8,622	2,422	958	12,540	582	13,122
1978	624	9,004	2,528	1,071	13,227	572	13,799
1979	565	9,229	2,757	1,070	13,621	593	14,214
1980	484	9,618	2,684	1,068	13,854	594	14,448
1981	523	9,790	2,537	1,017	13,867	607	14,474
1982	498	10,170	2,280	946	13,894	636	14,530
1983	489	10,426	2,165	916	13,996	683	14,679
1984	482	9,914	2,228	893	13,517	683	14,200
1985	386	9,773	2,445	907	13,511	690	14,201
1986	376	9,594	2,675	893	13,538	710	14,248
1987	321	9,543	2,739	876	13,479	766	14,245
1988	334	9,723	2,939	890	13,886	769	14,655
1989	365	10,251	3,154	922	14,692	816	15,508
1990	397	10,688	3,335	936	15,356	930	16,286
1991	439	11,313	3,244	926	15,922	862	16,784
1992	442	11,234	3,126	940	15,742	916	16,658
1993 <sup>3</sup>	472	11,186	3,290	965	15,913	875	16,788
1994	137	10,668	3,571	986	15,362	890	16,252
1995	0	10,747	3,746	1,009	15,502	950	16,452
1996	0	10,692	3,595	987	15,274	891	16,165
1997	0	10,358	3,586	989	14,933	917	15,850
1998	0	10,433	3,621	1,002	15,056	960	16,016
1999	0	10,420	3,674	1,004	15,098	983	16,081
2000	0	10,331	3,641	979	14,951	970	15,921
2001	0	9,954	3,766	975	14,695	981	15,676
2002	0	10,501	4,096	982	15,579	937	16,516
2003	0	11,046	4,325	986	16,357	988	17,345
2004	0	11,441	4,275	977	16,693	1,047	17,740
2005	0	11,470	4,135	967	16,572	1,012	17,584
2006	0	11,284	4,302	975	16,561	1,030	17,591
2007	0	10,796	4,449	1,001	16,246	1,084	17,330
2008	0	10,369	4,755	1,025	16,149	1,132	17,281

NOTE: "Total for Reporting" is the total reported to state and federal agencies and included in documents such as surveys and questionnaires.

<sup>1</sup>The certificate programs in Health Professions were phased out beginning in 1994. Dental Assisting and Dental Lab Tech were eliminated in 1995; Dental Assisting was reinstated in Fall 2000.

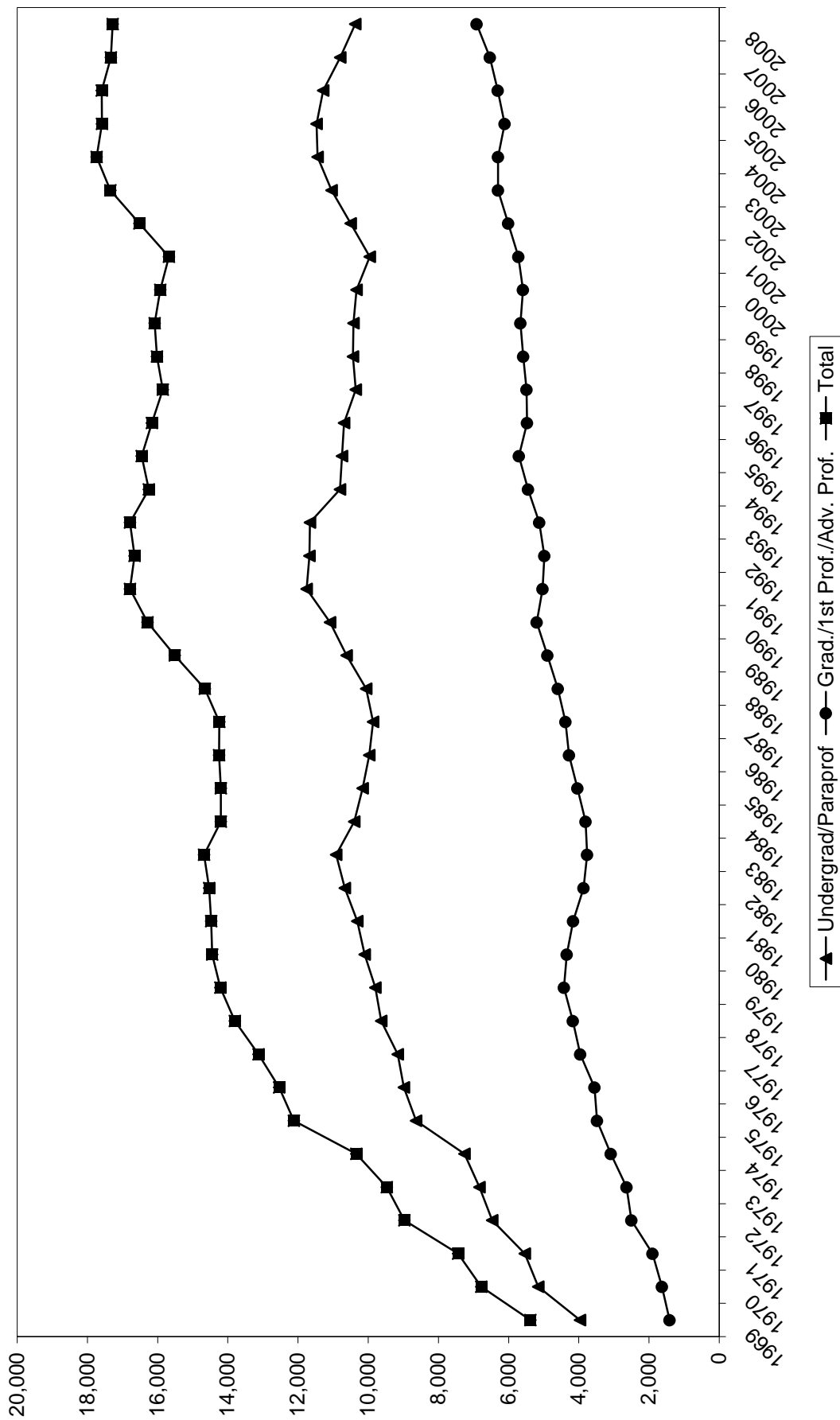
Students in the certificate programs in EMT (phased out in 2007) and reinstated Dental Assisting are included with undergraduates.

<sup>2</sup>Advanced Professionals are interns, residents, and postdoctoral fellows in the basic medical sciences plus students in postgraduate programs in Dentistry and Optometry.

<sup>3</sup>Beginning in 1993, students taking classes off campus are included in the headcount enrollment.

Source: UAB Headcount Enrollment Reports 1969-2008

# **UAB FALL HEADCOUNT ENROLLMENT** **1969-2008**



Note: Beginning in Fall 1993, figures include students enrolled off campus.

**UAB FALL ENROLLMENT  
FULL-TIME AND PART-TIME BY GENDER  
1983-2008**

<u>Year</u>	<u>Full-time</u>		<u>Part-time</u>		<u>Total</u>		<u>Percent Part-time</u>
	<u>Men</u>	<u>Women</u>	<u>Men</u>	<u>Women</u>	<u>Men</u>	<u>Women</u>	
1983	3,926	4,380	2,571	3,119	6,497	7,499	41%
1984	3,667	4,177	2,604	3,069	6,271	7,246	42%
1985	3,603	4,124	2,594	3,190	6,197	7,314	43%
1986	3,693	4,082	2,514	3,249	6,207	7,331	43%
1987	3,666	4,220	2,439	3,154	6,105	7,374	41%
1988	3,786	4,329	2,492	3,279	6,278	7,608	42%
1989	3,930	4,521	2,650	3,591	6,580	8,112	42%
1990	4,187	4,813	2,677	3,679	6,864	8,492	41%
1991	4,390	5,023	2,759	3,750	7,149	8,773	41%
1992	4,418	5,091	2,699	3,534	7,117	8,625	40%
1993 *	4,560	5,201	2,678	3,474	7,238	8,675	39%
1994	4,460	5,146	2,486	3,270	6,946	8,416	37%
1995	4,538	5,334	2,367	3,263	6,905	8,597	36%
1996	4,464	5,467	2,275	3,068	6,739	8,535	35%
1997	4,561	5,385	2,109	2,878	6,670	8,263	33%
1998	4,412	5,657	2,065	2,922	6,477	8,579	33%
1999	4,419	5,778	1,977	2,924	6,396	8,702	32%
2000	4,472	5,920	1,805	2,754	6,277	8,674	30%
2001	4,145	5,515	2,010	3,025	6,155	8,540	34%
2002	4,398	5,908	2,064	3,209	6,462	9,117	34%
2003	4,574	6,340	2,061	3,382	6,635	9,722	33%
2004	4,545	6,655	2,101	3,392	6,646	10,047	33%
2005	4,580	6,746	1,993	3,253	6,573	9,999	32%
2006	4,620	6,729	1,951	3,261	6,571	9,990	31%
2007	4,605	6,590	1,875	3,176	6,480	9,766	31%
2008	4,624	6,473	1,807	3,245	6,431	9,718	31%

**UAB FALL ENROLLMENT BY STUDENT SOURCE  
2004-2008**

	<u>2004</u>	<u>2005</u>	<u>2006</u>	<u>2007</u>	<u>2008</u>
Jefferson County	8,073	7,221	7,117	6,650	6,676
Other Metro Area Counties**	2,149	2,140	2,222	2,102	2,161
Other Alabama Counties	3,994	4,786	4,756	4,689	4,663
Out-of-State	1,468	1,527	1,592	1,734	1,869
Out-of-Country	1,009	895	874	1,071	777
Unknown	<u>0</u>	<u>3</u>	<u>0</u>	<u>0</u>	<u>3</u>
TOTAL	16,693	16,572	16,561	16,246	16,149

Note: Totals do not include advanced professionals.

\*Beginning in 1993, students taking classes off campus are included in the headcount enrollment.

\*\*Blount, Shelby, St. Clair, and Walker counties.

Source: Planning and Analysis

UNDERGRADUATE		Fall 2003	% of Total	Fall 2004	% of Total	Fall 2005	% of Total	Fall 2006	% of Total	Fall 2007	% of Total	Fall 2008	% of Total
Non-resident Alien		378	3.4%	339	3.0%	272	2.4%	268	2.4%	246	2.3%	240	2.3%
Black Non-Hispanic		3,534	32.0%	3,682	32.2%	3,630	31.6%	3,412	30.2%	3,120	28.9%	2,807	27.1%
American Indian/Alaskan Native		53	0.5%	44	0.4%	46	0.4%	50	0.4%	33	0.3%	42	0.4%
Asian or Pacific Islander		334	3.0%	367	3.2%	389	3.4%	450	4.0%	459	4.3%	457	4.4%
Hispanic		125	1.1%	125	1.1%	128	1.1%	146	1.3%	156	1.4%	177	1.7%
White Non-Hispanic		6,368	57.6%	6,642	58.1%	6,755	58.9%	6,706	59.4%	6,435	59.6%	6,252	60.3%
**Race/Ethnicity Unknown		254	2.3%	242	2.1%	250	2.2%	252	2.2%	347	3.2%	394	3.8%
<b>Total</b>		<b>11,046</b>	<b>100.0%</b>	<b>11,441</b>	<b>100.0%</b>	<b>11,470</b>	<b>100.0%</b>	<b>11,284</b>	<b>100.0%</b>	<b>10,796</b>	<b>100.0%</b>	<b>10,369</b>	<b>100.0%</b>
GRADUATE		Fall 2003	% of Total	Fall 2004	% of Total	Fall 2005	% of Total	Fall 2006	% of Total	Fall 2007	% of Total	Fall 2008	% of Total
Non-resident Alien		638	14.8%	667	15.6%	622	15.0%	604	14.0%	595	13.4%	534	11.2%
Black Non-Hispanic		647	15.0%	650	15.2%	654	15.8%	661	15.4%	647	14.5%	682	14.3%
American Indian/Alaskan Native		12	0.3%	20	0.5%	24	0.6%	20	0.5%	18	0.4%	19	0.4%
Asian or Pacific Islander		123	2.8%	117	2.7%	134	3.2%	140	3.3%	141	3.2%	161	3.4%
Hispanic		38	0.9%	47	1.1%	54	1.3%	57	1.3%	61	1.4%	74	1.6%
White Non-Hispanic		2,809	64.9%	2,729	63.8%	2,600	62.9%	2,768	64.3%	2,883	64.8%	3,127	65.8%
**Race/Ethnicity Unknown		58	1.3%	45	1.1%	47	1.1%	52	1.2%	104	2.3%	158	3.3%
<b>Total</b>		<b>4,325</b>	<b>100.0%</b>	<b>4,275</b>	<b>100.0%</b>	<b>4,135</b>	<b>100.0%</b>	<b>4,302</b>	<b>100.0%</b>	<b>4,449</b>	<b>100.0%</b>	<b>4,755</b>	<b>100.0%</b>
FIRST PROFESSIONAL		Fall 2003	% of Total	Fall 2004	% of Total	Fall 2005	% of Total	Fall 2006	% of Total	Fall 2007	% of Total	Fall 2008	% of Total
Non-resident Alien		7	0.7%	3	0.3%	1	0.1%	2	0.2%	2	0.2%	3	0.3%
Black Non-Hispanic		61	6.2%	65	6.7%	68	7.0%	61	6.3%	64	6.4%	66	6.4%
American Indian/Alaskan Native		7	0.7%	7	0.7%	9	0.9%	9	0.9%	10	1.0%	10	1.0%
Asian or Pacific Islander		116	11.8%	102	10.4%	92	9.5%	102	10.5%	107	10.7%	112	10.9%
Hispanic		7	0.7%	9	0.9%	11	1.1%	10	1.0%	8	0.8%	8	0.8%
White Non-Hispanic		784	79.5%	787	80.6%	780	80.7%	778	79.8%	770	76.9%	779	76.0%
**Race/Ethnicity Unknown		4	0.4%	4	0.4%	6	0.6%	13	1.3%	40	4.0%	47	4.6%
<b>Total</b>		<b>986</b>	<b>100.0%</b>	<b>977</b>	<b>100.0%</b>	<b>967</b>	<b>100.0%</b>	<b>975</b>	<b>100.0%</b>	<b>1,001</b>	<b>100.0%</b>	<b>1,025</b>	<b>100.0%</b>
UAB TOTAL		Fall 2003	% of Total	Fall 2004	% of Total	Fall 2005	% of Total	Fall 2006	% of Total	Fall 2007	% of Total	Fall 2008	% of Total
Non-resident Alien		1,023	6.3%	1,009	6.0%	895	5.4%	874	5.3%	843	5.2%	777	4.8%
Black Non-Hispanic		4,242	25.9%	4,397	26.3%	4,352	26.3%	4,134	25.0%	3,831	23.6%	3,555	22.0%
American Indian/Alaskan Native		72	0.4%	71	0.4%	79	0.5%	79	0.5%	61	0.4%	71	0.4%
Asian or Pacific Islander		573	3.5%	586	3.5%	615	3.7%	692	4.2%	707	4.4%	730	4.5%
Hispanic		170	1.0%	181	1.1%	193	1.2%	213	1.3%	225	1.4%	259	1.6%
White Non-Hispanic		9,961	60.9%	10,158	60.9%	10,135	61.2%	10,252	61.9%	10,088	62.1%	10,158	62.9%
**Race/Ethnicity Unknown		316	1.9%	291	1.7%	303	1.8%	317	1.9%	491	3.0%	599	3.7%
<b>Total</b>		<b>16,357</b>	<b>100.0%</b>	<b>16,693</b>	<b>100.0%</b>	<b>16,572</b>	<b>100.0%</b>	<b>16,561</b>	<b>100.0%</b>	<b>16,246</b>	<b>100.0%</b>	<b>16,149</b>	<b>100.0%</b>

\*Totals do not include advanced professionals.

\*\*Includes Multicultural and Other beginning Fall 2007.

Source: Planning and Analysis

# **UAB CREDIT HOUR PRODUCTION FALL 2008**

	<b>Lower Division Undergrad.<sup>1</sup></b>	<b>Upper Division Undergrad.<sup>2</sup></b>	<b>Graduate One<sup>3</sup></b>	<b>Graduate Two<sup>4</sup></b>	<b>Total</b>
Arts and Humanities	23,547	6,409	787	3	30,746
Business	5,684	8,506	2,781	74	17,045
Dentistry <sup>5</sup>	291				291
Education	2,188	5,243	5,479	211	13,121
Engineering	2,312	2,643	1,751	433	7,139
Health Professions	973	5,213	8,382	1,729	16,297
Joint Health Sciences			32	5,325	5,357
Medicine					
Natural Sciences and Mathematics	26,613	4,015	1,086	963	32,677
Nursing	292	5,578	4,347	1,011	11,228
Optometry (Vision Science)			79	218	297
Public Health	27	66	3,807	607	4,507
Social and Behavioral Sciences	17,013	7,681	1,258	842	26,794
Graduate School				730	730
Provost's Office <sup>6</sup>	481	51			532
ROTC/Cooperative Education	123	147			270
<b>TOTAL</b>	<b>79,544</b>	<b>45,552</b>	<b>29,789</b>	<b>12,146</b>	<b>167,031</b>

<sup>1</sup>Includes courses numbered 095-299.

<sup>2</sup>Includes courses numbered 300-499.

<sup>3</sup>Includes courses numbered 500-699 except in Education, where courses numbered 700-739 are included.

<sup>4</sup>Includes courses numbered 700-799.

<sup>5</sup>Undergraduate credit hours in Dentistry are generated by the Dental Assisting program. First professional programs in Medicine, Dentistry, and Optometry do not generate credit hours.

<sup>6</sup>Includes interdisciplinary hours or those hours generated by instructors not affiliated with an academic unit.

Source: Planning and Analysis, ACHE Credit Hour Production Reports

**UAB ANNUAL CREDIT HOUR PRODUCTION BY SCHOOL**  
**2001-02 through 2007-08**

	<u>2001-02</u>	<u>2002-03</u>	<u>2003-04</u>	<u>2004-05</u>	<u>2005-06</u>	<u>2006-07</u>	<u>2007-08</u>
<b>ARTS AND HUMANITIES</b>							
Lower Division Undergraduate	50,625	54,399	58,570	56,811	58,170	56,144	51,994
Upper Division Undergraduate	11,158	11,974	12,173	13,182	13,564	13,972	14,228
Graduate 1	1,395	1,353	1,855	1,979	2,051	2,056	1,963
Graduate 2	<u>21</u>	<u>30</u>	<u>24</u>	<u>24</u>	<u>0</u>	<u>0</u>	<u>0</u>
Total	63,199	67,756	72,622	71,996	73,785	72,172	68,185
<b>BUSINESS</b>							
Lower Division Undergraduate	13,405	12,957	13,266	12,969	14,854	14,563	13,413
Upper Division Undergraduate	20,029	22,331	22,511	22,070	20,456	20,671	20,194
Graduate 1	7,611	8,376	7,944	7,419	7,263	7,791	7,539
Graduate 2	<u>207</u>	<u>171</u>	<u>173</u>	<u>229</u>	<u>157</u>	<u>178</u>	<u>202</u>
Total	41,252	43,835	43,894	42,687	42,730	43,203	41,348
<b>DENTISTRY (DAST PROGRAM)</b>							
Lower Division Undergraduate	<u>533</u>	<u>1,067</u>	<u>588</u>	<u>1,011</u>	<u>688</u>	<u>888</u>	<u>795</u>
Total	533	1,067	588	1,011	688	888	795
<b>EDUCATION</b>							
Lower Division Undergraduate	4,250	4,802	4,481	4,131	4,520	5,253	5,414
Upper Division Undergraduate	13,886	13,011	11,927	11,488	11,776	13,353	12,812
Graduate 1	17,608	20,237	22,173	19,691	16,382	15,348	15,933
Graduate 2	<u>622</u>	<u>679</u>	<u>561</u>	<u>707</u>	<u>778</u>	<u>692</u>	<u>508</u>
Total	36,366	38,729	39,142	36,017	33,456	34,646	34,667
<b>ENGINEERING</b>							
Lower Division Undergraduate	3,427	3,426	3,331	3,766	4,020	4,150	4,349
Upper Division Undergraduate	5,065	5,246	4,859	5,074	5,603	5,911	6,036
Graduate 1	3,895	4,022	4,107	3,570	2,905	3,181	3,592
Graduate 2	<u>1,623</u>	<u>1,550</u>	<u>1,433</u>	<u>1,642</u>	<u>1,507</u>	<u>1,345</u>	<u>1,164</u>
Total	14,010	14,244	13,730	14,052	14,035	14,587	15,141
<b>HEALTH PROFESSIONS</b>							
Lower Division Undergraduate	948	1,069	1,197	1,212	1,308	1,086	1,542
Upper Division Undergraduate	11,997	12,813	13,811	15,349	15,236	15,116	14,361
Graduate 1	16,186	16,940	16,022	14,922	16,344	18,319	19,408
Graduate 2	<u>664</u>	<u>607</u>	<u>1,974</u>	<u>3,520</u>	<u>4,520</u>	<u>4,760</u>	<u>5,025</u>
Total	29,795	31,429	33,004	35,003	37,408	39,281	40,336
<b>JOINT HEALTH SCIENCES</b>							
Lower Division Undergraduate	0	0	0	0	0	0	42
Upper Division Undergraduate	75	0	0	0	0	0	0
Graduate 1	246	218	218	259	268	185	172
Graduate 2	<u>12,725</u>	<u>12,939</u>	<u>14,652</u>	<u>14,895</u>	<u>15,550</u>	<u>15,399</u>	<u>15,205</u>
Total	13,046	13,157	14,870	15,154	15,818	15,584	15,419
<b>MEDICINE (EMT PROGRAM)</b>							
Lower Division Undergraduate	962	653	585	888	1,012	577	0
Upper Division Undergraduate	<u>12</u>	<u>32</u>	<u>8</u>	<u>6</u>	<u>8</u>	<u>12</u>	<u>0</u>
Total	974	685	593	894	1,020	589	0

## UAB ANNUAL CREDIT HOUR PRODUCTION BY SCHOOL (CONTINUED)

	<u>2001-02</u>	<u>2002-03</u>	<u>2003-04</u>	<u>2004-05</u>	<u>2005-06</u>	<u>2006-07</u>	<u>2007-08</u>
<b>NATURAL SCIENCES AND MATHEMATICS</b>							
Lower Division Undergraduate	60,484	64,469	69,229	73,630	71,982	68,575	62,460
Upper Division Undergraduate	6,371	6,821	6,916	6,805	7,758	8,647	9,179
Graduate 1	3,206	3,250	3,202	3,049	2,866	2,640	2,522
Graduate 2	<u>2,290</u>	<u>2,538</u>	<u>2,504</u>	<u>2,550</u>	<u>2,437</u>	<u>2,503</u>	<u>2,515</u>
Total	<u>72,351</u>	<u>77,078</u>	<u>81,851</u>	<u>86,034</u>	<u>85,043</u>	<u>82,365</u>	<u>76,676</u>
<b>NURSING</b>							
Lower Division Undergraduate	0	0	0	0	0	93	72
Upper Division Undergraduate	7,966	8,935	11,111	11,314	12,392	13,228	14,478
Graduate 1	2,987	3,681	3,679	4,087	4,651	5,873	8,485
Graduate 2	<u>716</u>	<u>686</u>	<u>519</u>	<u>551</u>	<u>390</u>	<u>666</u>	<u>1213</u>
Total	<u>11,669</u>	<u>13,302</u>	<u>15,309</u>	<u>15,952</u>	<u>17,433</u>	<u>19,860</u>	<u>24,248</u>
<b>OPTOMETRY</b>							
Upper Division Undergraduate	2	0	0	0	0	0	0
Graduate 1	118	78	85	56	164	93	155
Graduate 2	<u>682</u>	<u>671</u>	<u>642</u>	<u>523</u>	<u>579</u>	<u>593</u>	<u>579</u>
Total	<u>802</u>	<u>749</u>	<u>727</u>	<u>579</u>	<u>743</u>	<u>686</u>	<u>734</u>
<b>PUBLIC HEALTH</b>							
Lower Division Undergraduate	0	0	0	0	0	33	48
Upper Division Undergraduate	0	0	0	0	66	195	147
Graduate 1	7,283	8,408	7,345	7,476	7,268	8,504	8,670
Graduate 2	<u>1,799</u>	<u>2,088</u>	<u>2,122</u>	<u>1,771</u>	<u>1,728</u>	<u>1,993</u>	<u>1,565</u>
Total	<u>9,082</u>	<u>10,496</u>	<u>9,467</u>	<u>9,247</u>	<u>9,062</u>	<u>10,725</u>	<u>10,430</u>
<b>SOCIAL AND BEHAVIORAL SCIENCES</b>							
Lower Division Undergraduate	39,634	40,267	43,049	44,240	41,487	38,454	36,393
Upper Division Undergraduate	19,162	19,824	19,047	20,458	20,947	19,568	19,480
Graduate 1	2,437	2,898	2,858	2,677	2,427	2,451	2,971
Graduate 2	<u>1,718</u>	<u>1,852</u>	<u>1,973</u>	<u>2,172</u>	<u>2,230</u>	<u>2,236</u>	<u>2,044</u>
Total	<u>62,951</u>	<u>64,841</u>	<u>66,927</u>	<u>69,547</u>	<u>67,091</u>	<u>62,709</u>	<u>60,888</u>
<b>ROTC/COOPERATIVE ED/PROVOST'S OFFICE</b>							
Lower Division Undergraduate	1,573	1,822	1,251	1,644	824	634	612
Upper Division Undergraduate	<u>381</u>	<u>408</u>	<u>282</u>	<u>189</u>	<u>240</u>	<u>264</u>	<u>353</u>
Total	<u>1,954</u>	<u>2,230</u>	<u>1,533</u>	<u>1,833</u>	<u>1,064</u>	<u>898</u>	<u>965</u>
<b>GRADUATE SCHOOL</b>							
Graduate 1	51	45	108	111	81	90	51
Graduate 2	<u>1,030</u>	<u>1,152</u>	<u>1,238</u>	<u>1,190</u>	<u>1,153</u>	<u>1,319</u>	<u>1,424</u>
Total	<u>1,081</u>	<u>1,197</u>	<u>1,346</u>	<u>1,301</u>	<u>1,234</u>	<u>1,409</u>	<u>1,475</u>
<b>TOTAL UAB</b>							
Lower Division Undergraduate	175,841	184,931	195,547	200,302	198,865	190,450	177,134
Upper Division Undergraduate	96,104	101,395	102,645	105,935	108,046	110,937	111,268
Graduate 1	63,023	69,506	69,596	65,296	62,670	66,531	71,461
Graduate 2	<u>24,097</u>	<u>24,963</u>	<u>27,815</u>	<u>29,774</u>	<u>31,029</u>	<u>31,684</u>	<u>31,444</u>
<b>GRAND TOTAL</b>	<b>359,065</b>	<b>380,795</b>	<b>395,603</b>	<b>401,307</b>	<b>400,610</b>	<b>399,602</b>	<b>391,307</b>

Note: First professional programs in Dentistry, Medicine, and Optometry do not generate credit hours.

Source: Planning and Analysis, ACHE Credit Hour Production Reports Fall 2001 through Summer 2008



## DEGREES OFFERED AT UAB

<u>CIP Code*/Degree Program</u>	<u>Undergraduate Degrees</u>	<u>Graduate and Professional Degrees</u>
<b>SCHOOL OF ARTS AND HUMANITIES</b>		
05.0201 African American Studies	B.A. <sup>8</sup>	
50.0701 Art	B.A., B.F.A.	
50.0703 Art History		M.A. <sup>1</sup>
09.0101 Communication Management		M.A.
09.0101 Communication Studies	B.A.	
23.0101 English	B.A.	M.A.
16.0101 Foreign Languages	B.A.	
50.0901 Music	B.A.	
38.0101 Philosophy	B.A.	
50.0501 Theatre	B.A.	
<b>SCHOOL OF BUSINESS</b>		
52.0301 Accounting	B.S.	M.Ac.
51.0701 Administration/Health Services		Ph.D.
52.0201 Business Administration		M.B.A.
52.0601 Economics	B.S.	
52.0801 Finance	B.S.	
52.0299 Industrial Distribution	B.S.	
52.1201 Information Systems	B.S.	
52.0201 Management	B.S.	
52.1401 Marketing	B.S.	
<b>SCHOOL OF DENTISTRY</b>		
51.0601 Dental Assisting	Certificate	
51.0401 Dentistry		D.M.D.
51.0501 Dentistry		M.S.
<b>SCHOOL OF EDUCATION</b>		
13.1302 Arts Education		M.A. in Education
13.1101 Counseling		M.A.
13.1210 Early Childhood Education	B.S.	M.A. in Education, Ph.D.
13.0101 Education		Ed.S.
13.0401 Educational Leadership		M.A. in Education, Ed.S., Ed.D. <sup>1</sup> , Ph.D. <sup>1</sup>
13.1202 Elementary Education	B.S.	M.A. in Education
13.1307 Health Education	B.S.	M.A. in Education
31.0599 Health Education/Promotion		Ph.D. <sup>1</sup>
13.1205 High School Education	B.S.	M.A. in Education
13.1314 Physical Education	B.S.	M.A. in Education
13.1001 Special Education	B.S.	M.A. in Education

## DEGREES OFFERED AT UAB (CONTINUED)

<u>CIP Code*/Degree Program</u>	<u>Undergraduate Degrees</u>	<u>Graduate and Professional Degrees</u>
<b>SCHOOL OF ENGINEERING</b>		
14.0101 Engineering		M.Eng
14.0501 Biomedical Engineering	B.S.B.M.E.	M.S.B.M.E., Ph.D.
14.0801 Civil Engineering	B.S.C.E.	M.S.C.E., Ph.D. <sup>6</sup>
14.0901 Computer Engineering		Ph.D. <sup>7</sup>
14.1001 Electrical Engineering	B.S.E.E.	M.S.E.E., Ph.D. <sup>2</sup>
14.9999 Interdisciplinary Engineering		Ph.D.
14.1801 Materials Engineering	B.S.Mt.E.	M.S.Mt.E., Ph.D. <sup>1</sup>
30.9999 Materials Science		Ph.D. <sup>3</sup>
14.1901 Mechanical Engineering	B.S.M.E.	M.S.M.E., Ph.D. <sup>2</sup>
<b>SCHOOL OF HEALTH PROFESSIONS</b>		
51.0701 Administration/Health Services		D.Sc., Ph.D.
51.9999 Health Sciences	B.S.	
51.1005 Clinical Laboratory Science		M.S.
51.3102 Clinical Nutrition and Dietetics		M.S.
51.1002 Cytotechnology	B.S.	
51.3101 Dietetic Internship	Certificate (Postbaccalaureate)	
51.1509 Genetic Counseling		M.S.
51.0701 Health Administration		M.S.H.A.
51.0799 Health Informatics		M.S.H.I.
51.0706 Health Information Management	B.S.	
51.1005 Medical Technology	B.S.	
51.0905 Nuclear Medicine Technology	B.S.	
51.1604 Nurse Anesthesia		M.N.A.
30.1901 Nutrition Sciences		Ph.D.
51.2306 Occupational Therapy		M.S.
51.2308 Physical Therapy		D.P.T.
51.0912 Physician Assistant Studies		M.S.P.A.S.
51.0908 Respiratory Therapy	B.S.	
<b>JOINT HEALTH SCIENCES (Schools of Dentistry and Medicine)</b>		
26.0102 Basic Medical Sciences		M.S.B.M.S.
26.0205 Biochemistry and Molecular Genetics		Ph.D.
26.0401 Cell Biology		Ph.D.
26.0902 Cellular and Molecular Physiology		Ph.D.
26.0806 Genetics		Ph.D.
26.0502 Microbiology		Ph.D.
26.0906 Neurobiology		Ph.D.
30.2401 Neuroscience	B.S.	
26.0910 Pathology		Ph.D.
26.1007 Pharmacology and Toxicology		Ph.D.
<b>SCHOOL OF MEDICINE</b>		
51.1201 Medicine		M.D.

## DEGREES OFFERED AT UAB (CONTINUED)

<u>CIP Code*/Degree Program</u>	<u>Undergraduate Degrees</u>	<u>Graduate and Professional Degrees</u>
<b>SCHOOL OF NATURAL SCIENCES AND MATHEMATICS</b>		
05.0201 African American Studies	B.A. <sup>8</sup>	
27.0301 Applied Mathematics		Ph.D. <sup>4</sup>
26.0101 Biology	B.S.	M.S., Ph.D.
40.0501 Chemistry	B.S.	M.S., Ph.D.
11.0101 Computer and Information Sciences	B.S.	M.S., Ph.D.
27.0101 Mathematics	B.S.	M.S.
30.0101 Natural Science	B.S.	
40.0801 Physics	B.S.	M.S., Ph.D.
<b>SCHOOL OF NURSING</b>		
51.1601 Nursing	B.S.N.	M.S.N.
51.1602 Nursing		D.N.P. <sup>4</sup>
51.1608 Nursing		Ph.D.
<b>SCHOOL OF OPTOMETRY</b>		
51.1701 Optometry		O.D.
26.0909 Vision Science		M.S., Ph.D.
<b>SCHOOL OF PUBLIC HEALTH</b>		
26.1102 Biostatistics		M.S., Ph.D.
51.2202 Environmental Health Sciences		Ph.D.
26.1309 Epidemiology		Ph.D.
31.0599 Health Education/Promotion		Ph.D. <sup>1</sup>
51.2201 Public Health		M.P.H., M.S.P.H., Dr.P.H.
<b>SCHOOL OF SOCIAL AND BEHAVIORAL SCIENCES</b>		
05.0201 African American Studies	B.A. <sup>8</sup>	
45.0201 Anthropology	B.A.	M.A. <sup>5</sup>
43.0199 Criminal Justice	B.S.	M.S.C.J.
52.0601 Economics	B.A.	
43.0106 Forensic Science		M.S.F.S.
54.0101 History	B.A.	M.A.
45.9999 International Studies	B.A.	
45.1101 Medical Sociology		Ph.D.
30.2401 Neuroscience	B.S.	
45.1001 Political Science	B.A.	
42.0101 Psychology	B.S.	M.A., Ph.D.
44.0401 Public Administration		M.P.A.
44.0701 Social Work	B.S.S.W.	
45.1101 Sociology	B.A.	M.A.

## DEGREES OFFERED AT UAB (CONTINUED)

\* Classification of Instructional Programs developed by the U.S. Department of Education's National Center for Education Statistics.

Note: Joint and shared programs are those in which UAB awards the degree. Cooperative programs are those in which students take classes at UAB but the degree is awarded by another institution.

<sup>1</sup> Joint program with the University of Alabama.

<sup>2</sup> Cooperative program with the University of Alabama and the University of Alabama in Huntsville.

<sup>3</sup> Joint interdisciplinary program with the University of Alabama and the University of Alabama in Huntsville.

<sup>4</sup> Joint program with the University of Alabama and the University of Alabama in Huntsville.

<sup>5</sup> Cooperative program with the University of Alabama.

<sup>6</sup> Joint program with the University of Alabama in Huntsville.

<sup>7</sup> Shared program with the University of Alabama in Huntsville.

<sup>8</sup> Shared program with the University of Alabama

### TOTAL DEGREES AVAILABLE

Certificates	2
Postbaccalaureate   1	
Subbaccalaureate   1	
Baccalaureate	50
Master's	46
Specialist's	2
Doctoral	36
First Professional	<u>3</u>
Total	139

**UAB DEGREES AWARDED BY SCHOOL**  
**1969-70 through 2007-08 <sup>1</sup>**

	<b>1969-70 - 1996-97</b>	<b>1997-98</b>	<b>1998-99</b>	<b>1999- 2000</b>	<b>2000-01</b>	<b>2001-02</b>	<b>2002-03</b>	<b>2003-04</b>	<b>2004-05</b>	<b>2005-06</b>	<b>2006-07</b>	<b>2007-08</b>	<b>Grand Total</b>
<b>ARTS AND HUMANITIES</b>													
Bachelor's	2,421	116	119	143	162	229	199	226	221	237	281	280	4,634
Master's	200	10	5	9	9	9	9	14	8	26	25	29	353
<b>BUSINESS <sup>2</sup></b>													
Bachelor's	6,218	237	297	297	321	287	286	334	378	331	293	334	9,613
Master's	2,072	206	192	165	159	166	149	153	179	166	146	144	3,897
<b>DENTISTRY</b>													
Certificates	461	0	0	0	0	13	11	21	12	25	12	21	576
Bachelor's	130	0	0	0	0	0	0	0	0	0	0	0	130
Master's	198	6	12	11	9	11	8	11	9	12	10	13	310
First Professional	1,574	55	51	57	54	56	54	56	56	56	58	51	2,178
<b>EDUCATION</b>													
Bachelor's	5,433	202	216	191	182	190	136	116	116	108	133	142	7,165
Master's	9,896	313	306	321	327	365	354	331	447	356	272	288	13,576
Postmaster's	1,655	26	34	25	31	32	60	37	50	59	29	28	2,066
Doctorates	104	20	7	15	12	8	20	9	9	13	17	17	251
<b>ENGINEERING</b>													
Bachelor's	2,127	102	91	82	98	96	73	74	63	76	101	117	3,100
Master's	624	39	49	30	50	71	91	88	96	78	76	74	1,366
Doctorates	49	10	7	7	10	7	11	8	6	19	15	13	162
<b>HEALTH PROFESSIONS</b>													
Certificates	9,245	20	21	24	25	14	23	34	11	33	21	14	9,485
Bachelor's	2,848	171	138	163	158	105	118	124	140	155	184	173	4,477
Master's	1,511	128	161	151	174	170	183	165	175	150	163	199	3,330
Doctorates <sup>2</sup>	50	7	4	6	2	6	5	9	5	17	46	41	198
<b>JOINT HEALTH SCIENCES</b>													
Master's	262	5	8	2	9	2	7	5	9	11	10	3	333
Doctorates	600	41	51	44	55	53	54	48	53	46	57	67	1,169
<b>MEDICINE</b>													
Certificates	0	0	0	0	0	0	6	0	0	0	0	0	6
First Professional	4,015	148	166	157	153	155	157	160	166	165	152	160	5,754

	1969-70 - 1996-97	1997-98	1998-99	1999- 2000	2000-01	2001-02	2002-03	2003-04	2004-05	2005-06	2006-07	2007-08	Grand Total
<b>NATURAL SCIENCES AND MATHEMATICS</b>													
Bachelor's	3,705	197	187	180	169	158	154	187	155	188	213	218	5,711
Master's	613	50	36	58	49	54	45	57	65	61	37	53	1,178
Doctorates	142	15	13	12	8	15	12	6	14	12	21	18	288
<b>NURSING</b>													
Bachelor's	4,971	143	114	133	110	114	96	111	155	163	193	193	6,496
Master's	2,263	68	72	90	92	73	69	44	65	62	83	94	3,075
Doctorates	289	19	8	16	5	12	17	6	10	7	1	4	394
<b>OPTOMETRY</b>													
Bachelor's	321	3	3	1	0	3	0	0	0	0	0	0	331
Master's	41	5	1	1	3	4	1	2	4	0	1	2	65
Doctorates	18	1	1	1	1	3	4	2	9	3	1	3	47
First Professional	778	38	35	40	39	34	39	41	36	40	39	34	1,193
<b>PUBLIC HEALTH <sup>3</sup></b>													
Master's	1,420	130	173	161	141	124	93	146	117	130	94	144	2,873
Doctorates	76	11	10	15	18	9	19	20	20	15	18	21	252
<b>SOCIAL AND BEHAVIORAL SCIENCES</b>													
Bachelor's	5,766	410	363	372	446	436	402	403	394	419	416	450	10,277
Master's	796	38	40	52	53	35	51	49	49	46	43	55	1,307
Doctorates	74	18	13	9	10	12	13	3	12	11	16	13	204
<b>TOTAL</b>													
Certificates	9,706	20	21	24	25	27	40	55	23	58	33	35	10,067
Bachelor's	33,940	1,581	1,528	1,562	1,646	1,618	1,464	1,575	1,622	1,677	1,814	1,907	51,934
Master's	19,896	998	1,055	1,051	1,075	1,084	1,060	1,065	1,223	1,098	960	1,098	31,663
Postmaster's	1,655	26	34	25	31	32	60	37	50	59	29	28	2,066
Doctorates	1,402	142	114	125	121	125	155	111	138	143	192	197	2,965
First Professional	6,367	241	252	254	246	245	250	257	258	261	249	245	9,125
<b>GRAND TOTAL</b>	<b>72,966</b>	<b>3,008</b>	<b>3,004</b>	<b>3,041</b>	<b>3,144</b>	<b>3,131</b>	<b>3,029</b>	<b>3,100</b>	<b>3,314</b>	<b>3,296</b>	<b>3,277</b>	<b>3,510</b>	<b>107,820</b>

<sup>1</sup> The federal reporting period for completions is July 1 through June 30.

<sup>2</sup> The Ph.D. degrees awarded in the Administration/Health Services program are awarded jointly by the Schools of Business and Health Professions.

<sup>3</sup> Prior to 1980-81, degrees in Public Health were earned in the School of Health Professions.

Source: HEGIS Degrees and Other Formal Awards Conferred and IPEDS Completions Reports

## UAB DEGREES CONFERRED JULY 1, 1969 - JUNE 30, 2008

<u>Year*</u>	<u>Bachelor's</u>	<u>Master's</u>	<u>Post Master's</u>	<u>Doctor's</u>	<u>D.M.D., M.D., O.D.</u>	<u>Certificates</u>	<u>Total</u>
1969-70	328	16	0	5	127	68	544
1970-71	498	93	0	18	122	42	773
1971-72	625	197	0	11	136	165	1,134
1972-73	821	346	17	19	150	142	1,495
1973-74	926	459	48	18	178	172	1,801
1974-75	957	610	130	17	317	503	2,534
1975-76	1,041	891	199	8	204	572	2,915
1976-77	1,138	861	162	26	174	438	2,799
1977-78	1,156	783	134	18	211	511	2,813
1978-79	1,180	958	73	21	252	642	3,126
1979-80	1,199	921	134	26	272	774	3,326
1980-81	1,289	928	90	30	285	483	3,105
1981-82	1,195	823	75	28	281	331	2,733
1982-83	1,200	753	51	40	266	373	2,683
1983-84	1,348	605	50	49	254	366	2,672
1984-85	1,379	608	49	41	244	381	2,702
1985-86	1,379	652	52	32	247	346	2,708
1986-87	1,347	625	53	41	237	375	2,678
1987-88	1,406	701	31	54	238	298	2,728
1988-89	1,313	846	20	75	222	266	2,742
1989-90	1,332	804	28	65	233	380	2,842
1990-91	1,324	971	20	95	244	413	3,067
1991-92	1,487	848	34	88	229	430	3,116
1992-93	1,604	842	19	108	243	435	3,251
1993-94	1,582	859	17	107	238	467	3,270
1994-95	1,610	869	58	97	255	292	3,181
1995-96	1,556	940	62	126	252	21	2,957
1996-97	1,720	1,087	49	139	256	20	3,271
1997-98	1,581	998	26	142	241	20	3,008
1998-99	1,528	1,055	34	114	252	21	3,004
1999-2000	1,562	1,051	25	125	254	24	3,041
2000-01	1,646	1,075	31	121	246	25	3,144
2001-02	1,618	1,084	32	125	245	27	3,131
2002-03	1,464	1,060	60	155	250	40	3,029
2003-04	1,575	1,065	37	111	257	55	3,100
2004-05	1,622	1,223	50	138	258	23	3,314
2005-06	1,677	1,098	59	143	261	58	3,296
2006-07	1,814	960	29	192	249	33	3,277
2007-08	1,907	1,098	28	197	245	35	3,510
Totals Awarded to Date	51,934	31,663	2,066	2,965	9,125	10,067	107,820

Note: Does not include degrees awarded by the School of Education in Israel.

\*The federal reporting period for completions is July 1 through June 30.

Source: HEGIS Degrees and Other Formal Awards Conferred and IPEDS Completions Reports

# UAB REQUIRED STUDENT TUITION AND FEES FALL 2008

<u>Program/Fee</u>	<u>In-State</u>	<u>Out-of-State</u>
<b><u>Undergraduate and Graduate Programs</u></b>		
<b>General Tuition Fee (Per Credit Hour Charges):</b>		
<u>Undergraduates taking courses in:</u>		
Schools other than Health Professions, Nursing, or Public Health	\$158	\$395
Health Professions	192	480
Nursing	175	438
Public Health	164	410
<u>Graduates taking courses in:</u>		
Schools other than Health Professions, Nursing, or Public Health	\$204	\$510
Health Professions	269	673
Nursing	248	620
Public Health	212	530
<b>Building Fee for students taking courses in:</b>		
Arts and Humanities, Business, Education, Engineering, Natural Sciences and Mathematics, Social and Behavioral Sciences, and Health Professions:		
Flat Fee per Semester plus	\$34	\$34
Per Credit Hour Charge	3	3
Joint Health Sciences, Nursing, and Public Health		
Flat Fee per Semester	\$34	\$34
<b>Student Service Fee<sup>1</sup></b>		
Flat Fee per Semester plus	\$42	\$42
Per Credit Hour Charge	11	11
<b>Student Recreation Center Fee<sup>1</sup></b>		
Flat fee per term: Less than 12 hours <sup>2</sup>	\$48	\$48
Flat fee per term: 12 hours or more <sup>3</sup>	\$72	\$72
<b>Learning Resource Fee for students taking courses in:</b>		
<b>(Per Credit Hour Charges)</b>		
A&H, NSM, SBS <sup>4</sup>	\$10	\$10
Business, Education, Engineering, and Public Health	14	14
Health Professions and Nursing	12	12
Credit-hour courses in schools other than the above	5	5
<b>Campus Dining Fee (Charged to Undergraduates Only):</b>		
Flat fee per term for students enrolled for 12 or more hours <sup>5</sup>	\$225	\$225
<b><u>Dental Assisting Certificate Program in Dentistry per Semester</u></b>		
Tuition	\$1,253	\$3,133
Student Service Fee	174	174
Building Fee	34	34
Student Recreation Center Fee <sup>6</sup>	72	72
Technology Fee	60	60
Campus Dining Fee <sup>5</sup>	225	225
<b><u>First Professional Programs</u></b>		
<b>Medicine per Year:</b>		
General Tuition	\$15,254	\$45,762
Building Fee	889	889
Student Recreation Center Fee	144	144
Student Service Fee	444	444



## UAB REQUIRED STUDENT TUITION AND FEES (CONTINUED)

<u>Program/Fee</u>	<u>In-State</u>	<u>Out-of-State</u>
<b><u>First Professional Programs (Continued)</u></b>		
<b>Dentistry per Semester (except as noted):</b>		
General Tuition - 1st & 2nd Year Students	\$6,638	\$19,914
General Tuition - 3rd Year Students	7,007	21,021
General Tuition - 4th Year Students	7,745	23,235
Building Fee	447	447
Student Recreation Center Fee (annual)	144	144
Student Service Fee (annual)	444	444
Technology Fee	129	129
<b>Optometry per Semester (except as noted):<sup>7</sup></b>		
General Tuition	\$4,447	\$13,341
Building Fee	592	592
Student Recreation Center Fee (annual) <sup>8</sup>	144	144
Student Service Fee (annual) <sup>8</sup>	444	444
Technology Fee	115	115

### TOTAL ANNUAL REQUIRED TUITION AND FEES FOR FULL-TIME STUDENTS<sup>9</sup>

	<u>In-State</u>	<u>Out-of-State</u>
Undergraduates taking 24 semester credit hours per year in:		
A&H, NSM, SBS <sup>4</sup>	\$4,664	\$10,352
Business, Education, and Engineering	4,760	10,448
Health Professions	5,528	12,440
Nursing	5,048	11,360
Graduate students taking 18 semester credit hours per year in:		
A&H, NSM, SBS <sup>4</sup>	\$4,352	\$9,860
Business, Education, and Engineering	4,424	9,932
Health Professions	5,558	12,830
Nursing	5,126	11,822
Public Health	4,514	10,238
All other Graduate Programs	4,208	9,716
Dental Assisting Students <sup>10</sup>	\$4,767	\$10,406
First Professionals in:		
Dentistry <sup>11</sup> - 1st & 2nd Year students	\$15,016	\$41,568
Dentistry <sup>11</sup> - 3rd Year students	15,754	43,782
Dentistry <sup>11</sup> - 4th Year students	17,230	48,210
Medicine <sup>12</sup>	16,731	47,239
Optometry <sup>13</sup>	16,258	42,940

<sup>1</sup>For all students except First Professionals and students enrolled in the Dental Assisting Program.

<sup>2</sup>Students who enroll for less than 12 hours for the summer term will be charged \$40 (versus \$48 for fall and spring).

<sup>3</sup>Students who enroll for 12 hours or more for the summer term will be charged \$60 (versus \$72 for fall and spring).

<sup>4</sup>Arts and Humanities, Natural Sciences & Mathematics, and Social & Behavioral Sciences.

<sup>5</sup>Flat fee per term charged during the Fall and Spring semesters to all undergraduates enrolled for 12 or more hours.

<sup>6</sup>Dental Assisting students who enroll for the summer will be charged the summer term fee of \$60 (vs. \$72 for fall and spring).

<sup>7</sup>School of Optometry is converting to a new semester system for its academic calendar. For 2008-09, only the first year students are fully converted and paying tuition and fees on a semester basis. The second, third, and fourth year students will be fully converted by June 2009 and begin paying tuition and fees on a semester basis at that time.

<sup>8</sup>Optometry Students will be charged a student recreation center fee of \$60 and a student service fee of \$148 in the summer.

<sup>9</sup>Excludes the campus dining fee which is required for undergraduates enrolling for 12 hours or more during the fall and spring semesters. Additional fees may be assessed depending upon each individual student's coursework.

<sup>10</sup>Year-round program, assumes three terms (fall, spring and summer) per year.

<sup>11</sup>Assumes two semesters per year.

<sup>12</sup>Quoted on an annual basis. Additional charges will apply to students who must extend attendance briefly beyond their current academic year to complete course requirements.

<sup>13</sup>Assumes three terms per year since three out of four Optometry classes enroll for three terms per year.

Source: University of Alabama Board of Trustees Tuition and Fee Resolutions

# **UAB STUDENT AID FUNDS AVAILABLE** **2001-02 through 2007-08**

	2001-02	2002-03	2003-04	2004-05	2005-06	2006-07	2007-08
College Work Study	\$1,441,083	\$1,650,489	\$1,695,955	\$1,535,691	\$1,392,367	\$1,118,982	\$944,373
Federal Perkins Loan	2,712,489	3,119,592	3,177,837	3,244,930	2,188,764	3,347,479	2,682,902
Supplemental Educational Opportunity Grant	907,526	702,568	732,660	736,416	821,815	1,122,538	1,102,610
Pell Grants	7,368,082	8,610,016	9,797,533	9,963,039	9,020,274	8,672,087	8,864,686
Health Professional Loans	651,221	299,562	790,364	336,360	260,661	544,648	911,117
Institutional Funds*	34,656,154	35,318,975	33,422,722	37,168,840	44,226,337	48,090,000	52,688,888
Scholarship Funds					20,034,882	22,390,573	27,309,310
Institutional Employment					24,191,455	25,699,427	25,379,578
State Funds**	987,942	570,492	415,648	294,667	402,205	380,219	1,340,798
Private Funds	2,816,537	3,465,198	4,353,458	5,606,579	7,195,179	7,364,071	6,890,048
Other Government Grants	69,772	47,514	40,949	44,401	125,500	457,877	263,065
Federal Direct Loans	49,864,568	55,283,971	62,474,818	68,613,970	72,639,912	70,890,070	82,837,408
Federal Direct Subsidized Loan (need-based)					32,893,739	30,972,823	33,347,655
Federal Direct Unsubsidized Loan (non-need)					34,906,925	34,163,439	43,722,083
Federal Direct Parent Loan (PLUS) (non-need)					4,839,248	5,753,808	3,769,860
Federal Direct Grad PLUS (non-need)							1,997,810
<b>Total Funds</b>	<b>\$101,475,374</b>	<b>\$109,068,377</b>	<b>\$116,901,944</b>	<b>\$127,544,893</b>	<b>\$138,253,014</b>	<b>\$141,987,971</b>	<b>\$158,525,895</b>
<b>Percent Change from Previous Year</b>	<b>+15%</b>	<b>+7%</b>	<b>+7%</b>	<b>+9%</b>	<b>+8%</b>	<b>+3%</b>	<b>+12%</b>
Unduplicated Number of Recipients	9,090	10,023	11,114	11,523	11,412	11,391	11,334
Percent Change from Previous Year	2%	10%	11%	4%	-1%	0%	-1%
Unduplicated Number of Applicants	15,021	16,009	16,762	17,186	18,711	16,495	15,797
Percent Change from Previous Year	-3%	7%	5%	3%	9%	-12%	-4%

Note: Data is for federal years, July through June.

\*Includes institutional employment.

\*\*Includes state funded scholarships awarded to UAB students in Dentistry, Medicine, and Optometry.

Sources: Office of Financial Aid, Office of Human Resource Management Information Systems

## **UAB ATHLETICS**

The University of Alabama at Birmingham initiated an intercollegiate varsity athletic program in 1978. UAB now participates as a Division I member of the NCAA. Through the 1990-91 season, UAB was a member of the Sun Belt Conference. In 1991, UAB became a charter member of the Great Midwest Conference. In 1995, UAB joined the newly created Conference USA. The Blazers became a football member of Conference USA in the 1999 season.

### **Director of Athletics**

Brian Mackin

#### **Men's Programs**

Baseball  
Basketball  
Football  
Golf  
Soccer  
Tennis

#### **Head Coach**

Brian Shoop  
Mike Davis  
Neil Callaway  
Alan Kaufman  
Mike Getman  
Derek Tarr

#### **Women's Programs**

Basketball  
Track & Field/Cross-Country  
Golf  
Rifle  
Soccer  
Softball  
Synchronized Swimming  
Tennis  
Volleyball

#### **Head Coach**

Audra Smith  
Ray Stanfield  
Kim Wilcox  
Lori Goodwin  
Paul Harbin  
Marla Townsend  
Lisa Riddell  
Krissy Hall  
Kerry Messersmith

Source: UAB Athletics Sports Information

# **FACULTY AND STAFF**

## UAB WORK FORCE FY 2008-09\*

Organizational Area	Full-time		Part-time		Total		Grand Total
	Men	Women	Men	Women	Men	Women	
University	3,402	4,563	1,452	2,147	4,854	6,710	11,564
Hospital	1,596	4,161	211	1,118	1,807	5,279	7,086
<b>TOTAL</b>	<b>4,998</b>	<b>8,724</b>	<b>1,663</b>	<b>3,265</b>	<b>6,661</b>	<b>11,989</b>	<b>18,650</b>

Job Category	Full-time		Part-time		Total		Grand Total
	Men	Women	Men	Women	Men	Women	
Executive/Administrative	180	155	3	2	183	157	340
Faculty**	1,320	770	87	72	1,407	842	2,249
Professional Nonfaculty	2,074	4,102	560	1,333	2,634	5,435	8,069
Secretarial/Clerical	193	1,820	780	1,453	973	3,273	4,246
Technical/Paraprofessional	484	852	113	172	597	1,024	1,621
Service Maintenance	412	1,015	98	225	510	1,240	1,750
Skilled Crafts	335	10	22	8	357	18	375
<b>TOTAL</b>	<b>4,998</b>	<b>8,724</b>	<b>1,663</b>	<b>3,265</b>	<b>6,661</b>	<b>11,989</b>	<b>18,650</b>

Job Category	Nonres Alien	American Indian	Asian	Black	Hispanic	White	Other/ Unknown	Total
Executive/Administrative	1	1	1	45	2	288	2	340
Faculty**	74	7	281	116	63	1,707	1	2,249
Professional Nonfaculty	691	9	393	1,336	79	5,546	15	8,069
Secretarial/Clerical	170	8	110	2,115	27	1,795	21	4,246
Technical/Paraprofessional	20	3	34	660	16	885	3	1,621
Service Maintenance	4	0	6	1,423	3	313	1	1,750
Skilled Crafts	0	1	1	118	0	255	0	375
<b>TOTAL</b>	<b>960</b>	<b>29</b>	<b>826</b>	<b>5,813</b>	<b>190</b>	<b>10,789</b>	<b>43</b>	<b>18,650</b>

\*These figures include student workers, hospital residents, postdoctoral employees, and adjunct instructors.

\*\*Employees who also have faculty appointments are included in their primary occupational classification.

Source: Office of Human Resource Management Data Systems, data as of October 31, 2008

**UAB WORK FORCE BY AREA, STATUS, GENDER, AND JOB CATEGORY  
2002-03 through 2008-09**

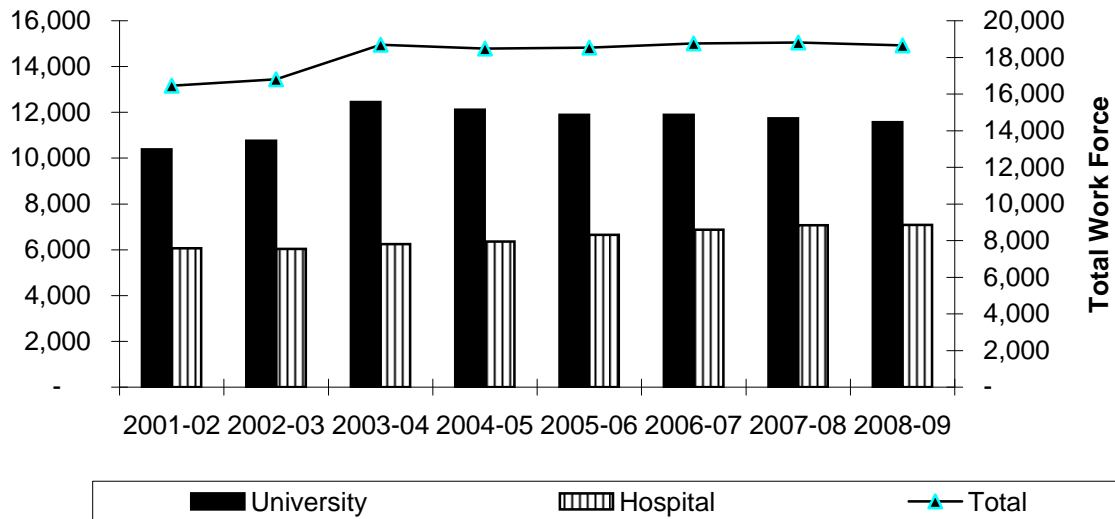
	<b>2002-03</b>	<b>2003-04</b>	<b>2004-05</b>	<b>2005-06*</b>	<b>2006-07</b>	<b>2007-08</b>	<b>2008-09</b>
<b>By Area*</b>							
University	10,764	12,445	12,120	11,887	11,895	11,739	11,564
Hospital	6,032	6,251	6,361	6,650	6,870	7,069	7,086
Total	16,796	18,696	18,481	18,537	18,765	18,808	18,650
<b>By Status</b>							
Full-time	12,649	12,944	12,847	13,028	13,423	13,608	13,722
Part-time	4,147	5,752	5,634	5,509	5,342	5,200	4,928
Total	16,796	18,696	18,481	18,537	18,765	18,808	18,650
<b>By Gender</b>							
Men	5,937	6,801	6,526	6,568	6,521	6,640	6,661
Women	10,859	11,895	11,955	11,969	12,244	12,168	11,989
Total	16,796	18,696	18,481	18,537	18,765	18,808	18,650
<b>By Job Category</b>							
Executive/Administrative	316	295	267	280	294	334	340
Faculty	2,016	2,630	2,059	2,118	2,212	2,248	2,249
Professional Nonfaculty	7,067	7,496	7,574	7,537	7,722	7,981	8,069
Secretarial/Clerical	4,023	4,678	4,833	4,782	4,707	4,446	4,246
Technical/Paraprofessional	1,474	1,606	1,697	1,708	1,665	1,648	1,621
Service Maintenance	1,573	1,605	1,664	1,701	1,799	1,770	1,750
Skilled Crafts	327	386	387	411	366	381	375
Total	16,796	18,696	18,481	18,537	18,765	18,808	18,650

NOTES: The increase in workforce size in 2003-04 is the result of the inclusion of individuals formerly paid by requisition (such as adjunct/supplemental instructors) and therefore not previously included in employee counts. For questions, please contact the UAB Director of Payroll Services.

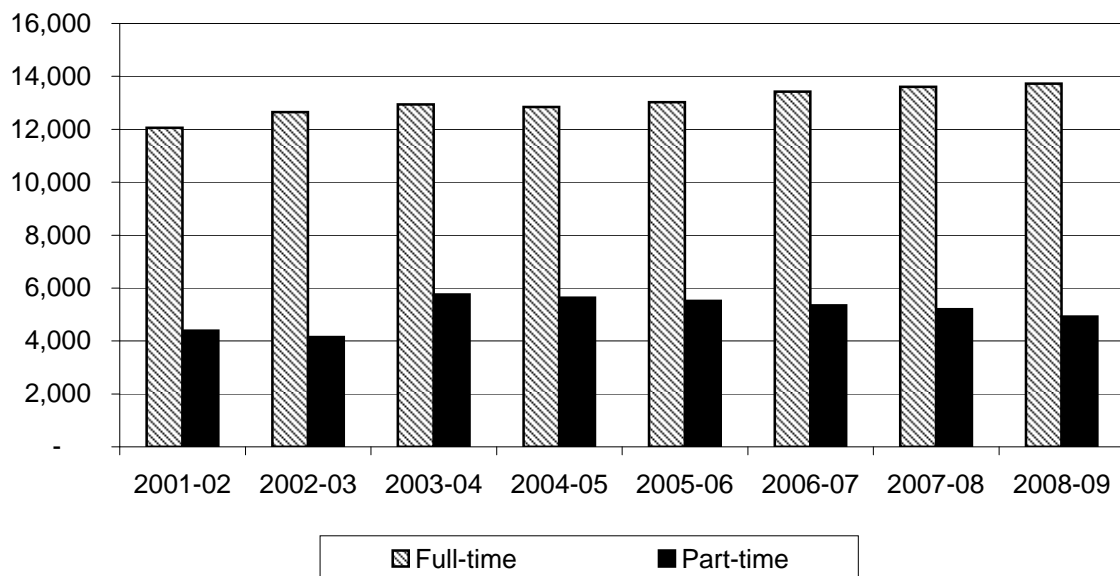
\*In 2005-06, employees of the Health System were included in Hospital counts.

Source: Office of Human Resource Management Data Systems, data as of October of each year

## UAB WORK FORCE BY AREA 2001-02 through 2008-09



## UAB WORK FORCE BY STATUS 2001-02 through 2008-09



## UAB FULL-TIME WORK FORCE AND PAYROLL 1998-2008

### FULL-TIME WORK FORCE

<u>Year</u>	<u>Full-time Nonfaculty</u>	<u>Full-time Faculty</u>	<u>Total Full-time Work Force</u>	<u>Change from Previous Year</u>
1998	8,469	1,643	10,112	-1.1%
1999	9,324	1,688	11,012	8.9%
2000	9,393	1,727	11,120	1.0%
2001	10,220	1,839	12,059	8.4%
2002	10,768	1,881	12,649	4.9%
2003	11,011	1,933	12,944	2.3%
2004	10,948	1,899	12,847	-0.7%
2005	11,067	1,961	13,028	1.4%
2006	11,374	2,049	13,423	3.0%
2007	11,515	2,093	13,608	1.4%
2008	11,632	2,090	13,722	0.8%

Source: Office of Human Resources Management Information Systems, Compliance Statistics as of  
October of each year

### PAYROLL

<u>Year</u>	<u>Payroll</u>	<u>Change from Previous Year</u>	
		<u>Amount</u>	<u>Percent</u>
1998	503,859,895	37,037,212	7.9%
1999	529,747,149	25,887,254	5.1%
2000	559,429,640	29,682,491	5.6%
2001	590,018,287	30,588,647	5.5%
2002	618,950,006	28,931,719	4.9%
2003	664,308,102	45,358,096	7.3%
2004	693,791,536	29,483,434	4.4%
2005	734,493,856	40,702,320	5.9%
2006	774,113,881	39,620,025	5.4%
2007	821,085,544	46,971,663	6.1%
2008	853,066,214	31,980,670	3.9%

Source: UAB Payroll Department Calendar Year Total (does not include fringe benefits)



**UAB FULL-TIME FACULTY\* BY RANK, GENDER, AND TENURE STATUS  
FALL 2008**

<u>School/Unit</u>	<u>MEN</u>		<u>WOMEN</u>		<u>TOTAL</u>	
	<u>Number</u>	<u>Tenured</u>	<u>Number</u>	<u>Tenured</u>	<u>Number</u>	<u>Tenured</u>
<b>ARTS AND HUMANITIES</b>						
Professor	23	23	7	7	30	30
Associate	23	19	17	16	40	35
Assistant	15	0	18	0	33	0
Instructor	6	0	9	0	15	0
Other	0	0	0	0	0	0
TOTAL	67	42	51	23	118	65
<b>BUSINESS</b>						
Professor	18	17	1	1	19	18
Associate	10	9	7	7	17	16
Assistant	8	0	4	1	12	1
Instructor	8	0	1	0	9	0
Other	0	0	1	0	1	0
TOTAL	44	26	14	9	58	35
<b>DENTISTRY</b>						
Professor	17	15	3	3	20	18
Associate	14	6	6	0	20	6
Assistant	10	1	9	0	19	1
Instructor	1	0	4	0	5	0
Other	1	0	0	0	1	0
TOTAL	43	22	22	3	65	25
<b>EDUCATION</b>						
Professor	6	6	4	3	10	9
Associate	8	7	18	17	26	24
Assistant	4	0	15	0	19	0
Instructor	0	0	3	0	3	0
Other	0	0	0	0	0	0
TOTAL	18	13	40	20	58	33
<b>ENGINEERING</b>						
Professor	21	16	3	3	24	19
Associate	17	13	3	2	20	15
Assistant	17	0	2	0	19	0
Instructor	2	0	1	0	3	0
Other	0	0	0	0	0	0
TOTAL	57	29	9	5	66	34

\*Figures include employees with full-time regular faculty appointments.

# **UAB FULL-TIME FACULTY\* (CONTINUED)**

<u>School/Unit</u>	<u>MEN</u>		<u>WOMEN</u>		<u>TOTAL</u>	
	<u>Number</u>	<u>Tenured</u>	<u>Number</u>	<u>Tenured</u>	<u>Number</u>	<u>Tenured</u>
<b>HEALTH PROFESSIONS</b>						
Professor	17	14	8	8	25	22
Associate	13	6	15	7	28	13
Assistant	18	0	24	0	42	0
Instructor	3	0	5	0	8	0
Other	0	0	0	0	0	0
TOTAL	51	20	52	15	103	35
<b>JOINT HEALTH SCIENCES</b>						
Professor	80	76	21	17	101	93
Associate	33	20	15	8	48	28
Assistant	48	0	31	1	79	1
Instructor	7	0	2	0	9	0
Other	0	0	0	0	0	0
TOTAL	168	96	69	26	237	122
<b>MEDICINE</b>						
Professor	218	179	52	38	270	217
Associate	153	55	71	21	224	76
Assistant	219	0	157	1	376	1
Instructor	20	0	24	0	44	0
Other	1	0	0	0	1	0
TOTAL	611	234	304	60	915	294
<b>NATURAL SCIENCES AND MATHEMATICS</b>						
Professor	33	33	4	3	37	36
Associate	24	23	4	1	28	24
Assistant	17	0	2	1	19	1
Instructor	4	0	2	0	6	0
Other	0	0	0	0	0	0
TOTAL	78	56	12	5	90	61
<b>NURSING</b>						
Professor	1	1	14	10	15	11
Associate	0	0	9	2	9	2
Assistant	3	0	24	3	27	3
Instructor	3	0	24	0	27	0
Other	0	0	0	0	0	0
TOTAL	7	1	71	15	78	16
<b>OPTOMETRY</b>						
Professor	16	16	2	0	18	16
Associate	10	6	6	1	16	7
Assistant	3	0	9	0	12	0
Instructor	0	0	0	0	0	0
Other	0	0	0	0	0	0
TOTAL	29	22	17	1	46	23

\*Figures include employees with full-time regular faculty appointments.

# **UAB FULL-TIME FACULTY\* (CONTINUED)**

<u>School/Unit</u>	<u>MEN</u>		<u>WOMEN</u>		<u>TOTAL</u>	
	<u>Number</u>	<u>Tenured</u>	<u>Number</u>	<u>Tenured</u>	<u>Number</u>	<u>Tenured</u>
<b>PUBLIC HEALTH</b>						
Professor	15	13	7	7	22	20
Associate	17	12	12	7	29	19
Assistant	11	0	17	0	28	0
Instructor	0	0	1	0	1	0
Other	0	0	1	0	1	0
TOTAL	43	25	38	14	81	39
<b>SOCIAL AND BEHAVIORAL SCIENCES</b>						
Professor	21	21	5	5	26	26
Associate	18	17	10	10	28	27
Assistant	17	0	20	0	37	0
Instructor	0	0	2	0	2	0
Other	0	0	0	0	0	0
TOTAL	56	38	37	15	93	53
<b>LISTER HILL LIBRARY OF THE HEALTH SCIENCES</b>						
Professor	1	0	0	0	1	0
Associate	1	0	3	0	4	0
Assistant	4	0	4	0	8	0
Instructor	2	0	3	0	5	0
Other	0	0	0	0	0	0
TOTAL	8	0	10	0	18	0
<b>MERVYN H. STERNE LIBRARY</b>						
Professor	0	0	0	0	0	0
Associate	0	0	0	0	0	0
Assistant	0	0	0	0	0	0
Instructor	0	0	0	0	0	0
Other	5	0	14	0	19	0
TOTAL	5	0	14	0	19	0
<b>UAB TOTAL</b>						
Professor	487	430	131	105	618	535
Associate	341	193	196	99	537	292
Assistant	394	1	336	7	730	8
Instructor	56	0	81	0	137	0
Other	7	0	16	0	23	0
	1,285	624	760	211	2,045	835

\*Figures include employees with full-time regular faculty appointments.

Source: UAB Office of Human Resource Management Information Systems, as of October 2008

## HIGHEST DEGREES OF UAB FULL-TIME FACULTY\* BY SCHOOL BY RANK FALL 2008

<u>School/Unit</u>	<u>Academic Doctorate</u>	<u>Professional Doctorate</u>	<u>Master's</u>	<u>Bachelor's/ Other</u>	<u>Total</u>
<b>ARTS AND HUMANITIES</b>					
Professor	23	0	7	0	30
Associate	26	6	8	0	40
Assistant	17	4	12	0	33
Instructor	1	0	14	0	15
Other	0	0	0	0	0
TOTAL	67	10	41	0	118
<b>BUSINESS</b>					
Professor	18	1	0	0	19
Associate	14	1	2	0	17
Assistant	8	2	2	0	12
Instructor	0	1	8	0	9
Other	0	0	1	0	1
TOTAL	40	5	13	0	58
<b>DENTISTRY</b>					
Professor	4	16	0	0	20
Associate	3	17	0	0	20
Assistant	2	17	0	0	19
Instructor	4	1	0	0	5
Other	0	0	0	1	1
TOTAL	13	51	0	1	65
<b>EDUCATION</b>					
Professor	7	3	0	0	10
Associate	18	8	0	0	26
Assistant	18	1	0	0	19
Instructor	0	0	3	0	3
Other	0	0	0	0	0
TOTAL	43	12	3	0	58
<b>ENGINEERING</b>					
Professor	22	2	0	0	24
Associate	19	0	1	0	20
Assistant	12	3	4	0	19
Instructor	0	0	3	0	3
Other	0	0	0	0	0
TOTAL	53	5	8	0	66

\*Figures include employees with full-time regular faculty appointments.

## HIGHEST DEGREES OF UAB FULL-TIME FACULTY\* (CONTINUED)

<b>School/Unit</b>	<b>Academic Doctorate</b>	<b>Professional Doctorate</b>	<b>Master's</b>	<b>Bachelor's/ Other</b>	<b>Total</b>
<b>HEALTH PROFESSIONS</b>					
Professor	16	9	0	0	25
Associate	17	3	8	0	28
Assistant	16	3	22	1	42
Instructor	2	1	4	1	8
Other	0	0	0	0	0
<b>TOTAL</b>	<b>51</b>	<b>16</b>	<b>34</b>	<b>2</b>	<b>103</b>
<b>JOINT HEALTH SCIENCES</b>					
Professor	69	32	0	0	101
Associate	34	13	1	0	48
Assistant	58	19	1	1	79
Instructor	7	2	0	0	9
Other	0	0	0	0	0
<b>TOTAL</b>	<b>168</b>	<b>66</b>	<b>2</b>	<b>1</b>	<b>237</b>
<b>MEDICINE</b>					
Professor	47	223	0	0	270
Associate	41	181	1	1	224
Assistant	75	289	10	2	376
Instructor	18	19	6	1	44
Other	0	0	0	1	1
<b>TOTAL</b>	<b>181</b>	<b>712</b>	<b>17</b>	<b>5</b>	<b>915</b>
<b>NATURAL SCIENCES AND MATHEMATICS</b>					
Professor	37	0	0	0	37
Associate	28	0	0	0	28
Assistant	17	1	0	1	19
Instructor	3	0	3	0	6
Other	0	0	0	0	0
<b>TOTAL</b>	<b>85</b>	<b>1</b>	<b>3</b>	<b>1</b>	<b>90</b>
<b>NURSING</b>					
Professor	10	5	0	0	15
Associate	5	4	0	0	9
Assistant	18	9	0	0	27
Instructor	0	0	27	0	27
Other	0	0	0	0	0
<b>TOTAL</b>	<b>33</b>	<b>18</b>	<b>27</b>	<b>0</b>	<b>78</b>
<b>OPTOMETRY</b>					
Professor	11	7	0	0	18
Associate	6	10	0	0	16
Assistant	6	6	0	0	12
Instructor	0	0	0	0	0
Other	0	0	0	0	0
<b>TOTAL</b>	<b>23</b>	<b>23</b>	<b>0</b>	<b>0</b>	<b>46</b>

\*Figures include employees with full-time regular faculty appointments.

## HIGHEST DEGREES OF UAB FULL-TIME FACULTY\* (CONTINUED)

<u>School/Unit</u>	<u>Academic Doctorate</u>	<u>Professional Doctorate</u>	<u>Master's</u>	<u>Bachelor's/ Other</u>	<u>Total</u>
<b>PUBLIC HEALTH</b>					
Professor	17	5	0	0	22
Associate	26	3	0	0	29
Assistant	24	4	0	0	28
Instructor	1	0	0	0	1
Other	0	0	0	1	1
TOTAL	68	12	0	1	81
<b>SOCIAL AND BEHAVIORAL SCIENCES</b>					
Professor	25	1	0	0	26
Associate	28	0	0	0	28
Assistant	26	5	4	2	37
Instructor	0	0	2	0	2
Other	0	0	0	0	0
TOTAL	79	6	6	2	93
<b>LISTER HILL LIBRARY OF THE HEALTH SCIENCES</b>					
Professor	0	0	1	0	1
Associate	0	0	4	0	4
Assistant	0	0	8	0	8
Instructor	0	0	5	0	5
Other	0	0	0	0	0
TOTAL	0	0	18	0	18
<b>MERVYN H. STERNE LIBRARY</b>					
Professor	0	0	0	0	0
Associate	0	0	0	0	0
Assistant	0	0	0	0	0
Instructor	0	0	0	0	0
Other	1	2	16	0	19
TOTAL	1	2	16	0	19
<b>UAB TOTAL</b>					
Professor	306	304	8	0	618
Associate	265	246	25	1	537
Assistant	297	363	63	7	730
Instructor	36	24	75	2	137
Other	1	2	17	3	23
TOTAL	905	939	188	13	2,045

\*Figures include employees with full-time regular faculty appointments.

Source: UAB Office of Human Resource Management Information Systems, as of October 2008

## ENDOWED POSITIONS AT UAB

Maurice S. Albin, M.D. Endowed Professorship in Anesthesiology (2005)  
Charles A. Alford, M.D. Endowed Chair in Pediatric Infectious Diseases (2001)  
Robert and Ruth Anderson Endowed Chair in Pathology (2006)  
Anderson Family Endowed Chair in Medical Education, Research and Patient Care (2007)  
Thomas E. Andreoli Professorship in Nephrology (2001)  
The Arthritis Foundation, Alabama Chapter Endowed Chair in Pediatric Rheumatology (2007)  
J. Max Austin Jr., M.D. Endowed Professorship in Gynecologic Oncology (2000)  
Baker-Dean Endowed Professorship in Interventional Cardiology (2000)  
Donna Brown Banton Endowed Professorship in Nursing (2005)  
George W. Barber Jr. Foundation Professorship in Otolaryngology/Head and Neck Surgery (1993)  
Lionel M. Barger Jr., M.D. Chair in Pediatric Cardiology (1996)  
Bergman/Pinkston Endowed Professorship in Physical Therapy (2007)  
John H. Blue Chair of General Surgery (2001)  
Rachel Z. Booth Endowed Chair in Nursing (1997)  
Mary J. Bradford Endowed Professorship in Gastroenterology (1998)  
Ben Vaughan Branscomb Chair of Medicine in Respiratory Disease (1990)  
Anton J. Bueschen, M.D. Endowed Chair in Urologic Surgery and Research (2006)  
Wallace R. Bunn Chair in Telecommunications (1992)  
C. E. Butterworth Jr., M.D. Professorship in the Department of Nutrition Sciences (1996)  
Benjamin Monroe Carraway, M.D. Chair in Anesthesiology (1997)  
Neil E. Christopher, M.D. Endowed Professorship in Family and Community Medicine (2001)  
Charles A. and Patsy W. Collat Endowed Chair in Neurosurgery (2006)  
converted from Professorship (2005) to Chair (2006)  
Ellen Gregg Shook Culverhouse Chair in Gynecologic Oncology (1998)  
Dental Alumni - Joseph F. Volker Chair of Clinical Dentistry (1982)  
Arnold G. Diethelm Endowed Chair in Transplantation Surgery (2004)  
William E. Dismukes Endowed Professorship in Infectious Diseases (2008)  
Edwin M. Dixon Endowed Chair in Neonatology (2000)  
Heman E. Drummond Endowed Chair of Psychiatry (1988)  
Eminent Scholar Chair in Pulmonary Diseases (1989)  
Endowed Chair in Developmental Psychology (2006)  
Endowed Professorship in Polar or Marine Biology (2001)  
Endowed Professorship in Transplant Nephrology (2001)  
Edward A. Ernst, M.D. Endowed Professorship in Anesthesiology (2001)  
James H. Estes Family Endowed Chair for Lung Cancer Research (2009)  
EyeSight Foundation of Alabama Endowed Chair of Ophthalmology (1999)  
Featheringill Endowed Professorship for Cardiac Arrhythmia Research (2006)

## ENDOWED POSITIONS AT UAB (CONTINUED)

Wayne H. and Sara Crews Finley Chair of Medical Genetics (1986)

Charles E. Flowers Jr. Endowed Chair of Obstetrics and Gynecology (2002)  
converted from Professorship (1985) to Chair (2002)

James Garber Galbraith Chair in Neurosurgery (1992)

Simon Gelman, M.D., Ph.D. Endowed Professorship in Anesthesiology (2001)

Geropsychiatry Research Chair (1993)

J. W. and Virginia Goodwin - Warren D. Blackburn Jr. Research Chair in Rheumatology (1993)

William "Student" Sealy Gosset Endowed Professorship in Biostatistics (2008)

Jeanne and Ann Griffin Chair for Women's Cancer Research (1997)

Nancy R. and Eugene C. Gwaltney Family Endowed Chair in Medical Research (2003)

Nancy R. and Eugene C. Gwaltney Family Endowed Chair in Juvenile Diabetes Research (2007)

Alfred Habeeb Chair in Anesthesiology (1992)

Ruth Lawson Hanson Chair of Medicine in Diabetes and Metabolism (1967)

Joy and Bill Harbert Endowed Chair in Cancer Genetics (2001)

Marguerite Jones Harbert – Gene V. Ball, M.D. Endowed Chair in Rheumatology (2006)

Bruce Harris Jr., M.D. Endowed Professorship in Obstetrics and Gynecology (1999)

Elmer and Glenda Harris Endowed Chair in Cardiovascular Disease (2004)

Dr. Tinsley R. Harrison Endowed Professorship in Medical Resident Education (2002)

Griffith R. Harsh Endowed Chair in Neurosurgery (2009)  
converted from Professorship (2006) to Chair (2009)

Wyatt and Susan Haskell Endowed Professorship for Medical Excellence (2007)

James Johnston Hicks Chair of Otolaryngology/Head and Neck Surgery (1989)

Julius N. Hicks Endowed Chair in Otolaryngology/Head and Neck Surgery (2005)

S. Richardson Hill Jr. Professorship in Endocrinology (1988)

Basil I. Hirschowitz Endowed Chair in Gastroenterology (1996)  
converted from Professorship (1988) to Chair (1996)

Charles and Alice Hohenberg Professorship in Pulmonary and Critical Care Medicine (1996)

Howard L. Holley Research Chair in Rheumatology (1987)

Marie S. Ingalls Endowed Chair in Nephrology Leadership (2006)  
converted from Professorship (2001) to Chair (2006)

Charles Byron Ireland Chair of Psychiatric Research (1973)

Katharine Reynolds Ireland Chair of Pediatrics (1992)

Kathy Ireland Chair in Psychiatric Research (1992)

John S. Jemison Jr. Visiting Professorship in the Humanities (1986)

L. R. Jordan Chair in Health Services Administration (1988)

Fay Fletcher Kerner Chair of Surgery (1973)  
converted from Professorship (1964) to Chair (1973)

Eleanor E. Kidd Endowed Chair in Primary Care Medicine (2007)  
converted from Professorship (2003) to Chair (2007)



## **ENDOWED POSITIONS AT UAB (CONTINUED)**

Robert Y. Kim Outstanding Educator Endowed Chair in Radiation Oncology (2007)  
F. Cleveland Kinney Endowed Chair in Geriatric Psychiatry (2007)  
John W. Kirklin Chair of Cardiovascular Surgery (1980)  
Robert B. Kyle Professorship and Chair in Rehabilitation Medicine (1974)  
James C. and Elizabeth T. Lee Chair in Biochemistry (1993)  
William A. Lell, M.D. – Paul N. Samuelson, M.D. Endowed Professorship in Anesthesiology (2003)  
Patrick H. Linton Professorship of Psychiatry (1987)  
Albert F. LoBuglio Endowed Chair for Translational Cancer Research (2006)  
Loeb Eminent Scholar Chair in Pediatrics (1992)  
Jane Knight Lowe Chair of Medicine in Rheumatology (2001)  
converted from Professorship (1986) to Chair (2001)  
Dr. Champ Lyons Endowed Chair in General Surgery (1997)  
Caldwell Marks Endowed Chair in Cancer Oncology (2005)  
Jeanne V. Marks Endowed Chair in Cardiovascular Research (1999)  
Alma B. Maxwell – UAHSF Endowed Chair in Biomedical Research (2008)  
Martha Ann and David L. May Endowed Chair in Cancer Research (1999)  
Charles A. McCallum Chair of Oral and Maxillofacial Surgery (1985)  
Charles H. McCauley Chair of Microbiology (1978)  
Holt A. McDowell, Jr., M.D. Endowed Chair of Vascular Surgery (2007)  
Evelyn F. McKnight Endowed Chair for Learning and Memory in Aging (2006)  
converted from Professorship (2004) to Chair (2006)  
Alice McNeal, M.D. Endowed Chair in Anesthesiology (1998)  
Gwen McWhorter Endowed Chair in Geriatric Medicine (2002)  
Ruby F. Meredith Outstanding Clinician Radiation Oncology Endowed Chair (2007)  
converted from Professorship (2004) to Chair (2007)  
Nathan E. Miles Endowed Chair of Ophthalmology (1996)  
Robert W. Mowry, M.D., Endowed Professorship in Pathology (2008)  
John S. Odess Chair in Otolaryngology/Head and Neck Surgery (1993)  
Marie L. O'Koren Endowed Chair in Nursing (1992)  
A. D. Pacifico, M.D. Endowed Chair of Cardiovascular Surgery (2002)  
Emmett G. and Beverly S. Parrish Endowed Professorship (2001)  
Department of Radiology Visiting Professor Endowment Fund (1989)  
Leonard H. Robinson Endowed Chair in Pathology (1998)  
James R. Rosen Chair in Dental Research (1990)  
Merle M. Salter Chair of Radiation Oncology (1995)  
John D. Sherrill Chair of Orthopaedic Surgery (1970)  
Elesabeth Ridgely Shook Endowed Chair in Psychiatry (2001)  
J. Marion Sims Endowed Chair in Obstetrics and Gynecology (1985)

## ENDOWED POSITIONS AT UAB (CONTINUED)

Margaret Cameron Spain Chair in Obstetrics and Gynecology (1998)  
Spencer Chair in Medical Science Leadership (1992)  
Evalina B. Spencer Chair in Oncology (1994)  
John T. and Juanelle D. Strain Endowed Chair in Neurology (2006)  
Jim Straley Endowed Chair in AIDS Research (2007)  
Tate Jordan Thomas Professorship in Psychiatric Medicine (1994)  
Transplant Nephrology Clinical Research Professorship (2001)  
UAB Alumni and Friends Professorship in Accounting (1990)  
UAB Cardiovascular Surgical Research Chair (2004)  
converted from Professorship (1980) to Chair (2004)  
UAHSF Endowed Chair in Biomedical Research (2008)  
converted from Professorship (2005) to Chair (2008)  
Wachovia Endowed Chair in Business Administration (2006)  
converted from Professorship (2004) to Chair (2006)  
Anna Lois Waters Chair of Medicine in Rheumatology (1970)  
Mary Gertrude Waters Chair of Cardiovascular Medicine (1972)  
Newman H. Waters Chair of Clinical Pharmacology (1992)  
Webb Chair in Nutrition Sciences (2001)  
Ben S. Weil Chair of Industrial Distribution (1986)  
John N. Whitaker Endowed Chair in Neurology (2005)  
converted from Professorship (2003) to Chair (2005)  
Witten-Stanley Endowed Chair in Radiology (1997)  
Women's Committee of the Spain Rehabilitation Center Endowed Chair in Rehabilitation  
Neuroscience Research (2006)  
J. Benjamin Younger, M.D. Endowed Professorship in Reproductive Endocrinology and Infertility  
(2000)

## TOTAL FULLY FUNDED ENDOWED POSITIONS

Chairs	92
Professorships	31
Combined Professorship/Chair	1
Total	124

NOTE: Date in parentheses is the year established. Lists of past and present holders of each endowed position can be found at the bottom of the sidebar on the website of the UAB Development Office (<http://main.uab.edu/show.asp?durki=1892>).

Source: Minutes, the Board of Trustees of the University of Alabama; campus records

## **UAB FACULTY AWARDS AND HONORS**

### **SPECIAL PROFESSORSHIPS AND APPOINTMENTS**

#### **Distinguished Professors**

Samuel B. Barker, Ph.D. (1976-2002)  
J. Claude Bennett, M.D. (1996-emeritus, 1996)  
Ben Vaughan Branscomb, M.D. (1989-emeritus, 1989)  
William C. Carter, Ph.D. (2004-emeritus, 2009)  
William C. Cockerham, Ph.D. (2005-present)  
Harriet P. Dustan, M.D. (1985-emerita, 1988)  
Charles E. Flowers Jr., M.D. (1985-emeritus, 1985)  
Walter B. Frommeyer, M.D. (1968-1979)  
Tinsley R. Harrison, M.D. (1964-1978)  
S. Richardson Hill Jr., M.D. (1987-emeritus, 1994-2003)  
Thomas N. James, M.D. (1981-1987-emeritus, 2005)  
William J. Koopman, M.D. (2005-emeritus, 2005)  
Albert F. LoBuglio, M.D. (2005-present)  
Champ Lyons, M.D. (1964-1965)  
Charles A. McCallum, D.M.D., M.D. (1993-emeritus, 1998)  
Raymond A. Mohl, Ph.D. (2005-present)  
Jimmy D. Neill, Ph.D. (1994-emeritus, 2004)  
Shin J. Oh, M.D. (2007-present)  
James A. Pittman Jr., M.D. (1992-emeritus, 1992)  
Joseph F. Volker, D.D.S., Ph.D. (1982-1989)  
Richard J. Whitley, M.D. (2009-present)

#### **Distinguished Service Professors**

Joseph H. Appleton, Ph.D.; Civil Engineering (1984-emeritus, 1990)  
Milly Cowles, Ph.D.; Education (1987-emerita, 1989)  
Jay Goldman, D.Sc.; Engineering (2001-present)  
Fain A. Guthrie, Ed.D.; Education (1980-emeritus, 1988)  
Maryann M. Manning, Ed.D.; Education (2007-emerita, 2007)  
George E. Passey, Ph.D.; Psychology (1985-emeritus, 1985)  
J. Dudley Pewitt, D.B.A.; Business (1990-1994)

#### **University Professors**

Karlene K. Ball, Ph.D.; Developmental Psychology (2009-present)  
Frederick W. Conner, Ph.D.; Humanities (1976-emeritus, 1978)  
Jack E. Lemons, Ph.D.; Prosthodontics (2009-present)  
James B. McClintock, Ph.D.; Polar and Marine Biology (2003-present)  
Dalton E. McFarland, Ph.D.; Management (1972-emeritus, 1983)  
Henry Panion, Ph.D.; Music (2000-present)  
James Rachels, Ph.D.; Philosophy (1983-2003)  
Craig T. Ramey, Ph.D.; Psychology (1997-2002)  
Edward Taub, Ph.D.; Psychology (2000-present)

#### **University Scholars**

William F. Bridgers, M.D.; Public Health (1991-1992)  
W. Jack Duncan, Ph.D.; Management (1987-2008)  
Virginia V. Hamilton, Ph.D.; History (1981-emerita, 1987)  
David E. Harrell, Ph.D.; History (1976-1981; 1985-1990)  
Jimmy W. Mays, Ph.D.; Chemistry (2001)  
David L. Sparks, Ph.D.; Psychology (1976-1981)  
James F. Tent, Ph.D.; History (1990-present)  
Yogesh K. Vohra, Ph.D.; Physics (2001-present)

Dates shown represent date of appointment and/or departure from UAB.

## UAB FACULTY AWARDS AND HONORS (CONTINUED)

### NATIONAL RECOGNITIONS

#### Fulbright Scholars

1965-67 Abdullah A. Khatri - Psychology  
1977-78 Blaine A. Brownell - American and Urban Studies  
Henry N. McCarl - Economics  
1981-82 Ruth B. LaMonte - Education  
J. Walter Mason - Environmental Health  
1982-83 Daniel R. Lesnick - History  
Eul Soo Pang - History  
1983-84 Thomas L. St. Pierre - Chemistry  
1985-86 Kathleen S. Logan - Anthropology  
James F. Mersmann - English  
Bruce P. Wheatley - Anthropology  
1986-87 W. Jack Duncan - Management  
John D. Jones - Student Affairs  
Charles W. Nance - Anthropology  
Larry G. Wharton - English  
1987-88 Ralph A. Johnson - Center for Labor Education and Research  
Mohammed A. Khaled - Nutrition Sciences  
1989-90 Thomas L. Powers - Marketing  
Frederick P. Smith - Criminal Justice  
1990-91 Richard M. Gargiulo - Special Education  
1991-92 Jane M. Christian - Anthropology  
Stephen O. Glosecki - English  
1992-93 Bruce Freeman - Anesthesiology  
1993-94 Beverly Hawk - Political Science  
Virginia D. Gauld - Student Affairs  
1994-95 Roger T. Lewis - Mathematics  
1995-96 Voytek Zubek - Political Science  
1995-97 Mary Umlauf - Nursing  
1996-97 Tee Hiatt - Health Services Administration  
1997-98 Robert A. McLean - Health Administration  
1999-00 Paul Pedersen - Education  
2002-03 Jack E. Davis - History  
2003-04 Lynda Harrison - Nursing  
2004-05 John Van Sant - History  
Mohammad A. Khaled - Nutrition Sciences  
2006-07 Douglas C. Heimbürger - Nutrition Sciences  
2007-08 Akhlaque Haque - Public Administration

Source: Minutes, the Board of Trustees of the University of Alabama; campus records

## UAB FACULTY AWARDS AND HONORS (CONTINUED)

### DISTINGUISHED FACULTY LECTURERS

1964	Dr. Tinsley R. Harrison, Professor of Medicine
1965	Dr. Champ Lyons, Professor and Chairman, Department of Medicine
1966	Dr. Joseph F. Volker, Vice President for Health Affairs
1967	Dr. Thomas E. Hunt, Professor of Anatomy
1968	Dr. Samuel B. Barker, Director of Graduate Studies
1969	Dr. Howard L. Holley, Professor of Medicine
1970	Dr. Sidney B. Finn, Professor of Dentistry
1971	Dr. Walter B. Frommeyer, Distinguished Professor, University of Alabama
1972	Dr. Charles A. McCallum, Dean, School of Dentistry
1973	Dr. J. Garber Galbraith, Professor of Surgery
1974	Dr. Elizabeth C. Crosby, Professor Emerita of Anatomy
1975	Dr. John W. Kirklin, Fay Fletcher Kerner Professor and Chairman, Department of Surgery
1976	Dr. S. Richardson Hill Jr., Vice President for Health Affairs
1977	Dr. Thomas N. James, Mary Gertrude Waters Professor of Cardiology and Chairman, Department of Medicine
1978	Dr. Marie L. O'Koren, Dean, School of Nursing
1979	Dr. J. Claude Bennett, Professor and Chairman, Department of Microbiology
1980	Dr. John R. Durant, Director, Comprehensive Cancer Center
1981	Dr. James A. Pittman Jr., Dean, School of Medicine
1982	Dr. Max D. Cooper, Professor of Pediatrics
1983	Drs. Wayne and Sara Finley, Director and Co-Director, Laboratory of Medical Genetics
1984	Dr. Harriet P. Dustan, Director, Cardiovascular Research and Training Center
1985	Dr. Leonard H. Robinson, Dean, School of Dentistry
1986	Dr. C. E. Butterworth, Professor and Chairman, Department of Nutrition Sciences
1987	Dr. Dan W. Urry, Director, Laboratory of Molecular Biophysics
1988	Dr. Basil I. Hirschowitz, Professor of Medicine
1989	Dr. Harold M. Fullmer, Professor Emeritus of Pathology
1990	Dr. Juan M. Navia, Dean, School of Public Health
1991	Dr. Lionel M. Barger Jr., Professor Emeritus of Pediatric Cardiology
1992	Dr. Jiri F. Mestecky, Professor of Microbiology
1993	Dr. Charles E. Bugg, Director, Center for Macromolecular Crystallography
1994	Dr. Arnold G. Diethelm, Fay Fletcher Kerner Professor and Chair, Department of Surgery
1995	Dr. Albert F. LoBuglio, Director, UAB Cancer Center
1996	Dr. Gail H. Cassell, Professor and Chair, Department of Microbiology
1997	Dr. Suzanne Oparil, Professor of Medicine
1998	Dr. Richard J. Whitley, Professor of Pediatrics, Microbiology, and Medicine
1999	Dr. Albert D. Pacifico, John W. Kirklin Professor of Cardiovascular Surgery
2000	Dr. Larry J. DeLucas, Director, UAB Center for Biophysical Sciences and Engineering
2001	Dr. Robert L. Goldenberg, Charles E. Flowers Professor of Obstetrics and Gynecology
2002	Dr. Eric Hunter, Director, Center for AIDS Research
2003	Dr. J. Russell Lindsey, Professor Emeritus of Genomics and Pathobiology
2004	Dr. William J. Koopman, Professor and Chairman, Department of Medicine
2005	Dr. Jay M. McDonald, Professor and Chairman, Department of Pathology
2006	Dr. Jack Lemons, Professor, Department of Prosthodontics
2007	Dr. Dale J. Benos, Professor, Department of Physiology and Biophysics
2008	Dr. Robert P. Kimberly, Professor, Department of Medicine
2009	Dr. Suzanne Michalek, Professor, Department of Microbiology

Academic or administrative appointment shown for each lecturer is the primary appointment held at the time of selection as Distinguished Faculty Lecturer.

Source: UAB Public Relations and Marketing

## UAB FACULTY AWARDS AND HONORS (CONTINUED)

### ELLEN GREGG INGALLS / NATIONAL ALUMNI SOCIETY AWARD FOR EXCELLENCE IN CLASSROOM TEACHING AT UAB

1969-70	Dr. Hubert H. Harper, Associate Professor of English and Classical Languages
1970-71	Ms. Charlotte Gafford, Instructor in English
1971-72	Dr. Hubert H. Harper, Associate Professor of English and Classical Languages
1972-73	Mr. James Dupuy, Instructor in Mathematics
1973-74	Dr. Robert L. Penny, Assistant Professor of English
1974-75	Dr. Glenda Elliott, Assistant Professor of Education
1975-76	Dr. John S. Coley, Professor of English
1976-77	Dr. Roberta A. Long, Associate Professor of Education
1977-78	Dr. Maryann M. Manning, Associate Professor of Education
1978-79	Dr. Gary L. Manning, Associate Professor of Education
1979-80	Dr. Carl E. McFarland Jr., Assistant Professor of Psychology
1980-81	Mr. James H. Hawk, Lecturer in Physics
1981-82	Dr. Loudell Ellis-Robinson, Professor of Accounting
1982-83	Ms. Lillian Naumann, Instructor in Biology
1983-84	Dr. David A. Conner, Professor and Chair of Electrical Engineering
1984-85	Dr. Lee R. Summerlin II, Professor of Chemistry
1985-86	Dr. James F. Mersmann, Associate Professor of English
1986-87	Mr. Ollie S. Powers III, Assistant Professor of Accounting
1987-88	Dr. Ada W. Long, Associate Professor of English
1988-89	Dr. J. Barry Andrews, Professor of Materials Science and Engineering
1989-90	Dr. Michael R. Bowers, Assistant Professor of Marketing
1990-91	Dr. Stephen O. Glosecki, Associate Professor of English
1991-92	Dr. Thomas P. Edmonds, Professor of Accounting
1992-93	Dr. Fouad H. Fouad, Associate Professor of Civil Engineering
1993-94	Dr. Gregory E. Pence, Professor of Philosophy
1994-95	Ms. Virginia S. Volker, Instructor in Biology
1995-96	Ms. Judy Taylor, Assistant Professor in Nursing
1996-97	Dr. Colin J. Davis, Associate Professor of History
1997-98	Dr. Carl E. McFarland Jr., Professor and Chair of Psychology
1998-99	Dr. Anne M. Cusic, Instructor in Biology
1999-00	Dr. Jerry T. Aldridge, Professor of Education
2000-01	Dr. Joe K. Gerald, Assistant Professor in Surgical Physician Assistant Program
2001-02	Dr. Maryann M. Manning, Professor of Education
2002-03	Dr. J. Barry Andrews, Professor and Chair of Materials Science and Engineering
2003-04	Mr. Ollie S. Powers III, Associate Professor of Accounting
2004-05	Dr. Ellen Buckner, Associate Professor of Nursing
2005-06	Dr. Sandra Jean O'Neal, Professor and Chair of Prosthodontics
2006-07	Dr. Rosalia N. Scripa, Professor of Engineering
2007-08	Dr. Ferris J. Ritchey, Professor of Sociology
2008-09	Dr. Peter V. Anderson, Professor of Pathology

Date shown is the academic year covered by the award. Academic appointment shown for each award winner is the primary appointment held at the time of the award.

Source: UAB Public Relations and Marketing

## UAB FACULTY AWARDS AND HONORS (CONTINUED)

### CAROLYN P. AND CHARLES W. IRELAND PRIZE FOR SCHOLARLY DISTINCTION

1991	Dr. Joan Lorden, Psychology
1992	Dr. James Rachels, Philosophy
1993	Dr. James McClintock, Biology
1994	Dr. James Tent, History
1995	Dr. Roger Lewis, Mathematics
1996	Dr. Henry Panion, Music
1997	Dr. Edward Taub, Psychology
1998	Dr. Harold Kincaid, Philosophy
1999	Dr. Dennis R. Covington, English
2000	Dr. Craig T. Ramey, Civitan International Research Center
2001	Dr. Jimmy W. Mays, Chemistry
2002	Dr. William C. Carter, Foreign Languages and Literature
2003	Dr. Yogesh K. Vohra, Physics
2004	Dr. William C. Cockerham, Sociology
2005	Dr. Raymond A. Mohl, History
2006	Dr. Wayne J. Brouillette, Chemistry
2007	Dr. Stephen A. Watts, Biology
2008	Dr. Karlene K. Ball, Psychology
2009	Dr. Sergey B. Mirov, Physics

Source: Office of the Associate Provost for Faculty Development and Faculty Affairs

### ODESSA WOOLFOLK COMMUNITY SERVICE AWARD

1998	Dr. Linda W. Goodson
1999	Dr. Susan K. Key
2000	Dr. Ada W. Long
2001	Dr. Michael S. Saag
2002	Dr. Stephen L. Hajduk
2003	Dr. Mark E. LaGory
2004	Dr. Mona Fouad
2005	Dr. Ken R. Marion
2006	Dr. Edward E. Partridge
2007	Dr. Isabel Scarinci
2008	Dr. John Thornton
2009	Dr. Brian Geiger

Source: Office of the Associate Provost for Faculty Development and Faculty Affairs

# **FINANCIAL AND PHYSICAL RESOURCES**



**SELECTED UAB FINANCIAL HIGHLIGHTS**  
**FY 2004-05 through FY 2007-08**

<b>Item</b>	<b>2004-05<sup>3</sup></b>	<b>2005-06<sup>3</sup></b>	<b>2006-07<sup>3</sup></b>	<b>2007-08<sup>3</sup></b>
Tuition and Fees (gross)	95,295,781	96,756,357	97,410,523	107,111,601
State Appropriations <sup>1</sup>	225,966,057	260,174,828	310,834,004	358,088,951
Gifts, Grants & Contracts <sup>2</sup>	431,476,599	475,770,491	468,030,485	535,247,542
Hospital Sales & Services	846,379,510	924,738,387	1,010,457,233	1,012,709,990
Total Revenues (gross)	1,822,352,024	1,967,654,414	2,182,415,995	2,476,085,676
Total Assets	2,606,155,268	2,912,158,065	3,066,311,314	3,144,157,845
Instructional Expenditures	218,266,616	226,529,559	237,877,988	244,233,024
Hospital Expenditures	802,952,892 <sup>4</sup>	864,843,947 <sup>4</sup>	952,658,396 <sup>4</sup>	961,037,061 <sup>4</sup>
Auxiliary Expenditures	25,235,088	29,300,799	33,747,516	31,337,276

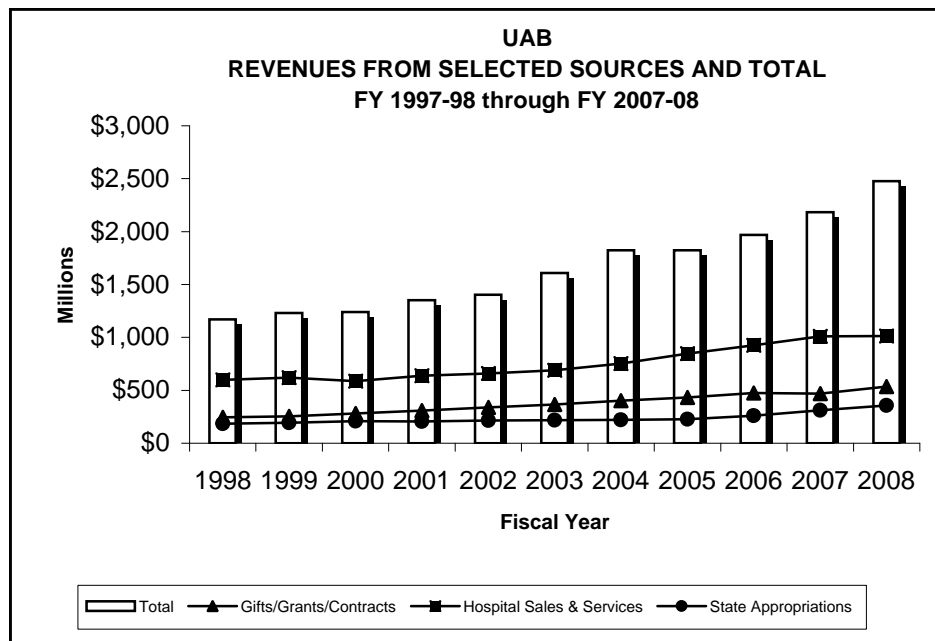
NOTE: Financial data are based on the published financial statement for that year and do not necessarily reflect subsequent changes in accounting practices.

<sup>1</sup>Includes state appropriations for educational and general (E&G), hospital, and auxiliary enterprises.

<sup>2</sup>Includes indirect cost recovery. Excludes endowment gifts.

<sup>3</sup>2004-05 through 2006-07 data exclude other nonmajor fund balances and activity. Beginning in 2007-08, the balances and activities of UAB's blended component units are included.

<sup>4</sup>Includes bad debt expense as follows: 2004-05 - \$116,733,083; 2005-06 - \$148,690,483; 2006-07 - \$181,652,584; 2007-08 - \$148,690,483.



Source: Published UAB Financial Statements and the Office of the Associate Vice President for Financial Affairs

# UAB FINANCIAL PROFILE FY 2007-08 ACTUAL

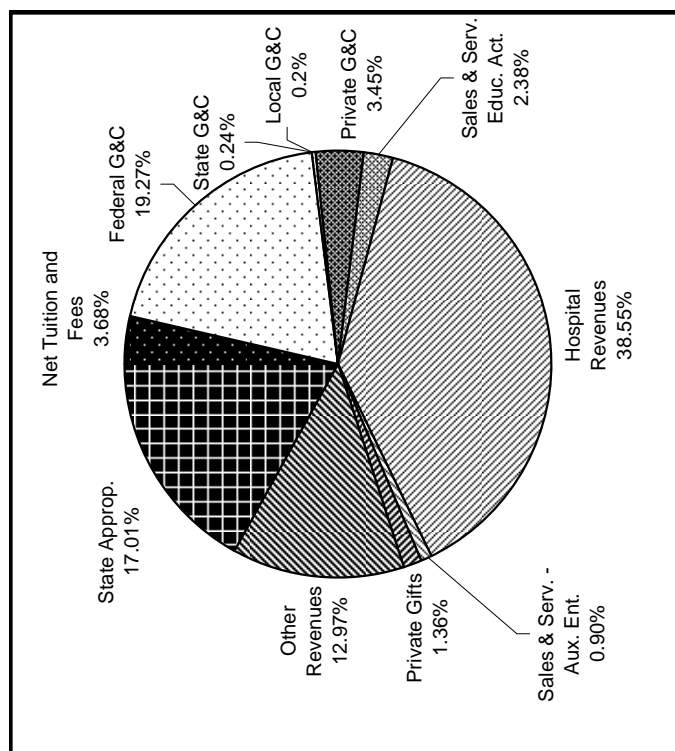
	2008
<b>Operating Revenues</b>	
Gross Tuition and Fees	\$ 107,111,601
Less: scholarship allowance	(29,135,838)
Less: bad debt expense	(401,832)
Net Tuition and Fees	77,573,931
Grants and contracts	
Federal	395,230,152
State	4,838,521
Local	4,232,724
Private	72,179,846
Sales and services:	
Educational activities	50,025,572
Hospital, net of bad debt expense of \$148,690,483	864,019,507
Auxiliary enterprises, net of scholarship allowance of \$531,646	19,018,981
Revenue from discontinued operations	10,767,580
Other operating revenues	342,566,561
<b>Total operating revenues</b>	<b>\$ 1,840,453,375</b>
<b>Operating Expenses</b>	
Salaries, wages and benefits	\$ 1,150,426,905
Supplies and services	892,634,667
Depreciation and amortization	111,343,621
Scholarships and fellowships	20,498,768
Expenses from discontinued operations	11,380,047
<b>Total operating expenses</b>	<b>\$ 2,186,284,008</b>
<b>Operating loss</b>	<b>\$ (345,830,633)</b>
<b>Nonoperating Revenues (Expenses)</b>	
Gains and losses	
State appropriations	\$ 358,088,951
Federal grants and contracts	10,572,826
State grants and contracts	124,584
Private grants and contracts	432,730
Gifts	28,536,648
Investment loss	(136,413,807)
Interest expense	(27,375,953)
Loss on asset disposition	(2,186,152)
Gain on sale of discontinued operations	26,066,601
Net other nonoperating revenue	2,850,129
<b>Net nonoperating revenues</b>	<b>\$ 260,696,557</b>
<b>Loss before other revenues, expenses, gains, and losses</b>	<b>\$ (85,134,076)</b>
<b>Other Changes in Net Assets</b>	
Capital and endowment activities	
State funds-capital	\$ 5,096,600
Capital grants and contracts	9,457,633
Capital gifts	9,641,878
Endowment gifts	5,235,022
Other revenue	768,900
<b>Net other changes in net assets</b>	<b>\$ 30,200,033</b>
<b>Decrease in net assets</b>	<b>\$ (54,934,043)</b>

Note: Includes the balances and activities of UAB's blended component units. Please reference the notes to the financial statements for other important information.

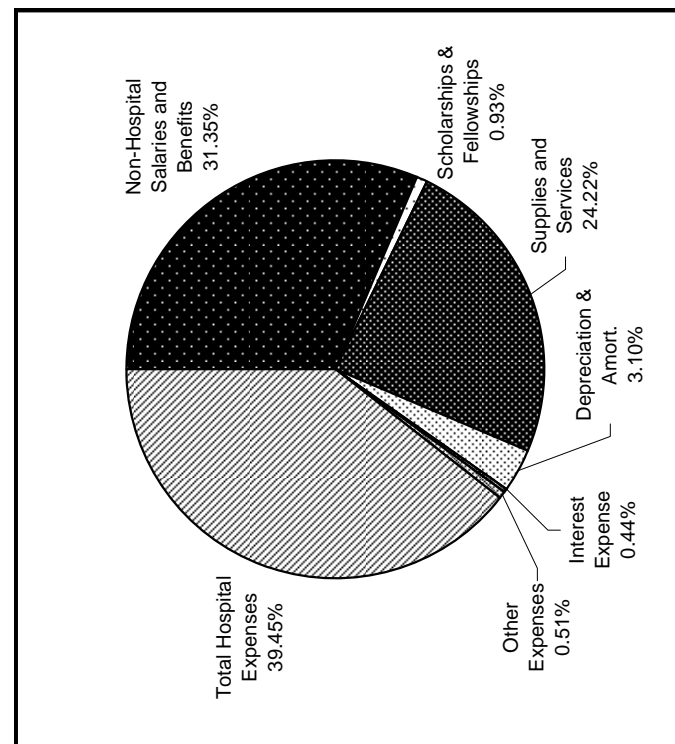
Source: UAB Financial Affairs

# UAB FINANCIAL PROFILE FY 2007-08 ACTUAL

## Revenues



## Expenses



### NOTES:

Hospital revenues include sales and services revenue, other operating revenues, and investment income.

Other revenues include non-hospital other operating and nonoperating revenues, investment income (loss), and revenue from discontinued operations.

Hospital expenses include salaries and benefits, supplies and services, depreciation and amortization, interest expense, and hospital other nonoperating expenses.

Revenues and expenses include the activities of UAB's blended component units.

Capital and Endowment activities are not included in the above analysis.

Source: UAB Financial Affairs

**STATE FUNDING  
FROM THE EDUCATIONAL TRUST FUND  
AS ENACTED FY 1967-68 TO FY 2008-09**

<b>Fiscal Year</b>	<b>UAB Request</b>	<b>ACHE Recommendation</b>	<b>Governor's Recommendation</b>	<b>Original Appropriation</b> <sup>1</sup>
2008-09	\$407,056,000	\$365,055,735	\$314,478,004	\$320,111,373
2007-08	370,836,760	359,524,170	351,310,338	353,961,485
2006-07	298,725,538	287,673,961	306,972,657	310,661,485
2005-06	259,860,966	254,242,544	254,242,543	260,174,828
2004-05	245,917,325	238,250,286	222,868,737	225,966,057 <sup>12,13</sup>
2003-04	250,965,529	227,114,415	219,688,766	219,773,186 <sup>12</sup>
2002-03	245,322,089	227,260,481	219,019,853	218,230,895 <sup>12</sup>
2001-02 <sup>11</sup>	256,627,315	231,907,993	205,919,985	213,335,122 <sup>12</sup>
2000-01 <sup>11</sup>	228,226,882	224,484,654	219,532,486	219,912,486 <sup>12</sup>
1999-2000 <sup>11</sup>	220,240,493	212,400,799	203,248,005	207,478,983
1998-99 <sup>11</sup>	217,954,281	198,359,499	191,112,548	192,564,684
1997-98	197,376,459	195,086,299	182,987,673	183,984,625
1996-97 <sup>10</sup>	216,099,194	191,571,618	159,292,757	182,755,980
1995-96 <sup>8</sup>	196,784,010	179,743,681	145,338,599	182,655,980 <sup>7,9</sup>
1994-95	174,086,656	170,217,281	163,068,408	165,184,208 <sup>7</sup>
1993-94	174,374,421	156,690,187	<sup>2</sup>	146,291,307 <sup>7</sup>
1992-93 <sup>6</sup>	173,166,984	144,241,231	<sup>2</sup>	136,230,017
1991-92 <sup>5</sup>	157,091,034	137,635,377	<sup>2</sup>	140,081,381
1990-91	148,171,566	136,489,897	<sup>2</sup>	128,399,290
1989-90	136,927,929	126,808,097	<sup>2</sup>	115,759,036
1988-89 <sup>4</sup>	127,513,440	113,630,997	<sup>2</sup>	117,179,843
1987-88	122,426,275	102,672,967	97,632,142	98,635,173
1986-87	139,973,045	114,677,669	96,662,640	97,162,640
1985-86	119,191,528	106,927,000	105,138,359	107,388,359
1984-85	101,242,132	93,758,000	86,625,930	87,275,930
1983-84	99,579,000	93,071,000	70,272,751	70,701,053
1982-83	108,721,564	87,329,341	69,952,098	69,676,355
1981-82	104,673,576	83,704,000	62,172,442	63,975,600
1980-81	97,723,505	84,563,800	67,950,000	68,350,000
1979-80	98,497,422	75,784,800	59,970,512	60,170,512
1978-79	79,541,318	62,707,368	61,159,512	59,970,512

## STATE FUNDING (CONTINUED)

<b>Fiscal Year</b>	<b>UAB Request</b>	<b>ACHE Recommendation</b>	<b>Governor's Recommendation</b>	<b>Original Appropriation</b>
1977-78	60,757,369	52,747,352	50,946,789	47,707,789
1976-77	59,314,197	41,144,509	34,093,400	37,057,200
1975-76	36,357,498	30,636,318	34,093,400	38,443,400
1974-75	28,249,988	25,702,448	23,839,507	25,101,220
1973-74	25,336,139	23,399,914	21,742,525	20,403,000
1972-73	27,432,974	<sup>3</sup>	13,035,704	14,673,988
1971-72	22,330,398	-	13,035,704	12,583,000
1970-71	26,371,000	-	10,327,647	8,958,000
1969-70	19,565,000	-	9,567,217	8,095,000
1968-69	9,863,016	-	5,514,236	7,192,342
1967-68	8,940,424	-	5,514,236	5,720,000

<sup>1</sup> Appropriations are shown as originally enacted. Budgets have been prorated as follows: 1978-79 - 2.9811%; 1979-80 - 6.1406%; 1980-81 - 3.568%; 1985-86 - 4.1233%; 1990-91 - 6.5%; 1991-92 - 3%, 2000-01 - 6.2%, 2008-09 - 9.0%. In FY 1992-93, UAB received supplemental appropriations totalling \$4,351,070. In FY 2001-02, the appropriation was adjusted to \$212,869,757.

<sup>2</sup> The Governor's Recommendation contained one amount for the University of Alabama System.

<sup>3</sup> The Alabama Commission on Higher Education made its first recommendation in the 1973-75 biennium.

<sup>4</sup> Beginning in FY 1988-89, figures include funding for Special Mental Health. Prior to FY 1988-89, funding for Special Mental Health was allocated separately. Since ACHE does not make a recommendation for Special Mental Health funding, the prior year's appropriation is substituted as the recommendation.

<sup>5</sup> Original Appropriation amount includes FICA. FICA was not included in UAB's request or ACHE's recommendation.

<sup>6</sup> FICA is included in all figures from FY 1992-93 forward.

<sup>7</sup> In FY 1993-94, UAB also received \$100,000 for minority business recruitment and \$300,000 for the Beville Center for Biotechnology. In FY 1994-95 and FY 1995-96, UAB received \$350,000 for the Beville Center.

<sup>8</sup> From FY 1995-96 to FY 1998-99, data include UAB Walker College where appropriate.

<sup>9</sup> Original appropriation includes teachers retirement of \$29,763,321 which was directly appropriated to UAB.

<sup>10</sup> Beginning in FY 1996-97, figures include funding for teachers retirement. Since ACHE did not make a recommendation for teachers' retirement funding in FY 1996-97, the prior year's appropriation is substituted as the recommendation.

<sup>11</sup> In FY 1998-99 and FY 1999-00, UAB also received \$348,735 to fund a teacher in-service center in the School of Education. In FY 2000, the amount was increased to \$351,606. Beginning in FY 2002, teacher in-service centers were funded through the State Department of Education.

<sup>12</sup> UAB also received funding for line items for the Cystic Fibrosis Center (\$200,000) and the Holmes Brain Tumor Research Center (\$200,000) in FY 2000-01. In FY 2001-02 and FY 2002-03, funding for both lines were reduced to \$178,220, and UAB received \$84,420 for the emergency medicine residency program. In FY 2003-04, the lines were cut to \$44,555 and emergency medicine received \$21,105. In FY 2004-05, all funding for these special lines (Cystic Fibrosis Center, Holmes Brain Tumor Research Center, and the Emergency Medicine Residency Program) was cut.

<sup>13</sup> UAB also received funding distributed through ACHE for Knight v AL Minority Faculty Recruitment and Retention in the amount of \$539,525.

Source: Alabama Commission on Higher Education Unified Budget Recommendations

**UAB SPONSORED PROJECT EXPENDITURES**  
**FY 2001 through FY 2008**

	<u>FY 2001</u>	<u>FY 2002</u>	<u>FY 2003</u>	<u>FY 2004</u>	<u>FY 2005</u>	<u>FY 2006</u>	<u>FY 2007</u>	<u>FY 2008</u>
Arts & Humanities	\$47,674	\$53,880	\$72,120	\$154,908	\$141,557	\$56,207	\$105,120	\$137,889
Business	591,084	1,017,513	2,101,306	1,837,227	591,566	796,764	636,664	654,233
Dentistry	3,232,666	2,663,985	2,577,057	2,673,817	3,303,116	6,225,865	7,022,223	9,364,714
Education	2,341,529	3,595,195	4,449,812	5,199,144	5,245,171	5,358,150	4,084,336	4,262,885
Engineering	5,392,688	6,306,820	8,879,296	8,856,063	9,350,129	8,917,178	7,593,069	7,917,860
Graduate School						10,489	279,818	-528
Health Professions	4,048,876	5,132,254	4,212,837	7,776,274	6,754,711	6,910,792	6,920,179	7,518,229
Institutional / Provost	5,482,083	6,494,137	3,798,562	7,101,009	27,769,740	16,372,922	34,955,839	13,911,147
Joint Health Sciences	53,594,736	60,831,869	66,078,291	74,256,318	74,191,293	79,957,932	69,956,146	77,252,234
Lister Hill Library	19,733	14,288	6,756	7,487	87	47,486		-884
Medicine	145,846,399	160,737,495	178,317,861	175,846,797	206,562,681	225,144,830	217,508,031	222,036,846
Mervyn Sterne Library	19,152	25,237	10,568					-1,046
Natural Sciences & Math	6,143,299	6,302,248	6,638,069	7,290,068	8,333,255	9,458,478	10,479,473	11,201,108
Nursing	1,668,159	1,783,647	2,377,185	2,554,834	2,700,751	2,496,325	1,834,937	2,239,162
Optometry	19,231,057	20,065,319	15,407,118	14,220,027	13,723,062	12,020,148	11,278,503	10,544,430
Public Health	18,958,721	20,256,859	27,629,845	35,544,265	42,617,688	44,625,546	38,542,006	34,706,646
Social & Behavioral Sciences	9,606,896	10,173,896	10,456,034	9,556,322	10,397,511	9,296,234	5,518,132	5,426,049
Total	276,224,750	305,454,643	333,012,715	352,874,560	411,682,317	427,695,346	416,714,476	407,170,972

Notes: Includes indirect costs. Negatives represent expenditures from a prior year that were refunded to the sponsored project during the reporting year.

Source: Grants and Contracts Accounting

**SUMMARY OF UAB GRANTS AND CONTRACTS AWARDED  
FY 2008**

	<b>Federal</b>	<b>Industrial</b>	<b>Other Non-Federal</b>	<b>Total</b>	<b>Percent of Total</b>
Arts and Humanities	\$0	\$0	\$54,340	\$54,340	0.01%
Business	1,788,294	0	54,415	1,842,709	0.44%
Dentistry	8,050,893	373,970	504,890	8,929,753	2.14%
Education	2,068,015	0	1,613,175	3,681,190	0.88%
Engineering	3,041,639	921,432	3,540,420	7,503,491	1.80%
Health Professions	7,902,024	836,687	729,862	9,468,573	2.27%
Joint Health Sciences	62,798,112	2,576,501	10,609,884	75,984,497	18.20%
Medicine	135,582,367	34,616,825	72,103,632	242,302,824	58.03%
Natural Sciences and Mathematics	8,123,836	66,347	2,390,003	10,580,186	2.53%
Nursing	2,871,747	0	876,075	3,747,822	0.90%
Optometry	6,762,559	161,196	2,545,769	9,469,524	2.27%
Public Health	24,872,703	1,215,613	8,168,319	34,256,635	8.20%
Social and Behavioral Sciences	4,738,980	0	751,168	5,490,148	1.31%
Central Administration	2,681,506	0	610,234	3,291,740	0.79%
Health System Administration	0	0	946,666	946,666	0.23%
<b>UAB TOTAL</b>	<b>\$271,282,675</b>	<b>\$40,768,571</b>	<b>\$105,498,852</b>	<b>\$417,550,098</b>	<b>100.00%</b>
<b>Percent of Total</b>	<b>64.97%</b>	<b>9.76%</b>	<b>25.27%</b>	<b>100.00%</b>	

NOTE: These data were generated from the ESIS grants and contracts computer system.

Source: Office of Grants and Contracts Administration

**UAB BUILDING SUMMARY  
FALL 2008**

Category	Building Name	Gross Square Footage	Construction Completed or Acquired	
Hospital	2020 Building	9,854	1988 *	
	502 Building	8,764	2005	(L)
	Center for Psychiatric Medicine	161,863	1992	
	Center for Psychiatric Medicine Parking	25,695	1992	
	General Services Building	52,973	1979	
	General Services Building 3rd, 4th, and 5th Floor Expansior	78,121	1991	
	Hospital Support Building	43,717	2004	
	Jefferson Tower	298,982	1940	
	Jefferson Tower - South Wing Addition	22,800	1970	
	Kracke Building	40,187	1928	
	New Hillman Building	62,415	1928	
	North Pavilion (UAB Hospital)	876,625	2004	
	North Wing-Jefferson Tower Addition	122,281	1966	
	Old Hillman Building	46,080	1902	
	Quarterback Tower	92,682	1976	
	Russell Ambulatory Wing, University Hospita	93,992	1977	
	Spain & McDonald Clinic	8,785	1990 *	(N)
	Spain Rehabilitation Center	65,016	1963	
	Spain Rehabilitation Center - Pizitz Memorial Pool Additio	3,008	1987	
	Spain Rehabilitation Center Additior	35,659	1969	
	Spain Rehabilitation Center Addition I	50,975	1991	
	Spain Tower (South half of Spain/Wallace Building)	127,298	1979	
	Spain Tower 8th and 9th Floor Expansior	37,622	1984	
	Spain Tower Kidney Transplant Unit Expansior	18,243	1982	
	Trash Compactor Facility	2,262	1982	
	Trauma Community Center	1,731	1960 *	
	Wallace Tower (North half of Spain/Wallace Building)	104,075	1979	
	Wallace Tower 7th, 8th, and 9th Floor Expansior	46,404	1984	
	West Pavilion	43,029	1991	
	White Building	3,221	1991 *	
Leased	1515 Building	10,000	2001	(R)
	1605 Building	2,879	2007	(R)
	1633 Building	3,100	2007	(R)
	1701 Building	4,372	2005	(R)
	200 Building	19,600	2005	(R)
	725 Building	14,400	1999	(R)
	8215 Building	1,083	1999	(R)
	Arlington Business Center	9,836	1987	(R)
	Callahan Eye Foundation Hospita	221,984	1988	(R)
	Callahan Eye Foundation Hospital Parking Decl	185,862	1988	(R)
	Children's Hospital Ambulatory Care Cente	99,025	1994	(R)
	Children's Hospital Harbor Center	63,619	2003	(R)
	Children's Hospital Tower	17,764	1992	(R)
	Cooper Green Hospital Parking Deck	14,400	1986	(R)
	Health Clinic (Hoover)	209	2002	(R)
	Health Clinic (Hueytown)	209	2002	(R)
	Health Clinic (Inverness)	3,730	2002	(R)
	Health Clinic (Moody)	275	2002	(R)
	Health Clinic (Roebuck)	3000	1996	(R)
	Kirklin Clinic	20,427	1999	(R)
	Kirklin Clinic Acton Road	319	2005	(R)
	Kirklin Clinic Parking Deck	4,707	2001	(R)
	Liberty National Building	149,365	1954	(R)
	Magnolia Office Park Suite	7,938	2005	(R)
	Medical Towers	124,410	1975	(R)
	Narrow Lane Road Building	16,545	1999	(R)
	Paula Building	21,084	2000	(R)
	Southern Research Institute	10,475	2002	(R)
	Southside YMCA	1,288	2008	(R)
	Substance Abuse Center - Bessemer	4,783	1966	(R)
	Substance Abuse Center - Campus	32,714	1993 *	
	University Park Business Center	30,567	1990	(R)
	Vaughan Regional Medical Center (Selma)	22,750	2005	(N)
	Veterans' Affairs Medical Center	3,453	1990	(R)
Parking	10th Avenue Parking Deck	146,306	1981 *	
	12th Street Parking Deck	224,916	2004	(R)



**UAB BUILDING SUMMARY  
FALL 2008**

Category	Building Name	Gross Square Footage	Construction Completed or Acquired	
Parking (Continued)	16th Street Parking Deck	477,631	2006	
	19th Street Parking Deck	195,491	1970	
	19th Street Parking Deck Expansior	101,220	1991	
	5th Avenue Parking Deck	281,000	2000	(R)
	6th Avenue Park Deck Additior	179,386	2003	
	6th Avenue Parking Deck	411,148	1982	
	9th Avenue Parking Deck	215,747	1996	
	Administration Building Parking Deck	130,754	1994 *	
University	University Boulevard Parking Decl	258,807	1987	
	1001 Building	9,574	2006 *	
	1043 Building	3,203	1975 *	
	1055 Building	8,157	1974 *	
	1200 Building (Food Fair Southern Family Markets)	22,993	2007	(N)
	1430 Warehouse	25,688	1995 *	
	1711 Building	2,155	1986 *	
	1715 Building	1,650	1986 *	
	501 Building	59,474	2001 *	(L)
	516 Building	4,584	2000	(N)
	526 Building	3,528	1993	
	616 Building	7,148	2006 *	(L)
	711 Building	5,416	1971 *	
	820 Building	8,693	2006 *	(L)
	822 Building	8,775	2006 *	
	912 Building	25,455	2001	
	917 Building	3,447	1974 *	(L)
	9th Avenue Office Building	5,650	2003	
	Administration Building	195,119	1993 *	
	Alys Robinson Stephens Performing Arts Center	115,465	1996	
	Alys Robinson Stephens Performing Arts Center Additior	1,932	2004	
	Arts Annex	6,207	1977 *	
	Bartow Arena	166,677	1988	
	Bartow Arena Office Towers	18,988	1992	
	Bell Building	47,339	1955	
	Best Western Inn-Medical Center		1985*	(L)
	Bevill Biomedical Sciences Research Building	223,712	1993	
	Biomedical Research Building I	96,598	2002	
	Birmingham Regional Emerg. Medical Services System (BREMSS)	4,157	1985 *	
	Blazer Hall II (Student Residence)			(D)
	Blount Hall (Student Residence)			(D)
	Boshell Diabetes Education and Research Building	128,544	1973	
	Bridges (Enclosed)	46,684	NA	
	Burleson Building	9,619	1988 *	
	Business and Engineering Comple	138,841	1983	
	Camp Hall (Student Residence)	156,763	1980	
	Campbell Hall	103,089	1978	
	Campbell Hall 3rd and 4th Floor Expansior	101,898	1991	
	Campus Recreation Center	154,623	2005	
	Campus Services Facility	5,035	1989 *	
	Campus Services Trailer	720	1990	
	Cancer Research Center	38,075	1982	
	Center for Biophysical Sciences and Engineering	58,292	1989 *	
	Center for Biophysical Sciences and Engineering Additior	19,373	2001	
	Center for Labor Education and Research (CLEAR)	4,775	1975 *	
	Center for Nuclear Imaging Research	14,481	1986	
	Center for Research in Women's Health	25,587	2001	
	Central Laundry Building	35,682	1986	(L)
	Central Support Building	107,371	1987 *	
	Central Utility No. 1 and Additior	22,334	1971	
	Central Utility No. 3 and Additior	27,559	1991	
	Central Utility No. 5	22,659	2004	
	Chauncey Sparks Center	110,610	1969	
	Chemistry Annex	7,694	1978	
	Chemistry Building	44,093	1972	
	Chemistry Building 3rd Floor Additior	22,447	2005	
	Chevron Building	48,167	1989 *	
	CIDRZ Lusaka Zambia	8,960	1998	(R)

**UAB BUILDING SUMMARY  
FALL 2008**

<b>Category</b>	<b>Building Name</b>	<b>Gross Square Footage</b>	<b>Construction Completed or Acquired</b>	
<b>University (Continued)</b>	Civitan International Research Center	59,165	1992	
	Community Care Building	59,562	1991 *	
	Community Health Services - 19th	87,860	1981 *	
	Community Health Services - 20th	66,331	1979 *	
	Cook Springs Farm (5 Buildings)	17,411	1980 *	
	Cudworth Building	48,273	1963	
	Denman Hall (Student Residence)	68,839	1973	
	Dixie Warehouse	4,000	1995	(R)
	Dowdy Building	2,623	1971 *	
	Education Building	110,417	1971	
	Education Building Parking	32,930	1971	
	Engel Day Treatment Center	4,895	1970	
	Engel Day Treatment Center Additior	15,828	1975	
	Facilities Administration Annex No. 1	3,166	1994 *	
	Facilities Administration Building	24,590	1994 *	
	Facilities Training Center	1,790	1995	
	Faculty Office Tower	102,731	2003	
	Fleet Operations Center	1,302	1989 *	
	Hansell/Hulsey Center Additior	6,182	2004	(N)
	Hansell/Hulsey Center for Arts and Humanities	52,395	1981	(N)
	Henry Peters Building	77,950	1975	
	Henry Peters Building Parking	27,302	1975	
	Heritage Hall Building	99,948	2007	(N)
	Hill University Center	138,926	1983	
	Hill University Center - Auto Tellers	625	1984	
	Hoehn Engineering Building	36,384	1986	
	Hoehn Engineering Building Additior	3,178	1997	
	Holcomb Building	1,297	1999	(R)
	Holley-Mears Building	10,968	1978 *	
	Humanities Building	64,173	1972	
	Huntsville - UAB Regional Medical Health Cente	94,713	2003	
	Innovation Depot	120,963	2007	(R)
	John N. Whitaker Building	13,619	2001	(R)
	Johnson House (1006 19th Street South)	9,943	1985 *	
	Kaul Human Genetics Building	160,118	2001	
	Learning Resources Center	79,332	1970	
	Lister Hill Library	49,125	1971	
	Lister Hill Library Addition	88,547	1996	
	Lister Hill Parking	13,224	1971	
	Lyons-Harrison Research Building	92,857	1959	
	Lyons-Harrison Research Building Additior	43,302	1966	
	Marshall Conference Center	3,264	1973 *	
	McCallum Basic Health Science Education and Research Facility	174,884	1986	
	Medical Education Building	49,865	1977	
	Midtown Center (Children's Hospital)	14,658	1999	(R)
	Morningside Drive	2,900	1995 *	
	Motor Pool (Storage)	6,032	1972 *	
	Newburn Building	1,276	2006	(R)
	OADI Technology Center	68,496	1997	
	Obstetrics Special Care	18,331	1983 *	
	Park Place II North	6,714	2008	(R)
	Pittman Center for Advanced Medical Studies	7,140	1980	
	Police Annex	1,480	1992 *	
	Police Headquarters Building	12,713	1992 *	
	Police Support Building	3,893	1971 *	
	Radiology Film Storage Building	12,716	1992	(R)
	Rast Hall (Student Residence)	129,168	1990	
	Research Support Building	103,321	2006	
	Ronald McDonald House	21,914	2005	
	ROTC Building	4,784	1975 *	
	Ruffner Mountain Transmitter Station	150	1975	
	Rust Center Parking	53,751	1969	
	Rust Computer Center	24,523	1969	
	Ryals Public Health Building (Floors 1 & 2)	40,989	1996	
	Ryals Public Health Building (Floors 3 & 4)	36,971	1998	
	Ryals Public Health Building (Floors 5 & 6)	37,476	2000	

**UAB BUILDING SUMMARY  
FALL 2008**

<b>Category</b>	<b>Building Name</b>	<b>Gross Square Footage</b>	<b>Construction Completed or Acquired</b>	
University (Continued)	Samuel Ullman Museum	5,426	1993 *	
	Scene Shop	6,908	1975 *	
	School of Dentistry Building	109,629	1951	(N)
	School of Dentistry Building Additior	51,897	1975	(N)
	School of Dentistry Building Storage Additior	1,272	1976	(N)
	School of Dentistry Clinic	43,264	1951	(N)
	School of Health Professions	76,644	2001	(N)
	School of Nursing Additional Space	3,216	2007	
	School of Nursing Building	77,946	1971	(N)
	School of Nursing Parking	37,813	1971	(N)
	School of Nursing West Addition	6,523	1992	(N)
	Shelby Interdisciplinary Biomedical Research Building	320,791	2006	
	Smolian International House	9,472	1992	
	Smolian Psychiatric Clinic	22,358	1960	
	Sorority Square Building	9,018	1989 *	
	Southeastern BIO-Safety Lab	48,164	2008	
	Spencer Honors House	9,408	1903 *	
	Sterne Library	79,385	1973	
	Sterne Library Additior	90,371	1987	
	Tinsley Harrison Tower	131,657	1984	
	Town House	106,818	1985 *	
	UAB Child Care Center	6,213	1993	
	Ullman Boiler Building	5,348	1978	
	Ullman Building	29,474	1910	
	Ullman Building West Addition	20,414	1950	
	University Boulevard Office Building	36,105	2005	
	University Dining Facility (The Commons)	28,177	2006	
	University Place Apartments	86,552	1986 *	(L)(N)
	University Stores Warehouse/Anne	147,775	1985 *	
	Volker Hall	394,374	1971	
	Volker Hall Basement Additior	35,626	1996	
	Volker Hall Instructional Addition	65,529	2003	
	Volker Hall Parking	13,144	1971	
	Wallace Physical Education Facility	52,653	1974	
	Wallace Tumor Institute	73,211	1976	
	Wallace Tumor Institute 4th, 5th, and 6th Floor Expansion	74,272	1992	
	Wallace Tumor Institute NMR Addition	11,830	1985	
	Waste Holding Facility	18,780	1987 *	
	WBHM	4,510	1971	
	WBHM Addition	2,640	1980	
	Webb Nutrition Sciences Building	71,443	1983	
	West Playing Fields Building	800	1996	
	Woodward Estate (3 Buildings)	31,339	1971 *	
	Worrell Building	37,484	1986 *	
	Worrell Building Addition	4,968	2002	
	Young Memorial Field Building	2,458	1984	
	Zeigler Research Center	114,912	1971	

\*Acquired

(R) = Externally owned; UAB rents space

(L) = UAB-owned; space leased out

(N) = Name changed

(D) = Developer Owned and Operated

**Under Construction**

Block 176 Facility

**UAB SPACE BY FUNDING UNIT  
(Gross Square Footage)**

<b>Year Ending</b>	<b>Educational/ General</b>	<b>Auxiliary</b>	<b>Hospital</b>	<b>Total</b>
June 30, 1990 <sup>1</sup>	3,987,318	2,658,145	1,543,062	8,188,525
June 30, 1995 <sup>1</sup>	4,717,977	3,199,602	2,120,623	10,038,202
June 30, 2000 <sup>1</sup>	5,248,700	3,617,182	2,007,712	10,873,594
June 30, 2004 <sup>1</sup>	6,254,986	3,715,081	1,756,963	11,727,030
June 30, 2005 <sup>1</sup>	6,359,404	3,803,705	2,556,626	12,719,735
June 30, 2006 <sup>2</sup>	6,707,992	3,607,382	2,547,904	12,863,278
June 30, 2007 <sup>2</sup>	6,717,672	3,630,674	2,608,032	12,956,378
June 30, 2008 <sup>2</sup>	6,927,272	3,591,055	2,614,069	13,132,396

Source: ACHE Space Data Report

**UAB BUILDING REPLACEMENT COSTS  
(FY 2008-09, Construction Only)**

\$2,467,523,958

**FUNDING SOURCES  
New Construction and Major Renovations  
(Fiscal Years 1969-2008)**

	<b><u>UAB Funds</u></b>	<b><u>State Funds</u></b>	<b><u>Private Funds</u></b>	<b><u>Federal Funds</u></b>	<b><u>Total<sup>4</sup></u></b>
Projects Capitalized <sup>3</sup>	\$1,313,501,462	\$118,778,508	\$92,091,554	\$188,346,676	\$1,712,718,200
Percent of Total	76.7%	6.9%	5.4%	11.0%	100.0%

Source: Financial Affairs

**CAPITALIZED EXPENDITURES  
(New Construction and Major Renovations)**

**1969-2003**  
\$1,150,834,627

<b><u>2004</u></b>	<b><u>2005</u></b>	<b><u>2006</u></b>	<b><u>2007</u></b>	<b><u>2008</u></b>	<b><u>Total<sup>4</sup></u></b>
\$136,055,304	\$125,745,440	\$73,569,924	\$94,008,614	\$132,504,291	\$1,712,718,200

Source: Financial Affairs

<sup>1</sup>Includes space leased by UAB and space rented out to others; excludes shell space.

<sup>2</sup>Excludes space leased by UAB and space rented out to others; excludes shell space.

<sup>3</sup>Includes buildings and building improvements capitalized as of 9/30/08; includes investment in plant funds (\$1,729,647,093) less separate campus acquired (\$16,928,893).

<sup>4</sup>Reflects capitalization adjustments in prior years.

## UAB SPACE DISTRIBUTION (AS OF SEPTEMBER 30, 2008)

<u>Space Use</u>	<u>Total Net Assignable Square Feet</u>	<u>Central Administration</u>	<u>Joint Health Sciences / First Professional<sup>1</sup></u>	<u>General Academic</u>	<u>University Hospital</u>	<u>Auxiliary</u>	<u>Non- Institutional Agency</u>
Classroom Facilities	164,760	93,057	31,840	39,858	5	0	0
Laboratory Facilities							
Instructional	431,586	9,772	172,030	248,814	964	0	6
Sponsored Research	577,459	0	520,786	56,556	0	0	117
Other	314,380	102,152	165,405	32,127	7,396	0	7,300
Office Facilities	2,030,030	356,915	931,983	359,922	295,949	13,446	71,815
Central Libraries (excludes offices)	205,833	500	62,316	142,547	470	0	0
Special Use Facilities <sup>2</sup>	392,156	134,654	185,670	21,139	37,989	0	12,704
General Use Facilities <sup>3</sup>	547,980	280,319	68,520	31,116	119,315	6,725	41,985
Support Facilities <sup>4</sup>	700,327	431,605	64,038	50,539	109,079	14,896	30,170
Highrise & Enclosed Parking Facilities	2,525,715	1,141	0	0	0	2,524,574	0
Health Care Facilities <sup>5</sup>	918,766	1,793	26,616	106	890,251	0	0
Residential Facilities <sup>6</sup>	368,432	25,400	6,841	0	474	279,710	56,007
Unclassified <sup>7</sup>	9,107	1,797	5,584	1,726	0	0	0
<b>TOTAL</b>	<b>9,186,531<sup>8</sup></b>	<b>1,439,105</b>	<b>2,241,629</b>	<b>984,450</b>	<b>1,461,892</b>	<b>2,839,351</b>	<b>220,104</b>

<sup>1</sup>Includes Schools of Dentistry, Medicine, and Optometry.

<sup>2</sup>Special Use Facilities include those used for athletics/physical education, audiovisual-radio-TV, non-health professional clinics, demonstrations, and greenhouses.

<sup>3</sup>General Use Facilities include spaces for assembly, exhibition, food services, lounges, day care, merchandising, recreation, meetings, and locker rooms.

<sup>4</sup>Support Facilities include central computer, central service, telecommunications, shop, storage, and hazardous materials spaces.

<sup>5</sup>Health Care Facilities include patient bedrooms and baths, nurses' stations, surgery and treatment rooms, service laboratories, supply rooms, public waiting rooms, health care service rooms, call rooms, and staff support space.

<sup>6</sup>Residential Facilities include apartments, residence halls, houses, and hotel rooms. Does not include Blazer Hall II or Blount Hall residence halls.

<sup>7</sup>Unclassified spaces are those not yet assigned or to be renovated.

<sup>8</sup>Excludes shelled space.

Source: Cost Analysis - Space Analysis