



# **FACTS & FIGURES**

## **2012-2013**

# **FACTS & FIGURES 2012-2013**

Thirty-third Edition

May 2013

Office of Institutional Effectiveness and Analysis  
UNIVERSITY OF ALABAMA AT BIRMINGHAM  
Birmingham, Alabama 35294-0104  
(205) 934-2384  
[www.uab.edu/institutionaleffectiveness](http://www.uab.edu/institutionaleffectiveness)

## FOREWORD

The Office of Institutional Effectiveness and Analysis is pleased to present *Facts & Figures 2012-2013*. This is the 33<sup>rd</sup> edition of the UAB factbook, the fifteenth edition available electronically on the web. *Facts & Figures* is compiled by the Office of Institutional Effectiveness and Analysis but reflects contributions from offices all over campus. We remain grateful for our contributors' continued assistance.

*Facts & Figures* can be easily accessed electronically via the Office of Institutional Effectiveness and Analysis web site ([www.uab.edu/institutionaleffectiveness](http://www.uab.edu/institutionaleffectiveness)).

Our objective with this factbook is to produce a useful and usable resource for a variety of information needs. Therefore, we welcome and appreciate your comments and suggestions about the content of *Facts & Figures*.

## TABLE OF CONTENTS

### **GENERAL INFORMATION**

UAB's Strategic Plan.....	7
The Board of Trustees .....	8
Administration .....	9
UAB Organizational Structure.....	11
Academic Departments and Chairs .....	12
Significant Dates .....	15
UAB Presidents .....	16
Honorary UAB Degrees Conferred .....	17
President's Medal.....	19
Distinguished Alumni Award .....	19
Program Accreditation.....	20
Hospital Statistical Highlights.....	25
Library Statistics Fall 2012.....	26
Athletics.....	27

### **STUDENT INFORMATION**

Fall Semester 2012 Enrollment by School and Level.....	29
Fall Semester 2012 Enrollment Full-time and Part-time by Race and Gender.....	30
Fall Enrollment by Race and Level 2007-2012 .....	31
Fall Semester 2012 Student Demographics	
Total .....	32
Undergraduate .....	33
Entering Freshmen.....	34
Graduate .....	35
DMD, MD, OD .....	36
Students by Source Fall 2012.....	37
Fall Enrollment by School 2007-2012 .....	38
Fall Enrollment by Class 2007-2012 .....	38
Fall Enrollment by Student Level 1969-2012 .....	39
Fall Headcount Enrollment 1969-2012 (Chart) .....	40
Fall Enrollment Full-time and Part-time by Gender 1985-2012 .....	41
Fall Enrollment by Student Source 2008-2012 .....	41
Credit Hour Production Fall 2012.....	42
Annual Credit Hour Production by School 2005-06 through 2011-12 .....	43
Degrees Offered at UAB .....	45
Total Degrees Available .....	48
Degrees Awarded by School 1969-70 through 2011-12.....	49
Degrees Conferred July 1, 1969 - June 30, 2012.....	51
Doctor's Degrees Conferred by Category July 1, 2009 - June 30, 2012 .....	52
Required Student Tuition and Fees Fall 2012 .....	53
Student Aid Funds Available 2005-06 through 2011-12 .....	54

## **FACULTY AND STAFF**

Work Force FY 2012-2013.....	56
Work Force by Area, Status, Gender, and Job Category 2006-07 through 2012-13 .....	57
Work Force by Area, Status, and EEO Category 2006-07 through 2012-13 (Charts).....	58
Full-Time Work Force and Payroll 2002 through 2012 .....	59
Full-Time Faculty by Rank, Gender, and Tenure Status Fall 2012.....	60
Highest Degrees of Full-Time Faculty by School by Rank Fall 2012.....	63
Endowed Positions at UAB .....	66
Faculty Awards and Honors .....	70

## **FINANCIAL AND PHYSICAL RESOURCES**

Selected Financial Highlights FY 2009-10 through FY 2011-12.....	76
Financial Profile FY 2011-12 Actual.....	77
Financial Profile FY 2011-12 Actual (Chart) .....	78
State Funding from the Educational Trust Fund as Enacted FY 1967-68 to FY 2012-13 .....	79
Sponsored Project Expenditures FY 2006 through FY 2012.....	81
Summary of Grants and Contracts Awarded FY 2012 .....	82
Building Summary Fall 2012 .....	83
Space by Funding Unit .....	87
Funding Sources for New Construction and Major Renovations 1969-2012.....	87
Capitalized Expenditures for New Construction and Major Renovations 1969-2012.....	87
Space Distribution (as of September 30, 2012) .....	88

# **GENERAL INFORMATION**

**UAB'S STRATEGIC PLAN**  
**UAB21: UAB's Vision for the 21<sup>st</sup> Century**  
<http://www.uab.edu/plan/goals-a-objectives>

**Vision:**

An internationally renowned research university – a first choice for education and health care.

**Mission:**

UAB is a research university and academic health center that discovers, teaches and applies knowledge for the intellectual, cultural, social and economic benefit of Birmingham, the state and beyond.

**Goals:**

*I: Transforming Undergraduate Learning*

We will provide a student-centered, collaborative learning experience to prepare diverse students for rewarding careers and lives that benefit society and our regional and global economy.

*II: Transforming Graduate and Professional Education*

We will offer exceptional graduate and professional programs that prepare diverse students to lead, teach, conduct research, provide professional services, become the prominent scholars and societal leaders of the future, and contribute to our region's prosperity.

*III: Research and Scholarship*

We will expand UAB's capability to discover and share new knowledge that benefits society, spurs innovation, fosters the region's economic development, and further positions UAB as an internationally renowned research university.

*IV: Service to Community and State*

We will partner with our community and state to improve education, health, quality of life and economic development.

*V: Community/Financial Support*

We will partner with the larger community to garner financial and other support to achieve our common goals.

*VI: Living/Learning/Working Environment*

We will create a consumer friendly, positive, supportive, and diverse environment in which students, faculty and staff can excel.

# THE BOARD OF TRUSTEES OF THE UNIVERSITY OF ALABAMA

The Honorable Robert Bentley  
Governor of Alabama  
*Ex officio*

Dr. Thomas R. Bice  
State Superintendent of Education  
*Ex officio*

## TRUSTEES (by Congressional district)

First:	Marietta M. Urquhart, Mobile Harris V. Morrisette, Mobile	Fifth:	Ronald W. Gray, Huntsville William Britt Sexton, Decatur
Second:	Joseph C. Espy III, Montgomery W. Davis Malone III, Dothan	Sixth:	Vanessa Leonard, Rockford John J. McMahon Jr., Birmingham
Third:	Kenneth L. Vandervoort, M.D., Anniston James W. Wilson III, Montgomery	Seventh:	Karen Phifer Brooks, Tuscaloosa John H. England Jr., Tuscaloosa Andria S. Hurst, Birmingham
Fourth:	Finis E. St. John IV, Cullman Paul W. Bryant Jr., Tuscaloosa ( <i>President pro tempore</i> )		

## TRUSTEES EMERITI

Frank H. Bromberg Jr., Birmingham  
Angus R. Cooper II, Mobile  
Oliver H. Delchamps Jr., Fairhope  
Garry Neil Drummond, Birmingham  
Jack Edwards, Mobile  
Joseph L. Fine, Montgomery  
Sandra Hullett, M.D., Eutaw  
Peter L. Lowe, Huntsville  
Sidney L. McDonald, Arab  
John T. Oliver Jr., Jasper  
Joe H. Ritch, Huntsville  
Yetta G. Samford Jr., Opelika  
Cleophus Thomas Jr., Anniston  
John Russell Thomas, Alexander City

\*\*\*\*\*

Chancellor: Robert E. Witt, Ph.D.

Secretary of the Board: Michael A. Bownes

General Counsel: R. Cooper Shattuck



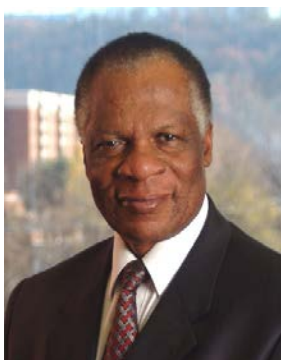
# ADMINISTRATION



DR. RAY L. WATTS  
President



DR. LINDA C. LUCAS  
Provost



DR. LOUIS DALE  
Vice President for  
Equity and Diversity



DR. WILLIAM FERNIANY  
Chief Executive Officer,  
UAB Health System



DR. SHIRLEY SALLOWAY KAHN  
Vice President for Development,  
Alumni, and External Relations



DR. RICHARD B. MARCHASE  
Vice President for Research  
and Economic Development



RICHARD L. MARGISON  
Vice President for Financial  
Affairs and Administration



DR. DOUGLAS RIGNEY  
Interim Vice President for  
Information Technology

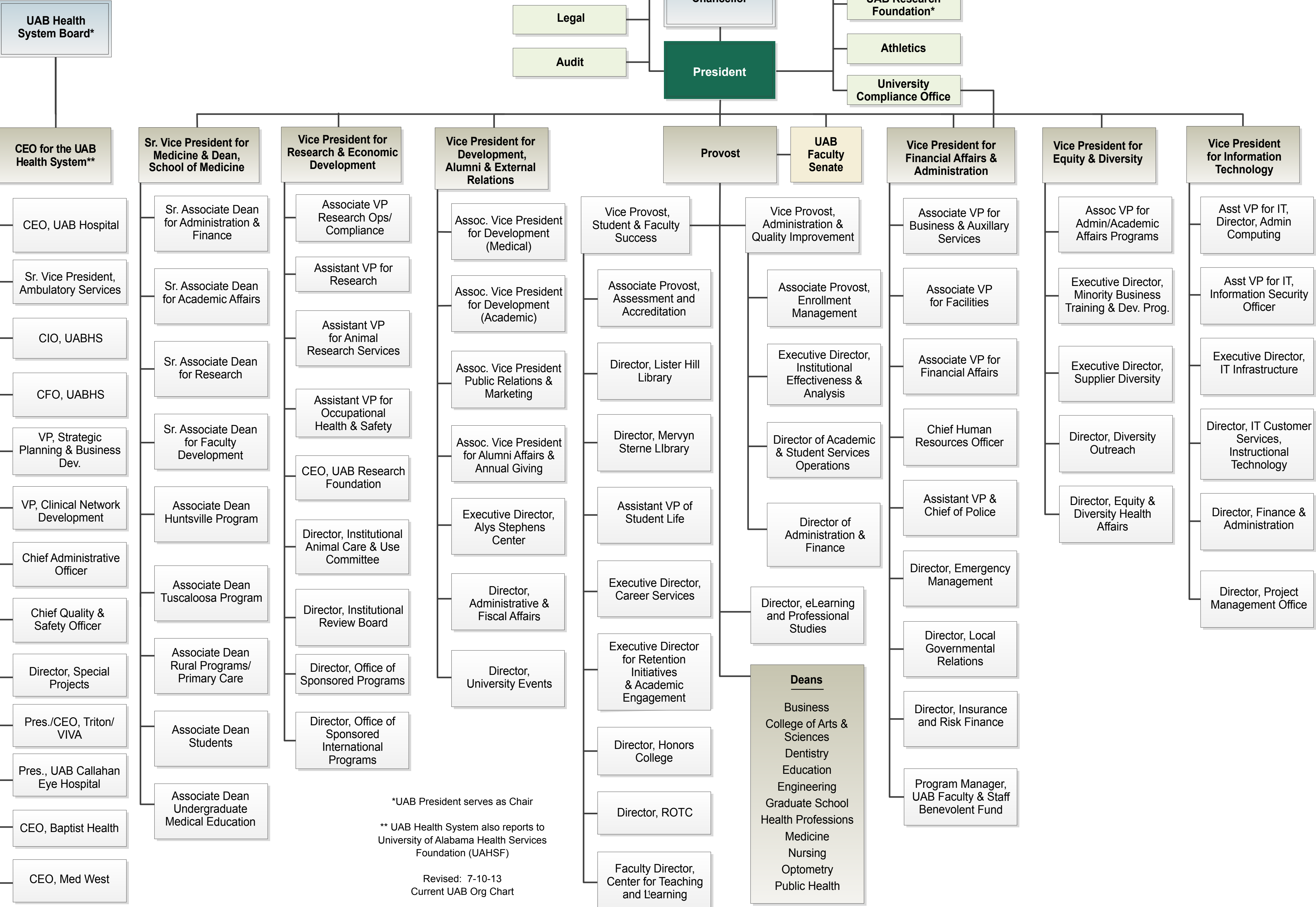


DR. ANUPAM AGARWAL  
Senior Vice President  
for Medicine and Dean,  
School of Medicine

## UAB ADMINISTRATION

<b><u>Academic Unit (Date of Establishment)</u></b>	<b><u>Dean/Administrator</u></b>
College of Arts and Sciences (2010)	Robert Palazzo, Ph.D., Dean
School of Business (1971)	Eric P. Jack, Ph.D., Dean
School of Dentistry (1945)	Michael S. Reddy, D.M.D., Dean
School of Education (1971)	Deborah L. Voltz, Ed.D., Dean
School of Engineering (1971)	Melinda M. Lalor, Ph.D., Interim Dean
School of Health Professions (1969)	Harold P. Jones, Ph.D., Dean
School of Medicine (1945*)	Anupam Agarwal, M.D., Interim Senior Vice President/Dean
School of Nursing (1967*)	Doreen C. Harper, Ph.D., Dean
School of Optometry (1969)	Rodney Nowakowski, O.D., Dean
School of Public Health (1981)	Max Michael III, M.D., Dean
Graduate School (1970)	Bryan D. Noe, Ph.D., Dean
UAB University Hospital (1945)	Art Boudreaux, M.D., Chief of Staff

\* Moved to Birmingham from Tuscaloosa.



\*UAB President serves as Chair

\*\* UAB Health System also reports to University of Alabama Health Services Foundation (UAHSF)

Revised: 7-10-13  
Current UAB Org Chart

## **UAB ACADEMIC DEPARTMENTS AND CHAIRS**

### **College of Arts and Sciences**

Anthropology  
Art and Art History  
Biology  
Chemistry  
Communication Studies  
Computer and Information Sciences  
English  
Foreign Languages and Literatures  
Government  
History  
Justice Sciences  
Mathematics  
Music  
Philosophy  
Physics  
Psychology  
Sociology  
Social Work  
Theatre

### **Chair**

Sharyn R. Jones, Ph.D.  
Erin Wright, M.F.A.  
Robert W. Thacker, Ph.D., Interim  
David E. Graves, Ph.D.  
John W. Wittig, Ph.D., Interim  
Anthony Skjellum, Ph.D.  
Peter J. Bellis, Ph.D.  
Serge Bokobza, Ph.D.  
Wendy Gunther-Canada, Ph.D.  
Colin J. Davis, Ph.D.  
John J. Sloan III, Ph.D.  
Rudi Weikard, Ph.D.  
Howard L. Irving, Ph.D.  
Gregory E. Pence, Ph.D.  
David L. Shealy, Ph.D.  
Karlene Ball, Ph.D.  
William C. Cockerham, Ph.D.  
William C. Cockerham, Ph.D., Interim  
Kelly Dean Allison, M.F.A.

### **School of Business**

Accounting and Finance  
Management, Information Systems, and  
Quantitative Methods  
Marketing, Industrial Distribution, and Economics

### **Chair**

Lary Cowart, Ph.D., Interim  
Molly Wasko, Ph.D.  
Robert Robicheaux, Ph.D.

### **School of Dentistry**

Endodontics  
Clinical and Community Services  
Oral and Maxillofacial Surgery  
Orthodontics  
Pediatric Dentistry  
Periodontology  
Restorative Services

### **Chair**

Paul D. Eleazer, D.D.S.  
Gregg H. Gilbert, D.D.S.  
Peter D. Waite, D.D.S., M.D.  
Chung H. Kau, B.D.S., M.Sc.D.  
Noel K. Childers, D.M.D., Ph.D.  
Nicolaas Geurs, D.D.S., M.S.  
Perng-Ru Liu, D.D.S.

### **School of Education**

Curriculum and Instruction  
Human Studies

### **Chair**

Lynn D. Kirkland, Ed.D.  
Kristi S. Menear, Ph.D.

## UAB ACADEMIC DEPARTMENTS AND CHAIRS (CONTINUED)

### **School of Engineering**

Biomedical Engineering  
Civil, Construction, and Environmental Engineering  
Electrical and Computer Engineering  
Materials Science and Engineering  
Mechanical Engineering

### **Chair**

Timothy M. Wick, Ph.D.  
Fouad H. Fouad, Ph.D.  
Allen Tannenbaum, Ph.D., Interim  
J. Barry Andrews, Ph.D.  
Bharat K. Soni, Ph.D.

### **School of Health Professions**

Clinical and Diagnostic Sciences  
Health Services Administration  
Nutrition Sciences\*  
Occupational Therapy  
Physical Therapy

### **Chair**

Janelle M. Chiasera, Ph.D.  
Gerald L. Glandon, Ph.D.  
W. Timothy Garvey, M.D.  
Brian J. Dudgeon, Ph.D.  
Sharon E. Shaw, Dr.P.H.

### **Joint Health Sciences**

Biochemistry and Molecular Genetics  
Cell, Developmental and Integrative Biology  
Genetics  
Microbiology  
Neurobiology  
Nutrition Sciences\*  
Pathology  
Pharmacology and Toxicology

### **Chair**

Tim M. Townes, Ph.D.  
Etty Benveniste, Ph.D.  
Bruce R. Korf, M.D.  
Frances Lund, Ph.D.  
J. David Sweatt, Ph.D.  
W. Timothy Garvey, M.D.  
Kevin A. Roth, M.D., Ph.D.  
Mary-Ann Bjornsti, Ph.D.

### **School of Medicine**

Anesthesiology  
Dermatology  
Emergency Medicine  
Family and Community Medicine  
Medical Education  
Medicine  
Neurology  
Obstetrics and Gynecology  
Ophthalmology  
Pediatrics  
Physical Medicine and Rehabilitation  
Psychiatry and Behavioral Neurobiology  
Radiation Oncology  
Radiology  
Surgery  
Urology

### **Chair**

Keith A. Jones, M.D.  
Craig A. Elms, M.D.  
Janyce M. Sanford, M.D.  
T. Michael Harrington, M.D.  
Hughes Evans, M.D.  
Seth Landefeld, M.D.  
David G. Standaert, M.D.  
William W. Andrews, M.D.  
Christopher A. Girkin, M.D.  
Sergio B. Stagno, M.D.  
Amie B. McClain, M.D.  
James Meador-Woodruff, M.D.  
James A. Bonner, M.D.  
Cheri L. Canon, M.D.  
Kirby I. Bland, M.D.  
Dean G. Assimos, M.D.

## **UAB ACADEMIC DEPARTMENTS AND CHAIRS (CONTINUED)**

### **School of Nursing**

Adult/Acute Health, Chronic Care, and Foundations  
Community Health, Outcomes and Systems  
Family/Child Health and Caregiving

### **Chair**

Jacqueline Moss, Ph.D.  
Kathleen C. Brown, Ph.D.  
Becky J. Christian, Ph.D.

### **School of Optometry**

Optometry  
Vision Sciences

### **Chair**

William J. Benjamin, O.D., Ph.D., Interim  
Om P. Srivastava, Ph.D., Interim

### **School of Public Health**

Biostatistics  
Environmental Health Sciences  
Epidemiology  
Health Behavior  
Health Care Organization and Policy

### **Chair**

Naomi Fineberg, Ph.D.  
Michelle Fanucchi, Ph.D., Interim  
Donna K. Arnett, Ph.D.  
Jalie Tucker, Ph.D.  
Meredith Kilgore, Ph.D.

\*Joint with the Schools of Dentistry, Health Professions, and Medicine.

## **SIGNIFICANT UAB DATES**

- 1821 - Board of Trustees of the University of Alabama created by the General Assembly
- 1936 - Extension Center of the University of Alabama opened in Birmingham
- 1945 - School of Medicine moved from Tuscaloosa to Birmingham and became a four-year school
- 1945 - Jefferson and Hillman Hospitals combined to serve as the teaching hospital for the School of Medicine
- 1948 - School of Dentistry, with Dr. Joseph F. Volker as dean, enrolled its first class
- 1955 - First Ph.D. earned on the Birmingham campus
- 1958 - Campus expansion began with acquisition of approximately 8.5 blocks (60 acres) from the Birmingham Housing Authority
- 1966 - Extension Center in Birmingham became the University of Alabama in Birmingham, one of three campuses of the University of Alabama
- 1966 - College of General Studies established
- 1966 - School of Health Services Administration established
- 1967 - School of Nursing moved from Tuscaloosa to Birmingham
- 1969 - UAB became an autonomous campus with Dr. Joseph F. Volker as its first president
- 1969 - School of Community and Allied Health Resources established by the Alabama Legislature and Regional Technical Institute established for health occupations training
- 1969 - School of Optometry established
- 1970 - Graduate School established
- 1970 - First degrees awarded by UAB
- 1971 - College of General Studies reorganized as University College with Schools of Business, Education, Engineering, and Arts and Sciences
- 1973 - School of Arts and Sciences restructured into Schools of Humanities, Natural Sciences and Mathematics, and Social and Behavioral Sciences
- 1975 - Funds appropriated by Legislature for the purchase of approximately 30 blocks (140 acres) of Urban Renewal lands for UAB expansion
- 1976 - Dr. Joseph F. Volker appointed first chancellor of the University of Alabama System
- 1977 - Dr. S. Richardson Hill Jr. named second president
- 1981 - School of Public Health established
- 1984 - University of Alabama in Birmingham became University of Alabama at Birmingham
- 1987 - Dr. Charles A. McCallum named third president
- 1987 - School of Community and Allied Health became School of Health Related Professions
- 1988 - School of Humanities became School of Arts and Humanities
- 1989 - UAB exceeded \$100 million in active grants and contracts
- 1989 - Use of the designation "University College" discontinued
- 1990 - 50,000th degree awarded by UAB
- 1992 - UAB's outpatient services moved to the newly constructed Kirklin Clinic
- 1993 - Dr. J. Claude Bennett named fourth president
- 1994 - UAB acquired Walker College, which became known as UAB Walker College
- 1994-95 - Certificate-level, junior college linkage programs (Regional Technical Institute) in the School of Health Related Professions phased out

## **SIGNIFICANT UAB DATES (CONTINUED)**

1995 - Academic units reorganized under provost  
1995 - UAB Health System established  
1995 - UAB exceeded \$200 million in active grants and contracts  
1997 - Mr. Paul Hardin named interim president  
1997 - Dr. W. Ann Reynolds named fifth president  
1998 - Relationship terminated between UAB and UAB Walker College  
1999 - UAB launched the public phase of a \$250 million capital campaign, the largest capital campaign in its history; goal was later raised to \$350 million  
1999 - Southern Research Institute affiliated with UAB  
2000 - UAB exceeded \$300 million in active grants and contracts  
2001 - UAB moved to a semester academic calendar  
2002 - University of Alabama Board of Trustees approved an affiliation agreement between the UAB Health System and Bessemer Carraway Medical Center  
2002 - Dr. Malcolm Portera, Chancellor of the University of Alabama System, named interim president  
2002 - Dr. Carol Z. Garrison named sixth president  
2003 - Capital campaign officially ends on December 31, having raised \$388.7 million for UAB  
2006 - School of Health Related Professions became School of Health Professions  
2007 - Degrees awarded by UAB surpassed 100,000  
2010 - Schools of Arts and Humanities, Education, Natural Sciences and Mathematics, and Social and Behavioral Sciences merged and realigned as the College of Arts and Sciences  
2010 - UAB Women & Infants Center opened to patients  
2010 - UAB Highlands became part of UAB Hospital  
2012 - Dr. Richard B. Marchase named interim president  
2012 - School of Education established as a separate school from the College of Arts and Sciences  
2013 - Dr. Ray L. Watts named seventh president

## **UAB PRESIDENTS**

Dr. Joseph F. Volker, 1969-1976  
Dr. S. Richardson Hill Jr., 1977-1987  
Dr. Charles A. McCallum, 1987-1993  
Dr. J. Claude Bennett, 1993-1996  
Mr. Paul Hardin (Interim), 1997  
Dr. W. Ann Reynolds, 1997-2002  
Dr. Malcolm Portera (Interim), 2002  
Dr. Carol Z. Garrison, 2002-2012  
Dr. Richard Marchase (Interim), 2012-13  
Dr. Ray L. Watts, 2013-Present



## HONORARY UAB DEGREES CONFERRED

<u>Name</u>	<u>Date Conferred*</u>	<u>Degree</u>
Champ Lyons	October 1, 1965	Doctor of Science
Tinsley Randolph Harrison	October 1, 1965	Doctor of Science
Walter Bouldin	August 29, 1966	Doctor of Laws
Matthew Francis McNulty Jr.	August 22, 1969	Doctor of Science
Ruth Lawson Hanson	August 22, 1969	Doctor of Humanities
Joseph F. Volker	June 6, 1970	Doctor of Science
Bengt E. Gustafson	June 5, 1971	Doctor of Science
John A. Hand	June 5, 1971	Doctor of Laws
John Edward Meyer	June 4, 1972	Doctor of Humanities
Virginia Baxley	June 4, 1972	Master of Arts
Clyde Guss Cox	August 27, 1972	Master of Arts
Joseph Smolian	August 27, 1972	Doctor of Humanities
Clarence A. Hanson	June 9, 1974	Doctor of Literature
Samuel Richardson Hill Jr.	June 9, 1975	Doctor of Science
Charles Alexander McCallum	June 9, 1975	Doctor of Science
Arthur Davis Shores	June 9, 1975	Doctor of Humanities
Robert Hugh Daniel	June 5, 1977	Doctor of Laws
William Paul Brann	June 5, 1977	Doctor of Laws
William Micajah Spencer Jr.	June 5, 1977	Doctor of Humanities
George W. Campbell	June 5, 1977	Doctor of Laws
Julia Walker Russell	June 5, 1977	Doctor of Humane Letters
Henry Poellnitz Johnston	June 4, 1978	Doctor of Humanities
George Mooar Rust	June 4, 1978	Doctor of Science
Hall Williams Thompson	June 4, 1978	Doctor of Laws
John W. Kirklin	June 4, 1978	Doctor of Science
Margaret Spain McDonald	June 4, 1978	Doctor of Humanities
Samuel Booth Barker	June 3, 1979	Doctor of Science
Emil Carl Hess	June 3, 1979	Doctor of Humanities
William Hansell Hulsey	June 3, 1979	Doctor of Humanities
Kenneth Rule Daniel	June 8, 1980	Doctor of Science
William James Rushton	June 8, 1980	Doctor of Laws
Frank Park Samford	June 8, 1980	Doctor of Laws
Emmett Bryan Carmichael	June 7, 1981	Doctor of Science
Frederick W. Conner	June 7, 1981	Doctor of Humanities
Robert M. Frank	June 7, 1981	Doctor of Science
John S. Jemison Jr.	June 7, 1981	Doctor of Laws
Howard Lamar Holley	June 6, 1982	Doctor of Science
A. Edward Maumenee	June 6, 1982	Doctor of Science
John S. Shaw Jr.	June 6, 1982	Doctor of Laws
Joseph McConnell Farley	June 5, 1983	Doctor of Laws
J. Garber Galbraith	June 5, 1983	Doctor of Science
Charles W. Ireland	June 5, 1983	Doctor of Laws
Fuller Earle Callaway Jr.	June 3, 1984	Doctor of Science
Thomas Kermit Hearn Jr.	June 3, 1984	Doctor of Humanities
James Coleman Lee Jr.	June 3, 1984	Doctor of Laws
James Allen Pittman Jr.	June 3, 1984	Doctor of Science
Leonard Robinson	June 3, 1984	Doctor of Science
Jack J. Dreyfus	June 2, 1985	Doctor of Laws
Frederick Chapman Robbins	June 2, 1985	Doctor of Laws
Henry C. Goodrich	June 8, 1986	Doctor of Laws
Jack Dobbs McSpadden	June 8, 1986	Doctor of Laws
William F. Edmonds	June 8, 1986	Doctor of Science
W. Houston Blount	June 7, 1987	Doctor of Laws
Crawford T. Johnson III	June 7, 1987	Doctor of Laws

\*Honorary degrees conferred prior to 1970 were conferred at the University of Alabama, Tuscaloosa.

## HONORARY UAB DEGREES CONFERRED (CONTINUED)

<u>Name</u>	<u>Date Conferred*</u>	<u>Degree</u>
Joseph S. Bruno	June 5, 1988	Doctor of Laws
Eugene C. Gwaltney	June 5, 1988	Doctor of Laws
Charles B. Webb Jr.	June 5, 1988	Doctor of Laws
Glenn Ireland II	June 4, 1989	Doctor of Laws
William M. Spencer III	June 4, 1989	Doctor of Laws
Clifton R. Wharton Jr.	June 4, 1989	Doctor of Humane Letters
Katharine Reynolds Ireland	June 3, 1990	Doctor of Humanities
Charles Caldwell Marks	June 3, 1990	Doctor of Laws
Louis J. Willie	June 3, 1990	Doctor of Laws
Wallace R. Bunn	June 2, 1991	Doctor of Laws
William R. Ireland	June 2, 1991	Doctor of Laws
Thomas E. Rast	June 2, 1991	Doctor of Laws
J. Claude Bennett	June 7, 1992	Doctor of Science
Virginia Van der Veer Hamilton	June 7, 1992	Doctor of Letters
Carolyn Reid-Wallace	June 7, 1992	Doctor of Humane Letters
Richard Arrington Jr.	June 6, 1993	Doctor of Science
Arnold G. Diethelm	June 6, 1993	Doctor of Science
John R. Durant	June 6, 1993	Doctor of Science
H. Brandt Ayers	June 5, 1994	Doctor of Humane Letters
George D. Lundberg	June 5, 1994	Doctor of Science
Wallace D. Malone Jr.	June 4, 1995	Doctor of Laws
James Rachels	June 4, 1995	Doctor of Humane Letters
Alys Robinson Stephens	June 4, 1995	Doctor of Humanities
Elmer B. Harris	June 2, 1996	Doctor of Laws
Stevie Wonder	June 2, 1996	Doctor of Music
John W. Woods	June 2, 1996	Doctor of Laws
Don Logan	June 8, 1997	Doctor of Humane Letters
Sam C. Pointer Jr.	June 8, 1997	Doctor of Laws
James H. Woodward	June 8, 1997	Doctor of Laws
Robert Luckie Jr.	December 7, 1997	Doctor of Humanities
John J. McMahon Jr.	June 7, 1998	Doctor of Laws
Eric F. Wieschaus	June 7, 1998	Doctor of Science
Lord Trevor Smith	December 6, 1998	Doctor of Humane Letters
Willie L. Brown Jr.	June 6, 1999	Doctor of Humane Letters
H. Corbin Day	June 6, 1999	Doctor of Humane Letters
David Baltimore	December 5, 1999	Doctor of Science
William J. McDonough	December 5, 1999	Doctor of Humane Letters
David Satcher	June 4, 2000	Doctor of Science
Peter A. Georgescu	December 3, 2000	Doctor of Humane Letters
W. Richard West	June 10, 2001	Doctor of Laws
Regina M. Benjamin	December 15, 2001	Doctor of Science
Marie S. Ingalls	May 4, 2002	Doctor of Humanities
Michael E. Stephens	May 4, 2002	Doctor of Humanities
Annette Nevin Shelby	May 10, 2003	Doctor of Humanities
Alice E. Pigman	December 13, 2003	Doctor of Humanities
Freeman A. Hrabowski III	December 17, 2005	Doctor of Humanities
Jarman F. Lowder	December 16, 2006	Doctor of Humanities
Thomas H. Lowder	December 16, 2006	Doctor of Humanities
Herman D. Bolden	May 3, 2008	Doctor of Humanities
Caroline Patterson Ireland	December 13, 2008	Doctor of Humanities
Charles A. Collat Sr.	May 9, 2009	Doctor of Humanities
Marvin Randolph Engel	May 8, 2010	Doctor of Humanities
Harold L. Abroms	May 8, 2010	Doctor of Humanities
Malcolm Portera	May 12, 2012	Doctor of Humanities

\*Honorary degrees conferred prior to 1970 were conferred at the University of Alabama, Tuscaloosa.

## **PRESIDENT'S MEDAL**

1985 - J. Durwood Bradley, M.D.  
1986 - B. Gene Bartow, Janet Redman Hill  
1987 - Peter Garthwaite Smith  
1988 - Max D. Cooper, M.D.  
1989 - James Hatcher  
1990 - Fred W. Sington  
1991 - Samuel Booth Barker, Ph.D.  
1992 - Juan M. Navia, Ph.D.  
1993 - Albert F. LoBuglio, M.D.  
1994 - Aaron L. Lamar Jr., Ed.D.  
1995 - George N. Mickwee  
1996 - William A. Sibley, Ph.D.  
1997 - Linda Flaherty-Goldsmith  
1998 - Odessa Woolfolk  
1999 - James A. Garland  
2000 - Albert D. Pacifico, M.D.  
2001 - John N. Whitaker, M.D. (posthumously)  
2002 - Ada W. Long, Ph.D.  
2003 - Julian W. Banton, Michael Goodrich, Margaret M. Porter  
2004 - William J. Koopman, M.D.  
2005 - Rachel Z. Booth, Ph.D., John M. Lyons, Ph.D.  
2006 - Virginia D. Gauld, Ph.D., Ina Branham Leonard, J.D.  
2007 - Richard J. Whitley, M.D.  
2008 - Basil I. Hirschowitz, M.D.  
2009 - Malcolm Portera, Ph.D.  
2010 - Michael S. Saag, M.D.  
2011 - George Howard, Dr.P.H.  
2012 - Louise T. Chow, Ph.D.  
2012 - John J. McMahon, Jr.

## **DISTINGUISHED ALUMNI AWARD**

1991 - Lawrence J. DeLucas, O.D., Ph.D.  
1992 - Richard M. Scrushy  
1993 - Helene Griffin Robertson  
1994 - William L. Roper, M.D., M.P.H.  
1995 - James H. Woodward, Ph.D.  
1996 - Kenneth L. Jackson  
1997 - Charles A. McCallum, D.M.D., M.D.  
1998 - Martha Warren Bidez, Ph.D.  
1999 - Jean A. Jacobs Kelley, Ed.D.  
2000 - Robert C. Chapman  
2001 - Tommie G. Cummings  
2002 - Michael E. Stephens  
2003 - Gail H. Cassell, Ph.D.  
2004 - Marie L. O'Koren, Ed.D.  
2005 - Mary Lynne Capilouto, D.M.D.  
2006 - Albert J. Tully Jr., M.D.  
2007 - Ray L. Watts, M.D.  
2008 - Julie H. Hanna  
2009 - Linda C. Lucas, Ph.D.  
2010 - Marquita Davis, Ph.D.  
2011 - Ann Harper Arrasmith  
2012 - Phyllis Norton DePiano

## UAB PROGRAM ACCREDITATION

<b><u>Programs Eligible for Accreditation</u></b>	<b><u>Year Program Started</u></b>	<b><u>Most Recent Accreditation</u></b>	<b><u>Accreditation Agency</u></b>
UAB	1969	2005	Southern Association of Colleges and Schools
GRADUATE SCHOOL	1970 (as UAB)		Member of Council of Graduate Schools in the United States
COLLEGE OF ARTS AND SCIENCES			
Art	1972	2008	National Association of Schools of Art and Design
Chemistry	1969	2005	American Chemical Society
Computer and Information Sciences (B.S.)	1980	2005	Computing Accreditation Commission of ABET
Forensic Sciences (M.S.)	1981	2009	Forensic Science Education Program Accreditation Commission (FEPAC)
Medical Psychology	1980	2007	American Psychological Association
Music	1982	2006	National Association of Schools of Music
Public Administration (M.P.A.)	1978	2009	National Association of Schools of Public Affairs and Administration
Social Work	1976	2007	Council on Social Work Education
Theatre	1973	2009	National Association of Schools of Theatre
SCHOOL OF BUSINESS	1969	2012	Association to Advance Collegiate Schools of Business-International
Accounting			Association to Advance Collegiate Schools of Business-International
Baccalaureate Level	1969	2012	
Master's Level	1982	2012	
SCHOOL OF DENTISTRY	1948	2007	American Dental Association, Commission on Dental Accreditation
All Specialty Programs:		2007	American Dental Association, Commission on Dental Accreditation
Endodontics	1956	2007	
Maxillofacial Prosthodontics	1973	2007	
Oral and Maxillofacial Surgery	1949	2009	
Orthodontics	1952	2007	
Pediatric Dentistry	1951	2007	
Periodontics	1956	2007	
Prosthodontics	1955	2007	
General Practice Residency	1977	2007	American Dental Association, Commission on Dental Accreditation
Advanced Education in General Dentistry	1990	2007	American Dental Association, Commission on Dental Accreditation

## UAB PROGRAM ACCREDITATION (CONTINUED)

<u>Programs Eligible for Accreditation</u>	<u>Year Program Started</u>	<u>Most Recent Accreditation</u>	<u>Accreditation Agency</u>
SCHOOL OF EDUCATION	1969	2005	National Council for Accreditation of Teacher Education
		2005	Alabama State Board of Education Approval
Art Education	1972	2008	National Association of Schools of Art and Design
Music Education	1984	2006	National Association of Schools of Music
Counseling (Community and School)	1970	2010	Council for Accreditation of Counseling and Related Educational Programs (CACREP)
SCHOOL OF ENGINEERING			
Baccalaureate Level	1969	2007	Engineering Accreditation Commission of ABET
SCHOOL OF HEALTH PROFESSIONS			
<u>Clinical and Diagnostic Sciences Department</u>			
Cytotechnology	1963	2012	Cytotechnology Programs Review Committee, American Society of Cytopathology, Commission on Accreditation of Allied Health Education Programs of the American Medical Association (CAAHEP)
Genetic Counseling	2009	2013	American Board of Genetic Counseling
Medical Technology/Clinical Laboratory Science	1945	2008	National Accrediting Agency for Clinical Laboratory Sciences
Nuclear Medicine Technology	1969	2010	Joint Review Committee on Educational Programs in NMT, Department of Education
Physician Assistant Studies	1967	2009	Accreditation Review Commission on Education for the Physician Assistant
Respiratory Therapist	1973	2011	Committee on Accreditation for Respiratory Care
<u>Health Services Administration Department</u>			
Health Administration	1965	2009	Commission on Accreditation of Healthcare Management Education (CAHME)
Health Information Management Baccalaureate Level	1972	2012	Commission on Accreditation for Health Informatics and Information Management Education, CAAHEP
<u>Nutrition Sciences Department</u>			
Dietetic Internship	1963	2008	Accrediting Council for Education in Nutrition and Dietetics (ACEND)
<u>Occupational Therapy Department</u>			
Occupational Therapy	1968	2005	Accreditation Council for Occupational Therapy Education, CAAHEP
<u>Physical Therapy Department</u>			
Physical Therapy	1975	2010	Commission on Accreditation in Physical Therapy Education

## UAB PROGRAM ACCREDITATION (CONTINUED)

<u>Programs Eligible for Accreditation</u>	<u>Year Program Started</u>	<u>Most Recent Accreditation</u>	<u>Accreditation Agency</u>
UNIVERSITY OF ALABAMA SCHOOL OF MEDICINE	1945	2006	Liaison Committee on Medical Education
Including:			
School of Medicine - Birmingham			
School of Primary Medical Care - Huntsville			
College of Community Health Sciences - Tuscaloosa			
Division of Continuing Medical Education		2013	Accreditation Council for Continuing Medical Education
UAB University Hospital		2012	Joint Commission on Accreditation of Healthcare Organizations
		2012	Accreditation Council on Graduate Medical Education (ACGME)
SCHOOL OF NURSING	1950	2010	Commission on Collegiate Nursing Education
Nurse Anesthesia	1946	2010	Council on Accreditation of Nurse Anesthesia Educational Programs
SCHOOL OF OPTOMETRY			
Professional Program (O.D.)	1969	2009	Accreditation Council on Optometric Education
Residency programs:			Accreditation Council on Optometric Education
Cornea and Contact Lenses	1980	2009	
Family Practice Optometry	1978	2011	
Geriatric Optometry and Low Vision			
Rehabilitation-Birmingham VA	1982	2012	
Primary Eye Care-Tuscaloosa VA	1979	2011	
Ocular Disease			
Georgia	1983	2007	
Vision America		2010	
Pediatric Optometry	1986	2007	
SCHOOL OF PUBLIC HEALTH		2009	Council on Education for Public Health
M.P.H. Program	1966		
M.S.P.H. Program	1979		
Dr.P.H. Program	1979		
Ph.D. Program	1985		

## UAB PROGRAM ACCREDITATION (CONTINUED)

### RESIDENCY AND SUBSPECIALTY TRAINING PROGRAMS AT UAB HOSPITAL ACCREDITED BY ACCREDITATION COUNCIL ON GRADUATE MEDICAL EDUCATION (as of January 2013)

<u>Department</u>	<u>Residency Program</u>	<u>Subspecialty Program</u>	<u>Most Recent Accreditation</u>
Anesthesiology	Anesthesiology		2010
		Critical Care Anesthesiology	2010
		Pain Management	2010
		Adult Cardiothoracic Anesthesiology	2010
Dermatology	Dermatology		2012
	Dermatology/Pathology	Dermatopathology	2011
	Procedural Dermatology	Procedural Dermatology	2012
Emergency Medicine	Emergency Medicine		2010
Genetics	Medical Genetics		2012
Medicine	Internal Medicine		2006
		Allergy and Immunology	2009
		Cardiovascular Disease	2006
		Clinical Cardiac Electrophysiology	2006
		Interventional Cardiology	2006
		Endocrinology, Diabetes, & Metabolism	2006
		Gastroenterology	2008
		Geriatric Medicine	2006
		Hematology/Oncology	2008
		Hospice and Palliative Care Medicine	2011
		Infectious Diseases	2006
		Nephrology	2006
		Pulmonary Disease/Critical Care Medicine	2006
		Rheumatology	2008
Neurology	Neurology		2009
		Child Neurology	2009
		Clinical Neurophysiology	2011
		Neuromuscular Medicine	2012
		Vascular Neurology	2010
Obstetrics & Gynecology	Obstetrics & Gynecology		2007
Ophthalmology	Ophthalmology		2011
Pathology	Pathology		2008
		Blood Banking/Transfusion Medicine	2012
		Cytopathology	2008
		Forensic Pathology	2012
		Hematopathology	2010
		Molecular Genetic Pathology	2007
		Neuropathology	2010
Pediatrics	Pediatrics		2011
		Adolescent Medicine	2012

## UAB PROGRAM ACCREDITATION (CONTINUED)

### RESIDENCY AND SUBSPECIALTY TRAINING PROGRAMS AT UAB HOSPITAL ACCREDITED BY ACCREDITATION COUNCIL ON GRADUATE MEDICAL EDUCATION (as of January 2013)

<u>Department</u>	<u>Residency Program</u>	<u>Subspecialty Program</u>	<u>Most Recent Accreditation</u>
Pediatrics (continued)		Neonatal/Perinatal Medicine	2012
		Pediatric Critical Care Medicine	2012
		Pediatric Emergency Medicine	2012
		Pediatric Endocrinology	2009
		Pediatric Gastroenterology	2011
		Pediatric Hematology/Oncology	2012
		Pediatric Infectious Diseases	2011
		Pediatric Nephrology	2011
		Pediatric Pulmonology	2012
		Sleep Medicine	2011
		Medicine/Pediatrics	2011
Rehabilitation	Physical Medicine & Rehabilitation		2008
		Pediatric Physical Medicine & Rehabilitation	2008
Psychiatry	Psychiatry		2012
		Child & Adolescent Psychiatry	2012
		Geriatric Psychiatry	2008
Radiation Oncology	Radiation Oncology		2008
Radiology	Diagnostic Radiology		2008
		Neuroradiology	2012
		Vascular/Interventional Radiology	2008
		Nuclear Medicine	2006
Surgery	General Surgery		2011
		Pediatric Surgery	2012
		Plastic Surgery	2007
		Surgical Critical Care	2012
		Thoracic & Cardiovascular Surgery	2012
		Vascular Surgery - Fellowship	2009
		Vascular Surgery - Integrated	2012
		Neurosurgery	2008
		Orthopaedic Surgery	2009
		Hand Surgery	2008
		Otolaryngology	2009
		Urology	2010
OTHER CAMPUSES			
	Family Practice (Huntsville)		2011
	Family Practice (Selma)		2010
	Internal Medicine (Huntsville)		2012
	Internal Medicine (Montgomery)		2011
	Sports Medicine (Tuscaloosa)		2008



## UAB HOSPITAL STATISTICAL HIGHLIGHTS

<b>Discharges by Patient Origin<sup>1,2</sup></b>	<b>2010-11</b>	<b>Percent of Total</b>	<b>2011-12</b>	<b>Percent of Total</b>
Jefferson County	21,567	45.5%	22,364	46.5%
Other Alabama Counties	22,689	47.9%	22,733	47.3%
Out-of-State	3,127	6.6%	2,993	6.2%

<b>Patient Information<sup>1,2</sup></b>	<b>2010-11</b>	<b>2011-12</b>
Discharges <sup>1,2</sup>	47,383	48,090
Babies Delivered	3,994	3,979
Total Inpatient Days of Care (Discharge Days) <sup>1,2</sup>	304,257	317,534
Emergency Department Visits	78,225	83,467
Daily Average Number of Patients <sup>1,2</sup>	834	868
Average Length of Patient Stay <sup>1,2</sup>	6.42	6.60
Average Percentage of Occupancy <sup>1,2</sup>	72.05%	74.99%
Average Beds in Service <sup>3</sup>	1,157	1,157
Beds in Service, End-of-Year	1,157	1,157

### **Financial Information**

Salaries and Benefits	\$501,651,000	\$526,609,000
Total Expenses <sup>4</sup>	\$1,239,852,000	\$1,355,499,000
Average Daily Expenses	\$3,397,000	\$3,704,000

<sup>1</sup> Excludes normal newborns (newborns who are discharged with the mother).

<sup>2</sup> Includes 3,672 cases and 4989 days in FY 2011, and 4,386 cases and 6,125 days in FY 2012, for outpatients with lengths of stay of 24 hours or greater.

<sup>3</sup> The UAB Hospital is currently licensed for 1,157 beds.

<sup>4</sup> Includes transfers for depreciation and interest.

# UAB LIBRARY STATISTICS FALL 2012

	<u>Mervyn H. Sterne Library</u>	<u>Lister Hill Library of the Health Sciences<sup>1</sup></u>	<u>Total</u>
Volumes	1,695,520 <sup>2</sup>	336,604	2,032,124
Titles	112,007 <sup>2</sup>	405,713	517,720
Current Periodical Subscriptions	(see total column)	(see total column)	35,044 <sup>3</sup>
Archival Collections			
University Records Series	NA	251	251
Manuscript Collections	NA	166	166
Digital Collections			
Number of collections	22	NA	22
Size	90GB	NA	90GB
Number of Items	14,393	NA	14,393
Employees (Full-time Equivalents)			
Professional	17.0	19.0	36.0
Technical/Clerical	36.0	24.8	60.8
Student Assistants	2.0	0.3	2.3
Total Employees	55.0	44.0	99.0
Total Library Operating Expenditures <sup>4</sup>	\$5,573,905	\$4,557,328	\$10,131,233
Library Physical Facilities			
Net Assignable Area (square feet)	142,517	87,567	230,084
Shelving Capacity (linear feet)	152,758 <sup>5</sup>	71,834 <sup>6</sup>	224,592
Seating Capacity	1,167 <sup>7</sup>	577	1,744
Total Hours Open per Week	106.5 (7-day period)	94.5 (7-day period)	(see Library columns)
Classification System	Library of Congress	National Library of Medicine; Library of Congress (nonmedical)	(see Library columns)

<sup>1</sup> Includes Reynolds Historical Library and the UAB Archives.

<sup>2</sup> As of April 30, 2012.

<sup>3</sup> This number represents total access to online full text and print periodical resources available to UAB students, faculty, and staff.

<sup>4</sup> As of September 30, 2012.

<sup>5</sup> Includes Annex collection closed stacks located in Education Building Room 238.

<sup>6</sup> Includes shelving at West Pavilion Library (LHL satellite) at UAB University Hospital.

<sup>7</sup> Seating capacity does not include seminar/conference rooms and special collections of 184 seats.

## **UAB ATHLETICS**

The University of Alabama at Birmingham initiated an intercollegiate varsity athletic program in 1978. UAB now participates as a Division I member of the NCAA. Through the 1990-91 season, UAB was a member of the Sun Belt Conference. In 1991, UAB became a charter member of the Great Midwest Conference. In 1995, UAB joined the newly created Conference USA. The Blazers became a football member of Conference USA in the 1999 season.

### **Director of Athletics**

Brian Mackin

#### **Men's Programs**

Baseball  
Basketball  
Football  
Golf  
Soccer  
Tennis

#### **Head Coach**

Brian Shoop  
Jerod Haase  
Garrick McGee  
Alan Kaufman  
Mike Getman  
Derek Tarr

#### **Women's Programs**

Basketball  
Bowling  
Track & Field/Cross-Country  
Golf  
Rifle  
Sand Volleyball  
Soccer  
Softball  
Tennis  
Volleyball

#### **Head Coach**

Randy Norton  
Michelle Crews  
Kurt Thomas  
Kim Wilcox  
Lori Goodwin  
Hal Messersmith  
Harold Warren  
Marla Townsend  
Lisa Jackson  
Kerry Messersmith

Source: UAB Athletics Sports Information

# **STUDENT INFORMATION**

**UAB FALL SEMESTER 2012 ENROLLMENT  
BY SCHOOL AND LEVEL**

<b>ACADEMIC UNIT</b>	<b>Under-Graduate</b>	<b>Masters/Post-Masters/Cert./Non-Degree</b>	<b>Doctoral-Research/Scholarship<sup>1</sup></b>	<b>Doctoral-Professional Practice<sup>1</sup></b>	<b>Doctoral-Other<sup>1</sup></b>	<b>Total For Reporting<sup>2</sup></b>	<b>Adv. Prof.</b>	<b>Total</b>
Arts and Sciences	6,603	376	252			7,231	10	7,241
Business	1,812	365				2,177		2,177
Dentistry	21	1		231		253	97	350
Education	929	663	61	24		1,677		1,677
Engineering	918	298	109			1,325	1	1,326
Health Professions	474	598	56	119	39	1,286	9	1,295
Joint Health Sciences		1	380			381	91	472
Medicine				639		639	1,043	1,682
Nursing	534	1,421	52	157		2,164		2,164
Optometry			25	175		200	15	215
Public Health		272	88	23		383	18	401
Unclassified <sup>3</sup>		283				283		283
<b>TOTAL</b>	<b>11,291</b>	<b>4,278</b>	<b>1,023</b>	<b>1,368</b>	<b>39</b>	<b>17,999</b>	<b>1,284</b>	<b>19,283</b>
<b>Graduate Total (Excluding D.M.D., M.D., and O.D.)</b>			<b>5,663</b>					
<b>D.M.D., M.D, and O.D. Total</b>			<b>1,045</b>					

<sup>1</sup>Starting in fall 2010, the U.S. Department of Education divided the classification of doctoral degrees into the following categories:

Doctor's degree - research/scholarship - A Ph.D. or other doctor's degree that requires advanced work beyond the master's level, including the preparation and defense of a dissertation based on original research, or the planning and execution of an original project demonstrating substantial artistic or scholarly achievement. At UAB, this category includes the Ph.D.

Doctor's degree - professional practice - A doctor's degree that is conferred upon completion of a program providing the knowledge and skills for the recognition, credential, or license required for professional practice. The degree is awarded after a period of study such that the total time to the degree, including both pre-professional and professional preparation, equals at least six full-time equivalent academic years. Some of these degrees were formerly classified as "first professional." At UAB, this category includes the following degrees: D.M.D., D.N.P., D.P.T., Dr.P.H., D.Sc.P.T., Ed.D., M.D., O.D.

Doctor's degree - other - A doctor's degree that does not meet the definition of a doctor's degree - research/scholarship or a doctor's degree - professional practice. At UAB, this category includes the D.Sc.

<sup>2</sup>This total is reported to state and federal agencies and is included in documents such as surveys and questionnaires.

<sup>3</sup>Unclassified includes nondegree graduate students.

Note:

This enrollment count is as of the end of the drop/add period, August 22, 2012. All counts are for students enrolled in credit courses. Excluded from the count are students who are only auditing courses and persons taking only continuing education or other noncredit courses.

Advanced Professionals are interns, residents, and postdoctoral fellows who are at UAB to participate in specialized training beyond their academic or professional degrees. For the Schools of Dentistry, Medicine, and Optometry, figures are obtained directly from those schools. The source of the data for Arts and Sciences, Engineering, Health Professions, Joint Health Sciences, and Public Health is the Office of Postdoctoral Education.

Source: UAB Headcount Enrollment Report, Fall Semester 2012

**UAB FALL SEMESTER 2012 ENROLLMENT  
FULL-TIME AND PART-TIME BY RACE AND GENDER**

	Non-Resident Alien		Hispanic/ Latino		American Indian/ Alaska Native		ASIAN		Black African American		Native Hawaiian/ Pac. Island.		White		Two or more Races		Unknown		Total		Total
	Male	Female	Male	Female	Male	Female	Male	Female	Male	Female	Male	Female	Male	Female	Male	Female	Male	Female	Male	Female	
<b>Full-time Students</b>																					
Undergraduates	102	62	88	115	10	14	213	231	690	1,412	4	3	2,262	2,669	91	169	71	64	3,531	4,739	8,270
Graduates	200	114	19	42	2	2	30	59	65	237	2	1	643	1,147	22	22	15	28	998	1,652	2,650
D.M.D., M.D., O.D.	4	3	8	9	3	1	51	85	17	37	0	0	435	343	9	13	16	11	543	502	1,045
<b>Total Full-time</b>	306	179	115	166	15	17	294	375	772	1,686	6	4	3,340	4,159	122	204	102	103	5,072	6,893	11,965
<b>Part-time Students</b>																					
Undergraduates	14	20	24	49	3	2	45	49	247	614	1	1	825	943	22	46	54	62	1,235	1,786	3,021
Graduates	40	37	26	58	1	6	34	43	118	425	0	3	613	1,539	14	38	10	8	856	2,157	3,013
D.M.D., M.D., O.D.	0	0	0	0	0	0	0	0	0	0	0	0	0	0	0	0	0	0	0	0	0
<b>Total Part-time</b>	54	57	50	107	4	8	79	92	365	1,039	1	4	1,438	2,482	36	84	64	70	2,091	3,943	6,034
<b>Total Full-time and Part-time Students</b>																					
Undergraduates	116	82	112	164	13	16	258	280	937	2,026	5	4	3,087	3,612	113	215	125	126	4,766	6,525	11,291
Graduates	240	151	45	100	3	8	64	102	183	662	2	4	1,256	2,686	36	60	25	36	1,854	3,809	5,663
D.M.D., M.D., O.D.	4	3	8	9	3	1	51	85	17	37	0	0	435	343	9	13	16	11	543	502	1,045
<b>Grand Total</b>	360	236	165	273	19	25	373	467	1,137	2,725	7	8	4,778	6,641	158	288	166	173	7,163	10,836	17,999

Note: Figures do not include 1,284 full-time advanced professionals.

Source: Institutional Effectiveness & Analysis, Fall 2012 Enrollment by Race and Gender Report

### UAB FALL ENROLLMENT BY RACE AND LEVEL 2007-2012\*

<b>UNDERGRADUATE</b>	<b>Fall 2007</b>	<b>% of Total</b>	<b>Fall 2008</b>	<b>% of Total</b>	<b>Fall 2009</b>	<b>% of Total</b>	<b>Fall 2010</b>	<b>% of Total</b>	<b>Fall 2011</b>	<b>% of Total</b>	<b>Fall 2012</b>	<b>% of Total</b>
Non-resident Alien	246	2.3%	240	2.3%	241	2.3%	209	1.9%	188	1.7%	198	1.8%
Hispanic/Latino	156	1.4%	177	1.7%	196	1.8%	220	2.0%	243	2.2%	276	2.4%
American Indian/Alaskan Native	33	0.3%	42	0.4%	50	0.5%	35	0.3%	31	0.3%	29	0.3%
Asian	459	4.3%	457	4.4%	452	4.2%	455	4.1%	501	4.5%	538	4.8%
Black or African American	3,120	28.9%	2,807	27.1%	2,746	25.8%	2,905	26.3%	2,949	26.5%	2,963	26.2%
Native Hawaiian/Pac. Islander	-	-	-	-	-	-	8	0.1%	7	0.1%	9	0.1%
White	6,435	59.6%	6,252	60.3%	6,487	60.9%	6,682	60.6%	6,654	59.8%	6,699	59.3%
Other/Multicultural	67	0.6%	149	1.4%	219	2.1%	-	-	-	-	-	-
Two or More Races	-	-	-	-	-	-	129	1.2%	242	2.2%	328	2.9%
Race/Ethnicity Unknown	280	2.6%	245	2.4%	255	2.4%	385	3.5%	313	2.8%	251	2.2%
<b>Total</b>	<b>10,796</b>	<b>100.0%</b>	<b>10,369</b>	<b>100.0%</b>	<b>10,646</b>	<b>100.0%</b>	<b>11,028</b>	<b>100.0%</b>	<b>11,128</b>	<b>100.0%</b>	<b>11,291</b>	<b>100.0%</b>
<b>GRADUATE</b>	<b>Fall 2007</b>	<b>% of Total</b>	<b>Fall 2008</b>	<b>% of Total</b>	<b>Fall 2009</b>	<b>% of Total</b>	<b>Fall 2010</b>	<b>% of Total</b>	<b>Fall 2011</b>	<b>% of Total</b>	<b>Fall 2012</b>	<b>% of Total</b>
Non-resident Alien	595	13.4%	534	11.2%	490	9.4%	410	7.5%	378	7.0%	391	6.9%
Hispanic/Latino	61	1.4%	74	1.6%	81	1.6%	104	1.9%	112	2.1%	145	2.6%
American Indian/Alaskan Native	18	0.4%	19	0.4%	20	0.4%	15	0.3%	16	0.3%	11	0.2%
Asian	141	3.2%	161	3.4%	184	3.5%	181	3.3%	165	3.1%	166	2.9%
Black or African American	647	14.5%	682	14.3%	720	13.9%	790	14.4%	777	14.4%	845	14.9%
Native Hawaiian/Pac. Islander	-	-	-	-	-	-	0	0.0%	4	0.1%	6	0.1%
White	2,883	64.8%	3,127	65.8%	3,538	68.1%	3,824	69.7%	3,785	70.1%	3,942	69.6%
Other/Multicultural	7	0.2%	19	0.4%	38	0.7%	-	-	-	-	-	-
Two or More Races	-	-	-	-	-	-	42	0.8%	65	1.2%	96	1.7%
Race/Ethnicity Unknown	97	2.2%	139	2.9%	122	2.3%	117	2.1%	100	1.9%	61	1.1%
<b>Total</b>	<b>4,449</b>	<b>100.0%</b>	<b>4,755</b>	<b>100.0%</b>	<b>5,193</b>	<b>100.0%</b>	<b>5,483</b>	<b>100.0%</b>	<b>5,402</b>	<b>100.0%</b>	<b>5,663</b>	<b>100.0%</b>
<b>D.M.D., M.D., and O.D.</b>	<b>Fall 2007</b>	<b>% of Total</b>	<b>Fall 2008</b>	<b>% of Total</b>	<b>Fall 2009</b>	<b>% of Total</b>	<b>Fall 2010</b>	<b>% of Total</b>	<b>Fall 2011</b>	<b>% of Total</b>	<b>Fall 2012</b>	<b>% of Total</b>
Non-resident Alien	2	0.2%	3	0.3%	5	0.5%	8	0.8%	9	0.9%	7	0.7%
Hispanic/Latino	8	0.8%	8	0.8%	9	0.9%	15	1.5%	21	2.0%	17	1.6%
American Indian/Alaskan Native	10	1.0%	10	1.0%	9	0.9%	6	0.6%	6	0.6%	4	0.4%
Asian	107	10.7%	112	10.9%	119	11.5%	124	12.0%	129	12.3%	136	13.0%
Black or African American	64	6.4%	66	6.4%	61	5.9%	61	5.9%	63	6.0%	54	5.2%
Native Hawaiian/Pac. Islander	-	-	-	-	-	-	0	0.0%	0	0.0%	0	0.0%
White	770	76.9%	779	76.0%	779	75.3%	775	75.1%	777	74.4%	778	74.4%
Other/Multicultural	23	2.3%	22	2.1%	25	2.4%	-	-	-	-	-	-
Two or More Races	-	-	-	-	-	-	4	0.4%	19	1.8%	22	2.1%
Race/Ethnicity Unknown	17	1.7%	25	2.4%	28	2.7%	39	3.8%	21	2.0%	27	2.6%
<b>Total</b>	<b>1,001</b>	<b>100.0%</b>	<b>1,025</b>	<b>100.0%</b>	<b>1,035</b>	<b>100.0%</b>	<b>1,032</b>	<b>100.0%</b>	<b>1,045</b>	<b>100.0%</b>	<b>1,045</b>	<b>100.0%</b>
<b>UAB TOTAL</b>	<b>Fall 2007</b>	<b>% of Total</b>	<b>Fall 2008</b>	<b>% of Total</b>	<b>Fall 2009</b>	<b>% of Total</b>	<b>Fall 2010</b>	<b>% of Total</b>	<b>Fall 2011</b>	<b>% of Total</b>	<b>Fall 2012</b>	<b>% of Total</b>
Non-resident Alien	843	5.2%	777	4.8%	736	4.4%	627	3.6%	575	3.3%	596	3.3%
Hispanic/Latino	225	1.4%	259	1.6%	286	1.7%	339	1.9%	376	2.1%	438	2.4%
American Indian/Alaskan Native	61	0.4%	71	0.4%	79	0.5%	56	0.3%	53	0.3%	44	0.2%
Asian	707	4.4%	730	4.5%	755	4.5%	760	4.3%	795	4.5%	840	4.7%
Black or African American	3,831	23.6%	3,555	22.0%	3,527	20.9%	3,756	21.4%	3,789	21.6%	3,862	21.5%
Native Hawaiian/Pac. Islander	-	-	-	-	-	-	8	0.0%	11	0.1%	15	0.1%
White	10,088	62.1%	10,158	62.9%	10,804	64.0%	11,281	64.3%	11,216	63.8%	11,419	63.4%
Other/Multicultural	97	0.6%	190	1.2%	282	1.7%	-	-	-	-	-	-
Two or More Races	-	-	-	-	-	-	175	1.0%	326	1.9%	446	2.5%
Race/Ethnicity Unknown	394	2.4%	409	2.5%	405	2.4%	541	3.1%	434	2.5%	339	1.9%
<b>Total</b>	<b>16,246</b>	<b>100.0%</b>	<b>16,149</b>	<b>100.0%</b>	<b>16,874</b>	<b>100.0%</b>	<b>17,543</b>	<b>100.0%</b>	<b>17,575</b>	<b>100.0%</b>	<b>17,999</b>	<b>100.0%</b>

\*Totals do not include advanced professionals.

Note: Beginning fall 2010 this report reflects aggregate categories IPEDS adopted for reporting race/ethnicity data in accordance with guidelines issued by the U.S. Department of Education.

Source: Institutional Effectiveness & Analysis

**UAB**  
**TOTAL STUDENT DEMOGRAPHICS\***  
**FALL 2012**

		<u>Full-time</u>		<u>Part-time</u>		<u>Total</u>	
		<u>Number</u>	<u>Percent</u>	<u>Number</u>	<u>Percent</u>	<u>Number</u>	<u>Percent</u>
<b>Total</b>		11,965	66.5%	6,034	33.5%	17,999	100.0%
<b>Gender</b>	Female	6,893	38.3%	3,943	21.9%	10,836	60.2%
	Male	5,072	28.2%	2,091	11.6%	7,163	39.8%
<b>Race</b>	Non-Resident Alien	485	2.7%	111	0.6%	596	3.3%
	Hispanic/Latino	281	1.6%	157	0.9%	438	2.4%
	American Indian or Alaskan Native	32	0.2%	12	0.1%	44	0.2%
	Asian	669	3.7%	171	1.0%	840	4.7%
	Black or African American	2,458	13.7%	1,404	7.8%	3,862	21.5%
	Hawaiian or Pacific Islander	10	0.1%	5	0.0%	15	0.1%
	White	7,499	41.7%	3,920	21.8%	11,419	63.4%
	Two or More Races	326	1.8%	120	0.7%	446	2.5%
	Unknown	205	1.1%	134	0.7%	339	1.9%
<b>Class</b>	Freshman	2,261	12.6%	119	0.7%	2,380	13.2%
	Sophomore	1,735	9.6%	371	2.1%	2,106	11.7%
	Junior	1,812	10.1%	624	3.5%	2,436	13.5%
	Senior	2,237	12.4%	1,165	6.5%	3,402	18.9%
	Post Baccalaureate Degree Seeking	179	1.0%	511	2.8%	690	3.8%
	Post Baccalaureate Non-Degree	15	0.1%	144	0.8%	159	0.9%
	Other Undergraduate	31	0.2%	87	0.5%	118	0.7%
	Graduate Certificate	19	0.1%	37	0.2%	56	0.3%
	Master's	1,630	9.1%	2,150	11.9%	3,780	21.0%
	Post Masters	3	0.0%	85	0.5%	88	0.5%
	Doctoral (excl. D.M.D., M.D., O.D.)	974	5.4%	411	2.3%	1,385	7.7%
	Non-Degree Graduate	24	0.1%	330	1.8%	354	2.0%
	D.M.D., M.D., O.D.	1,045	5.8%	0	0.0%	1,045	5.8%
<b>Age</b>	Under 19	1,646	9.1%	32	0.2%	1,678	9.3%
	19-21	4,193	23.3%	423	2.4%	4,616	25.6%
	22-25	3,483	19.4%	1,412	7.8%	4,895	27.2%
	26-30	1,548	8.6%	1,392	7.7%	2,940	16.3%
	31-35	516	2.9%	880	4.9%	1,396	7.8%
	Over 35	579	3.2%	1,895	10.5%	2,474	13.7%
	Unknown	0	0.0%	0	0.0%	0	0.0%
	Average Age	23.3		32.3		26.3	
<b>Source</b>	Jefferson County	4,148	23.0%	2,824	15.7%	6,972	38.7%
	Other Metro Area Counties**	1,720	9.6%	942	5.2%	2,662	14.8%
	Other Alabama Counties	3,904	21.7%	1,204	6.7%	5,108	28.4%
	Other States	1,705	9.5%	951	5.3%	2,656	14.8%
	Other Countries	485	2.7%	111	0.6%	596	3.3%
	Unknown	3	0.0%	2	0.0%	5	0.0%
<b>College/School</b>	Arts and Sciences	5,405	30.0%	1,826	10.1%	7,231	40.2%
	Business	1,309	7.3%	868	4.8%	2,177	12.1%
	Dentistry	252	1.4%	1	0.0%	253	1.4%
	Education	956	5.3%	721	4.0%	1,677	9.3%
	Engineering	855	4.8%	470	2.6%	1,325	7.4%
	Health Professions	1,009	5.6%	277	1.5%	1,286	7.1%
	Joint Health Sciences	368	2.0%	13	0.1%	381	2.1%
	Medicine	639	3.6%	0	0.0%	639	3.6%
	Nursing	676	3.8%	1,488	8.3%	2,164	12.0%
	Optometry	199	1.1%	1	0.0%	200	1.1%
	Public Health	276	1.5%	107	0.6%	383	2.1%
	Unclassified	21	0.1%	262	1.5%	283	1.6%

\*Does not include 1,284 full-time advanced professionals.

\*\*Blount, Shelby, St. Clair, and Walker counties

Source: Institutional Effectiveness and Analysis



**UAB**  
**UNDERGRADUATE STUDENT DEMOGRAPHICS**  
**FALL 2012**

		<u>Full-time</u>		<u>Part-time</u>		<u>Total</u>	
		<u>Number</u>	<u>Percent</u>	<u>Number</u>	<u>Percent</u>	<u>Number</u>	<u>Percent</u>
<b>Total</b>		8,270	73.2%	3,021	26.8%	11,291	100.0%
<b>Gender</b>	Female	4,739	42.0%	1,786	15.8%	6,525	57.8%
	Male	3,531	31.3%	1,235	10.9%	4,766	42.2%
<b>Race</b>	Non-Resident Alien	164	1.5%	34	0.3%	198	1.8%
	Hispanic/Latino	203	1.8%	73	0.6%	276	2.4%
	American Indian or Alaskan Native	24	0.2%	5	0.0%	29	0.3%
	Asian	444	3.9%	94	0.8%	538	4.8%
	Black or African American	2,102	18.6%	861	7.6%	2,963	26.2%
	Hawaiian or Pacific Islander	7	0.1%	2	0.0%	9	0.1%
	White	4,931	43.7%	1,768	15.7%	6,699	59.3%
	Two or More Races	260	2.3%	68	0.6%	328	2.9%
	Unknown	135	1.2%	116	1.0%	251	2.2%
<b>Class</b>	Freshman	2,261	20.0%	119	1.1%	2,380	21.1%
	Sophomore	1,735	15.4%	371	3.3%	2,106	18.7%
	Junior	1,812	16.0%	624	5.5%	2,436	21.6%
	Senior	2,237	19.8%	1,165	10.3%	3,402	30.1%
	Post Baccalaureate Degree Seeking	179	1.6%	511	4.5%	690	6.1%
	Post Baccalaureate Non-Degree	15	0.1%	144	1.3%	159	1.4%
	Other Undergraduate	31	0.3%	87	0.8%	118	1.0%
<b>Age</b>	Under 19	1,646	14.6%	32	0.3%	1,678	14.9%
	19-21	4,146	36.7%	421	3.7%	4,567	40.4%
	22-25	1,654	14.6%	935	8.3%	2,589	22.9%
	26-30	452	4.0%	604	5.3%	1,056	9.4%
	31-35	172	1.5%	361	3.2%	533	4.7%
	Over 35	200	1.8%	668	5.9%	868	7.7%
	Unknown	0	0.0%	0	0.0%	0	0.0%
	Average Age	21.4		29.5		23.6	
<b>Source</b>	Jefferson County	3,055	27.1%	1,719	15.2%	4,774	42.3%
	Other Metro Area Counties*	1,402	12.4%	586	5.2%	1,988	17.6%
	Other Alabama Counties	2,971	26.3%	547	4.8%	3,518	31.2%
	Other States	677	6.0%	135	1.2%	812	7.2%
	Other Countries	164	1.5%	34	0.3%	198	1.8%
	Unknown	1	0.0%	0	0.0%	1	0.0%
<b>College/School</b>	Arts and Sciences	4,965	44.0%	1,638	14.5%	6,603	58.5%
	Business	1,191	10.5%	621	5.5%	1,812	16.0%
	Dentistry (Dental Assisting)	21	0.2%	0	0.0%	21	0.2%
	Education	697	6.2%	232	2.1%	929	8.2%
	Engineering	729	6.5%	189	1.7%	918	8.1%
	Health Professions	371	3.3%	103	0.9%	474	4.2%
	Nursing	296	2.6%	238	2.1%	534	4.7%
	Unclassified (General Studies)						

\*Blount, Shelby, St. Clair, and Walker counties

Source: Institutional Effectiveness & Analysis

**UAB**  
**ENTERING FRESHMAN DEMOGRAPHICS**  
**FALL 2012**

		Full-time		Part-time		Total	
		Number	Percent	Number	Percent	Number	Percent
<b>Total</b>		1,654	98.7%	22	1.3%	1,676	100.0%
<b>Gender</b>	Female	945	56.4%	11	0.7%	956	57.0%
	Male	709	42.3%	11	0.7%	720	43.0%
<b>Race</b>	Nonresident Alien	17	1.0%	1	0.1%	18	1.1%
	Hispanic/Latino	50	3.0%	0	0.0%	50	3.0%
	American Indian or Alaska Native	8	0.5%	0	0.0%	8	0.5%
	Asian	109	6.5%	0	0.0%	109	6.5%
	Black or African-American	373	22.3%	5	0.3%	378	22.6%
	Native Hawaiian or Pacific Islander	1	0.1%	0	0.0%	1	0.1%
	White	1,023	61.0%	16	1.0%	1,039	62.0%
	Two or more races	65	3.9%	0	0.0%	65	3.9%
	Unknown	8	0.5%	0	0.0%	8	0.5%
<b>Race/Gender</b>	Black Female	257	15.3%	4	0.2%	261	15.6%
	White Female	554	33.1%	6	0.4%	560	33.4%
	Black Male	116	6.9%	1	0.1%	117	7.0%
	White Male	469	28.0%	10	0.6%	479	28.6%
<b>Age</b>	Under 19	1,542	92.0%	16	1.0%	1,558	93.0%
	19-21	98	5.8%	3	0.2%	101	6.0%
	22-25	13	0.8%	2	0.1%	15	0.9%
	26-30	1	0.1%	0	0.0%	1	0.1%
	31-35	0	0.0%	0	0.0%	0	0.0%
	Over 35	0	0.0%	1	0.1%	1	0.1%
	Unknown	0	0.0%	0	0.0%	0	0.0%
	Average Age	18.0		20.1		18.1	
<b>Source</b>	Jefferson County	464	27.7%	14	0.8%	478	28.5%
	Other Metro Area Counties*	270	16.1%	4	0.2%	274	16.3%
	Other Alabama Counties	698	41.6%	2	0.1%	700	41.8%
	Other States	205	12.2%	1	0.1%	206	12.3%
	Other Countries	17	1.0%	1	0.1%	18	1.1%
<b>School/Unit</b>	Arts & Sciences	1230	73.4%	15	0.9%	1,245	74.3%
	Business	140	8.4%	2	0.1%	142	8.5%
	Education	53	3.2%	0	0.0%	53	3.2%
	Engineering	207	12.4%	3	0.2%	210	12.5%
	Health Professions	24	1.4%	2	0.1%	26	1.6%
Conditionally Admitted						46 (2.7% of class)	
In Campus Housing						1156 (69.0% of class)	
Mean ACT						24.5	
Mean High School GPA						3.54	

Top Feeder High Schools: Hoover HS (61); Pelham HS (50); Oak Mountain HS (47); Hewitt-Trussville HS (37); Bob Jones HS (34); Thompson HS (34); Vestavia Hills HS (32); Sparkman HS (29); Gardendale HS (27); Homewood HS (27); Spain Park HS (25).

\*Blount, Shelby, St. Clair, and Walker counties

Source: Institutional Effectiveness & Analysis

**UAB  
GRADUATE STUDENT DEMOGRAPHICS  
FALL 2012**

		<u>Full-time</u>		<u>Part-time</u>		<u>Total</u>	
		<u>Number</u>	<u>Percent</u>	<u>Number</u>	<u>Percent</u>	<u>Number</u>	<u>Percent</u>
<b>Total</b>		2,650	46.8%	3,013	53.2%	5,663	100.0%
<b>Gender</b>	Female	1,652	29.2%	2,157	38.1%	3,809	67.3%
	Male	998	17.6%	856	15.1%	1,854	32.7%
<b>Race</b>	Non-Resident Alien	314	5.5%	77	1.4%	391	6.9%
	Hispanic/Latino	61	1.1%	84	1.5%	145	2.6%
	American Indian or Alaskan Native	4	0.1%	7	0.1%	11	0.2%
	Asian	89	1.6%	77	1.4%	166	2.9%
	Black or African American	302	5.3%	543	9.6%	845	14.9%
	Hawaiian or Pacific Islander	3	0.1%	3	0.1%	6	0.1%
	White	1,790	31.6%	2,152	38.0%	3,942	69.6%
	Two or More Races	44	0.8%	52	0.9%	96	1.7%
	Unknown	43	0.8%	18	0.3%	61	1.1%
<b>Class</b>	Graduate Certificate	19	0.3%	37	0.7%	56	1.0%
	Masters	1,630	28.8%	2,150	38.0%	3,780	66.7%
	Post Masters	3	0.1%	85	1.5%	88	1.6%
	Doctoral (Excluding D.M.D., M.D., O.D.)	974	17.2%	411	7.3%	1,385	24.5%
	Non-Degree Graduate	24	0.4%	330	5.8%	354	6.3%
<b>Age</b>	Under 19	0	0.0%	0	0.0%	0	0.0%
	19-21	27	0.5%	2	0.0%	29	0.5%
	22-25	1,081	19.1%	477	8.4%	1,558	27.5%
	26-30	865	15.3%	788	13.9%	1,653	29.2%
	31-35	310	5.5%	519	9.2%	829	14.6%
	Over 35	367	6.5%	1,227	21.7%	1,594	28.1%
	Unknown	0	0.0%	0	0.0%	0	0.0%
	Average Age	28.7		35.1		32.1	
<b>Source</b>	Jefferson County	667	11.8%	1,105	19.5%	1,772	31.3%
	Other Metro Area Counties*	248	4.4%	356	6.3%	604	10.7%
	Other Alabama Counties	543	9.6%	657	11.6%	1,200	21.2%
	Other States	876	15.5%	816	14.4%	1,692	29.9%
	Other Countries	314	5.5%	77	1.4%	391	6.9%
	Unknown	2	0.0%	2	0.0%	4	0.1%
<b>College/School</b>	Arts and Sciences	440	7.8%	188	3.3%	628	11.1%
	Business	118	2.1%	247	4.4%	365	6.4%
	Dentistry	0	0.0%	1	0.0%	1	0.0%
	Education	259	4.6%	489	8.6%	748	13.2%
	Engineering	126	2.2%	281	5.0%	407	7.2%
	Health Professions	638	11.3%	174	3.1%	812	14.3%
	Joint Health Sciences	368	6.5%	13	0.2%	381	6.7%
	Medicine	0	0.0%	0	0.0%	0	0.0%
	Nursing	380	6.7%	1,250	22.1%	1,630	28.8%
	Optometry	24	0.4%	1	0.0%	25	0.4%
	Public Health	276	4.9%	107	1.9%	383	6.8%
	Unclassified	21	0.4%	262	4.6%	283	5.0%

\*Blount, Shelby, St. Clair, and Walker counties

Source: Institutional Effectiveness & Analysis

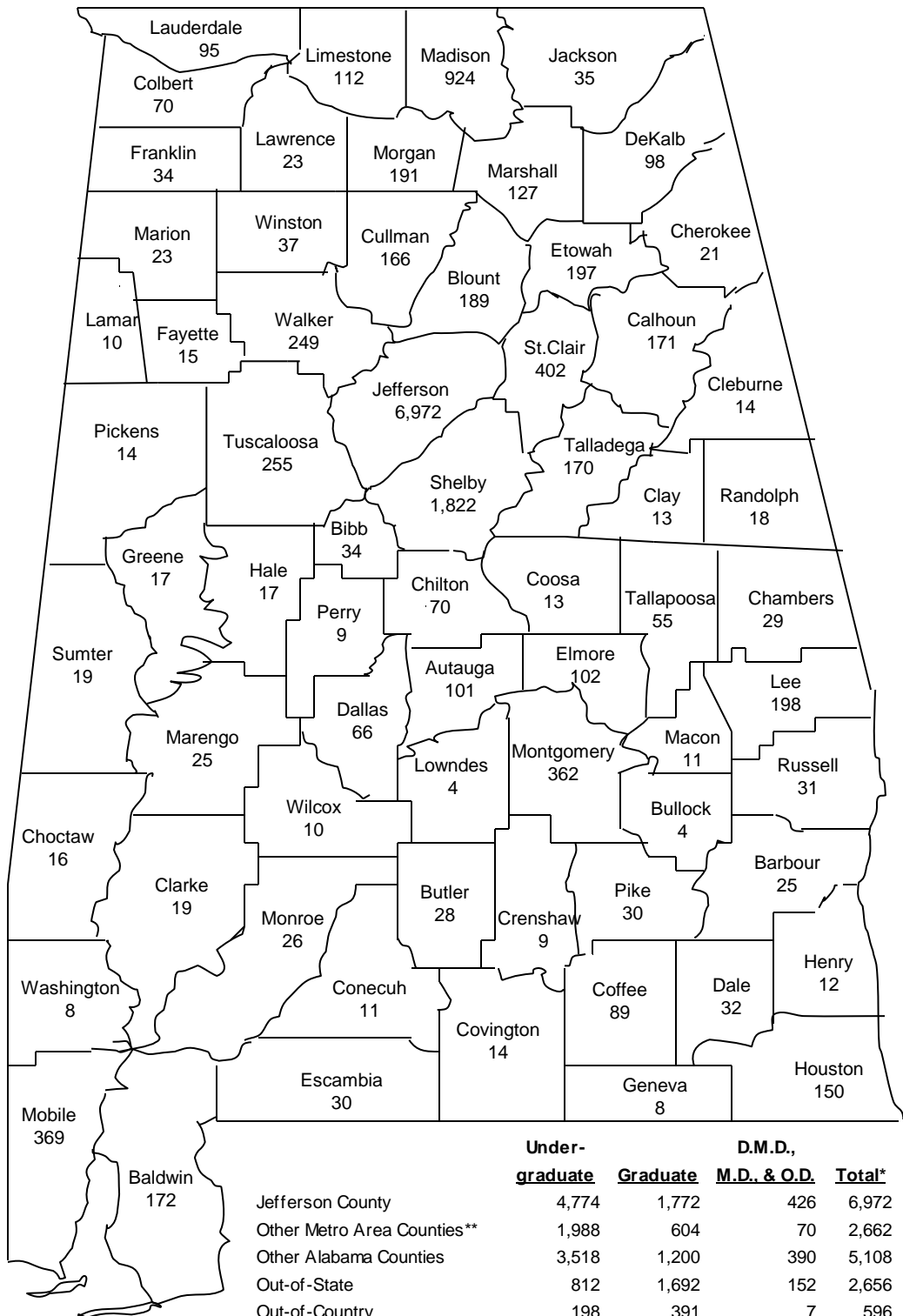
**UAB**  
**D.M.D., M.D., O.D. STUDENT DEMOGRAPHICS**  
**FALL 2012**

		<u>Full-time</u>		<u>Part-time</u>		<u>Total</u>	
		<u>Number</u>	<u>Percent</u>	<u>Number</u>	<u>Percent</u>	<u>Number</u>	<u>Percent</u>
<b>Total</b>		1,045	100.0%	0	0.0%	1,045	100.0%
<b>Gender</b>	Female	502	48.0%	0	0.0%	502	48.0%
	Male	543	52.0%	0	0.0%	543	52.0%
<b>Race</b>	Non-Resident Alien	7	0.7%	0	0.0%	7	0.7%
	Hispanic/Latino	17	1.6%	0	0.0%	17	1.6%
	American Indian or Alaskan Native	4	0.4%	0	0.0%	4	0.4%
	Asian	136	13.0%	0	0.0%	136	13.0%
	Black or African American	54	5.2%	0	0.0%	54	5.2%
	Hawaiian or Pacific Islander	0	0.0%	0	0.0%	0	0.0%
	White	778	74.4%	0	0.0%	778	74.4%
	Two or More Races	22	2.1%	0	0.0%	22	2.1%
<b>Class</b>	Unknown	27	2.6%	0	0.0%	27	2.6%
	First Year	288	27.6%	0	0.0%	288	27.6%
	Second Year	279	26.7%	0	0.0%	279	26.7%
	Third Year	235	22.5%	0	0.0%	235	22.5%
	Fourth Year	243	23.3%	0	0.0%	243	23.3%
<b>Age</b>	Under 19	0	0.0%	0	0.0%	0	0.0%
	19-21	20	1.9%	0	0.0%	20	1.9%
	22-25	748	71.6%	0	0.0%	748	71.6%
	26-30	231	22.1%	0	0.0%	231	22.1%
	31-35	34	3.3%	0	0.0%	34	3.3%
	Over 35	12	1.1%	0	0.0%	12	1.1%
	Unknown	0	0.0%	0	0.0%	0	0.0%
	Average Age	24.8		N/A		24.8	
<b>Source</b>	Jefferson County	426	40.8%	0	0.0%	426	40.8%
	Other Metro Area Counties*	70	6.7%	0	0.0%	70	6.7%
	Other Alabama Counties	390	37.3%	0	0.0%	390	37.3%
	Other States	152	14.5%	0	0.0%	152	14.5%
	Other Countries	7	0.7%	0	0.0%	7	0.7%
	Unknown	0	0.0%	0	0.0%	0	0.0%
<b>College/School</b>	Dentistry	231	22.1%	0	0.0%	231	22.1%
	Education		0.0%		0.0%	0	0.0%
	Engineering		0.0%		0.0%	0	0.0%
	SHRP		0.0%		0.0%	0	0.0%
	Joint Health Sciences		0.0%		0.0%	0	0.0%
	Medicine	639	61.1%	0	0.0%	639	61.1%
	Natural Sci & Math		0.0%		0.0%	0	0.0%
	Nursing		0.0%		0.0%	0	0.0%
	Optometry	175	16.7%	0	0.0%	175	16.7%
	Public Health	0	0.0%	0	0.0%	0	0.0%
	Soc & Behav Sciences	0	0.0%	0	0.0%	0	0.0%
	Unclassified	0	0.0%	0	0.0%	0	0.0%

\*Blount, Shelby, St. Clair, and Walker counties

Source: Institutional Effectiveness & Analysis

## UAB STUDENTS BY SOURCE, FALL 2012\*



	Under-graduate	Graduate	D.M.D., M.D., & O.D.	Total*
Jefferson County	4,774	1,772	426	6,972
Other Metro Area Counties**	1,988	604	70	2,662
Other Alabama Counties	3,518	1,200	390	5,108
Out-of-State	812	1,692	152	2,656
Out-of-Country	198	391	7	596
Unknown	1	4	0	5
<b>TOTAL</b>	<b>11,291</b>	<b>5,663</b>	<b>1,045</b>	<b>17,999</b>

\*Totals do not include 1,284 advanced professionals.

\*\*Blount, Shelby, St. Clair, and Walker counties.

## UAB FALL ENROLLMENT BY SCHOOL 2007-2012

figures exclude Advanced Professionals

	2007	2008	2009	2010*	2011	2012
Arts and Humanities	1,440	1,410	1,365	--	--	--
Arts and Sciences (excl. Education)**	--	--	--	5,034	5,130	7,231
Business	1,893	1,870	1,946	2,019	2,036	2,177
Dentistry	249	251	256	266	264	253
Education	1,574	1,574	1,720	1,866	1,814	1,677
Engineering	909	1,032	1,094	1,169	1,240	1,325
Health Professions	1,874	1,779	1,893	1,922	1,907	1,286
Joint Health Sciences	441	449	428	422	399	381
Medicine	612	623	627	617	635	639
Natural Sciences and Mathematics	1,680	1,699	1,829	--	--	--
Nursing	860	1,249	1,579	1,812	1,880	2,164
Optometry	190	201	201	199	196	200
Public Health	426	409	395	343	310	383
Social and Behavioral Sciences	1,922	1,783	1,768	--	--	--
Unclassified**	2,176	1,820	1,773	1,874	1,764	283
<b>TOTAL</b>	<b>16,246</b>	<b>16,149</b>	<b>16,874</b>	<b>17,543</b>	<b>17,575</b>	<b>17,999</b>

\*Effective January 1, 2010, the Schools of Arts and Humanities, Education, Natural Sciences and Mathematics, and Social and Behavioral Sciences merged and realigned as the College of Arts and Sciences.

\*\*Effective Fall 2012, undergraduates with undeclared majors were moved from unclassified to the College of Arts and Sciences

Source: UAB Headcount Enrollment Reports, 2007-2012

## UAB FALL ENROLLMENT BY CLASS 2007-2012

figures exclude Advanced Professionals

	2007	2008	2009	2010	2011	2012
Entering Freshmen	1,416	1,277	1,517	1,571	1,605	1,676
Other Freshmen	855	673	601	673	676	704
Sophomores	2,032	1,953	1,974	2,028	2,106	2,106
Juniors	2,366	2,283	2,281	2,337	2,404	2,436
Seniors	3,559	3,166	3,132	3,233	3,279	3,402
Other Undergraduates	568	1,017	1,141	1,186	1,058	967
Graduate Certificate	--	--	--	--	39	56
Master's	2,686	2,923	3,275	3,513	3,585	3,780
Educational Specialist	60	73	77	100	59	88
Doctoral (Excl. D.M.D., M.D., and O.D.)	1,163	1,279	1,358	1,397	1,383	1,385
Nondegree Graduates	540	480	483	473	336	354
D.M.D., M.D. and O.D.	1,001	1,025	1,035	1,032	1,045	1,045
<b>TOTAL</b>	<b>16,246</b>	<b>16,149</b>	<b>16,874</b>	<b>17,543</b>	<b>17,575</b>	<b>17,999</b>

Source: Institutional Effectiveness & Analysis

## UAB FALL ENROLLMENT BY STUDENT LEVEL 1969-2012

	Para- professional <sup>1</sup>	Under- graduate	Graduate	D.M.D., M.D., & O.D.	Total for Reporting	Advanced Professional <sup>2</sup>	Total
1969	88	3,881	564	560	5,093	288	5,381
1970	154	5,001	745	603	6,503	280	6,783
1971	222	5,320	881	674	7,097	342	7,439
1972	232	6,233	1,272	749	8,486	482	8,968
1973	283	6,547	1,379	819	9,028	443	9,471
1974	435	6,821	1,849	778	9,883	461	10,344
1975	512	8,123	2,226	780	11,641	478	12,119
1976	512	8,471	2,192	867	12,042	497	12,539
1977	538	8,622	2,422	958	12,540	582	13,122
1978	624	9,004	2,528	1,071	13,227	572	13,799
1979	565	9,229	2,757	1,070	13,621	593	14,214
1980	484	9,618	2,684	1,068	13,854	594	14,448
1981	523	9,790	2,537	1,017	13,867	607	14,474
1982	498	10,170	2,280	946	13,894	636	14,530
1983	489	10,426	2,165	916	13,996	683	14,679
1984	482	9,914	2,228	893	13,517	683	14,200
1985	386	9,773	2,445	907	13,511	690	14,201
1986	376	9,594	2,675	893	13,538	710	14,248
1987	321	9,543	2,739	876	13,479	766	14,245
1988	334	9,723	2,939	890	13,886	769	14,655
1989	365	10,251	3,154	922	14,692	816	15,508
1990	397	10,688	3,335	936	15,356	930	16,286
1991	439	11,313	3,244	926	15,922	862	16,784
1992	442	11,234	3,126	940	15,742	916	16,658
1993 <sup>3</sup>	472	11,186	3,290	965	15,913	875	16,788
1994	137	10,668	3,571	986	15,362	890	16,252
1995	0	10,747	3,746	1,009	15,502	950	16,452
1996	0	10,692	3,595	987	15,274	891	16,165
1997	0	10,358	3,586	989	14,933	917	15,850
1998	0	10,433	3,621	1,002	15,056	960	16,016
1999	0	10,420	3,674	1,004	15,098	983	16,081
2000	0	10,331	3,641	979	14,951	970	15,921
2001	0	9,954	3,766	975	14,695	981	15,676
2002	0	10,501	4,096	982	15,579	937	16,516
2003	0	11,046	4,325	986	16,357	988	17,345
2004	0	11,441	4,275	977	16,693	1,047	17,740
2005	0	11,470	4,135	967	16,572	1,012	17,584
2006	0	11,284	4,302	975	16,561	1,030	17,591
2007	0	10,796	4,449	1,001	16,246	1,084	17,330
2008	0	10,369	4,755	1,025	16,149	1,132	17,281
2009	0	10,646	5,193	1,035	16,874	1,173	18,047
2010	0	11,028	5,483	1,032	17,543	1,160	18,703
2011	0	11,128	5,402	1,045	17,575	1,202	18,777
2012	0	11,291	5,663	1,045	17,999	1,284	19,283

Note: "Total for Reporting" is the total reported to state and federal agencies and included in documents such as surveys and questionnaires.

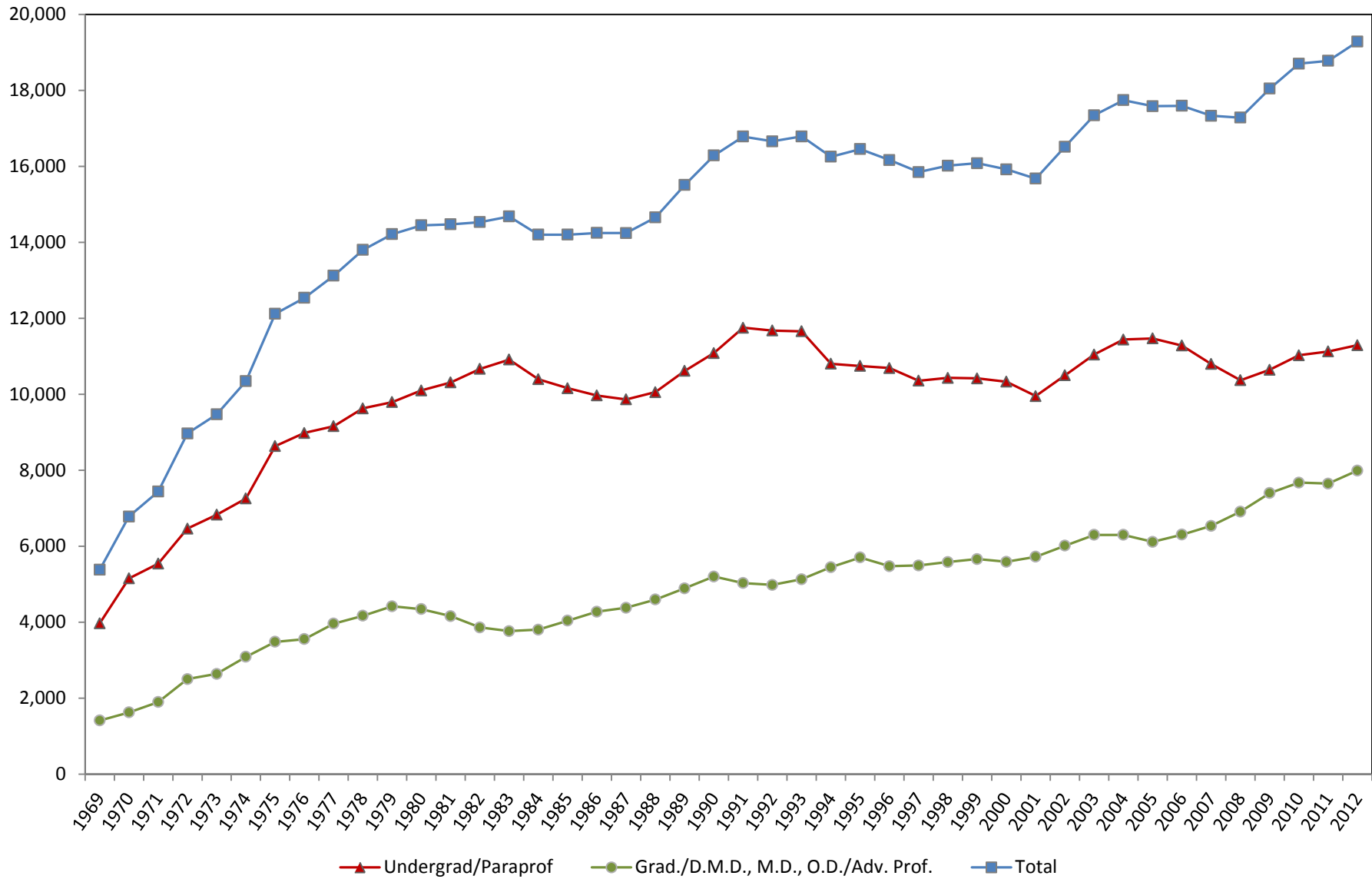
<sup>1</sup>The certificate programs in Health Professions were phased out beginning in 1994. Dental Assisting and Dental Lab Tech were eliminated in 1995; Dental Assisting was reinstated in Fall 2000. Students in the certificate programs in EMT (phased out in 2007) and reinstated Dental Assisting are included with undergraduates.

<sup>2</sup>Advanced Professionals are interns, residents, and postdoctoral fellows who are at UAB to participate in specialized training beyond their academic or professional degrees.

<sup>3</sup>Beginning in 1993, students taking classes off campus are included in the headcount enrollment.

Source: UAB Headcount Enrollment Reports 1969-2012

## UAB FALL HEADCOUNT ENROLLMENT 1969-2012



Note: Beginning in Fall 1993, figures include students enrolled off campus. 40



**UAB FALL ENROLLMENT  
FULL-TIME AND PART-TIME BY GENDER  
1985-2012**

<u>Year</u>	<u>Full-time</u>		<u>Part-time</u>		<u>Total</u>		<u>Percent Part-time</u>
	<u>Men</u>	<u>Women</u>	<u>Men</u>	<u>Women</u>	<u>Men</u>	<u>Women</u>	
1985	3,603	4,124	2,594	3,190	6,197	7,314	43%
1986	3,693	4,082	2,514	3,249	6,207	7,331	43%
1987	3,666	4,220	2,439	3,154	6,105	7,374	41%
1988	3,786	4,329	2,492	3,279	6,278	7,608	42%
1989	3,930	4,521	2,650	3,591	6,580	8,112	42%
1990	4,187	4,813	2,677	3,679	6,864	8,492	41%
1991	4,390	5,023	2,759	3,750	7,149	8,773	41%
1992	4,418	5,091	2,699	3,534	7,117	8,625	40%
1993 *	4,560	5,201	2,678	3,474	7,238	8,675	39%
1994	4,460	5,146	2,486	3,270	6,946	8,416	37%
1995	4,538	5,334	2,367	3,263	6,905	8,597	36%
1996	4,464	5,467	2,275	3,068	6,739	8,535	35%
1997	4,561	5,385	2,109	2,878	6,670	8,263	33%
1998	4,412	5,657	2,065	2,922	6,477	8,579	33%
1999	4,419	5,778	1,977	2,924	6,396	8,702	32%
2000	4,472	5,920	1,805	2,754	6,277	8,674	30%
2001	4,145	5,515	2,010	3,025	6,155	8,540	34%
2002	4,398	5,908	2,064	3,209	6,462	9,117	34%
2003	4,574	6,340	2,061	3,382	6,635	9,722	33%
2004	4,545	6,655	2,101	3,392	6,646	10,047	33%
2005	4,580	6,746	1,993	3,253	6,573	9,999	32%
2006	4,620	6,729	1,951	3,261	6,571	9,990	31%
2007	4,605	6,590	1,875	3,176	6,480	9,766	31%
2008	4,624	6,473	1,807	3,245	6,431	9,718	31%
2009	4,933	6,715	1,881	3,345	6,814	10,060	31%
2010	5,048	6,839	1,933	3,723	6,981	10,562	32%
2011	4,958	6,706	2,021	3,890	6,979	10,596	34%
2012	5,072	6,893	2,091	3,943	7,163	10,836	34%

**UAB FALL ENROLLMENT BY STUDENT SOURCE  
2008-2012**

	<u>2008</u>	<u>2009</u>	<u>2010</u>	<u>2011</u>	<u>2012</u>
Jefferson County	6,676	6,846	7,112	7,031	6,972
Other Metro Area Counties**	2,161	2,426	2,617	2,614	2,662
Other Alabama Counties	4,663	4,791	4,990	5,045	5,108
Out-of-State	1,869	2,069	2,192	2,305	2,656
Out-of-Country	777	736	627	575	596
Unknown	3	6	5	5	5
TOTAL	16,149	16,874	17,543	17,575	17,999

Note: Totals do not include advanced professionals.

\*Beginning in 1993, students taking classes off campus are included in the headcount enrollment.

\*\*Blount, Shelby, St. Clair, and Walker counties.

Source: Institutional Effectiveness and Analysis

## UAB CREDIT HOUR PRODUCTION FALL 2012

	<b>Lower Division Undergrad.<sup>1</sup></b>	<b>Upper Division Undergrad.<sup>2</sup></b>	<b>Graduate One<sup>3</sup></b>	<b>Graduate Two<sup>4</sup></b>	<b>Total</b>
Arts and Sciences	72,967	17,063	3,547	2,045	95,622
Business	7,974	11,255	2,911	101	22,241
Dental Assisting	294	0	0	0	294
Education	2,752	5,430	5,001	397	13,580
Engineering	3,049	3,374	1,987	571	8,981
Health Professions	1,095	5,060	7,834	2,208	16,197
Joint Health Sciences	0	25	80	3,251	3,356
Nursing	508	5,183	10,652	1,282	17,625
Optometry (Vision Science)	0	0	59	212	271
Public Health	0	135	3,322	588	4,045
Graduate School	0	0	18	729	747
Provost's Office <sup>5</sup>	1,296	402	0	0	1,698
ROTC/Cooperative Education	96	150	0	0	246
<b>TOTAL</b>	<b>90,031</b>	<b>48,077</b>	<b>35,411</b>	<b>11,384</b>	<b>184,903</b>

Note: D.M.D., M.D., and O.D. programs in Dentistry, Medicine, and Optometry do not generate credit hours.

<sup>1</sup>Includes courses numbered 095-299.

<sup>2</sup>Includes courses numbered 300-499.

<sup>3</sup>Includes courses numbered 500-699 except in Education, where courses numbered 700-739 are included.

<sup>4</sup>Includes courses numbered 700-799.

<sup>5</sup>Includes interdisciplinary hours or those hours generated by instructors not affiliated with an academic unit.

Source: Institutional Effectiveness and Analysis, ACHE Credit Hour Production Reports

**UAB ANNUAL CREDIT HOUR PRODUCTION BY SCHOOL**  
**2005-06 through 2011-12**

	<u>2005-06</u>	<u>2006-07</u>	<u>2007-08</u>	<u>2008-09</u>	<u>2009-10</u>	<u>2010-11</u>	<u>2011-12</u>
<b>ARTS AND HUMANITIES</b>							
Lower Division Undergraduate	58,170	56,144	51,994	47,813	-	-	-
Upper Division Undergraduate	13,564	13,972	14,228	14,180	-	-	-
Graduate 1	2,051	2,056	1,963	2,102	-	-	-
Graduate 2	<u>0</u>	<u>0</u>	<u>0</u>	<u>3</u>	-	-	-
Total	73,785	72,172	68,185	64,098	-	-	-
<b>ARTS AND SCIENCES*</b>							
Lower Division Undergraduate	-	-	-	-	146,431	150,855	149,255
Upper Division Undergraduate	-	-	-	-	40,487	41,273	41,340
Graduate 1	-	-	-	-	7,962	7,230	7,939
Graduate 2	<u>-</u>	<u>-</u>	<u>-</u>	<u>-</u>	<u>5,215</u>	<u>5,346</u>	<u>5,191</u>
Total	-	-	-	-	200,095	204,704	203,725
<b>BUSINESS</b>							
Lower Division Undergraduate	14,854	14,563	13,413	13,017	12,730	13,176	15,467
Upper Division Undergraduate	20,456	20,671	20,194	20,942	24,739	25,452	24,903
Graduate 1	7,263	7,791	7,539	6,897	7,626	7,689	7,728
Graduate 2	<u>157</u>	<u>178</u>	<u>202</u>	<u>152</u>	<u>345</u>	<u>266</u>	<u>217</u>
Total	42,730	43,203	41,348	41,008	45,440	46,583	48,315
<b>DENTISTRY (Dental Assisting)</b>							
Lower Division Undergraduate	<u>688</u>	<u>888</u>	<u>795</u>	<u>764</u>	<u>836</u>	<u>1,053</u>	<u>895</u>
Total	688	888	795	764	836	1,053	895
<b>EDUCATION</b>							
Lower Division Undergraduate	4,520	5,253	5,414	5,393	5,903	6,035	6,936
Upper Division Undergraduate	11,776	13,353	12,812	13,126	14,183	13,210	12,503
Graduate 1	16,382	15,348	15,933	15,494	17,851	16,316	14,167
Graduate 2	<u>778</u>	<u>692</u>	<u>508</u>	<u>1,158</u>	<u>608</u>	<u>1,362</u>	<u>1,589</u>
Total	33,456	34,646	34,667	35,171	38,545	36,923	35,195
<b>ENGINEERING</b>							
Lower Division Undergraduate	4,020	4,150	4,349	4,870	5,250	5,766	5,743
Upper Division Undergraduate	5,603	5,911	6,036	6,203	6,666	6,955	7,588
Graduate 1	2,905	3,181	3,592	4,469	4,262	5,854	5,490
Graduate 2	<u>1,507</u>	<u>1,345</u>	<u>1,164</u>	<u>1,243</u>	<u>1,483</u>	<u>1,478</u>	<u>1,620</u>
Total	14,035	14,587	15,141	16,785	17,661	20,053	20,441
<b>HEALTH PROFESSIONS</b>							
Lower Division Undergraduate	1,308	1,086	1,542	1,967	1,983	2,493	2,583
Upper Division Undergraduate	15,236	15,116	14,361	13,894	13,160	12,413	12,831
Graduate 1	16,344	18,319	19,408	19,260	21,147	22,342	22,888
Graduate 2	<u>4,520</u>	<u>4,760</u>	<u>5,025</u>	<u>5,421</u>	<u>5,653</u>	<u>5,751</u>	<u>6,220</u>
Total	37,408	39,281	40,336	40,542	41,943	42,999	44,522
<b>JOINT HEALTH SCIENCES</b>							
Lower Division Undergraduate	0	0	42	0	9	0	0
Upper Division Undergraduate	0	0	0	0	0	35	46
Graduate 1	268	185	172	250	301	298	282
Graduate 2	<u>15,550</u>	<u>15,399</u>	<u>15,205</u>	<u>14,097</u>	<u>12,791</u>	<u>11,897</u>	<u>10,420</u>
Total	15,818	15,584	15,419	14,347	13,101	12,230	10,748
<b>MEDICINE (EMT PROGRAM)</b>							
Lower Division Undergraduate	1,012	577	-	-	-	-	-
Upper Division Undergraduate	<u>8</u>	<u>12</u>	<u>-</u>	<u>-</u>	<u>-</u>	<u>-</u>	<u>-</u>
Total	1,020	589	-	-	-	-	-

## UAB ANNUAL CREDIT HOUR PRODUCTION BY SCHOOL (CONTINUED)

	<u>2005-06</u>	<u>2006-07</u>	<u>2007-08</u>	<u>2008-09</u>	<u>2009-10</u>	<u>2010-11</u>	<u>2011-12</u>
<b>NATURAL SCIENCES AND MATHEMATICS</b>							
Lower Division Undergraduate	71,982	68,575	62,460	60,476	-	-	-
Upper Division Undergraduate	7,758	8,647	9,179	9,092	-	-	-
Graduate 1	2,866	2,640	2,522	2,590	-	-	-
Graduate 2	2,437	2,503	2,515	2,709	-	-	-
Total	<u>85,043</u>	<u>82,365</u>	<u>76,676</u>	<u>74,867</u>	<u>-</u>	<u>-</u>	<u>-</u>
<b>NURSING</b>							
Lower Division Undergraduate	0	93	72	576	506	420	520
Upper Division Undergraduate	12,392	13,228	14,478	15,349	16,626	16,699	16,150
Graduate 1	4,651	5,873	8,485	13,916	18,145	19,026	23,075
Graduate 2	390	666	1,213	3,148	3,365	3,247	3,019
Total	<u>17,433</u>	<u>19,860</u>	<u>24,248</u>	<u>32,989</u>	<u>38,642</u>	<u>39,392</u>	<u>42,764</u>
<b>OPTOMETRY (Vision Science)</b>							
Upper Division Undergraduate	0	0	0	0	0	21	0
Graduate 1	164	93	155	185	185	329	233
Graduate 2	579	593	579	523	421	482	490
Total	<u>743</u>	<u>686</u>	<u>734</u>	<u>708</u>	<u>606</u>	<u>832</u>	<u>723</u>
<b>PUBLIC HEALTH</b>							
Lower Division Undergraduate	0	33	48	27	75	0	0
Upper Division Undergraduate	66	195	147	84	78	84	147
Graduate 1	7,268	8,504	8,670	8,266	8,153	6,573	6,204
Graduate 2	1,728	1,993	1,565	1,582	1,723	1,673	1,564
Total	<u>9,062</u>	<u>10,725</u>	<u>10,430</u>	<u>9,959</u>	<u>10,029</u>	<u>8,330</u>	<u>7,915</u>
<b>SOCIAL AND BEHAVIORAL SCIENCES</b>							
Lower Division Undergraduate	41,487	38,454	36,393	34,400	-	-	-
Upper Division Undergraduate	20,947	19,568	19,480	17,504	-	-	-
Graduate 1	2,427	2,451	2,971	3,153	-	-	-
Graduate 2	2,230	2,236	2,044	2,252	-	-	-
Total	<u>67,091</u>	<u>62,709</u>	<u>60,888</u>	<u>57,309</u>	<u>-</u>	<u>-</u>	<u>-</u>
<b>ROTC/COOPERATIVE ED/PROVOST'S OFFICE</b>							
Lower Division Undergraduate	824	634	612	966	1,189	1,127	185
Upper Division Undergraduate	240	264	353	438	532	728	345
Total	<u>1,064</u>	<u>898</u>	<u>965</u>	<u>1,404</u>	<u>1,721</u>	<u>1,855</u>	<u>530</u>
<b>GRADUATE SCHOOL</b>							
Graduate 1	81	90	51	66	71	60	54
Graduate 2	1,153	1,319	1,424	1,574	1,271	1,419	1,488
Total	<u>1,234</u>	<u>1,409</u>	<u>1,475</u>	<u>1,640</u>	<u>1,342</u>	<u>1,479</u>	<u>1,542</u>
<b>TOTAL UAB</b>							
Lower Division Undergraduate	198,865	190,450	177,134	170,269	174,912	180,925	181,584
Upper Division Undergraduate	108,046	110,937	111,268	110,812	116,471	116,870	115,853
Graduate 1	62,670	66,531	71,461	76,648	85,703	85,717	88,060
Graduate 2	<u>31,029</u>	<u>31,684</u>	<u>31,444</u>	<u>33,862</u>	<u>32,875</u>	<u>32,921</u>	<u>31,818</u>
<b>GRAND TOTAL</b>	<b>400,610</b>	<b>399,602</b>	<b>391,307</b>	<b>391,591</b>	<b>409,961</b>	<b>416,433</b>	<b>417,315</b>

\* While the consolidation of A&H, NSM, and SBS into the College of Arts and Sciences occurred in January, 2010, the 2009-10 A&S annual total includes the fall 2009 credit hours generated by the separate schools.

Note: D.M.D., M.D., and O.D. programs in Dentistry, Medicine, and Optometry do not generate credit hours.

## DEGREES OFFERED AT UAB

<u>CIP Code*/Degree Program</u>	<u>Undergraduate Degrees</u>	<u>Graduate Degrees</u>
<b>COLLEGE OF ARTS AND SCIENCES</b>		
05.0201 African American Studies	B.A. <sup>1</sup>	
45.0201 Anthropology	B.A.	M.A. <sup>3</sup>
27.0301 Applied Mathematics		Ph.D. <sup>6</sup>
50.0701 Art	B.A., B.F.A.	
50.0703 Art History		M.A. <sup>2</sup>
26.0101 Biology	B.S.	M.S., Ph.D.
40.0501 Chemistry	B.S.	M.S., Ph.D.
09.0101 Communication Management		M.A.
09.0101 Communication Studies	B.A.	
11.0101 Computer and Information Sciences	B.S.	M.S., Ph.D.
11.1003 Computer Forensics and Security Management		M.S.
43.0199 Criminal Justice	B.S.	M.S.C.J.
23.0101 English	B.A.	M.A.
16.0101 Foreign Languages	B.A.	
43.0106 Forensic Science		M.S.F.S.
54.0101 History	B.A.	M.A.
45.9999 International Studies	B.A.	
27.0101 Mathematics	B.S.	M.S.
50.0901 Music	B.A.	
30.0101 Natural Science	B.S.	
26.1501 Neuroscience	B.S.	
38.0101 Philosophy	B.A.	
40.0801 Physics	B.S.	M.S., Ph.D.
45.1001 Political Science	B.A.	
42.0101 Psychology	B.S.	M.A., Ph.D.
44.0401 Public Administration		M.P.A.
44.0701 Social Work	B.S.S.W.	
45.1101 Sociology	B.A.	M.A.
45.1101 Sociology, Medical		Ph.D.
50.0501 Theatre	B.A.	
<b>SCHOOL OF BUSINESS</b>		
52.0301 Accounting	B.S.	M.Ac.
51.0701 Administration/Health Services		Ph.D.
52.0201 Business Administration		M.B.A.
52.0601 Economics	B.A., B.S.	
52.0801 Finance	B.S.	
52.0299 Industrial Distribution	B.S.	
52.1201 Information Systems	B.S.	
52.0201 Management	B.S.	
52.1201 Management Information Systems		M.S.
52.1401 Marketing	B.S.	
<b>SCHOOL OF DENTISTRY</b>		
51.0601 Dental Assisting	Certificate	
51.0401 Dentistry		D.M.D.
51.0501 Dentistry		M.S.

## DEGREES OFFERED AT UAB (CONTINUED)

<u>CIP Code*/Degree Program</u>	<u>Undergraduate Degrees</u>	<u>Graduate Degrees</u>
<b>SCHOOL OF EDUCATION</b>		
13.1302 Arts Education		M.A. in Education
13.1101 Counseling		M.A.
13.1210 Early Childhood Education	B.S.	M.A. in Education, Ph.D.
13.0101 Education		Ed.S.
13.0401 Educational Leadership		M.A. in Education, Ed.S., Ed.D. <sup>2</sup> , Ph.D. <sup>2</sup>
13.1202 Elementary Education	B.S.	M.A. in Education
13.1401 English as a Second Language		M.A. in Education
13.1307 Health Education	B.S.	M.A. in Education
31.0599 Health Education/Promotion		Ph.D. <sup>2</sup>
13.1205 High School Education	B.S.	M.A. in Education
13.1314 Physical Education	B.S.	M.A. in Education
13.1315 Reading		M.A. in Education
13.1001 Special Education		M.A. in Education
<b>SCHOOL OF ENGINEERING</b>		
14.0501 Biomedical Engineering	B.S.B.M.E.	M.S.B.M.E., Ph.D.
14.0801 Civil Engineering	B.S.C.E.	M.S.C.E., Ph.D. <sup>4</sup>
14.0901 Computer Engineering		Ph.D. <sup>5</sup>
14.1001 Electrical Engineering	B.S.E.E.	M.S.E.E.
14.0101 Engineering		M.Eng.
14.9999 Interdisciplinary Engineering		Ph.D.
14.1801 Materials Engineering	B.S.Mt.E.	M.S.Mt.E., Ph.D. <sup>2</sup>
30.9999 Materials Science		Ph.D. <sup>6</sup>
14.1901 Mechanical Engineering	B.S.M.E.	M.S.M.E.
<b>SCHOOL OF HEALTH PROFESSIONS</b>		
51.0701 Administration/Health Services		D.Sc., Ph.D.
26.0102 Biomedical Sciences	B.S.	
26.1201 Biotechnology		M.S.
51.1005 Clinical Laboratory Science		M.S.
51.3101 Dietetic Internship	Certificate (Postbaccalaureate)	
51.1509 Genetic Counseling		M.S.
51.0701 Health Administration		M.S.H.A.
51.0701 Health Care Management	B.S.	
51.0799 Health Informatics		M.S.H.I.
51.0706 Health Information Management	B.S.	
51.1005 Medical Technology	B.S.	
51.0905 Nuclear Medicine Technology	B.S.	
51.3102 Nutrition Sciences		M.S.
30.1901 Nutrition Sciences		Ph.D.
51.2306 Occupational Therapy		M.S.
51.2308 Physical Therapy		D.P.T.
51.0912 Physician Assistant Studies		M.S.P.A.S.
51.2399 Rehabilitation Science		Ph.D.
51.0908 Respiratory Therapy	B.S.	

## DEGREES OFFERED AT UAB (CONTINUED)

<u>CIP Code*/Degree Program</u>	<u>Undergraduate Degrees</u>	<u>Graduate Degrees</u>
<b>JOINT HEALTH SCIENCES (Schools of Dentistry and Medicine)</b>		
26.0102 Basic Medical Sciences		M.S.B.M.S.
26.0205 Biochemistry and Molecular Genetics		Ph.D.
26.0401 Cell Biology		Ph.D.
26.0902 Cellular and Molecular Physiology		Ph.D.
26.0806 Genetics		Ph.D.
26.0502 Microbiology		Ph.D.
26.1503 Neurobiology		Ph.D.
26.1501 Neuroscience	B.S.	
26.0910 Pathology		Ph.D.
26.1007 Pharmacology and Toxicology		Ph.D.
<b>SCHOOL OF MEDICINE</b>		
51.1201 Medicine		M.D.
<b>SCHOOL OF NURSING</b>		
51.3804 Nurse Anesthesia		M.S.N.
51.3801 Nursing	B.S.N.	M.S.N.
51.3818 Nursing		D.N.P. <sup>6</sup>
51.3808 Nursing		Ph.D.
<b>SCHOOL OF OPTOMETRY</b>		
51.1701 Optometry		O.D.
26.0909 Vision Science		M.S., Ph.D.
<b>SCHOOL OF PUBLIC HEALTH</b>		
26.1102 Biostatistics		M.S., Ph.D.
51.2202 Environmental Health Sciences		Ph.D.
26.1309 Epidemiology		Ph.D.
31.0599 Health Education/Promotion		Ph.D. <sup>2</sup>
51.2201 Public Health	B.S.	M.P.H., M.S.P.H., Dr.P.H.

\* Classification of Instructional Programs developed by the U.S. Department of Education's National Center for Education Statistics.

Note: Joint and shared programs are those in which UAB awards the degree. Cooperative programs are those in which students take classes at UAB but the degree is awarded by another institution.

<sup>1</sup> Shared program with the University of Alabama

<sup>2</sup> Joint program with the University of Alabama.

<sup>3</sup> Cooperative program with the University of Alabama.

<sup>4</sup> Joint program with the University of Alabama in Huntsville.

<sup>5</sup> Shared program with the University of Alabama in Huntsville.

<sup>6</sup> Joint program with the University of Alabama and the University of Alabama in Huntsville.

**DEGREES OFFERED AT UAB (CONTINUED)**

**TOTAL DEGREES AVAILABLE**

Certificates		2
Postbaccalaureate	1	
Subbaccalaureate	1	
Baccalaureate		51
Master's		51
Specialist's		2
Doctoral		37
D.M.D., M.D., O.D.		<u>3</u>
Total		146



**UAB DEGREES AWARDED BY SCHOOL**  
**1969-70 through 2011-12 <sup>1</sup>**

	<b>1969-70 - 2001-02</b>	<b>2002-03</b>	<b>2003-04</b>	<b>2004-05</b>	<b>2005-06</b>	<b>2006-07</b>	<b>2007-08</b>	<b>2008-09</b>	<b>2009-10</b>	<b>2010-11</b>	<b>2011-12</b>	<b>Grand Total</b>
<b>ARTS AND HUMANITIES</b>												
Bachelor's	3,190	199	226	221	237	281	280	326	-	-	-	4,960
Master's	242	9	14	8	26	25	29	31	-	-	-	384
<b>ARTS AND SCIENCES</b>												
Bachelor's	-	-	-	-	-	-	-	-	916	908	961	2,785
Master's	-	-	-	-	-	-	-	-	137	161	135	433
Doctor's - Research/Scholarship	-	-	-	-	-	-	-	-	20	35	34	89
<b>BUSINESS <sup>2</sup></b>												
Bachelor's	7,657	286	334	378	331	293	334	309	313	365	333	10,933
Master's	2,960	149	153	179	166	146	144	165	129	148	187	4,526
<b>DENTISTRY</b>												
Certificates	474	11	21	12	25	12	21	16	16	17	22	647
Bachelor's	130	0	0	0	0	0	0	0	0	0	0	130
Master's	247	8	11	9	12	10	13	10	14	15	12	361
First Professional	1,847	54	56	56	56	58	51	56	-	-	-	2,234
Doctor's - Professional Practice	-	-	-	-	-	-	-	-	52	58	65	175
<b>EDUCATION</b>												
Bachelor's	6,414	136	116	116	108	133	142	128	155	160	144	7,752
Master's	11,528	354	331	447	356	272	288	262	304	307	336	14,785
Postmaster's	1,803	60	37	50	59	29	28	20	42	36	64	2,228
Doctorates	166	20	9	9	13	17	17	13	-	-	-	264
Doctor's - Professional Practice	-	-	-	-	-	-	-	-	1	6	2	9
Doctor's - Research/Scholarship	-	-	-	-	-	-	-	-	8	12	13	33
<b>ENGINEERING</b>												
Bachelor's	2,596	73	74	63	76	101	117	97	107	111	116	3,531
Master's	863	91	88	96	78	76	74	82	134	114	134	1,830
Doctorates	90	11	8	6	19	15	13	14	-	-	-	176
Doctor's - Research/Scholarship	-	-	-	-	-	-	-	-	6	12	14	32
<b>HEALTH PROFESSIONS</b>												
Certificates	9,349	23	34	11	33	21	14	11	21	23	23	9,563
Bachelor's	3,583	118	124	140	155	184	173	152	172	147	126	5,074
Master's	2,295	183	165	175	150	163	199	194	206	216	237	4,183
Doctorates <sup>2</sup>	75	5	9	5	17	46	41	37	-	-	-	235
Doctor's - Professional Practice	-	-	-	-	-	-	-	-	33	38	45	116
Doctor's - Research/Scholarship <sup>2</sup>	-	-	-	-	-	-	-	-	2	10	8	20
Doctor's - Other	-	-	-	-	-	-	-	-	0	0	0	0
<b>JOINT HEALTH SCIENCES</b>												
Master's	288	7	5	9	11	10	3	6	5	2	7	353
Doctorates	844	54	48	53	46	57	67	61	-	-	-	1,230
Doctor's - Research/Scholarship	-	-	-	-	-	-	-	-	71	70	75	216
<b>MEDICINE</b>												
Certificates	0	6	0	0	0	0	0	0	0	0	0	6
First Professional	4,794	157	160	166	165	152	160	161	-	-	-	5,915
Doctor's - Professional Practice	-	-	-	-	-	-	-	-	164	160	178	502

# **UAB DEGREES AWARDED BY SCHOOL**

	<b>1969-70 - 2001-02</b>	<b>2002-03</b>	<b>2003-04</b>	<b>2004-05</b>	<b>2005-06</b>	<b>2006-07</b>	<b>2007-08</b>	<b>2008-09</b>	<b>2009-10</b>	<b>2010-11</b>	<b>2011-12</b>	<b>Grand Total</b>
<b>1969-70 through 2011-12 <sup>1</sup></b>												
<b>NATURAL SCIENCES AND MATHEMATICS</b>												
Bachelor's	4,596	154	187	155	188	213	218	198	-	-	-	5,909
Master's	860	45	57	65	61	37	53	37	-	-	-	1,215
Doctorates	205	12	6	14	12	21	18	9	-	-	-	297
<b>NURSING</b>												
Bachelor's	5,585	96	111	155	163	193	193	235	258	306	306	7,601
Master's	2,658	69	44	65	62	83	94	124	217	295	323	4,034
Doctorates	349	17	6	10	7	1	4	12	-	-	-	406
Doctor's - Professional Practice	-	-	-	-	-	-	-	-	56	62	61	179
Doctor's - Research/Scholarship	-	-	-	-	-	-	-	-	6	6	10	22
<b>OPTOMETRY</b>												
Bachelor's	331	0	0	0	0	0	0	0	0	0	0	331
Master's	55	1	2	4	0	1	2	1	1	0	4	71
Doctorates	25	4	2	9	3	1	3	7	-	-	-	54
First Professional	964	39	41	36	40	39	34	39	-	-	-	1,232
Doctor's - Professional Practice	-	-	-	-	-	-	-	-	42	43	36	121
Doctor's - Research/Scholarship	-	-	-	-	-	-	-	-	6	1	3	10
<b>PUBLIC HEALTH <sup>3</sup></b>												
Master's	2,149	93	146	117	130	94	144	126	150	131	108	3,388
Doctorates	139	19	20	20	15	18	21	21	-	-	-	273
Doctor's - Professional Practice	-	-	-	-	-	-	-	-	10	8	4	22
Doctor's - Research/Scholarship	-	-	-	-	-	-	-	-	10	7	17	34
<b>SOCIAL AND BEHAVIORAL SCIENCES</b>												
Bachelor's	7,793	402	403	394	419	416	450	471	-	-	-	10,748
Master's	1,014	51	49	49	46	43	55	37	-	-	-	1,344
Doctorates	136	13	3	12	11	16	13	12	-	-	-	216
<b>TOTAL UAB</b>												
Certificates	9,823	40	55	23	58	33	35	27	37	40	45	10,216
Bachelor's	41,875	1,464	1,575	1,622	1,677	1,814	1,907	1,916	1,921	1,997	1,986	59,754
Master's	25,159	1,060	1,065	1,223	1,098	960	1,098	1,075	1,297	1,389	1,483	36,907
Postmaster's	1,803	60	37	50	59	29	28	20	42	36	64	2,228
Doctorates	2,029	155	111	138	143	192	197	186	-	-	-	3,151
First Professional	7,605	250	257	258	261	249	245	256	-	-	-	9,381
Doctor's - Professional Practice	-	-	-	-	-	-	-	-	358	375	391	1,124
Doctor's - Research/Scholarship	-	-	-	-	-	-	-	-	129	153	174	456
Doctor's - Other	-	-	-	-	-	-	-	-	0	0	0	0
<b>GRAND TOTAL</b>	88,294	3,029	3,100	3,314	3,296	3,277	3,510	3,480	3,784	3,990	4,143	123,217

Note: Federal definitions of doctoral degree categories changed in 2009-10.

<sup>1</sup> The federal reporting period for completions is July 1 through June 30.

<sup>2</sup> The Ph.D. degrees awarded in the Administration/Health Services program are awarded jointly by the Schools of Business and Health Professions.

<sup>3</sup> Prior to 1980-81, degrees in Public Health were earned in the School of Health Professions.

Source: HEGIS Degrees and Other Formal Awards Conferred and IPEDS Completions Reports

## UAB DEGREES CONFERRED JULY 1, 1969 - JUNE 30, 2012

<b>Year*</b>	<b>Bachelor's</b>	<b>Master's</b>	<b>Post Master's</b>	<b>Doctor's</b>	<b>D.M.D., M.D., O.D.</b>	<b>Certificates</b>	<b>Total</b>
1969-70	328	16	0	5	127	68	544
1970-71	498	93	0	18	122	42	773
1971-72	625	197	0	11	136	165	1,134
1972-73	821	346	17	19	150	142	1,495
1973-74	926	459	48	18	178	172	1,801
1974-75	957	610	130	17	317	503	2,534
1975-76	1,041	891	199	8	204	572	2,915
1976-77	1,138	861	162	26	174	438	2,799
1977-78	1,156	783	134	18	211	511	2,813
1978-79	1,180	958	73	21	252	642	3,126
1979-80	1,199	921	134	26	272	774	3,326
1980-81	1,289	928	90	30	285	483	3,105
1981-82	1,195	823	75	28	281	331	2,733
1982-83	1,200	753	51	40	266	373	2,683
1983-84	1,348	605	50	49	254	366	2,672
1984-85	1,379	608	49	41	244	381	2,702
1985-86	1,379	652	52	32	247	346	2,708
1986-87	1,347	625	53	41	237	375	2,678
1987-88	1,406	701	31	54	238	298	2,728
1988-89	1,313	846	20	75	222	266	2,742
1989-90	1,332	804	28	65	233	380	2,842
1990-91	1,324	971	20	95	244	413	3,067
1991-92	1,487	848	34	88	229	430	3,116
1992-93	1,604	842	19	108	243	435	3,251
1993-94	1,582	859	17	107	238	467	3,270
1994-95	1,610	869	58	97	255	292	3,181
1995-96	1,556	940	62	126	252	21	2,957
1996-97	1,720	1,087	49	139	256	20	3,271
1997-98	1,581	998	26	142	241	20	3,008
1998-99	1,528	1,055	34	114	252	21	3,004
1999-2000	1,562	1,051	25	125	254	24	3,041
2000-01	1,646	1,075	31	121	246	25	3,144
2001-02	1,618	1,084	32	125	245	27	3,131
2002-03	1,464	1,060	60	155	250	40	3,029
2003-04	1,575	1,065	37	111	257	55	3,100
2004-05	1,622	1,223	50	138	258	23	3,314
2005-06	1,677	1,098	59	143	261	58	3,296
2006-07	1,814	960	29	192	249	33	3,277
2007-08	1,907	1,098	28	197	245	35	3,510
2008-09	1,916	1,075	20	186	256	27	3,480
2009-10	1,921	1,297	42	229	258	37	3,784
2010-11	1,997	1,389	36	267	261	40	3,990
2011-12	1,986	1,483	64	286	279	45	4,143
Totals Awarded through 2011-12	59,754	36,907	2,228	3,933	10,179	10,216	123,217

\*The federal reporting period for completions is July 1 through June 30.

Source: HEGIS Degrees and Other Formal Awards Conferred and IPEDS Completions Reports

**DOCTOR'S DEGREES CONFERRED BY CATEGORY**  
**JULY 1, 2009 - JUNE 30, 2012**

Starting with 2009-10 completions, the U.S. Department of Education divided the classification of doctoral degrees into the following categories.

<u>Year<sup>1</sup></u>	<u>Doctor's - Professional Practice<sup>2</sup></u>	<u>Doctor's - Research/ Scholarship<sup>3</sup></u>	<u>Doctor's - Other<sup>4</sup></u>	<u>Total</u>
2009-10	358	129	0	487
2010-11	375	153	0	528
2011-12	391	174	0	565

<sup>1</sup>The federal reporting period for completions is July 1 through June 30.

<sup>2</sup>Doctor's degree - professional practice - A doctor's degree that is conferred upon completion of a program providing the knowledge and skills for the recognition, credential, or license required for professional practice. The degree is awarded after a period of study such that the total time to the degree, including both pre-professional and professional preparation, equals at least six full-time equivalent academic years. Some of these degrees were formerly classified as "first-professional." At UAB, this category includes the following degrees: D.M.D., D.N.P., D.P.T., Dr.P.H., D.Sc.P.T, Ed.D., M.D., O.D.

<sup>3</sup>Doctor's degree - research/scholarship - A Ph.D. or other doctor's degree that requires advanced work beyond the master's level, including the preparation and defense of a dissertation based on original research, or the planning and execution of an original project demonstrating substantial artistic or scholarly achievement. At UAB, this category includes the Ph.D.

<sup>4</sup>Doctor's degree - other - A doctor's degree that does not meet the definition of a doctor's degree - research/scholarship or a doctor's degree - professional practice. At UAB, this category includes the D.Sc.

Source: IPEDS Completions Reports

**UAB REQUIRED STUDENT TUITION AND FEES<sup>1</sup>**  
**FALL 2012**

	<u>Resident Charge</u>	<u>Non-Resident Charge</u>
<b><u>Undergraduate Programs:</u></b>		
<i>Undergraduate Courses offered in</i>		
<b>Arts &amp; Sciences, Business, Education, and Engineering</b>		
1st semester hour of coursework	\$462	\$823
Each additional semester hour of coursework	\$267	\$628
<b>Health Professions, Nursing, and Public Health</b>		
1st semester hour of coursework	\$513	\$941
Each additional semester hour of coursework	\$318	\$746
<b>Dental Assisting Program (tuition per semester)</b>	\$2,133	\$4,769
<i>Campus Dining Fee (per semester)<sup>2</sup></i>	\$225	\$225
<b><u>Graduate Programs:</u></b>		
<i>Graduate Courses offered in</i>		
<b>Arts &amp; Sciences, Business, Education, Engineering, and the Graduate School</b>		
1st semester hour of coursework	\$530	\$983
Each additional semester hour of coursework	\$335	\$788
<b>Health Professions</b>		
1st semester hour of coursework	\$626	\$1,208
Each additional semester hour of coursework	\$431	\$1,013
<b>Nursing</b>		
1st semester hour of coursework	\$626	\$1,208
Each additional semester hour of coursework	\$431	\$1,013
<b>Public Health</b>		
1st semester hour of coursework	\$541	\$1,007
Each additional semester hour of coursework	\$346	\$812
<b>Joint Health Sciences</b>		
1st semester hour of coursework	\$517	\$952
Each additional semester hour of coursework	\$322	\$757
<b>Medicine</b>		
General Tuition (annual charge)	\$23,014	\$58,590
<b>Dentistry</b>		
General Tuition - Years 1 & 2 (per semester)	\$11,242	\$27,380
General Tuition - Year 3 (per semester)	\$11,803	\$28,842
General Tuition - Year 4 (per semester)	\$12,919	\$31,770
<b>Optometry</b>		
General Tuition (per term)	\$7,626	\$17,140

<sup>1</sup> Includes Board-approved tuition and fees only.

<sup>2</sup> The campus dining fee is charged to undergraduates enrolling for 12 hours or more per semester during the fall and spring terms.

**UAB STUDENT AID FUNDS AVAILABLE  
2005-06 through 2011-12**

	<b>2005-06</b>	<b>2006-07</b>	<b>2007-08</b>	<b>2008-09</b>	<b>2009-10</b>	<b>2010-11</b>	<b>2011-12</b>
College Work Study	\$1,392,367	\$1,118,982	\$944,373	\$1,070,321	\$1,243,111	\$1,247,203	\$1,260,458
Federal Perkins Loan	2,168,764	3,347,479	2,682,902	2,473,383	1,196,042	1,944,084	2,067,983
Supplemental Educational Opportunity Grant	821,815	1,122,538	1,102,610	896,912	810,611	691,649	618,871
Pell Grants	9,020,274	8,672,087	8,864,686	9,468,517	14,670,953	17,931,072	17,418,363
Health Professional Loans	260,661	544,648	911,117	496,293	670,802	331,412	190,220
Institutional Funds*	44,226,337	48,090,000	52,688,888	53,641,463	54,259,575	55,611,155	55,233,876
Scholarship Funds	20,034,882	22,390,573	27,309,310	27,947,746	27,305,095	29,289,690	29,525,802
Institutional Employment	24,191,455	25,699,427	25,379,578	25,693,717	26,954,480	26,321,465	25,708,074
State Funds**	402,205	380,219	1,340,798	746,343	751,474	748,485	653,396
Private Funds	7,195,179	7,364,071	6,890,048	6,815,506	6,046,878	6,428,163	6,991,118
Other Government Grants	125,500	457,877	263,065	401,037	439,671	691,324	272,400
Federal Direct Loans	72,639,912	70,890,070	82,837,408	96,212,682	109,639,266	122,043,795	130,634,856
Federal Direct Subsidized Loan (need-based)	32,893,739	30,972,823	33,347,655	34,682,720	38,333,178	43,651,572	47,122,970
Federal Direct Unsubsidized Loan (non-need)	34,906,925	34,163,439	43,722,083	56,033,017	63,456,289	68,088,525	72,114,861
Federal Direct Parent Loan (PLUS) (non-need)	4,839,248	5,753,808	3,769,860	2,629,645	3,578,535	4,280,525	4,658,134
Federal Direct Grad PLUS (non-need)			1,997,810	2,867,300	4,271,264	6,023,100	6,738,891
<b>Total Funds</b>	<b>\$138,253,014</b>	<b>\$141,987,971</b>	<b>\$158,525,895</b>	<b>\$172,222,457</b>	<b>\$189,728,383</b>	<b>\$207,668,342</b>	<b>\$215,341,541</b>
<b>Percent Change from Previous Year</b>	<b>+8%</b>	<b>+3%</b>	<b>+12%</b>	<b>+9%</b>	<b>+10%</b>	<b>+9%</b>	<b>+4%</b>
<b>Unduplicated Number of Recipients</b>	<b>11,412</b>	<b>11,391</b>	<b>11,334</b>	<b>11,576</b>	<b>13,271</b>	<b>14,025</b>	<b>14,383</b>
<b>Percent Change from Previous Year</b>	<b>-1%</b>	<b>0%</b>	<b>-1%</b>	<b>2%</b>	<b>15%</b>	<b>6%</b>	<b>3%</b>
<b>Unduplicated Number of Applicants</b>	<b>18,711</b>	<b>16,495</b>	<b>15,797</b>	<b>16,948</b>	<b>19,663</b>	<b>22,976</b>	<b>24,480</b>
<b>Percent Change from Previous Year</b>	<b>9%</b>	<b>-12%</b>	<b>-4%</b>	<b>7%</b>	<b>16%</b>	<b>17%</b>	<b>7%</b>

\*Includes institutional employment.

\*\*Includes state funded scholarships awarded to UAB students in Dentistry, Medicine, and Optometry.

Note: Data is for federal years, July through June.

Sources: Office of Financial Aid, Office of Human Resource Management Information Systems

# **FACULTY AND STAFF**

# UAB WORK FORCE FY 2012-13\*

Organizational Area	Full-time		Part-time		Total		Grand Total
	Men	Women	Men	Women	Men	Women	
University	3,264	4,344	1,523	2,193	4,787	6,537	11,324
Hospital	1,801	4,640	239	1,242	2,040	5,882	7,922
<b>TOTAL</b>	<b>5,065</b>	<b>8,984</b>	<b>1,762</b>	<b>3,435</b>	<b>6,827</b>	<b>12,419</b>	<b>19,246</b>

Job Category	Full-time		Part-time		Total		Grand Total
	Men	Women	Men	Women	Men	Women	
Executive/Administrative	172	160	3	4	175	164	339
Faculty**	1,301	852	90	79	1,391	931	2,322
Professional Nonfaculty	2,161	4,598	616	1,452	2,777	6,050	8,827
Secretarial/Clerical	172	1,544	739	1,335	911	2,879	3,790
Technical/Paraprofessional	517	920	153	244	670	1,164	1,834
Service Maintenance	412	902	140	313	552	1,215	1,767
Skilled Crafts	330	8	21	8	351	16	367
<b>TOTAL</b>	<b>5,065</b>	<b>8,984</b>	<b>1,762</b>	<b>3,435</b>	<b>6,827</b>	<b>12,419</b>	<b>19,246</b>

Job Category	Nonres. Alien	Hispanic/ Latino	American Indian/ Alaska Nat.	Asian	Black/ African American	Native Haw./ Other Pac. Islander	White	Two or More Races	Total
Executive/Administrative	2	3	0	1	44	1	286	2	339
Faculty**	58	69	3	319	135	0	1,734	4	2,322
Professional Nonfaculty	593	100	15	487	1,463	10	6,116	43	8,827
Secretarial/Clerical	44	39	10	81	1,787	7	1,797	25	3,790
Technical/Paraprofessional	17	20	5	39	734	0	1,012	7	1,834
Service Maintenance	1	8	1	5	1,428	1	312	11	1,767
Skilled Crafts	0	0	1	2	109	1	253	1	367
<b>TOTAL</b>	<b>715</b>	<b>239</b>	<b>35</b>	<b>934</b>	<b>5,700</b>	<b>20</b>	<b>11,510</b>	<b>93</b>	<b>19,246</b>

\*These figures include student workers, graduate assistants, hospital residents, postdoctoral employees, and adjunct instructors.

\*\*Employees who also have faculty appointments are included in their primary occupational classification.

Source: Office of Human Resource Management Data Systems, data as of October 31, 2012



**UAB WORK FORCE BY AREA, STATUS, GENDER, AND JOB CATEGORY\***  
**2006-07 through 2012-13**

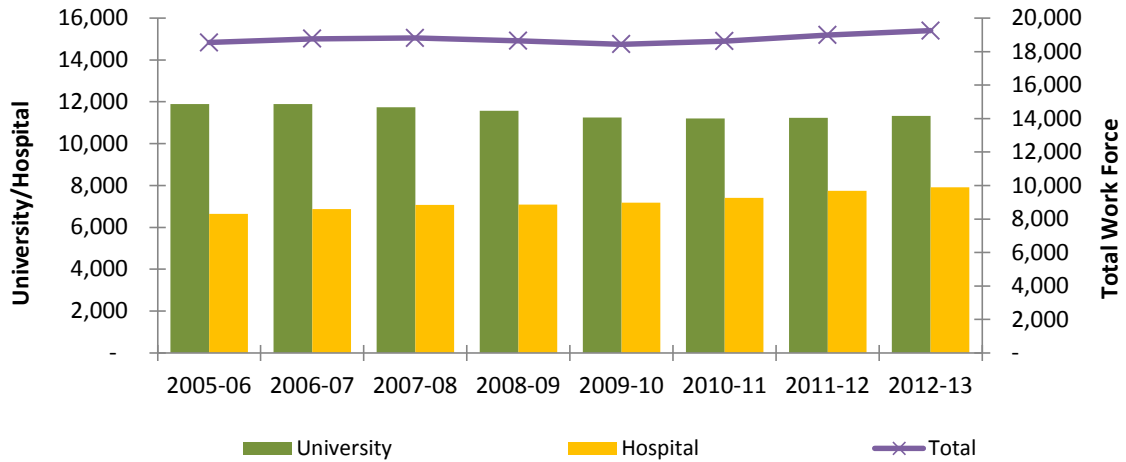
	<b>2006-07</b>	<b>2007-08</b>	<b>2008-09</b>	<b>2009-10</b>	<b>2010-11</b>	<b>2011-12</b>	<b>2012-13</b>
<b>By Area</b>							
University	11,895	11,739	11,564	11,257	11,210	11,240	11,324
Hospital	6,870	7,069	7,086	7,182	7,409	7,744	7,922
Total	18,765	18,808	18,650	18,439	18,619	18,984	19,246
<b>By Status</b>							
Full-time	13,423	13,608	13,722	13,562	13,689	13,865	14,049
Part-time	5,342	5,200	4,928	4,877	4,930	5,119	5,197
Total	18,765	18,808	18,650	18,439	18,619	18,984	19,246
<b>By Gender</b>							
Men	6,521	6,640	6,661	6,554	6,593	6,683	6,827
Women	12,244	12,168	11,989	11,885	12,026	12,301	12,419
Total	18,765	18,808	18,650	18,439	18,619	18,984	19,246
<b>By Job Category</b>							
Executive/Administrative	294	334	340	345	318	326	339
Faculty**	2,212	2,248	2,249	2,224	2,244	2,289	2,322
Professional Nonfaculty	7,722	7,981	8,069	8,265	8,467	8,673	8,827
Secretarial/Clerical	4,707	4,446	4,246	3,807	3,751	3,765	3,790
Technical/Paraprofessional	1,665	1,648	1,621	1,670	1,767	1,779	1,834
Service Maintenance	1,799	1,770	1,750	1,762	1,707	1,776	1,767
Skilled Crafts	366	381	375	366	365	376	367
Total	18,765	18,808	18,650	18,439	18,619	18,984	19,246

\*Figures include student workers, graduate assistants, hospital residents, postdoctoral employees, and adjunct instructors.

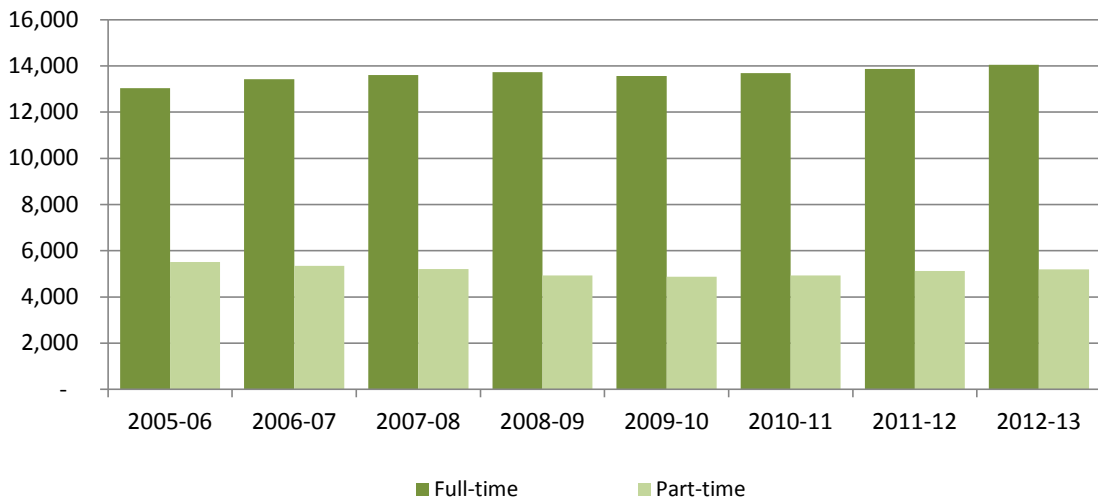
\*\*\*Employees who also have faculty appointments are included in their primary occupational classification.

Source: Office of Human Resource Management Data Systems, data as of October of each year

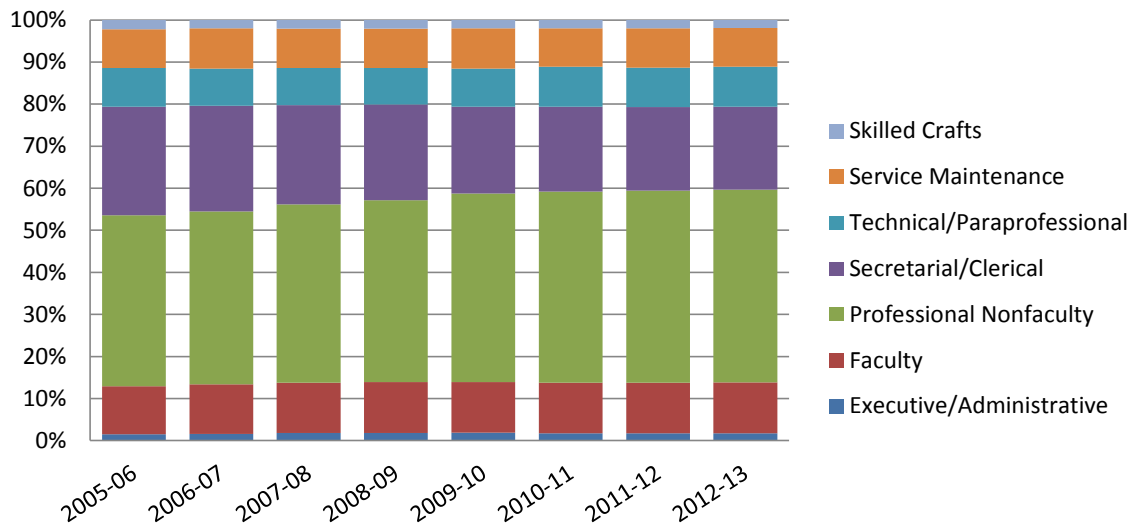
### UAB WORK FORCE BY AREA 2005-06 through 2012-13



### UAB WORK FORCE BY STATUS 2005-06 through 2012-13



### UAB WORK FORCE BY EEO CATEGORY 2005-06 through 2012-13



## UAB FULL-TIME WORK FORCE AND PAYROLL 2002-2012

### FULL-TIME WORK FORCE

<u>Year</u>	<u>Full-time Nonfaculty</u>	<u>Full-time Faculty</u>	<u>Total Full-time Work Force</u>	<u>Change from Previous Year</u>
2002	10,768	1,881	12,649	4.9%
2003	11,011	1,933	12,944	2.3%
2004	10,948	1,899	12,847	-0.7%
2005	11,067	1,961	13,028	1.4%
2006	11,374	2,049	13,423	3.0%
2007	11,515	2,093	13,608	1.4%
2008	11,632	2,090	13,722	0.8%
2009	11,495	2,067	13,562	-1.2%
2010	11,599	2,090	13,689	0.9%
2011	11,754	2,111	13,865	1.3%
2012	11,896	2,153	14,049	1.3%

Source: Office of Human Resources Management Information Systems, Compliance Statistics as of October of each year

### PAYROLL

<u>Year</u>	<u>Payroll</u>	<u>Change from Previous Year</u>	
		<u>Amount</u>	<u>Percent</u>
2002	\$618,950,006	\$28,931,719	4.9%
2003	\$664,308,102	\$45,358,096	7.3%
2004	\$693,791,536	\$29,483,434	4.4%
2005	\$734,493,856	\$40,702,320	5.9%
2006	\$774,113,881	\$39,620,025	5.4%
2007	\$821,085,544	\$46,971,663	6.1%
2008	\$853,066,214	\$31,980,670	3.9%
2009	\$850,911,750	-\$2,154,464	-0.3%
2010	\$858,084,412	\$7,172,662	0.8%
2011	\$899,288,707	\$41,204,295	4.8%
2012	\$940,152,494	\$40,863,787	4.5%

Source: UAB Payroll Department Calendar Year Total (does not include fringe benefits)

**UAB FULL-TIME FACULTY\* BY RANK, GENDER, AND TENURE STATUS  
FALL 2012**

<b>Academic Unit</b>	<b>MEN</b>		<b>WOMEN</b>		<b>TOTAL</b>	
	<b>Number</b>	<b>Tenured</b>	<b>Number</b>	<b>Tenured</b>	<b>Number</b>	<b>Tenured</b>
<b>ARTS AND SCIENCES (excluding Education)</b>						
Professor	60	59	17	17	77	76
Associate	52	46	30	25	82	71
Assistant	55	0	43	1	98	1
Instructor	7	0	11	0	18	0
Other	0	0	0	0	0	0
<b>TOTAL</b>	<b>174</b>	<b>105</b>	<b>101</b>	<b>43</b>	<b>275</b>	<b>148</b>
<b>BUSINESS</b>						
Professor	14	13	2	1	16	14
Associate	9	8	7	6	16	14
Assistant	10	0	5	0	15	0
Instructor	9	0	3	0	12	0
Other	0	0	0	0	0	0
<b>TOTAL</b>	<b>42</b>	<b>21</b>	<b>17</b>	<b>7</b>	<b>59</b>	<b>28</b>
<b>DENTISTRY</b>						
Professor	18	16	3	2	21	18
Associate	12	4	8	1	20	5
Assistant	9	0	9	0	18	0
Instructor	1	0	2	0	3	0
Other	0	0	0	0	0	0
<b>TOTAL</b>	<b>40</b>	<b>20</b>	<b>22</b>	<b>3</b>	<b>62</b>	<b>23</b>
<b>EDUCATION</b>						
Professor	3	3	7	6	10	9
Associate	10	9	19	18	29	27
Assistant	6	0	9	0	15	0
Instructor	0	0	4	0	4	0
Other	0	0	0	0	0	0
<b>TOTAL</b>	<b>19</b>	<b>12</b>	<b>39</b>	<b>24</b>	<b>58</b>	<b>36</b>
<b>ENGINEERING</b>						
Professor	22	17	4	4	26	21
Associate	17	12	4	2	21	14
Assistant	12	0	2	0	14	0
Instructor	2	0	1	0	3	0
Other	0	0	0	0	0	0
<b>TOTAL</b>	<b>53</b>	<b>29</b>	<b>11</b>	<b>6</b>	<b>64</b>	<b>35</b>
<b>HEALTH PROFESSIONS</b>						
Professor	16	14	9	9	25	23
Associate	11	6	13	9	24	15
Assistant	16	0	26	0	42	0
Instructor	1	0	3	0	4	0
Other	0	0	0	0	0	0
<b>TOTAL</b>	<b>44</b>	<b>20</b>	<b>51</b>	<b>18</b>	<b>95</b>	<b>38</b>

\*Figures include employees with full-time regular faculty appointments.

# **UAB FULL-TIME FACULTY\* (CONTINUED)**

<b>Academic Unit</b>	<b>MEN</b>		<b>WOMEN</b>		<b>TOTAL</b>	
	<b>Number</b>	<b>Tenured</b>	<b>Number</b>	<b>Tenured</b>	<b>Number</b>	<b>Tenured</b>
<b>JOINT HEALTH SCIENCES</b>						
Professor	82	75	20	16	102	91
Associate	31	25	27	14	58	39
Assistant	47	0	22	0	69	0
Instructor	9	0	2	0	11	0
Other	0	0	0	0	0	0
<b>TOTAL</b>	<b>169</b>	<b>100</b>	<b>71</b>	<b>30</b>	<b>240</b>	<b>130</b>
<b>MEDICINE</b>						
Professor	245	188	64	44	309	232
Associate	156	43	99	26	255	69
Assistant	220	0	170	1	390	1
Instructor	11	0	15	0	26	0
Other	0	0	0	0	0	0
<b>TOTAL</b>	<b>632</b>	<b>231</b>	<b>348</b>	<b>71</b>	<b>980</b>	<b>302</b>
<b>NURSING</b>						
Professor	1	1	14	9	15	10
Associate	2	2	11	3	13	5
Assistant	3	0	29	1	32	1
Instructor	4	0	42	0	46	0
Other	0	0	0	0	0	0
<b>TOTAL</b>	<b>10</b>	<b>3</b>	<b>96</b>	<b>13</b>	<b>106</b>	<b>16</b>
<b>OPTOMETRY</b>						
Professor	12	12	2	0	14	12
Associate	12	7	8	2	20	9
Assistant	2	0	5	0	7	0
Instructor	1	0	1	0	2	0
Other	0	0	0	0	0	0
<b>TOTAL</b>	<b>27</b>	<b>19</b>	<b>16</b>	<b>2</b>	<b>43</b>	<b>21</b>
<b>PUBLIC HEALTH</b>						
Professor	19	15	12	8	31	23
Associate	10	7	13	10	23	17
Assistant	9	1	16	0	25	1
Instructor	0	0	0	0	0	0
Other	0	0	0	0	0	0
<b>TOTAL</b>	<b>38</b>	<b>23</b>	<b>41</b>	<b>18</b>	<b>79</b>	<b>41</b>
<b>LISTER HILL LIBRARY OF THE HEALTH SCIENCES</b>						
Professor	1	0	0	0	1	0
Associate	2	0	7	0	9	0
Assistant	3	0	5	0	8	0
Instructor	0	0	1	0	1	0
Other	0	0	0	0	0	0
<b>TOTAL</b>	<b>6</b>	<b>0</b>	<b>13</b>	<b>0</b>	<b>19</b>	<b>0</b>

\*Figures include employees with full-time regular faculty appointments.

# **UAB FULL-TIME FACULTY\* (CONTINUED)**

<u>Academic Unit</u>	<u>MEN</u>		<u>WOMEN</u>		<u>TOTAL</u>	
	<u>Number</u>	<u>Tenured</u>	<u>Number</u>	<u>Tenured</u>	<u>Number</u>	<u>Tenured</u>
<b>MERVYN H. STERNE LIBRARY</b>						
Professor	0	0	0	0	0	0
Associate	0	0	0	0	0	0
Assistant	0	0	0	0	0	0
Instructor	0	0	0	0	0	0
Other	5	0	12	0	17	0
<b>TOTAL</b>	<b>5</b>	<b>0</b>	<b>12</b>	<b>0</b>	<b>17</b>	<b>0</b>
<b>UAB TOTAL</b>						
Professor	493	413	154	116	647	529
Associate	324	169	246	116	570	285
Assistant	392	1	341	3	733	4
Instructor	45	0	85	0	130	0
Other	5	0	12	0	17	0
<b>TOTAL</b>	<b>1,259</b>	<b>583</b>	<b>838</b>	<b>235</b>	<b>2,097</b>	<b>818</b>

\*Figures include employees with full-time regular faculty appointments.

Source: UAB Office of Human Resource Management Information Systems, as of October 2012

**HIGHEST DEGREES OF UAB FULL-TIME FACULTY\***  
**BY SCHOOL AND RANK - FALL 2012**

<b>Academic Unit</b>	<b>Academic or Professional Doctorate</b>	<b>Master's</b>	<b>Bachelor's/ Other</b>	<b>Total</b>
<b>ARTS AND SCIENCES</b>				
Professor	69	8	0	77
Associate	75	7	0	82
Assistant	75	21	2	98
Instructor	5	11	2	18
Other	0	0	0	0
<b>TOTAL</b>	<b>224</b>	<b>47</b>	<b>4</b>	<b>275</b>
<b>BUSINESS</b>				
Professor	16	0	0	16
Associate	16	0	0	16
Assistant	15	0	0	15
Instructor	3	9	0	12
Other	0	0	0	0
<b>TOTAL</b>	<b>50</b>	<b>9</b>	<b>0</b>	<b>59</b>
<b>DENTISTRY</b>				
Professor	21	0	0	21
Associate	20	0	0	20
Assistant	18	0	0	18
Instructor	3	0	0	3
Other	0	0	0	0
<b>TOTAL</b>	<b>62</b>	<b>0</b>	<b>0</b>	<b>62</b>
<b>EDUCATION</b>				
Professor	10	0	0	10
Associate	29	0	0	29
Assistant	15	0	0	15
Instructor	1	3	0	4
Other	0	0	0	0
<b>TOTAL</b>	<b>55</b>	<b>3</b>	<b>0</b>	<b>58</b>
<b>ENGINEERING</b>				
Professor	26	0	0	26
Associate	20	1	0	21
Assistant	11	3	0	14
Instructor	0	3	0	3
Other	0	0	0	0
<b>TOTAL</b>	<b>57</b>	<b>7</b>	<b>0</b>	<b>64</b>
<b>HEALTH PROFESSIONS</b>				
Professor	25	0	0	25
Associate	19	5	0	24
Assistant	20	22	0	42
Instructor	0	4	0	4
Other	0	0	0	0
<b>TOTAL</b>	<b>64</b>	<b>31</b>	<b>0</b>	<b>95</b>

\*Figures include employees with full-time regular faculty appointments.

## HIGHEST DEGREES OF UAB FULL-TIME FACULTY\* (CONTINUED)

<u>Academic Unit</u>	<u>Academic or Professional Doctorate</u>	<u>Master's</u>	<u>Bachelor's/ Other</u>	<u>Total</u>
<b>JOINT HEALTH SCIENCES</b>				
Professor	102	0	0	102
Associate	58	0	0	58
Assistant	66	2	1	69
Instructor	11	0	0	11
Other	0	0	0	0
TOTAL	237	2	1	240
<b>MEDICINE</b>				
Professor	309	0	0	309
Associate	252	2	1	255
Assistant	382	7	1	390
Instructor	20	4	2	26
Other	0	0	0	0
TOTAL	963	13	4	980
<b>NURSING</b>				
Professor	15	0	0	15
Associate	13	0	0	13
Assistant	30	2	0	32
Instructor	12	33	1	46
Other	0	0	0	0
TOTAL	70	35	1	106
<b>OPTOMETRY</b>				
Professor	14	0	0	14
Associate	20	0	0	20
Assistant	7	0	0	7
Instructor	2	0	0	2
Other	0	0	0	0
TOTAL	43	0	0	43
<b>PUBLIC HEALTH</b>				
Professor	31	0	0	31
Associate	23	0	0	23
Assistant	25	0	0	25
Instructor	0	0	0	0
Other	0	0	0	0
TOTAL	79	0	0	79
<b>LISTER HILL LIBRARY OF THE HEALTH SCIENCES</b>				
Professor	0	1	0	1
Associate	0	9	0	9
Assistant	0	8	0	8
Instructor	0	1	0	1
Other	0	0	0	0
TOTAL	0	19	0	19

\*Figures include employees with full-time regular faculty appointments.



## HIGHEST DEGREES OF UAB FULL-TIME FACULTY\* (CONTINUED)

<u>Academic Unit</u>	<u>Academic or Professional Doctorate</u>	<u>Master's</u>	<u>Bachelor's/ Other</u>	<u>Total</u>
<b>MERVYN H. STERNE LIBRARY</b>				
Professor	0	0	0	0
Associate	0	0	0	0
Assistant	0	0	0	0
Instructor	0	0	0	0
Other	3	14	0	17
TOTAL	3	14	0	17
<b>UAB TOTAL</b>				
Professor	638	9	0	647
Associate	545	24	1	570
Assistant	664	65	4	733
Instructor	57	68	5	130
Other	3	14	0	17
TOTAL	1,907	180	10	2,097

\*Figures include employees with full-time regular faculty appointments.

Source: UAB Office of Human Resource Management Information Systems, as of October 2012

## ENDOWED POSITIONS AT UAB

Charles S. Ackerman Endowed Professorship in Neurology (2010)  
Maurice S. Albin, M.D. Endowed Professorship in Anesthesiology (2005)  
Charles A. Alford, M.D. Endowed Chair in Pediatric Infectious Diseases (2001)  
Hilda B. Anderson Endowed Chair in Nephrology (2011)  
Robert and Ruth Anderson Endowed Chair in Pathology (2006)  
Anderson Family Endowed Chair in Medical Education, Research and Patient Care (2007)  
Thomas E. Andreoli Professorship in Nephrology (2001)  
The Arthritis Foundation, Alabama Chapter Endowed Chair in Pediatric Rheumatology (2007)  
J. Max Austin Jr., M.D. Endowed Chair in Gynecologic Oncology (2008)  
converted from Professorship (2000) to Chair (2008)  
Baker-Dean Endowed Professorship in Interventional Cardiology (2000)  
Donna Brown Banton Endowed Professorship in Nursing (2005)  
George W. Barber Jr. Foundation Professorship in Otolaryngology/Head and Neck Surgery (1993)  
Lionel M. Barger Jr., M.D. Chair in Pediatric Cardiology (1996)  
J. Claude Bennett, M.D. Endowed Professorship in Rheumatology and Immunology (2012)  
Bergman/Pinkston Endowed Professorship in Physical Therapy (2007)  
John H. Blue Chair of General Surgery (2001)  
Rachel Z. Booth Endowed Chair in Nursing (1997)  
Mary J. Bradford Endowed Professorship in Gastroenterology (1998)  
Ben Vaughan Branscomb Chair of Medicine in Respiratory Disease (1990)  
Anton J. Bueschen, M.D. Endowed Chair in Urologic Surgery and Research (2006)  
Wallace R. Bunn Chair in Telecommunications (1992)  
C. E. Butterworth Jr., M.D. Professorship in the Department of Nutrition Sciences (1996)  
Benjamin Monroe Carraway, M.D. Endowed Chair in Anesthesiology (1997)  
Dr. William C. Carter Endowed Professorship in French and Proust Studies (2011)  
David Hill Chestnut Endowed Professorship in Anesthesiology (2013)  
Neil E. Christopher, M.D. Endowed Professorship in Family and Community Medicine (2001)  
Charles A. and Patsy W. Collat Endowed Chair in Neurosurgery (2006)  
converted from Professorship (2005) to Chair (2006)  
Sir David Cox Endowed Professorship in Biostatistics (2010)  
Ellen Gregg Shook Culverhouse Chair in Gynecologic Oncology (1998)  
Dental Alumni – Joseph F. Volker Chair of Clinical Dentistry (1982)  
Arnold G. Diethelm Endowed Chair in Transplantation Surgery (2004)  
William E. Dismukes Endowed Professorship in Infectious Diseases (2008)  
Edwin M. Dixon Endowed Chair in Neonatology (2000)  
E. A. and Abbie Drummond Endowed Chair in Cardiovascular Medicine (2013)  
converted from Professorship (2011) to Chair (2013)  
Heman E. Drummond Endowed Chair of Psychiatry (1988)  
James E. Elder, M.D. Endowed Professorship for Graduate Education (2012)  
Eminent Scholar Chair in Pulmonary Diseases (1989)  
Endowed Chair in Developmental Psychology (2006)  
Endowed Professorship in Cancer Pathobiology (2012)  
Endowed Professorship in Diabetes Prevention and Control (2013)  
Endowed Professorship in Experimental Cancer Therapeutics (2012)  
Endowed Professorship in Mitochondrial Medicine and Pathology (2011)  
Endowed Professorship in Polar or Marine Biology (2001)

## ENDOWED POSITIONS AT UAB (CONTINUED)

Endowed Professorship in Pulmonary Vascular Disease (2013)  
Endowed Professorship in Transplant Nephrology (2001)  
Edward A. Ernst, M.D. Endowed Professorship in Anesthesiology (2001)  
James H. Estes Family Endowed Chair for Lung Cancer Research (2009)  
EyeSight Foundation of Alabama Endowed Chair of Ophthalmology (1999)  
Featheringill Endowed Chair for Cardiac Arrhythmia Research (2011)  
converted from Professorship (2006) to Chair (2011)  
Wayne H. and Sara Crews Finley Chair of Medical Genetics (1986)  
Charles E. Flowers Jr. Endowed Chair of Obstetrics and Gynecology (2002)  
converted from Professorship (1985) to Chair (2002)  
James Garber Galbraith Chair in Neurosurgery (1992)  
Simon Gelman, M.D., Ph.D. Endowed Professorship in Anesthesiology (2001)  
Geropsychiatry Research Chair (1993)  
J. W. and Virginia Goodwin - Warren D. Blackburn Jr. Research Chair in Rheumatology (1993)  
Hazel Gore, M.D. Endowed Professorship in Gynecologic Pathology (2011)  
William "Student" Sealy Gosset Endowed Professorship in Biostatistics (2008)  
Jeanne and Ann Griffin Chair for Women's Cancer Research (1997)  
Nancy R. and Eugene C. Gwaltney Family Endowed Chair in Medical Research (2003)  
Nancy R. and Eugene C. Gwaltney Family Endowed Chair in Juvenile Diabetes Research (2007)  
Alfred Habeeb Chair in Anesthesiology (1992)  
Ruth Lawson Hanson Chair of Medicine in Diabetes and Metabolism (1967)  
Joy and Bill Harbert Endowed Chair in Cancer Genetics (2001)  
Marguerite Jones Harbert – Gene V. Ball, M.D. Endowed Chair in Rheumatology (2006)  
Bruce Harris Jr., M.D. Endowed Professorship in Obstetrics and Gynecology (1999)  
Elmer and Glenda Harris Endowed Chair in Cardiovascular Disease (2004)  
Dr. Tinsley R. Harrison Endowed Chair in Medical Resident Education (2011)  
converted from Professorship (2002) to Chair (2011)  
Griffith R. Harsh Endowed Chair in Neurosurgery (2009)  
converted from Professorship (2006) to Chair (2009)  
Wyatt and Susan Haskell Endowed Professorship for Medical Excellence (2007)  
James P. Hayes Jr. Endowed Professorship in Gastrointestinal Oncology (2012)  
James Johnston Hicks Chair of Otolaryngology/Head and Neck Surgery (1989)  
Julius N. Hicks Endowed Chair in Otolaryngology/Head and Neck Surgery (2005)  
S. Richardson Hill Jr. Professorship in Endocrinology (1988)  
Thomas P. Hinman Dental Meeting Endowed Professorship in Comprehensive Dentistry (2012)  
Basil I. Hirschowitz Endowed Chair in Gastroenterology (1996)  
converted from Professorship (1988) to Chair (1996)  
Charles and Alice Hohenberg Professorship in Pulmonary and Critical Care Medicine (1996)  
Howard L. Holley Research Chair in Rheumatology (1987)  
Marie S. Ingalls Endowed Chair in Nephrology Leadership (2006)  
converted from Professorship (2001) to Chair (2006)  
Charles Byron Ireland Chair of Psychiatric Research (1973)  
Katharine Reynolds Ireland Chair of Pediatrics (1992)  
Fay B. Ireland Endowed Chair for the Dean of the School of Nursing (2011)  
Kathy Ireland Chair in Psychiatric Research (1992)  
John S. Jemison Jr. Visiting Professorship in the Humanities (1986)  
Dr. Thomas W. Jones Endowed Professorship in Oral and Maxillofacial Surgery (2012)  
L. R. Jordan Chair in Health Services Administration (1988)

## ENDOWED POSITIONS AT UAB (CONTINUED)

John A. and Ruth R. Jurenko Endowed Professorship in Neurology (2013)  
Fay Fletcher Kerner Chair of Surgery (1973)  
converted from Professorship (1964) to Chair (1973)  
Eleanor E. Kidd Endowed Chair in Primary Care Medicine (2007)  
converted from Professorship (2003) to Chair (2007)  
Robert Y. Kim Outstanding Educator Endowed Chair in Radiation Oncology (2007)  
F. Cleveland Kinney Endowed Chair in Geriatric Psychiatry (2007)  
James K. Kirklin Endowed Chair of Cardiothoracic Surgery (2010)  
John W. Kirklin Chair of Cardiovascular Surgery (1980)  
William J. Koopman, M.D. Endowed Professorship in Immunology and Rheumatology (2013)  
Robert B. Kyle Professorship and Chair in Rehabilitation Medicine (1974)  
Lakeshore Foundation Endowed Chair in Health Promotion and Rehabilitation Sciences (2012)  
James C. and Elizabeth T. Lee Chair in Biochemistry (1993)  
James C. Lee Jr. Endowed Chair for the Dean of the School of Medicine (2011)  
William A. Lell, M.D. – Paul N. Samuelson, M.D. Endowed Professorship in Anesthesiology (2003)  
Patrick H. Linton Professorship of Psychiatry (1987)  
Albert F. LoBuglio Endowed Chair for Translational Cancer Research (2006)  
Loeb Eminent Scholar Chair in Pediatrics (1992)  
Jarman F. Lowder Endowed Professorship in Neuroscience (2012)  
Jane Knight Lowe Chair of Medicine in Rheumatology (2001)  
converted from Professorship (1986) to Chair (2001)  
Dr. Champ Lyons Endowed Chair in General Surgery (1997)  
Caldwell Marks Endowed Chair in Cancer Oncology (2005)  
Jeanne V. Marks Endowed Chair in Cardiovascular Research (1999)  
Alma B. Maxwell – UAHSF Endowed Chair in Biomedical Research (2008)  
Martha Ann and David L. May Endowed Chair in Cancer Research (1999)  
Charles A. McCallum Chair of Oral and Maxillofacial Surgery (1985)  
Charles H. McCauley Chair of Microbiology (1978)  
Jay M. McDonald, M.D. Endowed Professorship in Bone Pathobiology (2010)  
Holt A. McDowell Jr., M.D. Endowed Chair of Vascular Surgery (2007)  
Evelyn F. McKnight Endowed Chair for Learning and Memory in Aging (2006)  
converted from Professorship (2004) to Chair (2006)  
Alice McNeal, M.D. Endowed Chair in Anesthesiology (1998)  
Gwen McWhorter Endowed Chair in Geriatric Medicine (2002)  
Ruby F. Meredith Outstanding Clinician Radiation Oncology Endowed Chair (2007)  
converted from Professorship (2004) to Chair (2007)  
Nathan E. Miles Endowed Chair of Ophthalmology (1996)  
Robert W. Mowry, M.D. Endowed Professorship in Pathology (2008)  
John S. Odess Chair in Otolaryngology/Head and Neck Surgery (1993)  
Marie L. O'Koren Endowed Chair in Nursing (1992)  
O'Neal-Sokol Breast Cancer Research Foundation of Alabama Endowed Professorship (2012)  
A. D. Pacifico, M.D. Endowed Chair of Cardiovascular Surgery (2002)  
Quetelet Endowed Professorship in Public Health (2012)  
Emmett G. and Beverly S. Parrish Endowed Professorship (2001)  
Department of Radiology Visiting Professor Endowment Fund (1989)  
Bee McWane Reid Endowed Professorship in Psychiatry (2012)  
ROAR Southeast Cancer Foundation Endowed Professorship in Radiation Oncology (2013)  
Leonard H. Robinson Endowed Chair in Pathology (1998)

## ENDOWED POSITIONS AT UAB (CONTINUED)

James R. Rosen Chair in Dental Research (1990)  
 Merle M. Salter Chair of Radiation Oncology (1995)  
 John D. Sherrill Chair of Orthopaedic Surgery (1970)  
 Elesabeth Ridgely Shook Endowed Chair in Psychiatry (2001)  
 J. Marion Sims Endowed Chair in Obstetrics and Gynecology (1985)  
 Margaret Cameron Spain Chair in Obstetrics and Gynecology (1998)  
 Spencer Chair in Medical Science Leadership (1992)  
 Evalina B. Spencer Chair in Oncology (1994)  
 Virginia B. Spencer Endowed Professorship in Neuroscience (2012)  
 John T. and Juanelle D. Strain Endowed Chair in Neurology (2006)  
 Jim Straley Endowed Chair in AIDS Research (2007)  
 Tate Jordan Thomas Professorship in Psychiatric Medicine (1994)  
 Transplant Nephrology Clinical Research Professorship (2001)  
 UAB Alumni and Friends Professorship in Accounting (1990)  
 UAB Cardiovascular Surgical Research Chair (2004)  
     converted from Professorship (1980) to Chair (2004)  
 UAB Orthodontic Alumni Endowed Professorship (2011)  
 UAHSF Endowed Chair in Biomedical Research (2008)  
     converted from Professorship (2005) to Chair (2008)  
 Warren Family Endowed Chair in Neurology (2013)  
     converted from Professorship (2012) to Chair (2013)  
 Anna Lois Waters Chair of Medicine in Rheumatology (1970)  
 Mary Gertrude Waters Chair of Cardiovascular Medicine (1972)  
 Newman H. Waters Chair of Clinical Pharmacology (1992)  
 Webb Chair in Nutrition Sciences (2001)  
 Ben S. Weil Chair of Industrial Distribution (1986)  
 Virginia Loeb Weil Endowed Professorship in Medical Education (2013)  
 Wells Fargo Endowed Chair in Business Administration (2006)  
     converted from Professorship (2004) to Chair (2006)  
 John N. Whitaker Endowed Chair in Neurology (2005)  
     converted from Professorship (2003) to Chair (2005)  
 Witten-Stanley Endowed Chair in Radiology (1997)  
 Women's Committee of the Spain Rehabilitation Center Endowed Chair in Rehabilitation  
     Neuroscience Research (2006)  
 J. Benjamin Younger, M.D. Endowed Professorship in Reproductive Endocrinology and Infertility  
     (2000)

## TOTAL FULLY FUNDED ENDOWED POSITIONS

Chairs	102
Professorships	56
Total	158

Note: Date in parentheses is the year established. A listing of current holders of each endowed position can be found at the bottom of the sidebar on the website of the UAB Development Office:  
<http://www.uab.edu/development/waystogive/endowments>

Source: Minutes, the Board of Trustees of the University of Alabama; campus records

## **UAB FACULTY AWARDS AND HONORS**

### **SPECIAL PROFESSORSHIPS AND APPOINTMENTS**

#### **Distinguished Professors**

David B. Allison, Ph.D. (2010-present)  
Samuel B. Barker, Ph.D. (1976-2002)  
J. Claude Bennett, M.D. (1996-emeritus, 1996)  
Ben Vaughan Branscomb, M.D. (1989-emeritus, 1989)  
William C. Carter, Ph.D. (2004-emeritus, 2009)  
William C. Cockerham, Ph.D. (2005-present)  
Harriet P. Dustan, M.D. (1985-emerita, 1988)  
Charles E. Flowers Jr., M.D. (1985-emeritus, 1985)  
Walter B. Frommeyer, M.D. (1968-1979)  
Tinsley R. Harrison, M.D. (1964-1978)  
S. Richardson Hill Jr., M.D. (1987-emeritus, 1994-2003)  
Thomas N. James, M.D. (1981-1987-emeritus, 2005)  
William J. Koopman, M.D. (2005-emeritus, 2005)  
Albert F. LoBuglio, M.D. (2005-present)  
Champ Lyons, M.D. (1964-1965)  
Sadis Matalon, Ph.D. (2013-present)  
Charles A. McCallum, D.M.D., M.D. (1993-emeritus, 1998)  
Raymond A. Mohl, Ph.D. (2005-present)  
Navin C. Nanda, M.D. (2011-present)  
Jimmy D. Neill, Ph.D. (1994-emeritus, 2004)  
Shin J. Oh, M.D. (2007-present)  
James A. Pittman Jr., M.D. (1992-emeritus, 1992)  
Sergio Stagno, M.D. (2010-present)  
Joseph F. Volker, D.D.S., Ph.D. (1982-1989)  
Richard J. Whitley, M.D. (2009-present)

#### **Distinguished Service Professors**

Joseph H. Appleton, Ph.D.; Civil Engineering (1984-emeritus, 1990)  
Milly Cowles, Ph.D.; Education (1987-emerita, 1989)  
Jay Goldman, D.Sc.; Engineering (2001-present)  
Fain A. Guthrie, Ed.D.; Education (1980-emeritus, 1988)  
Maryann M. Manning, Ed.D.; Education (2007-emerita, 2007)  
George E. Passey, Ph.D.; Psychology (1985-emeritus, 1985)  
J. Dudley Pewitt, D.B.A.; Business (1990-1994)  
Elizabeth Stullenbarger, D.S.N.; Nursing (2010-emerita, 2011)

#### **University Professors**

Karlene K. Ball, Ph.D.; Developmental Psychology (2009-present)  
Frederick W. Conner, Ph.D.; Humanities (1976-emeritus, 1978)  
Kent T. Keyser, Ph.D.; Optometry (2013-present)  
Jennifer L. Kilgo, Ed.D.; Early Childhood Special Education (2013-present)  
Jack E. Lemons, Ph.D.; Prosthodontics (2009-present)  
James B. McClintock, Ph.D.; Polar and Marine Biology (2003-present)  
Dalton E. McFarland, Ph.D.; Management (1972-emeritus, 1983)  
Sergey B. Mirov, Ph.D.; Physics (2010-present)  
Henry Panion, Ph.D.; Music (2000-present)  
James Rachels, Ph.D.; Philosophy (1983-2003)  
Craig T. Ramey, Ph.D.; Psychology (1997-2002)  
Edward Taub, Ph.D.; Psychology (2000-present)

## UAB FACULTY AWARDS AND HONORS (CONTINUED)

### University Scholars

William F. Bridgers, M.D.; Public Health (1991-1992)  
W. Jack Duncan, Ph.D.; Management (1987-2008)  
Virginia V. Hamilton, Ph.D.; History (1981-emerita, 1987)  
David E. Harrell, Ph.D.; History (1976-1981; 1985-1990)  
Jimmy W. Mays, Ph.D.; Chemistry (2001)  
David L. Sparks, Ph.D.; Psychology (1976-1981)  
James F. Tent, Ph.D.; History (1990-emeritus, 2010)  
Yogesh K. Vohra, Ph.D.; Physics (2001-present)

Dates shown represent date of appointment and/or departure from UAB.

## NATIONAL RECOGNITIONS

### Fulbright Scholars

1965-67	Abdullah A. Khatri - Psychology
1977-78	Blaine A. Brownell - American and Urban Studies
	Henry N. McCarl - Economics
1981-82	Ruth B. LaMonte - Education
	J. Walter Mason - Environmental Health
1982-83	Daniel R. Lesnick - History
	Eul Soo Pang - History
1983-84	Thomas L. St. Pierre - Chemistry
1985-86	Kathleen S. Logan - Anthropology
	James F. Mersmann - English
	Bruce P. Wheatley - Anthropology
1986-87	W. Jack Duncan - Management
	John D. Jones - Student Affairs
	Charles W. Nance - Anthropology
	Larry G. Wharton - English
1987-88	Ralph A. Johnson - Center for Labor Education and Research
	Mohammed A. Khaled - Nutrition Sciences
1989-90	Thomas L. Powers - Marketing
	Frederick P. Smith - Criminal Justice
1990-91	Richard M. Gargiulo - Special Education
1991-92	Jane M. Christian - Anthropology
	Stephen O. Glosecki - English
1992-93	Bruce Freeman - Anesthesiology
1993-94	Beverly Hawk - Political Science
	Virginia D. Gauld - Student Affairs
1994-95	Roger T. Lewis - Mathematics
1995-96	Voytek Zubek - Political Science
1995-97	Mary Umlauf - Nursing
1996-97	Tee Hiatt - Health Services Administration
1997-98	Robert A. McLean - Health Administration
1999-00	Paul Pedersen - Education
2002-03	Jack E. Davis - History
2003-04	Lynda Harrison - Nursing
2004-05	John Van Sant - History
	Mohammad A. Khaled - Nutrition Sciences
2006-07	Douglas C. Heimbarger - Nutrition Sciences
2007-08	Akhlaque Haque - Public Administration
2011-12	David Schwebel - Psychology (Specialist Award)
2011-12	Chandrika Piyathilake - Medical Sciences

## UAB FACULTY AWARDS AND HONORS (CONTINUED)

### DISTINGUISHED FACULTY LECTURERS

1964	Dr. Tinsley R. Harrison, Professor of Medicine
1965	Dr. Champ Lyons, Professor and Chairman, Department of Medicine
1966	Dr. Joseph F. Volker, Vice President for Health Affairs
1967	Dr. Thomas E. Hunt, Professor of Anatomy
1968	Dr. Samuel B. Barker, Director of Graduate Studies
1969	Dr. Howard L. Holley, Professor of Medicine
1970	Dr. Sidney B. Finn, Professor of Dentistry
1971	Dr. Walter B. Frommeyer, Distinguished Professor, University of Alabama
1972	Dr. Charles A. McCallum, Dean, School of Dentistry
1973	Dr. J. Garber Galbraith, Professor of Surgery
1974	Dr. Elizabeth C. Crosby, Professor Emerita of Anatomy
1975	Dr. John W. Kirklin, Fay Fletcher Kerner Professor and Chairman, Department of Surgery
1976	Dr. S. Richardson Hill Jr., Vice President for Health Affairs
1977	Dr. Thomas N. James, Mary Gertrude Waters Professor of Cardiology and Chairman, Department of Medicine
1978	Dr. Marie L. O'Koren, Dean, School of Nursing
1979	Dr. J. Claude Bennett, Professor and Chairman, Department of Microbiology
1980	Dr. John R. Durant, Director, Comprehensive Cancer Center
1981	Dr. James A. Pittman Jr., Dean, School of Medicine
1982	Dr. Max D. Cooper, Professor of Pediatrics
1983	Drs. Wayne and Sara Finley, Director and Co-Director, Laboratory of Medical Genetics
1984	Dr. Harriet P. Dustan, Director, Cardiovascular Research and Training Center
1985	Dr. Leonard H. Robinson, Dean, School of Dentistry
1986	Dr. C. E. Butterworth, Professor and Chairman, Department of Nutrition Sciences
1987	Dr. Dan W. Urry, Director, Laboratory of Molecular Biophysics
1988	Dr. Basil I. Hirschowitz, Professor of Medicine
1989	Dr. Harold M. Fullmer, Professor Emeritus of Pathology
1990	Dr. Juan M. Navia, Dean, School of Public Health
1991	Dr. Lionel M. Barger Jr., Professor Emeritus of Pediatric Cardiology
1992	Dr. Jiri F. Mestecky, Professor of Microbiology
1993	Dr. Charles E. Bugg, Director, Center for Macromolecular Crystallography
1994	Dr. Arnold G. Diethelm, Fay Fletcher Kerner Professor and Chair, Department of Surgery
1995	Dr. Albert F. LoBuglio, Director, UAB Cancer Center
1996	Dr. Gail H. Cassell, Professor and Chair, Department of Microbiology
1997	Dr. Suzanne Oparil, Professor of Medicine
1998	Dr. Richard J. Whitley, Professor of Pediatrics, Microbiology, and Medicine
1999	Dr. Albert D. Pacifico, John W. Kirklin Professor of Cardiovascular Surgery
2000	Dr. Larry J. DeLucas, Director, UAB Center for Biophysical Sciences and Engineering
2001	Dr. Robert L. Goldenberg, Charles E. Flowers Professor of Obstetrics and Gynecology
2002	Dr. Eric Hunter, Director, Center for AIDS Research
2003	Dr. J. Russell Lindsey, Professor Emeritus of Genomics and Pathobiology
2004	Dr. William J. Koopman, Professor and Chairman, Department of Medicine
2005	Dr. Jay M. McDonald, Professor and Chairman, Department of Pathology
2006	Dr. Jack Lemons, Professor, Department of Prosthodontics
2007	Dr. Dale J. Benos, Professor, Department of Physiology and Biophysics
2008	Dr. Robert P. Kimberly, Professor, Department of Medicine
2009	Dr. Suzanne Michalek, Professor, Department of Microbiology
2010	Dr. Edward E. Partridge, Professor, School of Medicine
2011	Dr. David B. Allison, Professor, School of Public Health
2012	Dr. Stephen Barnes, Professor, Pharmacology and Toxicology

Academic or administrative appointment shown for each lecturer is the primary appointment held at the time of selection as Distinguished Faculty Lecturer.

Source: UAB Public Relations and Marketing



## UAB FACULTY AWARDS AND HONORS (CONTINUED)

### ELLEN GREGG INGALLS / NATIONAL ALUMNI SOCIETY AWARD FOR EXCELLENCE IN CLASSROOM TEACHING AT UAB

1969-70	Dr. Hubert H. Harper, Associate Professor of English and Classical Languages
1970-71	Ms. Charlotte Gafford, Instructor in English
1971-72	Dr. Hubert H. Harper, Associate Professor of English and Classical Languages
1972-73	Mr. James Dupuy, Instructor in Mathematics
1973-74	Dr. Robert L. Penny, Assistant Professor of English
1974-75	Dr. Glenda Elliott, Assistant Professor of Education
1975-76	Dr. John S. Coley, Professor of English
1976-77	Dr. Roberta A. Long, Associate Professor of Education
1977-78	Dr. Maryann M. Manning, Associate Professor of Education
1978-79	Dr. Gary L. Manning, Associate Professor of Education
1979-80	Dr. Carl E. McFarland Jr., Assistant Professor of Psychology
1980-81	Mr. James H. Hawk, Lecturer in Physics
1981-82	Dr. Loudell Ellis-Robinson, Professor of Accounting
1982-83	Ms. Lillian Naumann, Instructor in Biology
1983-84	Dr. David A. Conner, Professor and Chair of Electrical Engineering
1984-85	Dr. Lee R. Summerlin II, Professor of Chemistry
1985-86	Dr. James F. Mersmann, Associate Professor of English
1986-87	Mr. Ollie S. Powers III, Assistant Professor of Accounting
1987-88	Dr. Ada W. Long, Associate Professor of English
1988-89	Dr. J. Barry Andrews, Professor of Materials Science and Engineering
1989-90	Dr. Michael R. Bowers, Assistant Professor of Marketing
1990-91	Dr. Stephen O. Glosecki, Associate Professor of English
1991-92	Dr. Thomas P. Edmonds, Professor of Accounting
1992-93	Dr. Fouad H. Fouad, Associate Professor of Civil Engineering
1993-94	Dr. Gregory E. Pence, Professor of Philosophy
1994-95	Ms. Virginia S. Volker, Instructor in Biology
1995-96	Ms. Judy Taylor, Assistant Professor in Nursing
1996-97	Dr. Colin J. Davis, Associate Professor of History
1997-98	Dr. Carl E. McFarland Jr., Professor and Chair of Psychology
1998-99	Dr. Anne M. Cusic, Instructor in Biology
1999-00	Dr. Jerry T. Aldridge, Professor of Education
2000-01	Dr. Joe K. Gerald, Assistant Professor in Surgical Physician Assistant Program
2001-02	Dr. Maryann M. Manning, Professor of Education
2002-03	Dr. J. Barry Andrews, Professor and Chair of Materials Science and Engineering
2003-04	Mr. Ollie S. Powers III, Associate Professor of Accounting
2004-05	Dr. Ellen Buckner, Associate Professor of Nursing
2005-06	Dr. Sandra Jean O'Neal, Professor and Chair of Prosthodontics
2006-07	Dr. Rosalia N. Scripa, Professor of Engineering
2007-08	Dr. Ferris J. Ritchey, Professor of Sociology
2008-09	Dr. Peter V. Anderson, Professor of Pathology
2009-10	Dr. Charles L. Watkins, Professor of Chemistry
2010-11	Dr. Robin D. Foley, Professor of Engineering
2011-12	Dr. Alan Eberhardt, Professor of Biomedical Engineering

Date shown is the academic year covered by the award. Academic appointment shown for each award winner is the primary appointment held at the time of the award.

Source: UAB Public Relations and Marketing

## UAB FACULTY AWARDS AND HONORS (CONTINUED)

### CAROLYN P. AND CHARLES W. IRELAND PRIZE FOR SCHOLARLY DISTINCTION

1991	Dr. Joan Lorden, Psychology
1992	Dr. James Rachels, Philosophy
1993	Dr. James McClintock, Biology
1994	Dr. James Tent, History
1995	Dr. Roger Lewis, Mathematics
1996	Dr. Henry Panion, Music
1997	Dr. Edward Taub, Psychology
1998	Dr. Harold Kincaid, Philosophy
1999	Dr. Dennis R. Covington, English
2000	Dr. Craig T. Ramey, Civitan International Research Center
2001	Dr. Jimmy W. Mays, Chemistry
2002	Dr. William C. Carter, Foreign Languages and Literature
2003	Dr. Yogesh K. Vohra, Physics
2004	Dr. William C. Cockerham, Sociology
2005	Dr. Raymond A. Mohl, History
2006	Dr. Wayne J. Brouillette, Chemistry
2007	Dr. Stephen A. Watts, Biology
2008	Dr. Karlene K. Ball, Psychology
2009	Dr. Sergey B. Mirov, Physics
2010	Dr. Colin J. Davis, History and Anthropology
2011	Dr. Rebecca Ann Bach, English
2012	Dr. Yakov Kasman, Music

Source: Office of the Vice Provost for Student and Faculty Success

### ODESSA WOOLFOLK COMMUNITY SERVICE AWARD

1998	Dr. Linda W. Goodson
1999	Dr. Susan K. Key
2000	Dr. Ada W. Long
2001	Dr. Michael S. Saag
2002	Dr. Stephen L. Hajduk
2003	Dr. Mark E. LaGory
2004	Dr. Mona Fouad
2005	Dr. Ken R. Marion
2006	Dr. Edward E. Partridge
2007	Dr. Isabel Scarinci
2008	Dr. John Thornton
2009	Dr. Brian Geiger
2010	Dr. Max Michael III
2011	Dr. Tamilane Blaudeau
2012	Dr. Stephen Yoder

Source: Office of the Vice Provost for Student and Faculty Success

# **FINANCIAL AND PHYSICAL RESOURCES**

**SELECTED UAB FINANCIAL HIGHLIGHTS**  
**FY 2009-10 through FY 2011-12**

<b><u>Item</u></b>	<b><u>2009-10</u></b>	<b><u>2010-11</u></b>	<b><u>2011-12</u></b>
Tuition and Fees (gross)	\$ 139,441,181	\$ 161,719,588	\$ 175,184,111
State Appropriations <sup>1</sup>	256,190,587	254,288,538	268,640,355
Gifts, Grants & Contracts <sup>2</sup>	539,762,452	566,122,993	505,447,847
Hospital Sales & Services	1,180,507,891	1,305,829,082	1,431,610,359
Total Revenues	2,686,059,499	2,829,758,575	3,142,615,849
Total Assets	3,325,880,887	3,510,961,175	3,716,837,277
Instructional Expenditures	229,507,507	242,721,730	247,417,710
Hospital Expenditures <sup>3</sup>	1,121,650,366	1,212,461,248	1,327,099,898
Auxiliary Expenditures <sup>4</sup>	32,516,834	402,473,711	466,103,334

**Notes:**

Financial data are based on the published financial statement for that year and do not necessarily reflect subsequent changes in accounting practices.

The information in this table has been modified from similar tables in earlier editions of *Facts & Figures*. Therefore, direct comparisons with earlier tables may not be appropriate.

<sup>1</sup>Includes state appropriations for educational and general (E&G), hospital, and auxiliary enterprises.

<sup>2</sup>Includes indirect cost recovery. Excludes endowment and capital gifts.

<sup>3</sup>Includes bad debt expense as follows: 2009-10 - \$171,617,926; 2010-11 - \$196,167,535; 2011-12 - \$236,995,097.

<sup>4</sup>Data for 2010-11 has been revised to reflect reclassified financial statements to conform to the current year presentation.

Source: Published UAB Financial Statements and the Office of the Associate Vice President for Financial Affairs

# UAB FINANCIAL PROFILE

## FY 2011-12 ACTUAL

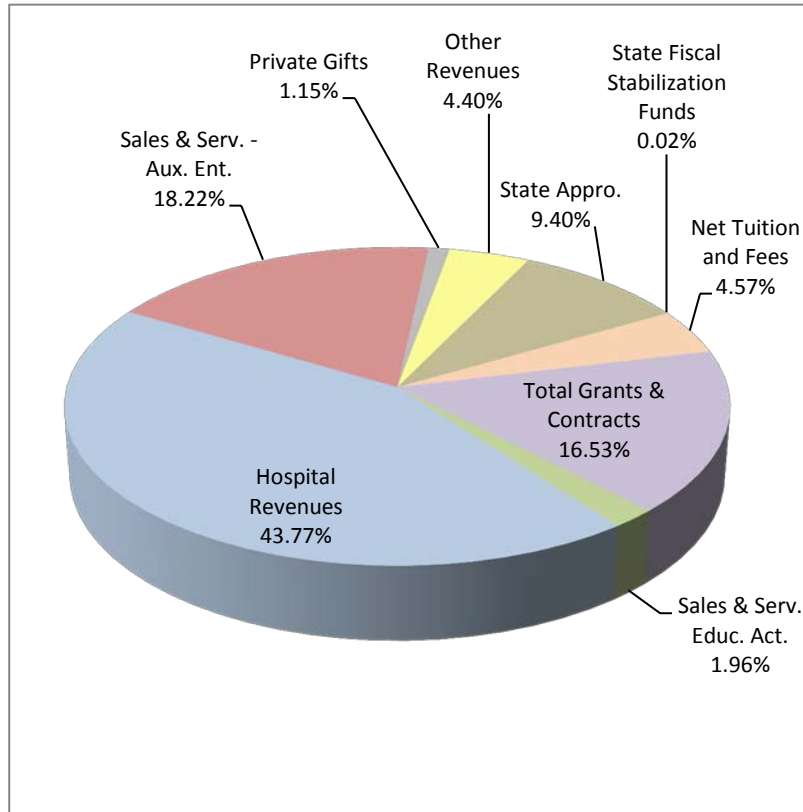
	<b>2012</b>
<b>Operating Revenues</b>	
Tuition and fees	\$ 175,184,111
Less: scholarship allowance	(44,449,656)
Less: bad debt expense	(164,802)
Tuition and fees, net	130,569,653
Grants and contracts:	
Federal	374,459,479
State	6,155,771
Local	314,715
Private	66,026,133
Sales and services:	
Educational activities	55,906,284
Hospital, net of bad debt expense of \$236,995,097	1,194,615,262
Other auxiliary enterprises, net of scholarship allowance of \$2,979,415	520,621,762
Other operating revenues	54,242,888
<b>Total operating revenues</b>	<b>\$ 2,402,911,947</b>
<b>Operating Expenses</b>	
Salaries, wages and benefits	\$ 1,286,871,937
Supplies and services	1,190,679,387
Depreciation and amortization	128,960,636
Scholarships and fellowships	19,158,774
<b>Total operating expenses</b>	<b>\$ 2,625,670,734</b>
<b>Operating loss</b>	<b>\$ (222,758,787)</b>
<b>Nonoperating Revenues (Expenses)</b>	
Gains and losses	
State educational appropriations	\$ 268,640,355
Federal grants and contracts	25,128,105
State grants and contracts	106,859
Private grants and contracts	164,948
State fiscal stabilization funds	534,136
Gifts	33,091,837
Investment income (loss)	128,209,982
Interest expense	(27,942,694)
Loss on asset disposition, net	(786,935)
(Loss) Gain on sale of discontinued operations (Note 1)	(761,290)
Net other nonoperating (expense) revenue	(11,311,594)
<b>Net nonoperating revenues</b>	<b>\$ 415,073,709</b>
<b>Income (Loss) before other revenues, expenses, gains, losses, and transfers</b>	<b>\$ 192,314,922</b>
<b>Other Changes in Net Assets</b>	
Capital and endowment activities	
State capital funds	\$ 11,076,675
Capital grants and contracts	3,150,413
Capital gifts	452,371
Endowment gifts	11,009,611
<b>Net other changes in net assets</b>	<b>\$ 25,689,070</b>
<b>Increase in net assets</b>	<b>\$ 218,003,992</b>

Note: Includes the balances and activities of UAB's blended component units. Please reference the notes to the financial statements for other important information.

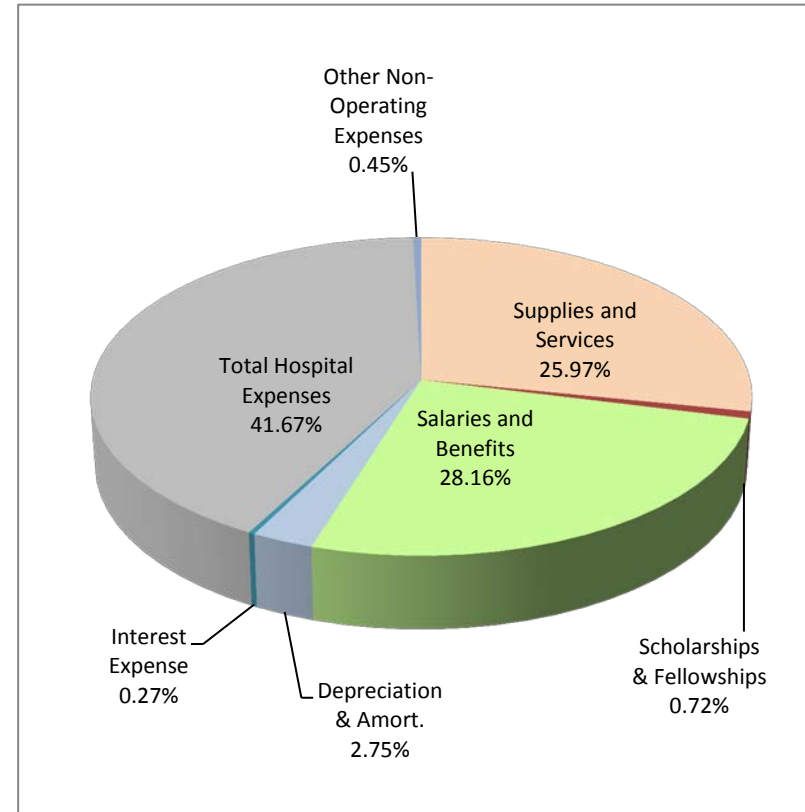
Source: UAB Financial Affairs

## UAB FINANCIAL PROFILE FY 2011-2012 ACTUAL

### Revenues



### Expenses



**Notes:**

Hospital revenues include sales and services revenue, other operating revenues, and investment income.

Other revenues include non-hospital other operating and nonoperating revenues and investment income (loss).

Revenues and expenses include the activities of UAB's Hospital and blended component units [Triton Health Systems, Southern Research Institute and UAB Research Foundation].

Capital and Endowment activities are not included in the above analysis.

Source: Published UAB Financial Statements and the Office of the Associate Vice President for Financial Affairs

**STATE FUNDING  
FROM THE EDUCATIONAL TRUST FUND  
AS ENACTED FY 1967-68 TO FY 2012-13**

<b>Fiscal Year</b>	<b>UAB Request</b>	<b>ACHE Recommendation</b>	<b>Governor's Recommendation</b>	<b>Original Appropriation</b> <sup>1</sup>
2012-13	\$365,285,853	\$283,254,822	\$258,025,709	\$258,386,290 <sup>14</sup>
2011-12	358,941,736	288,042,665	267,016,678	268,566,258 <sup>14</sup>
2010-11	358,811,486	286,048,142	266,509,376	261,894,483 <sup>14,15</sup>
2009-10	362,923,548	359,594,984	282,032,631	282,968,361 <sup>14,15</sup>
2008-09	407,056,000	365,055,735	314,478,004	320,111,373 <sup>14</sup>
2007-08	370,836,760	359,524,170	351,310,338	353,961,485
2006-07	298,725,538	287,673,961	306,972,657	310,661,485
2005-06	259,860,966	254,242,544	254,242,543	260,174,828
2004-05	245,917,325	238,250,286	222,868,737	225,966,057 <sup>12,13</sup>
2003-04	250,965,529	227,114,415	219,688,766	219,773,186 <sup>12</sup>
2002-03	245,322,089	227,260,481	219,019,853	218,230,895 <sup>12</sup>
2001-02 <sup>11</sup>	256,627,315	231,907,993	205,919,985	213,335,122 <sup>12</sup>
2000-01 <sup>11</sup>	228,226,882	224,484,654	219,532,486	219,912,486 <sup>12</sup>
1999-00 <sup>11</sup>	220,240,493	212,400,799	203,248,005	207,478,983
1998-99 <sup>11</sup>	217,954,281	198,359,499	191,112,548	192,564,684
1997-98	197,376,459	195,086,299	182,987,673	183,984,625
1996-97 <sup>10</sup>	216,099,194	191,571,618	159,292,757	182,755,980
1995-96 <sup>8</sup>	196,784,010	179,743,681	145,338,599	182,655,980 <sup>7,9</sup>
1994-95	174,086,656	170,217,281	163,068,408	165,184,208 <sup>7</sup>
1993-94	174,374,421	156,690,187	<sup>2</sup>	146,291,307 <sup>7</sup>
1992-93 <sup>6</sup>	173,166,984	144,241,231	<sup>2</sup>	136,230,017
1991-92 <sup>5</sup>	157,091,034	137,635,377	<sup>2</sup>	140,081,381
1990-91	148,171,566	136,489,897	<sup>2</sup>	128,399,290
1989-90	136,927,929	126,808,097	<sup>2</sup>	115,759,036
1988-89 <sup>4</sup>	127,513,440	113,630,997	<sup>2</sup>	117,179,843
1987-88	122,426,275	102,672,967	97,632,142	98,635,173
1986-87	139,973,045	114,677,669	96,662,640	97,162,640
1985-86	119,191,528	106,927,000	105,138,359	107,388,359
1984-85	101,242,132	93,758,000	86,625,930	87,275,930
1983-84	99,579,000	93,071,000	70,272,751	70,701,053
1982-83	108,721,564	87,329,341	69,952,098	69,676,355
1981-82	104,673,576	83,704,000	62,172,442	63,975,600
1980-81	97,723,505	84,563,800	67,950,000	68,350,000
1979-80	98,497,422	75,784,800	59,970,512	60,170,512
1978-79	79,541,318	62,707,368	61,159,512	59,970,512
1977-78	60,757,369	52,747,352	50,946,789	47,707,789

## STATE FUNDING (CONTINUED)

<b>Fiscal Year</b>	<b>UAB Request</b>	<b>ACHE Recommendation</b>	<b>Governor's Recommendation</b>	<b>Original Appropriation</b>
1976-77	59,314,197	41,144,509	34,093,400	37,057,200
1975-76	36,357,498	30,636,318	34,093,400	38,443,400
1974-75	28,249,988	25,702,448	23,839,507	25,101,220
1973-74	25,336,139	23,399,914	21,742,525	20,403,000
1972-73	27,432,974	<sup>3</sup>	13,035,704	14,673,988
1971-72	22,330,398	-	13,035,704	12,583,000
1970-71	26,371,000	-	10,327,647	8,958,000
1969-70	19,565,000	-	9,567,217	8,095,000
1968-69	9,863,016	-	5,514,236	7,192,342
1967-68	8,940,424	-	5,514,236	5,720,000

<sup>1</sup> Appropriations are shown as originally enacted. Budgets have been prorated as follows: 1978-79 - 2.9811%; 1979-80 - 6.1406%; 1980-81 - 3.568%; 1985-86 - 4.1233%; 1990-91 - 6.5%; 1991-92 - 3%, 2000-01 - 6.2%, 2008-09 - 11.0%, 2009-10 - 9.5%, 2010-11 - 3.0%. In FY 1992-93, UAB received supplemental appropriations totalling \$4,351,070. In FY 2001-02, the appropriation was adjusted to \$212,869,757.

<sup>2</sup> The Governor's Recommendation contained one amount for the University of Alabama System.

<sup>3</sup> The Alabama Commission on Higher Education made its first recommendation in the 1973-75 biennium.

<sup>4</sup> Beginning in FY 1988-89, figures include funding for Special Mental Health. Prior to FY 1988-89, funding for Special Mental Health was allocated separately. Since ACHE does not make a recommendation for Special Mental Health funding, the prior year's appropriation is substituted as the recommendation.

<sup>5</sup> Original Appropriation amount includes FICA. FICA was not included in UAB's request or ACHE's recommendation.

<sup>6</sup> FICA is included in all figures from FY 1992-93 forward.

<sup>7</sup> In FY 1993-94, UAB also received \$100,000 for minority business recruitment and \$300,000 for the Beville Center for Biotechnology. In FY 1994-95 and FY 1995-96, UAB received \$350,000 for the Beville Center.

<sup>8</sup> From FY 1995-96 to FY 1998-99, data include UAB Walker College where appropriate.

<sup>9</sup> Original appropriation includes teachers retirement of \$29,763,321 which was directly appropriated to UAB.

<sup>10</sup> Beginning in FY 1996-97, figures include funding for teachers retirement. Since ACHE did not make a recommendation for teachers' retirement funding in FY 1996-97, the prior year's appropriation is substituted as the recommendation.

<sup>11</sup> In FY 1998-99 and FY 1999-00, UAB also received \$348,735 to fund a teacher in-service center in the School of Education. In FY 2000, the amount was increased to \$351,606. Beginning in FY 2002, teacher in-service centers were funded through the State Department of Education.

<sup>12</sup> UAB also received funding for line items for the Cystic Fibrosis Center (\$200,000) and the Holmes Brain Tumor Research Center (\$200,000) in FY 2000-01. In FY 2001-02 and FY 2002-03, funding for both lines were reduced to \$178,220, and UAB received \$84,420 for the emergency medicine residency program. In FY 2003-04, the lines were cut to \$44,555 and emergency medicine received \$21,105. In FY 2004-05, all funding for these special lines (Cystic Fibrosis Center, Holmes Brain Tumor Research Center, and the Emergency Medicine Residency Program) was cut.

<sup>13</sup> UAB also received funding distributed through ACHE for Knight v AL Minority Faculty Recruitment and Retention in the amount of \$539,525.

<sup>14</sup> The Original Appropriation amount includes a special line of funding for the UAB Cancer Center in the amount of \$5 million for 2007-08 and 2008-09; \$4,516,609 for 2009-10; \$4,177,863 for 2010-11; and \$5,052,527 for 2011-12.

<sup>15</sup> Excludes funding distributions for the state fiscal stabilization funds allocated to Alabama by the American Recovery and Reinvestment Act.

Source: Alabama Commission on Higher Education Unified Budget Recommendations



**UAB SPONSORED PROJECT EXPENDITURES**  
**FY 2006 through FY 2012**

	<b>FY 2006</b>	<b>FY 2007</b>	<b>FY 2008</b>	<b>FY 2009</b>	<b>FY 2010</b>	<b>FY 2011</b>	<b>FY 2012</b>
Arts and Humanities	\$ 56,207	\$ 105,120	\$ 137,889	\$ 36,195	\$ 54,238	\$ -	\$ -
Arts and Sciences	-	-	-	-	-	20,360,294	15,423,805
Business	796,764	636,664	654,233	438,283	(259)	157	113,913
Dentistry	6,225,865	7,022,223	9,364,714	8,500,644	9,194,090	8,633,626	7,818,984
Education	5,358,150	4,084,336	4,262,885	3,835,873	4,134,292	-	2,602,545
Engineering	8,917,178	7,593,069	7,917,860	8,472,820	7,392,475	7,338,009	7,529,291
Graduate School	10,489	279,818	(528)	(15,574)	-	68,533	227,915
Health Professions	6,910,792	6,920,179	7,518,229	8,761,969	9,684,527	9,745,187	9,162,296
Institutional / Provost	16,372,922	34,955,839	13,911,147	9,882,962	5,640,307	6,508,122	3,806,248
Joint Health Sciences	79,957,932	69,956,146	77,252,234	77,810,991	82,927,578	85,182,561	69,754,293
Lister Hill Library	47,486	-	(884)	-	-	1,000	9,961
Medicine	225,144,830	217,508,031	222,036,846	207,461,399	223,866,821	239,897,074	197,524,159
Mervyn Sterne Library	-	-	(1,046)	-	-	-	-
Natural Sciences and Mathematics	9,458,478	10,479,473	11,201,108	11,912,404	12,533,143	-	-
Nursing	2,496,325	1,834,937	2,239,162	3,216,089	4,636,841	4,775,515	4,861,584
Optometry	12,020,148	11,278,503	10,544,430	11,316,991	11,690,429	10,976,473	12,142,446
Public Health	44,625,546	38,542,006	34,706,646	38,117,219	40,929,911	47,427,534	46,181,102
Social and Behavioral Sciences	9,296,234	5,518,132	5,426,049	5,566,881	6,459,233	-	-
<b>Total</b>	<b>\$ 427,695,346</b>	<b>\$ 416,714,476</b>	<b>\$ 407,170,972</b>	<b>\$ 395,315,146</b>	<b>\$ 419,143,625</b>	<b>\$ 440,914,085</b>	<b>\$ 377,158,541</b>

Notes: Includes indirect costs. Negatives represent expenditures from a prior year that were refunded to the sponsored project during the reporting year.

Source: Grants and Contracts Accounting

**SUMMARY OF UAB GRANTS AND CONTRACTS AWARDED  
FY 2012**

	<b>Federal</b>	<b>Industrial</b>	<b>Other Non-Federal</b>	<b>Total</b>	<b>Percent of Total</b>
Arts and Sciences (includes Education)	\$ 12,918,376	\$ 951,363	\$ 4,253,718	\$ 18,123,457	4.78%
Business	0	0	24,000	24,000	0.01%
Dentistry	13,440,562	829,187	478,007	14,747,756	3.89%
Engineering	3,119,532	1,312,538	2,185,126	6,617,196	1.74%
Health Professions	7,916,029	286,900	958,015	9,160,944	2.41%
Joint Health Sciences	49,988,613	1,917,157	9,492,307	61,398,077	16.18%
Medicine	140,101,450	30,880,827	42,938,430	213,920,707	56.39%
Nursing	4,905,595	0	343,644	5,249,239	1.38%
Optometry	8,015,722	347,150	416,226	8,779,098	2.31%
Public Health	29,519,170	4,028,068	6,505,968	40,053,206	10.56%
Central Administration	37,059	67,277	1,214,857	1,319,193	0.35%
<b>UAB TOTAL</b>	<b>\$ 269,962,108</b>	<b>\$ 40,620,467</b>	<b>\$ 68,810,298</b>	<b>\$ 379,392,873</b>	<b>100.00%</b>
<b>Percent of Total</b>	<b>71.16%</b>	<b>10.71%</b>	<b>18.14%</b>	<b>100.00%</b>	

Note: These data were generated from the IRAP grants and contracts computer system.

Source: Office of Sponsored Programs

**UAB BUILDING SUMMARY  
FALL 2012**

<b>Category</b>	<b>Building Name</b>	<b>Gross Square Footage</b>	<b>Construction Completed or Acquired</b>	
<b>Hospital</b>	176 Facility	550,907	2010	
	2020 Building	9,854	1988*	
	502 Building	8,764	2005	
	Center for Psychiatric Medicine	161,863	1992	
	Center for Psychiatric Medicine Parking	25,695	1992	
	General Services Building	52,973	1979	
	General Services Building 3rd, 4th, and 5th Floor Expansion	77,168	1991	
	Hospital Support Building	43,717	2004	
	Jefferson Tower	301,158	1940	
	Jefferson Tower - South Wing Addition	22,800	1970	
	Kracke Building	40,187	1928	
	Medical Education Building	49,865	1977	
	New Hillman Building	62,415	1928	
	North Pavilion (UAB Hospital)	876,625	2004	
	North Wing-Jefferson Tower Addition	122,281	1966	
	Old Hillman Building	46,080	1902	
	Orthopaedic Specialties Building	27,968	2010	
	Physician's Office Building	131,401	2010	
	Quarterback Tower	92,682	1976	
	Russell Ambulatory Wing, University Hospital	93,992	1977	
	Spain & McDonald Clinic	8,786	1990*	
	Spain Rehabilitation Center	65,016	1963	
	Spain Rehabilitation Center - Pizitz Memorial Pool Addition	3,008	1987	
	Spain Rehabilitation Center Addition	35,659	1969	
	Spain Rehabilitation Center Addition II	50,975	1991	
	Spain Tower (South half of Spain/Wallace Building)	127,939	1979	
	Spain Tower 8th and 9th Floor Expansion	37,622	1984	
	Spain Tower Kidney Transplant Unit Expansior	18,243	1982	
	Trash Compactor Facility	2,262	1982	
	Trauma Communications Center	1,731	1960*	
	UAB Highlands	524,021	2010*	
	Wallace Tower (North half of Spain/Wallace Building)	103,418	1979	
	Wallace Tower 7th, 8th, and 9th Floor Expansion	46,404	1984	
	Wallace Tower 8th Floor Expansion	18,878	2011	
	West Pavilion	388,084	1991	
	White Building	3,221	1991*	
<b>Leased</b>	1605 Building	2,879	2007	(R)
	1633 Building	2,915	2007	(R)
	1701 Building	4,372	2005	(R)
	200 Building	19,600	2005	(R)
	2300 Building	19,240	2012	(R)
	725 Building	14,319	1999	(R)
	916 Building	3,816	2011	(R)
	936 Building	32,363	2012	(R)
	Callahan Eye Foundation Hospital	248,739	1988	(R)
	Children's Hospital Ambulatory Care Center	99,025	1994	(R)
	Children's Hospital Harbor Center	63,619	2003	(R)
	Children's Hospital Tower	22,347	1992	(R)
	CIDRZ Lusaka Zambia	8,960	1998	(R)
	Cramer Hall	156	2010	(R)
	Crowne Apartments	10,000	2010	(R)
	Dixie Warehouse	4,123	1995	(R)
	Four Townes Executive Center	1,000	2010	(R)
	Health Clinic (Hoover)	257	2002	(R)
	Health Clinic (Hueytown)	209	2002	(R)
	Health Clinic (Inverness)	3,730	2002	(R)
	Health Clinic (Moody)	275	2002	(R)
	John N. Whitaker Building	13,619	2001	(R)

# UAB BUILDING SUMMARY (CONTINUED)

Category	Building Name	Gross Square Footage	Construction Completed or Acquired	
Leased (Continued)	Kirklin Clinic	21,159	1999	(R)
	Kirklin Clinic Acton Road	1,744	2005	(R)
	Kirklin Clinic Parking Deck	6,037	2001	(R)
	Magnolia Office Park Suite	7,938	2005	(R)
	Medical Towers	124,410	1975	(R)
	Park Place I North	12,124	2010	(R)
	Park Place II North	6,714	2008	(R)
	Paula Building	21,084	2000	(R)
	Radiology Film Storage Building	12,716	1992	(R)
	Railroad Square	20,858	2012	(R)
	Sloss Warehouse	88,697	2011	(R)
	Substance Abuse Center - Bessemer	4,783	1966	(R)
	Substance Abuse Center - Campus	32,714	1993*	(R)
	Vaughan Regional Medical Center (Selma)	22,750	2005	(R)
	Veterans' Affairs Medical Center	3,447	1990	(R)
	Watts Tower	3,800	2010	(R)
Parking	10th Avenue Parking Deck	146,308	1981*	
	12th Street Parking Deck	224,916	2004	
	16th Street Parking Deck	470,425	2006	
	19th Street Parking Deck	195,369	1970	
	19th Street Parking Deck Expansion	101,220	1991	
	5th Avenue Parking Deck	258,260	2000	
	6th Avenue Park Deck Addition	179,386	2003	
	6th Avenue Parking Deck	414,210	1982	
	9th Avenue Parking Deck	218,960	1996	
	Administration Building Parking Deck	130,752	1994*	
	University Boulevard Parking Deck	258,807	1987	
	Highland's Parking Deck	177,465	2010*	
University	1200 Building (Food Fair Southern Family Markets)	22,776	2007	
	1715 Building	1,650	1986 *	
	501 Building	59,474	2001*	
	508 Building	25,781	2009*	(N)
	516 Building	4,584	2000	
	526 Building	3,528	1993	
	616 Building	9,128	2006*	
	711 Building	5,416	1971*	
	820 Building	7,260	2006*	
	822 Building	8,775	2006*	
	912 Building	25,455	2001	
	9th Avenue Office Building	5,650	2003	
	Administration Building	195,119	1993*	
	Alumni Building	14,481	2010	
	Alys Robinson Stephens Performing Arts Center	115,465	1996	
	Alys Robinson Stephens Performing Arts Center Addition	1,932	2004	
	Bartow Arena	167,677	1988	
	Bartow Arena Office Towers	18,988	1992	
	Bell Building	47,339	1955	
	Bevill Biomedical Sciences Research Building	223,712	1993	
	Biomedical Research Building II	96,598	2002	
	Birmingham Regional Emerg. Medical Services System (BREMSS)	4,157	1985*	
	Blazer Hall II (Student Residence)			(D)
	Blount Hall (Student Residence)			(D)
	Boshell Diabetes Education and Research Building	128,544	1973	
	Bridges (Enclosed)	47,055	NA	
	Burleson Building	9,623	1988*	
	Business and Engineering Complex	138,841	1983	
	Camp Hall (Student Residence)	156,763	1980	
	Campbell Hall	103,089	1978	
	Campbell Hall 3rd and 4th Floor Expansion	101,898	1991	
	Campus Recreation Center	154,623	2005	
	Cancer Research Center	38,075	1982	

## UAB BUILDING SUMMARY (CONTINUED)

Category	Building Name	Gross Square Footage	Construction Completed or Acquired	
University (Continued)	Center for Biophysical Sciences and Engineering	58,290	1989*	
	Center for Biophysical Sciences and Engineering Addition	19,373	2001	
	Center for Nuclear Imaging Research	14,481	1986	
	Center for Research in Women's Health	25,587	2001	
	Central Laundry Building	35,464	1986	
	Central Utility No. 1 and Addition	22,333	1971	
	Central Utility No. 3 and Addition	27,558	1991	
	Central Utility No. 5	22,659	2004	
	Chauncey Sparks Center	111,489	1969	
	Chemistry Annex	7,694	1978	
	Chemistry Building	44,093	1972	
	Chemistry Building 3rd Floor Addition	22,447	2005	
	Chevron Building	48,167	1989*	
	Civitan International Research Center	59,165	1992	
	Community Care Building	59,562	1991*	
	Community Health Services - 19th	87,860	1981*	
	Community Health Services - 20th	66,331	1979*	
	Cook Springs Farm (5 Buildings)	17,411	1980*	
	Cudworth Building	48,273	1963	
	Denman Hall (Student Residence)	68,839	1973	
	Dowdy Building	2,623	1971*	
	Education Building	110,417	1971	
	Education Building Parking	32,930	1971	
	Engel Day Treatment Center	4,895	1970	
	Engel Day Treatment Center Addition	15,828	1975	
	Facilities Administration Annex No. 1	3,166	1994*	
	Facilities Administration Building	24,590	1994*	
	Facilities Training Center	1,919	1995	
	Faculty Office Tower	102,731	2003	
	Fleet Operations Center	1,302	1989*	(N)
	Hansell/Hulsey Center Addition	6,182	2004	(N)
	Hansell/Hulsey Center for Arts and Humanities	52,395	1981	
	Henry Peters Building	78,192	1975	
	Henry Peters Building Parking	27,302	1975	(N)
	Heritage Hall Building	99,660	2007	
	Hill University Center	138,926	1983	
	Hill University Center - Auto Tellers	625	1984	
	Hoehn Engineering Building	36,384	1986	
	Hoehn Engineering Building Addition	3,178	1997	
	Holley-Mears Building	10,968	1978*	
	Humanities Building	64,172	1972	
	Huntsville - UAB Regional Medical Health Center	94,713	2003	
	Johnson House (1006 19th Street South)	11,373	1985*	
	Kaul Human Genetics Building	160,117	2001	
	Learning Resources Center	79,332	1970	
	Lister Hill Library	49,125	1971	
	Lister Hill Library Addition	88,547	1996	
	Lister Hill Parking	13,224	1971	
	Lyons-Harrison Research Building	92,868	1959	
	Lyons-Harrison Research Building Addition	43,302	1966	
	Marshall Conference Center	3,264	1973*	
	McCallum Basic Health Science Education and Research Facility	174,884	1986	
	Morningside Drive	2,900	1995*	
	Motor Pool (Storage)	6,032	1972*	
	OADI Technology Center	68,496	1997	
	Obstetrics Special Care	18,322	1983*	
	Pittman Center for Advanced Medical Studies	7,140	1980	
	Police Headquarters Building	12,713	1992*	
	Police Support Building	3,957	1971*	
	Rast Hall (Student Residence)	129,168	1990	
	Research Support Building	103,321	2006	
	Rust Center Parking	53,751	1969	
	Rust Computer Center	24,523	1969	

## UAB BUILDING SUMMARY (CONTINUED)

Category	Building Name	Gross Square Footage	Construction Completed or Acquired	
University (Continued)	Ryals Public Health Building (Floors 1 & 2)	40,989	1996	
	Ryals Public Health Building (Floors 3 & 4)	36,971	1998	
	Ryals Public Health Building (Floors 5 & 6)	37,476	2000	
	Samuel Ullman Museum	5,426	1993*	
	Scene Shop	6,908	1975*	(N)
	School of Dentistry Building	109,625	1951	(N)
	School of Dentistry Building Addition	51,897	1975	(N)
	School of Dentistry Building Storage Addition	1,272	1976	(N)
	School of Dentistry Clinic	43,264	1951	(N)
	School of Health Professions	76,644	2001	(N)
	School of Nursing Additional Space	3,216	2007	(N)
	School of Nursing Building	77,946	1971	(N)
	School of Nursing Parking	37,813	1971	(N)
	School of Nursing West Addition	6,523	1992	
	Shelby Interdisciplinary Biomedical Research Building	320,791	2006	
	Smolian International House	9,472	1992	
	Smolian Psychiatric Clinic	22,358	1960	
	Sorority Square Building	9,018	1989*	
	Southeastern Bio-Safety Lab	48,164	2008	
	Spencer Honors House	9,231	1903*	
	Sterne Library	79,385	1973	
	Sterne Library Addition	90,371	1987	
	Tinsley Harrison Tower	131,657	1984	
	Town House	106,820	1985*	
	UAB Child Care Center	6,213	1993	
	UAB Fast Pitch Softball Field	2,244	2010	
	Ullman Boiler Building	5,261	1978	
	Ullman Building	29,474	1910	
	Ullman Building West Addition	20,414	1950	
	University Boulevard Office Building	36,105	2005	
	University Dining Facility (The Commons)	28,177	2006	(L)(N)
	University Place Apartments	86,552	1986*	
	Volker Hall	397,374	1971	
	Volker Hall Basement Addition	35,626	1996	
	Volker Hall Instructional Addition	65,529	2003	
	Volker Hall Parking	13,144	1971	
	Wallace Physical Education Facility	52,653	1974	
	Wallace Tumor Institute	73,211	1976	
	Wallace Tumor Institute 4th, 5th, and 6th Floor Expansion	74,272	1992	
	Wallace Tumor Institute NMR Addition	11,830	1985	
	WBHM	4,510	1971	
	WBHM Addition	2,640	1980	
	Webb Nutrition Sciences Building	71,443	1983	
	Woodward Estate (3 Buildings)	31,339	1971*	
	Worrell Building	37,484	1986*	
	Worrell Building Addition	4,968	2002	
	Young Memorial Field Building	2,458	1984	
	Zeigler Research Center	114,915	1971	

\*Acquired

(R) = Externally owned; UAB rents space

(L) = UAB-owned; space leased out

(N) = Name changed

(D) = Developer Owned and Operated

Source: Cost Analysis - Space Analysis

**UAB SPACE BY FUNDING UNIT**  
(Gross Square Footage)

<b>Year Ending</b>	<b>Educational/ General</b>	<b>Auxiliary</b>	<b>Hospital</b>	<b>Total</b>
June 30, 1990 <sup>1</sup>	3,987,318	2,658,145	1,543,062	8,188,525
June 30, 1995 <sup>1</sup>	4,717,977	3,199,602	2,120,623	10,038,202
June 30, 2000 <sup>1</sup>	5,248,700	3,617,182	2,007,712	10,873,594
June 30, 2004 <sup>1</sup>	6,254,986	3,715,081	1,756,963	11,727,030
June 30, 2005 <sup>1</sup>	6,359,404	3,803,705	2,556,626	12,719,735
June 30, 2006 <sup>2</sup>	6,707,992	3,607,382	2,547,904	12,863,278
June 30, 2007 <sup>2</sup>	6,717,672	3,630,674	2,608,032	12,956,378
June 30, 2008 <sup>2</sup>	6,927,272	3,591,055	2,614,069	13,132,396
June 30, 2009 <sup>2</sup>	8,427,883	3,268,491	2,814,150	14,510,524
June 30, 2010 <sup>2</sup>	7,317,715	4,337,510	3,463,626	15,118,851
June 30, 2011 <sup>2</sup>	8,214,434	3,448,418	4,103,164	15,766,016
June 30, 2012 <sup>2</sup>	7,275,006	4,535,783	3,606,552	15,417,341

**FUNDING SOURCES**  
**New Construction and Major Renovations**  
(Fiscal Years 1969-2012)

	<b><u>UAB Funds</u></b>	<b><u>State Funds</u></b>	<b><u>Private Funds</u></b>	<b><u>Federal Funds</u></b>	<b><u>Total<sup>4</sup></u></b>
Projects Capitalized <sup>3</sup>	\$1,544,015,590	\$157,650,212	\$106,521,473	\$202,047,328	\$2,010,234,603
Percent of Total	76.8%	7.8%	5.3%	10.1%	100.0%

**CAPITALIZED EXPENDITURES**  
(New Construction and Major Renovations)

<b><u>1969-2007</u></b>					
\$1,580,213,909					
<b><u>2008</u></b>	<b><u>2009</u></b>	<b><u>2010</u></b>	<b><u>2011</u></b>	<b><u>2012</u></b>	<b><u>Total<sup>4</sup></u></b>
\$132,504,291	\$63,983,912	\$77,224,476	\$76,426,948	\$79,881,067	\$2,010,234,603

Source: Financial Affairs

<sup>1</sup>Includes space leased by UAB and space rented out to others; excludes shell space.

<sup>2</sup>Excludes space leased by UAB and space rented out to others; excludes shell space.

<sup>3</sup>Includes buildings and building improvements capitalized as of 9/30/12; includes investment in plant funds (\$2,027,163,496) less separate campus acquired (\$16,928,893).

<sup>4</sup>Reflects capitalization adjustments in prior years.

**UAB SPACE DISTRIBUTION  
(AS OF SEPTEMBER 30, 2012)**

<b>Space Use</b>	<b>Total Net Assignable Square Feet</b>	<b>Central Administration</b>	<b>Dentistry, JHS, Medicine, Optometry</b>	<b>General Academic</b>	<b>University Hospital</b>	<b>Auxiliary</b>	<b>Non-Institutional Agency</b>
Classroom Facilities	187,038	93,822	36,618	48,310	5,996	979	1,313
Laboratory Facilities	1,277,970						
Instructional	454,639	3,450	228,434	222,755	0	0	0
Sponsored Research	532,731	653	469,565	62,513	0	0	0
Other	290,600	54,784	156,694	42,513	25,794	4,551	6,264
Office Facilities	2,114,349	341,315	938,125	345,684	365,028	41,862	82,335
Central Libraries (excludes offices)	200,064	2,668	4,653	192,244	499	0	0
Special Use Facilities <sup>1</sup>	437,825	149,576	185,662	5,482	63,869	25,560	7,676
General Use Facilities <sup>2</sup>	572,470	264,450	61,136	26,678	158,803	18,884	42,519
Support Facilities <sup>3</sup>	621,804	251,864	74,830	63,655	154,498	38,775	38,182
Highrise & Enclosed Parking Facilities	2,889,803	1,140	0	0	275,221	2,597,357	16,085
Health Care Facilities <sup>4</sup>	1,152,731	2,273	43,261	290	1,096,425	223	10,259
Residential Facilities <sup>5</sup>	370,081	28,540	564	0	49,710	236,146	55,121
Unclassified <sup>6</sup>	246,407	73,330	11,877	0	161,200	0	0
<b>TOTAL</b>	<b>10,070,542</b>	<b>1,267,865</b>	<b>2,211,419</b>	<b>1,010,124</b>	<b>2,357,043</b>	<b>2,964,337</b>	<b>259,754</b>

<sup>1</sup>Special Use Facilities include those used for athletics/physical education, audiovisual-radio-TV, non-health professional clinics, demonstrations, and greenhouses.

<sup>2</sup>General Use Facilities include spaces for assembly, exhibition, food services, lounges, day care, merchandising, recreation, meetings, and locker rooms.

<sup>3</sup>Support Facilities include central computer, central service, telecommunications, shop, storage, and hazardous materials spaces.

<sup>4</sup>Health Care Facilities include patient bedrooms and baths, nurses' stations, surgery and treatment rooms, service laboratories, supply rooms, public waiting rooms, health care service rooms, call rooms, and staff support space.

<sup>5</sup>Residential Facilities include apartments, residence halls, houses, and hotel rooms. Does not include Blazer Hall II or Blount Hall residence halls.

<sup>6</sup>Unclassified spaces are those not yet assigned, unfinished or to be renovated.

Source: Cost Analysis - Space Analysis