

FACTS & FIGURES 2001-02

Twenty-second Edition

March 2002

Office of Institutional Studies and Services
UNIVERSITY OF ALABAMA AT BIRMINGHAM
Birmingham, Alabama 35294-0104
(205) 934-2384

FOREWORD

The Office of Institutional Studies and Services is pleased to present *Facts & Figures 2001-02*. This marks the 22nd edition of a publication that has documented the exciting growth of UAB. Available electronically on the web for four years now, *Facts & Figures* is compiled by ISS but is reflective of contributions from offices all over campus. We are grateful for our contributors' continued assistance.

Our objective with this factbook is to produce a useful and usable resource for a variety of information needs. Therefore, we welcome and appreciate your comments and suggestions about the content of *Facts & Figures*.

The sculpture on the cover of this year's factbook depicts Joseph F. Volker, Ph.D., D.D.S., who played a significant role in the early growth of UAB. Dr. Volker was dean of the School of Dentistry when its first class was enrolled in 1948. At the time UAB became an autonomous campus in 1969, he became its first president. Dr. Volker was named the first chancellor of The University of Alabama System in 1976 and held this position until 1982. He died on May 3, 1989.

Frank Varga created the sculpture, which is located in the Mini Park on the south side of University Boulevard, between Hill University Center and the Education Building.

TABLE OF CONTENTS

GENERAL INFORMATION

Campus Map	3
Role and Scope	5
The Board of Trustees	9
Administration	10
UAB Organizational Structure	12
Academic Departments and Chairs	13
Significant Dates	16
Honorary Degrees Conferred	18
President's Medal Recipients	20
Program Accreditation	21
UAB University Hospital Statistical Highlights	26
Library Statistics 2001	27
Alumni Information	28
Distinguished Alumni Award	28

STUDENT INFORMATION

Fall Semester 2001 Enrollment by School and Level	31
Fall Semester 2001 Enrollment Full-time and Part-time by Race and Sex	32
Fall Semester 2001 Enrollment Profile	
By Class	33
Average Student Age	33
By Permanent Residence and Level	33
In-State Students by County Fall 2001	34
Fall Enrollment by School 1995-2001	35
Fall Enrollment by Class 1995-2001	35
Fall Enrollment by Student Level 1969-2001	36
Fall Headcount Enrollment 1969-2001 (Chart)	37
Fall Enrollment Full-time and Part-time by Sex 1985-2001	38
Fall Enrollment by Permanent Residence 1997-2001	38
Credit Hour Production Fall 2001	39
Annual Credit Hour Production by School 1994-95 through 2000-01	40
Degrees Offered at UAB.	42
Total Degrees Available	45
Degrees Awarded by School 1969-70 through 2000-01	46
Degrees Conferred July 1, 1969 - June 30, 2001	48
Required Student Tuition and Fees Fall 2001	49
Student Aid Funds Available 1994-95 through 2000-01	51
Athletics	52

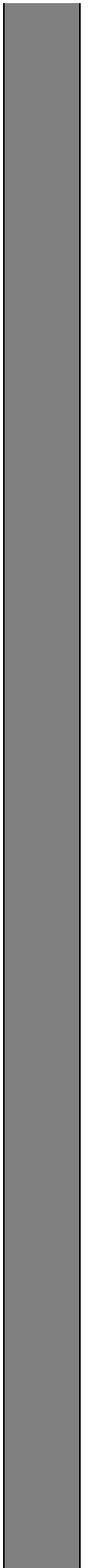
FACULTY & STAFF

Work Force FY 2001-02	55
Work Force by Area, Status, Gender, and Job Category 1994-95 through 2001-02.....	56
Work Force by Area and by Status (Charts)	57
Full-Time Work Force and Payroll 1992 through 2001	58
Full-time Faculty by Rank, Sex, and Tenure Status Fall 2001	59
Highest Degrees of Full-time Faculty by School by Rank Fall 2001	62
Endowed Positions at UAB	65
Faculty Awards and Honors	70

PHYSICAL AND FINANCIAL RESOURCES

Building Summary Fall 2001	77
New Construction and Major Renovations	83
Space Distribution	84
Financial Profile FY 2000-01 Actual and FY 2001-02 Budgeted	84
Financial Operations Actual FY 2000-01 (Chart)	87
Financial Operations Budgeted FY 2001-02 (Chart)	88
Selected Financial Highlights FY 1996-97 through FY 2000-01	89
Revenues from Selected Sources and Total FY 1991-92 through 2001-02	90
Primary Program Expenditures for FY 1995-96 through FY 2000-01	91
Administrative Expenditures for FY 1995-96 through FY 2000-01.....	91
State Funding from the Educational Trust Fund as Enacted FY 1967-68 to FY 2001-02	92
Summary of Active Grants and Contracts as of September 1, 2001	93
Active Grants and Contracts 1989 through 2001	94

General Information



ROLE AND SCOPE

Adopted by the Board of Trustees October 30, 1992

Modifications Accepted February 17, 1995

Introduction

The University of Alabama at Birmingham (UAB), a publicly supported institution of higher education located in Birmingham, Alabama, is one of three institutions comprising the University of Alabama System. UAB has three major academic units: Academic Affairs, the Academic Health Center, and the Graduate School. Within Academic Affairs, baccalaureate-level academic programs are offered through six schools: Arts and Humanities, Business, Education, Engineering, Natural Sciences and Mathematics, and Social and Behavioral Sciences. The Academic Health Center offers subbaccalaureate, baccalaureate, and professional instruction through six health professions schools: Dentistry, Health Related Professions, Medicine, Nursing, Optometry, and Public Health. It also provides primary, secondary, and tertiary health care through the University of Alabama Hospital and the health clinics. Postbaccalaureate graduate degree programs are offered individually and cooperatively by all of the various schools through the Graduate School. Both Academic Affairs and the Academic Health Center house a number of special centers and institutes which focus on specific research and service areas.

This Role and Scope statement is intended to identify the proper functions of UAB and to define appropriate operating limits. In reality, a very complex set of circumstances and influences, many beyond the immediate control of the institution, determines the actual nature of the University's activities at any particular time. Within the confines of this statement, however, the University sets forth a perspective regarding its development and reflecting its own philosophy, its own understanding of the needs of its many constituencies, and its own sense of history and future. This statement is organized by functional areas, with particular concern for the efficient and effective use of available resources.

Undergraduate Education

Through the six schools within Academic Affairs, UAB offers a full range of undergraduate programs in liberal arts, technical, preprofessional, and professional studies. Also, the Schools of Nursing, Dentistry, and Health Related Professions provide accredited health profession instructional programs at the baccalaureate levels. Determining a proper role and scope for these levels of instruction requires the consideration of several factors including the current roles of other institutions, the nature and objectives of UAB's students, and the needs of the urban area.

UAB is the largest public institution offering four-year undergraduate instruction in the Birmingham area. As such, it offers instructional programs with an appropriately high level of academic quality.

At the lower-division level, the University shares its responsibility with the public junior and community colleges in the Birmingham area. Those institutions have open admission policies, and properly assure high school graduates an entry point to higher education. In contrast, the academic offerings of UAB must be of a quality, depth, and scope sufficient both to provide introductory-level offerings and to offer complete coverage in the major disciplines and relevant supporting areas for advanced study by upper-division students. Thus, it is appropriate that each academic department offering undergraduate instruction have a fully qualified faculty of competent instructors who are active scholars and professionals in their respective disciplines.

All higher education is based upon those studies comprising a traditional arts and sciences program. Its aims are the exposure to faculty who can challenge the effects of ignorance and parochialism and the provision of information concerning aptitudes, attitudes, and habits of mind basic to common human pursuits. Thus, UAB is obligated to offer strong arts and sciences subjects to form a foundation upon which more specialized vocational and technical programs can be constructed.

UAB's urban location and status as the senior public institution in the Birmingham area influence in important ways the scope of its baccalaureate programs. The University enrolls a highly diverse student body reflecting the heterogeneity of its urban environment. Included are students from many age brackets, educational backgrounds, and ethnic groups, many of whom also are employed while seeking new or improved career training and qualifications. The major components of the Birmingham economy have particular requirements for trained manpower in business, technology, and the professions. Accordingly, undergraduate programs must be adequate in scope and quality to provide support for the economic and professional development of Birmingham and the state.

Because of its location within a highly developed cultural, industrial, and economic center and because of its nationally recognized academic health center, the University is the natural setting in the state for a broad range of technical and professional training programs, including business, engineering, education, and all health-related disciplines. It is appropriate, therefore, that the overall quality and range of subdisciplines offered be fully developed, and that, where indicated, programs be multidisciplinary and mutually supportive. At the same time, students preparing for careers in these areas must be provided a core of knowledge in the liberal arts sufficient in scope and quality for them to be fully educated in the true sense and to be prepared to deal with the normative and ethical dimensions of their professions.

In support of its various academic programs, UAB is committed to a program of services and nonclassroom (nontraditional) educational experiences which enhance its students' total development. These may include social, cultural, and recreational programs and opportunities for learning experiences.

Health Professions Training

The Academic Health Center has achieved a position of national prominence as a center for the training of health professionals in Medicine, Dentistry, Optometry, Nursing, Health Related Professions, and Public Health. Each of its six schools offers a comprehensive range of programs from basic preparation to sophisticated graduate and specialty training. The Schools of Dentistry and Public Health are the only such schools in the state, and the School of Optometry is the only such public facility in the Southeast. The exceptional quality of all of its programs enables the Academic Health Center to attract substantial amounts of external funding in support of its educational, research, and service activities. Because of this level of development, the Academic Health Center serves as a resource for regional and national health professionals.

The Academic Health Center has the primary role in meeting the state's health professional needs. It establishes an appropriate reference point from which to determine the desirable growth limits of other state-supported education in the health professions. To ensure the most efficient use of public resources, the University assists the state in evaluating its health professional needs and in developing the best means of meeting those needs. Where appropriate and consistent with the maintenance of quality, UAB endeavors to extend its educational resources through such cooperative mechanisms as remote professional residency programs and outreach programs with practicing health professionals.

Graduate Education

Postbaccalaureate graduate programs are offered through the Graduate School. Graduate education transcends the presentation and assimilation of existing knowledge and specifically trains individuals for involvement in generating new knowledge through research and creative thinking.

As is the case for undergraduate education, the University also considers a variety of factors in determining the proper role and scope for its graduate programs. These factors include the responsibility of the University to take full advantage of its academic health center, the large and diverse nature of its urban constituency, the national reputation of its biomedical programs, the particular circumstances related to serving students from many backgrounds, the needs of the community which it serves, and the need to train highly qualified scholars for faculty positions.

The large number of place-bound individuals seeking graduate-level instruction for career qualification and advancement, the community's need for individuals with advanced training, and the institution's need to support undergraduate and professional student instruction mandate that the institution develop strong programs in the health professions, business, education, engineering, urban affairs, and public administration. Further, UAB's national prominence in biomedical research requires that it develop strong graduate programs in the natural, social, and behavioral sciences and in interdisciplinary fields such as nutrition, public health, health education, biomedical engineering, education for the physically and mentally handicapped (special education), medical psychology, and neurosciences. As an urban university, UAB is an appropriate setting for the development of outstanding programs in a variety of disciplines such as economics, the social sciences, and applied fields such as criminal justice, public administration, and social work.

Research

Strong educational programs include research activities of the highest quality. It is, therefore, appropriate that the University emphasize the roles of both basic and applied research. The national prominence of UAB in research dictates continuing major participation by each academic unit and specialized center.

The urban setting of the University necessitates the development of research programs responsive to the city's economic, social, and cultural needs. At the same time, responsibilities to the state and region for programs such as public health and nutrition demand similar development. The research role requires implementation of special aspects of UAB's instruction and service responsibilities.

Health Care

The Academic Health Center serves as the state's principal tertiary health-care provider, as an ultimate referral center for Alabama patients, and as a referral center for persons from across the nation who need sophisticated clinical services. UAB has attained national prominence through its many centers such as those for cardiovascular disorders, cancer, dental abnormalities, arthritis, diabetes, and disorders of the brain and nervous system.

As a part of the Academic Health Center, the University Hospital plays a prominent role in the training of health professionals. It also serves a wide spectrum of patients, including many who are indigent.

Academic Health Center units provide specialized health care for the citizens of Alabama while carrying out their mandates to develop new ideas and techniques, to treat health-related problems, and to educate health-care professionals.

Continuing Education

As the senior public institution located in the major urban area of the state, UAB has a special commitment to develop and maintain comprehensive programs of continuing education. More individuals outside the traditional 18- to 24-year age range are re-entering education, pursuing "lifelong learning" for many different purposes by means of: (1) completion of degree programs; (2) self-improvement in skills, understanding, and intellectual enlightenment; (3) vocational change or improvement (including certificate programs); and (4) professional continuing education.

UAB offers continuing education opportunities of a quality and diversity consistent with the other programs of the University. The resources of UAB mandate its primary role in the implementation of comprehensive continuing education programs in the Birmingham geographic area.

Service

A major theme permeating all the activities of a comprehensive university is service to the public. Because of its location and its strengths, UAB's service activities focus on the problems confronting the urban area and the health needs of the state and region.

Summary

The University of Alabama at Birmingham, located in the state's principal urban area, is the senior public institution serving Alabama's economic, industrial, and cultural center. Its programs and services in the health professions and in health care are preeminent in the state, and it is a regional and national resource in health-related research, training, and service. UAB's Academic Health Center and Academic Affairs units are interdependent and mutually supportive, together providing a unique resource for this state and region. The corollary is that the University must maintain the basic quality of all its programs and activities at a level consistent with its mission. At the same time, areas of special competence which emerge from its urban setting and health focus shape the ways in which the institution best serves Birmingham, the state, and the nation.

**THE BOARD OF TRUSTEES OF
THE UNIVERSITY OF ALABAMA**

The Honorable Don Siegelman
Governor of Alabama
President ex officio

Dr. Ed Richardson
State Superintendent of Education
Ex officio

**TRUSTEES
(by Congressional district)**

First: Angus R. Cooper, II, Mobile
Oliver H. Delchamps, Jr., Fairhope

Fifth: Olin B. King, Huntsville
Peter L. Lowe, Huntsville

Second: Joseph E. Espy, III, Montgomery
Joseph L. Fine, Montgomery

Sixth: Paul W. Bryant, Jr., Tuscaloosa
John J. McMahon, Jr., Birmingham
(President pro tempore)
Richard M. Scrusby, Birmingham

Third: Vanessa Leonard, Rockford
John Russell Thomas, Alexander City

Seventh: John H. England, Jr., Tuscaloosa
Andria S. Hurst, Birmingham

Fourth: Sidney L. McDonald, Arab
Finis E. St. John, IV, Cullman

TRUSTEES EMERITI

T. Massey Bedsole, Mobile
Frank H. Bromberg, Jr., Birmingham
John A. Caddell, Decatur
Garry Neil Drummond, Birmingham
Jack Edwards, Mobile
Sandra Hullett, M.D., Eutaw
James D. Loftin, Sr., Dothan
John T. Oliver, Jr., Jasper
Martha Simms Rambo, Huntsville
Thomas E. Rast, Birmingham
Yetta G. Samford, Jr., Opelika
Maury D. Smith, Montgomery
Cleophus Thomas, Jr., Anniston
Cordell Wynn, Tuscaloosa

Chancellor: Malcolm Portera

Secretary of the Board: John B. Hicks

General Counsel: C. Glenn Powell

UAB ADMINISTRATION

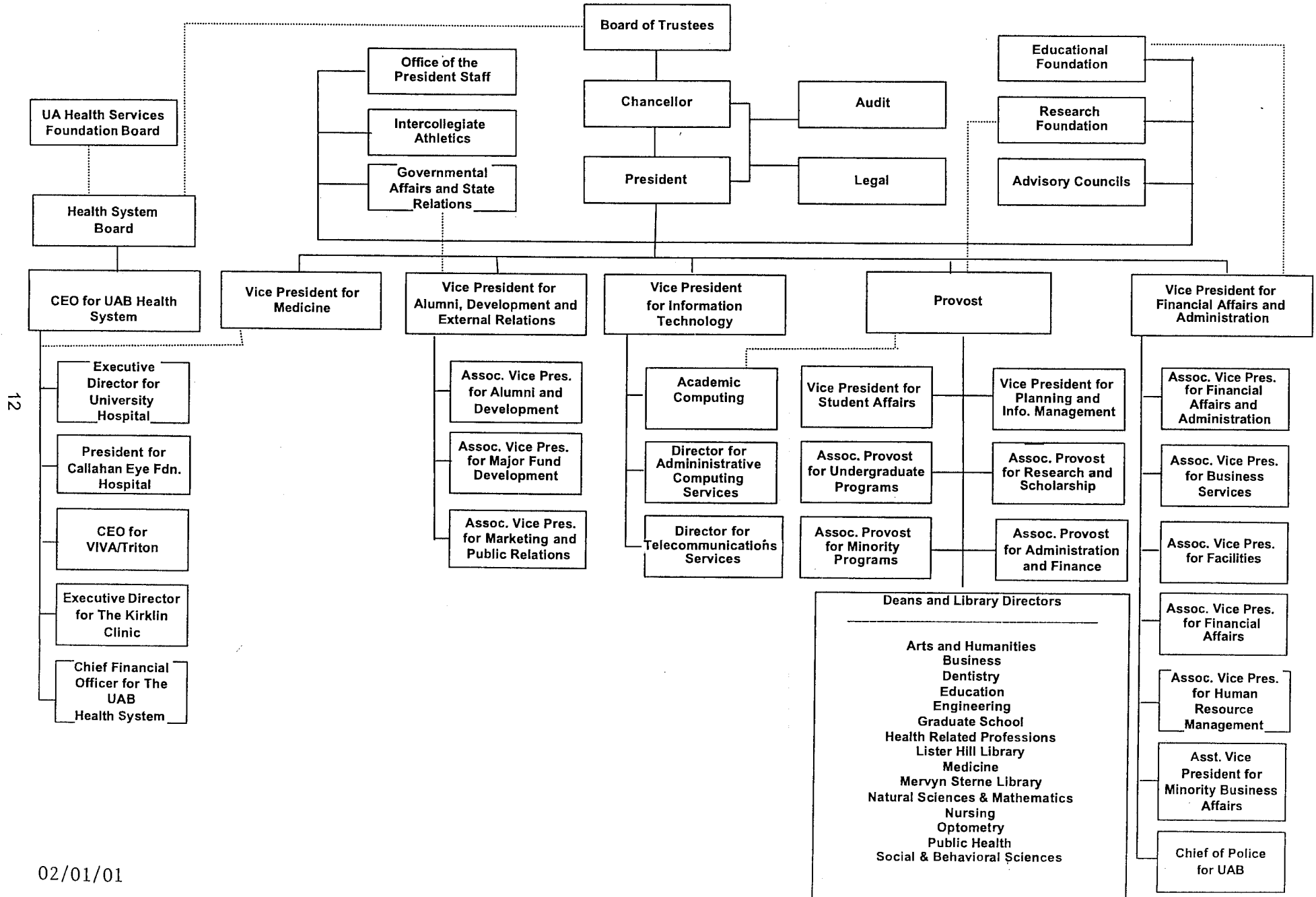
President	Dr. Carol Z. Garrison
Acting Provost	Dr. Eli Capilouto
Vice President/Dean, School of Medicine	Dr. William B. Deal
Director and Chief Executive Officer, UAB Health System	Mr. David J. Fine
Vice President for Student Affairs	Dr. Virginia D. Gauld
Interim Vice President for Information Technology	Ms. Sheila Sanders
Vice President for Development, Alumni, and External Relations	Dr. Shirley Salloway Kahn
Vice President for Planning and Information Management	Dr. John M. Lyons
Vice President for Financial Affairs and Administration	Mr. Richard L. Margison

UAB ADMINISTRATION

<u>Unit/School (Date of Establishment)</u>	<u>Dean/Administrator</u>
Arts and Humanities (1973)	Bert Brouwer, M.F.A., Dean
Business (1971)	Robert E. Holmes, Ph.D., Dean
Dentistry (1945)	Mary Lynne Capilouto, D.M.D., Dean
Education (1971)	Michael J. Froning, Ed.D., Dean
Engineering (1971)	Linda C. Lucas, Ph.D., Dean
Health Related Professions (1969)	Harold P. Jones, Ph.D., Dean
Medicine (1945*)	William B. Deal, M.D., Vice President/Dean
Natural Sciences and Mathematics (1973)	James B. McClintock, Ph.D., Dean
Nursing (1967*)	Rachel Z. Booth, Ph.D., Dean
Optometry (1969)	John F. Amos, O.D., Interim Dean
Public Health (1981)	Max Michael, III, M.D., Dean
Social and Behavioral Sciences (1973)	Tennant S. McWilliams, Ph.D., Dean
Graduate School (1970)	Joan F. Lorden, Ph.D., Dean
UAB University Hospital (1945)	Mary G. Nash, Ph.D., Executive Director Scott E. Buchalter, M.D., Chief of Staff

* Moved to Birmingham from Tuscaloosa.

UAB ORGANIZATIONAL STRUCTURE



UAB ACADEMIC DEPARTMENTS AND CHAIRS

School of Arts and Humanities

Art and Art History
Communication Studies
English
Foreign Languages
Music
Philosophy
Theatre

Chair

Janice V. Kluge, M.F.A., Interim
Marcus L. Hickson, III, Ph.D.
Marilyn J. Kurata, Ph.D.
Sheri Spaine Long, Ph.D., Interim
Jeffrey W. Reynolds, D.M.A.
Harold A. Kincaid, Ph.D.
Marc Powers, M.F.A.

School of Business

Accounting and Information Systems
Finance, Economics, and Quantitative Methods
Management, Marketing, and Industrial Distribution

Chair

Frank M. Messina, Ph.D., Interim
Richard M. Burns, Ph.D.
Michael R. Bowers, Ph.D.

School of Dentistry

Comprehensive Dentistry
Diagnostic Sciences
Endodontics and Pulp Biology
Oral and Maxillofacial Surgery
Oral Biology
Orthodontics
Pediatric Dentistry
Periodontology
Prosthodontics and Biomaterials

Chair

Peng-Ru Liu, D.M.D., D.D.S., M.S.
Gregg H. Gilbert, D.D.S., M.B.A.
Paul D. Eleazer, D.D.S., M.S.
Peter D. Waite, M.P.H., D.D.S., M.D.
Noel K. Childers, D.D.S., Ph.D., M.S.
P. Lionel Sadowsky, D.M.D., B.D.S., M.Dent.
John B. Thornton, D.M.D., M.A.
Marjorie K. Jeffcoat, D.M.D.
Sandra Jean O'Neal, D.M.D., M.S.D.

School of Education

Curriculum and Instruction
Human Studies
Leadership, Special Education and Foundations

Chair

Charles Calhoun, Ph.D.
David M. Macrina, Ph.D.
W. Boyd Rogan, Ed.D.

School of Engineering

Biomedical Engineering
Civil and Environmental Engineering
Electrical and Computer Engineering
Materials Science and Engineering
Mechanical Engineering

Chair

William M. Smith, Ph.D., Interim
Fouad H. Fouad, Ph.D., P.E.
Gregg L. Vaughn, Ph.D., P.E.
J. Barry Andrews, Ph.D., Interim
Bharat K. Soni, Ph.D.

UAB ACADEMIC DEPARTMENTS AND CHAIRS (CONTINUED)

School of Health Related Professions

Critical Care
Diagnostic and Therapeutic Sciences
Health Services Administration
Nutrition Sciences*
Occupational Therapy
Physical Therapy

Chair

Claire Peel, Ph.D., Interim
Vic Skrinska, Ph.D., Interim
Gerald L. Glandon, Ph.D.
C. Michael Brooks, Ed.D., Interim
Claudia Peyton, Ph.D.
Sharon Shaw, Dr.P.H.

Joint Health Sciences

Biochemistry and Molecular Genetics
Cell Biology
Genomics and Pathobiology
Microbiology
Neurobiology
Nutrition Sciences*
Pathology
Pharmacology and Toxicology
Physiology and Biophysics

Chair

Tim M. Townes, Ph.D.
Etty Benveniste, Ph.D.
Philip A. Wood, D.V.M., Ph.D.
David D. Chaplin, M.D., Ph.D.
Michael J. Friedlander, Ph.D.
C. Michael Brooks, Ed.D., Interim
Jay M. McDonald, M.D.
Robert B. Diasio, M.D.
Dale J. Benos, Ph.D.

School of Medicine

Anesthesiology
Dermatology
Emergency Medicine
Family and Community Medicine
Human Genetics
Medicine
Neurology
Obstetrics and Gynecology
Ophthalmology
Pediatrics
Physical Medicine and Rehabilitation
Psychiatry and Behavioral Neurobiology
Radiation Oncology
Radiology
Surgery

Chair

David H. Chestnut, M.D.
Craig A. Elmets, M.D.
Thomas E. Terndrup, M.D.
T. Michael Harrington, M.D.
Andrew J. Carroll III, Ph.D., Interim
William J. Koopman, M.D.
Edward Faught, M.D., Interim
John C. Hauth, M.D., Interim
Lanning B. Kline, M.D.
Sergio B. Stagno, M.D.
Amie B. Jackson, M.D.
F. Cleveland Kinney, M.D., Ph.D., Interim
James A. Bonner, M.D.
Robert J. Stanley, M.D.
Kirby I. Bland, M.D.

School of Natural Sciences and Mathematics

Biology
Chemistry
Computer and Information Sciences
Mathematics
Physics

Chair

Ken R. Marion, Ph.D.
Larry K. Krannich, Ph.D.
Warren T. Jones, Ph.D.
Rudi Weikard, Ph.D.
David L. Shealy, Ph.D.

*Joint with the Schools of Dentistry, Health Related Professions, and Medicine.

UAB ACADEMIC DEPARTMENTS AND CHAIRS (CONTINUED)

School of Nursing

Undergraduate Studies
Graduate Studies

Alberta McCaleb, D.S.N.
Carol J. Dashiff, Ph.D.

School of Optometry

Optometry
Physiological Optics

Chair

Jimmy D. Bartlett, O.D., Interim
Lawrence E. Mays, Ph.D.

School of Public Health

Biostatistics
Environmental Health Sciences
Epidemiology and International Health
Health Behavior
Health Care Organization and Policy
Maternal and Child Health

Chair

George Howard, Dr.P.H.
Henry Jay Forman, Ph.D.
H. Michael Maetz, D.V.M., M.P.H.
Diane Grimley, Ph.D., Interim
Peter M. Ginter, Ph.D.
Greg R. Alexander, M.P.H., Sc.D.

School of Social and Behavioral Sciences

Anthropology
Government and Public Service
History
Justice Sciences
Psychology
Sociology

Chair

Brian C. Hesse, Ph.D.
James D. Slack, Ph.D.
James F. Tent, Ph.D.
Brent L. Smith, Ph.D.
Carl E. McFarland, Jr., Ph.D.
Ferris J. Ritchey, Ph.D.

SIGNIFICANT UAB DATES

- 1821 - Board of Trustees of the University of Alabama created by the General Assembly
- 1936 - Extension Center of the University of Alabama opened in Birmingham
- 1945 - School of Medicine moved from Tuscaloosa to Birmingham and became a four-year school
- 1945 - Jefferson and Hillman Hospitals combined to serve as the teaching hospital for the School of Medicine
- 1948 - School of Dentistry, with Dr. Joseph F. Volker as dean, enrolled its first class
- 1955 - First Ph.D. earned on the Birmingham campus
- 1958 - Campus expansion began with acquisition of approximately 8.5 blocks (60 acres) from the Birmingham Housing Authority
- 1966 - Extension Center in Birmingham became the University of Alabama in Birmingham, one of three campuses of the University of Alabama
- 1966 - College of General Studies established
- 1966 - School of Health Services Administration established
- 1967 - School of Nursing moved from Tuscaloosa to Birmingham
- 1969 - UAB became an autonomous campus with Dr. Joseph F. Volker as its first president
- 1969 - School of Community and Allied Health Resources established by the Alabama Legislature and Regional Technical Institute established for health occupations training
- 1969 - School of Optometry established
- 1970 - Graduate School established
- 1970 - First degrees awarded by UAB
- 1971 - College of General Studies reorganized as University College with Schools of Business, Education, Engineering, and Arts and Sciences
- 1973 - School of Arts and Sciences restructured into Schools of Humanities, Natural Sciences and Mathematics, and Social and Behavioral Sciences
- 1975 - Funds appropriated by Legislature for the purchase of approximately 30 blocks (140 acres) of Urban Renewal lands for UAB expansion
- 1976 - Dr. Joseph F. Volker appointed first chancellor of the University of Alabama System
- 1977 - Dr. S. Richardson Hill, Jr. named second president

SIGNIFICANT UAB DATES (CONTINUED)

- 1981 - School of Public Health established
- 1984 - University of Alabama in Birmingham became University of Alabama at Birmingham
- 1987 - Dr. Charles A. McCallum named third president
- 1987 - School of Community and Allied Health became School of Health Related Professions
- 1988 - School of Humanities became School of Arts and Humanities
- 1989 - UAB exceeded \$100 million in active grants and contracts
- 1989 - Use of the designation "University College" discontinued
- 1990 - 50,000th degree awarded by UAB
- 1992 - UAB's outpatient services moved to the newly constructed Kirklin Clinic
- 1993 - Dr. J. Claude Bennett named fourth president
- 1994 - UAB acquired Walker College, which became known as UAB Walker College
- 1994-95 - Certificate-level, junior college linkage programs (Regional Technical Institute) in the School of Health Related Professions phased out
- 1995 - Academic units reorganized under provost
- 1995 - UAB Health System established
- 1995 - UAB exceeded \$200 million in active grants and contracts
- 1997 - Mr. Paul Hardin named interim president
- 1997 - Dr. W. Ann Reynolds named fifth president
- 1998 - Relationship terminated between UAB and UAB Walker College
- 1999 - UAB launched the public phase of a \$250 million capital campaign, the largest capital campaign in its history. The goal was later raised to \$350 million.
- 1999 - Southern Research Institute affiliated with UAB
- 2000 - UAB exceeded \$300 million in active grants and contracts
- 2002 - University of Alabama Board of Trustees approved an affiliation agreement between the UAB Health System and Bessemer Carraway Medical Center
- 2002 - Dr. Malcolm Portera named interim president
- 2002 - Dr. Carol Garrison named sixth president

HONORARY UAB DEGREES CONFERRED

<u>Name</u>	<u>Date Conferred*</u>	<u>Degree</u>
Champ Lyons	October 1, 1965	Doctor of Science
Tinsley Randolph Harrison	October 1, 1965	Doctor of Science
Walter Bouldin	August 29, 1966	Doctor of Laws
Matthew Francis McNulty, Jr.	August 22, 1969	Doctor of Science
Ruth Lawson Hanson	August 22, 1969	Doctor of Humanities
Joseph F. Volker	June 6, 1970	Doctor of Science
Bengt E. Gustafson	June 5, 1971	Doctor of Science
John A. Hand	June 5, 1971	Doctor of Laws
John Edward Meyer	June 4, 1972	Doctor of Humanities
Virginia Baxley	June 4, 1972	Master of Arts
Clyde Guss Cox	August 27, 1972	Master of Arts
Joseph Smolian	August 27, 1972	Doctor of Humanities
Clarence A. Hanson	June 9, 1974	Doctor of Literature
Samuel Richardson Hill, Jr.	June 9, 1975	Doctor of Science
Charles Alexander McCallum	June 9, 1975	Doctor of Science
Arthur Davis Shores	June 9, 1975	Doctor of Humanities
Robert Hugh Daniel	June 5, 1977	Doctor of Laws
William Paul Brann	June 5, 1977	Doctor of Laws
William Micajah Spencer, Jr.	June 5, 1977	Doctor of Humanities
George W. Campbell	June 5, 1977	Doctor of Laws
Julia Walker Russell	June 5, 1977	Doctor of Humane Letters
Henry Poellnitz Johnston	June 4, 1978	Doctor of Humanities
George Mooar Rust	June 4, 1978	Doctor of Science
Hall Williams Thompson	June 4, 1978	Doctor of Laws
John W. Kirklin	June 4, 1978	Doctor of Science
Margaret Spain McDonald	June 4, 1978	Doctor of Humanities
Samuel Booth Barker	June 3, 1979	Doctor of Science
Emil Carl Hess	June 3, 1979	Doctor of Humanities
William Hansell Hulsey	June 3, 1979	Doctor of Humanities
Kenneth Rule Daniel	June 8, 1980	Doctor of Science
William James Rushton	June 8, 1980	Doctor of Laws
Frank Park Samford	June 8, 1980	Doctor of Laws
Emmett Bryan Carmichael	June 7, 1981	Doctor of Science
Frederick W. Conner	June 7, 1981	Doctor of Humanities
Robert M. Frank	June 7, 1981	Doctor of Science
John S. Jemison, Jr.	June 7, 1981	Doctor of Laws
Howard Lamar Holley	June 6, 1982	Doctor of Science
A. Edward Maumenee	June 6, 1982	Doctor of Science
John S. Shaw, Jr.	June 6, 1982	Doctor of Laws
Joseph McConnell Farley	June 5, 1983	Doctor of Laws
J. Garber Galbraith	June 5, 1983	Doctor of Science
Charles W. Ireland	June 5, 1983	Doctor of Laws
Fuller Earle Callaway, Jr.	June 3, 1984	Doctor of Science
Thomas Kermit Hearn, Jr.	June 3, 1984	Doctor of Humanities
James Coleman Lee, Jr.	June 3, 1984	Doctor of Laws
James Allen Pittman, Jr.	June 3, 1984	Doctor of Science
Leonard Robinson	June 3, 1984	Doctor of Science
Jack J. Dreyfus	June 2, 1985	Doctor of Laws
Frederick Chapman Robbins	June 2, 1985	Doctor of Laws

*Honorary degrees conferred prior to 1970 were conferred at the University of Alabama, Tuscaloosa.

HONORARY UAB DEGREES CONFERRED (CONTINUED)

<u>Name</u>	<u>Date Conferred*</u>	<u>Degree</u>
Henry C. Goodrich	June 8, 1986	Doctor of Laws
Jack Dobbs McSpadden	June 8, 1986	Doctor of Laws
William F. Edmonds	June 8, 1986	Doctor of Science
W. Houston Blount	June 7, 1987	Doctor of Laws
Crawford T. Johnson, III	June 7, 1987	Doctor of Laws
Joseph S. Bruno	June 5, 1988	Doctor of Laws
Eugene C. Gwaltney	June 5, 1988	Doctor of Laws
Charles B. Webb, Jr.	June 5, 1988	Doctor of Laws
Glenn Ireland, II	June 4, 1989	Doctor of Laws
William M. Spencer, III	June 4, 1989	Doctor of Laws
Clifton R. Wharton, Jr.	June 4, 1989	Doctor of Humane Letters
Katharine Reynolds Ireland	June 3, 1990	Doctor of Humanities
Charles Caldwell Marks	June 3, 1990	Doctor of Laws
Louis J. Willie	June 3, 1990	Doctor of Laws
Wallace R. Bunn	June 2, 1991	Doctor of Laws
William R. Ireland	June 2, 1991	Doctor of Laws
Thomas E. Rast	June 2, 1991	Doctor of Laws
J. Claude Bennett	June 7, 1992	Doctor of Science
Virginia Van der Veer Hamilton	June 7, 1992	Doctor of Letters
Carolyn Reid-Wallace	June 7, 1992	Doctor of Humane Letters
Richard Arrington, Jr.	June 6, 1993	Doctor of Science
Arnold G. Diethelm	June 6, 1993	Doctor of Science
John R. Durant	June 6, 1993	Doctor of Science
H. Brandt Ayers	June 5, 1994	Doctor of Humane Letters
George D. Lundberg	June 5, 1994	Doctor of Science
Wallace D. Malone, Jr.	June 4, 1995	Doctor of Laws
James Rachels	June 4, 1995	Doctor of Humane Letters
Alys Robinson Stephens	June 4, 1995	Doctor of Humanities
Elmer B. Harris	June 2, 1996	Doctor of Laws
Stevie Wonder	June 2, 1996	Doctor of Music
John W. Woods	June 2, 1996	Doctor of Laws
Don Logan	June 8, 1997	Doctor of Humane Letters
Sam C. Pointer, Jr.	June 8, 1997	Doctor of Laws
James H. Woodward	June 8, 1997	Doctor of Laws
Robert Luckie, Jr.	December 7, 1997	Doctor of Humanities
John J. McMahon, Jr.	June 7, 1998	Doctor of Laws
Eric F. Wieschaus	June 7, 1998	Doctor of Science
Lord Trevor Smith	December 6, 1998	Doctor of Humane Letters
Willie L. Brown, Jr.	June 6, 1999	Doctor of Humane Letters
H. Corbin Day	June 6, 1999	Doctor of Humane Letters
David Baltimore	December 5, 1999	Doctor of Science
William J. McDonough	December 5, 1999	Doctor of Humane Letters
David Satcher	June 4, 2000	Doctor of Science
Peter A. Georgescu	December 3, 2000	Doctor of Humane Letters
W. Richard West	June 10, 2001	Doctor of Laws
Regina M. Benjamin	December 15, 2001	Doctor of Science
Marie S. Ingalls	May 4, 2002	Doctor of Humanities
Michael E. Stephens	May 4, 2002	Doctor of Humanities

*Honorary degrees conferred prior to 1970 were conferred at the University of Alabama, Tuscaloosa.

PRESIDENT'S MEDAL RECIPIENTS

- 1985 - J. Durwood Bradley, M.D.
- 1986 - B. Gene Bartow, Janet Redman Hill
- 1987 - Peter Garthwaite Smith
- 1988 - Max D. Cooper, M.D.
- 1989 - James Hatcher
- 1990 - Fred W. Sington
- 1991 - Samuel Booth Barker, Ph.D
- 1992 - Juan M. Navia, Ph.D
- 1993 - Albert F. LoBuglio, M.D.
- 1994 - Aaron L. Lamar, Jr., Ed. D.
- 1995 - George N. Mickwee
- 1996 - William A. Sibley, Ph.D.
- 1997 - Linda Flaherty-Goldsmith
- 1998 - Odessa Woolfolk
- 1999 - James A. Garland
- 2000 - Albert D. Pacifico, M.D.
- 2001 - John N. Whitaker, M.D. (posthumously)

UAB PROGRAM ACCREDITATION

<u>Programs Eligible for Accreditation</u>	<u>Year Program Started</u>	<u>Most Recent Accreditation</u>	<u>Accreditation Agency</u>
UAB	1969	1994	Southern Association of Colleges and Schools
GRADUATE SCHOOL	1970 (as UAB)		Member of Council of Graduate Schools in the United States
SCHOOL OF ARTS AND HUMANITIES			
Art	1972	2000	National Association of Schools of Art and Design
Music	1982	1997	National Association of Schools of Music
SCHOOL OF BUSINESS			
Accounting	1969	2002	Association to Advance Collegiate Schools of Business
Baccalaureate Level	1969	2002	Association to Advance Collegiate Schools of Business
Master's Level	1982	2002	
SCHOOL OF DENTISTRY			
All Specialty Programs:	1948	2000	American Dental Association Commission on Accreditation (ADA)
Endodontics	1956	2000	ADA Commission on Accreditation
Maxillofacial Prosthodontics	1973	2000	
Oral and Maxillofacial Surgery	1949	1999	
Orthodontics	1952	2000	
Pediatric Dentistry	1951	2000	
Periodontics	1956	2000	
Prosthodontics	1955	2000	
General Practice Residency	1977	2000	ADA Commission on Accreditation
Advanced Educ. General Dentistry	1990	2000	ADA Commission on Accreditation
SCHOOL OF EDUCATION			
	1969	2000	National Council for Accreditation of Teacher Education
		2000	State Board of Education
Art Education	1972	2000	National Association of Schools of Art and Design
Music Education	1984	1997	National Association of Schools of Music
Rehabilitation Counseling	1980	2001	Council on Rehabilitation Education

UAB PROGRAM ACCREDITATION (CONTINUED)

<u>Programs Eligible for Accreditation</u>	<u>Year Program Started</u>	<u>Most Recent Accreditation</u>	<u>Accreditation Agency</u>
SCHOOL OF ENGINEERING Baccalaureate Level	1969	1995	Accreditation Board for Engineering and Technology
SCHOOL OF HEALTH RELATED PROFESSIONS			
<u>Critical Care Department</u>			
Nurse Anesthesia	1946	2000	Council on Accreditation of Nurse Anesthesia Educational Programs
Respiratory Therapist	1973	2001	Joint Review Committee for Respiratory Therapy Education, CAAHEP
Surgical Physician Assistant	1967	2000	Joint Review Committee on Educational Programs for Physician Assistants, CAAHEP
<u>Diagnostic and Therapeutic Sciences Department</u>			
Cytotechnology	1963	1995	Cytotechnology Programs Review Committee, American Society of Cytopathology, Commission on Accreditation of Allied Health Education Programs of the American Medical Association (CAAHEP)
Medical Technology	1945	1997	National Accrediting Agency for Clinical Laboratory Sciences
Nuclear Medicine Technology	1969	1996	Joint Review Committee on Educational Programs in NMT, Department of Education
Radiation Therapist	1982	2001	Joint Review Committee on Education in Radiologic Technology
Radiography	1944	1996	Joint Review Committee on Education in Radiologic Technology
<u>Health Services Administration Department</u>			
Health Administration	1965	2002	Accrediting Commission on Education for Health Services Administration
Health Information Management Baccalaureate Level	1972	2001	Council on Accreditation of the American Health Information Management Association, CAAHEP
<u>Nutrition Sciences Department</u>			
Dietetic Internship	1963	1998	American Dietetic Association

UAB PROGRAM ACCREDITATION (CONTINUED)

<u>Programs Eligible for Accreditation</u>	<u>Year Program Started</u>	<u>Most Recent Accreditation</u>	<u>Accreditation Agency</u>
<u>Occupational Therapy Department</u> Occupational Therapy	1968	1997	Accreditation Committee of the American Occupational Therapy Association, CAAHEP
<u>Physical Therapy Department</u> Physical Therapy	1975	2001	American Physical Therapy Association
<u>Speech and Hearing Sciences</u> Speech and Hearing Program	1948	1997	American Board of Examiners in Audiology and Speech/ Language Pathology
UNIVERSITY OF ALABAMA SCHOOL OF MEDICINE	1945	1998	Liaison Committee on Medical Education
Including:			
School of Medicine - Birmingham			
School of Primary Medical Care - Huntsville			
College of Community Health Sciences - Tuscaloosa			
Division of Continuing Medical Education		2000	AMA Accreditation Council for Continuing Medical Education
UAB University Hospital		2000	Joint Commission on Accreditation of Healthcare Organizations
		1996	Accreditation Council on Graduate Medical Education (ACGME)
Emergency Medical Technician	1974	1998	Committee on Accreditation of Education Programs for the EMS Professions (CAAHEP)
SCHOOL OF NATURAL SCIENCES AND MATHEMATICS			
Chemistry	1969	1999	American Chemical Society
SCHOOL OF NURSING	1950	2000	Commission on Collegiate Nursing Education
SCHOOL OF OPTOMETRY			
Professional Program (O.D.)	1969	2002	American Optometric Association Council on Optometric Education
Residency programs:			American Optometric Association Council on Optometric Education
Cornea and Contact Lenses	1980	2002	
Family Practice Optometry	1978	1996	
Geriatric Optometry and Low Vision Rehabilitation	1982	1997	

UAB PROGRAM ACCREDITATION (CONTINUED)

<u>Programs Eligible for Accreditation</u>	<u>Year Program Started</u>	<u>Most Recent Accreditation</u>	<u>Accreditation Agency</u>
Primary Eye Care-Veterans Affairs Ocular Disease	1979	1997	
Georgia	1983	2000	
Tennessee	1997	1999	
Pediatric Optometry	1986	2000	
SCHOOL OF PUBLIC HEALTH		2001	Council on Education for Public Health
M.P.H. Program	1966		
M.S.P.H. Program	1979		
Dr.P.H. Program	1979		
Ph.D. Program	1985		
M.S.P.H. (Industrial Hygiene)	1979	1998	Related Accreditation Commission, Accreditation Board of Engineering and Technology
SCHOOL OF SOCIAL AND BEHAVIORAL SCIENCES			
Medical Psychology	1980	1996	American Psychological Association
Public Administration (M.P.A.)	1978	2002	National Association of Schools of Public Affairs and Administration
Social Work	1976	2001	Council on Social Work Education

UAB PROGRAM ACCREDITATION (CONTINUED)

RESIDENCY AND SUBSPECIALTY TRAINING PROGRAMS AT UAB HOSPITAL ACCREDITED BY ACCREDITATION COUNCIL ON GRADUATE MEDICAL EDUCATION

<u>Department</u>	<u>Residency Program</u>	<u>Subspecialty Program</u>	<u>Date Last Accredited</u>	
Anesthesiology	Anesthesiology		11/16/98	
		Critical Care Anesthesiology	5/22/00	
		Pain Management Anesthesiology	11/18/98	
		Pediatric Anesthesiology	Pending	
Dermatology	Dermatology		11/24/99	
Emergency Medicine	Emergency Medicine		11/26/01	
Family & Community Medicine	Family Practice		6/25/01	
		Family Practice (Huntsville)	9/28/98	
	Family Practice (Selma) Family Practice (Tuscaloosa)	Sports Medicine (Huntsville)	9/28/98	
			6/8/00	
			6/25/01	
Medicine	Internal Medicine		6/18/99	
		Allergy and Immunology	11/7/95	
		Cardiovascular Disease	6/18/99	
		Clinical Cardiac Electrophysiology	11/5/99	
		Endocrinology/Diabetes/Metabolism	3/1/00	
		Gastroenterology	12/8/97	
		Geriatric Medicine	6/18/99	
		Hematology/Oncology	6/18/99	
		Infectious Diseases	12/8/97	
		Nephrology	12/8/97	
		Pulmonary Disease/Allergy & Critical Care	8/17/98	
		Rheumatology	6/18/99	
			Internal Medicine (Montgomery)	4/3/00
		Human Genetics	Medical Genetics	
Neurology	Neurology		12/21/00	
		Child Neurology	12/21/00	
		Clinical Neurophysiology	12/21/00	
Obstetrics & Gynecology	Obstetrics & Gynecology		11/30/99	
Ophthalmology	Ophthalmology		7/20/00	
Pathology	Pathology		10/28/98	
		Blood Banking/Transfusion Medicine	5/8/01	
		Cytopathology	11/1/00	
		Dermatopathology	10/30/01	
		Forensic Pathology	5/8/01	
		Hematopathology	11/6/98	
		Neuropathology	11/10/99	
Pediatrics	Pediatrics		11/12/97	
		Adolescent Medicine	11/15/00	
		Neonatal/Perinatal Medicine	11/12/97	
		Pediatric Critical Care	11/12/97	
		Pediatric Emergency Medicine	11/4/99	
		Pediatric Endocrinology	4/30/01	
		Pediatric Gastroenterology	11/7/01	
		Pediatric Hematology/Oncology	11/12/97	
		Pediatric Infectious Disease	11/18/98	
		Pediatric Nephrology	4/30/01	
		Pediatric Pulmonology	11/12/97	
Physical Medicine & Rehabilitation	Rehabilitation Medicine		9/11/98	
		Spinal Cord Injury Medicine	9/16/99	
Preventive Medicine		Occupational Medicine	11/24/99	
Psychiatry	Psychiatry		7/19/99	
		Child & Adolescent Psychiatry	6/30/99	
		Forensic Psychiatry	12/28/99	
		Geriatric Psychiatry	7/19/99	
Radiation Oncology	Radiation Oncology		10/23/97	
Radiology	Diagnostic Radiology		5/6/97	
		Neuroradiology	5/6/97	
		Pediatric Radiology	5/6/97	
		Vascular/Interventional Radiology	5/8/97	
			5/7/01	
			Nuclear Medicine	5/7/01
Surgery	General Surgery		11/19/99	
		Surgical Critical Care	8/7/00	
	Neurosurgery		4/16/96	
		Orthopaedics	3/27/00	
	Otolaryngology	Hand Surgery	1/30/98	
			3/24/00	
	Surgery		Pediatric Surgery	4/13/01
			Plastic Surgery	11/26/97
			Thoracic & Cardiovascular Surgery	2/1/00
		Urology		6/25/99

UAB UNIVERSITY HOSPITAL STATISTICAL HIGHLIGHTS

<u>Patient Origin</u>	<u>1999-2000</u>	<u>Percent of Total</u>	<u>2000-01</u>	<u>Percent of Total</u>
Jefferson County	19,435	45%	17,497	43%
Other Alabama Counties	19,992	47%	19,531	48%
Out of State	3,475	8%	3,662	9%

<u>Patient Information</u> ¹	<u>1999-2000</u>	<u>2000-01</u>
Discharges ¹	42,902	40,690
Babies Delivered	3,329	3,454
Total Inpatient Days of Care (Discharge Days) ¹	251,341	251,815
Emergency Department Visits	41,172	43,294
Daily Average Number of Patients ¹	687	690
Average Length of Patient Stay ¹	5.86 days	6.19 days
Average Percentage of Occupancy ^{1,2}	75.7%	75.6%
Average Beds in Service ³	828	833
Beds in Service, End-of-Year	828	821

Financial Information

Salaries and Benefits	\$241,275,000	\$256,287,000
Total Expenses ⁴	\$585,128,000	\$628,729,000
Average Daily Expenses	\$1,599,000	\$1,723,000

¹ To maintain consistency in data reporting, patient information includes all inpatient discharges.

² Occupancy percentage calculation includes 79 sick baby bassinets.

³ The UAB University Hospital is currently licensed for 908 beds.

⁴ Includes transfers for depreciation and interest.

Source: UAB University Hospital Financial Management; financial data from audited financial statements.

UAB LIBRARY STATISTICS

	<u>Mervyn H. Sterne Library</u>	<u>Lister Hill Library of the Health Sciences*</u>
Volumes	1,409,945	358,858
Titles	749,831 ¹	103,614
Current Periodical Subscriptions	2,125	1,809
Archival Collections		
University Records Series	NA	210
Manuscript Collections	NA	102
Employees (Full-time Equivalents)		
Professional	19.7	37.5
Technical/Clerical	39.0	32.0
Student Assistants	14.0	6.5
Total Employees	72.7	76.0
Total Library Operating Expenditures	\$5,219,609	\$4,947,325
Library Physical Facilities		
Net Assignable Area (square feet)	154,000	89,980
Shelving Capacity (linear feet)	190,212	56,577 ²
Seating Capacity	1,100	917
Total Hours Open per Week	86 (7-day period)	94.5 (7-day period)
Classification System	Library of Congress	National Library of Medicine; Library of Congress (nonmedical)

* Includes Reynolds Historical Library and the UAB Archives, reported separately in previous years.

¹ Estimated title count.

² Includes shelving at West Pavilion Library (LHL satellite) at UAB University Hospital.

Source: Library Directors

ALUMNI INFORMATION

UAB has granted over 82,000 degrees since becoming an autonomous campus within the University of Alabama System in 1969. Graduates of UAB are encouraged to participate in organized alumni activities and to support the University through alumni associations affiliated with the professional schools and through the UAB National Alumni Society, which represents all graduates of UAB. The alumni associations, including the UAB National Alumni Society, are supported by annual membership dues; alumni gifts are used to enhance the work of the University's schools, departments, and programs.

In fiscal year 2000-01, 3,378 UAB alumni provided gifts and other forms of alumni support. Alumni giving over the past ten years totals \$11.67 million. With more than 3,000 current active members, the UAB National Alumni Society is the largest alumni organization representing UAB graduates. Governed by an elected Board of Directors, the UAB National Alumni Society sponsors a number of activities and programs designed to appeal to graduates, which ultimately promote the welfare and excellence of UAB.

Graduates of all schools are eligible to join the UAB National Alumni Society and to receive the privileges of active membership. These privileges include use of Mervyn H. Sterne and Lister Hill Libraries; free career counseling; discounts on season tickets to UAB athletic events; discounts on season tickets to Alys Robinson Stephens Center events; discounts on University Bookstore's regularly priced promotional merchandise; use of the UAB gymnasium; discounts on selected UAB Special Studies courses; a visitor parking pass; a subscription to *UAB Magazine*; and advance notice of alumni activities, trips, and lectures.

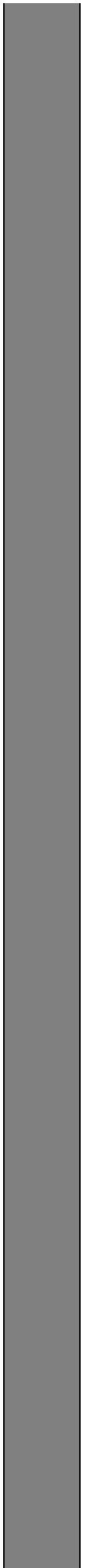
The Society supports merit scholarship programs for students, including those provided by the Joseph F. Volker Endowment, the Alumni Achievement Endowment, the Distinguished Alumni Endowment, the Dr. Charles A. McCallum International Scholarship, and the Alys Robinson Stephens Scholarship for the Performing Arts as well as over 35 License to Learn Scholarships made possible by the sale of UAB license plates. The Society also awards grants to various UAB units and programs including the Mervyn H. Sterne Library, Lister Hill Library, the UAB Athletic Department, UAB Ambassadors, Interfraternity and Panhellenic Councils, Student Leadership Conference, Outstanding Advisor Award, and others.

Source: Office of Alumni Affairs

DISTINGUISHED ALUMNI AWARD

1991 - Lawrence J. DeLucas, O.D., Ph.D.
1992 - Richard M. Scrushy
1993 - Helene Griffin Robertson
1994 - William L. Roper, M.D., M.P.H.
1995 - James H. Woodward, Ph.D.
1996 - Kenneth L. Jackson
1997 - Charles A. McCallum, D.M.D., M.D.
1998 - Martha Warren Bidez, Ph.D.
1999 - Jean A. Kelley, Ed.D.
2000 - Robert C. Chapman
2001 - Tommie G. Cummings

Student Information



**UAB FALL SEMESTER 2001 ENROLLMENT
BY SCHOOL AND LEVEL**

<u>School</u>	<u>Under-graduate</u>	<u>Graduate</u>	<u>First Prof.</u>	<u>Advanced Prof.</u>	<u>Total</u>
Arts and Humanities	1,025	43			1,068
Business*	1,650	362			2,012
Dentistry	12	2	229	82	325
Education**	799	764			1,563
Engineering	485	252			737
Health Related Professions*	340	530			870
Joint Health Sciences		347			347
Medicine	10		590	886	1,486
Natural Sciences and Mathematics	1,406	191			1,597
Nursing	217	228			445
Optometry		24	156	13	193
Public Health		348			348
Social and Behavioral Sciences	1,683	164			1,847
Unclassified***	2,327	511			2,838
TOTAL	9,954	3,766	975	981	15,676

Note: Fall 2001 is UAB's first term on the semester calendar.

*Included in the School of Health Related Professions graduate count are 30 students enrolled in the Administration Health Services program offered jointly by the School of Business and the School of Health Related Professions.

**Does not include 81 graduate students enrolled in Israel.

***Unclassified includes General Studies, Pre Health Related Professions, and nondegree graduate students.

Source: UAB Headcount Enrollment Report, Fall Semester 2001-02

**UAB FALL SEMESTER 2001 ENROLLMENT
FULL-TIME AND PART-TIME BY RACE AND SEX**

	<u>Non-Resident Alien</u>		<u>Black</u>		<u>American Indian</u>		<u>Asian or Pacific Islander</u>		<u>Hispanic</u>		<u>White</u>		<u>Unknown</u>		<u>Total</u>	<u>Total</u>	<u>Total</u>
	<u>Male</u>	<u>Female</u>	<u>Male</u>	<u>Female</u>	<u>Male</u>	<u>Female</u>	<u>Male</u>	<u>Female</u>	<u>Male</u>	<u>Female</u>	<u>Male</u>	<u>Female</u>	<u>Male</u>	<u>Female</u>	<u>Male</u>	<u>Female</u>	
FULL-TIME STUDENTS																	
Undergraduate	155	92	660	1,531	8	10	92	137	30	39	1,701	2,155	76	92	2,722	4,056	6,778
Graduate	292	150	47	169	3	3	28	35	10	7	470	667	13	13	863	1,044	1,907
First Professional	5	1	27	40	4	6	54	63	9	3	456	301	5	1	560	415	975
TOTAL FULL-TIME	452	243	734	1,740	15	19	174	235	49	49	2,627	3,123	94	106	4,145	5,515	9,660
PART-TIME STUDENTS																	
Undergraduate	47	41	240	556	10	6	36	38	8	21	999	1,079	45	50	1,385	1,791	3,176
Graduate	62	34	81	272	2	7	19	22	2	12	448	871	11	16	625	1,234	1,859
First Professional	0	0	0	0	0	0	0	0	0	0	0	0	0	0	0	0	0
TOTAL PART-TIME	109	75	321	828	12	13	55	60	10	33	1,447	1,950	56	66	2,010	3,025	5,035
TOTAL FULL-TIME, PART-TIME STUDENTS																	
Undergraduate	202	133	900	2,087	18	16	128	175	38	60	2,700	3,234	121	142	4,107	5,847	9,954
Graduate	354	184	128	441	5	10	47	57	12	19	918	1,538	24	29	1,488	2,278	3,766
First Professional	5	1	27	40	4	6	54	63	9	3	456	301	5	1	560	415	975
GRAND TOTAL	561	318	1,055	2,568	27	32	229	295	59	82	4,074	5,073	150	172	6,155	8,540	14,695 *

*Total does not include 981 full-time advanced professionals or 81 graduate students enrolled in Israel.

Source: Institutional Studies and Services, Fall Semester 2001 Compliance Report

UAB FALL SEMESTER 2001 ENROLLMENT PROFILE

By Class*

<u>Undergraduate</u>		<u>Graduate/First Professional</u>	
Entering Freshmen	1,301	Master's	2,224
Other Freshmen	1,081	Postmaster's	131
Sophomores	1,722	Doctoral	853
Juniors	1,990	Postdoctoral	7
Seniors	3,089	Nondegree	551
Other (Transient, Temporary, Special, Postbaccalaureate)	771	First Professional	975
TOTAL	9,954	TOTAL	4,741

Average Student Age*

Entering Freshmen	18.8
Undergraduates	24.2
Graduates	31.3
First Professionals	25.6
All UAB	26.1

By Permanent Residence and Level*

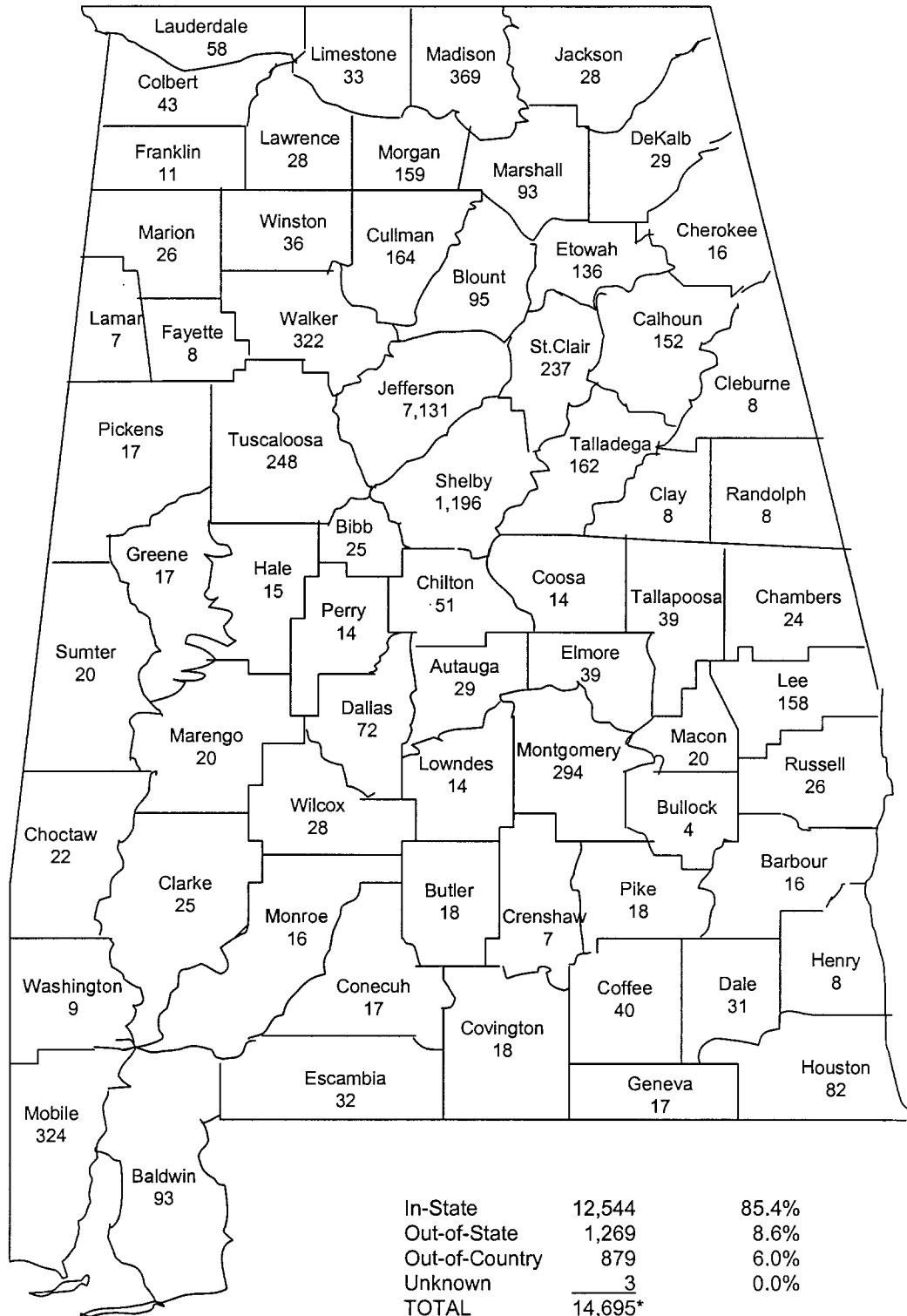
	<u>Under- graduate</u>	<u>Graduate</u>	<u>First Professional</u>	<u>Total</u>
Jefferson County	5,203	1,621	307	7,131
Other Metro Area Counties**	1,337	445	68	1,850
Other Alabama Counties	2,533	572	458	3,563
Out-of-State	544	589	136	1,269
Out-of-Country	335	538	6	879
Unknown	2	1	0	3
TOTAL	9,954	3,766	975	14,695

*Totals do not include 981 advanced professionals or 81 graduate students enrolled in Israel.

**Blount, Shelby, St. Clair, and Walker counties.

Source: Institutional Studies and Services

UAB IN-STATE STUDENTS BY COUNTY, FALL 2001



*Total does not include 981 advanced professionals or 81 graduate students enrolled in Israel.

UAB FALL ENROLLMENT BY SCHOOL 1995-2001

	<u>1995</u>	<u>1996</u>	<u>1997</u>	<u>1998</u>	<u>1999</u>	<u>2000</u>	<u>2001</u>
Arts and Humanities	838	794	800	832	926	983	1,068
Business	1,875	1,991	2,018	2,005	1,963	2,016	2,012
Dentistry	317	308	310	311	314	333	325
Education	1,816	1,861	1,811	1,764	1,687	1,664	1,563
Engineering	751	755	716	684	722	744	737
Health Related Professions	714	759	780	835	825	821	870
Joint Health Sciences	360	354	358	348	364	358	347
Medicine	1,484	1,475	1,520	1,548	1,549	1,501	1,486
Natural Sciences and Mathematics	1,552	1,412	1,347	1,215	1,135	1,655	1,597
Nursing	781	691	573	561	519	456	445
Optometry	179	184	188	184	194	193	193
Public Health	326	358	372	384	363	335	348
Social and Behavioral Sciences	1,821	1,779	1,742	1,744	1,852	1,890	1,847
Unclassified	<u>3,638</u>	<u>3,444</u>	<u>3,315</u>	<u>3,601</u>	<u>3,668</u>	<u>2,972</u>	<u>2,838</u>
TOTAL	16,452	16,165	15,850	16,016	16,081	15,921	15,676

Source: UAB Headcount Enrollment Reports, 1995-2001

UAB FALL ENROLLMENT BY CLASS 1995-2001

	<u>1995</u>	<u>1996</u>	<u>1997</u>	<u>1998</u>	<u>1999</u>	<u>2000</u>	<u>2001</u>
Entering Freshmen	1,182	1,131	1,197	1,175	1,233	1,314	1,301
Other Freshmen	1,041	1,122	1,023	1,094	1,080	1,116	1,081
Sophomores	1,715	1,698	1,776	1,837	1,748	1,705	1,722
Juniors	2,184	2,113	2,117	2,144	2,178	2,049	1,990
Seniors	3,569	3,661	3,360	3,312	3,293	3,298	3,089
Other Undergraduates	1,056	967	885	871	888	849	771
Master's	2,014	2,037	2,097	2,139	2,008	2,095	2,224
Postmaster's	93	83	64	97	83	102	131
Doctoral	916	916	913	854	901	876	853
Postdoctoral	0	0	0	0	1	3	7
Nondegree Graduates	723	559	512	531	681	565	551
First Professionals	1,009	987	989	1,002	1,004	979	975
Advanced Professionals	<u>950</u>	<u>891</u>	<u>917</u>	<u>960</u>	<u>983</u>	<u>970</u>	<u>981</u>
TOTAL	16,452	16,165	15,850	16,016	16,081	15,921	15,676

Source: Institutional Studies and Services

UAB FALL ENROLLMENT BY STUDENT LEVEL 1969-2001

	<u>Para- professional**</u>	<u>Under- graduate</u>	<u>Graduate</u>	<u>First Professional</u>	<u>Advanced Professional</u>	<u>Total</u>
Fall, 1969	88	3,881	564	560	288	5,381
Fall, 1970	154	5,001	745	603	280	6,783
Fall, 1971	222	5,320	881	674	342	7,439
Fall, 1972	232	6,233	1,272	749	482	8,968
Fall, 1973	283	6,547	1,379	819	443	9,471
Fall, 1974	435	6,821	1,849	778	461	10,344
Fall, 1975	512	8,123	2,226	780	478	12,119
Fall, 1976	512	8,471	2,192	867	497	12,539
Fall, 1977	538	8,622	2,422	958	582	13,122
Fall, 1978	624	9,004	2,528	1,071	572	13,799
Fall, 1979	565	9,229	2,757	1,070	593	14,214
Fall, 1980	484	9,618	2,684	1,068	594	14,448
Fall, 1981	523	9,790	2,537	1,017	607	14,474
Fall, 1982	498	10,170	2,280	946	636	14,530
Fall, 1983	489	10,426	2,165	916	683	14,679
Fall, 1984	482	9,914	2,228	893	683	14,200
Fall, 1985	386	9,773	2,445	907	690	14,201
Fall, 1986	376	9,594	2,675	893	710	14,248
Fall, 1987	321	9,543	2,739	876	766	14,245
Fall, 1988	334	9,723	2,939	890	769	14,655
Fall, 1989	365	10,251	3,154	922	816	15,508
Fall, 1990	397	10,688	3,335	936	930	16,286
Fall, 1991	439	11,313	3,244	926	862	16,784
Fall, 1992	442	11,234	3,126	940	916	16,658
Fall, 1993*	472	11,186	3,290	965	875	16,788
Fall, 1994	137	10,668	3,571	986	890	16,252
Fall, 1995	0	10,747	3,746	1,009	950	16,452
Fall, 1996	0	10,692	3,595	987	891	16,165
Fall, 1997	0	10,358	3,586	989	917	15,850
Fall, 1998	0	10,433	3,621	1,002	960	16,016
Fall, 1999	0	10,420	3,674	1,004	983	16,081
Fall, 2000	0	10,331	3,641	979	970	15,921
Fall, 2001	0	9,954	3,766	975	981	15,676

*Beginning in 1993, students taking classes off campus are included in the headcount enrollment.

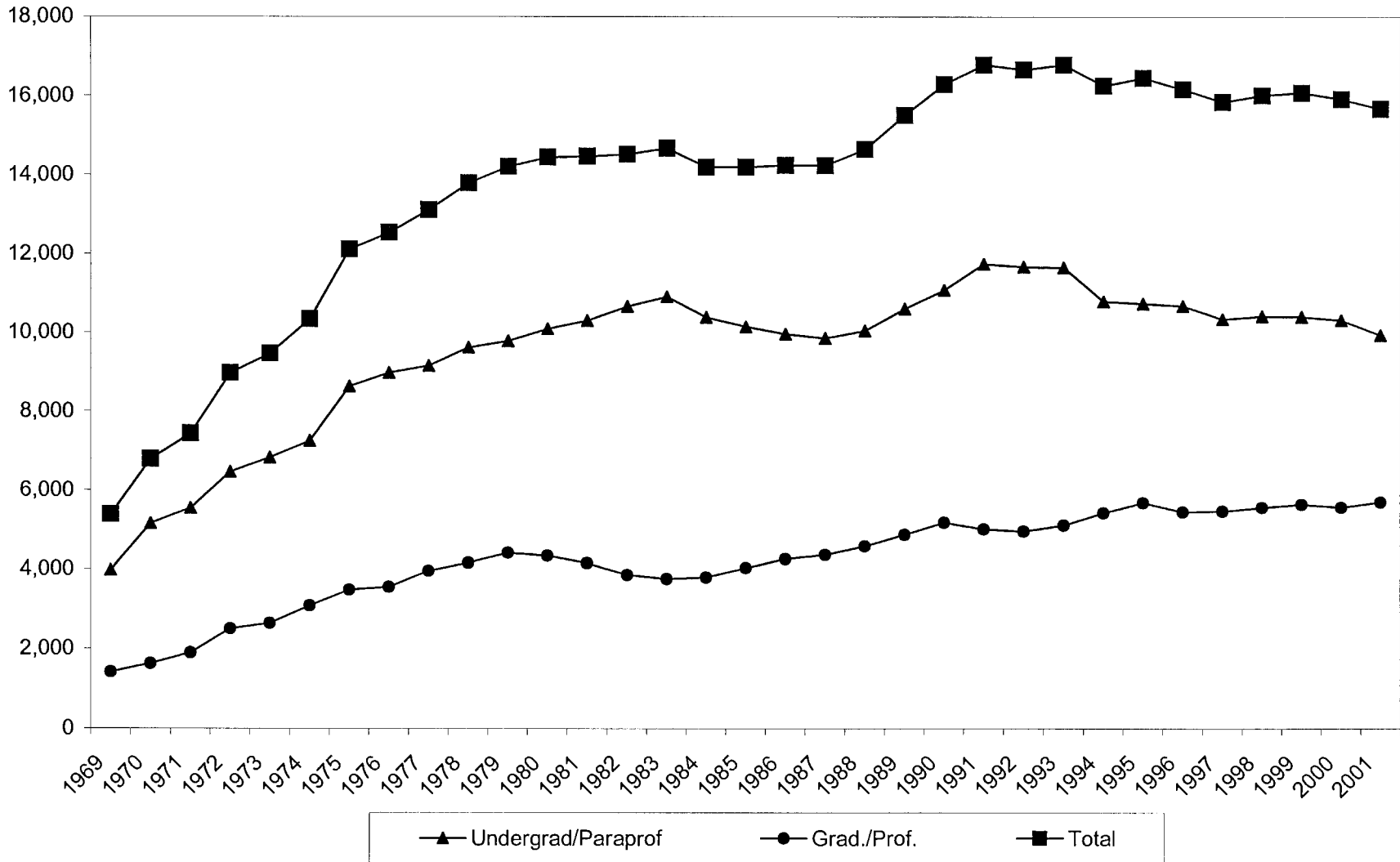
**The certificate programs in Health Related Professions were phased out beginning in 1994. Dental Assisting and Dental Lab Tech were eliminated in 1995; Dental Assisting was reinstated in Fall 2000. Students in the certificate programs in EMT and reinstated Dental Assisting are included with undergraduates.

Source: UAB Headcount Enrollment Reports 1969-2001

UNIVERSITY OF ALABAMA AT BIRMINGHAM

Fall Headcount Enrollment 1969-2001

37



Note: Beginning in Fall 1993, figures include students enrolled off campus.

**UAB FALL ENROLLMENT
FULL-TIME AND PART-TIME BY SEX
1985-2001**

<u>Year</u>	<u>Full-time</u>		<u>Part-time</u>		<u>Total</u>		<u>Percent Part-time</u>
	<u>Men</u>	<u>Women</u>	<u>Men</u>	<u>Women</u>	<u>Men</u>	<u>Women</u>	
1985	3,603	4,124	2,594	3,190	6,197	7,314	43%
1986	3,693	4,082	2,514	3,249	6,207	7,331	43%
1987	3,666	4,220	2,439	3,154	6,105	7,374	41%
1988	3,786	4,329	2,492	3,279	6,278	7,608	42%
1989	3,930	4,521	2,650	3,591	6,580	8,112	42%
1990	4,187	4,813	2,677	3,679	6,864	8,492	41%
1991	4,390	5,023	2,759	3,750	7,149	8,773	41%
1992	4,418	5,091	2,699	3,534	7,117	8,625	40%
1993 *	4,560	5,201	2,678	3,474	7,238	8,675	39%
1994	4,460	5,146	2,486	3,270	6,946	8,416	37%
1995	4,538	5,334	2,367	3,263	6,905	8,597	36%
1996	4,464	5,467	2,275	3,068	6,739	8,535	35%
1997	4,561	5,385	2,109	2,878	6,670	8,263	33%
1998	4,412	5,657	2,065	2,922	6,477	8,579	33%
1999	4,419	5,778	1,977	2,924	6,396	8,702	32%
2000	4,472	5,920	1,805	2,754	6,277	8,674	30%
2001	4,145	5,515	2,010	3,025	6,155	8,540	34%

**UAB FALL ENROLLMENT BY PERMANENT RESIDENCE
1997-2001**

	<u>1997</u>	<u>1998</u>	<u>1999</u>	<u>2000</u>	<u>2001</u>
Jefferson County	8,600	8,304	8,062	7,362	7,131
Other Metro Area Counties**	1,922	2,048	2,034	1,963	1,850
Other Alabama Counties	2,840	3,125	3,373	3,599	3,563
Out-of-State	948	879	883	1,221	1,269
Out-of-Country	621	698	744	802	879
Unknown	<u>2</u>	<u>2</u>	<u>2</u>	<u>4</u>	<u>3</u>
TOTAL	14,933	15,056	15,098	14,951	14,695

Note: Totals do not include advanced professionals or graduate students enrolled in Israel.

*Beginning in 1993, students taking classes off campus are included in the headcount enrollment.

**Blount, Shelby, St. Clair, and Walker counties.

Source: Institutional Studies and Services

**UAB CREDIT HOUR PRODUCTION
FALL 2001**

	Lower Division Undergrad.¹	Upper Division Undergrad.²	Graduate 1³	Graduate 2⁴	Total
Arts and Humanities	24,546	4,432	497	21	29,496
Business	5,959	7,854	2,910	76	16,799
Dentistry ⁵	168				168
Education	1,742	5,608	5,189	208	12,747
Engineering	1,537	2,018	1,532	566	5,653
Health Related Professions	612	4,453	6,409	226	11,700
Joint Health Sciences		75	41	4,792	4,908
Medicine ⁵	296	9			305
Natural Sciences and Mathematics	24,954	3,065	1,318	777	30,114
Nursing		2,557	984	213	3,754
Physiological Optics		2	47	232	281
Public Health			3,454	633	4,087
Social and Behavioral Sciences	18,324	7,253	882	633	27,092
Graduate School			51	415	466
Provost's Office ⁶	216				216
ROTC/Cooperative Education	612	180			792
TOTAL	78,966	37,506	23,314	8,792	148,578

¹Includes courses numbered 095-299.

²Includes courses numbered 300-499.

³Includes courses numbered 500-699 except in Education, where courses numbered 700-739 are included.

⁴Includes courses numbered 700-799.

⁵Undergraduate credit hours in Medicine are generated by the EMT program and in Dentistry are generated by the Dental Assisting program. First professional programs in Medicine, Dentistry, and Optometry do not generate credit hours.

⁶Includes interdisciplinary hours (UNIV) generated by instructors not affiliated with an academic unit.

Source: Institutional Studies and Services, ACHE Credit Hour Production Reports

UAB ANNUAL CREDIT HOUR PRODUCTION BY SCHOOL
1994-95 through 2000-01

	<u>1994-95</u>	<u>1995-96</u>	<u>1996-97</u>	<u>1997-98</u>	<u>1998-99</u>	<u>1999-2000</u>	<u>2000-01</u>
ARTS AND HUMANITIES							
Lower Division Undergraduate	48,583	49,597	50,559	50,789	51,930	52,629	52,500
Upper Division Undergraduate	7,436	7,554	8,278	8,131	8,667	10,436	12,140
Graduate 1	1,268	1,210	1,090	1,079	1,035	1,200	1,048
Graduate 2	0	3	2	0	0	18	27
Total	<u>57,287</u>	<u>58,364</u>	<u>59,929</u>	<u>59,999</u>	<u>61,632</u>	<u>64,283</u>	<u>65,715</u>
BUSINESS							
Lower Division Undergraduate	13,896	13,638	13,647	13,878	14,769	14,175	14,418
Upper Division Undergraduate	18,995	19,336	18,532	19,191	19,061	18,528	20,412
Graduate 1	6,216	7,449	9,147	8,490	7,203	6,885	7,662
Graduate 2	238	292	258	211	219	189	197
Total	<u>39,345</u>	<u>40,715</u>	<u>41,584</u>	<u>41,770</u>	<u>41,252</u>	<u>39,777</u>	<u>42,689</u>
DENTISTRY							
Lower Division Undergraduate	430	0	0	0	0	0	623
Upper Division Undergraduate	852	331	0	0	0	0	0
Total	<u>1,282</u>	<u>331</u>	<u>0</u>	<u>0</u>	<u>0</u>	<u>0</u>	<u>623</u>
EDUCATION							
Lower Division Undergraduate	5,110	4,347	4,804	4,609	5,067	5,195	4,785
Upper Division Undergraduate	16,006	16,274	16,847	16,669	16,743	16,729	16,003
Graduate 1	18,133	18,488	17,037	16,992	18,184	18,795	20,871
Graduate 2	649	679	716	656	714	831	579
Total	<u>39,898</u>	<u>39,788</u>	<u>39,404</u>	<u>38,926</u>	<u>40,708</u>	<u>41,550</u>	<u>42,238</u>
ENGINEERING							
Lower Division Undergraduate	3,748	4,118	3,538	3,219	3,830	2,899	3,411
Upper Division Undergraduate	4,496	5,063	5,982	6,160	5,377	6,167	5,831
Graduate 1	2,224	1,523	1,322	1,378	1,458	2,069	3,035
Graduate 2	1,464	1,509	1,850	1,719	1,780	1,931	1,908
Total	<u>11,932</u>	<u>12,213</u>	<u>12,692</u>	<u>12,476</u>	<u>12,445</u>	<u>13,066</u>	<u>14,185</u>
HEALTH RELATED PROFESSIONS							
Lower Division Undergraduate	3,652	2,289	498	1,058	1,318	960	1,431
Upper Division Undergraduate	11,991	14,054	13,988	13,697	13,942	11,970	11,520
Graduate 1	11,695	11,200	11,874	12,606	13,553	14,267	16,090
Graduate 2	452	569	605	489	501	544	597
Total	<u>27,790</u>	<u>28,112</u>	<u>26,965</u>	<u>27,850</u>	<u>29,314</u>	<u>27,741</u>	<u>29,638</u>
JOINT HEALTH SCIENCES							
Upper Division Undergraduate	0	6	33	0	51	36	48
Graduate 1	443	385	370	389	380	272	307
Graduate 2	14,377	14,654	13,521	13,459	12,825	13,207	12,777
Total	<u>14,820</u>	<u>15,045</u>	<u>13,924</u>	<u>13,848</u>	<u>13,256</u>	<u>13,515</u>	<u>13,132</u>
MEDICINE (EMT PROGRAM)							
Lower Division Undergraduate	0	314	2,366	2,442	2,348	1,769	1,239
Upper Division Undergraduate	0	0	7	6	1	1	1
Total	<u>0</u>	<u>314</u>	<u>2,373</u>	<u>2,448</u>	<u>2,349</u>	<u>1,770</u>	<u>1,240</u>

UAB ANNUAL CREDIT HOUR PRODUCTION BY SCHOOL (CONTINUED)

	<u>1994-95</u>	<u>1995-96</u>	<u>1996-97</u>	<u>1997-98</u>	<u>1998-99</u>	<u>1999-2000</u>	<u>2000-01</u>
NATURAL SCIENCES AND MATHEMATICS							
Lower Division Undergraduate	61,138	62,464	60,873	59,879	59,378	60,805	60,261
Upper Division Undergraduate	7,962	7,681	7,643	7,749	7,424	7,166	6,940
Graduate 1	2,779	3,304	2,995	2,708	2,595	2,941	3,287
Graduate 2	<u>2,224</u>	<u>2,138</u>	<u>1,976</u>	<u>1,856</u>	<u>1,769</u>	<u>1,680</u>	<u>2,088</u>
Total	<u>74,103</u>	<u>75,587</u>	<u>73,487</u>	<u>72,192</u>	<u>71,166</u>	<u>72,592</u>	<u>72,576</u>
NURSING							
Lower Division Undergraduate	2,175	0	0	0	0	0	0
Upper Division Undergraduate	10,286	14,491	11,818	9,087	9,171	7,895	7,685
Graduate 1	5,539	5,490	4,878	5,148	5,765	5,114	3,749
Graduate 2	<u>1,559</u>	<u>1,786</u>	<u>1,513</u>	<u>1,269</u>	<u>1,073</u>	<u>908</u>	<u>856</u>
Total	<u>19,559</u>	<u>21,767</u>	<u>18,209</u>	<u>15,504</u>	<u>16,009</u>	<u>13,917</u>	<u>12,290</u>
OPTOMETRY							
Graduate 1	77	60	113	163	47	81	99
Graduate 2	<u>247</u>	<u>328</u>	<u>423</u>	<u>445</u>	<u>300</u>	<u>499</u>	<u>611</u>
Total	<u>324</u>	<u>388</u>	<u>536</u>	<u>608</u>	<u>347</u>	<u>580</u>	<u>710</u>
PUBLIC HEALTH							
Upper Division Undergraduate	373	87	75	24	36	30	0
Graduate 1	7,165	7,731	8,907	9,218	9,509	8,643	7,560
Graduate 2	<u>1,472</u>	<u>1,785</u>	<u>2,101</u>	<u>2,227</u>	<u>2,176</u>	<u>2,213</u>	<u>2,138</u>
Total	<u>9,010</u>	<u>9,603</u>	<u>11,083</u>	<u>11,469</u>	<u>11,721</u>	<u>10,886</u>	<u>9,698</u>
SOCIAL AND BEHAVIORAL SCIENCES							
Lower Division Undergraduate	48,860	46,739	43,607	41,345	41,247	39,481	37,999
Upper Division Undergraduate	17,075	18,181	17,328	17,405	18,512	19,869	20,984
Graduate 1	2,869	2,783	2,682	2,311	2,614	2,689	2,491
Graduate 2	<u>2,326</u>	<u>2,104</u>	<u>2,325</u>	<u>2,288</u>	<u>2,051</u>	<u>2,036</u>	<u>1,773</u>
Total	<u>71,130</u>	<u>69,807</u>	<u>65,942</u>	<u>63,349</u>	<u>64,424</u>	<u>64,075</u>	<u>63,247</u>
ROTC/COOPERATIVE ED/IITS							
Lower Division Undergraduate	319	422	365	512	942	1,522	1,846
Upper Division Undergraduate	228	225	270	276	270	381	405
Graduate 1	<u>3</u>	<u>3</u>	<u>0</u>	<u>0</u>	<u>0</u>	<u>0</u>	<u>0</u>
Total	<u>550</u>	<u>650</u>	<u>635</u>	<u>788</u>	<u>1,212</u>	<u>1,903</u>	<u>2,251</u>
GRADUATE SCHOOL							
Graduate 1	0	0	0	0	57	90	60
Graduate 2	<u>0</u>	<u>0</u>	<u>480</u>	<u>968</u>	<u>1,155</u>	<u>1,072</u>	<u>1,197</u>
Total	<u>0</u>	<u>0</u>	<u>480</u>	<u>968</u>	<u>1,212</u>	<u>1,162</u>	<u>1,257</u>
TOTAL UAB							
Lower Division Undergraduate	187,911	183,928	180,257	177,731	180,829	179,435	178,513
Upper Division Undergraduate	95,700	103,283	100,801	98,395	99,255	99,208	101,969
Graduate 1	58,411	59,626	60,415	60,482	62,400	63,046	66,259
Graduate 2	<u>25,008</u>	<u>25,847</u>	<u>25,770</u>	<u>25,587</u>	<u>24,563</u>	<u>25,128</u>	<u>24,748</u>
GRAND TOTAL	367,030	372,684	367,243	362,195	367,047	366,817	371,489

Note: Figures include September and December Miniterms. First professional programs in Dentistry, Medicine, and Optometry do not generate credit hours.

Source: ISS, ACHE Credit Hour Production Reports, Fall 1994 through Summer 2001

DEGREES OFFERED AT UAB

<u>CIP Code*/Degree Program</u>	<u>Undergraduate Degrees</u>	<u>Graduate and Professional Degrees</u>
SCHOOL OF ARTS AND HUMANITIES		
05.0201 African American Studies	B.A.	
50.0703 Art History		M.A. ¹
09.0101 Communication Studies	B.A.	
23.0101 English	B.A.	M.A.
16.0901 French	B.A.	
50.0901 Music	B.A.	
38.0101 Philosophy	B.A.	
16.0905 Spanish	B.A.	
50.0701 Art	B.A., B.F.A.	
50.0101 Theatre	B.A.	
SCHOOL OF BUSINESS		
52.0301 Accounting	B.S.	M.Ac.
51.0701 Administration/Health Services		Ph.D.
52.0201 Business Administration		M.B.A.
52.0601 Economics	B.S.	
52.0801 Finance	B.S.	
52.0299 Industrial Distribution	B.S.	
52.0201 Management	B.S.	
52.1401 Marketing	B.S.	
SCHOOL OF DENTISTRY		
51.0601 Dental Assisting	Certificate	
51.0401 Dentistry		D.M.D.
51.0501 Dentistry		M.S.
SCHOOL OF EDUCATION		
51.9999 Allied Health Sciences		M.A. in Education
13.1302 Arts Education		M.A. in Education
13.1101 Counseling		M.A.
13.1204 Early Childhood Education	B.S.	M.A. in Education, Ph.D.
13.0101 Education		Ed.S.
13.0401 Educational Leadership		M.A. in Education, Ed.S., Ed.D. ¹ , Ph.D. ¹
13.1202 Elementary Education	B.S.	M.A. in Education
13.1307 Health Education	B.S.	M.A. in Education
31.0599 Health Education/Promotion		Ph.D. ¹
13.1205 High School Education	B.S.	M.A. in Education
13.1314 Physical Education	B.S.	M.A. in Education
13.1001 Special Education	B.S.	M.A. in Education

DEGREES OFFERED AT UAB (CONTINUED)

<u>CIP Code*/Degree Program</u>	<u>Undergraduate Degrees</u>	<u>Graduate and Professional Degrees</u>
SCHOOL OF ENGINEERING		
14.0501 Biomedical Engineering	B.S.B.M.E.	M.S.B.M.E., Ph.D.
14.0801 Civil Engineering	B.S.C.E.	M.S.C.E., Ph.D. ⁷
14.0901 Computer Engineering		Ph.D. ⁸
14.1001 Electrical Engineering	B.S.E.E.	M.S.E.E., Ph.D. ²
14.1401 Environmental Health Engineering		Ph.D.
14.1801 Materials Engineering	B.S.Mt.E.	M.S.Mt.E., Ph.D. ¹
30.9999 Materials Science		Ph.D. ³
14.1901 Mechanical Engineering	B.S.M.E.	M.S.M.E., Ph.D. ²
SCHOOL OF HEALTH RELATED PROFESSIONS		
51.0701 Administration/Health Services		Ph.D.
51.9999 Health Sciences	B.S.	
51.1005 Clinical Laboratory Science		M.S.C.L.S.
26.0609 Clinical Nutrition and Dietetics		M.S.
51.1002 Cytotechnology	B.S.	
19.0503 Dietetic Internship	Certificate (Postbaccalaureate)	
51.9999 Education-Allied Health Sciences		M.A. in Education ⁴
51.0701 Health Administration		M.S.H.A.
51.0799 Health Informatics		M.S.
51.0706 Health Information Management	B.S.	
51.1005 Medical Technology	B.S.	
51.0905 Nuclear Medicine Technology	B.S.	
51.1604 Nurse Anesthesia		M.N.A.
26.0609 Nutrition Sciences		Ph.D.
51.2306 Occupational Therapy		M.S.
51.2308 Physical Therapy		M.S.
51.0907 Radiologic Sciences	B.S.	
51.0908 Respiratory Therapy	B.S.	
51.0807 Surgical Physician Assistant	B.S.	
JOINT HEALTH SCIENCES (Schools of Dentistry and Medicine)		
51.1399 Basic Medical Sciences		M.S.B.M.S.
26.0202 Biochemistry		Ph.D.
26.0401 Cell Biology		Ph.D.
51.1306 Medical Genetics		Ph.D.
26.0501 Microbiology		Ph.D.
26.0608 Neurobiology		Ph.D.
26.0704 Pathology		Ph.D.
26.0705 Pharmacology and Toxicology		Ph.D.
26.0706 Physiology and Biophysics		Ph.D.

DEGREES OFFERED AT UAB (CONTINUED)

<u>CIP Code*/Degree Program</u>	<u>Undergraduate Degrees</u>	<u>Graduate and Professional Degrees</u>
SCHOOL OF MEDICINE		
51.0904 Emergency Medical Technician	Certificate	
51.1201 Medicine		M.D.
SCHOOL OF NATURAL SCIENCES AND MATHEMATICS		
05.0201 African American Studies	B.A.	
27.0301 Applied Mathematics		Ph.D. ⁵
26.0101 Biology	B.S.	M.S., Ph.D.
40.0501 Chemistry	B.S.	M.S., Ph.D.
11.0101 Computer and Information Sciences	B.S.	M.S., Ph.D.
27.0101 Mathematics	B.S.	M.S.
30.0101 Natural Science	B.S.	
40.0801 Physics	B.S.	M.S., Ph.D.
SCHOOL OF NURSING		
51.1601 Nursing	B.S.N.	M.S.N.
51.1608 Nursing		Ph.D.
SCHOOL OF OPTOMETRY		
51.1701 Optometry		O.D.
51.1399 Vision Science		M.S., Ph.D.
SCHOOL OF PUBLIC HEALTH		
26.0615 Biostatistics		M.S., Ph.D.
14.1401 Environmental Health Engineering		Ph.D.
51.2202 Environmental Health Sciences		Ph.D.
51.2203 Epidemiology		Ph.D.
31.0599 Health Education/Promotion		Ph.D. ¹
51.2201 Public Health		M.P.H., M.S.P.H., Dr.P.H.
SCHOOL OF SOCIAL AND BEHAVIORAL SCIENCES		
05.0201 African American Studies	B.A.	
45.0201 Anthropology	B.A.	M.A. ⁶
43.0199 Criminal Justice	B.S.	M.S.C.J.
52.0601 Economics	B.A.	
43.0106 Forensic Science		M.S.F.S.
45.0801 History	B.A.	M.A.
45.9999 International Studies	B.A.	
45.1101 Medical Sociology		Ph.D.
45.1001 Political Science	B.A.	
42.0101 Psychology	B.S.	M.A., Ph.D.
44.0401 Public Administration		M.P.A.
44.0701 Social Work	B.S.S.W.	
45.1101 Sociology	B.A.	M.A.

DEGREES OFFERED AT UAB (CONTINUED)

* Classification of Instructional Programs developed by the U.S. Department of Education's National Center for Education Statistics.

Note: Joint programs are those in which UAB awards the degree. Cooperative programs are those in which students take classes at UAB but the degree is awarded at another institution.

¹ Joint program with the University of Alabama.

² Cooperative program with the University of Alabama and the University of Alabama in Huntsville.

³ Joint interdisciplinary program with the University of Alabama and the University of Alabama in Huntsville.

⁴ Degree offered by the School of Education.

⁵ Joint program with the University of Alabama and the University of Alabama in Huntsville.

⁶ Cooperative program with the University of Alabama.

⁷ Joint program with the University of Alabama in Huntsville.

⁸ Shared program with the University of Alabama in Huntsville.

TOTAL DEGREES AVAILABLE

Certificates		3
Postbaccalaureate	1	
Subbaccalaureate	2	
Baccalaureate		51
Master's		44
Specialist's		2
Doctoral		33
First Professional		<u>3</u>
Total		136

UAB DEGREES AWARDED BY SCHOOL
1969-70 through 2000-01¹

	1969-70									1999		Grand
	- 1990-91	1991-92	1992-93	1993-94	1994-95	1995-96	1996-97	1997-98	1998-99	- 2000	2000-01	Total
ARTS AND HUMANITIES												
Bachelor's	1,673	145	113	133	133	113	111	116	119	143	162	2,961
Master's	140	11	10	13	10	10	6	10	5	9	9	233
BUSINESS²												
Bachelor's	4,318	351	369	333	301	254	292	237	297	297	321	7,370
Master's	1,167	136	135	143	121	168	202	206	192	165	159	2,794
DENTISTRY												
Certificates	408	9	10	21	13	0	0	0	0	0	0	461
Bachelor's	87	9	9	6	10	9	0	0	0	0	0	130
Master's	130	7	9	10	19	9	14	6	12	11	9	236
First Professional	1,274	50	44	48	53	51	54	55	51	57	54	1,791
EDUCATION³												
Bachelor's	4,068	247	263	238	227	186	204	202	216	191	182	6,224
Master's	8,037	332	303	276	269	314	365	313	306	321	327	11,163
Postmaster's	1,416	34	19	17	58	62	49	26	34	25	31	1,771
Doctorates	33	7	12	7	12	19	14	20	7	15	12	158
ENGINEERING												
Bachelor's	1,621	106	91	49	89	86	85	102	91	82	98	2,500
Master's	350	43	36	49	55	44	47	39	49	30	50	792
Doctorates	15	2	6	4	5	9	8	10	7	7	10	83
HEALTH RELATED PROFESSIONS												
Certificates	7,633	421	425	446	279	21	20	20	21	24	25	9,335
Bachelor's	1,933	134	159	165	156	149	152	171	138	163	158	3,478
Master's	902	74	103	88	97	125	122	128	161	151	174	2,125
Doctorates ²	18	4	3	8	6	5	6	7	4	6	2	69
JOINT HEALTH SCIENCES												
Master's	215	4	8	5	10	9	11	5	8	2	9	286
Doctorates	354	38	43	32	32	44	57	41	51	44	55	791
MEDICINE												
First Professional	3,059	148	166	157	159	162	164	148	166	157	153	4,639

NATURAL SCIENCES AND MATHEMATICS

Bachelor's	2,710	149	154	158	161	178	195	197	187	180	169	4,438
Master's	396	40	37	39	30	33	38	50	36	58	49	806
Doctorates	72	11	11	10	6	17	15	15	13	12	8	190

NURSING

Bachelor's	3,821	116	164	189	209	191	281	143	114	133	110	5,471
Master's	1,751	92	85	79	94	61	101	68	72	90	92	2,585
Doctorates	171	20	19	28	20	13	18	19	8	16	5	337

OPTOMETRY

Bachelor's	287	7	13	5	5	3	1	3	3	1	0	328
Master's	22	2	4	3	2	5	3	5	1	1	3	51
Doctorates	11	0	0	3	1	1	2	1	1	1	1	22
First Professional	561	31	33	33	43	39	38	38	35	40	39	930

PUBLIC HEALTH⁴

Master's	836	68	73	99	115	110	119	130	173	161	141	2,025
Doctorates	32	3	8	8	6	8	11	11	10	15	18	130

SOCIAL AND BEHAVIORAL SCIENCES

47

Bachelor's	3,863	223	269	306	319	387	399	410	363	372	446	7,357
Master's	505	39	39	55	47	52	59	38	40	52	53	979
Doctorates	31	3	6	7	9	10	8	18	13	9	10	124

TOTAL

Certificates	8,041	430	435	467	292	21	20	20	21	24	25	9,796
Bachelor's	24,381	1,487	1,604	1,582	1,610	1,556	1,720	1,581	1,528	1,562	1,646	40,257
Master's	14,451	848	842	859	869	940	1,087	998	1,055	1,051	1,075	24,075
Postmaster's	1,416	34	19	17	58	62	49	26	34	25	31	1,771
Doctorates	737	88	108	107	97	126	139	142	114	125	121	1,904
First Professional	4,894	229	243	238	255	252	256	241	252	254	246	7,360

GRAND TOTAL

53,920	3,116	3,251	3,270	3,181	2,957	3,271	3,008	3,004	3,041	3,144	85,163
--------	-------	-------	-------	-------	-------	-------	-------	-------	-------	-------	--------

¹The federal reporting period for completions is July 1 through June 30.²The Ph.D. degrees awarded in the Administration/Health Services program are awarded jointly by the Schools of Business and Health Related Professions.³Does not include Master's degrees awarded in Israel (86 in 2000-01).⁴Prior to 1980-81, degrees in Public Health were earned in the School of Health Related Professions.

UAB DEGREES CONFERRED JULY 1, 1969 - JUNE 30, 2001

<u>Year*</u>	<u>Bachelor's</u>	<u>Master's</u>	<u>Post Master's</u>	<u>Doctor's</u>	<u>D.M.D., M.D., O.D.</u>	<u>Certificates</u>	<u>Total</u>
1969-1984	14,901	9,244	1,163	334	3,229	5,582	34,453
1984-85	1,379	608	49	41	244	381	2,702
1985-86	1,379	652	52	32	247	346	2,708
1986-87	1,347	625	53	41	237	375	2,678
1987-88	1,406	701	31	54	238	298	2,728
1988-89	1,313	846	20	75	222	266	2,742
1989-90	1,332	804	28	65	233	380	2,842
1990-91	1,324	971	20	95	244	413	3,067
1991-92	1,487	848	34	88	229	430	3,116
1992-93	1,604	842	19	108	243	435	3,251
1993-94	1,582	859	17	107	238	467	3,270
1994-95	1,610	869	58	97	255	292	3,181
1995-96	1,556	940	62	126	252	21	2,957
1996-97	1,720	1,087	49	139	256	20	3,271
1997-98	1,581	998	26	142	241	20	3,008
1998-99	1,528	1,055	34	114	252	21	3,004
1999-2000	1,562	1,051	25	125	254	24	3,041
2000-01	<u>1,646</u>	<u>1,075</u>	<u>31</u>	<u>121</u>	<u>246</u>	<u>25</u>	<u>3,144</u>
Totals Awarded to Date	40,257	24,075	1,771	1,904	7,360	9,796	85,163

Note: Does not include degrees awarded by the School of Education in Israel.

*The federal reporting period for completions is July 1 through June 30.

Source: HEGIS Degrees and Other Formal Awards Conferred and IPEDS Completions Reports

**UAB REQUIRED STUDENT TUITION AND FEES
FALL 2001**

<u>Program/Fee</u>	<u>In-State</u>	<u>Out-of-State</u>
<u>Undergraduate and Graduate Programs</u>		
General Tuition Fee (Per Credit Hour Charges):		
<u>Undergraduates taking courses in:</u>		
Schools other than Health Related Professions, Nursing, or Public Health	\$99	\$198
Health Related Professions	121	242
Nursing	110	220
Public Health	103	206
 <u>Graduates taking courses in:</u>		
Schools other than Health Related Professions, Nursing, or Public Health	\$112	\$224
Health Related Professions	146	292
Nursing	135	270
Public Health	116	232
 Building Fee for students taking courses in:		
Arts and Humanities, Business, Education, Engineering, Natural Sciences and Mathematics, Social and Behavioral Sciences, and Health Related Professions:		
Flat Fee per Semester plus	\$30	\$30
Per Credit Hour Charge	3	3
 Joint Health Sciences, Nursing, Public Health, and Undergraduate Emergency Medicine:		
Flat Fee per Semester	\$30	\$30
 Student Service Fee for all students:		
Flat Fee per Semester plus	\$35	\$35
Per Credit Hour Charge	6	6
 Student Recreation Center Fee for all students:		
Per Credit Hour Charge	\$2	\$2
 Learning Resource Fee for students taking courses in: (Per Credit Hour Charges)		
A&H, NSM, SBS ¹	\$7	\$7
Business, Education, Engineering, and Public Health	11	11
Health Related Professions and Nursing	9	9
Credit-hour courses in schools other than the above	2	2
 <u>Dental Assisting Certificate Program in Dentistry per Semester</u>		
Tuition	\$840	\$1,680
Student Service Fee	107	107
Building Fee	30	30
Student Recreation Center Fee	24	24
Technology Fee	24	24

UAB REQUIRED STUDENT TUITION AND FEES (CONTINUED)

<u>Program/Fee</u>	<u>In-State</u>	<u>Out-of-State</u>
<u>First Professional Programs</u>		
Dentistry per Quarter:		
General Tuition	\$2,197	\$6,591
Building Fee	294	294
Student Recreation Center Fee	24	24
Student Service Fee	95	95
Technology Fee	74	74
Medicine per Year:		
General Tuition	\$7,564	\$22,692
Building Fee	879	879
Student Recreation Center Fee	72	72
Student Service Fee	286	286
Optometry per Quarter:		
General Tuition	\$1,795	\$5,385
Building Fee	365	365
Student Recreation Center Fee	24	24
Student Service Fee	95	95
Technology Fee	24	24

TOTAL ANNUAL REQUIRED TUITION AND FEES FOR FULL-TIME STUDENTS²

	<u>In-State</u>	<u>Out-of-State</u>
Undergraduates taking 30 semester credit hours per year in:		
A&H, NSM, SBS ¹	\$3,640	\$6,610
Business, Education, and Engineering	3,760	6,730
Health Related Professions	4,360	7,990
Nursing	3,940	7,240
Undergraduate Emergency Medicine	3,400	6,370
Graduate students taking 24 semester credit hours per year in:		
A&H, NSM, SBS ¹	\$3,250	\$5,938
Business, Education, and Engineering	3,346	6,034
Health Related Professions	4,114	7,618
Nursing	3,778	7,018
Public Health	3,370	6,154
All other Graduate Programs	3,058	5,746
Dental Assisting Students ³	\$3,075	\$5,595
First Professionals in:		
Dentistry ⁴	\$8,052	\$21,234
Medicine	8,801	23,929
Optometry ⁴	6,909	17,679

¹Arts and Humanities, Natural Sciences & Mathematics, and Social & Behavioral Sciences

²Reflects annual charges for required fees indicated above. Additional fees may apply.

³Year-round program, assumes three terms (fall, spring and summer) per year.

⁴Assumes three quarters per year.

Source: University of Alabama Board of Trustees Tuition and Fee Resolutions

**UAB STUDENT AID FUNDS AVAILABLE
1994-95 through 2000-01***

	<u>1994-95</u>	<u>1995-96</u>	<u>1996-97</u>	<u>1997-98</u>	<u>1998-99</u>	<u>1999-2000</u>	<u>2000-01</u>
College Work Study	\$1,525,064	\$1,575,709	\$1,696,886	\$1,175,607	\$1,117,156	\$1,187,473	\$1,107,557
Federal Perkins Loan	1,878,519	2,214,805	2,368,744	2,120,680	2,105,848	2,368,439	2,722,423
Supplemental Educational Opportunity Grant	847,104	761,730	668,054	744,070	901,751	956,056	712,213
Subtotal, College Based Aid	\$4,250,687	\$4,552,244	\$4,733,684	\$4,040,357	\$4,124,755	\$4,511,968	\$4,542,193
Pell Grants	4,152,996	4,093,823	4,438,016	4,410,102	5,275,414	5,281,232	6,143,331
Health Professional Loans	740,887	920,111	538,737	586,442	656,834	554,472	387,013
Guaranteed Student Loans	0	0	0	0	0	0	0
Institutional Funds**	13,678,531	13,594,096	14,786,990	18,930,550	21,896,206	24,596,467	27,871,153
State Funds***	980,154	788,663	698,693	638,843	601,457	890,851	1,051,745
Private Funds	1,139,942	1,279,428	2,000,844	3,948,968	2,043,039	1,652,630	2,082,510
Other Government Grants	206,242	164,097	226,939	253,943	229,233	101,042	238,408
Federal Direct Loans	30,820,230	37,148,636	39,175,956	41,467,384	47,887,888	46,647,839	45,800,384
Total Funds	\$55,969,669	\$62,541,098	\$66,599,859	\$74,276,589	\$82,714,826	\$84,236,501	\$88,116,737
Percent Change from Previous Year	+18%	+12%	+6%	+12%	+11%	+2%	+5%
Unduplicated Number of Recipients	7,118	8,229	8,396	8,489	8,715	8,624	8,900
Percent Change from Previous Year	+18%	+16%	+2%	+1%	+3%	-1%	3%
Unduplicated Number of Applicants	14,071	14,015	13,998	15,084	15,071	15,166	15,517
Percent Change from Previous Year	+12%	0%	0%	+8%	0%	+1%	+2%

51

Note: Data is for federal years, July through June.

*Data from 1994-95 through 1997-98 include UAB Walker College.

**Includes institutional employment.

***Includes scholarships awarded to UAB students in Dentistry, Medicine, and Optometry.

Sources: Office of Financial Aid, Office of Human Resource Management Information Systems

UAB ATHLETICS

The University of Alabama at Birmingham initiated an intercollegiate varsity athletic program in 1978. The athletic program has subsequently expanded to include 17 men's and women's sports. UAB participates as a Division I member of the NCAA. Through the 1990-91 season, UAB was a member of the Sun Belt Conference. In 1991, UAB became a charter member of the Great Midwest Conference. In 1995, UAB joined the newly created Conference USA.

Athletic Director Herman R. Frazier

Men's Programs

Baseball
Basketball
Football
Golf
Soccer
Tennis

Head Coach

Larry Giangrosso
Murry Bartow
Watson Brown
Alan Kaufman
Mike Getman
Derek Tarr

Women's Programs

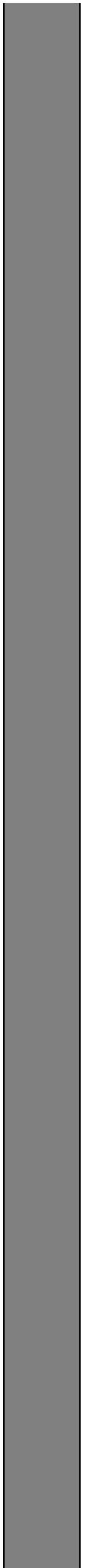
Basketball
Cross-Country, Track
Golf
Rifle
Soccer
Softball
Synchronized Swimming
Tennis
Volleyball

Head Coach

Jeannie Milling
Brian Funk
Gwen Merritt
Lori Goodwin
Paul Harbin
Marla Townsend
Amy O'Donnell
Mert Ertunga
Melinda Claiborne

Source: UAB Sports Information

Faculty and Staff



UAB WORK FORCE FY 2001-02

Organizational Area	Full-time		Part-time		Total		Grand Total
	Men	Women	Men	Women	Men	Women	
Central Administration	831	728	209	473	1,040	1,201	2,241
Hospital	1,372	3,712	157	824	1,529	4,536	6,065
Provost/Academics	2,121	3,295	1,166	1,563	3,287	4,858	8,145
TOTAL	4,324	7,735	1,532	2,860	5,856	10,595	16,451

Job Category	Full-time		Part-time		Total		Grand Total
	Men	Women	Men	Women	Men	Women	
Executive/Administrative	132	121	2	2	134	123	257
Faculty*	1,277	562	89	60	1,366	622	1,988
Professional Nonfaculty	1,541	3,399	636	1,145	2,177	4,544	6,721
Secretarial/Clerical	152	1,723	654	1,338	806	3,061	3,867
Technical/Paraprofessional	546	922	84	170	630	1,092	1,722
Service Maintenance	370	998	67	145	437	1,143	1,580
Skilled Crafts	306	10	0	0	306	10	316
TOTAL	4,324	7,735	1,532	2,860	5,856	10,595	16,451

Job Category	American					Total
	Indian	Asian	Black	Hispanic	White	
Executive/Administrative	1	1	19	1	235	257
Faculty*	6	213	94	57	1,618	1,988
Professional Nonfaculty	15	702	1,136	79	4,789	6,721
Secretarial/Clerical	4	136	2,139	20	1,568	3,867
Technical/Paraprofessional	3	48	677	12	982	1,722
Service Maintenance	1	5	1,352	4	218	1,580
Skilled Crafts	2	1	109	1	203	316
TOTAL	32	1,106	5,526	174	9,613	16,451

*Employees who also have faculty appointments are included in their primary occupational classification.

Source: Office of Human Resource Management Information Systems, data as of October, 2001

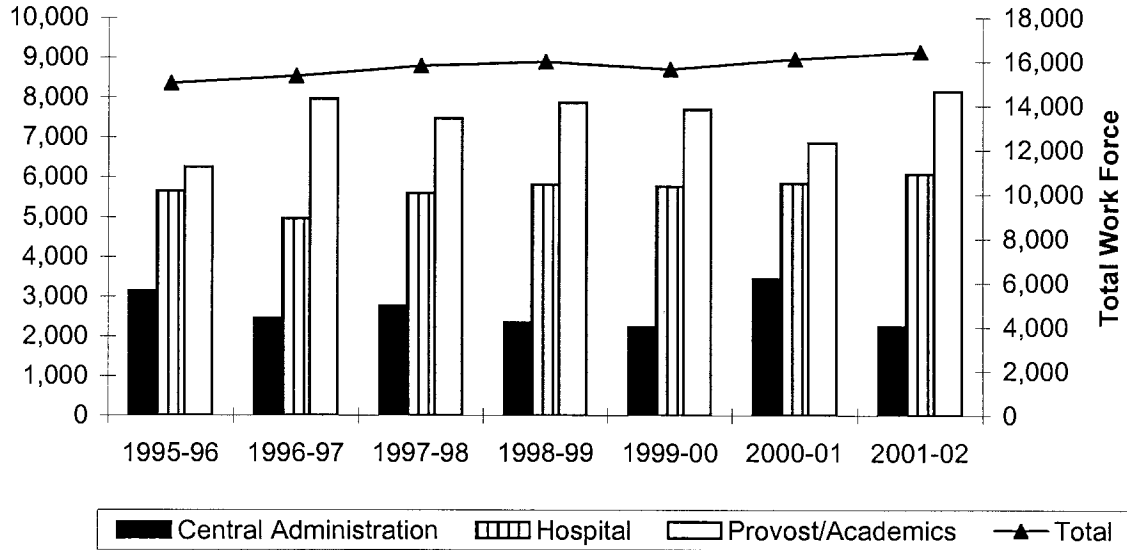
**UAB WORK FORCE BY AREA, STATUS, GENDER, AND JOB CATEGORY
1994-95 through 2001-02**

	<u>1994-95</u>	<u>1995-96</u>	<u>1996-97</u>	<u>1997-98</u>	<u>1998-99</u>	<u>1999-00</u>	<u>2000-01</u>	<u>2001-02</u>
By Area								
Central Administration	3,165	3,144	2,456	2,766	2,351	2,225	3,443	2,241
Hospital	5,689	5,647	4,955	5,595	5,806	5,758	5,833	6,065
Provost/Academics*	6,438	6,249	7,954	7,468	7,861	7,692	6,851	8,145
Unknown	2	4	5	4	4	-	-	-
Total	15,294	15,044	15,370	15,833	16,022	15,675	16,127	16,451
By Status								
Full-time	10,378	10,224	10,171	10,220	10,112	11,012	11,120	12,059
Part-time	4,916	4,820	5,199	5,613	5,910	4,663	5,007	4,392
Total	15,294	15,044	15,370	15,833	16,022	15,675	16,127	16,451
By Gender								
Men	5,498	5,379	5,497	5,649	5,707	5,575	5,737	5,856
Women	9,796	9,665	9,873	10,184	10,315	10,100	10,390	10,595
Total	15,294	15,044	15,370	15,833	16,022	15,675	16,127	16,451
By Job Category								
Executive/Administrative	265	272	257	240	240	258	260	257
Faculty	1,863	1,849	1,773	1,745	1,810	1,895	1,934	1,988
Professional Nonfaculty	5,381	5,444	5,652	5,953	6,480	6,271	6,512	6,721
Secretarial/Clerical	3,833	3,621	4,109	4,299	3,878	3,718	3,838	3,867
Technical/Paraprofessional	1,880	1,795	1,683	1,735	1,764	1,674	1,682	1,722
Service Maintenance	1,743	1,728	1,583	1,554	1,544	1,550	1,595	1,580
Skilled Crafts	329	335	313	307	306	309	306	316
Total	15,294	15,044	15,370	15,833	16,022	15,675	16,127	16,451

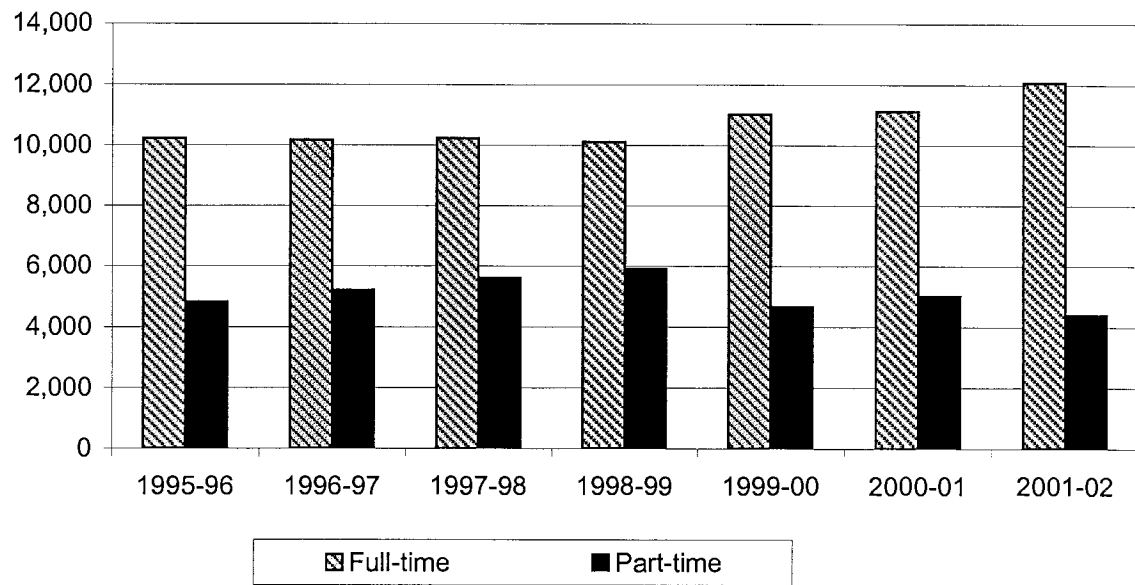
*Prior to 1996-97, this was shown as Academic Affairs and Health Affairs, separately.

Source: Office of Human Resource Management Information Systems, data as of October of each year

UAB WORK FORCE BY AREA 1995-96 to 2001-02



UAB WORK FORCE BY STATUS 1995-96 to 2001-02



**UAB FULL-TIME WORK FORCE AND PAYROLL
1992-2001**

FULL-TIME WORK FORCE

<u>Year</u>	<u>Full-time Nonfaculty</u>	<u>Full-time Faculty</u>	<u>Total Full-time Work Force</u>	<u>Change from Previous Year</u>
1992	8,545	1,683	10,228	3.6%
1993	8,654	1,695	10,349	1.2%
1994	8,659	1,719	10,378	0.3%
1995	8,499	1,725	10,224	-1.5%
1996	8,518	1,653	10,171	-0.5%
1997	8,595	1,625	10,220	0.5%
1998	8,469	1,643	10,112	-1.1%
1999	9,324	1,688	11,012	8.9%
2000	9,393	1,727	11,120	1.0%
2001	10,220	1,839	12,059	8.4%

Source: Office of HR Management Information Systems, Compliance Statistics as of Fall each year

PAYROLL

<u>Year</u>	<u>Payroll</u>	<u>Change from Previous Year</u>		
		<u>Amount</u>	<u>Percent</u>	
1992	380,510,960	30,975,796	8.9%	(H)
1993	400,483,323	19,972,363	5.2%	
1994	411,398,135	10,914,812	2.7%	(L)
1995	425,177,618	13,779,483	3.3%	
1996	437,611,483	12,433,865	2.9%	
1997	466,822,683	29,211,200	6.7%	
1998	503,859,895	37,037,212	7.9%	
1999	529,747,149	25,887,254	5.1%	
2000	559,429,640	29,682,491	5.6%	
2001	590,018,287	30,588,647	5.5%	

(H) Ten-year High

(L) Ten-year Low

Source: UAB Payroll Department Calendar Year Total (does not include UAB Walker College or fringe benefits)

**UAB FULL-TIME FACULTY* BY RANK, GENDER, AND TENURE STATUS
FALL 2001**

School/Unit	MEN		WOMEN		TOTAL	
	Number	Tenured	Number	Tenured	Number	Tenured
ARTS AND HUMANITIES						
Professor	19	19	7	7	26	26
Associate	25	20	16	15	41	35
Assistant	9	1	10	0	19	1
Instructor	10	0	8	0	18	0
Other	1	0	1	0	2	0
TOTAL	64	40	42	22	106	62
BUSINESS						
Professor	17	17	2	2	19	19
Associate	13	13	4	4	17	17
Assistant	8	0	5	0	13	0
Instructor	0	0	0	0	0	0
Other	0	0	1	0	1	0
TOTAL	38	30	12	6	50	36
DENTISTRY						
Professor	19	19	3	3	22	22
Associate	13	5	5	1	18	6
Assistant	11	1	4	0	15	1
Instructor	5	0	2	0	7	0
Other	2	0	1	0	3	0
TOTAL	50	25	15	4	65	29
EDUCATION						
Professor	7	7	6	5	13	12
Associate	13	8	7	5	20	13
Assistant	5	0	13	0	18	0
Instructor	0	0	5	0	5	0
Other	0	0	0	0	0	0
TOTAL	25	15	31	10	56	25
ENGINEERING						
Professor	11	9	2	2	13	11
Associate	17	12	1	1	18	13
Assistant	17	0	2	0	19	0
Instructor	1	0	0	0	1	0
Other	0	0	1	0	1	0
TOTAL	46	21	6	3	52	24

*Figures include employees with full-time regular faculty appointments.

UAB FULL-TIME FACULTY* BY RANK, GENDER, AND TENURE STATUS (CONTINUED)

School/Unit	MEN		WOMEN		TOTAL	
	Number	Tenured	Number	Tenured	Number	Tenured
HEALTH RELATED PROFESSIONS						
Professor	18	16	4	4	22	20
Associate	14	8	22	17	36	25
Assistant	11	0	19	0	30	0
Instructor	2	0	4	0	6	0
Other	0	0	1	0	1	0
TOTAL	45	24	50	21	95	45
JOINT HEALTH SCIENCES						
Professor	72	70	9	7	81	77
Associate	30	21	14	7	44	28
Assistant	53	0	26	0	79	0
Instructor	12	0	5	0	17	0
Other	0	0	0	0	0	0
TOTAL	167	91	54	14	221	105
MEDICINE						
Professor	203	183	34	29	237	212
Associate	134	59	44	21	178	80
Assistant	224	0	111	0	335	0
Instructor	25	0	16	0	41	0
Other	7	0	3	0	10	0
TOTAL	593	242	208	50	801	292
NATURAL SCIENCES AND MATHEMATICS						
Professor	33	33	2	2	35	35
Associate	26	24	2	2	28	26
Assistant	11	0	4	1	15	1
Instructor	2	0	4	1	6	1
Other	1	0	0	0	1	0
TOTAL	73	57	12	6	85	63
NURSING						
Professor	2	2	12	12	14	14
Associate	0	0	12	6	12	6
Assistant	0	0	22	11	22	11
Instructor	0	0	2	0	2	0
Other	0	0	0	0	0	0
TOTAL	2	2	48	29	50	31
OPTOMETRY						
Professor	17	17	1	0	18	17
Associate	12	8	2	1	14	9
Assistant	9	0	8	0	17	0
Instructor	0	0	0	0	0	0
Other	0	0	0	0	0	0
TOTAL	38	25	11	1	49	26

*Figures include employees with full-time regular faculty appointments.

UAB FULL-TIME FACULTY* BY RANK, GENDER, AND TENURE STATUS (CONTINUED)

School/Unit	MEN		WOMEN		TOTAL	
	Number	Tenured	Number	Tenured	Number	Tenured
PUBLIC HEALTH						
Professor	19	18	4	4	23	22
Associate	11	7	12	9	23	16
Assistant	12	0	11	0	23	0
Instructor	1	0	0	0	1	0
Other	0	0	1	0	1	0
TOTAL	43	25	28	13	71	38
SOCIAL AND BEHAVIORAL SCIENCES						
Professor	25	24	4	4	29	28
Associate	21	20	7	7	28	27
Assistant	14	0	11	0	25	0
Instructor	0	0	0	0	0	0
Other	0	0	0	0	0	0
TOTAL	60	44	22	11	82	55
LISTER HILL LIBRARY OF THE HEALTH SCIENCES						
Professor	1	1	1	1	2	2
Associate	2	0	3	1	5	1
Assistant	2	0	4	0	6	0
Instructor	1	0	2	0	3	0
Other	0	0	0	0	0	0
TOTAL	6	1	10	2	16	3
MERVYN H. STERNE LIBRARY						
Professor	0	0	0	0	0	0
Associate	0	0	0	0	0	0
Assistant	0	0	0	0	0	0
Instructor	0	0	0	0	0	0
Other	6	0	10	1	16	1
TOTAL	6	0	10	1	16	1
UAB TOTAL						
Professor	463	435	91	82	554	517
Associate	331	205	151	97	482	302
Assistant	386	2	250	12	636	14
Instructor	59	0	48	1	107	1
Other	17	0	19	1	36	1
	1,256	642	559	193	1,815	835

*Figures include employees with full-time regular faculty appointments.

Source: UAB Office of Human Resource Management Information Systems, as of October 2001

**HIGHEST DEGREES OF UAB FULL-TIME FACULTY* BY SCHOOL BY RANK
FALL 2001**

<u>School/Unit</u>	<u>Academic Doctorate</u>	<u>Professional Doctorate</u>	<u>Master's</u>	<u>Bachelor's/ Other</u>	<u>Total</u>
ARTS AND HUMANITIES					
Professor	18	0	8	0	26
Associate	31	4	6	0	41
Assistant	10	4	5	0	19
Instructor	4	1	10	3	18
Other	1	0	1	0	2
TOTAL	64	9	30	3	106
BUSINESS					
Professor	17	2	0	0	19
Associate	12	2	3	0	17
Assistant	12	0	1	0	13
Instructor	0	0	0	0	0
Other	0	0	1	0	1
TOTAL	41	4	5	0	50
DENTISTRY					
Professor	3	19	0	0	22
Associate	1	16	0	1	18
Assistant	0	15	0	0	15
Instructor	0	6	1	0	7
Other	0	0	0	3	3
TOTAL	4	56	1	4	65
EDUCATION					
Professor	6	7	0	0	13
Associate	13	7	0	0	20
Assistant	14	4	0	0	18
Instructor	1	0	3	1	5
Other	0	0	0	0	0
TOTAL	34	18	3	1	56
ENGINEERING					
Professor	13	0	0	0	13
Associate	16	0	2	0	18
Assistant	19	0	0	0	19
Instructor	0	0	0	1	1
Other	1	0	0	0	1
TOTAL	49	0	2	1	52

*Figures include employees with full-time regular faculty appointments.

HIGHEST DEGREES OF UAB FULL-TIME FACULTY* (CONTINUED)

<u>School/Unit</u>	<u>Academic Doctorate</u>	<u>Professional Doctorate</u>	<u>Master's</u>	<u>Bachelor's/ Other</u>	<u>Total</u>
HEALTH RELATED PROFESSIONS					
Professor	12	7	3	0	22
Associate	13	2	21	0	36
Assistant	14	2	12	2	30
Instructor	0	0	3	3	6
Other	0	0	0	1	1
TOTAL	39	11	39	6	95
JOINT HEALTH SCIENCES					
Professor	62	19	0	0	81
Associate	30	14	0	0	44
Assistant	57	20	1	1	79
Instructor	14	3	0	0	17
Other	0	0	0	0	0
TOTAL	163	56	1	1	221
MEDICINE					
Professor	46	190	1	0	237
Associate	34	141	3	0	178
Assistant	82	236	13	4	335
Instructor	15	17	7	2	41
Other	0	4	2	4	10
TOTAL	177	588	26	10	801
NATURAL SCIENCES AND MATHEMATICS					
Professor	35	0	0	0	35
Associate	28	0	0	0	28
Assistant	15	0	0	0	15
Instructor	3	0	3	0	6
Other	0	0	1	0	1
TOTAL	81	0	4	0	85
NURSING					
Professor	9	5	0	0	14
Associate	7	5	0	0	12
Assistant	13	6	3	0	22
Instructor	0	0	2	0	2
Other	0	0	0	0	0
TOTAL	29	16	5	0	50
OPTOMETRY					
Professor	10	8	0	0	18
Associate	6	7	0	1	14
Assistant	8	8	1	0	17
Instructor	0	0	0	0	0
Other	0	0	0	0	0
TOTAL	24	23	1	1	49

*Figures include employees with full-time regular faculty appointments.

HIGHEST DEGREES OF UAB FULL-TIME FACULTY* (CONTINUED)

<u>School/Unit</u>	<u>Academic Doctorate</u>	<u>Professional Doctorate</u>	<u>Master's</u>	<u>Bachelor's/ Other</u>	<u>Total</u>
PUBLIC HEALTH					
Professor	12	10	1	0	23
Associate	16	6	1	0	23
Assistant	20	1	1	1	23
Instructor	1	0	0	0	1
Other	0	0	0	1	1
TOTAL	49	17	3	2	71
SOCIAL AND BEHAVIORAL SCIENCES					
Professor	29	0	0	0	29
Associate	28	0	0	0	28
Assistant	21	0	4	0	25
Instructor	0	0	0	0	0
Other	0	0	0	0	0
TOTAL	78	0	4	0	82
LISTER HILL LIBRARY OF THE HEALTH SCIENCES					
Professor	0	0	2	0	2
Associate	0	0	5	0	5
Assistant	1	0	4	1	6
Instructor	0	0	3	0	3
Other	0	0	0	0	0
TOTAL	1	0	14	1	16
MERVYN H. STERNE LIBRARY					
Professor	0	0	0	0	0
Associate	0	0	0	0	0
Assistant	0	0	0	0	0
Instructor	0	0	0	0	0
Other	1	1	13	1	16
TOTAL	1	1	13	1	16
UAB TOTAL					
Professor	272	267	15	0	554
Associate	235	204	41	2	482
Assistant	286	296	45	9	636
Instructor	38	27	32	10	107
Other	3	5	18	10	36
TOTAL	834	799	151	31	1,815

*Figures include employees with full-time regular faculty appointments.

Source: UAB Office of Human Resource Management Information Systems, as of October 2001

ENDOWED POSITIONS AT UAB

- Charles A. Alford, M.D. Endowed Chair in Pediatric Infectious Diseases (2001)
William J. Britt, M.D. (2002-present)
- Thomas E. Andreoli Professorship in Nephrology (2001)
- J. Max Austin, Jr., M.D. Endowed Professorship in Gynecologic Oncology (2000)
- Baker-Dean Endowed Professorship in Interventional Cardiology (2000)
- George W. Barber, Jr. Foundation Professorship in Otolaryngology/Head and Neck Surgery (1993)
- Lionel M. Barger, Jr., M.D. Chair in Pediatric Cardiology (1996)
Edward V. Colvin, M.D. (1997-present)
- John H. Blue Chair of General Surgery (2001)
Selwyn M. Vickers, M.D. (2001-present)
- Mary J. Bradford Endowed Professorship in Gastroenterology (1998)
Phillip D. Smith, M.D., F.A.C.P. (2001-present)
- Ben Vaughan Branscomb Chair of Medicine in Respiratory Disease (1990)
Jack Durand Fulmer, M.D. (1990-1996)
Keith Randall Young, Jr., M.D. (1996-present)
- Wallace R. Bunn Chair in Telecommunications (1992)
Gary J. Grimes, Ph.D. (1993-present)
- C. E. Butterworth, Jr., M.D. Professorship in the Department of Nutrition Sciences (1996)
Roland L. Weinsier, M.D., Dr.P.H. (1996-present)
- Benjamin Monroe Carraway, M.D. Chair in Anesthesiology (1997)
William A. Lell, M.D. (1998-present)
- Neil E. Christopher, M.D. Endowed Professorship in Family and Community Medicine (2001)
- Ellen Gregg Shook Culverhouse Chair in Gynecologic Oncology (1998)
Ronald D. Alvarez, M.D. (1999-present)
- Dental Alumni - Joseph F. Volker Chair of Clinical Dentistry (1982)
Karl F. Leinfelder, D.D.S. (1983-1995)
Noel Karl Childers, D.D.S., M.S., Ph.D. (2001-present)
- William E. Dismukes, M.D., Endowed Professorship (2002)
- Edwin M. Dixon Endowed Chair in Neonatology (2000)
Waldemar A. Carlo, M.D. (2000-present)
- Heman E. Drummond Endowed Chair of Psychiatry (1988)
David L. Garver, M.D. (1989-1992)
Robert O. Friedel, M.D. (1992-2001)
- Eminent Scholar Chair in Pulmonary Diseases (1989)
Dick D. Briggs, Jr., M.D. (1989-1996)
William Charles Bailey, M.D. (1996-present)

ENDOWED POSITIONS AT UAB (CONTINUED)

Endowed Professorship in Family and Community Medicine (2001)

Endowed Professorship in Nephrology Leadership (2001)
David G. Warnock, M.D. (2001-present)

Endowed Professorship in Polar or Marine Biology (2001)
James B. McClintock, Ph.D. (2001-present)

Endowed Professorship in Transplant Nephrology (2001)
John J. Curtis, M.D. (2001-present)

Edward A. Ernst, M.D. Endowed Professorship in Anesthesiology (2001)

EyeSight Foundation of Alabama Endowed Chair of Ophthalmology (1999)
Lanning B. Kline, M.D. (1999-present)

Wayne H. and Sara Crews Finley Chair of Medical Genetics (1986)
Sara Crews Finley, M.D. (1986-1996)

Charles E. Flowers, Jr. Endowed Chair* of Obstetrics and Gynecology (1985)
*converted from Professorship (1985) to Chair (2002)
Bruce A. Harris, M.D. (1986-1988)
Robert L. Goldenberg, M.D. (1988-present)

James Garber Galbraith Chair in Neurosurgery (1992)
Richard B. Morawetz, M.D. (1994-present)

Simon Gelman, M.D., Ph.D. Endowed Professorship in Anesthesiology (2001)

GeroPsychiatry Research Chair (1993)

J. W. and Virginia Goodwin - Warren D. Blackburn, Jr. Research Chair in Rheumatology (1993)
Warren D. Blackburn, Jr., M.D. (1993-1998)
John D. Mountz, M.D., Ph.D. (2002-present)

Jeanne and Ann Griffin Chair for Women's Cancer Research (1997)
David T. Curiel, M.D. (1997-present)

Alfred Habeeb Chair in Anesthesiology (1992)
Simon Gelman, M.D. (1992-1993)
David H. Chestnut, M.D. (1994-present)

Ruth Lawson Hanson Chair of Medicine in Diabetes and Metabolism (1967)
Buris R. Boshell, M.D. (1967-1989)
Jeffrey E. Kudlow, M.D. (1990-present)

Joy and Bill Harbert Endowed Chair in Cancer Genetics (2001)

Bruce Harris, Jr., M.D. Endowed Professorship in the Department of Obstetrics and Gynecology (1999)
William W. Andrews, Ph.D., M.D. (2000-present)

James Johnston Hicks Chair of Otolaryngology/Head and Neck Surgery (1989)
Julius N. Hicks, M.D. (1991-2002)
Michael J. Sillers, M.D. (2002-present)

S. Richardson Hill, Jr. Professorship in Endocrinology (1988)

ENDOWED POSITIONS AT UAB (CONTINUED)

Basil I. Hirschowitz Endowed Chair in Gastroenterology (1996)*

*converted from Professorship (1988) to Chair (1996)

Charles O. Elson, M.D. (1997-present)

Charles and Alice Hohenberg Professorship in Pulmonary and Critical Care Medicine (1996)

Howard L. Holley Research Chair in Rheumatology (1987)

William J. Koopman, M.D. (1988-1995)

Robert P. Kimberly, M.D. (1996-present)

Charles Byron Ireland Chair of Psychiatric Research (1973)

John R. Smythies, M.D. (1973-1989)

Hyman B. Niznik, Ph.D. (1998)

Katharine Reynolds Ireland Chair of Pediatrics (1992)

Sergio B. Stagno, M.D. (1993-present)

Kathy Ireland Chair in Psychiatric Research (1992)

Lewis R. Baxter, Jr., M.D. (1995-present)

John S. Jemison, Jr. Visiting Professorship in the Humanities (1986)

L. R. Jordan Chair in Health Services Administration (1988)

John E. Sheridan, Ph.D. (1990-present)

Fay Fletcher Kerner Chair of Surgery (1964)

Champ Lyons, M.D. (1964-1965)

John W. Kirklin, M.D. (1966-1988)

Arnold G. Diethelm, M.D. (1988-2001)

Kirby I. Bland, M.D. (2001-present)

John W. Kirklin Chair of Cardiovascular Surgery (1980)

Nicholas T. Kouchoukos, M.D. (1981-1983)

Albert D. Pacifico, M.D. (1983-present)

Robert B. Kyle Professorship and Chair in Rehabilitation Medicine (1974)

Samuel L. Stover, M.D. (1984-1995)

Amie B. Jackson, M.D. (1996-present)

James C. and Elizabeth T. Lee Chair in Biochemistry (1993)

Gerald W. Hart, Ph.D. (1993-1997)

Tim M. Townes, Ph.D. (2001-present)

Patrick H. Linton Professorship of Psychiatry (1987)

Patrick H. Linton, M.D. (1987-1989)

Jacqueline M. Feldman, M.D. (1999-present)

Loeb Eminent Scholar Chair in Pediatrics (1992)

Richard J. Whitley, M.D. (1992-present)

Jane Knight Lowe Chair of Medicine in Rheumatology (2001)*

*converted from Professorship (1986) to Chair (2001)

Eugene V. Ball, M.D. (1986-1996)

Graciela S. Alarcon, M.D., M.P.H. (1997-present)

ENDOWED POSITIONS AT UAB (CONTINUED)

- Dr. Champ Lyons Endowed Chair in General Surgery (1997)
Marshall M. Urist, M.D. (1997-present)
- Jeanne V. Marks Endowed Chair in Cardiovascular Research (1999)
Raymond E. Ideker, M.D., Ph.D. (1999-present)
- Martha Ann and David L. May Endowed Chair in Cancer Research (1999)
John J. Rinehart, M.D. (2000-present)
- Charles A. McCallum Chair of Oral and Maxillofacial Surgery (1985)
Victor J. Matukas, D.D.S., Ph.D., M.D. (1985-1997)
Peter D. Waite, M.P.H., D.D.S., M.D. (2001-present)
- Charles H. McCauley Chair of Microbiology (1978)
Roy Curtiss, III, Ph.D. (1978-1983)
David D. Chaplin, M.D., Ph.D. (2001-present)
- Alice McNeal, M.D. Endowed Chair in Anesthesiology (1998)
Sadis Matalon, Ph.D. (1999-present)
- Gwen McWhorter Endowed Chair in Geriatric Medicine (2002)
- Nathan E. Miles Endowed Chair of Ophthalmology (1996)
Harold W. Skalka, M.D. (1996-present)
- School of Nursing Endowed Chair (1997)
- John S. Odess Chair in Otolaryngology/Head and Neck Surgery (1993)
Glenn E. Peters, M.D. (1993-present)
- Marie L. O'Koren Endowed Chair in Nursing (1992)
Barbara A. Smith, Ph.D., R.N. (1997-present)
- A. D. Pacifico, M.D. Endowed Chair of Cardiovascular Surgery (2002)
David C. McGiffin, M.D. (2002-present)
- Emmett G. and Beverly S. Parrish Endowed Professorship (2001)
- Department of Radiology Visiting Professor Endowment Fund (1989)
- Leonard H. Robinson Endowed Chair in Pathology (1998)
- James R. Rosen Chair in Dental Research (1990)
Marjorie K. Jeffcoat, D.M.D. (1991-present)
- Merle M. Salter Endowed Chair of Radiation Oncology (1995)
James A. Bonner, M.D. (1998-present)
- John D. Sherrill Chair of Orthopedic Surgery (1970)
Kurt Max Walter Niemann, M.D. (1971-1993)
John M. Cuckler, M.D. (1994-present)
- Elesabeth Ridgely Shook Endowed Chair in Psychiatry (2001)
- J. Marion Sims Endowed Chair in Obstetrics and Gynecology (1985)
Hugh M. Shingleton, M.D. (1985-1994)
John C. Hauth, M.D. (1999-present)

ENDOWED POSITIONS AT UAB (CONTINUED)

Margaret Cameron Spain Chair in Obstetrics and Gynecology (1998)
Edward E. Partridge, M.D. (1999-present)

Spencer Chair in Medical Science Leadership (1992)
J. Claude Bennett, M.D. (1992-1994)
William J. Koopman, M.D. (1995-present)

Evalina B. Spencer Chair in Oncology (1994)
Albert F. LoBuglio, M.D. (1994-present)

Tate Jordan Thomas Professorship in Psychiatric Medicine (1994)
Jack Gary Modell, M.D. (1998-present)

Transplant Nephrology Clinical Research Professorship (2001)

UAB Alumni and Friends Professorship in Accounting (1990)
Frank R. Rayburn, Ph.D. (1990-1998)
Thomas P. Edmonds, Ph.D. (1998-present)

UAB Cardiovascular Surgical Research Professorship (1980)
Eugene H. Blackstone, M.D. (1980-1997)
James Karl Kirklin, M.D. (1997-present)

Anna Lois Waters Chair of Medicine in Rheumatology (1970)
Howard L. Holley, M.D. (1970-1985)
William J. Koopman, M.D. (1985-1988)
John E. Volanakis, M.D. (1989-1997)
Larry W. Moreland, M.D. (2001-present)

Mary Gertrude Waters Chair of Cardiovascular Medicine (1972)
Thomas N. James, M.D. (1976-1987)
Gerald M. Pohost, M.D. (1991-2001)

Newman H. Waters Chair of Clinical Pharmacology (1992)
Robert B. Diasio, M.D. (1993-present)

Webb Chair in Nutrition Sciences (2001)

Ben S. Weil Chair of Industrial Distribution (1986)
Jay A. Smith, Jr., D.B.A. (1991-present)

Witten-Stanley Endowed Chair in Radiology (1997)

J. Benjamin Younger, M.D. Endowed Professorship in Reproductive Endocrinology and Infertility (2000)

Note: Date in parentheses is the year established.

Source: Minutes, the Board of Trustees of the University of Alabama; campus records

UAB FACULTY AWARDS AND HONORS

SPECIAL PROFESSORSHIPS AND APPOINTMENTS

Distinguished Professors

Samuel B. Barker, Ph.D. (1976-2002)
J. Claude Bennett, M.D. (1996-emeritus, 1996)
Ben Vaughan Branscomb, M.D. (1989-emeritus, 1989)
Harriet P. Dustan, M.D. (1985-emerita, 1988)
Charles E. Flowers, Jr., M.D. (1985-emeritus, 1985)
Walter B. Frommeyer, M.D. (1968-1979)
Tinsley R. Harrison, M.D. (1964-1978)
S. Richardson Hill, Jr., M.D. (1987-emeritus, 1994)
Thomas N. James, M.D. (1981-1987)
Champ Lyons, M.D. (1964-1965)
Charles A. McCallum, D.M.D., M.D. (1993-emeritus, 1998)
Jimmy D. Neill, Ph.D. (1994-present)
James A. Pittman, Jr., M.D. (1992-emeritus, 1992)
Joseph F. Volker, D.D.S., Ph.D. (1982-1989)

Distinguished Service Professors

Joseph H. Appleton, Ph.D.; Civil Engineering (1984-emeritus, 1990)
Milly Cowles, Ph.D.; Education (1987-emerita, 1989)
Jay Goldman, D.Sc.; Engineering (2001-present)
Fain A. Guthrie, Ed.D.; Education (1980-emeritus, 1988)
George E. Passey, Ph.D.; Psychology (1985-emeritus, 1985)
J. Dudley Pewitt, D.B.A.; Business (1990-1994)

University Professors

Frederick W. Conner, Ph.D.; Humanities (1976-emeritus, 1978)
Dalton E. McFarland, Ph.D.; Management (1972-emeritus, 1983)
James Rachels, Ph.D.; Philosophy (1983-present)
Craig T. Ramey, Ph.D.; Psychology (1997-present)
Henry Panion, Ph.D.; Music (2000-present)
Edward Taub, Ph.D.; Psychology (2000-present)

University Scholars

William F. Bridgers, M.D.; Public Health (1991-1992)
W. Jack Duncan, Ph.D.; Management (1987-present)
Virginia V. Hamilton, Ph.D.; History (1981-emerita, 1987)
David E. Harrell, Ph.D.; History (1976-1981; 1985-1990)
David L. Sparks, Ph.D.; Psychology (1976-1981)
James F. Tent, Ph.D.; History (1990-present)
Yogesh K. Vohra, Ph.D.; Physics (2001-present)
Jimmy W. Mays, Ph.D.; Chemistry (2001)

UAB FACULTY AWARDS AND HONORS (CONTINUED)

NATIONAL RECOGNITIONS

Fulbright Scholars

- 1965-67 Abdullah A. Khatri - Psychology
- 1977-78 Blaine A. Brownell - American and Urban Studies
Henry N. McCarl - Economics
- 1981-82 Ruth B. LaMonte - Education
J. Walter Mason - Environmental Health
- 1982-83 Daniel R. Lesnick - History
Eul Soo Pang - History
- 1983-84 Thomas L. St. Pierre - Chemistry
- 1985-86 Kathleen S. Logan - Anthropology
James F. Mersmann - English
Bruce P. Wheatley - Anthropology
- 1986-87 W. Jack Duncan - Management
John D. Jones - Student Affairs
Charles W. Nance - Anthropology
Larry G. Wharton - English
- 1987-88 Ralph A. Johnson - Center for Labor Education and Research
Mohammed A. Khaled - Nutrition Sciences
- 1989-90 Thomas L. Powers - Marketing
Frederick P. Smith - Criminal Justice
- 1990-91 Richard M. Gargiulo - Special Education
- 1991-92 Jane M. Christian - Anthropology
Stephen O. Glosecki - English
- 1992-93 Bruce Freeman - Anesthesiology
- 1993-94 Beverly Hawk - Political Science
Virginia D. Gauld - Student Affairs
- 1994-95 Roger T. Lewis - Mathematics
- 1995-96 Voytek Zubek - Political Science
- 1995-97 Mary Umlauf - Nursing
- 1996-97 Tee Hiett - Health Services Administration
- 1997-98 Robert A. McLean - Health Administration
- 1999-00 Paul Pedersen – Education
- 2002-03 Jack E. Davis - History

National Academy of Sciences

- 1988 Max D. Cooper, M.D. – Pediatrics

UAB FACULTY AWARDS AND HONORS (CONTINUED)

DISTINGUISHED FACULTY LECTURERS

1964	Dr. Tinsley R. Harrison, Professor of Medicine
1965	Dr. Champ Lyons, Professor and Chairman, Department of Medicine
1966	Dr. Joseph F. Volker, Vice President for Health Affairs
1967	Dr. Thomas E. Hunt, Professor of Anatomy
1968	Dr. Samuel B. Barker, Director of Graduate Studies
1969	Dr. Howard L. Holley, Professor of Medicine
1970	Dr. Sidney B. Finn, Professor of Dentistry
1971	Dr. Walter B. Frommeyer, Distinguished Professor, University of Alabama
1972	Dr. Charles A. McCallum, Dean, School of Dentistry
1973	Dr. J. Garber Galbraith, Professor of Surgery
1974	Dr. Elizabeth C. Crosby, Professor Emerita of Anatomy
1975	Dr. John W. Kirklin, Fay Fletcher Kerner Professor and Chairman, Department of Surgery
1976	Dr. S. Richardson Hill, Jr., Vice President for Health Affairs
1977	Dr. Thomas N. James, Mary Gertrude Waters Professor of Cardiology and Chairman, Department of Medicine
1978	Dr. Marie L. O'Koren, Dean, School of Nursing
1979	Dr. J. Claude Bennett, Professor and Chairman, Department of Microbiology
1980	Dr. John R. Durant, Director, Comprehensive Cancer Center
1981	Dr. James A. Pittman, Jr., Dean, School of Medicine
1982	Dr. Max D. Cooper, Professor of Pediatrics
1983	Drs. Wayne and Sara Finley, Director and Co-Director, Laboratory of Medical Genetics
1984	Dr. Harriet P. Dustan, Director, Cardiovascular Research and Training Center
1985	Dr. Leonard H. Robinson, Dean, School of Dentistry
1986	Dr. C. E. Butterworth, Professor and Chairman, Department of Nutrition Sciences
1987	Dr. Dan W. Urry, Director, Laboratory of Molecular Biophysics
1988	Dr. Basil I. Hirschowitz, Professor of Medicine
1989	Dr. Harold M. Fullmer, Professor Emeritus of Pathology
1990	Dr. Juan M. Navia, Dean, School of Public Health
1991	Dr. Lionel M. Barger, Jr., Professor Emeritus of Pediatric Cardiology
1992	Dr. Jiri F. Mestecky, Professor of Microbiology
1993	Dr. Charles E. Bugg, Director, Center for Macromolecular Crystallography
1994	Dr. Arnold G. Diethelm, Fay Fletcher Kerner Professor and Chair, Department of Surgery
1995	Dr. Albert F. LoBuglio, Director, UAB Cancer Center
1996	Dr. Gail H. Cassell, Professor and Chair, Department of Microbiology
1997	Dr. Suzanne Oparil, Professor of Medicine
1998	Dr. Richard J. Whitley, Professor of Pediatrics, Microbiology, and Medicine
1999	Dr. Albert D. Pacifico, John W. Kirklin Professor of Cardiovascular Surgery
2000	Dr. Larry J. DeLucas, Director, UAB Center for Biophysical Sciences and Engineering
2001	Dr. Robert L. Goldenberg, Charles E. Flowers Professor of Obstetrics and Gynecology

Academic or administrative appointment shown for each lecturer is the primary appointment held at the time of selection as Distinguished Faculty Lecturer.

Source: UAB Public Relations and Marketing

UAB FACULTY AWARDS AND HONORS (CONTINUED)

ELLEN GREGG INGALLS / NATIONAL ALUMNI SOCIETY AWARD FOR EXCELLENCE IN CLASSROOM TEACHING AT UAB

1969-70	Dr. Hubert H. Harper, Associate Professor of English and Classical Languages
1970-71	Ms. Charlotte Gafford, Instructor in English
1971-72	Dr. Hubert H. Harper, Associate Professor of English and Classical Languages
1972-73	Mr. James Dupuy, Instructor in Mathematics
1973-74	Dr. Robert L. Penny, Assistant Professor of English
1974-75	Dr. Glenda Elliott, Assistant Professor of Education
1975-76	Dr. John S. Coley, Professor of English
1976-77	Dr. Roberta A. Long, Associate Professor of Education
1977-78	Dr. Maryann M. Manning, Associate Professor of Education
1978-79	Dr. Gary L. Manning, Associate Professor of Education
1979-80	Dr. Carl E. McFarland, Assistant Professor of Psychology
1980-81	Mr. James H. Hawk, Lecturer in Physics
1981-82	Dr. Loudell Ellis-Robinson, Professor of Accounting
1982-83	Ms. Lillian Naumann, Instructor in Biology
1983-84	Dr. David A. Conner, Professor and Chair of Electrical Engineering
1984-85	Dr. Lee R. Summerlin, II, Professor of Chemistry
1985-86	Dr. James F. Mersmann, Associate Professor of English
1986-87	Mr. Ollie S. Powers, III, Assistant Professor of Accounting
1987-88	Dr. Ada W. Long, Associate Professor of English
1988-89	Dr. J. Barry Andrews, Professor of Materials Science and Engineering
1989-90	Dr. Michael R. Bowers, Assistant Professor of Marketing
1990-91	Dr. Stephen O. Glosecki, Associate Professor of English
1991-92	Dr. Thomas P. Edmonds, Professor of Accounting
1992-93	Dr. Fouad H. Fouad, Associate Professor of Civil Engineering
1993-94	Dr. Gregory E. Pence, Professor of Philosophy
1994-95	Ms. Virginia S. Volker, Instructor in Biology
1995-96	Ms. Judy Taylor, Assistant Professor in Nursing
1996-97	Dr. Colin J. Davis, Associate Professor of History
1997-98	Dr. Carl E. McFarland, Jr., Professor and Chair of Psychology
1998-99	Dr. Anne M. Cusic, Instructor in Biology
1999-00	Dr. Jerry T. Aldridge, Professor of Education
2000-01	Dr. Joe K. Gerald, Assistant Professor in Surgical Physician Assistant Program
2001-02	Dr. Maryann M. Manning, Professor of Education

Date shown is the academic year covered by the award. Academic appointment shown for each award winner is the primary appointment held at the time of the award.

Source: UAB Public Relations and Marketing

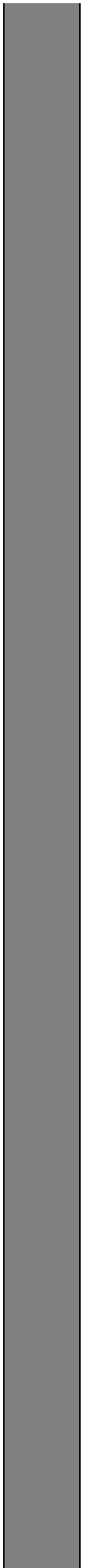
UAB FACULTY AWARDS AND HONORS (CONTINUED)

CAROLYN P. AND CHARLES W. IRELAND PRIZE FOR SCHOLARLY DISTINCTION

1991	Dr. Joan Lorden, Psychology
1992	Dr. James Rachels, Philosophy
1993	Dr. James McClintock, Biology
1994	Dr. James Tent, History
1995	Dr. Roger Lewis, Mathematics
1996	Dr. Henry Panion, Music
1997	Dr. Edward Taub, Psychology
1998	Dr. Harold Kincaid, Philosophy
1999	Dr. Dennis R. Covington, English
2000	Dr. Craig T. Ramey, Civitan International Research Center
2001	Dr. Jimmy W. Mays, Chemistry
2002	Dr. William C. Carter, Foreign Languages and Literatures

Source: Office of the Dean of the Graduate School

Physical and Financial Resources



**UAB BUILDING SUMMARY
FALL 2001**

<u>Building Name</u>	<u>Gross Square Feet</u>	<u>Date Constructed/ Date Acquired*</u>
Administration Building	195,307	1993 *
Administration Building Parking Deck	130,755	1993 *
Alys Robinson Stephens Performing Arts Center	114,745	1996
Arlington Business Center	13,016	1990 (R)
Arts Annex	5,766	1997 *
Bartow Arena	166,740	1988
Bartow Arena Office Towers	18,988	1992
Bessemer Substance Abuse Center	5,700	1996 (R)
Best Western Inn - Medical Center	44,888	1987 * (L)
Bevill Biomedical Sciences Research Building	223,822	1993
Birmingham Regional Emergency Medical Services	4,168	1986 *
Bishop Building	21,072	1961
Blazer Hall (Student Residence)	40,887	1962
Blount Hall (Student Residence)	189,728	2001
Blount Hall Parking Deck	62,706	2001
Boshell Diabetes Education and Research Building	128,545	1973
Burleson Building	9,642	1988 *
Business and Engineering Complex	138,933	1983
Callahan Eye Foundation Hospital	33,291	1988 (R)
Camp Hall (Student Residence)	156,760	1980
Campbell Hall	103,255	1978
Campbell Hall 3rd and 4th Floor Expansion	101,898	1991
Campus Services Facility	6,940	1990 *
Cancer Research Center	38,075	1982
Center Biophysical Sciences and Engineering Addition	19,373	2001
Center for Labor Education and Research	4,776	1975 *
Center for Nuclear Imaging Research	14,481	1986
Center for Psychiatric Medicine	160,956	1992
Center for Psychiatric Medicine Parking	26,786	1992
Center for Research in Women's Health	25,559	2001
Central Laundry Building	31,968	1986
Central Support Building	107,371	1987 *
Central Utility No. 1 and Addition	22,334	1971
Central Utility Plant No. 3	21,710	1991
Chauncey Sparks Center - CIRC	110,500	1969
Chemistry Building	66,540	1972
Chemistry Annex	7,404	1978
Chevron Building	48,170	1989 *
Child Care Center	6,213	1993
Children's Hospital Ambulatory Care Center	21,048	1994 (R)
Children's Hospital Tower	19,600	1992 (R)
Civitan International Research Center	57,044	1992

UAB BUILDING SUMMARY (CONTINUED)

<u>Building Name</u>	<u>Gross Square Feet</u>	<u>Date Constructed/ Date Acquired*</u>
Community Care Building	61,067	1991 *
Community Health Services - 19th	86,244	1981 *
Community Health Services - 20th	66,409	1979 *
Cook Springs Farm (5 Buildings)	17,142	1980 *
Cudworth Continuing Education Center	47,957	1963
Denman Hall (Student Residence)	68,840	1973
Dentistry Building	109,629	1951
Dentistry Building Addition	51,897	1975
Dentistry Building Storage Addition	2,293	1976
Dentistry Clinic	43,264	1951
Dixie Warehouse	4,000	1996 (R)
Dowdy Building	2,593	1971 *
East South Boulevard Building	16,545	1999 (R)
Education Building	111,352	1971
Education Building Parking	32,930	1971
Engel Day Treatment Center	4,895	1970
Engel Day Treatment Center Addition	15,828	1975
Facilities Administration Building	24,591	1995 *
Facilities Administration Annex No. 1	3,166	1995 *
Facilities Administration Annex No. 2	1,790	1995 *
Flammable Storage Building	1,205	1980
Fleet Operations Center	1,302	1989 *
Garden Apartments (20 units)	50,534	1962
General Services Building	52,973	1979
General Services Building 3rd, 4th, and 5th Floor Expansion	77,073	1991
Health Sciences Bookstore	3,528	1993
Henry Peters Building (School of Optometry)	77,950	1975
Henry Peters Building Parking	27,302	1975
Hill University Center	138,810	1983
Hill University Center - Auto Tellers	625	1984
Hixson Hall (Student Residence)	94,845	1962
Hoehn Engineering Building	36,384	1987
Hoehn Engineering Building Addition	3,178	1997
Holcomb Building	1,189	1999 (R)
Holley-Mears Building	10,968	1978 *
Hospital Annex II	6,506	1986 *
Hulsey Center	52,395	1981
Humanities Building	65,443	1972
Huntsville - Ambulatory Care Center	54,122	1975
Huntsville - Clinical Sciences Center	37,850	1978
Jackson Building	3,950	1990 *
Jefferson Tower	301,878	1940
Jefferson Tower - North Wing	118,298	1966
Jefferson Tower - South Wing Addition	22,800	1970

UAB BUILDING SUMMARY (CONTINUED)

<u>Building Name</u>	<u>Gross Square Feet</u>	<u>Date Constructed/ Date Acquired*</u>
Kaul Human Genetics Building	157,742	2001
Kirklin Clinic Parking Deck	1,345	2001 (R)
Kracke Clinical Services Building	40,194	1928
Learning Resources Center	79,243	1970
Liberty National Building	24,909	1990 (R)
Lister Hill Library	49,125	1971
Lister Hill Library Addition	88,547	1996
Lister Hill Parking	13,224	1971
Lyons-Harrison Research Building	92,867	1960
Lyons-Harrison Research Building Addition	43,302	1966
Marshall Conference Center	3,234	1973 *
Mary Lewis Convalescent Home	28,900	1986 *
McCallum Basic Science Education and Research Facility	177,295	1985
Medical Education Building	49,893	1977
Medical Towers	57,985	1975 (R)
Midtown Center (Children's Hospital)	10,886	1999 (R)
Morningside Drive	2,900	1995 *
Mortimer Jordan Hall	28,965	1960 *
Mortimer Jordan Hall Addition	33,515	1970
Motor Pool (Storage)	6,017	1972 *
New Hillman Building	62,543	1928
Nursing Building	70,396	1971
Nursing Building Addition	9,994	1980
Nursing Building Addition II	7,264	1983
Nursing Building Parking	37,813	1971
Nursing Building West Addition	6,523	1992
OADI Technology Center (Genesis Center)	68,665	1997
Old Hillman Building	46,082	1902
Paula Building	4,936	2000 (R)
Pittman Center	6,899	1980
Police Annex	1,480	1992 *
Police Headquarters Building	12,713	1992 *
Police Support Building	3,893	1971 *
Quarterback Tower	91,135	1976
Radiology Film Storage Building	12,600	1992 (R)
Rast Hall (Student Residence)	130,344	1990
Richard M. Scrusby Building	76,643	2001
Rime Sportsplex	29,969	1993 *
ROTC Building	4,794	1975 *
Ruffner Mountain Transmitter Station	150	1975
Russell Wing, University Hospital	93,931	1977
Rust Center	29,404	1969
Rust Center Parking	53,751	1969
Ryals Public Health Building (Floors 1 & 2)	40,989	1996
Ryals Public Health Building (Floors 3 & 4)	36,971	1998
Ryals Public Health Building (Floors 5 & 6)	37,476	2000

UAB BUILDING SUMMARY (CONTINUED)

<u>Building Name</u>	<u>Gross Square Feet</u>	<u>Date Constructed/ Date Acquired*</u>
Samuel Ullman Museum	5,425	1993 *
Scene Shop	6,058	1975 *
School of Health Related Professions - Annex I	1,973	1986 *
School of Health Related Professions - Annex II	1,710	1986 *
Smolian International House	9,472	1992
Smolian Psychiatric Clinic	22,315	1960
Sorority Square Building	9,018	1989 *
Spain Rehabilitation Center	65,076	1963
Spain Rehabilitation Center Addition	35,659	1969
Spain Rehabilitation Center Addition II	50,975	1991
Spain Rehabilitation Center - Pizitz Memorial Pool Addition	3,008	1987
Spain Tower (South 1/2 Spain/Wallace Building)	127,298	1979
Spain Tower Kidney Transplant Unit Expansion	18,243	1982
Spain Tower 8th and 9th Floor Expansion	37,622	1984
Spencer Honors House	9,326	1903 *
Sterne Library	79,157	1973
Sterne Library Addition	90,371	1987
Tinsley Harrison Tower	131,656	1984
Town House	106,889	1985 *
Trauma Communications Center	1,696	1960 *
Trash Compactor Facility	2,262	1982
UAB Obstetrics Special Care	18,321	1983 *
UAB Substance Abuse Center	32,714	1993 *
Ullman Building	30,615	1910
Ullman - Bell Addition	46,189	1955
Ullman - Boiler Building	5,348	1978
Ullman - West Addition	20,414	1950
University Boulevard Parking Deck	258,807	1987
University Federal Credit Union	4,582	2000
University Hall (Student Residence)	41,700	1962
University Inn	89,515	1986 * (L)
University Optometric Group	2,334	1986 *
University Park Business Center	17,250	1990 (R)
University Stores Warehouse/Annex	156,697	1985 *
Veterans' Affairs Medical Center	5,978	1990 (R)
Volker Hall	394,804	1971
Volker Hall Basement Addition	35,626	1996
Volker Hall Parking	13,144	1971
Volker Hall Plaza Addition	11,211	1991
Wallace Physical Education Facility	52,655	1974
Wallace Tower (North 1/2 Spain/Wallace Building)	104,075	1979
Wallace Tower 7th, 8th, and 9th Floor Expansion	46,404	1984
Wallace Tumor Institute	73,211	1976
Wallace Tumor Institute - NMR Addition	11,830	1985
Wallace Tumor Institute - 4th, 5th, and 6th Floor Expansion	70,324	1992
Waste Holding Facility	18,780	1987 *

UAB BUILDING SUMMARY (CONTINUED)

<u>Building Name</u>	<u>Gross Square Feet</u>	<u>Date Constructed/ Date Acquired*</u>
WBHM	4,510	1971
WBHM Addition	2,640	1980
Webb Nutrition Sciences Building	71,443	1983
West Pavilion	387,877	1991
West Playing Fields Building	800	1996
White Building	3,338	1991 *
Woodward Estate	31,339	1971 *
Worrell Building	37,484	1986 *
Young Memorial Field Building	638	1984
Zeigler Research Center	115,116	1971
6th Avenue Parking Deck	411,148	1982
6th Avenue Park Deck Addition	247,458	2001
501 Building	60,000	2001 *
7-11 Building	5,387	1971 *
725 Building	14,139	1999 (R)
910 Building	2,728	1972
912 Building	25,455	2001
917 Building	3,520	1974 *
5th Avenue Parking Deck	281,000	2000 (R)
9th Avenue Parking Deck	215,747	1996
10th Avenue Parking Deck	146,308	1981 *
1006 19th Street South (Johnson House)	7,865	1985 *
1043 9th Avenue South	3,204	1975 *
1055 Building	8,157	1974 *
1101 Building	2,800	2001 *
1430 Warehouse	25,688	1995 *
15th Street Classroom Building	16,145	1973
15th Street Office Building	26,161	1968 *
1521 Building	8,690	1990 *
1801 Building	6,840	2001 (R)
19th Street Parking Deck	195,491	1970
19th Street Parking Deck Expansion	101,220	1991
1515 Building	10,000	2001 (R)
2020 Building	9,854	1988 *
8215 Building	1,083	1999 (R)

(R) = Externally owned; UAB rents space

(L) = UAB-owned; space leased out

Source: Campus Planning - Space Planning and Analysis

UAB BUILDING SUMMARY (CONTINUED)

Under Construction (FY 01-02)

Center for Psychiatric Medicine (3rd floor)
 Biomedical Research Building II
 Hospital Renovation Projects
 School of Dentistry Renovations
 UAB Communications Infrastructure upgrade
 Volker Hall addition/renovation
 Volker Hall renovation (5th and 6th floors)

In Design

Alys Stephens Center – Phase III completion
 Interdisciplinary Biomedical Research Building
 North Pavilion
 15th Street Closing
 Peters Building Ground Floor renovation
 Dentistry Building – Phase III renovation
 Student Recreation Center
 University Boulevard West Parking Deck
 Hulsey Center renovation
 Worrell Building addition
 Hospital Renovation Projects

Additional Existing Buildings - University Related

Children's Hospital of Alabama
 Cooper Green Hospital
 Medical Alumni Building
 The Kirklin Clinic
 Veterans' Affairs Medical Center
 Southern Research Institute

Source: Campus Planning - Space Planning and Analysis

UAB SPACE BY FUNDING UNIT (Gross Square Feet)

<u>Year</u> <u>(as of 6/30)</u>	<u>Educational/</u> <u>General</u>	<u>Auxiliary</u>	<u>Hospital</u>	<u>Total</u>
1980	2,732,852	No breakdown available		
1985	3,176,269	1,852,871	1,208,951	6,238,091
1990	3,987,318	2,658,145	1,543,062	8,188,525
1995	4,717,977	3,199,602	2,120,623	10,038,202
2000	5,248,700	3,617,182	2,007,712	10,873,594
2001	5,530,830	3,712,002	1,974,078	11,216,910

Note: Includes space leased by UAB and space rented out to others; excludes shell space.

Source: ACHE Space Distribution Report (Campus Planning - Space Planning and Analysis)

UAB SPACE DISTRIBUTION (AS OF SEPTEMBER 30, 2000)

<u>Space Use</u>	<u>Total Net Assignable Square Feet</u>	<u>Central Administration</u>
Classroom Facilities	167,390	0
Laboratory Facilities		
Instructional	363,098	0
Sponsored Research	509,950	0
Other	201,118	1,655
Office Facilities	1,799,325	279,400
Central Libraries (excludes offices)	206,488	0
Special Use Facilities	272,820	52,165
(Athletic/Physical Education, Audiovisual-Radio-TV, Nonhealth Professional Clinics, Demonstration, and Greenhouses)		
General Use Facilities	503,509	194,583
(Assembly, Exhibition, Food Facility, Lounge, Day Care, Merchandising, Recreation, Meeting Rooms, and Locker Rooms)		
Support Facilities	541,751	331,849
(Central Computer, Telecommunications, Shop, Storage, Central Service, and Hazardous Materials)		
Parking Facilities	1,705,134	0
(Highrise Parking and Enclosed Parking)		
Health Care Facilities	532,705	99
(Patient Bedrooms, Patient Baths, Nurse Stations, Surgery, Treatment, Service Laboratory, Supplies, Public Waiting, Health Care Service, Call Rooms, and Staff Support Space)		
Residential Facilities	599,174	28,203
(Apartments, Dormitories, Houses, and Hotel Rooms)		
Unclassified	46,224	1,752
(Space not assigned or to be renovated)		
TOTAL	7,448,686 ⁽²⁾	889,706

⁽¹⁾ Includes Schools of Dentistry, Medicine, and Optometry

⁽²⁾ Excludes shelled space.

Source: Space Planning and Analysis

<u>Joint Health Sciences/First Professional ⁽¹⁾</u>	<u>General Academic</u>	<u>University Hospital</u>	<u>Auxiliary</u>	<u>Noninstitutional Agency</u>
35,960	131,430	0	0	0
160,767	202,331	0	0	0
443,371	66,579	0	0	0
79,695	54,453	28,504	1,003	35,808
799,024	375,559	238,555	33,817	72,970
67,930	138,088	470	0	0
103,368	1,018	35,000	71,045	10,224
62,550	44,549	105,582	69,501	26,744
61,724	68,625	50,896	23,404	5,253
0	0	0	1,705,134	0
40,372	0	491,681	0	553
7,841	0	0	427,419	135,711
12,626	29,075	47	0	2,724
1,875,228	1,111,707	950,735	2,331,323	289,987

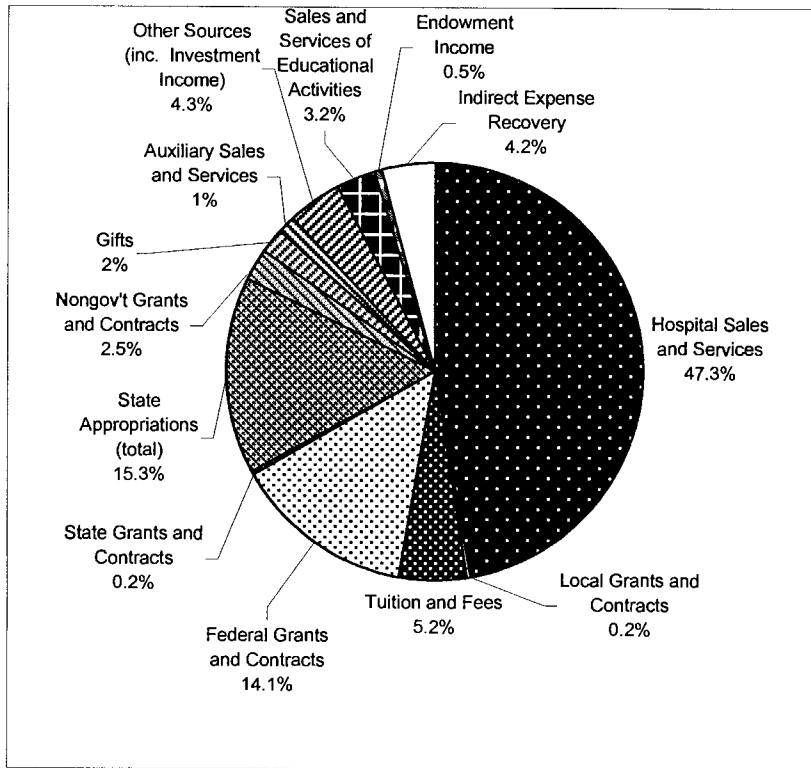
UAB FINANCIAL PROFILE
FY 2000-01 ACTUAL and FY 2001-02 BUDGETED

<u>Revenues:</u>	<u>Actual FY 2000-01</u>	<u>Original Budget FY 2001-02</u>
Tuition and Fees	\$70,428,564	\$63,581,000
State Appropriations (educational and general)	178,753,774	185,188,000
Federal Grants and Contracts	191,059,626	189,260,000
State Grants and Contracts	2,279,192	2,412,000
Local Grants and Contracts	2,213,734	1,941,000
Nongovernmental Grants and Contracts	33,701,669	32,823,000
Indirect Expense Recovery	56,068,632	45,333,000
Gifts	24,124,841	22,955,000
Endowment Income	6,158,478	6,223,000
Sales and Services of Educational Activities	42,686,921	39,238,000
Hospital - Sales and Services and Other	638,461,233	677,976,000
Hospital - State Appropriations	27,404,605	28,085,000
Auxiliary Enterprises - Sales and Services	18,875,329	19,462,000
Auxiliary Enterprises - State Appropriations	824,539	800,000
Investment Income	26,073,561	(included in other)
Other Sources	31,733,879	48,073,000
TOTAL REVENUES	\$1,350,848,577	\$1,363,350,000
<u>Expenditures, Transfers, and Reserves:</u>		
Educational and General:		
Instruction	\$173,492,319	\$172,670,000
Research	195,705,928	189,753,000
Public Service	93,257,740	95,756,000
Academic Support	48,414,155	48,909,000
Student Services	14,367,938	13,399,000
Institutional Support	42,984,478	41,960,000
Operation and Maintenance of Plant	35,766,527	41,555,000
Scholarships and Fellowships	29,556,701	23,187,000
Subtotal - Educational and General Expenditures	<u>\$633,545,786</u>	<u>\$627,189,000</u>
Mandatory Transfers	10,584,488	10,212,000
Total - Educational and General and Mandatory Transfers	<u>\$644,130,274</u>	<u>\$637,401,000</u>
Hospital Expenditures and Mandatory Transfers	\$598,171,746	\$669,617,000
Auxiliary Enterprises and Mandatory Transfers	28,844,803	25,497,000
Other Transfers and Reserves	79,701,754	30,835,000
TOTAL EXPENDITURES, TRANSFERS, AND RESERVES	\$1,350,848,577	\$1,363,350,000

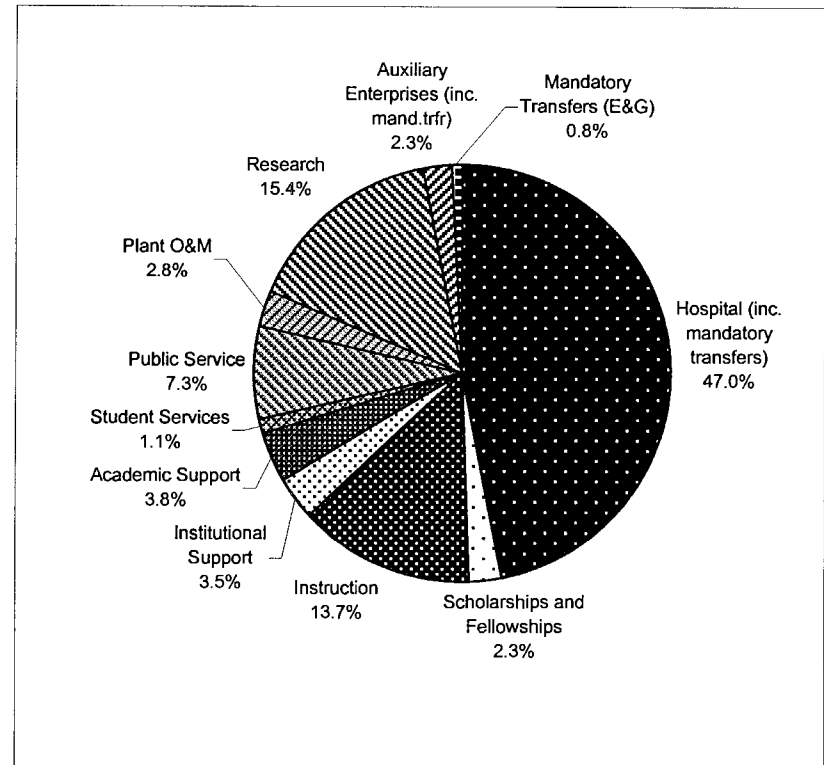
Source: UAB Financial Statement for FY 2000-01 and Original Operating Budget for FY 2001-02

UAB FINANCIAL OPERATIONS ACTUAL FY 2000-01

REVENUES

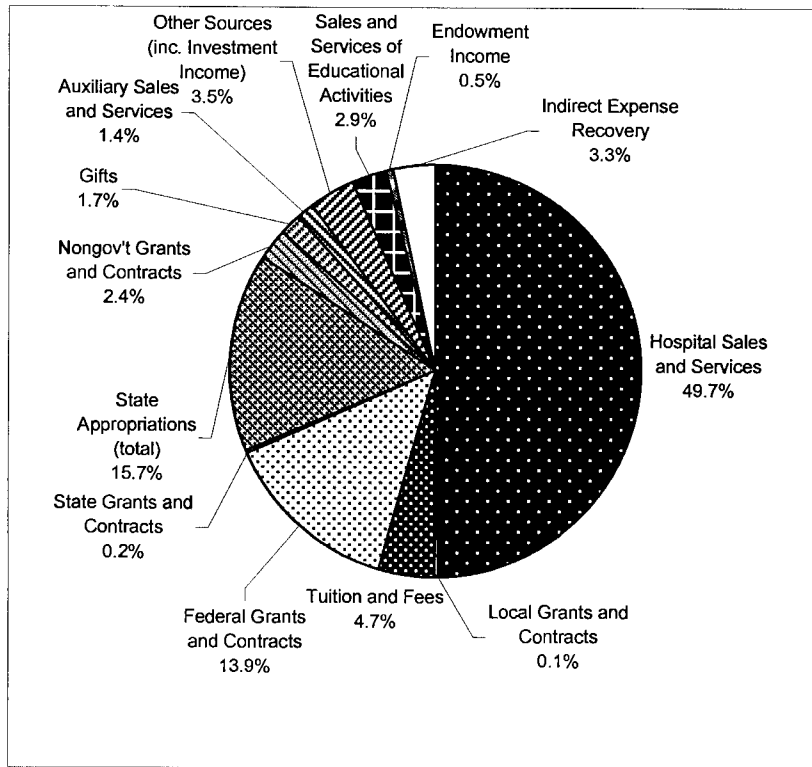


EXPENDITURES AND MANDATORY TRANSFERS

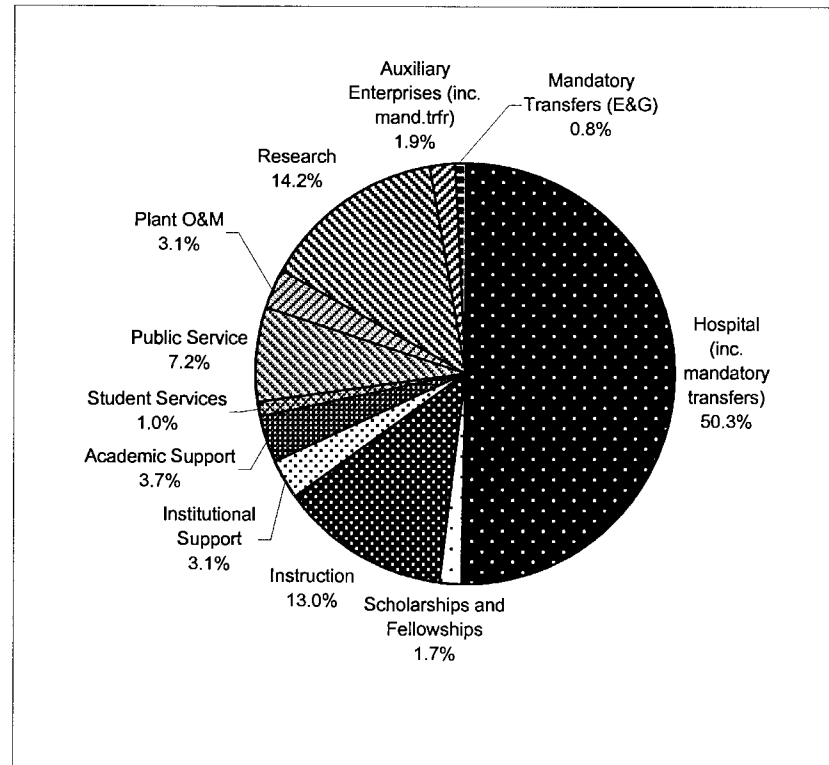


UAB FINANCIAL OPERATIONS BUDGETED FY 2001-02

REVENUES



EXPENDITURES AND MANDATORY TRANSFERS



**SELECTED UAB FINANCIAL HIGHLIGHTS
FY 1996-97 THROUGH FY 2000-01**

<u>Item</u>	<u>1996-97</u>	<u>1997-98</u>	<u>1998-99</u>	<u>1999-2000</u>	<u>2000-01</u>
Tuition and Fees	\$50,917,141	\$55,127,866	\$59,112,788	\$61,946,058	\$70,428,564
State Appropriations ¹	181,917,550	183,192,869	192,913,419	208,117,051	206,982,918
Gifts, Grants & Contracts ²	224,620,469	245,976,228	252,694,573	279,898,751	309,447,694
Total Revenues	1,104,893,693	1,170,238,865	1,230,152,242	1,239,141,485	1,350,848,577
Total Assets	1,530,880,140	1,593,971,902	1,574,978,200	2,062,655,435	2,108,147,165
Instructional Expenditures	139,869,785	142,523,191	146,361,431	153,978,155	173,492,319
Hospital Expenditures ³	488,593,562	542,050,758	588,824,222	551,243,540	598,171,746
Auxiliary Expenditures ³	21,083,335	22,677,473	23,627,503	24,723,617	28,844,803

NOTE: Financial data are based on the published financial statement for that year and do not necessarily reflect subsequent changes in accounting practices.

¹Includes state appropriations for educational and general (E&G), hospital, and auxiliary enterprises.

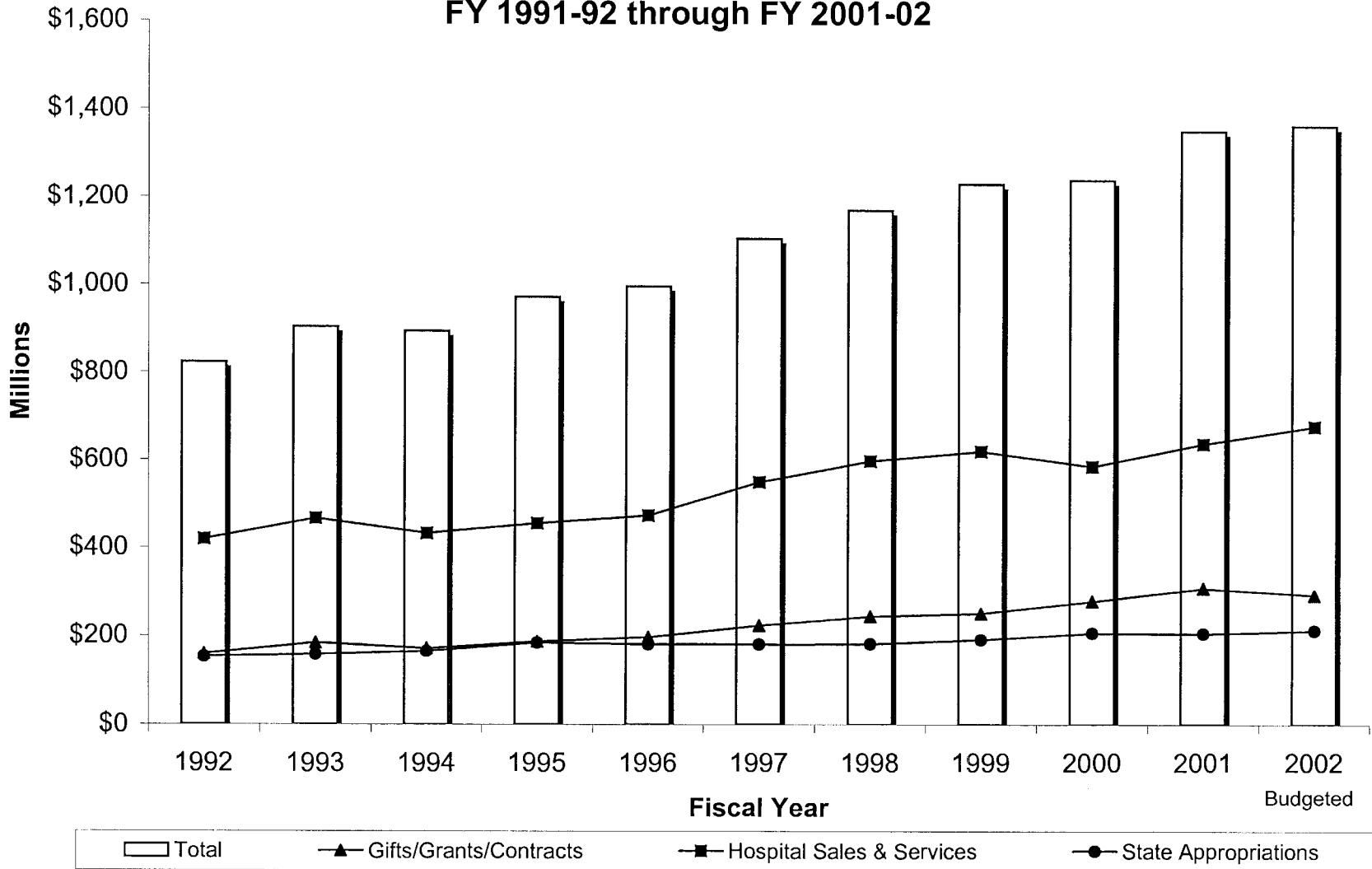
²Includes indirect cost recovery.

³Includes mandatory transfers.

Source: Published UAB Financial Statements, 1996-97 to 1997-98 Financial Statements excluding UAB Walker College, and the Office of Associate Vice President for Financial Affairs

**University of Alabama at Birmingham
Revenues from Selected Sources and Total
FY 1991-92 through FY 2001-02**

06



UAB PRIMARY PROGRAM EXPENDITURES for FY 1995-96 through FY 2000-01

Fiscal Year	Instructional Expenditures		Research Expenditures		Public Service Expenditures		Total E&G Expenditures ¹	Composite Total Primary Prog. Expend.	
	\$ Amount	% of E&G	\$ Amount	% of E&G	\$ Amount	% of E&G		\$ Amount	% of E&G
1995-96	134,966,770	29.28%	130,587,097	28.33%	66,459,324	14.42%	460,931,744	332,013,191	72.03%
1996-97	139,869,785	28.99%	149,652,921	31.01%	72,856,803	15.10%	482,541,764	362,379,509	75.10%
1997-98	142,523,191	27.93%	167,956,272	32.91%	74,837,603	14.66%	510,315,866	385,317,066	75.51%
1998-99	146,361,431	26.60%	171,831,840	31.23%	73,287,739	13.32%	550,266,549	391,481,010	71.14%
1999-2000	153,978,155	25.96%	175,667,037	29.61%	92,304,656	15.56%	593,225,526	421,949,848	71.13%
2000-01	173,492,319	27.38%	195,705,928	30.89%	93,257,740	14.72%	633,545,786	462,455,987	72.99%
TOTAL	\$891,191,651	27.58%	\$991,401,095	30.69%	\$473,003,865	14.64%	\$3,230,827,235	\$2,355,596,611	72.91%

UAB ADMINISTRATIVE EXPENDITURES for FY 1995-96 through FY 2000-01

Fiscal Year	Institutional Support Expenditures		Student Services Expenditures		Operations & Maintenance of Plant Expenditures		Total E&G Expenditures ¹	Composite Total Administrative Expenditures	
	\$ Amount	% of E&G	\$ Amount	% of E&G	\$ Amount	% of E&G		\$ Amount	% of E&G
1995-96	41,106,735	8.92%	8,643,479	1.88%	29,242,170	6.34%	460,931,744	78,992,384	17.14%
1996-97	32,566,455	6.75%	8,271,684	1.71%	26,610,777	5.51%	482,541,764	67,448,916	13.98%
1997-98	31,861,487	6.24%	10,204,856	2.00%	34,717,076	6.80%	510,315,866	76,783,419	15.05%
1998-99	58,629,925	10.65%	11,321,870	2.06%	32,786,200	5.96%	550,266,549	102,737,995	18.67%
1999-2000	60,127,906	10.14%	12,155,167	2.05%	36,676,468	6.18%	593,225,526	108,959,541	18.37%
2000-01	42,984,478	6.78%	14,367,938	2.27%	35,766,527	5.65%	633,545,786	93,118,943	14.70%
TOTAL	\$267,276,986	8.27%	\$64,964,994	2.01%	\$195,799,218	6.06%	\$3,230,827,235	\$528,041,198	16.34%

NOTE: Financial data are based on the published financial statement for that year and do not necessarily reflect subsequent changes in accounting practices.

¹Total E&G Expenditures do not include mandatory transfers.

Source: Published UAB Financial Statements. UAB Walker College data removed from 1995-96 to 1997-98 Financial Statements for purposes of analysis.

**STATE FUNDING FROM THE
EDUCATIONAL TRUST FUND AS ENACTED
FY 1967-68 TO FY 2001-02**

<u>Fiscal Year</u>	<u>UAB Request</u>	<u>ACHE Recommendation</u>	<u>Governor's Recommendation</u>	<u>Original Appropriation</u> ¹
2001-02 ¹¹	\$256,627,315	\$231,907,993	\$205,919,985	\$213,335,122 ¹²
2000-01 ¹¹	\$228,226,882	\$224,484,654	\$219,532,486	\$219,912,486 ¹²
1999-2000 ¹¹	220,240,493	212,400,799	203,248,005	207,478,983
1998-99 ¹¹	217,954,281	198,359,499	191,112,548	192,564,684
1997-98	197,376,459	195,086,299	182,987,673	183,984,625
1996-97 ¹⁰	216,099,194	191,571,618	159,292,757	182,755,980
1995-96 ⁸	196,784,010	179,743,681	145,338,599	182,655,980 ^{7,9}
1994-95	174,086,656	170,217,281	163,068,408	165,184,208 ⁷
1993-94	174,374,421	156,690,187	²	146,291,307 ⁷
1992-93 ⁶	173,166,984	144,241,231	²	136,230,017
1991-92 ⁵	157,091,034	137,635,377	²	140,081,381
1990-91	148,171,566	136,489,897	²	128,399,290
1989-90	136,927,929	126,808,097	²	115,759,036
1988-89 ⁴	127,513,440	113,630,997	²	117,179,843
1987-88	122,426,275	102,672,967	97,632,142	98,635,173
1986-87	139,973,045	114,677,669	96,662,640	97,162,640
1985-86	119,191,528	106,927,000	105,138,359	107,388,359
1984-85	101,242,132	93,758,000	86,625,930	87,275,930
1983-84	99,579,000	93,071,000	70,272,751	70,701,053
1982-83	108,721,564	87,329,341	69,952,098	69,676,355
1981-82	104,673,576	83,704,000	62,172,442	63,975,600
1980-81	97,723,505	84,563,800	67,950,000	68,350,000
1979-80	98,497,422	75,784,800	59,970,512	60,170,512
1978-79	79,541,318	62,707,368	61,159,512	59,970,512
1977-78	60,757,369	52,747,352	50,946,789	47,707,789
1976-77	59,314,197	41,144,509	34,093,400	37,057,200
1975-76	36,357,498	30,636,318	34,093,400	38,443,400
1974-75	28,249,988	25,702,448	23,839,507	25,101,220
1973-74	25,336,139	23,399,914	21,742,525	20,403,000
1972-73	27,432,974	³	13,035,704	14,673,988
1971-72	22,330,398	-	13,035,704	12,583,000
1970-71	26,371,000	-	10,327,647	8,958,000
1969-70	19,565,000	-	9,567,217	8,095,000
1968-69	9,863,016	-	5,514,236	7,192,342
1967-68	8,940,424	-	5,514,236	5,720,000

¹ Appropriations are shown as originally enacted. Budgets have been prorated as follows: 1978-79 - 2.9811%; 1979-80 - 6.1406%; 1980-81 - 3.568%; 1985-86 - 4.1233%; 1990-91 - 6.5%; 1991-92 - 3%, 2000-01 - 6.2%. In FY 1992-93, UAB received supplemental appropriations totalling \$3,351,070.

² The Governor's Recommendation contained one amount for the University of Alabama System.

³ The Alabama Commission on Higher Education made its first recommendation in the 1973-75 biennium.

⁴ Beginning in FY 1988-89, figures include funding for Special Mental Health. Prior to FY 1988-89, funding for Special Mental Health was allocated separately. Since ACHE does not make a recommendation for Special Mental Health funding, the prior year's appropriation is substituted as the recommendation.

⁵ Original Appropriation amount includes FICA. FICA was not included in UAB's request or ACHE's recommendation.

⁶ FICA is included in all figures from FY 1992-93 forward.

⁷ In FY 1993-94, UAB also received \$100,000 for minority business recruitment and \$300,000 for the Beville Center for Biotechnology. In FY 1994-95 and FY 1995-96, UAB received \$350,000 for the Beville Center.

⁸ From FY 1995-96 to FY 1998-99, data include UAB Walker College where appropriate.

⁹ Original appropriation includes teachers retirement of \$29,763,321 which was directly appropriated to UAB.

¹⁰ Beginning in FY 1996-97, figures include funding for teachers retirement. Since ACHE did not make a recommendation for teachers retirement funding in FY 1996-97, the prior year's appropriation is substituted as the recommendation.

¹¹ In FY 1998-99 and FY 1999-00, UAB also received \$348,735 to fund a teacher in-service center in the School of Education.

In FY 2000, the amount was increased to \$351,606. In FY 2002, \$296,825 was allocated for UAB through the Dept. of Education.

¹² UAB also received line items for the Cystic Fibrosis Center (\$200,000) and the Holmes Brain Tumor Research Center (\$200,000) in FY 2000-01. In FY 2001-02, both lines were reduced to \$178,220, and UAB received \$84,420 for the emergency medicine residency program.

Source: Alabama Commission on Higher Education Unified Budget Recommendations

**SUMMARY OF ACTIVE UAB GRANTS AND CONTRACTS
AS OF SEPTEMBER 1, 2001**

	<u>Federal</u>	<u>Industrial</u>	<u>Other Non-Federal</u>	<u>Total</u>	<u>Percent of Total</u>
Arts and Humanities	\$13,850	\$0	\$56,550	\$70,400	0.0%
Business	1,635,646	0	80,000	1,715,646	0.5%
Dentistry	3,072,378	1,278,279	68,050	4,418,707	1.4%
Education	1,317,113	88,475	819,615	2,225,203	0.7%
Engineering	6,188,416	1,118,699	1,498,855	8,805,970	2.7%
Health Related Professions	4,883,813	80,000	130,000	5,093,813	1.6%
Joint Health Sciences	49,645,900	3,088,538	4,583,883	57,318,321	17.6%
Medicine	122,006,798	45,953,308	19,764,554	187,724,660	57.7%
Natural Sciences and Mathematics	5,152,812	284,801	941,351	6,378,964	2.0%
Nursing	1,446,474	90,000	402,479	1,938,953	0.6%
Optometry	15,495,261	168,302	2,926,701	18,590,264	5.7%
Public Health	14,446,563	1,773,118	1,664,829	17,884,510	5.5%
Social and Behavioral Sciences	6,777,414	300,000	874,255	7,951,669	2.4%
Graduate School	1,140,143	0	0	1,140,143	0.4%
Lister Hill Library	0	0	0	0	0.0%
Mervyn Sterne Library	4,084	0	19,213	23,297	0.0%
Special Studies (formerly UAB Options)	255,090	0	230,120	485,210	0.1%
Provost's Office General	2,476,305	0	0	2,476,305	0.8%
Central Administration General	826,801	159,258	168,500	1,154,559	0.4%
UAB TOTAL	\$236,784,861	\$54,382,778	\$34,228,955	\$325,396,594	100.0%
Percent of Total	72.8%	16.7%	10.5%	100.0%	

NOTE: These data were generated from the R/SIS grants and contracts computer system.

Source: Office of Grants and Contracts Administration

**UAB ACTIVE GRANTS AND CONTRACTS
1989 - 2001**

<u>Year</u>	<u>Federal Research</u>	<u>Federal Training</u>	<u>Federal Other</u>	<u>Non- Federal</u>	<u>Total</u>
1989	76,013,460	5,959,269	2,189,288	21,409,859	105,571,876
1990	73,362,110	6,464,429	1,204,459	18,821,860	99,852,858
1991	79,367,375	7,719,628	2,350,708	22,340,919	111,778,630
1992	90,849,191	9,091,310	1,451,554	24,904,183	126,296,238
1993	104,922,402	10,731,930	1,677,795	33,079,580	150,411,707
				Other	
		<u>Federal</u>	<u>Industrial</u>	<u>Non-Federal</u>	<u>Total</u>
1994 ¹		\$128,092,675	\$25,877,303	\$13,576,555	\$167,546,533
1995		139,044,944	34,372,024	19,879,986	193,296,954
1996		149,592,930	37,989,814	20,049,412	207,632,156
1997		179,982,530	44,535,185	23,019,763	247,537,478
1998		187,145,868	45,896,242	25,173,600	258,215,710
1999		213,798,343	46,249,907	26,902,532	286,950,782
2000		222,292,181	46,310,557	35,851,258	304,453,996
2001		236,784,861	54,382,778	34,228,955	325,396,594

¹Beginning in 1994, data were generated from the R/SIS grants and contracts computer system.

Source: Office of Grants and Contracts Administration, data as of July 15 for 1989-1993; data as of September 1 for 1994-2001. All figures exclude UAB Walker College.