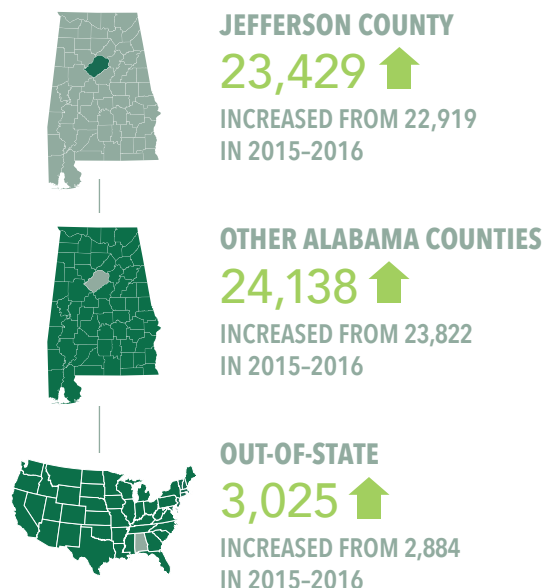


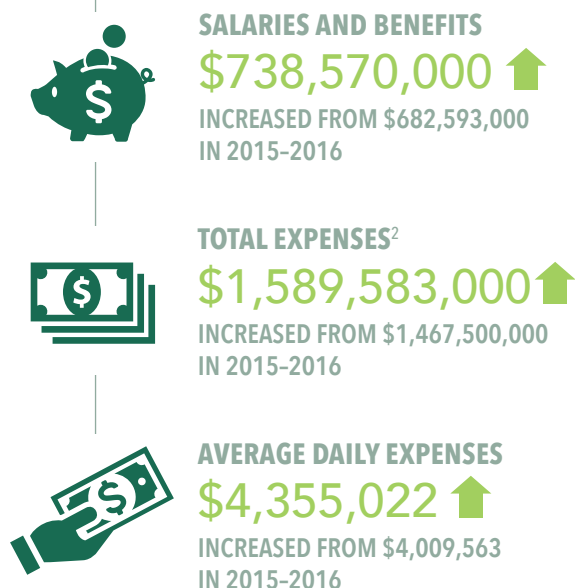
## UAB HOSPITAL STATISTICAL HIGHLIGHTS FOR 2016-2017

### PREVIOUS YEAR COMPARISON

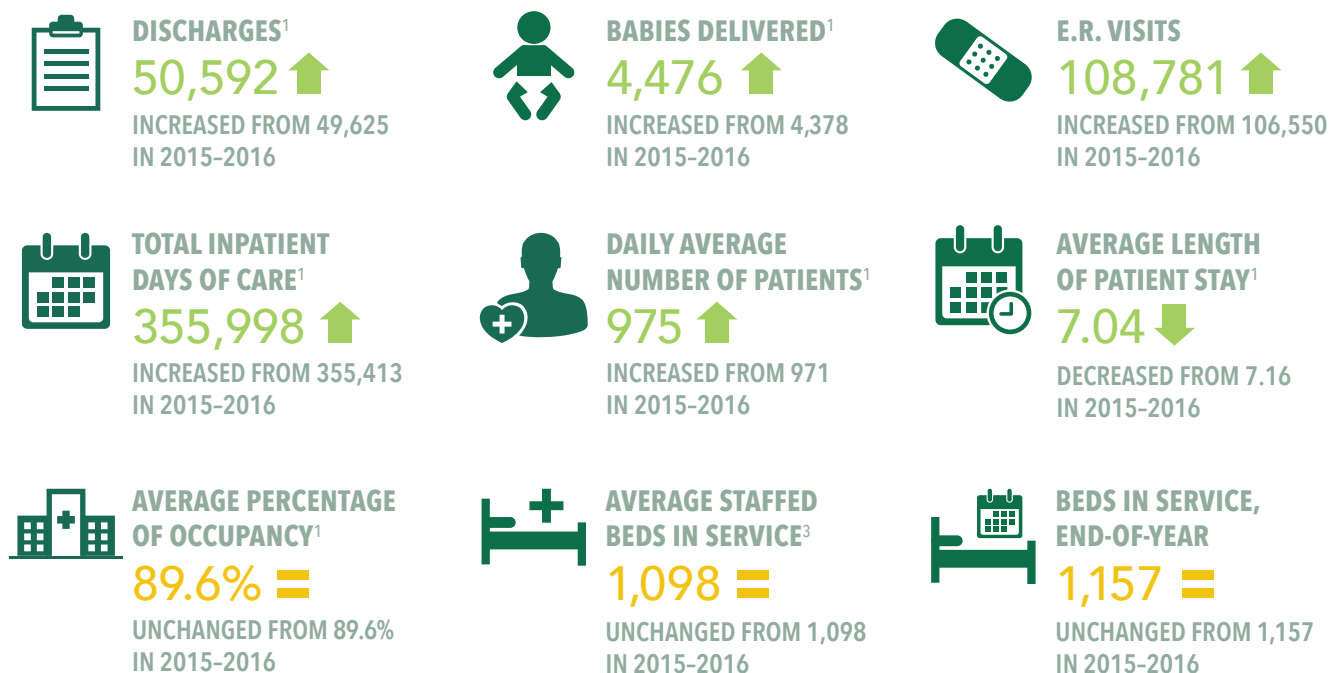
#### DISCHARGES BY PATIENT ORIGIN<sup>1</sup>



#### FINANCIAL INFORMATION



#### PATIENT INFORMATION<sup>1</sup>



<sup>1</sup> Includes transfers for depreciation and interest.

<sup>2</sup> Does not include transfers for the SOM or Health System.

<sup>3</sup> UAB Hospital is currently licensed for 1,157 beds.