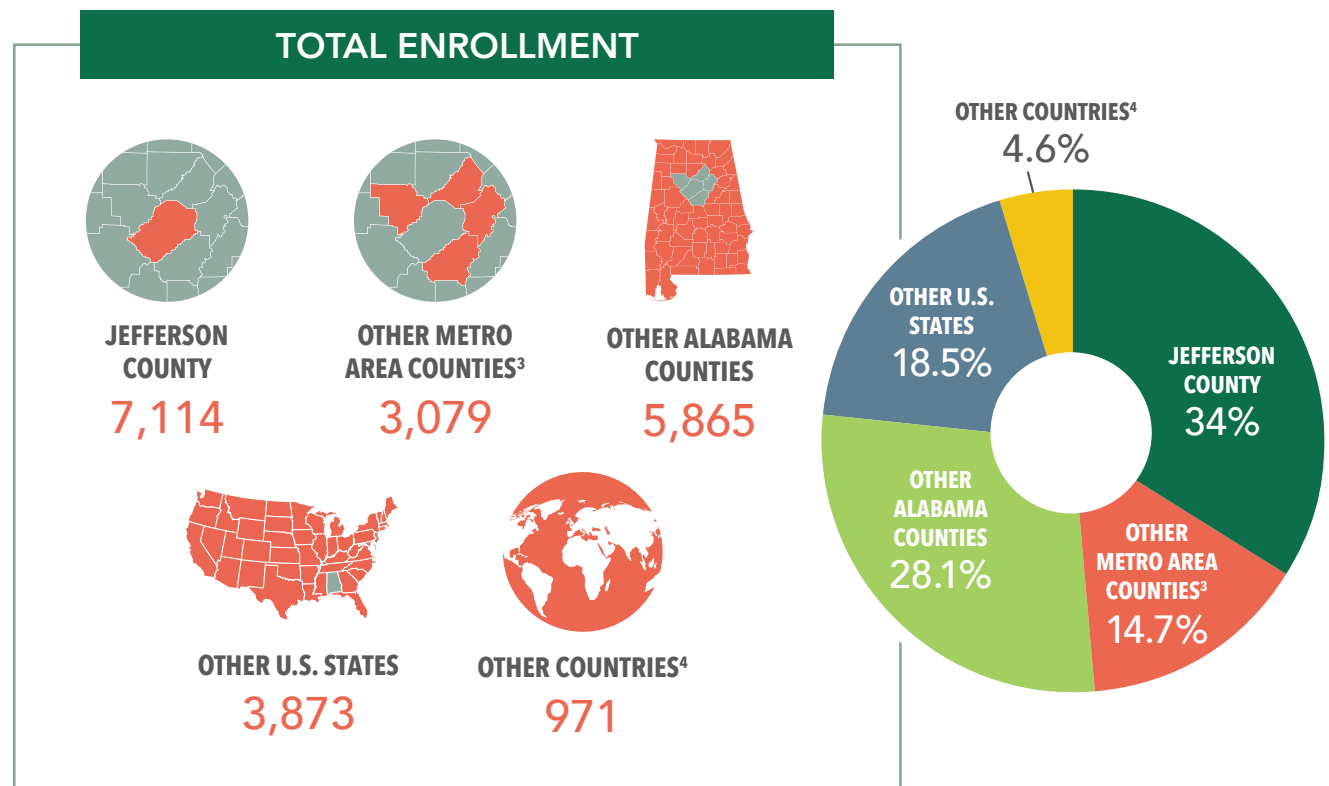


# UAB ENROLLMENT BY STUDENT SOURCE

FALL 2017

	FRESHMEN <sup>1</sup>	UNDERGRADUATE	GRADUATE	DMD/MD/OD	TOTAL <sup>2</sup>
JEFFERSON COUNTY	622	4,716	1,863	535	<b>7,114</b>
OTHER METRO AREA COUNTIES <sup>3</sup>	411	2,389	613	77	<b>3,079</b>
OTHER ALABAMA COUNTIES	902	4,137	1,352	376	<b>5,865</b>
OTHER U.S.	330	1,542	2,178	153	<b>3,873</b>
OTHER COUNTRIES <sup>4</sup>	34	350	616	5	<b>971</b>
<b>TOTAL STUDENTS</b>	<b>2,299</b>	<b>13,134</b>	<b>6,622</b>	<b>1,146</b>	<b>20,902</b>



<sup>1</sup> First-Time Freshmen

<sup>2</sup> Blount, Shelby, St. Clair, and Walker Counties

<sup>3</sup> Does not include Advanced Professionals

<sup>4</sup> Graduate students in other countries represents 615 non-US citizens and one nonmilitary US citizen living abroad at time of census (9-8-17).

SOURCE: UAB Institutional Effectiveness and Analysis