

# 2007-2017 DEEP SOUTH RCMAR SCHOLAR DIRECTORY



## DEEP SOUTH Resource Center for Minority Aging Research



**Oluwatoyosi Adekeye, MBBS, MPH**  
Assistant Professor  
Community Health and Health Prevention  
Morehouse School of Medicine  
[oadekeye@msm.edu](mailto:oadekeye@msm.edu)

**HD RTP Scholar  
2011**

**Dr. Adekeye's** research interests include health policy, cultural competency, and health promotion.



**Tomi Akinyemiju, PhD, MSc**  
Associate Professor and Assistant Dean  
College of Public Health  
The University of Kentucky  
[tomiakin@uab.edu](mailto:tomiakin@uab.edu)

**Pilot Grant 2015**

**Dr. Akinyemiju** was an Assistant Professor of Epidemiology at the University of Alabama, Birmingham. She completed a post-doctoral fellowship at the Columbia University Mailman School of Public Health, and received her PhD in Epidemiology at the University of Michigan, Ann Arbor. Her research has focused on understanding racial disparities in breast cancer screening, mortality and survival in the US. She has investigated the multilevel determinants of racial disparities by focusing on upstream factors such as individual and neighborhood level socio-economic status and healthcare resources. Currently, she is interested in examining the risk for young onset, highly aggressive breast cancer among women of African descent. She is now at the University of Kentucky, Lexington, as Associate Professor/Assistant Dean for Inclusion in the College of Public Health.



**Abimobola Akomolafe, MD, MPH**  
Assistant Professor  
Morehouse School of Medicine  
[akomola@msm.edu](mailto:akomola@msm.edu)

**HD RTP Scholar  
2008**

**Dr. Akomolafe**, in the Geriatric Section of the Department of Medicine at Morehouse School of Medicine Chief, is involved in research on Genetic Epidemiology of Alzheimer Disease. As the section chief for Geriatrics, her emphasis for the residents is to develop them as excellent physicians caring for our elderly population. The demographics of the population in the United States are changing and over 13% of the population is over the age of 65 years. Over six residents have gone on to complete a fellowship in geriatrics.

## 2007-2017 DEEP SOUTH RCMAR SCHOLAR DIRECTORY



**Foluke Alli, MD, NCMP**  
Assistant Professor  
UAB Family & Community Medicine  
Internal Medicine  
[fmalli@uabmc.edu](mailto:fmalli@uabmc.edu)

**HD RTP 2015**

**Dr. Alli** is a board certified family medicine physician with additional training in women's health. Her area of focus include menopause and menopause related medical conditions including hormone therapy, abnormal vaginal bleeding, and urinary incontinence. My research interest is on health disparities in women's health with a focus on menopause. She is a member of the American Academy of Family Physicians and is certified with the North American Menopause Society. Dr. Alli left UAB in 2016.



**Andrei Barasch, DMD, MDSc**  
Private Dental Practice

**Pilot Grant 2008**

**Dr. Barasch** is an Oral Medicine specialist whose research interests are focused on the treatment of oral cancers and oral care for the medically complex patient.



**Amy Beasley, DNP, RN**  
Clinical Assistant Professor  
Capstone College of Nursing  
University of Alabama  
[amy.m.beasley@ua.edu](mailto:amy.m.beasley@ua.edu)

**HD RTP 2015**

**Dr. Beasley's** main concentration in nursing practice involves hospice and palliative care. She worked as a hospice case manager and is a National Board Certified Hospice and Palliative Nurse (NBCHPN). Her interests include pain and symptom management at the end of life and rural community healthcare access.

## 2007-2017 DEEP SOUTH RCMAR SCHOLAR DIRECTORY



**Justin Blackburn, PhD**  
Assistant Professor,  
Department of Health Care Organization and Policy  
UAB School of Public Health  
[jblackburn@uab.edu](mailto:jblackburn@uab.edu)

**Pilot Grant 2013**

**Dr. Justin Blackburn** is an assistant professor of outcomes research in the Department of Health Care Organization & Policy at the University of Alabama at Birmingham. His research is primarily focused on using large secondary data sources, such as medical billing claims from Medicaid and Medicare, to answer questions about health outcomes, health services utilization, and changes in health policy. He has published articles on a variety of topics including agricultural health, eye injuries, homicide, cancer, asthma, cost-sharing within public insurance, low-severity emergency department visits, and preventive dental care. Future and ongoing research includes long-term care policy and outcomes as well as the use of secondary stroke prevention medications. Dr. Blackburn holds a PhD in epidemiology from UAB and a MPH from the University of Kentucky.



**Pamela Bowen, PhD, CRNP, FNP-BC**  
Assistant Professor  
UAB School of Nursing  
[pbowen@uab.edu](mailto:pbowen@uab.edu)

**HD RTP 2013  
HD RTP Pilot Grant  
2015**

**Dr. Bowen** has more than 15 years of experience as a certified family nurse practitioner. Her patient population has been predominantly African Americans with obesity-related chronic illnesses, such as hypertension, diabetes, arthritis, and heart disease. Her area of research focuses on minority health and aging, specifically as it relates to physical activity and obesity. The rates of obesity and obesity-related illnesses in Southeastern minority populations are trending at a faster pace than in other parts of the country. Because obesity disproportionately affects minority populations, exacerbations of existing health disparities will more likely continue into older adulthood. Currently, Dr. Bowen's program of research is focusing on improving the overall health of the African American population through disease prevention, health promotion, and health policy.



**Todd Brown, MD**  
Assistant Professor of Medicine  
UAB Division of Cardiovascular Disease  
[tmbrown@uab.edu](mailto:tmbrown@uab.edu)

**Pilot Grant 2012**

**Dr. Brown's** research interests: Acquired heart disease, Coronary artery disease, Cardiomyopathy, Congestive heart failure, Diastolic heart failure, Heart failure, Hypertension, Exercise testing, Treadmill testing, Pharmacological stress test, Myocardial viability, Non-invasive cardiac imaging, Nuclear cardiac imaging, Nuclear cardiology, Peripheral arterial disease, Peripheral vascular disease, Cardiac Rehabilitation, Lipid management, Preventive cardiology, Valvar heart disease, Chest Pain, Angina pectoris, Hyperlipidemia, Family history of coronary artery disease.

# 2007-2017 DEEP SOUTH RCMAR

## SCHOLAR DIRECTORY



**Lee Caplan, MD, PHD, MPH**  
Professor and Resident Research Advisor  
Morehouse School of Medicine  
[lcaplan@msm.edu](mailto:lcaplan@msm.edu)

**Pilot Grant 2008**

**Dr. Caplan's** research interests include cancer disparities and developing training programs to develop cancer disparities researchers, cancer prevention and control, and religion/spirituality and health.



**Olivio J. Clay, PhD, MA**  
Associate Professor  
UAB Department of Psychology  
[oclay@uab.edu](mailto:oclay@uab.edu)

**HD RTP 2008**  
**Diversity**  
**Supplement 2010**  
**Pilot Grant 2016**

**Dr. Clay's** research interests: Racial/ethnic health disparities within older adults, caregiving, social support, diabetes, healthcare utilization, advanced statistical methods, mobility and cognition in older adults.



**Michael Crowe, PhD**  
Associate Professor  
UAB Department of Psychology  
Director, Undergraduate Psychology Honors Program; Assistant Director, Roybal Center for Research in Applied Gerontology  
[mgcrowe@uab.edu](mailto:mgcrowe@uab.edu)

**Pilot Grant 2008**

**Dr. Crowe's** research expertise is in the area of cognitive decline and dementia in older adults. He has authored a number of publications on how potentially modifiable factors such as environmental complexity, stress, and health may play a role in cognitive aging. His other areas of research include mental health in older adults, and the consequences of cognitive and mental health in terms of everyday activities and health behaviors. In recent work, Dr. Crowe has been conducting research on the association between factors related to health disparities (e.g., diabetes, educational factors, health literacy) and cognitive function in older adulthood.



**Juliet Davis, PhD**  
Associate Professor  
Division of Healthcare Management  
Florida A&M University  
[juliet.davis@famu.edu](mailto:juliet.davis@famu.edu)

**HD RTP 2008**

**Dr. Davis'** research interests include exploring strategic business plans for innovations in residential care facilities, such as relationships of nursing home administrator's entrepreneurial cognitions to facility financial performance, comparing hospice and non-hospice quality of care and service utilization patterns in nursing homes by ownership status, and other health care management areas of research.

## 2007-2017 DEEP SOUTH RCMAR SCHOLAR DIRECTORY



**Catherine Dawson, PhD**  
Occupational Therapist  
Bullock County Hospital  
Director, Bullock County Hospital Home  
Health Agency  
[cdawson@ustconline.net](mailto:cdawson@ustconline.net)

**HDRTP 2010**

In addition to her clinical work as an OT at Bullock County Hospital, **Dr. Dawson** previously taught courses at Tuskegee University in the Occupational Therapy Master's program, as well as general health sciences courses, such as Medical Vocabulary and Introduction to Health Care Systems.



**Laura Dreer, PhD**  
Director, Psychological & Neuropsychology  
Clinical Research Services  
Associate Professor  
UAB Department of Psychology  
[dreer@uab.edu](mailto:dreer@uab.edu)

**Pilot Grant 2008**

**Dr. Dreer's** areas of clinical research concentration are threefold: (1) examining the role of social cognitive (e.g., problem-solving abilities) and lifestyle factors on adjustment to chronic health conditions, (2) development of health promotion and lifestyle interventions to improve health outcomes and adjustment, and (3) evaluating competency-related issues (i.e., medical decision-making, management of finances, driving). She holds secondary appointments in the departments of physical medicine and rehabilitation, neurology, and psychology.



**Raegan Durant, MD, MPH**  
Associate Professor  
Division of Preventive Medicine  
UAB School of Medicine  
[rdurant@uab.edu](mailto:rdurant@uab.edu)

**Pilot Grant 2007**

**Dr. Durant's** research interests: Hospital use among minority patients with heart failure; Incorporation of community health works in chronic disease management for heart failure; Developing strategies to increase minority participation in clinical trials.

## 2007-2017 DEEP SOUTH RCMAR SCHOLAR DIRECTORY



**Yvonne D. Eaves, PhD, RN**  
Director of the WellStar School of Nursing  
Thomas M. & Elizabeth D. Holder Endowed  
Chair of Nursing, and Associate Professor  
Kennesaw State University  
[yeaves@kennesaw.edu](mailto:yeaves@kennesaw.edu)

**Pilot Grant 2007  
HDRTP 2008**

**Dr. Eaves** earned the PhD in nursing from the University of Michigan, with an emphasis on Gerontology; the MS in community Health Nursing from Northern Illinois University; the Bachelor of Science in Nursing from Saint Xavier University in Chicago; and a diploma in nursing from Saint Francis Hospital School of Nursing in Peoria, Illinois. Dr. Eaves previously held positions as Assistant Professor at the Schools of Nursing at the University of North Carolina at Chapel Hill, and most recently at the University of Alabama at Birmingham (UAB). Dr. Eaves is devoted to being a champion for the care of older adults and is excited about the opportunity to contribute to the mission of the WellStar School of Nursing, especially in the area of health disparities research and education. She was selected as the Director and Holder Endowed Chair in July 2017.



**Yohannes Endeshaw, MD, MPH**  
Professor & Chief of Geriatrics  
Morehouse School of Medicine  
[yendeshaw@msm.edu](mailto:yendeshaw@msm.edu)

**Pilot Grant 2014**

**Dr. Endeshaw's** research interests include racial and socioeconomic disparities related to sleep complaints and adverse health outcomes.



**Kathleen Foley, PhD**  
Associate Professor and  
Research Coordinator  
School of Occupational Therapy  
Brenau University  
[kfoley@brenau.edu](mailto:kfoley@brenau.edu)

**HDRTP 2010  
Pilot Grant 2011**

In scholarly activity, **Dr. Foley** is focused on maximizing occupational performance in older adults and the development of inter-professional health care teams. She has received intramural grant funding to investigate toileting disparities among older Black residents in skilled nursing facilities.



## 2007-2017 DEEP SOUTH RCMAR SCHOLAR DIRECTORY



**Cassandra Ford, PhD, MSN, MBA, RN, FAHA**  
Assistant Professor  
College of Nursing  
University of Alabama  
[ford039@ua.edu](mailto:ford039@ua.edu)

**HD RTP 2009  
Diversity  
Supplement 2010**

**Dr. Ford's** primary research interest is cardiovascular disease in rural, southern African American women focusing on older adults as well as health disparities in rural populations.



**Ricardo Franco, MD**  
Assistant Professor  
UAB Division of Infectious Diseases  
[rfranco@uab.edu](mailto:rfranco@uab.edu)

**HD RTP 2014  
Pilot Grant 2014**

**Dr. Franco** is board certified in Internal Medicine and Infectious Diseases and Assistant Professor of Medicine at the University of Alabama at Birmingham. His interest focuses on interventions to improve access to care and new therapies in Chronic Hepatitis C; clinical management and trials in HCV mono-infection and HIV-HCV co-infection; and the accelerated pathogenesis of HIV-HCV co-infection. Recently, Dr. Franco had coordinated the Hep C Circle of Care award, instrumental in the expansion of the 1917 Viral Hepatitis Clinic. Since then, the 1917 Viral Hepatitis Clinic had developed collaborations with the Liver Center, the Department of Emergency Medicine and Charity Care at UAB, becoming a major point of linkage to Hepatitis C care for a broad referral base in the State of Alabama.



**Charnetta Gadling-Cole, PhD, MSW**  
Interim Chair and Director  
Alabama A&M University  
[charnetta.cole@aamu.edu](mailto:charnetta.cole@aamu.edu)

**HD RTP 2011**

**Dr. Gadling-Cole's** research areas include evidence based practices, HIV/AIDS, gerontology/geriatrics, international social work and racial disparities.



**Stephanie Garrett, MD, CHPE, FACP**  
Assistant Professor  
Geriatrics Division  
Department of Medicine  
Emory University School of Medicine  
[stephanie.lynn.garrett@emory.edu](mailto:stephanie.lynn.garrett@emory.edu)

**Pilot Grant 2010  
HD RTP 2011  
Diversity  
Supplement 2012**

**Dr. Garrett's** research interests: Clinical research in culturally sensitive cognition assessment in older African Americans.

## 2007-2017 DEEP SOUTH RCMAR SCHOLAR DIRECTORY



**Burel Goodin, PhD**  
Assistant Professor  
UAB Department of Psychology  
[bgoodin1@uab.edu](mailto:bgoodin1@uab.edu)

**Pilot Grant 2013**

**Dr. Goodin** is a clinical health psychologist with specialization in pain-related behavioral medicine. He examines the interactions of psychosocial and biobehavioral characteristics in relation to the experience of pain through the key pathways of stress-related hormones (neuroendocrine function) and immune function. His previous and ongoing projects are conducted in collaboration with colleagues at the Johns Hopkins School of Medicine, the University of Florida, as well as UAB. Over the years, Dr. Goodin has been involved with several different studies that afforded him the opportunity to become very familiar with experimental models of evoked pain using quantitative sensory testing. As part of these studies, he has developed and refined methods to assess pain sensitivity and modulation (e.g., endogenous pain inhibition and facilitation) using dynamic experimental pain stimuli. This has led him to the next step in his research, which is to begin evaluating the impact of factors such as sleep disturbance and neuropeptides (e.g., oxytocin) on pain sensitivity and modulation across the adult lifespan.



**Stephen Gray, MD**  
Assistant Professor  
UAB Department of Surgery  
[shgray@uab.edu](mailto:shgray@uab.edu)

**Diversity  
Supplement 2014  
Pilot Grant 2015**

**Dr. Gray's** research interests include functional assessment in liver transplant patients utilizing the Life-Space assessment.



**Anne Halli-Tierney, MD**  
Assistant Professor  
UA Department of Family Medicine  
College of Community Health Sciences  
[halli002@ua.edu](mailto:halli002@ua.edu)

**Pilot Grant 2016  
HDRTP 2016**

**Dr. Halli-Tierney** is an assistant professor in the department of family medicine at The University of Alabama's College of Community Health Sciences. She works with medical education at levels of learning from undergraduate to post graduate students, and focuses on interdisciplinary models of education. Her research interests include interdisciplinary educational models and their effects on students' learning, the impacts of interdisciplinary health care models on older adults' wellbeing and quality of life, and the quality of care provided in interdisciplinary settings.



## 2007-2017 DEEP SOUTH RCMAR SCHOLAR DIRECTORY



**Lonnie Hannon III, PhD**  
Associate Professor of Sociology  
Tuskegee University  
[lhannon@mytu.tuskegee.edu](mailto:lhannon@mytu.tuskegee.edu)

**Diversity  
Supplement 2010  
HDRTP 2011**

**Dr. Hannon** completed his graduate work at the University of Alabama at Birmingham. His dissertation focused on neighborhood and socioeconomic factors influencing urban migration among African Americans. Dr. Hannon's study of socioeconomic factors and life quality has evolved into a theoretical approach that uses macroeconomic transitions and structural inequality as root factors associated with health disparities, neighborhood disadvantage, and economic stagnation. As a significant component of his personal mission, Dr. Hannon believes that student development and service to the community is critically important to the future of the United States. Dr. Hannon regularly teaches Urban Society, Statistics, and Introduction to Sociology. He ensures that each student receives the care and personal development needed to function at the highest level. He also serves as a mentor to students and neighborhood youth with the goal of helping them achieve their most positive selves.



**Charlie Harris, PhD**  
Assistant Professor  
Department of Psychology  
Clayton University  
[CharlieHarris@clayton.edu](mailto:CharlieHarris@clayton.edu)

**HDRTP 2009**

**Dr. Harris'** primary research interest is in examining psychosocial and cultural factors that influence body image perceptions and weight management in African-American women, both pertaining to themselves and their children. A secondary interest is to develop innovative delivery models for weight loss counseling such as the use of E-counseling for overweight and obese women.

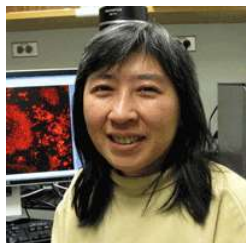


**Yvonne Hipps, PhD, MSW**  
Chief Executive Officer  
Generations Connected Inc.

**HDRTP 2009  
HDRTP Pilot  
Grant 2010**

Through **Dr. Hipps'** non-profit Generations Connected, Inc., a health and wellness intergenerational program for youth, seniors and families, Dr. Hipps works with a senior community medical clinic with several locations in the greater Atlanta area. They reach out to those who support loved ones in their homes with a diagnosis of cognitive impairment - depression, dementia and Alzheimer's disease. Dr. Charlie Harris, another RCMAR scholar (see above), serves with the coalition. Dr. Hipps retired from MSM in 2013.

## 2007-2017 DEEP SOUTH RCMAR SCHOLAR DIRECTORY



**Hui-Chen Hsu, PhD**  
Associate Professor of Medicine  
UAB School of Medicine  
[rheu078@uab.edu](mailto:rheu078@uab.edu)

**Pilot Grant 2007**

**Dr. Hsu's** research interests: Further understanding of the novel mechanisms of up-regulation of type I IFN by pDCs around autoantibody-producing germinal centres, and the development and delivery of autoantigens by MZ-P B cells is being analysed to develop novel therapies for treatment of systemic lupus erythematosus. They are developing new lupus mouse models to study the safety and efficacy of using an anti-human DR5 antibody (TRA-8) as novel therapy of lupus and other autoimmune diseases. The ongoing project is to test the method of action and effectiveness of TRA-8 in depleting inflammatory cells to determine its potential utility as a therapy for patients with autoimmune and inflammatory diseases.



**Li Huang, PhD**  
Assistant Professor  
Departments of Psychology & Sociology  
Tuskegee University  
[huangl@mytu.tuskegee.edu](mailto:huangl@mytu.tuskegee.edu)

**HD RTP 2015  
Pilot Grant 2016**

**Dr. Li Huang** received her PhD from Auburn University. She finished her post-doc training at the University of South Carolina. Her training and research mainly focus in the area of human development and family area of developmental psychology. Her current research focuses on the etiology of problem behaviors among immigrant and minority youth, academic achievement and retention rate for under representative minority students.



**Allison Jones, MS, PhD**  
Assistant Professor  
Acute, Chronic & Continuing Care  
UAB School of Nursing  
[arjones3@uab.edu](mailto:arjones3@uab.edu)

**HD RTP 2016**

**Dr. Jones** is an Assistant Professor in the Acute, Chronic & Continuing Care Department at the UAB School of Nursing where she teaches in the Undergraduate nursing program. She earned her BSN, MSN, and PhD from the University of Kentucky. She has a background in emergency and trauma nursing with a broader focus on critical care. Dr. Jones is also a Certified Clinical Nurse Specialist in the Adult Acute Care field. Her research focuses on outcomes related to transfusion of stored blood components, including the blood collection, preservation, and utilization processes, and how those issues impact patient outcomes. She is interested in exploring transfusion practices and outcome disparities in patients with major trauma.

## 2007-2017 DEEP SOUTH RCMAR SCHOLAR DIRECTORY



**Lynn (Jones) Benson, PhD**  
Assistant Professor  
Psychology & Sociology  
Tuskegee University  
[jonesg@mytu.tuskegee.edu](mailto:jonesg@mytu.tuskegee.edu)

**HD RTP 2014**

**Dr. Benson** earned her degrees, Bachelor of Science in Sociology and Master of Education in Counseling from Tuskegee University. She earned the Doctor of Philosophy degree in Counseling from Clark Atlanta University. Dr. Jones has over twenty years of experience in higher education. She has international experience in Malawi and Uganda, in teaching and in assisting on various public health projects. Research Interests include Adolescent Violent Behavior, HIV Testing Amongst College Students at HBCUs, HIV Prevention and Education, Mental Health in Mbale, Uganda.



**Richard Kennedy, PhD**  
Assistant Professor  
UAB Division of Geriatrics, Gerontology,  
Palliative Care  
[rekenned@uab.edu](mailto:rekenned@uab.edu)

**Pilot Grant 2012**

**Dr. Kennedy's** interests are in the statistical modeling of microarray data (particularly using multivariate or mixed effects models), quality control in microarray data, statistical computing, and linear models. He is particularly interested in the unique aspects of applying microarray technologies and analysis to the area of neuroscience



**Giyeon Kim, PhD**  
Associate Professor  
Alabama Research Institute on Aging  
Department of Psychology  
University of Alabama  
[Giyeon.Kim@ua.edu](mailto:Giyeon.Kim@ua.edu)

**HD RTP 2010  
Pilot Grant 2011**

**Dr. Kim** is a gerontologist whose research focuses primarily on racial and ethnic disparities in mental health and mental health service use among older adults. Dr. Kim has been involved in several projects relating to mental health disparities and has extensive experience with various racial and ethnic groups, including non-Hispanic Whites, African Americans, Latinos (Mexican Americans and Cuban Americans), Asians (Chinese, Japanese, Filipinos, Vietnamese and Koreans), and American Indians/Alaska Natives (AIANs). Dr. Kim's work has been supported by grants examining (1) barriers and facilitators to mental health service use among racially/ethnically diverse older adults and (2) the role of geography in racial disparities in mental health service use among older adults. Dr. Kim also conducts research on measurement equivalence of mental health screening tools across diverse cultural groups. Her work on racial/ethnic disparities and measurement equivalence has been published in prestigious peer-reviewed journals such as *Journal of the American Geriatrics Society*, *American Journal of Geriatric Psychiatry*, *The Gerontologist*, and *Journal of Psychiatric Research*.

Dr. Kim was awarded the 2017 Margaret M. and Paul B Baltes Award by the Gerontological Society of America. She took a new position with the Chung-Ang University in South Korea, and moved to Seoul in the summer of 2017.

## 2007-2017 DEEP SOUTH RCMAR SCHOLAR DIRECTORY



**Loretta Lee, PhD, CRNP, FNP-BNC**  
Assistant Professor  
UAB School of Nursing  
[llee@uab.edu](mailto:llee@uab.edu)

**HDRTP 2013  
HDRTP Pilot Grant  
2015**

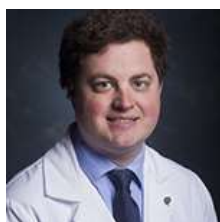
**Dr. Lee** has a special interest in health disparities and chronic conditions in African-American men. Diabetes is a chronic condition with complications that affect African-American men disproportionately compared to their counterparts. Given her special interest she has developed a program of research that is focused on the Effect of Social Support and Intuitive Eating Practices on Diabetes Self-Care Management in African-American men.



**Junfei Lu, PhD**  
Assistant Professor  
Department of Educational Studies  
University of Alabama  
[junfei1982@gmail.com](mailto:junfei1982@gmail.com)

**HDRTP 2017  
Pilot Grant 2017**

**Dr. Lu** obtained his PhD in Rehabilitation Counselor Education Program from the University of Iowa. He is currently an Assistant Professor at the rehabilitation counseling program in the department of Educational Studies in Psychology, Research, Methodology, and Counseling, University of Alabama, where he teaches online courses in group counseling, career counseling, multicultural counseling, etc. His primary research interests are in the area of resilience, particularly as that relates to spirituality and mindfulness. He also conducts research in counseling identity and competence development and attitudes toward people with disabilities.



**Michael J. Lyerly, MD**  
Assistant Professor  
Director, Birmingham VAMC Stroke Center, and  
UAB Vascular Neurology Fellowship Program  
Department of Neurology  
University of Alabama at Birmingham  
[mlyerly@uabmc.edu](mailto:mlyerly@uabmc.edu)

**HDRTP 2017**

**Dr. Lyerly** is an associate professor in the Department of Neurology, Division of Cerebrovascular Diseases at UAB. His research interests focus on disparities in access to stroke care, stroke systems of care and health outcomes research among Veterans with stroke. He currently is the Director of the Primary Stroke Center at the Birmingham VA and also works with the national VA Telestroke Program to improve access to stroke care for rural veterans.

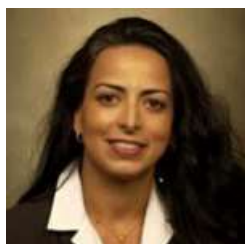
## 2007-2017 DEEP SOUTH RCMAR SCHOLAR DIRECTORY



**Kimberly Martin, PhD**  
Assistant Professor  
UAB Epidemiology  
[martinkd@uab.edu](mailto:martinkd@uab.edu)

**HD RTP 2015**

**Dr. Martin** is an Assistant Professor in the School of Public Health at the University of Alabama at Birmingham. She graduated from New York University in 2004, and then received her Doctor of Philosophy in Chronic Disease Epidemiology at Yale University in 2009. Her dissertation investigated racial differences in the eligibility for and receipt of carotid endarterectomy in a large national sample of elderly ischemic stroke patients. Dr. Martin completed her postdoctoral training at Johns Hopkins University School of Medicine in 2013, focusing on the patient-provider relationship among minorities and other vulnerable populations.



**Shadi Martin, PhD**  
Associate Professor  
McGill School of Social Work in Montreal  
[shadi.martin@mcgill.ca](mailto:shadi.martin@mcgill.ca)

**Pilot Grant 2009**

Before joining McGill University, **Dr. Martin** was an associate professor of social work at the University of Alabama where she taught for over 10 years. Dr. Martin holds a PhD in Social Work from the University of Utah (2004) as well as a Masters in Social Work (2001). Her research focuses on health disparities among culturally/ethnically diverse populations, specifically the influence of culture on health care seeking behaviors of older Middle Eastern immigrants and African Americans. Dr. Martin has an extensive experience in international social work, including the World Health Organization (WHO) in Europe and the United Nations High Commissioner for Refugees (UNHCR) in the Middle East. She has received numerous awards and recognition for her work throughout her career including Fulbright Fellowship, MIT Dissertation Award, and the Hartford Faculty Scholar Award.



**Gina M. McCaskill, PhD, MSW, MPA**  
Adjunct Instructor  
UAB Gerontology, Geriatrics & Palliative Care  
[gina.mccaskill@va.gov](mailto:gina.mccaskill@va.gov)

**HD RTP 2015  
Pilot Grant 2016**

**Dr. McCaskill** is a social worker and a junior researcher in Gerontology and Geriatrics. She completed her doctoral education at The University of Alabama with minor coursework in Gerontology at the University of Alabama at Birmingham (UAB). She is a Southern Regional Education Board Doctoral Scholar and a John A. Hartford Dissertation and Pre-dissertation Fellow. She has a voluntary faculty appointment in the UAB School of Medicine as an Adjunct Instructor, Department of Medicine, Division of Gerontology, Geriatrics, and Palliative Care, and has an affiliation with the UAB Comprehensive Center for Healthy Aging. Dr. McCaskill is a VA Fellow in Advanced Geriatrics, Birmingham/Atlanta Geriatric Research, Education, and Clinical Center, and a John A. Hartford VA Scholar in Social Work at the Birmingham VA Medical Center, Birmingham, Alabama. Her research agenda is in the area of physical activity among older veterans with chronic conditions. She is currently conducting a qualitative study about facilitators and barriers to physical activity among older veterans. She practices social work in the Geriatric Assessment Clinic at the Birmingham VA Medical Center.



## 2007-2017 DEEP SOUTH RCMAR SCHOLAR DIRECTORY



**Ian McDonough, PhD**  
Assistant Professor, Psychology  
College of Arts & Sciences  
University of Alabama  
[immcdonough@ua.edu](mailto:immcdonough@ua.edu)

**HD RTP 2016**

**Dr. McDonough** is currently an Assistant Professor in the Psychology Department at the University of Alabama and is an Associate of the Alabama Research Institute on Aging. Dr. McDonough received his BS from UCLA in 2006, his PhD from the University of Chicago in 2011, and did his postdoc at the Center for Vital Longevity at the University of Texas at Dallas until 2015. He recently received the Matilda White Riley Early Stage Investigator Honors from the National Institute of Health and was accepted into the highly competitive Butler-Williams Scholars Program at the National Institute on Aging. Dr. McDonough's current research focuses on the neural correlates of memory retrieval and how they differ with old age. More recently, he has also begun to investigate how the neural correlates differ in middle-aged and older adults at risk for Alzheimer's disease, with a particular focus on racial/ethnic health disparities.



**Mercy Mumba, PhD**  
Assistant Professor  
Capstone College of Nursing  
University of Alabama  
[mnmumba@ua.edu](mailto:mnmumba@ua.edu)

**HD RTP 2017**

**Dr. Mercy Mumba** is an Assistant Professor at the University of Alabama Capstone College of Nursing. She graduated with her Honors Bachelor of Science in Nursing from the University of Texas at Arlington College of Nursing and Health Innovation in 2010. She received her Medical Surgical certification from the Medical Surgical Nursing Certification Board in 2013. In 2016, Dr. Mumba graduated with her PhD in Nursing with a concentration in education and research.

Dr. Mumba has an extensive clinical background, both in acute care and long-term care. She has assumed many leadership and administrative roles both in the clinical setting and academia. Her experience in academia includes lecture experiences and clinical supervision of students. Her academic areas of expertise include holistic health assessment, fundamentals of nursing, and nursing research. Dr. Mumba has won several notable awards, including the Rising Star Award from [Nurses.Com](http://Nurses.Com) in their Giving Excellence Meaning awards. She is a recipient of many scholarships and fellowships from the University of Texas at Arlington, Texas Health Resources, and Sigma Theta Tau International. Dr. Mumba has further received many leadership and mentoring awards, including the Deans Mentoring Award from the University of Texas at Arlington.

Dr. Mumba is an innovative researcher who is well versed in both qualitative and quantitative research methodologies. Her primary research area of focus is substance abuse among nurses and their psychosocial wellbeing. Her other research interest include self-efficacy and functional status in older adults and how these relate to healthy aging and wellness.



## 2007-2017 DEEP SOUTH RCMAR SCHOLAR DIRECTORY



**Philip F. Musa, PhD, PE, MPH**  
Associate Professor of Management and  
Information Systems  
Director of Management Programs  
UAB Collat School of Business  
[musa@uab.edu](mailto:musa@uab.edu)

**HDRTP 2009**

Reflective of his educational background, **Dr. Philip Musa's** research interests intersect electrical engineering, business/information systems, and public health. His curiosity in Information and Communications Technologies for Development has coxswained his interests to health disparities and developing countries. Dr. Musa has published dozens of research in academic journals such as Journal of Information Technology for Development, Journal of Medical Systems, European Journal of Information Systems, Communications of AIS, Communications of ACM, Journal of Information Technology Management, Journal of Information Systems Education, Electronic Journal of Information Systems in Developing Countries, etc. He is currently conducting research on Health Information Systems and Outcomes for Chronic Diseases in Sub-Saharan Africa.



**Hyunjin Noh, PhD, MSW**  
Assistant Professor  
School of Social Work  
University of Alabama  
[hnoh1@sw.ua.edu](mailto:hnoh1@sw.ua.edu)

**HDRTP 2013  
Pilot Grant 2015**

**Dr. Noh's** areas of interest and expertise: Aging and healthcare service utilization, end-of-life care, minority groups' use of hospice care, health disparity, and qualitative methods.



**JoAnn Oliver, PhD, RN**  
Associate Professor  
Capstone College of Nursing  
University of Alabama  
[joliver@ua.edu](mailto:joliver@ua.edu)

**Pilot Grant 2012**

**Dr. Oliver** began teaching at the Capstone College of Nursing in January of 2002. She has taught in both the undergraduate and graduate nursing programs. Dr. Oliver is a Certified Nurse Educator. She earned her Ph.D. at Georgia State University. While attending Georgia State University, she received the Sigma Theta Tau Epsilon Alpha Chapter Research Committee Award and the Promise of Nursing for Georgia Regional Faculty Fellowship. Dr. Oliver completed a one-year post-doctoral Health Disparities Research Training Program at the University of Alabama at Birmingham. Dr. Oliver has received federal funding to complete her research, which focuses on cancer screening, cancer health disparities, and decision-making. She has numerous publications and presents at local, state, national, and international levels.

## 2007-2017 DEEP SOUTH RCMAR SCHOLAR DIRECTORY



**William Opoku-Agyeman, PhD, MPH, MS**  
Assistant Professor  
UAB Department of Health Services Administration  
University of Alabama at Birmingham  
[wilbian@uab.edu](mailto:wilbian@uab.edu)

**HD RTP 2017**

**Dr. Opoku-Agyeman** is currently an Assistant Professor with the Department of Health Services Administration at the University of Alabama. His research interest includes; an aspect of financial management in healthcare, and strategies specifically about the supply chain, hospital purchasing alliance, Information technology exchanges across healthcare systems, hospital's population management and location of health care organizations as a function of strategy. William holds a Master's of Science Degree in Geographic Information Science from the University of Akron, Ohio, and Masters in Public Health from Kent State University in Ohio. He also graduated from the Kwame Nkrumah University of Science and Technology with a Bachelor of Science Degree in Natural Resource Management in Ghana, West Africa.



**Maria Pisu, PhD**  
Assistant Professor  
UAB Division of Preventive Medicine  
[mpisu@uab.edu](mailto:mpisu@uab.edu)

**Pilot Grant 2011**

**Dr. Pisu's** research interests: Disparities in access to care, Geographic variation in treatment, Economic burden of disease, Cancer survivorship, Economic evaluation.



**Eric Plaisance, PhD**  
Assistant Professor  
UAB Department of Human Studies  
[plaissep@uab.edu](mailto:plaissep@uab.edu)

**Pilot Grant 2014**

**Dr. Plaisance** is an Associate Scientist in the UAB Nutrition Obesity Research Center (NORC). His research interests include Adaptive thermogenesis, Nutrient sensing, Lipid metabolism, High intensity resistance and Interval exercise.

## 2007-2017 DEEP SOUTH RCMAR SCHOLAR DIRECTORY



**Sola Aina-Popoola, PhD, MS**  
Assistant Professor  
School of Nursing  
Tuskegee University  
[spopoola@mytu.tuskegee.edu](mailto:spopoola@mytu.tuskegee.edu)

**HD RTP 2016**

**Dr. Popoola** is a Registered Nurse with a Master Degree in Nursing (Auburn University) and presently a PhD candidate at Auburn University College of Education. She has been a clinical nurse for 22 years and a Nurse Faculty for six years. She was selected as Holmes Scholar, 2016. She has three publications out of which two were peer-reviewed articles in both international and national journals. Presently, Ms. Popoola collaborates with other Health care professionals in self-management training education for Adult Diabetes Type 2 clients living in black belt counties of Alabama and working with two others colleges in promoting healthy management around Alabama.



**Haiyan Qu, PhD, MHSA**  
Research Assistant Professor  
UAB School of Health Professions  
[hyqu@uab.edu](mailto:hyqu@uab.edu)

**HD RTP 2012**

**Dr. Qu** is an investigator and methodologist for several research projects that are being conducted to address environmental and behavioral factors affecting multi-stakeholders' treatment decision-making. Dr. Qu's research interests include patient-centered outcomes research, health disparities, rehabilitation care, quality of care, medication adherence, and shared decision-making.



**Nicole Redmond, MD, PhD, MPH**  
Medical Officer  
National Heart, Lung, and Blood Institute (NHLBI)  
Div of Cardiovascular Sciences (DCVS), Clinical  
Applications and Prevention Branch (CAPB)  
[Nicole.Redmond@nih.gov](mailto:Nicole.Redmond@nih.gov)

**HD RTP 2012**

**Dr. Redmond's** research interests include racial and ethnic health disparities in cardiometabolic diseases, health communication and health behaviour, and community based primary care for criminal justice populations. Prior to joining NHLBI, Dr. Redmond was Assistant Professor with UAB Division of Preventive Medicine. See her website: [www.drnicoleredmond.com](http://www.drnicoleredmond.com)

## 2007-2017 DEEP SOUTH RCMAR SCHOLAR DIRECTORY



**Nicole Ruggiano, PhD, MSW**  
Associate Professor  
Associate, Alabama Research Institute on Aging (ARIA)  
John A. Hartford Geriatric Social Work Scholar  
School of Social Work  
The University of Alabama  
[nruggiano@ua.edu](mailto:nruggiano@ua.edu)

**HD RTP 2017**

**Dr. Nicole Ruggiano** is an Associate Professor within the School of Social Work at the University of Alabama, in Tuscaloosa. She has earned a PhD in Urban Affairs and Public Policy from the University of Delaware and an MSW (Social Work) from Temple University. Dr. Ruggiano's research focuses on decision making and management of health and support services for older adults with chronic conditions. Currently, her work aims to develop and test mobile information technologies that are culturally and regionally sensitive and support family caregivers of adults with dementia. She is particularly interested in developing technology-based interventions that support caregivers in rural communities and for those who are racial and ethnic minorities. Dr. Ruggiano has also conducted research on health self-management among older adults with chronic conditions.



**Kara Sands, MD**  
Assistant Professor  
UAB Division of Neurology  
[ksands@uab.edu](mailto:ksands@uab.edu)

**HD RTP 2014**

**Dr. Sands'** research interests include acute ischemic stroke treatments (thrombolysis), secondary stroke prevention (antiplatelets and anticoagulants), and quality improvement in stroke care. Dr. Sands is now in Arizona.



**Kendra Sheppard, MD, MSPH**  
Assistant Professor  
UAB Division of Geriatrics, Gerontology, Palliative Care  
Staff Physician, Birmingham Veterans Affairs Medical Center  
[ksheppard@uab.edu](mailto:ksheppard@uab.edu)

**Diversity Supplement  
2011  
HD RTP 2012**

**Dr. Sheppard's** research interests include teaching interprofessional education and developing interprofessional practice across health care settings, particularly in long term care; improving transitional care of nursing home residents within the healthcare system; and integrating the topic of health disparities/inequities for medical and/or interprofessional trainees within the healthcare system, particularly outpatient practice.

## 2007-2017 DEEP SOUTH RCMAR SCHOLAR DIRECTORY



**Gaynell Simpson, PhD, MSW**  
Assistant Professor  
University of Alabama  
[gmsimpson@sw.ua.edu](mailto:gmsimpson@sw.ua.edu)

**HDRTP 2013**

**Dr. Simpson's** areas of interest and expertise: Minority aging and health disparities; chronic health conditions and caregiving; caregiving demands and health outcomes; identification of risk and protective factors associated with women's health.



**Irena Stepanikova, PhD**  
Associate Professor  
UAB Sociology  
[irena@uab.edu](mailto:irena@uab.edu)

**HDRTP 2015**

**Dr. Stepanikova** is a sociologist specializing in health disparities. In her research, she applies socio-psychological theories to better understand mechanisms and processes underlying inequality in health. She also studies the process of health care, and how physician-patient communication and trust contribute to disparities. She has experience using a variety of methodologies, including qualitative approaches (focus groups, in-depth interviews), experiments, and large population-based surveys.



**Benjamin Taylor, MD, MPH**  
Associate Professor  
Senior Vice President for Clinical Effectiveness  
Associate Chief Medical Officer  
Director, Program in Clinical Effectiveness,  
UAB Health System  
[bbtaylor@uab.edu](mailto:bbtaylor@uab.edu)

**Pilot Grant 2009**

**Dr. Taylor** is Associate Professor and Senior Vice President for Clinical Effectiveness, and Associate Chief Medical Officer, as well as Director, Program in Clinical Effectiveness, with the UAB Health System.

## 2007-2017 DEEP SOUTH RCMAR SCHOLAR DIRECTORY



**Kristen Triebel, PhD**  
Assistant Professor of Neurology  
Training Director  
UAB Division of Neuropsychology  
[ktriebel@uab.edu](mailto:ktriebel@uab.edu)

**Pilot Grant 2009**

**Dr. Triebel** is a clinician scientist investigating cognitive and functional change in patients with neurological disorders. She is funded by the American Cancer Society, NIH, and other private organizations. Her research focuses on decisional capacity, cognition, and everyday functioning of patients with a variety of neurological disorders including cancer, traumatic brain injury, mild cognitive impairment, and Parkinson's disease. Dr. Triebel is also a co-investigator of studies examining financial and medical decision making in healthy older adults and in patients with mild cognitive impairment and Alzheimer's disease.



**Yasemin Turkman, PhD, MPH, MS, MEd, MA**  
Assistant Professor  
School of Nursing  
The University of Alabama at Birmingham  
[yturkman@uab.edu](mailto:yturkman@uab.edu)

**HD RTP 2017**

**Dr. Turkman** is an assistant professor at the UAB School of Nursing where she teaches in her clinical specialty, psychiatric mental health nursing. Dr. Turkman's research interests are in health disparities in palliative care and psychosocial oncology. She is currently pursuing research in the access and use of palliative care by older African Americans in the Deep South. Previously, Dr. Turkman examined the experiences and psychosocial needs of women diagnosed with triple negative breast cancer, a subtype that disproportionately affects African American and young women. Her research has been funded by the American Cancer Society, Susan G. Komen for the Cure Disparities Program, and the American Association of Colleges of Nursing/Johnson & Johnson.



## 2007-2017 DEEP SOUTH RCMAR SCHOLAR DIRECTORY



**Theresa Wadas, PhD, DNP, MS**  
Assistant Professor  
Capstone College of Nursing  
University of Alabama  
[twadas@ua.edu](mailto:twadas@ua.edu)

**HDRTP 2017**

**Dr. Wadas** is an assistant professor at the University of Alabama Capstone College of Nursing. She received her PhD in nursing from the University of Arizona and her DNP from the University of Southern Indiana. Dr. Wadas is board certified as a family and acute care nurse practitioner and a fellow in the American Association of Nurse Practitioners. Her research trajectory focuses on health disparities in three main areas: cellular aging, cardiovascular disease, and psychosocial mechanisms associated with stress physiology among minority and/or underserved populations.

Dr. Wadas' research goals are to:

1. To develop methods that measure and model complexities of physiological and psychosocial relationship systems as it pertains to cellular aging and cardiovascular disease.
2. To use such models to understand the intersection of cellular aging and physiological and the psychosocial context of individuals and families at risk for developing and/or advancing cardiovascular disease.
3. To translate these findings into effective individual, family, and/or community interventions among minority and/or underserved populations.



**David E. Vance, PhD, MGS**  
Professor, UAB School of Nursing  
[devance@uab.edu](mailto:devance@uab.edu)

**Pilot Grant 2013**

In 2001, **Dr. Vance** realized that highly active antiretroviral therapy was changing the demographic profile of HIV. Now, we are witnessing this change with the graying of the epidemic. In fact, by 2015 half of those with HIV will be 50 and older. Sadly, many older adults with HIV express a cognitive frailty phenotype that interferes with everyday functioning, quality of life, and healthcare. Although he publishes across disciplines, he focuses primarily in nursing since nurses are on the frontline in providing health care to these adults.



**Martinique Perkins Waters, PhD**  
Assistant Professor, Department of Psychology  
University of West Alabama  
Adjunct Faculty, Department of Psychology  
Department of African American Studies  
UAB College of Arts and Sciences  
[mperki2@uab.edu](mailto:mperki2@uab.edu)  
[mwaters@uwa.edu](mailto:mwaters@uwa.edu)

**HDRTP 2011  
HDRTP Pilot Grant  
2012**

**Dr. Waters** is interested in improving the mental and physical well-being of older adults, especially those from underserved populations. Additionally she wants to understand family caregivers, quality of life indicators, long-term health trajectories, and mortality. She began work at the University of West Alabama in 2017.

## 2007-2017 DEEP SOUTH RCMAR SCHOLAR DIRECTORY



**Connie White-Williams**, PhD, RN, FAAN  
Director of UAB Hospital Center for Nursing  
Excellence  
Assistant Professor, UAB School of Nursing  
[cwwilli@uab.edu](mailto:cwwilli@uab.edu)

**HDRTP 2011**

**Dr. White-Williams** is a leader in evidence-based practices and is respected for her transformational leadership and passion for nursing excellence. She is involved with several professional organizations, including the American Heart Association, the International Society of Heart and Lung Transplantation and the American Association of Heart Failure Nurses. Dr. White-Williams interests include monitoring clinical outcomes in heart-failure patients.



**Larrell Wilkinson**, PhD, MSPH, CHES  
Assistant Professor  
UAB Community Health and Health Services  
[larrellw@uab.edu](mailto:larrellw@uab.edu)

**HDRTP 2014**

**Dr. Wilkinson's** primary research interest focuses on the reduction or elimination of health disparities through community engaged research. This work includes gaining a better understanding of the individual, contextual, and behavioural factors associated with disease or disease risk and the design and implementation of interventions to address these factors. Specifically, his research emphasizes promoting active living, stress management, and healthy eating. Ongoing funded research focuses on the prevention of cardio-metabolic disease (conditions) and improving behavioural health.



**Nicole Wright**, PhD, MPH  
Assistant Professor  
UAB Department of Epidemiology  
[ncwright@uab.edu](mailto:ncwright@uab.edu)

**Pilot Grant 2015**

**Dr. Wright** is an assistant professor in the Department of Epidemiology at the University of Alabama at Birmingham (UAB). She earned her Doctorate and MPH from the University of Arizona. Her research interests include outcomes and effectiveness research in musculoskeletal diseases, particularly osteoporosis. She has worked on several NIH and non-NIH funded studies, including intervention projects aimed to improving osteoporosis knowledge and patient activation, research examining racial differences in osteoporosis outcomes, and validation projects of administrative claim-based algorithms of outcomes related to osteoporosis medication. Dr. Wright has received numerous awards and is published in prominent journals in her field including, *The Journal of Bone and Mineral Research*, *Osteoporosis International*, *The Journal of Rheumatology* and *Calcified Tissue International*.