



Children's  
of Alabama



## CENTER FOR PALLIATIVE AND SUPPORTIVE CARE



### ORGANIZATIONAL CHART

#### AFFILIATED CENTERS

- INTEGRATIVE CENTER FOR AGING RESEARCH
- CENTER FOR OUTCOMES AND EFFECTIVENESS RESEARCH & EDUCATION
- CENTER FOR AIDS RESEARCH
- COMPREHENSIVE CANCER CENTER
- CENTER FOR NURSING RESEARCH
- MINORITY HEALTH RESEARCH CENTER
- CENTER FOR EXERCISE MEDICINE

#### STEERING TEAM

DIRECTOR  
ASSOCIATE DIRECTORS

ADMINISTRATIVE DIRECTOR  
REGIONAL DIRECTOR  
ASSISTANT DIRECTORS

GGPC DIVISION DIRECTOR

RODNEY TUCKER, MD, MMM  
MARIE BAKITAS, DNSC, CPRN  
RONIT ELK, PHD  
MICHAEL BARNETT, MD, MS  
JENNIFER HICKS, MSHA, MBA  
ARAS ACEMGIL, MBA  
ASHLEY NICHOLS, MD  
STEPHEN HOWELL, DNP  
SYLVIA HUANG, PHD  
SUSAN MCCAMMON, MD  
NICK DIONNE-ODOM, PHD  
KEN BOOCKVAR, MD, EX OFFICIO

COMMUNITY ADVISORY  
BOARD & CENTER LIAISONS

SE INSTITUTE FOR  
INNOVATION IN PALLIATIVE &  
SUPPORTIVE CARE AT UAB

ALABAMA COMPREHENSIVE  
CANCER CONTROL  
COALITION

ALABAMA DEPARTMENT OF  
PUBLIC HEALTH

#### CLINICAL WORKGROUP NICHOLS & HOWELL

##### *VA PALLIATIVE CARE CLINICAL PROGRAMS*

- SAFE HARBOR UNIT
- INPATIENT CONSULTATION
- AMBULATORY CLINIC

##### *COA CLINICAL PROGRAMS*

- INPATIENT CONSULTATION
- MUSC DYS CLINIC
- NEURO-ONCOLOGY CLINIC

##### *UAB PALLIATIVE CARE CLINICAL PROGRAMS*

- PCCU
- INPATIENT CONSULTATION
- SUPPORTIVE CARE & SURVIVORSHIP CLINIC
- CAREGIVER & BEREAVEMENT SUPPORT SERVICES
- PSYCHOLOGY & COUNSELING SERVICES
- CAPE

#### RESEARCH WORKGROUP BAKITAS & ELK

##### *PALLIATIVE CARE RESEARCH PRIORITIES*

- INCREASING ACCESS TO PALLIATIVE AND SUPPORTIVE CARE IN RURAL & UNDER RESOURCED POPULATIONS
- ADDRESSING CULTURE, LIVED EXPERIENCES AND RACISM; TOWARDS HEALTH EQUITY
- SYMPTOM SCIENCE
- IMPROVING CAREGIVER SUPPORT & BEREAVEMENT CARE
- ENHANCING COMMUNICATION SKILLS AMONG PATIENTS & PROVIDERS

GRECC RAND NCQA  
BEACON NPCRC

#### SIIPSC WORKGROUP ELK, BAKITAS & BARNETT

- INNOVATION SUMMIT
- CULTURAL TRAINING
- NETWORKING PLATFORMS
- SPECIALIZED TRAINING AND WEBINARS

#### EDUCATION WORKGROUP BARNETT & HUANG

##### *FELLOWSHIP COMMITTEE BARNETT*

- PALLIATIVE CARE LEADERSHIP CENTER (PCLC)
- UAB CLINICAL TRAINING ACADEMY (CTA)
- PALLIATIVE CARE SUBSPECIALTY
- NURSE PRACTITIONER PROGRAM
- PSYCHOLOGY & COUNSELING TRAINING PROGRAM

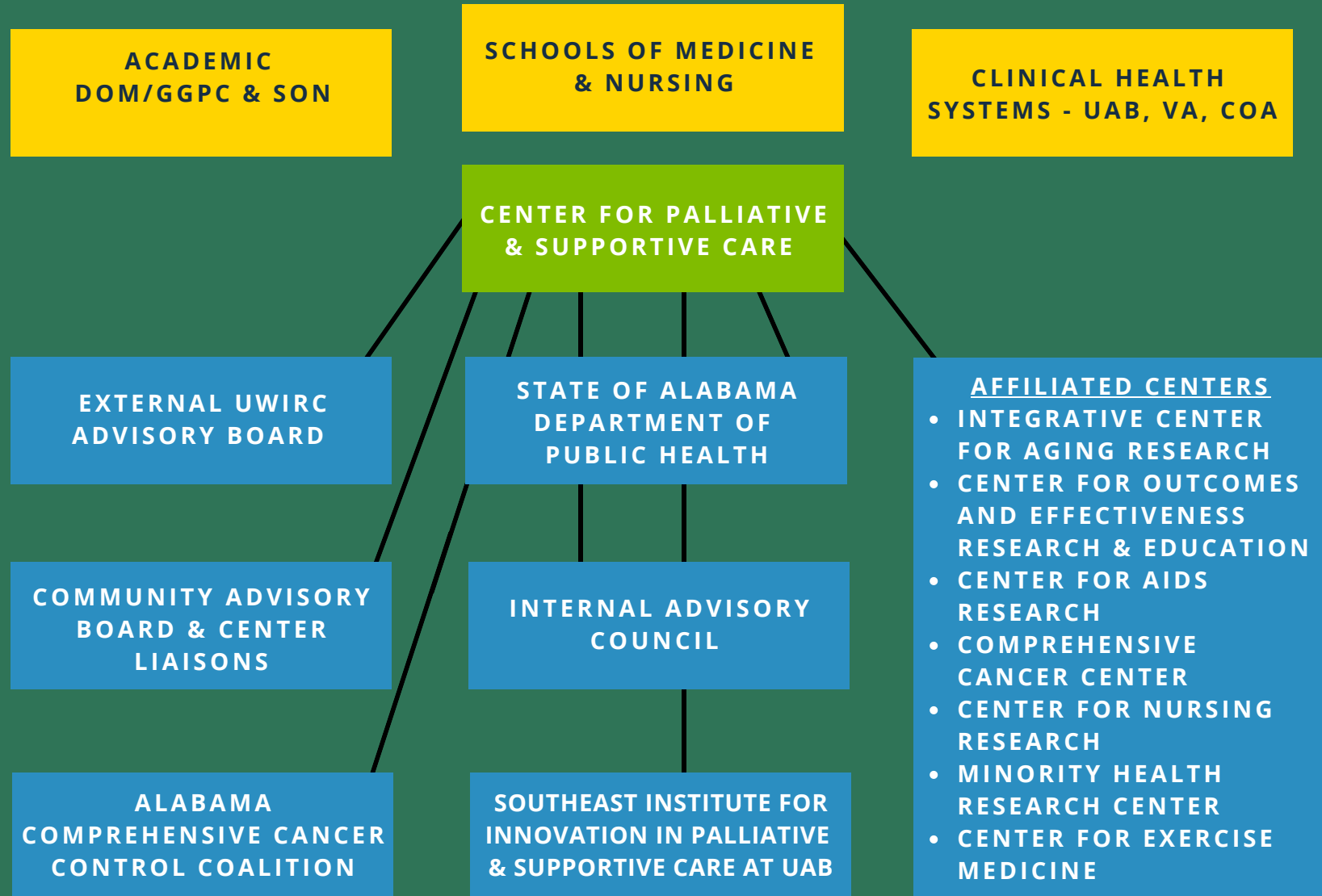
#### COMMUNICATION & ENGAGEMENT TUCKER & ACEMGIL

- DEVELOPMENT
- WEBSITE & SOCIAL MEDIA PLATFORMS
- PCLC/CTA MARKETING
- COMMUNITY ADVISORY BOARD
- COMMUNITY ORGANIZATIONS
- FAITH COMMUNITIES
- PAYOR PARTNERSHIPS
- CENTER NEWSLETTERS



## CENTER FOR PALLIATIVE AND SUPPORTIVE CARE

### RELATIONAL STRUCTURE





## CENTER FOR PALLIATIVE AND SUPPORTIVE CARE

### ADMINISTRATIVE STRUCTURE EXECUTIVE COMMITTEE & STEERING TEAM

