



## Message from the Chair

### Inside this issue:

Faculty Profile	2
Accolades	3
Spotlight on Administration	4
Pathology Publications	4
From the Chief Residents	5
From the Grad Students	6-7
From the Postdocs/Visiting Scientists	8
Where are They Now?	9
Pathology Grants Awarded	9
Funds Solicitation	10-11



The UAB Department of Pathology recently established a Community Practice Pathology Program

(CPPP) to provide on-site professional pathology service to community-based hospitals. Our first contract, which began on October 1, 2013, is with the Baptist Health System in Montgomery. Baptist Health System includes three hospitals (Baptist South, Baptist East, and Prattville Baptist) and the Montgomery Cancer Center.

Our departmental efforts have been spearheaded by Drs. Gene Siegal and John Smith

who have been instrumental in establishing a close, mutually supportive relationship with Baptist Health Physicians, staff, and administrative leadership. Our "on-site" team of Pathology faculty members currently includes two new hires, Drs. Sam Borak and Kelley Taylor, and we are in the process of recruiting additional faculty and pathology assistants who will join us in 2014. Mr. Don Bowen and the departmental administrative staff have provided excellent support and guidance throughout the development of the CPPP and we could not have gotten off to such a great start without their dedication and commitment to this program.

Rather than attempting to name everyone who has contributed to our initial success, I'd simply like to say "thank you" to all of the faculty and staff who have taken on this new venture with enthusiasm and professionalism. The work is far from over and we will undoubtedly have setbacks and new issues to address as we expand the CPPP to other sites. However, based on our initial experience with Baptist Health, I am more convinced than ever that the CPPP will benefit the Department of Pathology, UAB Health System and importantly, patients throughout Alabama.

Best wishes,  
Kevin A. Roth, M.D., Ph.D.

## Dr. Robert Brissie

### Pathology In Focus Editorial Committee

Editor-in-Chief:

C. Bruce Alexander, M.D.

R. Pat Bucy, M.D., Ph.D.

Rakesh Patel, Ph.D.

Walter C. Bell, M.D.

William Benjamin, M.D.

Majd Zayzafoon, M.D., Ph.D.

Angie Schmeckebier

Dept. of Pathology Website:  
[www.path.uab.edu](http://www.path.uab.edu)

Newsletter E-Mail:  
[pathinfofocus@uab.edu](mailto:pathinfofocus@uab.edu)



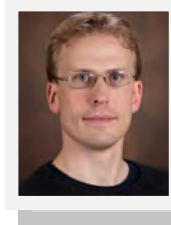
We are sad to announce that Dr. Robert Brissie, Forensic Pathology Division Director, died on Saturday, November 9, 2013. Dr. Brissie was an outstanding UAB faculty member

and a national leader in Forensic Pathology. He served as a UAB Department of Pathology faculty member and Chief Coroner/Medical Examiner for Jefferson County for over thirty years.

Visitation will be held from 11:00 a.m.-1:00 p.m., Thursday, November 14, 2013 at Ridout's Southern Heritage Funeral Home, Pelham, AL, with the 1:00 p.m. Celebration of Bob's Life immediately following in Southern Heritage Chapel, Pelham, AL.

For additional information, please go to the link at al.com: [http://blog.al.com/tuscaloosa/2013/11/jefferson\\_county\\_medical\\_exam.html](http://blog.al.com/tuscaloosa/2013/11/jefferson_county_medical_exam.html).

## Faculty Profile: Adam Wendt, Ph.D.



Dr. Adam R. Wendt is a new addition to the Department of Pathology, beginning his independent career as an Assistant Professor in the Division of Molecular & Cellular Pathology. Dr. Wendt completed his Ph.D. in Molecular and Cellular Biology in the laboratory of Dr. Daniel P. Kelly at Washington University in St. Louis. His thesis studies focused on regulation of gene expression by the transcriptional coactivator PGC-1 $\alpha$ , related to mitochondrial substrate switching in the heart and skeletal muscle in response to exercise training and models of hypertension. He expanded his interests in the regulation of cardiac mitochondrial number and capacity while completing postdoctoral studies with Dr. E. Dale Abel at the University of Utah. During his time in Utah, Adam was awarded a postdoctoral fellowship from the American Heart Association to study the role of glucose uptake into the heart during exercise and hypertension. He also took this time to explore various signaling pathways related to the regulation of metabolism in the diabetic heart, which lead to Adam being awarded an Advanced Postdoctoral Fellowship from the JDRF and subsequently a Pathway to Independence K99 from the NIH focusing on glucotoxicity

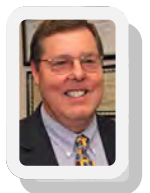
and glycemic memory. Adam's research from his graduate and postdoctoral training has resulted in more than 25 peer-reviewed publications. In 2012, he was appointed Instructor in the Department of Medicine at the University of Utah and as of this August he joined us here at UAB.

The research in Adam's laboratory, which continues to be funded by the JDRF and NIH, is focused on regulation of mitochondria in striated muscle with a particular emphasis on glucose-mediated regulation of molecular function. Through the use of transgenic and diabetic animal models the overall goal of this work is to define novel molecular pathways for future translational intervention for diabetic complications of the heart. By combining his interests in transcriptional biology and cellular signaling, Adam plans to define the mechanism by which fluctuations in blood sugar levels acutely regulate molecular function via post-translational O-GlcNAcylation of proteins, as well as by long-lasting epigenetic regulation of chromatin structure and gene expression in a process termed glycemic memory. In addition to his research activities, Adam had an active role in the training of numerous undergraduate and graduate students while in Utah. Building on of his undergraduate liberal arts education at Knox College he strives to create a training environment as strong as his research program. He routinely

reviews articles for a number of journals including Diabetes and looks forward to making contributions to the CCVS, CFRB, and UCDC as well as numerous other centers on campus that complement his work on the mitochondria in the diabetic heart.

While not in the lab Adam enjoys spending time with his wife Sandra and partner of 17 years and their two daughters (4 and 7). The family enjoys the outdoors, hiking as a family or cheering each other on at road races and marathons.

## Accolades:



Dr. Peter Anderson has been selected for a Fulbright Specialists project. Created in 2000 to complement the

Fulbright Scholar Program, the program enables faculty from the United States to support faculty development and institutional planning at academic institutions around the world.



Dr. Margaret Brandwein-Gensler was Awarded Tenure during the 2013 Promotion & Tenure Cycle.



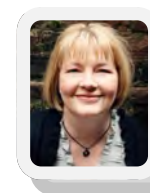
Dr. Yi-Ping Li received a 7.0 Percentile for his R01 grant application entitled "Inhibiting Periodontitis by Targeting Cathepsin K and Attenuating TLR Signaling". The application is first assigned to NIDCR.



Dr. Yabing Chen was elected as a permanent member of the Vascular Cell and Molecular Biology Study Section [VCMB] as of July 2013.



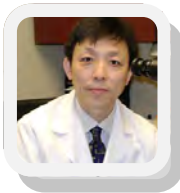
Dr. Lalita Shevde-Samant has been elected a permanent member of the NCI Chemodietary study section (through 2019).



Dr. Shannon Bailey was featured in UAB's The Mix for her research entitled "Alcohol Damages Liver by Throwing Off Circadian Clocks". To listen to the podcast on The Mix (UAB's Research Blog), go to the [mixuab.blogspot.com](http://mixuab.blogspot.com).



Dr. Zdenek Hel received a travel fellowship to visit KwaZulu-Natal Research Inst for Tuberculosis and HIV (I-RITH) at Durban, South Africa. He has also been appointed to the NIH AIP study section as an ad hoc reviewer.



Dr. Shi Wei was Promoted to Associate Professor and Awarded Tenure during the 2013 Promotion & Tenure Cycle.

## UAB Employee of the Month: Angela Kidd



Some people are born with the gift to quietly organize the activities around them, to keep tasks on track

and make life run more smoothly for others.

Angela Kidd, an office associate II with the Division of Informatics in the Department of Pathology, is one of those people. Colleagues describe Kidd as dedicated, team-focused and able to anticipate the needs of her co-workers — often before they realize the

needs themselves.

She expertly handles grant paperwork, assists faculty with appointments, travel reimbursements, ordering supplies and preparing various forms, reports and documents and ensures everything is in place for regular weekly workshops. Those are just a few reasons Kidd has been selected Employee of the Month for September.

"I've always tried to be efficient and organized; I'm just detail-oriented," said Kidd, who is shocked and appreciative to be honored. "It takes organizational skills to be a

great team player and help when you are needed."

Kidd has worked in the informatics division since its creation. The division uses computer research tools to identify the causes of diseases, advance medicine and enhance personalized patient care.

"Any official problem that we face, our first contact is Angela — and most often, the problem disappears," said Malay Basu, Ph.D., assistant professor of pathology informatics. "She is like a magician, working behind the scenes and taking care of the whole division. In my

Cont'd...

## UAB Employee of the Month: Angela Kidd

whole career, I have come across very few people as efficient and hardworking as Angela. She is simply outstanding in her job. We would be lost without her."

Basu especially appreciates the way Angela instinctively knows what co-workers need to do their best work. "If I have a seminar scheduled, she blocks time in my calendar every day for one week for preparation," Basu said. "This she does on her own. This is just an example of how devoted she is in her work."

Others agree.

"In my working experience, I have not witnessed this level of selflessness and commitment to one's job," said Egiebade Iriabho, a system administrator

in the division. "Angela is a joy to be around, and she is very focused. Our faculty, students, researchers and post-docs regard her contribution to the division as invaluable."

After two years in her position, Kidd is considered the most indispensable person in the division, colleagues say.

"We wouldn't know left from right without her," said Jonas Almeida, Ph.D., professor and division director.

Kidd joined UAB as an office associate in Pathology's Division of Laboratory Medicine in February 2003. Gina Heaton, an administrative supervisor for Pathology's divisions of Informatics and Laboratory Medicine, worked with Kidd from the beginning.

"She has always been very conscientious about the quality of her work and following departmental and university policies," Heaton said. "Angela is hardworking, dependable, dedicated and a very valuable employee. She has exceeded our expectations in carrying out her duties, faculty are thrilled with her work and she gets along great with all the research staff."

To Kidd, putting others first is just the right thing to do.

"Teamwork strengthens the department," Kidd explains. "It makes UAB and the department successful. It seems as though I learn something new every day in this department. We have six divisions, and we all work together. You can't get bored around here."

## Pathology Faculty Publications:

**Dr. Balu Chacko** received 'Most cited paper in 2012' award from the Biochemical Journal-Knowledge Environment Energy for our manuscript 'Prevention of diabetic nephropathy in Ins2+/-AkitaJ mice by the mitochondria-targeted therapy MitoQ. Chacko BK, Reily C, Srivastava A, Johnson MS, Ye Y, Ulasova E, Agarwal A, Zinn KR, Murphy MP, Kalyanaraman B, Darley-Usmar V. *Biochem J.* 2010;432 (1):9-19.

**Dr. Yabing Chen** had a recent publication in *Clinic Cancer research* on the novel function of PARP1 in regulating pancreatic cancer resistance to TRAIL therapy. This paper has set up the foundation for our grant application on "Death Receptor Signals in Pancreatic Cancer:

Mechanisms and Therapeutic targets", which is just funded by a VA Merit Review grant (4 years). Yuan K, Sun Y, Zhou T, McDonald J, Chen Y. PARP-1 regulates resistance of pancreatic cancer to TRAIL therapy. *Clin Cancer Res.* 2013 Sep 1;19 (17):4750-9

**Dr. Zdenek Hel** co-authored a manuscript that has been accepted to *PLOS Pathogens*.

**Dr. Jianhua Zhang** has three manuscripts in press. Dodson M, Liang Q, Johnson M, Redmann M, Fineberg N, Darley-Usmar V, Zhang J (2013) Inhibition of glycolysis attenuates 4-hydroxynonenal-dependent autophagy and exacerbates apoptosis in differentiated SH-SY5Y neuroblastoma cells. *Autophagy* in press.

Benavides GA, Liang Q, Dodson M, Darley-Usmar V, Zhang J (2013) Inhibition of autophagy and glycolysis by nitric oxide during hypoxia-reoxygenation impairs cellular bioenergetics and promotes cell death in primary neurons. *Free Radical Biology and Medicine*. In press.

Crabtree D, Dodson M, Ouyang X, Boyer-Guittaut M, Liang Q, Ballestas M, Fineberg N, Zhang J (2013) Overexpression of an inactive mutant cathepsin D increases endogenous alpha-synuclein and cathepsin B activity in SH-SY5Y cells. *Journal of Neurochemistry*, in press.

**Dr. Bruce Alexander** has had a manuscript accepted by the Archives of Pathology and Laboratory Medicine entitled "The Pathology Milestones and the Next Accreditation System."

## From the Chief Residents:

Congratulations to our residents for having such productive and successful meetings! We continue to uphold the UAB tradition of academic excellence. Fall recruitment has begun and we hope to bring in yet another year of great residents!

*Taylor Deal and Ben Hill*  
Chief Residents, 2013-2014

### Congratulations!

#### National Meetings, Presentations, and Awards

#### National Association of Medical Examiners

**Matt Cain**, Brissie RM, Almeida JS, Robinson CA, Davis GG. "Computer extraction of data from autopsy and toxicology reports" and "Creation of a queriable toxicology database available to forensic pathologists" Presented by Matt Cain to the National Association of Medical Examiners, Milwaukee, 2013. (interrelated presentations by received John Smialek **Best Resident Paper (presentation) Award**)

#### College of American Pathologists

**Jessie Xu**, Isayeva T, Brandwein-Gensler M, P16 Overexpression: A Better Prognostic Discriminator than Transcriptionally Active HPV16. **First Place Junior Member Abstracts Award**

**Jessie Xu**, Reddy V, and Peker D, Posttransplant Lymphoproliferative Disorder Occuring in a Heart Allograft. College of

American Pathologists Annual Meeting 2013 (poster).

**Deyin Xing**, Zhiyong Ren, Elizabeth Kerr, Leo Novak, Michael Conner. Müllerian adenosarcoma arising from endometrium and endometriosis: a case series study from single institution.

**Deyin Xing**, Zhiyong Ren, Leo Novak, Michael Conner. Multilocular peritoneal inclusion cyst: a cases report.

**Deyin Xing**, Jason Brazelton, Kenneth Fallon. Amebic encephalitis caused by *Balamuthia mandrillaris* in an immunocompetent patient.

**Taylor Deal**, Todd Stevens, Shuko Harada, Deniz Peker. CD20-negative B-cell lymphoma of the tongue: a rare case.

Additional CAP resident presenters include: **Yaolin Zhou**, **Brandi McCleskey**, **Jessica Tracht**, and **Jason Brazelton**

#### American Society of Dermatopathology

**Caitie Halverson**, Pavlidakey P, and Kris McKay. Squamoid (basal-like) breast carcinoma with p63 expression mimicking cutaneous carcinoma.

**Taylor Deal**, Kristopher McKay. Pleomorphic undifferentiated sarcoma mimicking atypical fibroxanthoma: a potential pitfall.

Additional ASDP resident presenters include: **Forest Huls**, **Vishwas Parekh**, **Abha Soni**, **Alex Wong**, and **Charlie Knapp**



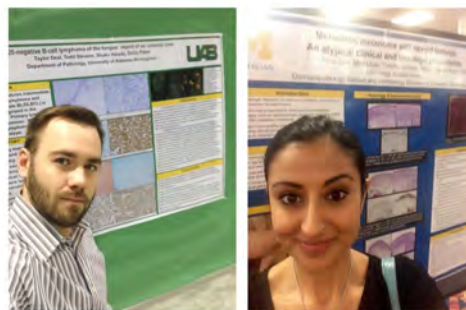
Second-year residents **Jessica Tracht** and **Brandi McCleskey** explore Universal Studios after their presentations at CAP in Orlando!

#### Residency Program Director:

C. Bruce Alexander, M.D.

#### Residency Program Support:

Karen Lewis  
934-4060  
[kflewis@uab.edu](mailto:kflewis@uab.edu)



Residents **Taylor Deal** and **Abha Soni** make due with selfies to document their presentations at the American Society of Dermatopathology



## From the Graduate Students:

### Accolades/Awards:

**Jack Heath**—First Place Winner, Best Poster Presentation, 24<sup>th</sup> Annual Vascular Biology and Hypertension Symposium, School of Medicine, UAB, September 23-24, 2013, entitled “Decreased Smooth Muscle O-GlcNAcylation Inhibits Diabetic Vascular Calcification”.

Jack was also selected for Best Basic Science poster presentation for poster entitled “Diabetic vascular calcification is inhibited by smooth muscle-specific OGT deletion and decreased O-GlcNAcylation.” -- American Heart Association Scientific Sessions, November 16-20, 2013, Dallas, TX

**Kimberly Dunham**—Received travel awards from the Center for Free Radical Biology and UAB Pathology Department for the Society for Free Radical Biology and Medicine Meeting in San Antonio, TX (20-24Nov). She has also been selected for an oral presentation at this meeting and was awarded a Travel Award from the Society. The title of her submission for SFRBM in November is “The Mitochondrial Genome Influences Body Composition, Energy Balance and Mitochondrial Bioenergetics in Mice”.

**Nathan Bowers**—a graduate student in Dr. Zdenek Hel’s laboratory has obtained a prestigious T32 training grant fellowship as part of the Immunology training program.

**Katherine Michel**—a graduate student in Dr. Zdenek Hel’s laboratory has obtained a prestigious T32 training grant fel-

lowship as part of the Basic Mechanisms of AIDS Pathogenesis training program.

**David Robbins**—The Seng-jaw Soong Award for Excellence in Biostatistics and Bioinformatics was established in 2008 by the family of Seng-jaw Soong, Ph.D. to honor his years of service to the Comprehensive Cancer Center. It is the hope of his family that this award will encourage young biostatisticians and bioinformaticians at UAB to pursue innovative research. The 2013 award winner is David Robbins, M.S. for his poster entitled, “TCGA Toolbox: An open web app framework for distributing big data analysis pipelines for cancer genomics. **David E. Robbins, M.S.**, Alexander Grunberg, B.S., Helena F. Deus, Ph.D., Murat M. Tanik, Ph.D. and Jonas S. Almeida, Ph.D.

### Publications/Presentations:

**Yanna Ding**—Published paper: Ding Y, Li J, Wu Q, Yang P, Luo B, Xie S, et al. IL-17RA is Essential for Optimal Localization of Follicular Th Cells in the Germinal Center Light Zone to Promote Autoantibody-Producing B Cells. *Journal of Immunology*. 2013;191(4):1614-24. Oral presentation on “IL-21 Inhibited Follicular Regulatory Th Cells to Promote Autoreactive Germinal Center Development in Autoimmune BXD2 Mice” at the 2013 American College of Rheumatology Annual Meeting in San Diego, CA on Oct. 25-30.

**Kimberly Dunham**—had a review article published in Free Radical Biology and Medicine

called “Mitochondrial genetics and obesity: evolutionary adaptation and contemporary disease susceptibility” Dunham-Snary KJ, Ballinger SW. *Free Radic Biol Med*. 2013 Sep 25;65C:1229-1237.

**Stephanie Wall**—Published the following review last month: Wall SB, Smith MR, Ricart K, Zhou F, Vayalil PK, Oh JY, and Landar A. “Detection of electrophile-sensitive proteins”. *Biochim Biophys Acta*. 2013 Sep 8. PMID: 24021887.

### Pathology Trainee Research Day:

**Betty Pritchett Spencer Travel Award** - Paul Daft, MCP Graduate Research Assistant

### Posters Presenter Winners:

Jason Brazelton, Resident  
Joo Hyoung Lee, Postdoctoral Fellow  
Seth Levy, MCP Graduate Student  
Saranya Ravi, GBS Graduate Student Trainee

### Oral presenter Winners:

Emily Libby, Graduate Assistant, Nutrition Sciences  
Rob Bone, MCP Graduate Research Assistant  
Jack Heath, MCP Graduate Student Trainee  
Nathan Bowers, GBS Graduate Student Trainee  
Caitlin Halverson, Resident  
Helen Collins, Postdoctoral Fellow

*From the Graduate Students Cont'd...*

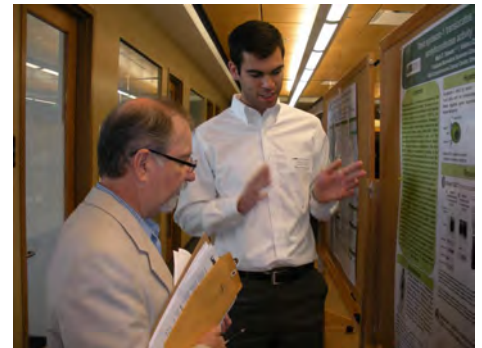
Photos from the Research Day:



Dr. Rakesh Patel



L to R: Jack Heath, Nathan Bowers, Dr. Kevin Roth, Helen Collins, Robert Bone, and Emily Libby



Dr. Victor Darley-USmar and Mark Stewart



Dr. Anurag Purushothaman, Hawley Pruitt, and Dr. Doug Hurst



David Robbins and Dr. Scott Isbell

## From Our Postdocs....

**Helen Collins**—A Postdoc Fellow in Dr. Chatham's laboratory has been accepted as a member to the Working Group on Cellular Biology of the Heart of the European Society of Cardiology

Received CCVC Featheringill Postdoctoral Fellowship , project title: " STIMulating stress: A novel role of ER Ca<sup>2+</sup> sensor STIM1 in the adult heart".

**Joel Jules**—A postdoctoral fellow in the laboratory of Dr. Yi-Ping Li, has been the awardee of the 2013 ASBMR (American Society for Bone and Mineral Research) Felix Bronner Young Investigator Award for the abstract presentation entitled "Conditional ablation of Cbfb in different stages of skeletogenesis results in a novel cleidocra-

Bronner, Professor Emeritus, BioStructure and Function at the University of Connecticut Health Center. This prestigious award is awarded to the highest ranking abstract submitted by a young investigator with a focus on bone and cartilage.

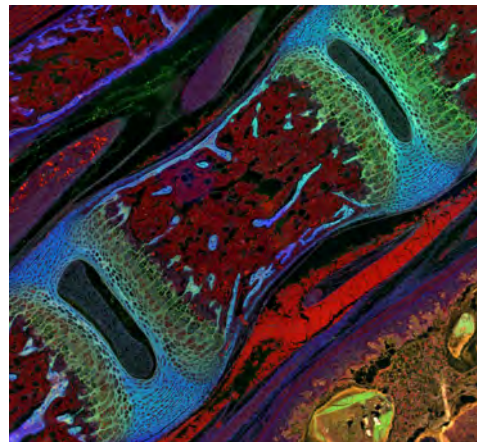
**Mengrui Wu**—A Visiting Scientist in the laboratory of Dr. Yi-Ping Li, received Travel Award at the 2013 annual meeting of the ASBMR.

**Guochun Zhu**—A Visiting Scientist in the laboratory of Dr. Yi-Ping Li, received Travel Award at the 2013 annual meeting of the ASBMR.

**Michael Nelson**—A postdoctoral Fellow in the laboratory of Dr. John Shacka, won 13th Place in the 2013 Small World Competition. Mike took this image while attending the HCS Immunohistochemistry Short Course this past March in Woods Hole (he was the recipient of a Travel award to attend). Mike just began his second year in Dr. John Shacka's lab as a UAB MERIT postdoctoral fellow. Dr. John Shacka also currently serves on the HCS Program Committee.



nial dysplasia mouse model revealing a new role of Cbfb in postnatal skeletal and tooth development" at the annual meeting of the ASBMR, which was held from 4th to 7th of October 2013 in Baltimore, MD. This award is sponsored by Dr. Mary Farach-Carson, the Vice Provost for Translational Bioscience & Ralph and Dorothy Looney Professor of Biochemistry and Cell Biology at Rice University, and was established in the honor of Dr. Felix





## Where are They Now?



**Leah Cook, Ph.D.**

Dr. Cook entered the Integrated Bio-medical Sciences Ph.D.

program in the Fall of 2007. After joining Danny Welch's lab in the department of Pathology, she entered the Molecular and Cellular Pathology graduate program the next year. For her dissertation research, she investigated and identified mechanisms of breast cancer metastasis suppression. She was able to present her work at national and local scientific meetings, was the recipient of the Betty Spencer Pritchett award for Excellence in Cancer Research, and published two first author articles. During her time in the MCP graduate program, what she cherished the most was the sense of community among the students and

faculty. She specifically remembers the annual barbecue and the student-faculty kickball game being a highlight; her favorite was seeing Drs. Tom Clemens and Ralph Sanderson, let loose and show off their kickball skills. Dr. Cook graduated in December 2011, and joined Conor C. Lynch's lab at the H. Lee Moffitt Cancer Center in Tampa, FL. Dr. Lynch joined the Moffitt Cancer Center after several successful years of training under Lynn Matrisian, one of the pioneers in identifying roles of matrix metalloproteinases in cancer metastasis. In the Lynch lab, Dr. Cook is currently partnering with members of the Moffitt Department of Integrated Mathematical Oncology to develop a computational model of prostate cancer to bone metastasis. With this model, they are currently investigating

the predictive potential their computational model for investigating putative therapeutic targets such as transforming growth factor beta (TGFβ). Dr. Cook was also recently awarded an American Cancer Society postdoctoral training fellowship, has had a first-author review paper accepted for publication and recently submitted a research article from her current project on which she is co-author. At Moffitt, Dr. Cook has served as Vice Chair and Chair of the Moffitt Postdoctoral Association, working with their Associate Center Director (ACD) and ACD of Education and Training to make sure the needs of postdoctoral fellows at Moffitt are being met. She is also working with the current chair of the MPDA to plan and host the first annual Moffitt Junior Scientist Retreat. She'd like to continue doing bone metastasis research as an academic scientist.

If anyone has any news items, accolades, etc. to be put in the quarterly newsletter, please send it to the Path In Focus e-mail address at: [pathinfocus@uab.edu](mailto:pathinfocus@uab.edu).

Thank you.

Angie Schmeckebier

## Pathology Grants Awarded:

**BRUCE ALEXANDER (Consultant)**

NIH/NHLBI  
*"Therapeutic Targeting of the Myofibroblast in Fibrotic Lung Disease"*  
 \$8,695,080 10/1/13—7/31/14

**STEVEN CARROLL**

NIH  
*"Evaluating the Role of NRG-1 Receptors in MNST Tumorigenesis"*  
 \$98,637 07/01/13-06/30/16

**JOHN CHATHAM**

UNCf-Merck  
*"The Role of O-Linked-Beta-N-Acetyl-Glucosamine Protein Modification"*  
 \$92,000 09/01/13-08/31/15

**ANDRA FROST**

**DoD**

*"Microvascularized 3D Breast Cancer Constructs for Drug Testing and Development"*  
 \$272,973 09/30/13-09/29/16

**AIMEE LANDAR**

UAB/CCTS  
*"Bioenergetic and Mitochondrial Dysfunction in Bipolar Disorder"*  
 \$60,000 08/15/13-08/14/14

**ROBIN LORENZ**

NIH/NHLBI  
*"Short Term Training in Health Professional Schools"*  
 \$767,285 07/17/13-04/30/18

**JOSEPH MESSINA**

VA-IPA  
*"Tatyana Gavrikova"*  
 \$114,948 08/01/13-07/31/15

**RAKESH PATEL**

NIH  
*"Nitrite Dependent Protection Against C12 Gas Toxicity Role of Chlorinated Lipids"*  
 \$3,692,767 09/18/13-06/30/18

**RALPH SANDERSON**

Sigma Tau  
*"Pre-Clinical Investigation of SST0001 in Multiple Myeloma Models"*  
 \$280,000 10/01/12-09/30/14

**KEN WAITES**

AstraZeneca UK Limited  
*"Performing Antibiotic Susceptibility Assays for AstraZeneca Investigational Compound Against Human Mycoplasmas and Ureaplasmas"*  
 \$735,047 08/02/13-07/31/16

Dear UAB Department of Pathology Friends and Colleagues:

The UAB Department of Pathology is recognized nationally for excellence in biomedical research, undergraduate and graduate medical education, and diagnostic pathology. This rise to prominence has been accomplished through the hard work and dedication of numerous Department of Pathology faculty and trainees who have made UAB a phenomenal environment for pathology education and clinical practice. Several decades ago, the former Departments of Anatomic Pathology and Clinical Pathology of the University of Alabama School of Medicine merged into a single Department of Pathology of the UAB Health System. More than 250 residents have received their graduate training in Pathology at UAB and have gone on to populate the state, region and the nation. In fact, the vast majority of Pathologists in the state of Alabama have received some or all of their training here at UAB. This program of excellence in graduate medical education has been appropriately balanced by a world-class graduate program that has similarly trained generations of scientists who fill academia, industry and government service. Our department has been bolstered in recent years by an ever increasing number of post-doctoral fellows, clinical fellows and junior faculty members who have achieved academic, research, and/or clinical excellence, and ascended to leadership positions at UAB or other institutions.

Please consider making a gift to the Department of Pathology at UAB to support our missions of clinical practice, teaching, research and service. Any amount would be most gratefully received and would be fully deductible\*. One could direct it to a particular area of need, to fund current and future endowed professorships or create new awards, prizes or similar recognition opportunities to honor yourself, a family member, a favorite professor, etc.

We would be pleased to assist you and your professional advisors in including the UAB Department of Pathology in your estate plan or in exploring other giving strategies. A simple tear off sheet is found below.

\* One should always check with their tax advisor.

Thank you for your serious consideration of this request.

-----  
Please fill out each of the 3 Sections:

A1—Enclosed, please find my contribution to the UAB Department of Pathology in the amount of:

\_\_\_ \$50  
\_\_\_ \$100  
\_\_\_ \$500  
\_\_\_ \$1000  
\_\_\_ Other: \_\_\_\_\_

Please make all checks payable to the UAB Department of Pathology and return them to Ms. Lynne Roden, Departmental Administrator, 500 22nd Street South; Suite JNWB 404, Birmingham, AL 35294-0500.

Cont'd...

A2—Please contact me to discuss further:

Name: \_\_\_\_\_

Address: \_\_\_\_\_

Telephone Number: \_\_\_\_\_

E-mail Address: \_\_\_\_\_

\*Please indicate your preferred means of communication.

B—I wish to direct this gift to the Department towards:

\_\_\_ Where the need is the greatest

\_\_\_ Teaching

\_\_\_ Research

\_\_\_ Named Chairs or Professorships

\_\_\_ Awards for teaching/research/clinical excellence

\_\_\_ Naming opportunities (Rooms, collections, equipment, etc.)

C—Person(s) and complete address to be acknowledged for tax purposes:

\_\_\_\_\_  
\_\_\_\_\_  
\_\_\_\_\_  
\_\_\_\_\_

Do you want this gift to be anonymous? Yes \_\_\_ No \_\_\_

Do you want to honor a particular person or event?

Specifics: \_\_\_\_\_

D—If you prefer to donate via credit card, please call the UAB Development office at (205) 975-5659.