

2019 - 2020

UAB Pediatric Emergency Medicine

Fellowship Program

Information Booklet





Welcome!

- We're very glad you're here! Thank you for your interest in our Fellowship Program.
- Throughout this booklet, we hope you'll find beneficial information that will help in your fellowship decision.
- If there is something you would like to know that is not included, please email or call us:

- Ann Klasner
aklasner@peds.uab.edu



- Terri Coco
tcoco@peds.uab.edu



- Brittany Appelboom
bappelboom@peds.uab.edu
205-638-6557
(Contact person)





***UAB Pediatric Emergency
Medicine 2018-2019***

Table of Contents

Welcome -----	1
Table of Contents -----	2
UAB Pediatrics by the Numbers -----	3
Birmingham by the Numbers -----	4
Where Fellows Live -----	5
Birmingham Attractions -----	6
Birmingham Websites -----	7-8
Fellows' Biographies -----	9-10
UAB Pediatric Emergency Medicine Fellowship Website -----	11
Schedule of Rotations -----	12
Conference Schedule -----	13
Conference Schedule Example -----	14
Other Fellowship Responsibilities/Activities -----	15
Pediatric Research Projects List -----	16
Alumni List -----	17-18
UAB Department of Pediatrics Faculty -----	19-20
Policies and Procedures -----	21
Initial Resident Agreement -----	22
Salary and Benefits -----	23
Benefits Overview -----	24
Fellows' List of Favorite Things -----	25



UAB Pediatrics by the Numbers

73,403	—	Number of Visits to Emergency Medicine in 2018
15,614	—	Inpatient Admissions in 2018 (COA)
380	—	Licensed beds (COA)
48	—	NICU bassinets
258.91	—	Daily Average Census 2018 (COA)
241	—	Pediatric Medical Faculty Members
22	—	Pediatric Emergency Medicine Faculty Members
9	—	Pediatric Emergency Medicine Fellows
66	—	Pediatric House Staff
28	—	Scheduled Vacation Days
9	—	Consecutive years ranked among the nations best hospitals by U.S. News & World Report
16	—	Med/Peds House Staff
Top 20	—	Pediatric Departments in funding by NIH
760,000 sf	—	The largest single medical facility expansion project in the history of Alabama

***Birmingham by the Numbers***

2	—	Average annual snowfall in inches
23	—	Metro hospitals
15-20	—	Average number of minutes to commute to work
17	—	Public Golf Courses
23	—	State Parks
50+	—	Shopping Centers
62	—	Average temperature in degrees F
96	—	Antique malls and galleries
117	—	Days of precipitation
147	—	Miles from Birmingham to Atlanta, GA
192	—	Miles from Birmingham to Nashville
210	—	Miles from Birmingham to Destin, FL (The Beach)
500+	—	Restaurants
820	—	Median rent for 2 bedroom apartment



Where Fellows Live





Birmingham Attractions

- SEC Headquarters
- Civil Rights Institute
- DeSoto Caverns
- Oak Mountain State Park
- Barber Motorsports Park
- Workplay Music Theater
- Alabama Sports Hall of Fame
- Birmingham Museum of Art
- McWane Center
- IMAX Theater
- Old Car Heaven
- Birmingham Zoo & Botanical Gardens
- Pepper Place Farmers Market
- Sidewalk Moving Picture Festival
- Birmingham Business Alliance
- Greater Birmingham Convention & Visitors Bureau
- Regions Field (Birmingham Baseball Stadium)
- Iron City Music Venue and Grill
- Alabama Adventure
- Regions Tradition Golf Tournament
- Do Dah Day Festival
- Railroad Park
- Birmingham Barons Baseball Team-Chicago White Sox AA minor league affiliate
- Birmingham Broadway Series
- The Alabama Theater
- Stardome Comedy Club
- Vulcan - Roman mythical god of the forge (tallest cast iron statue in the world)
- Vulcan Aftertunes
- Verizon Wireless Music Center
- Rickwood Field - world's oldest ballpark
- Talladega Super Speedway



Birmingham Websites

<http://birminghamal.org/> - Website of Greater Birmingham Tourism & Conventions with links to area attractions, events and much more. Also has an app called INBirmingham

<http://www.thingstodoinbirminghamal.com/> - This website has everything to do in Birmingham on any given day.

<http://www.birmingham365.org/> - Everything there is to do in Birmingham including festivals, theatre, music, classes, and sports.

<http://www.alabamatheatre.com/> - Historic Alabama theatre where many performances and movies are shown throughout the year including *Rocky Horror Picture Show* Movie and Costume Party and several Holiday movies shown such as *It's a Wonderful Life* and *Miracle on 34th Street*.

<http://www.uab.edu/uabmagazine/> - UAB magazine, also has an app for your IPAD called UAB magazine

<http://www.uab.edu/medicine/magazine/> - UAB's School of Medicine, a magazine devoted to UAB research in the medical community.

www.artsbma.org - Birmingham Museum of Art- great events like Art on the Rocks and exhibitions including *Warhol and Cars* and *Who Shot Rock and Roll*.

www.bcri.org - Birmingham Civil Rights Institute

<http://www.workplay.com/> - Cool venue for several bands

<http://www.barbermuseum.org/> - Barber Vintage Motorsport Museum, home of the best motorcycle collection with over 1200 motorcycles and race cars on display.

<http://www.pepperplacemarket.com/> - Saturdays - Fresh fruits and vegetables market

<http://www.ironcitybham.com/> - Restaurant and music venue



Birmingham Websites

<http://alysstephens.uab.edu/> - Alys Stephens Performing Art Center with several performances throughout the year. This year's schedule included Anthony Bourdain, Mass Collective, Ledisi, Eric Benet, Martin Short, and the Alabama Orchestra Symphony.

<http://www.mcwane.org/> - McWane Science Center- local science museum with an IMAX theater offers several hands on activities and camps for children.

<http://www.alabamaballet.org/> - Alabama Ballet Company - local ballet with several performances throughout the year including *The Sleeping Beauty* and George Balanchine's *The Nutcracker*.

<http://railroadpark.org/> - Railroad Park, located on 1st Avenue South between 14th and 18th Streets, is venue that offers recreation and several activities.

www.barons.com Birmingham Barons, our minor league baseball team which is an AA affiliate of the Chicago White Sox.

www.bjcc.org Birmingham Jefferson Convention Complex holds several events and concerts including Jay-Z, Disney on Ice, Chris Tomlin, Birmingham Home and Garden Show, and America's Got Talent Live tour.

<http://www.southernmuseumofflight.org/> Southern Museum of Flight is one of the largest aviation museums in the Southeast, is dedicated to presenting civilian, military, and experimental aircraft and memorabilia from the earliest history of powered flight.

<http://ashof.org> Alabama Sports Hall of Fame and Museum holds over 5,000 sports artifacts

www.rickwood.com Rickwood Field is America's oldest ballpark. Portions of the movie '42', was filmed here.

www.visitvulcan.com Vulcan Park and Museum. Vulcan is the world's largest cast iron statute.



2019 Pediatric Emergency Medicine Fellows



Samuel Strachan, MD- I was born in Nassau, Bahamas and moved state side for undergrad in South Carolina when I was 17. After finishing undergrad in Columbia I migrated over to Birmingham for med school and have stayed here ever since. I met my wife Ashton, who is an NP at the UAB student health center, while in med school. Ashton and I love to spend our time traveling and experiencing new cultures. I'm really excited to start fellowship and finally be a PEM doc!

Erika Bishop, MD- I was born and raised in the small town of Greenwood, SC. I started playing soccer in my early years which afforded me the ability to do so at Wofford College. I stayed in state but traveled to the coast for medical school which I completed at the Medical University of South Carolina in Charleston. Then I ventured to the Ham for residency where I fell in love with the city, the pediatric program and its people. Despite initially being led astray in thinking I would sub-specialize in GI, I finally saw the light and converted to the good side (or dark depending on who you ask!).



Laura Rochford, MD- I grew up in northern Virginia. Since then I've lived in TN, NY and most recently OH. I'm very excited about moving to Birmingham! My family lives in Knoxville, TN and they are happy that I will be a true southerner again. In fact, they have informed me that now that I am half-way to Destin, they will be visiting me much more often. I've heard amazing things about COA and I share your passion for emergency medicine and taking care of sick kids. When I am not at work I am most happy on a mountain bike. I feel very lucky to get the opportunity to be a fellow at COA!

James Statler, MD- I was born in Oklahoma but raised in Georgia. Oldest of 4 siblings growing up in a mostly Spanish household. We all speak fluent Spanish thanks to my Columbian mom. Dad is Canadian, does not speak Spanish though. I played 4 years of collegiate baseball for Lagrange College in Georgia. I have 2 huskies: Nikko and Kirra (they do fine in warmer temperatures). I usually spend my free time out and exploring with them. Only TV I usually watch is Braves baseball, Falcon football, and Georgia football.



Ryan Roddy, MD- I'm an Alabama girl and I'm so excited to be coming back for fellowship! I took a pretty unusual route to become a PEM doctor which included performing musical theater professionally prior to medical school, and I have been known to break out into song and dance a time or two when the delirium hits on those overnight shifts. I spent the last three years in Little Rock for Residency. When I am not working my husband and I love spending time with our four rescue pups. We love to travel and are hoping to cross Alaska off our bucket list in the next year.

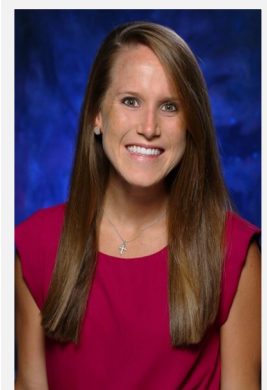
**2019 Pediatric Emergency Medicine Fellows** *cont'd*

Stephen Ruffenach, MD— I was born in New Jersey but moved to Arizona at a young age and grew up in Tucson, AZ. I moved to Phoenix, AZ for college at Arizona State, back to Tucson for Medical School and then right back to Phoenix for residency at Phoenix Children's Hospital. After spending so much time bouncing back and forth between cities in Arizona I am very excited about the prospect of a new adventure in Birmingham and a change in scenery! When I am not working I love playing/watching sports and on a night off I can usually be found at the movies or catching a concert.

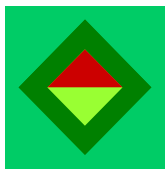


Eric Jorge, MD — I was born and raised near West Palm Beach, Florida and attended The University of Florida...Go Gators! I then moved to Orlando to do medical school at the University of Central Florida. I married my high-school sweetheart, Kelly who is a nurse and worked at UAB Highlands while I was in residency here. She is now a full-time mom and takes care of our sweet daughter Emma, who just turned 1 year old. In my free time, I love playing the guitar, wakeboarding, hiking with my two border collies, and playing soccer. I go to Homewood Church of Christ, and you can find me playing in the worship band there occasionally. am so excited and blessed to continue taking care of the kids of Alabama with such a stellar PEM family.

Emily Skoog, MD — I was born and raised in Texas and met my husband Hunter while attending Texas A&M University. We both loved Texas A&M so much we stayed for medical school. I stayed in Texas for pediatric residency and when Hunter graduated, he matched at UAB for ENT residency and we both fell in love with Birmingham. I am the oldest of 5 siblings and enjoy being involved in their lives whether its watching sporting events, band concerts or having family time. have completed many half marathons, triathlons and completed one full marathon and currently training for my second full marathon! We also love watching sports, mainly college football (Gig 'em Aggies!). I am so excited to be moving to Alabama this summer and cannot wait to become a part of the PEM family.



Alicia Webb, MD — My name is Alicia (pronounced "uh-LISH-uh," like "fish"). I was born and raised a Missouri Tigers fan, and I often joke that I knew the fight song before I could walk (M-I-ZI)! Though I was born in Stamford, CT, I am a true Midwesterner as I grew up in Edwardsville, IL (just east of St. Louis, MO). I cemented my lifelong love of all things black and gold while living in Columbia, MO, for eight years during college and medical school. I competed with the Mizzou Swim Club in college and the Mizzou Masters Swim Club in med school. After moving to Birmingham for residency, I co-captained our UAB Pediatrics kickball team, and I currently swim, run, bike, and combine all three by competing in triathlons. I also snow ski, water ski, hike, and generally try to be outside as much as possible.



Emergency Medicine Webpage



Emergency Medicine Fellowship



Eric Jorge, MD



Emily Skoog, MD



Alicia Webb MD

The Pediatric Emergency Medicine (PEM) fellowship program at the University of Alabama at Birmingham (UAB) began its thirty fifth year in 2019. Our PEM program was accredited through the American Board of Pediatrics in the fall of 1999. We were last accredited in 2011 and our next visit is set for 2022. Since 1995, we have been dedicated to educating our fellows based on a three year model.

The mission of our program is:

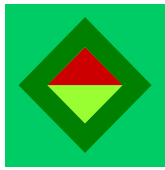
The mission of our pediatric emergency medicine fellowship program is to train and educate physicians in our clinical learning environment that values excellence in clinical care, patient safety, quality improvement, education, professionalism, and scholarly activities that prepare our trainees to be successful physicians and healthcare leaders.

The aims of our fellowship program are:

1. To develop competent independent physicians who excel in all aspects of the field of pediatric emergency medicine.
2. To produce physicians with skills in research and quality improvement strategies to allow them to make significant contributions to the future of pediatric emergency medicine.
3. To provide a progressive learning environment that promotes program innovation and sustainability.

To achieve these aims, we emphasize the six core competencies (patient care, medical knowledge, practice based learning, interpersonal skills, professionalism, and systems based practice) and their accompanying 23 PEM specific sub-competencies and milestones. These will be addressed through a variety of activities as described in each of the above sections.

We are a division of the UAB Department of Pediatrics. Currently, there are over 170 full-time faculty in general pediatrics and the subspecialty divisions. The Department of Pediatrics is responsible for more than 160,000 outpatient visits, including over 69,000 emergency department visits. General pediatric and subspecialty faculty manage more than 9,800 inpatient admissions per year. Total inpatient days are in excess of 78,000. The Department of Pediatrics has a major commitment to research and consistently ranks in the top 20 among all departments of pediatrics in the country in NIH funding. The Pediatric Residency Program consistently has a pass rate near 100% for both pediatrics and med peds. Only 16 of 200 (8%) US Pediatric Residency Training Programs have pass rates of 95% or higher. Seven of Children's of Alabama's pediatric specialty services were placed among the top programs in the United States by *U.S. News and World Report* in their 2015 ranking of The Best Children's Hospitals. The goals of our fellowship program emphasize the six core competencies, patient care, medical knowledge, practice based learning, interpersonal skills, professionalism, and systems based practice. They will be accomplished through a variety of activities as described in each section - Clinical, Teaching, Research and Administrative.



Schedule of Rotations

Below is a skeleton outline of the monthly rotations required for our Pediatric Emergency Medicine fellowship (arranged in no particular order). We strive to be flexible with our scheduling so that we can meet the interests and needs of our fellows.

Year One	Year Two (+ Biostats)	Year Three (+ Epidemiology)
Orientation/ED	*Research	*Research
*Adult ED	Research	*Research
Anesthesia	Research	Research
Selective	Research	Research
Toxicology	*Adult ED	Research
*Pediatric Critical Care	ED!	*Adult ED
*Trauma	ED!	ED!
ED	ED	ED!
ED	ED	ED
ED	ED	ED
ED	ED	ED
ED	ED	ED

ED/research: 75% ED; 25% research *Elective/Research: 50% Research

Note: A significant number of electives in the second and third years should be dedicated to research.

*No Pediatric ED call

! Concentrated ED time 16 shifts/month

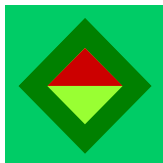
Must complete one orthopedics month and two weeks each of Abuse and EMS.

Suggested Electives:

(Electives may be taken during ED months or rotations may be arranged for two to four weeks during elective months.)

Adolescent
Burns
Child Abuse (physical and sexual)
Dermatology
Obstetrics
Otolaryngology
Plastic Surgery
Procedure month
Research
Simulation
Surgery
Orthopedics
Ultrasound

Administrative
Cardiology
Dentistry
Gynecology
Ophthalmology
Pediatric Critical Care
Pre-hospital Care (EMS)
Radiology
Sedation
Sports Medicine
Transport
International



Conference Schedule

Below is a skeleton outline of the monthly conferences for the Pediatric Emergency Medicine department. Conferences are held every Thursday morning. Fellows are also welcome to attend conferences held by other pediatric divisions at the University of Alabama at Birmingham.

Week 1	Week 2	Week 3	Week 4	Week 5
8:00 Fellow EBM	Board Prep	Faculty EBM	Guest Lecture or Research Education	Research Lecture or Breakfast
9:00 Interesting Case	Toxicology	Procedures	Fellow Meeting	SOC
10:00 PEM Reports	Journal Club	Procedures	US/ QI	SOC
11:00 ED/HM Lecture	PICU/ED/PHM	Procedures	Radiology	M & M
12:00 Grand Rounds	Grand Rounds	Grand Rounds	Grand Rounds	Grand Rounds

Other Pediatric Fellowship Program at UAB:

Adolescent Medicine	Infectious Diseases
Allergy/Immunology	Internal Medicine/Pediatrics
Cardiology	Neonatal-Perinatal Pediatrics
Child Neurology	Nephrology
Critical Care Medicine	Pulmonary
CVICU	Rheumatology
Endocrinology	Sleep Medicine
Gastroenterology	Surgery
Hematology/Oncology	
Hospice/Palliative Care	
Hospital Medicine	



Conference Schedule Example

Fellow Conference Schedule May 2019

<u>Date</u>	<u>Time</u>	<u>Presenter</u>	<u>Topic</u>
5/2/2019	8:00	Melissa	Faculty EBM
	9:00	Christine	Interesting Case
	10:00	David Bernard	PEM Reports
	11:00	Nipam	ED/PHM Conf. – Manuscript Writing
	12:00		Grand Rounds-
5/9/2019	8:00	Valerie, Christina	Board Prep
	9:00	Michele Nichols	Toxicology
	10:00	Chris, Stephen	Journal Club
	11:00	Chris, Jeremy	PICU/ED/PHM- Sepsis
	12:00		Grand Rounds -
5/16/2019	8:00	Stephen	Fellow EBM
	9:00		Simulation – Cardiac Cases
	10:00		Simulation - **In SIM Center**
	11:00		Simulation -
	12:00		Grand Rounds -
5/23/2019	8:00	Nipam Shah	Research Education Lecture
	9:00	Ann, Terri	Fellow Meeting
	10:00	Mark	Ultrasound
	11:00	Stephen	Radiology Rounds
	12:00		Grand Rounds –
5/30/2018	8:00		Fellow Breakfast
	9:00		SOC- Ryan, James
	10:00		SOC- Stephen, Jacinta, Sam
	11:00	Jacinta	M&M
	12:00		Grand Rounds –



Other Fellowship Responsibilities/Activities

Conferences to Attend:

Dedicated Fellows' Education Day: Thursdays 0800 - 1200

- Includes:
- Guest Lectures (invited speakers) (1-2 times per month)
 - Evidence Based Medicine Conference (2 times per month)
 - Book Review (weekly)
 - Fellows' Meeting (monthly)
 - Interesting Case Conference (monthly)
 - Toxicology (monthly)
 - Fellows' Research (four times a year)
 - Radiology Conference (monthly)
 - PICU/PEM Conference (monthly)
 - PEM Journal Club (monthly)
 - Board Prep (monthly)
 - PEM/PHM Conference (six times a year)
 - Patient Safety Series (four times a year)
 - US Conference (six times a year)

Other Available Conferences to Attend:

- Trauma Conference: Scheduled on Wednesdays at 0800 (morbidity/mortality conference)
- Morning Resident Conference: Thursdays at 0700
- Resident Noon Conference: Monday – Wednesday at 1200
- Pediatric Grand Rounds: Thursdays at 1200 Noon
- Combined Physiology Conference: Thursdays at 0730.

Required Conferences to Teach

- Pediatric Emergency Medicine Journal Club
- Combined PHM/PEM Conference (as a second year fellow)
- Toxicology Conference - (prepared during toxicology month)
- EBM (once a year)

[Additional conferences may be requested as needed]

Required Courses:

- Pediatric Advanced Life Support (provider, instructor)
- Advanced Trauma Life Support
- Basic Life Support
- Medical Director's Course
- Mini-Quality Academy

Other Available Courses:

- Advanced Cardiac Life Support
- Neonatal Resuscitation Program (neonatal)
- Advanced Pediatric Life Support

Academic Courses:

UAB School of Public Health courses:	Clinical Research Training Program (20 hrs.)
	Epidemiology, Biostatistics I & II
Recommended courses:	Ethics OR other selected courses.



A Few of Our Recent and Ongoing Pediatric Research Projects

- E Bishop: Toxicity of Gummy Medication Ingestions
 - L Rochford: Use of self-administered aversive therapy for smoking cessation in caregivers of pediatric patients with respiratory problems
 - S Strachan: Utility of chest radiographs in the evaluation of pediatric submersion injury victims in the emergency department
 - J Smedley: Assessing the effect of music on caregiver anxiety while visiting the pediatric emergency department
 - J Cooper: Geo-mapping to identify areas of highest ED utilization
 - S Blakemore: Education of Residents and Interns on Travel History Collection
 - J Buice: Measuring the potential impact of bedside US on patient outcomes for The management of skin and soft tissue infections
 - V Davis: Pediatric Emergency Medicine Department Asthma Pathway Effect on Length of Stay
 - J Statler: Intranasal versus intravenous ketamine for procedural sedation in children with non-operative fractures
Grant Funded
 - Klasner A: Febrile Sickle Cell Patients, ED Time to Antibiotics
 - Pruitt C: Herpes Simplex Virus (HSV) Infection in Young Infants
- The Pediatric Septic Shock Collaborative



Alumni List

Name	Year	Residency Program	Current Position
Robert Plouff, M.D.	1988-1990	Children's Hosp Medical Center of Cincinnati	Assistant Professor Univ of MN
Glenn Faries, M.D.	1989-1991	McGill University and University of Toronto	Executive Director of A Charitable Organization
William Hardwick, M.D.	1990-1992	Children's Hosp Medical Center of Cincinnati	Private Phys. Vestavia Peds
Alice Calhoun, M.D.	1991-1994	Stanford University Sch of Med	Assistant Professor — Children's Hosp Ctrl CA
Raymond Deeb, M.D.	1991-1994	Univ of CO Health Sci & Univ of CA San Diego & UAB	Pres/CEO Pri Care Phys. Briarcliff Peds
Steven Baldwin, M.D.	1992-1994	UAB	Professor — UAB
Laura P. James, M.D.	1992-1994	University of Arkansas	Assistant Professor — Arkansas Children's Hospital
Madeline Joseph, M.D.	1992-1994	University of Florida Health Science Ctr.	Clinical Professor Univ of FL
Joseph Dobson, M.D.	1993-1994	UAB	Associate Professor/Director Med Univ of SC/Mercy Children
Robert Lembersky, M.D.	1993-1995	University of Pittsburgh	Attending Physician — East TN Child Hosp
Kathy Monroe, M.D.	1993-1995	UAB	Professor — UAB
Sangeeta Chona, M.D.	1994-1996	PL1 Washington Univ, PL2 State Univ of NY, PL3 UAB	Director of PEM Simulation, Children's Oakland
Kim Copeland, M.D.	1994-1996	Vanderbilt University and UAB	Legacy Health Sys. Portland, OR
Kevin Polley, M.D.	1994-1996	Johns Hopkins Hospital	Med. Dir. — Children's Emerg Ctr. GHS
Barry Gilmore, M.D.	1995-1998	Univ of AK for Medical Sciences	Associate Professor — LeBonheur Medical Center
Jay Pershad, M.D.	1995-1998	Wayne State University (Michigan)	Associate Professor — Univ of TN/Ped EM Specialists
Judson Barber, M.D.	1996-1999	UAB	Professor — UAB
Michelle Embling, M.D.	1996-1999	UAB	Progressive Medical Associates — Nevada
Ki Abel, M.D.	1997-2000	Baylor College of Medicine	Homemaker, Not Practicing PEM
Samuel Bartle, M.D.	1997-2000	University of Tennessee	Assistant Professor — VA Commonwealth Univ
Byron Mainor, M.D.	1998-2001	Med University of South Carolina	PEM Physician — Memorial Heal Univ Med Ctr.
Donald Arnold, M.D.	1999-2002	University of Virginia	Associate Professor — Vanderbilt Univ School of Med.
Aleta Bonner, M.D.	1999-2002	Scott & White Hospital	Assistant Professor — Dell Children's Med Ctr. - Austin
Annalise Sorrentino, M.D.	2000-2003	UAB and University of Missouri, KC	Professor — UAB
David Spiro, M.D.	2000-2003	University of CO Health Sci Center	Associate Professor — Oregon Health and Science Center
James Schmidt, M.D.	2001-2004	Carolinas Medical Center	Associate Professor — Children's Hospital of the Kings & Daughters
Terri J. Coco, M.D.	2002-2005	UAB	Associate Professor — UAB
Dale DuBois, M.D.	2003-2006	Creighton University	Assistant Professor — Methodist Children's Hospital, Texas
Molly Hasty, M.D.	2003-2006	UAB	Homemaker, Not Practicing PEM
Laurie Marzullo, M.D.	2003-2006	Children's Hospital of Philadelphia	Associate Professor — UAB
Brandon Carr, M.D.	2004-2007	UAB	Assistant Professor — Arnold Palmer Hospital
Jennifer McCain, M.D.	2004-2007	UAB	Private Practice — Mayfair Associates
Taj Madiwale, M.D.	2004-2007	Miami Children's Hospital	Assistant Professor — University of Tennessee
Marjorie Lee White, M.D.	2005-2008	UAB	Professor, UAB
Mark Baker, M.D.	2005-2008	Emory University	Associate Professor — UAB
Dawn Kendrick, M.D.	2005-2008	Main Medical Center	Assistant Professor — East Carolina University
William Scott Russell, M.D.	2005-2008	UAB	Associate Professor — Medical University of South Carolina

Name	Year	Residency Program	Current Position
Melissa N. Frascogna, M.D.	2006-2009	Northwestern University - Chicago	Assistant Professor — Blair E. Batson Hospital
Benjamin Jackson, M.D.	2006-2009	Medical University of SC COM	Assistant Professor — Medical University of South Carolina
Robert Lapus, M.D.	2006-2009	Univ. of Texas Houston	Assistant Professor — University of Texas Houston
Christopher Pruitt, M.D.	2007-2010	Med. Univ. of SC	Associate Professor — MUSC
Sarah Sterner, M.D.	2007-2010	St. Christopher's Hospital for Children	Assistant Professor — MUSC
Valerie Davis, M.D.	2007-2010	Univ. of TN	Assistant Professor — UAB
Kimberly Gran, M.D.	2008-2011	Vanderbilt Univ.	Assistant Professor — Vanderbilt
Michael Mitchell, M.D.	2008-2011	The Children's Hospital, Denver & Univ. of CO Health Sciences Ctr.,	Assistant Professor — WFUBMC
Timothy Galey, M.D.	2008-2011	Orlando Regional Medical Center	Assistant Professor — WFUBMC
Shruti Kant, M.D.	2009-2012	Univ. of Nevada SOM	Assistant Professor — University of California San Francisco
Nicole Jones, M.D.	2009-2012	Florida State Univ. COM	Assistant Professor — UAB
Kelly Clayton, M.D.	2009-2012	Univ. of Florida COM - Jacksonville	Assistant Professor — Joe DiMaggio Children's Hosp.
Elizabeth Yust, M.D.	2010-2013	UAB at Birmingham	Assistant Professor — Texas Children's Hospital-Baylor
Christopher Restrepo, M.D.	2010-2013	Palmetto Health Richland	Assistant Professor — Emergency Med. Assoc. of Tampa Bay, LLC
Heather Mitchell, M.D.	2010-2013	UAB	Assistant Professor, UAB
Laura Lindsay, M.D.	2011-2014	Medical University of South Carolina	Assistant Professor — Dayton Children's Hospital
Worth Barbour, M.D.	2011-2014	K. Hovnanian Children's Hospital — Neptune, NJ	Assistant Professor — St. Peter's Univ. Children's Hospital - New Jersey
Arianna Shirk, M.D.	2011-2014	UAB	Adjunct Asst. Professor — Kijabe, Africa
Pallavi Ghosh, M.D.	2012-2015	Morehouse School of Medicine,	Assistant Professor — UAB
David Smith, M.D.	2012-2015	Univ. of Florida COM	Attending Physician — Baptist Health Med Ctr.—FL
Rami Sunallah, M.D.	2012-2015	Univ. of Toledo	Attending Physician — Clear Lake Med Ctr—TX
Christine Campbell, M.D.	2013-2016	UAB	Assistant Professor — UAB
Shea Duerring, M.D.	2013-2016	Children's Hospital of the King's Daughters	Assistant Professor — UAB
Johanna Hall, M.D.	2013-2016	Mercer Memorial Health Univ. Medical Center	Attending — Children's Hospital Memorial Health, - GA
Kimberly Massey, M.D.	2013-2016	Univ. of Mississippi	Attending — Sacred Heart Children's Hospital—FL
Megan Brennard, M.D.	2014-2017	UAB	Attending – Centennial Medical Center
Jonathan Buice, M.D.	2014-2017	Carolinas Medical Center	Pediatric Emergency Medicine Associates– Atlanta, GA
James Langston Lee, M.D.	2014-2017	University of New Mexico	Attending — Huntsville Hospital
Timothy Todd Fleenor, M.D.	2015-2018	UAB	Attending — Huntsville Hospital
Joshua Haupt, M.D.	2015-2018	Memorial Health Univ. Medical Center	Attending — Children's Hospital Memorial Health—GA
Kathleen Richard, M.D.	2015-2018	UAB	Attending — Duke
Shaundra Blakemore, M.D.	2016-2019	UAB	Assistant Professor — UAB
Jacinta Cooper, M.D.	2016-2019	Cincinnati Children's Hospital Medical Center	Assistant Professor — Emory University
Jennifer Smedley, D.O.	2016-2019	Palmetto Health Children's Hospital	Denver



2019 Medical Faculty UAB Department of Pediatrics **Mitchell Cohen, MD - Chairman**

Page 19

Vice Chair for Clinical And Translational Research

David Kimberlin, M.D.

Vice-Chair for Education

Michele Nichols, M.D.

Vice-Chair for Research

Richard J. Whitley, M.D.

Vice-Chair for Clinical Affairs

Peter Glaeser, M.D.

Vice Chair For Outcomes

Smita Bhatia, M.D., MPH

ALLERGY and IMMUNOLOGY

(205-638-9072) 220-CPP

◆Dr. Prescott Atkinson

Professor

Dr. Amy CaJacob

Assistant Professor

Dr. Katie Grisanti

Assistant Professor

Dr. Suthida Kankirawatana

Assistant Professor

CARDIOLOGY

(205-934-3460) 9100-WIC

◆Dr. Yung R. Lau

Professor

Dr. Ahmed Asfari CVICU

Assistant Professor

Dr. Santiago Borasino CVICU

Professor

Dr. Wally F. Carlo

Associate Professor

Dr. Edward V. Colvin

Professor

Dr. Camden Hebson

Assistant Professor

Dr. Walter H. Johnson

Professor

Dr. Mark Law

Associate Professor

Dr. William McMahon

Professor

Dr. Erika Mendoza CVICU

Assistant Professor

Dr. F. Bennett Pearce

Professor

Dr. Leslie Rhodes

Assistant Professor

Dr. Robb L. Romp

Associate Professor

Dr. Hayden Zaccangi CVICU

Assistant Professor

CHILD ABUSE CPP1

Michael Taylor

Professor

CHILD INJURY CONTROL CTR

(205) 638-6031

◆William D. King, PhD

CRITICAL CARE

(205-638-9387) CPPI Suite 102

◆Dr. Nancy Tofil

Professor

Dr. Mark Buckmaster

Associate Professor

Dr. Madhura Hallman

Assistant Professor

Dr. Leslie Hayes

Associate Professor

Dr. Michele Kong

Associate Professor

Dr. Priya Prabhakaran

Associate Professor

Dr. Robert Richter

Assistant Professor

Dr. Chrystal Rutledge

Assistant Professor

Dr. Will Sasser

Assistant Professor

DEVELOPMENTAL PEDIATRICS

◆ Dr. Laura McGuinn

Professor

Dr. Snehal Khatri

Associate Professor

Dr. Myriam Peralta-Carcelen

Professor

Dr. Justin Schwartz

Assistant Professor

Dr. Kimberly Stringer

Associate Professor

EMERGENCY MEDICINE

(205-638-9587), 110-CPP

◆Dr. Peter Glaeser

Professor

Dr. Mark Baker

Associate Professor

Dr. Steven T. Baldwin

Professor

Dr. Judson Barber

Professor

Dr. David W. Bernard

Professor

Dr. Christine Campbell

Assistant Professor

Dr. Christina Cochran

Assistant Professor

Dr. Teresa Coco

Associate Professor

Dr. Catherine Cotney

Instructor

Dr. Valerie Davis

Assistant Professor

Dr. Shea Duerring

Assistant Professor

Dr. Pallavi Ghosh

Assistant Professor

Dr. Lynzee Head

Instructor

Dr. Terry Hope

Instructor

Dr. Nicole Jones

Assistant Professor

Dr. Ann Klasner

Professor

Dr. Patricia LaBorde

Assistant Professor

Dr. Edward Lose

Assistant Professor

Dr. Laurie Marzullo

Associate Professor

Dr. Heather Mitchell

Assistant Professor

Dr. Kathy W. Monroe

Professor

Dr. Michele H. Nichols

Professor

Dr. Melissa Peters

Associate Professor

Dr. James Sedlis

Assistant Professor

Dr. Annalise Sorrentino

Professor

Dr. Marjorie Lee White

Professor

ENDOCRINOLOGY

(205-638-9107) 230-CPP

◆Dr. Kenneth McCormick

Professor

Dr. Hussein Abdul-Latif

Professor

Dr. Ambika Ashraf

Professor

*Dr. Joycelyn Atchison

Professor

Dr. Giovanna Beauchamp

Assistant Professor

Dr. Caroline Colvin

Assistant Professor

Dr. Pallavi Iyer

Associate Professor

Dr. Rose James

Instructor

*Dr. Gail Mick

Professor

Dr. Mary Lauren Scott

Assistant Professor

Dr. Michael Stalvey

Assistant Professor

GASTROENTEROLOGY/ HEPATOLOGY/ NUTRITION

(205-638-9918) 618-Lowder

◆Dr. Reed Dimmitt

Professor

Dr. Nicholas CaJacob

Assistant Professor

Dr. David Galloway

Assistant Professor

Dr. Rachel Kassel

Assistant Professor

Dr. Jeanine Maclin

Associate Professor

Michelle Mastin, PhD

Assistant Professor

Dr. Jose Mestre

Professor

Dr. Gillian Noel

Assistant Professor

Dr. Janaina Nogueira

Assistant Professor

Dr. Amanda Soong

Assistant Professor

GENERAL PEDIATRICS & ADOLESCENT MEDICINE

(205-638-9585) 410-CPP

◆Dr. Carolyn S. Ashworth

*Dr. Jennie Andresen

Associate Professor

*Dr. Cason Benton

Associate Professor

Dr. Courtney Benton

Assistant Professor

*Dr. Jennifer Chambers

Assistant Professor

Dr. Candice Dye

Assistant Professor

Dr. Crayton A. Fargason

Professor

Dr. Jason Hartig

Associate Professor

Dr. Stewart Hill

Assistant Professor

*Dr. DeeAnne S. Jackson

Associate Professor

*Dr. Carin Richard Kiser

Associate Professor

Dr. Morissa Ladinsky

Associate Professor

Dr. Jamie McKinney

Assistant Professor

Dr. Annie Moroski

Assistant Professor

Dr. Susan Powell

Associate Professor

Dr. Terry C. Wall

Professor

Adolescent Medicine

Dr. Heather Ashley

Instructor

Dr. Tamera Coyne-Beasley

Professor

Dr. Nefertiti Durant

Associate Professor

Dr. Jamie McKinney

Assistant Professor

Dr. Rebekah Savage

Assistant Professor

Dr. Tina Simpson

Professor

Dr. Stephenie Wallace

Associate Professor

Med-Gerontology/Geriatrics/Palliative Care

(205-933-8101) VAMC 6TH. zip 0001

◆Dr. Sam Perna

Assistant Professor

Dr. Michael Barnett

Assistant Professor

Dr. Michael Hurst

Dr. Ashley C. Nichols



2019 Medical Faculty UAB Department of Pediatrics Mitchell Cohen, MD - Chairman

Page 20

HEMATOLOGY/ONCOLOGY

(205-638-9285) 512-Lowder

◆Dr. Kim Whelan	Acting Div. Director
Dr. Elizabeth Alva	Assistant Professor
Dr. Jamie Aye	Assistant Professor
Dr. Christy Bemrich-Stolz	Assistant Professor
Dr. Smita Bhatia	Professor
Dr. Joseph Chewning	Associate Professor
Dr. Gregory Friedman	Associate Professor
Dr. Frederick Goldman	Professor
Dr. Hilary Haines	Assistant Professor
Dr. Lee M. Hilliard	Professor
Dr. Thomas Howard	Professor
Dr. Emily Johnston	Assistant Professor
Dr. Matthew Kutny	Associate Professor
Wendy Landier, PhD, RN	Associate Professor
Dr. Jeffrey Lebensburger	Associate Professor
Dr. Wayne Liang	Assistant Professor
Dr. Katie Metrock	Assistant Professor
Brandi McClain Pernell, DNP	Assistant Professor
Dr. Hope Wilson	Assistant Professor
Dr. Julie Woolfson	Assistant Professor
Dr. Ana Xavier	Associate Professor

PEDIATRIC HOSPITAL MEDICINE

(205-638-9922) McWane 108

◆Dr. Robert F. Pass	Professor
Dr. Stephanie Berger	Assistant Professor
Dr. Emily Casey	Assistant Professor
Dr. Teresa Cornelius	Assistant Professor
Dr. Stewart Hill	Assistant Professor
Dr. Megan Hofto	Assistant Professor
Dr. Natalia Lotz	Instructor
Dr. Aldofo Molina	Assistant Professor
Dr. Lauren Nassetta	Assistant Professor
Dr. Mary Orr	Instructor
Dr. Nichole Samuy	Assistant Professor
Dr. Paul Scalici	Assistant Professor
Dr. Erinn Schmit	Assistant Professor
Dr. Cassie Smola	Assistant Professor
Dr. Susan Walley	Professor
Dr. Chang Wu	Assistant Professor
<u>Dr. Mark Anthony Zanni</u>	<u>Instructor</u>

INFECTIOUS DISEASE/ VIROLOGY

(205-934-2441) 308-CHB

◆Dr. Richard J. Whitley	Professor
Dr. David W. Kimberlin	Prof & Co-Director
Dr. Suresh Boppana	Professor
Dr. William J. Britt	Professor
Dr. Karen Fowler	Professor
Dr. S. Cecelia Hutto	Professor

INFECTIOUS DISEASE/ VIROLOGY (cont..)

(205-934-2441) 308-CHB

Dr. Scott James	Assistant Professor
Dr. Larisa Pereboeva	Assistant Professor
Dr. Swetha Pinninti	Assistant Professor
Dr. Claudette Poole	Assistant Professor
Mark Prichard, PhD	Professor
Dr. Shannon Ross	Associate Professor
Dr. Sergio Stagno	Professor Emeritus

NEONATAL/PERINATAL MED

(205-934-4680) 9380-WIC

◆Dr. Waldemar A. Carlo	Professor
Dr. Namasivayam Ambalavanan	Professor
<u>Dr. Nitin Arora</u>	<u>Assistant Professor</u>
Dr. Kathryn Barkett-Buchan	Assistant Professor
Dr. Terry Bierd	Associate Professor
Dr. Allison Black	Associate Professor
Dr. Dean Bruce	Associate Professor
Dr. Carl H. Coghill	Professor
Dr. Samuel Gentle	Assistant Professor
Dr. Hannah Hightower	Assistant Professor
Dr. Tamas Jilling	Associate Professor
Dr. Jegen Kandasamy	Assistant Professor
Dr. Virginia A. Karle	Professor
Dr. Charitharth Lal	Assistant Professor
Dr. Albert Manasyan (Zambia)	Assistant Professor
Dr. Joseph B. Philips	Professor
Dr. Maran Ramani	Assistant Professor
Dr. Ariel Salas	Assistant Professor
Dr. Brian Sims	Associate Professor
Dr. Christine Stoops	Assistant Professor
Dr. Trent Tripple	Associate Professor
Dr. Rune Toms	Associate Professor
Dr. Lindy Winter	Associate Professor

NEPHROLOGY

(205-638-9781) 516-Lowder

◆ Dr. Daniel Feig	Professor
Dr. David Askenazi	Professor
Dr. Sahar Fathallah-Shaykh	Associate Professor
Dr. Michael Seifert	Assistant Professor
Dr. Tennille Webb	Assistant Professor
Dr. Megan Yanik	Assistant Professor

NEUROLOGY

(205-996-7850) 314-CHB

◆ Dr. Leon S. Dure	Professor
Dr. Amitha Ananth	Assistant Professor
Dr. Emily Gantz	Instructor
Dr. Monisha Goyal	Professor

NEUROLOGY (cont.)

(205-996-7850) 314-CHB

Dr. Katherine Hammond	Assistant Professor
Dr. Krisztina Harsanyi-Jilling	Assistant Professor
Dr. Samuel Hopper	Assistant Professor
Dr. Pongkiat Kankirawatana	Professor
Dr. Micheal Lopez	Assistant Professor
Dr. Lydia Marcus	Instructor
Dr. Jan Mathisen	Professor
Dr. Tony McGrath	Associate Professor
Dr. Ismail Mohamed	Associate Professor
Dr. Jayne Ness	Professor
Dr. Sarah Novara	Assistant Professor
Dr. Alan K. Percy	Professor
Dr. Han Phan	Associate Professor
Dr. Rashid Salman	Assistant Professor
Scott Turner, DNP	Assistant Professor

PULMONOLOGY

(205-638-9583) 620-Lowder

◆Dr. Hector Gutierrez	Professor
Dr. Jennifer Guimbellot	Instructor
Dr. William Harris	Assistant Professor
Dr. Wyn Hoover	Associate Professor
Claire Lenker, PhD	Associate Professor
Dr. Mary Halsey Maddox	Assistant Professor
Dr. Teri Magruder	Associate Professor
Dr. Steven Rowe	Associate Professor
Dr. Ammar Saadoon	Assistant Professor
Dr. Brad Troxler	Assistant Professor
Dr. Brett Turner	Assistant Professor
Dr. Isabel Virella-Lowell	Professor

Huntsville Campus (256-551-4600)

Dr. Gerald Judy	Associate Professor
Dr. Vinit Mahesh	Associate Professor
Dr. Madhuri Penugonda	Assistant Professor

REHABILITATION MEDICINE

(205-638-9790) 210-CPP

◆Dr. Drew Davis	Associate Professor
Dr. Paola "Lala" Mendoza	Assistant Professor
Dr. Erin Swanson	Assistant Professor

RHEUMATOLOGY

(205-638-9438) 210-CPP

◆Dr. Randy Cron	Professor
Dr. Tim Beukelman	Associate Professor
Dr. Melissa Mannion	Assistant Professor
Dr. Emily Smitherman	Assistant Professor
Dr. Matthew Stoll	Associate Professor
Dr. Peter Weiser	Associate Professor



Example Contract



INITIAL RESIDENT AGREEMENT

This agreement is entered into the ____ day of **June, 2019** between the Board of Trustees of the University of Alabama on behalf of The University of Alabama Hospital ("Hospital"), and **Jane Doe** ("Resident").

Hospital wishes to appoint the Resident as a postgraduate year ____ resident in the _____ program. Program and Resident wishes to accept such appointment.

Therefore, the parties hereto agree as follows:

1. Term of Agreement. Unless earlier terminated in accordance with this agreement, the term of the Resident's appointment is one year commencing on **7/1/2019** and terminating on **6/30/2020**.

2. Graduate Medical Education Policies and Procedures. Resident has been provided a copy of the UAB Hospital Graduate Medical Education Policies and Procedures. Resident acknowledges receipt of said document as well as having read and understood it. Resident acknowledges and comprehends the guidelines and/or the processes outlined in the GME Policies and Procedures, including, without limitations, those sections regarding resident eligibility and requirements for residency training (Section III.A), resident responsibilities and conditions of appointment (Section V), educational program and faculty responsibilities (Section VII), financial support and benefits (Section IV), ancillary and support services (Section VI), disciplinary procedures (Section X), grievance procedures and due process (Section XI), professional liability insurance (Section IV.F), health and disability insurance (Section IV.E), annual leave (Section IV.G), supervision of residents (Section VIII.C.), duty hours (Section VIII.H), moonlighting (Section VIII.L), counseling services (Section VI.C), physician impairment (Section IX), residency closure/reduction (Section IV.B), restrictive covenants (Section III.C), and University of Alabama at Birmingham policies on harassment (Appendix 9).

3. ACGME Accreditation Related Activities. In programs accredited by the Accreditation Council for GME (ACGME), resident acknowledges and agrees to maintain compliance with activities related to program accreditation in the time prescribed. These activities include, but are not limited to, completing the ACGME Resident Survey, logging duty hours and completing case logs as requested by the Program Director.

4. Salaries. Salaries are determined each year based on the budget of the Hospital with approval by the Dean's Council for Graduate Medical Education. Resident shall be paid the salary approved for the appointed postgraduate year, as specified in Section 1 of this agreement, and in accordance with the GME Policies and Procedures, Section IV.D.

5. Physical Examination. Resident understands that failure to complete a health screening examination performed by the Hospital, as outlined in Section V.D. of the GME Policies and Procedures will result in suspension or termination of his/her appointment as a resident.

6. Tobacco-Free Hiring Policy. Resident understands that he/she will not be hired if found to test positive for nicotine use on the pre-employment drug screen performed by the Hospital, as outlined in Section V.E of the GME Policies and Procedures.

7. USMLE/COMLEX Examinations and Alabama Licensure. Resident understands that failure to pass the USMLE or COMLEX examinations and obtain licensure in the State of Alabama, as outlined in Sections V.K, V.L, and V.M of the GME Policies and Procedures, will result in suspension or termination of his/her appointment as a resident.

8. Renewal of Agreement. Resident understands and acknowledges that this agreement expires on the date set forth in Section 1 and that Hospital makes no commitment to renew this agreement. Reappointment and advancement of the Resident is at the discretion of the Program Director in accordance with Section III.F. of the GME Policies and Procedures. If a decision is made by the Hospital not to renew this agreement at the end of its one year term, notice of such nonrenewal shall be made in writing four months in advance of **6/30/2020**, in accordance with section III.D of the GME Policies and Procedures. However, if the primary reason for the non renewal occurs within the four months prior to the end of the agreement, the notice of non renewal may be sent less than four months in advance of the non renewal. Any resident receiving notice of intent to not renew his/her contract may request a hearing as outlined in Grievance Procedures, Section XI.C. Any resident receiving notice of intent of non-promotion to the next level of training may request informal adjudication as outlined in Grievance Procedures, Section XI.B. Each Resident who is offered a renewal of this agreement must accept such offer in writing within thirty (30) days of the date shown in the first paragraph of the renewal contract. Likewise, if a decision is made by the Resident not to renew this agreement at the



Policies and Procedures

end of its one year term, the resident shall submit notice of such nonrenewal in writing to the Graduate Medical Education Department four months in advance of **6/30/2020**.

9. Termination of Agreement. Hospital may terminate the Resident Agreement, as set forth in the GME Policies and Procedures. If the resident leaves the program, thereby terminating this agreement, the resident will have breached this agreement. In the event of such breach, resident understands and agrees to the following: 1) the Hospital will report the resident's breach of the agreement to the National Resident Matching Program, if applicable; and, 2) the Program Director and the Hospital will include the fact of the resident's breach in any reference letters.

10. Acceptance. This agreement shall not be effective and shall not bind either party unless it is submitted to Hospital within sixty (60) days of the date shown in the first paragraph of this agreement and accepted by the Hospital by signature below.

THE UNIVERSITY OF ALABAMA HOSPITAL: Program: _____



By: Alice Goepfert, MD, DIO

By: _____ M.D. - Program Director

By: Jane Doe - Resident

Date: **June 3, 2019**

The National Resident Matching Program (NRMP) recommends all applicants review the policies and procedures manual of any institution they are considering listing on their certified rank order list. We have included a copy of our Initial Resident Agreement for 2018-2019 that all incoming residents are required to sign. If you are interested in checking out a complete list of our policies and procedures, please check out the UAB Graduate Medical Education website at:

<http://medicine.uab.edu/medicine/home/residents-fellows/future>



Salary and Benefits

Salary	Benefits	Miscellaneous
<ul style="list-style-type: none"> • PGY-4 \$59,112 • PGY-5 \$61,214 • PGY-6 \$63,932 <p>* Stipends are reviewed annually in accordance with those of the Council of Teaching Hospitals.</p>	<p><u>At no cost:</u></p> <ul style="list-style-type: none"> • Professional liability insurance • Group term life insurance • Long-term disability insurance • Accidental death and dismemberment insurance • Photocopying/faxing privileges • Medline database • Counseling services through the UAB Faculty and Staff Assistance Program • Three weeks off/year • Family leave <p><u>Other benefits:</u></p> <ul style="list-style-type: none"> • Health insurance plans for residents, spouses and dependent children provided at favorable rates • Dental insurance at favorable rates • Hospital Parking at favorable rates • Campus Recreation Center • Onsite Childcare 	<ul style="list-style-type: none"> • Financial support for presentation at a scientific meeting • Conference travel allowance • Financial support for travel to fellows meeting • Financial support for international rotation • On-site Medical Library • Medical license reimbursement • PALS, ATLS Courses • Yearly in-service exam



Employee Benefits for House Officers

UNIVERSITY PAID INSURANCE

	<u>ANNUAL SALARY</u>	<u>COVERAGE</u>
1. Group Term Life Insurance	\$24,000-29,999	\$37,500
Coverage varies with salary as indicated.	\$30,000-39,999	\$50,000
No cost to employee.	\$40,000 and above, 125% of salary with a maximum insurance coverage of \$300,000.	
2. Accidental Death and Dismemberment Insurance	\$22,500 for accidental death	
No cost to employee.		
3. Long-Term Disability Insurance (Salary Continuation)		
After a 90-day waiting period, 66 2/3% month salary (not to exceed \$10,000 per month) for the first 90 days.		
The benefit is then reduced to 60%. No cost to employee.		

HEALTH CARE PLANS:

Some form of health insurance coverage is mandatory. Proof of insurance is required if the University's VivaChoice, VivaUAB, VivaAccess, or Blue Cross are not elected.

VivaUAB, VivaAccess, or Blue Cross monthly deductions:

	<u>Viva Choice</u>	<u>VivaUAB</u>	<u>VivaAccess</u>	<u>Blue Cross/PMD</u>
Single coverage	\$ 76.00	\$ 91.14	\$ 153.94	\$ 182.77
Employee+child(ren)	\$ 257.07	\$ 277.54	\$ 469.34	\$ 557.24
Employee+Spouse or EE+Spouse and Child	\$ 327.07	\$ 358.94	\$ 569.34	\$ 667.24
Family coverage	\$ 366.18	\$ 419.31	\$ 663.24	\$ 843.34

Coverage under UAB's group health care plans must begin on either the date of employment or the first day of the month following date of employment.

VOLUNTARY BENEFITS:

- BCBS Dental Plans:

	<u>Single</u>	<u>EE+Child(ren)</u>	<u>EE+Spouse or EE+Spouse and Child</u>	<u>Family</u>
Basic Option:	\$ 18.78	\$ 32.17	\$ 41.38	\$ 48.05
Comprehensive Option:	\$ 35.74	\$ 61.12	\$ 79.10	\$ 91.24

(See UAB Employee Handbook for more information)

- UAB Select: Flexible Spending Accounts - Pretax reimbursement for eligible medical and dependent care
Up to \$2650 per year in a health care account. For dependent care accounts, you can set aside \$5000 or \$2500 for married taxpayers filing separate returns.
- Voluntary Life Insurance
Maximum Coverage: Up to 5 times your salary, not to exceed \$1.4 million.
Guaranteed Issue: 3 times your salary or \$500,000; elected during the first 60 days of employment without evidence of insurability.
- Voluntary Accidental Death and Dismemberment Insurance
Maximum Coverage: \$500,000

OTHER BENEFITS:

- Social Security taxes and benefits established by the U.S. Government.
- Unemployment Compensation Insurance paid entirely by the University.
- On-the-job Injury/Illness Program paid entirely by the University.

This information is a brief summary of benefits for general purposes only.
Please refer to the UAB School of Medicine website for additional information (<http://medicine/home/>)



***Graduating Fellows'
Favorite Things about UAB Pediatric
Fellowship Training Program***

- Dr. Glaeser – very supportive Division Director
- Faculty very approachable, dedicated
- Large volume and patient diversity
- Patient workload (enough volume, not too much scutwork)
- Fellow residents
- Support and ancillary staff
- Quality of Attending Physicians
- Simulation
- Active, involved mentors
- Excellent, comprehensive clinical experience
- Moonlighting opportunities
- Nursing/RT/Pharmacy Staff
- Affordability of living in Birmingham
- Support from Virginia, Megan, & Jackie (coordinators)
- Vacation/Program Perks/Benefits
- Wonderful and supportive Program Director
- Prepares fellows to handle emergencies well
- Willingness of administration to alter program to meet fellows' needs
- Dedication to giving the best care
- Phenomenal teaching staff
- Prepares fellows to recognize a sick child quickly
- Wireless technology for all fellows
- Social Events
- Support from other fellows, Division Director, and attending's
- Team-oriented, supportive culture, and overall positive work environment
- The people, the people, the people
- Autonomy



2019-2020

UAB Department of Pediatrics
Fellowship Program
CPP1, Suite 110
1600 7th Avenue South
Birmingham, AL 35233-1711

Phone: 205-638-9587
Fax: 205-975-4623
Email: uabkids@peds.uab.edu