

**2018 - 2019**

**UAB Pediatric Emergency Medicine  
Fellowship Program  
Information Booklet**





## Welcome!

- We're very glad you're here! Thank you for your interest in our Fellowship Program.
- Throughout this booklet, we hope you'll find beneficial information that will help in your fellowship decision.
- If there is something you would like to know that is not included, please email or call us:

- Ann Klasner  
aklasner@peds.uab.edu



- Terri Coco  
tcoco@peds.uab.edu



- Brittany Appelboom  
bappelboom@peds.uab.edu  
205-638-6557  
(Contact person)





***UAB Pediatric Emergency  
Medicine 2018-2019***

**Table of Contents**

Welcome -----	1
Table of Contents -----	2
UAB Pediatrics by the Numbers -----	3
Birmingham by the Numbers -----	4
Where Fellows Live -----	5
Birmingham Attractions -----	6
Birmingham Websites -----	7-8
Fellows' Biographies -----	9-10
UAB Pediatric Emergency Medicine Fellowship Website -----	11
Schedule of Rotations -----	12
Conference Schedule -----	13
Conference Schedule Example -----	14
Other Fellowship Responsibilities/Activities -----	15
Pediatric Research Projects List -----	16
Alumni List -----	17-18
UAB Department of Pediatrics Faculty -----	19-20
Policies and Procedures -----	21
Initial Resident Agreement -----	22
Salary and Benefits -----	23
Benefits Overview -----	24
Fellows' List of Favorite Things -----	25



## ***UAB Pediatrics by the Numbers***

73,144	—	Number of Visits to Emergency Medicine in 2017
15,562	—	Inpatient Admissions in 2017 (COA)
380	—	Licensed beds (COA)
48	—	NICU bassinets
252.67	—	Daily Average Census 2017 (COA)
208	—	Pediatric Medical Faculty Members
22	—	Pediatric Emergency Medicine Faculty Members
9	—	Pediatric Emergency Medicine Fellows
66	—	Pediatric House Staff
28	—	Scheduled Vacation Days
Top 50	—	2016 U.S. News & World Report Ranking
16	—	Med/Peds House Staff
Top 20	—	Pediatric Departments in funding by NIH
760,000 sf	—	The largest single medical facility expansion project in the history of Alabama

***Birmingham by the Numbers***

2	—	Average annual snowfall in inches
23	—	Metro hospitals
15-20	—	Average number of minutes to commute to work
17	—	Public Golf Courses
23	—	State Parks
50+	—	Shopping Centers
62	—	Average temperature in degrees F
96	—	Antique malls and galleries
117	—	Days of precipitation
147	—	Miles from Birmingham to Atlanta, GA
192	—	Miles from Birmingham to Nashville
210	—	Miles from Birmingham to Destin, FL (The Beach)
500+	—	Restaurants
820	—	Median rent for 2 bedroom apartment



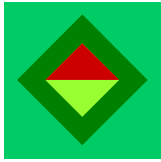
## *Where Fellows Live*





## ***Birmingham Attractions***

- SEC Headquarters
- Civil Rights Institute
- DeSoto Caverns
- Oak Mountain State Park
- Barber Motorsports Park
- Workplay Music Theater
- Alabama Sports Hall of Fame
- Birmingham Museum of Art
- McWane Center
- IMAX Theater
- Old Car Heaven
- Birmingham Zoo & Botanical Gardens
- Pepper Place Farmers Market
- Sidewalk Moving Picture Festival
- Birmingham Business Alliance
- Greater Birmingham Convention & Visitors Bureau
- Regions Field (Birmingham Baseball Stadium)
- Iron City Music Venue and Grill
- Alabama Adventure
- Regions Tradition Golf Tournament
- Do Dah Day Festival
- Railroad Park
- Birmingham Barons Baseball Team-Chicago White Sox AA minor league affiliate
- Birmingham Broadway Series
- The Alabama Theater
- Stardome Comedy Club
- Vulcan - Roman mythical god of the forge (tallest cast iron statue in the world)
- Vulcan Aftertunes
- Verizon Wireless Music Center
- Rickwood Field - world's oldest ballpark
- Talladega Super Speedway



## **Birmingham Websites**

<http://birminghamal.org/> - Website of Greater Birmingham Tourism & Conventions with links to area attractions, events and much more. Also has an app called INBirmingham

<http://www.thingstodoinbirminghamal.com/> - This website has everything to do in Birmingham on any given day.

<http://www.birmingham365.org/> - Everything there is to do in Birmingham including festivals, theatre, music, classes, and sports.

<http://www.alabamatheatre.com/> - Historic Alabama theatre where many performances and movies are shown throughout the year including *Rocky Horror Picture Show* Movie and Costume Party and several Holiday movies shown such as *It's a Wonderful Life* and *Miracle on 34<sup>th</sup> Street*.

<http://www.uab.edu/uabmagazine/> - UAB magazine, also has an app for your IPAD called UAB magazine

<http://www.uab.edu/medicine/magazine/> - UAB's School of Medicine, a magazine devoted to UAB research in the medical community.

[www.artsbma.org](http://www.artsbma.org) - Birmingham Museum of Art- great events like Art on the Rocks and exhibitions including *Warhol and Cars* and *Who Shot Rock and Roll*.

[www.bcri.org](http://www.bcri.org) - Birmingham Civil Rights Institute

<http://www.workplay.com/> - Cool venue for several bands

<http://www.barbermuseum.org/> - Barber Vintage Motorsport Museum, home of the best motorcycle collection with over 1200 motorcycles and race cars on display.

<http://www.pepperplacemarket.com/> - Saturdays - Fresh fruits and vegetables market

<http://www.ironcitybham.com/> - Restaurant and music venue





## **Birmingham Websites**

<http://alysstephens.uab.edu/> - Alys Stephens Performing Art Center with several performances throughout the year. This year's schedule included Anthony Bourdain, Mass Collective, Ledisi, Eric Benet, Martin Short, and the Alabama Orchestra Symphony.

<http://www.mcwane.org/> - McWane Science Center- local science museum with an IMAX theater offers several hands on activities and camps for children.

<http://www.alabamaballet.org/>- Alabama Ballet Company - local ballet with several performances throughout the year including *The Sleeping Beauty* and George Balanchine's *The Nutcracker*.

<http://railroadpark.org/> - Railroad Park, located on 1<sup>st</sup> Avenue South between 14<sup>th</sup> and 18<sup>th</sup> Streets, is venue that offers recreation and several activities.

[www.barons.com](http://www.barons.com) Birmingham Barons, our minor league baseball team which is an AA affiliate of the Chicago White Sox.

[www.bjcc.org](http://www.bjcc.org) Birmingham Jefferson Convention Complex holds several events and concerts including Jay-Z, Disney on Ice, Chris Tomlin, Birmingham Home and Garden Show, and America's Got Talent Live tour.

<http://www.southernmuseumofflight.org/> Southern Museum of Flight is one of the largest aviation museums in the Southeast, is dedicated to presenting civilian, military, and experimental aircraft and memorabilia from the earliest history of powered flight.

<http://ashof.org> Alabama Sports Hall of Fame and Museum holds over 5,000 sports artifacts

[www.rickwood.com](http://www.rickwood.com) Rickwood Field is America's oldest ballpark. Portions of the movie '42', was filmed here.

[www.visitvulcan.com](http://www.visitvulcan.com) Vulcan Park and Museum. Vulcan is the world's largest cast iron statute.

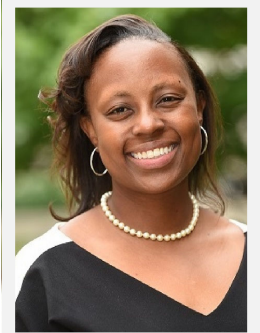


## 2018 Pediatric Emergency Medicine Fellows



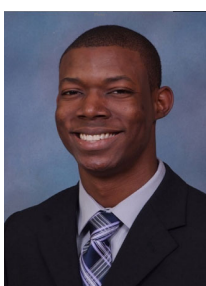
**Shaundra Blakemore, MD-** I was born and raised in Birmingham and went to Ramsay High School (Go Rams!). In high school, I was a volunteer at Children's and always knew I would eventually work here, though I took a little different route to my dream. I applied to Yale for college on a lark and actually go in, so of course I went! While I loved it there, I did NOT love the weather so after college I decided to live in tropical Singapore for a year and teach physiology. I took advantage of Singapore's many holidays to backpack through Southeast Asia. Then I returned where I started—back to Birmingham for med school.

**Jacinta Cooper, MD, PhD-** I was born in Atlanta, but raised in Colorado. I met my husband at the House of Blues in New Orleans while at Xavier University of Louisiana for undergrad. I moved back home to Colorado for medical and graduate school. Since moving to Cincinnati for residency I have become a runner and completed four half marathons. I enjoy yoga and working out and love styles of dance. My current favorite is called Dancefix. I know I'm moving to SEC country, but my favorite sports are gymnastics, cheerleading, figure skating,



**Jennifer Smedley, DO -** I grew up in the panhandle of Florida in a small town called Niceville. It is about 20 minutes from the Destin beaches and this where I spent most of my summers. I moved to Orlando for undergrad to attend UCF and then moved farther south to Sarasota for medical school. Despite staying in Florida for so long I have always wanted to get out. I guess going to residency in Columbia, SC was the first step. I really enjoy being outdoors especially in the mountains. I love hiking, camping, and kayaking. I am also very into yoga and hope to start doing some mediation soon.

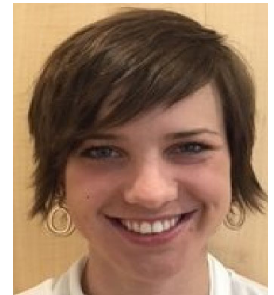
**Erika Bishop, MD-** I was born and raised in the small town of Greenwood, SC. I started playing soccer in my early years which afforded me the ability to do so at Wofford College. I stayed in state but traveled to the coast for medical school which I completed at the Medical University of South Carolina in Charleston. Then I ventured to the Ham for residency where I fell in love with the city, the pediatric program and its people. Despite initially being led astray in thinking I would sub-specialize in GI, I finally saw the light and converted to the good side (or dark depending on who you ask!). I am excited to become part of the PEM family!



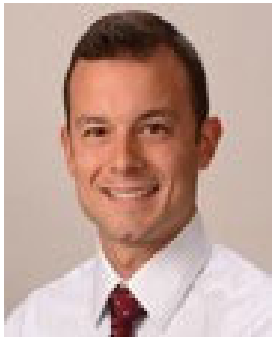
**Samuel Strachan, MD-** I was born in Nassau, Bahamas and moved state side for undergrad in South Carolina when I was 17. After finishing undergrad in Columbia I migrated over to Birmingham for med school and have stayed here ever since. I met my wife Ashton, who is an NP at the UAB student health center, while in med school. Ashton and I love to spend our time traveling and experiencing new cultures. I'm really excited to start fellowship and finally be a PEM doc!

**2018 Pediatric Emergency Medicine Fellows** *cont'd*

**Laura Rochford, MD-** I grew up in northern Virginia. Since then I've lived in TN, NY and most recently OH. I'm very excited about moving to Birmingham! My family lives in Knoxville, TN and they are happy that I will be a true southerner again. In fact, they have informed me that now that I am half-way to Destin, they will be visiting me much more often. I've heard amazing things about COA and I share your passion for emergency medicine and taking care of sick kids. When I am not at work I am most happy on a mountain bike. I feel very lucky to get the opportunity to be a fellow at COA!



**James Statler, MD-** I was born in Oklahoma but raised in Georgia. Oldest of 4 siblings growing up in a mostly Spanish household. We all speak fluent Spanish thanks to my Columbian mom. Dad is Canadian, does not speak Spanish though. Grew up playing football and baseball but also wrestled in high school. I played 4 years of collegiate baseball for Lagrange College in Georgia. I have 2 huskies: Nikko and Kirra (they do fine in warmer temperatures). I usually spend my free time out and exploring with them. Only TV I usually watch is Braves baseball, Falcon football, and Georgia football. Very excited to live in and experience Birmingham.

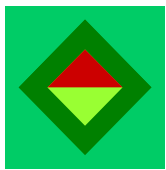


**Ryan Roddy, MD-** I'm an Alabama girl and I'm so excited to be coming back for fellowship! I took a pretty unusual route to become a PEM doctor which included performing musical theater professionally prior to medical school, and I have been known to break out into song and dance a time or two when the delirium hits on those overnight shifts. I spent the last three years in Little Rock for Residency. When I am not working my husband and I love spending time with our four rescue pups. We love to travel and are hoping to cross Alaska off our bucket list in the next year. It's going to be awesome working with people who share my passion for caring for acutely ill kiddos.



**Stephen Ruffenach, MD-** I was born in New Jersey but moved to Arizona at a young age and grew up in Tucson, AZ. I moved to Phoenix, AZ for college at Arizona State, back to Tucson for Medical School and then right back to Phoenix for residency at Phoenix Children's Hospital. After spending so much time bouncing back and forth between cities in Arizona I am very excited about the prospect of a new adventure in Birmingham and a change in scenery! When I am not working I love playing/watching sports and on a night off I can usually be found at the movies or catching a concert. I am very excited about joining the CoA PEM family and I look forward to meeting everyone!





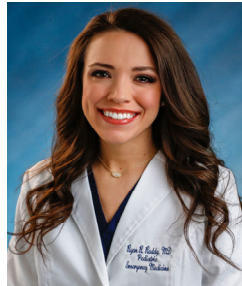
**Emergency  
Medicine  
Webpage**



**Emergency Medicine Fellowship**



James Statler, MD



Ryan Roddy, MD



Stephen Ruffenach, MD

The Pediatric Emergency Medicine (PEM) fellowship program at the University of Alabama at Birmingham (UAB) began its thirty fourth year in 2018. Our PEM program was accredited through the American Board of Pediatrics in the fall of 1999. We were last accredited in 2011 and our next visit is set for 2019. Since 1995, we have been dedicated to educating our fellows based on a three year model. The aims of our fellowship program are:

1. To provide a three year curriculum that trains individuals in all aspects of pediatric emergency medicine, including key procedures.
2. Gain broad knowledge and skills in common and uncommon pediatric emergencies as well as gain exposure to adult emergencies.
3. To produce physicians with skills in research and quality improvement strategies to allow them to support ongoing efforts in the field.

To achieve these aims, we emphasize the six core competencies (patient care, medical knowledge, practice based learning, interpersonal skills, professionalism, and systems based practice) and their accompanying 23 PEM specific sub-competencies and milestones. These will be addressed through a variety of activities as described in each of the above sections.

We are a division of the UAB Department of Pediatrics. Currently, there are over 170 full-time faculty in general pediatrics and the subspecialty divisions. The Department of Pediatrics is responsible for more than 160,000 outpatient visits, including over 69,000 emergency department visits. General pediatric and subspecialty faculty manage more than 9,800 inpatient admissions per year. Total inpatient days are in excess of 78,000. The Department of Pediatrics has a major commitment to research and consistently ranks in the top 20 among all departments of pediatrics in the country in NIH funding. The Pediatric Residency Program consistently has a pass rate near 100% for both pediatrics and med peds. Only 16 of 200 (8%) US Pediatric Residency Training Programs have pass rates of 95% or higher. Seven of Children's of Alabama's pediatric specialty services were placed among the top programs in the United States by *U.S. News and World Report* in their 2015 ranking of The Best Children's Hospitals. The goals of our fellowship program emphasize the six core competencies, patient care, medical knowledge, practice based learning, interpersonal skills, professionalism, and systems based practice. They will be accomplished through a variety of activities as described in each section - Clinical, Teaching, Research and Administrative.



## Schedule of Rotations

Below is a skeleton outline of the monthly rotations required for our Pediatric Emergency Medicine fellowship (arranged in no particular order). We strive to be flexible with our scheduling so that we can meet the interests and needs of our fellows.

Year One	Year Two (+ Biostats)	Year Three (+ Epidemiology)
Orientation/ED	*Research	*Research
*Adult ED	Research	*Research
Anesthesia	Research	Research
Selective	Research	Research
Toxicology	*Adult ED	Research
*Pediatric Critical Care	ED!	*Adult ED
*Trauma	ED!	ED!
ED	ED	ED!
ED	ED	ED
ED	ED	ED
ED	ED	ED
ED	ED	ED

ED/research: 75% ED; 25% research \*Elective/Research: 50% Research

Note: A significant number of electives in the second and third years should be dedicated to research.

\*No Pediatric ED call

! Concentrated ED time 16 shifts/month

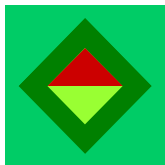
Must complete one orthopedics month and two weeks each of Abuse and EMS.

### Suggested Electives:

(Electives may be taken during ED months or rotations may be arranged for two to four weeks during elective months.)

Adolescent  
Burns  
Child Abuse (physical and sexual)  
Dermatology  
Obstetrics  
Otolaryngology  
Plastic Surgery  
Procedure month  
Research  
Simulation  
Surgery  
Orthopedics  
Ultrasound

Administrative  
Cardiology  
Dentistry  
Gynecology  
Ophthalmology  
Pediatric Critical Care  
Pre-hospital Care (EMS)  
Radiology  
Sedation  
Sports Medicine  
Transport  
International



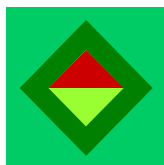
## **Conference Schedule**

Below is a skeleton outline of the monthly conferences for the Pediatric Emergency Medicine department. Conferences are held every Thursday morning. Fellows are also welcome to attend conferences held by other pediatric divisions at the University of Alabama at Birmingham.

<b>Week 1</b>	<b>Week 2</b>	<b>Week 3</b>	<b>Week 4</b>	<b>Week 5</b>
<b>8:00 Fellow EBM</b>	<b>Board Prep</b>	<b>Faculty EBM</b>	<b>Guest Lecture or Research Education</b>	<b>Research Lecture or Breakfast</b>
<b>9:00 Interesting Case</b>	<b>Toxicology</b>	<b>Procedures</b>	<b>Fellow Meeting</b>	<b>SOC</b>
<b>10:00 PEM Reports</b>	<b>Journal Club</b>	<b>Procedures</b>	<b>US/ QI</b>	<b>SOC</b>
<b>11:00 ED/HM Lecture</b>	<b>PICU/ED/PHM</b>	<b>Procedures</b>	<b>Radiology</b>	<b>M &amp; M</b>
<b>12:00 Grand Rounds</b>	<b>Grand Rounds</b>	<b>Grand Rounds</b>	<b>Grand Rounds</b>	<b>Grand Rounds</b>

### **Other Pediatric Fellowship Program at UAB:**

Adolescent Medicine	Infectious Diseases
Allergy/Immunology	Internal Medicine/Pediatrics
Cardiology	Neonatal-Perinatal Pediatrics
Child Neurology	Nephrology
Critical Care Medicine	Pulmonary
CVICU	Rheumatology
Endocrinology	Sleep Medicine
Gastroenterology	Surgery
Hematology/Oncology	
Hospice/Palliative Care	
Hospital Medicine	



## ***Conference Schedule Example***

### **Fellow Conference Schedule**

**June 2018**

(Scheduler: Erika Bishop)

<u>Date</u>	<u>Time</u>	<u>Presenter</u>	<u>Topic</u>
June 7	8:00	Sam Strachan	Fellow EBM
	9:00	Kathy Monroe	Interesting Case
	10:00	David Bernard	PEM Practice
	11:00	Valerie, Christina	Board Prep
	12:00		Grand Rounds
June 14	8:00	Nipam Shah	Research Education
	9:00	Todd Fleenor	M&M
	10:00	C. Pruitt, Erika	Journal Club
	11:00	Michele Nichols	Combined PICU/ED/PHM
	12:00		Grand Rounds
June 21	8:00	Laurie Marzullo	Faculty EBM-
	9:00	Christina Cochran	Simulation – Professionalism Cases
	10:00		Simulation
	11:00		Simulation
	12:00		Grand Rounds
June 28	8:00		Guest Lecture-
	9:00	Ann Klasner	Fellow Meeting
	10:00	Mark Baker	Ultrasound- Abdominal
	11:00	Erika Bishop	Radiology Rounds
	12:00		Grand Rounds

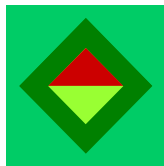
**\*PICU conference room**

**\*\*ED Conf Room**

Revised: 5-17-18

Off service: Laura Rochford





## ***Other Fellowship Responsibilities/Activities***

### **Conferences to Attend:**

Dedicated Fellows' Education Day: Thursdays 0800 - 1200

- Includes:
- Guest Lectures (invited speakers) (1-2 times per month)
  - Evidence Based Medicine Conference (2 times per month)
  - Book Review (weekly)
  - Fellows' Meeting (monthly)
  - Interesting Case Conference (monthly)
  - Toxicology (monthly)
  - Fellows' Research (four times a year)
  - Radiology Conference (monthly)
  - PICU/PEM Conference (monthly)
  - PEM Journal Club (monthly)
  - Board Prep (monthly)
  - PEM/PHM Conference (six times a year)
  - Patient Safety Series (four times a year)
  - US Conference (six times a year)

### **Other Available Conferences to Attend:**

- Trauma Conference: Scheduled on Wednesdays at 0800 (morbidity/mortality conference)
- Morning Resident Conference: Thursdays at 0700
- Resident Noon Conference: Monday – Wednesday at 1200
- Pediatric Grand Rounds: Thursdays at 1200 Noon
- Combined Physiology Conference: Thursdays at 0730.

### **Required Conferences to Teach**

- Pediatric Emergency Medicine Journal Club
- Combined PHM/PEM Conference (as a second year fellow)
- Toxicology Conference - (prepared during toxicology month)
- EBM (once a year)

*[Additional conferences may be requested as needed]*

### **Required Courses:**

- Pediatric Advanced Life Support (provider, instructor)
- Advanced Trauma Life Support
- Basic Life Support
- Medical Director's Course
- Mini-Quality Academy

### **Other Available Courses:**

- Advanced Cardiac Life Support
- Neonatal Resuscitation Program (neonatal)
- Advanced Pediatric Life Support

### **Academic Courses:**

UAB School of Public Health courses:	Clinical Research Training Program (20 hrs.)
	Epidemiology, Biostatistics I & II
Recommended courses:	Ethics OR other selected courses.





## ***A Few of Our Recent and Ongoing Pediatric Research Projects***

- E Bishop: Toxicity of Gummy Medication Ingestions
  - L Rochford: Use of self-administered aversive therapy for smoking cessation in caregivers of pediatric patients with respiratory problems
  - S Strachan: Low vs High fidelity simulation training in management of head injuries
  - J Smedley: Assessing the effect of music on caregiver anxiety while visiting the pediatric emergency department
  - J Cooper: Geo-mapping to identify areas of highest ED utilization
  - S Blakemore: Education of Residents and Interns on Travel History Collection
  - Buice J: Measuring the potential impact of bedside US on patient outcomes for The management of skin and soft tissue infections
  - Davis V: Pediatric Emergency Medicine Department Asthma Pathway Effect on Length of Stay
  - Klasner A: Febrile Sick Cell Patients, ED Time to Antibiotics
  - Pruitt C: Herpes Simplex Virus (HSV) Infection in Young Infants
- Concordance of C-Reactive Protein (CRP) and Erythrocyte Sedimentation Rate (ESR) in the Pediatric Emergency Department
- The Pediatric Septic Shock Collaborative



## Alumni List

Name	Year	Medical School	Residency Program	Current Position
Robert Plouff, M.D.	1988-1990		Children's Hosp Medical Center of Cincinnati	Assistant Professor Univ of MN
Glenn Faries, M.D.	1989-1991	University of Alberta	McGill University and University of Toronto	Executive Director of A Charitable Organization
William Hardwick, M.D.	1990-1992	UASOM	Children's Hosp Medical Center of Cincinnati	Private Phys. Vestavia Peds
Alice Calhoun, M.D.	1991-1994	UCLA SOM	Stanford University Sch of Med	Assistant Professor Children's Hosp Ctrl CA
Raymond Deeb, M.D.	1991-1994	University of Miami SOM	Univ of CO Health Sci & Univ of CA San Diego & UAB	Pres/CEO Pri Care Phys. Briarcliff Peds
Steven Baldwin, M.D.	1992-1994	Albany Medical College	UAB	Professor UAB
Laura P. James, M.D.	1992-1994	University of SC SOM	University of Arkansas	Assistant Professor Arkansas Children's Hospital
Madeline Joseph, M.D.	1992-1994	Tichreen Univ Lattakia Syria	Univ of Florida Health Science Ctr.	Clinical Professor Univ of FL
Joseph Dobson, M.D.	1993-1994	Emory University SOM	UAB	Associate Professor/Director Med Univ of SC/Mercy Children
Robert Lembersky, M.D.	1993-1995	Pritzker SOM	University of Pittsburgh	Attending Phys. East TN Child Hosp
Kathy Monroe, M.D.	1993-1995	UASOM	UAB	Professor UAB
Sangeeta Chona, M.D.	1994-1996	UASOM	PL1 Washington Univ, PL2 State Univ of NY, PL3 UAB	Director of PEM Simulation, Children's Oakland
Kim Copeland, M.D.	1994-1996	Oregon Health Sciences Univ	Vanderbilt University and UAB	Legacy Health Sys. Portland, OR
Kevin Polley, M.D.	1994-1996	Medical University of SC	Johns Hopkins Hospital	Med. Dir. Children's Emerg Ctr. GHS
Barry Gilmore, M.D.	1995-1998	Univ of Arkansas COM	Univ of AK for Medical Sciences	Associate Prof, LeBonheur Medical Center
Jay Pershad, M.D.	1995-1998	Seth GS Medical School, India	Wayne State University (Michigan)	Associate Professor Univ of TN/Ped Em Spec
Judson Barber, M.D.	1996-1999	UASOM	UAB	Associate Professor UAB
Michelle Embling, M.D.	1996-1999	Medical Univ of SC	UAB	Progressive Medical Associates—NV
Ki Abel, M.D.	1997-2000	University of FL COM	Baylor College of Medicine	Homemaker, Not Practicing PEM
Samuel Bartle, M.D.	1997-2000	University of South AL	University of Tennessee	Assistant Professor VA Commonwealth Univ
Byron Mainor, M.D.	1998-2001	Medical College of Georgia	Med University of South Carolina	PEM Phys. Memorial Heal Univ Med Ctr.
Donald Arnold, M.D.	1999-2002	Emory University SOM	University of Virginia	Associate Professor Vand Univ Sch of Med.
Aleta Bonner, M.D.	1999-2002	Texas AM University	Scott & White Hospital	Assistant Professor Dell Children's Medical Ctr. - Austin
Annalise Sorrentino, M.D.	2000-2003	University of Missouri, KC	UAB and University of Missouri, KC	Associate Professor UAB
David Spiro, M.D.	2000-2003	University of California	University of CO Health Sci Center	Associate Professor Oregon Health and Science Center
James Schmidt, M.D.	2001-2004	University of NC	Carolinas Medical Center	Associate Professor, Children's Hospital of the Kings & Daughters
Terri J. Coco, M.D.	2002-2005	UASOM	UAB	Associate Professor UAB
Dale DuBois, M.D.	2003-2006	Creighton University	Creighton University	Assistant Professor Meth Children's Hospital, Texas
Molly Hasty, M.D.	2003-2006	University of Louisville	UAB	Homemaker, Not Practicing PEM
Laurie Marzullo, M.D.	2003-2006	Albert Einstein	Children's Hospital of Philadelphia	Assistant Professor UAB
Brandon Carr, M.D.	2004-2007	Medical College of Georgia	UAB	Assistant Professor Arnold Palmer Hospital
Jennifer McCain, M.D.	2004-2007	Medical College of Georgia	UAB	Private Practice, Mayfair Associates
Taj Madiwale, M.D.	2004-2007	George Washington Univ	Miami Children's Hospital	Assistant Professor University of Tennessee
Marjorie Lee White, M.D.	2005-2008	UASOM	UAB	Professor, UAB

Name	Year	Medical School	Residency Program	Current Position
Mark Baker, M.D.	2005-2008	University of Chicago	Emory University	Associate Professor, UAB
Dawn Kendrick, M.D.	2005-2008	East Carolina University	Main Medical Center	Assistant Professor East Carolina Univ.
William Scott Russell, M.D.	2005-2008	Medical College of Georgia	UAB	Associate Professor Medical Univ. of SC
Melissa N. Frascogna, M.D.	2006-2009	Univ. of MS Medical Center	Northwestern University - Chicago	Assistant Professor Blair E. Batson Hospital
Benjamin Jackson, M.D.	2006-2009	Wake Forest University	Medical University of SC COM	Assistant Professor Medical Univ. of SC
Robert Lopus, M.D.	2006-2009	Univ. of Santo Tomas, Philippines	Univ. of Texas Houston	Assistant Professor Univ. of Texas Houston
Christopher Pruitt, M.D.	2007-2010	Med. Univ. of SC SOM	Med. Univ. of SC	Assistant Professor , UAB
Sarah Sterner, M.D.	2007-2010	Medical College of Georgia	St. Christopher's Hospital for Children	Assistant Professor MUSC
Valerie Davis, M.D.	2007-2010	Univ. of Nebraska COM	Univ. of TN	Assistant Professor UAB
Kimberly Gran, M.D.	2008-2011	Medical College of Georgia	Vanderbilt Univ.	Assistant Professor, Vanderbilt
Michael Mitchell, M.D.	2008-2011	Brody SOM at East Carolina Univ.	The Children's Hospital, Denver & Univ. of CO Health Sciences Ctr.,	Assistant Professor WFUBMC
Timothy Galey, M.D.	2008-2011	Saint George's Univ. -Granada	Orlando Regional Medical Center	Assistant Professor WFUBMC
Shruti Kant, M.D.	2009-2012	Grant Medical College	Univ. of Nevada SOM	Assistant Professor, UCSF
Nicole Jones, M.D.	2009-2012	Wake Forest Univ. SOM	Florida State Univ. COM	Assistant Professor, UAB
Kelly Clayton, M.D.	2009-2012	Univ. of Miami SOM	Univ. of Florida COM - Jacksonville	Assistant Professor Joe DiMaggio Children's Hosp.
Elizabeth Yust, M.D.	2010-2013	Indiana University SOM	UAB at Birmingham	Assistant Professor TX Children's Hospital-Baylor
Christopher Restrepo, M.D..	2010-2013	Univ. of South Carolina SOM	Palmetto Health Richland	Assistant Professor Emergency Med. Assoc. of Tampa Bay, LLC
Heather Mitchell, M.D.	2010-2013	UASOM	UAB	Assistant Professor, UAB
Laura Lindsay, M.D.	2011-2014	Univ. of Toledo COM	Medical University of South Carolina	Assistant Professor Dayton Children's Hospital
Worth Barbour, M.D.	2011-2014	Faculty li-Poznan Univ. of Medical Sciences - Poland	K. Hovnanian Children's Hospital Neptune, NJ	Assistant Professor St. Peter's Univ. Children's Hospital - New Jersey
Arianna Shirk, M.D.	2011-2014	Wake Forest Univ. SOM	UAB	Adjunct Asst. Professor, Kijabe, Africa
Pallavi Ghosh, M.D.	2012-2015	Grant Medical College, India	Morehouse School of Medicine,	Assistant Professor, UAB
David Smith, M.D.	2012-2015	Univ. of Florida COM	Univ. of Florida COM	Attending Physician, Baptist Health Med Ctr.—FL
Rami Sunallah, M.D.	2012-2015	University Faculty of Medicine, Egypt	Univ. of Toledo	Attending Physician, Clear Lake Med Ctr—TX
Christine Campbell, MD	2013-2016	UAB	UAB	Assistant Professor, UAB
Shea Duerring, MD	2013-2016	Eastern VA Med. School	Children's Hospital of the King's Daughters	Assistant Professor, UAB
Johanna Hall, MD	2013-2016	American Univ. of the Caribbean	Mercer Memorial Health Univ. Medical Cen- ter	Attending, Children's Hospital Memorial Health, - GA
Kimberly Massey, MD	2013-2016	Ross Univ. SOM –Dominica	Univ. of Mississippi	Attending, Sacred Heart Children's Hospital—FL
Megan Brennard, MD	2014-2017	UAB	UAB	Attending— Centennial Medical Center
Jonathan Buice, MD	2014-2017	Medical College of Georgia	Carolinas Medical Center	Pediatric Emergency Medicine Associates— Atlanta, GA
James Langston Lee, MD	2014-2017	University of Texas Southwestern Medical Center	University of New Mexico	Attending— Huntsville Hospital
Timothy Todd Fleenor, MD	2015-2018	American Univ. of the Caribbean	UAB	Attending Huntsville Hospital
Joshua Haupt, MD	2015-2018	St. George's University	Memorial Health Univ. Medical Center	Attending, Children's Hospital Memorial Health—GA
Kathleen Richard, MD	2015-2018	Wake Forest University	UAB	Attending Huntsville Hospital



# 2018 Medical Faculty UAB Department of Pediatrics Mitchell Cohen, MD - Chairman

Page 19

**Vice-Chair for Education**  
*Michele Nichols, M.D.*

**Vice-Chair for Research**  
*Richard J. Whitley, M.D.*

**Vice-Chair for Clinical Affairs**  
*Peter Glaeser, M.D.*

**Vice Chair for Clinical and Translational Research**  
*David Kimberlin, M.D.*

**Vice Chair For Outcomes**  
*Smita Bhatia, M.D., MPH*

## ALLERGY and IMMUNOLOGY

(205-638-9072) 220-CPP

### ◆Dr. Prescott Atkinson

Dr. Coralie S. Hains

Dr. Suthida Kankirawatana

### Professor

Associate Professor

Assistant Professor

## CARDIOLOGY

(205-934-3460) 9100-WIC

### ◆Dr. Yung R. Lau

Dr. Jeffery Alten CVICU

Dr. Santiago Borasino CVICU

Dr. Wally F. Carlo

Dr. Edward V. Colvin

Dr. Walter H. Johnson

Dr. Mark Law

Dr. William S. McMahon

Dr. F. Bennett Pearce

Dr. Leslie Rhodes

Dr. Robb L. Romp

Dr. Hayden Zaccangi CVICU

### Professor

Professor

Associate Professor

Associate Professor

Professor

Professor

Associate Professor

Professor

Professor

Assistant Professor

Associate Professor

Assistant Professor

## CHILD ABUSE

CPP1

### Michael Taylor

### Professor

## CHILD INJURY CONTROL CTR

(205) 638-6031 Magnolia Bldg 3rd Floor

### ◆William D. King, PhD

## CRITICAL CARE

(205-638-9387) CPPI Suite 102

### ◆Dr. Nancy Tofil

Dr. Margaret Winkler

Dr. Mark Buckmaster

Dr. Leslie Hayes

Dr. Michele Kong

Dr. Priya Prabhakaran

Dr. Chrystal Rutledge

Dr. Will Sasser

### Acting Div. Director

Professor

Associate Professor

Associate Professor

Associate Professor

Associate Professor

Assistant Professor

Assistant Professor

## DEVELOPMENTAL PEDIATRICS

TBA

Dr. Justin Schwartz

Assistant Professor

## EMERGENCY MEDICINE

(205-638-9587) 110-CPP

### ◆Dr. Peter Glaeser

Dr. Mark Baker

Dr. Steven T. Baldwin

Dr. Judson Barber

Dr. David W. Bernard

Dr. Christine Campbell

Dr. Christina Cochran

Dr. Teresa Coco

Dr. Catherine Cotney

Dr. Valerie Davis

Dr. Shea Duerring

Dr. Pallavi Ghosh

Dr. Terry Hope

Dr. Christina Inman

Dr. Nicole Jones

Dr. Ann Klasner

Dr. Patricia LaBorde

Dr. Florence Lee

Dr. Laurie Marzullo

Dr. Heather Mitchell

Dr. Kathy W. Monroe

Dr. Michele H. Nichols

Dr. Melissa Peters

Dr. Christopher Pruitt

Dr. Annalise Sorrentino

Dr. Marjorie Lee White

Dr. Matt Digman

### Professor

Associate Professor

Professor

Professor

Professor

Assistant Professor

Assistant Professor

Associate Professor

Instructor

Assistant Professor

Assistant Professor

Assistant Professor

Instructor

Instructor

Assistant Professor

Professor

Instructor

Instructor

Associate Professor

Assistant Professor

Professor

Professor

Associate Professor

Assistant Professor

Professor

Associate Professor

Assistant Professor

## ENDOCRINOLOGY

(205-638-9107) 230-CPP

### ◆Dr. Kenneth McCormick

Dr. Hussein Abdul-Latif

Dr. Ambika Ashraf

\*Dr. Joycelyn Atchison

Dr. Caroline Colvin

Dr. Pallavi Iyer

Dr. Rose James

\*Dr. Gail Mick

Dr. Mary Lauren Scott

Dr. Michael Stalvey

### Professor

Professor

Professor

Professor

Assistant Professor

Associate Professor

Instructor

Professor

Assistant Professor

Assistant Professor

## GASTROENTEROLOGY/ HEPATOLOGY/ NUTRITION

(205-638-9918) 618-Lowder

### ◆Dr. Reed Dimmitt

Margaux Barnes, PhD

Dr. David Galloway

Dr. Traci Jester

Dr. Rachel Kassel

Dr. Jeanine Maclin

Michelle Mastin, PhD

Dr. Jose Mestre

Dr. Janaina Nogueira

### Professor

Assistant Professor

Assistant Professor

Assistant Professor

Assistant Professor

Associate Professor

Assistant Professor

Professor

Assistant Professor

## GENERAL PEDIATRICS & ADOLESCENT MEDICINE

(205-638-9585) 410-CPP

### ◆Dr. Carolyn S. Ashworth

\*Dr. Jennie Andresen

Dr. Allury Arora

\*Dr. Cason Benton

Krista Casazza, PhD

\*Dr. Allison Cavender

\*Dr. Jennifer Chambers

Dr. Candice Dye

Dr. H. Hughes Evans

Dr. Crayton A. Fargason

\*Dr. DeeAnne S. Jackson

\*Dr. Snehal Khatri

\*Dr. Carin Richard Kiser

Dr. Morissa Ladinsky

Dr. Jamie McKinney

Dr. Myriam Peralta

Dr. Terry C. Wall

### Professor

Associate Professor

Assistant Professor

Associate Professor

Associate Professor

Assistant Professor

Assistant Professor

Assistant Professor

Professor

Professor

Associate Professor

Assistant Professor

Associate Professor

Associate Professor

Assistant Professor

Professor

Professor

## Adolescent Medicine

Heather McGinnis, PhD

Dr. Nefertiti Durant

Dr. Tina Simpson

Dr. Marsha S. Sturdevant

Dr. Stephenie Wallace

Assistant Professor

Associate Professor

Associate Professor

Professor

Associate Professor

## Med-Gerontology/Geriatrics/Palliative Care

(205-933-8101) VAMC 6TH, zip 0001

### ◆Dr. Sam Perna

Dr. Michael Barnett

Dr. Michael Hurst

Dr. Ashley C. Nichols

### Assistant Professor

Assistant Professor

Assistant Professor

Assistant Professor



# **2018 Medical Faculty UAB Department of Pediatrics** **Mitchell Cohen, MD - Chairman**

Page 20

## **HEMATOLOGY/ONCOLOGY**

(205-638-9285) 512-Lowder

<b>♦Dr. Kim Whelan</b>	<b>Acting Div. Director</b>
Dr. Elizabeth Alva	Assistant Professor
Dr. Smita Bhatia	Professor
Dr. Christy Bemrich-Stolz	Assistant Professor
Dr. Joseph Chewning	Associate Professor
Dr. Gregory Friedman	Associate Professor
Dr. Frederick Goldman	Professor
Dr. Hilary Haines	Assistant Professor
Dr. Lee M. Hilliard	Professor
Dr. Thomas Howard	Professor
Dr. Matthew Kutny	Assistant Professor
Wendy Landier, PhD, RN	Associate Professor
Dr. Jeffrey Lebensburger	Associate Professor
Dr. Zachary LeBlanc	Instructor
Brandi McClain Pernell, DNP	Assistant Professor
Purnima Singh, PhD	Assistant Professor
Avi Madan-Swain, PhD	Professor
Dr. Alyssa Reddy	Professor
Erik Westin, PhD	Instructor
Dr. Julie Woolfson	Assistant Professor
Dr. Ana Xavier	Assistant Professor

## **PEDIATRIC HOSPITAL MEDICINE**

(205-638-9922) McWane 108

<b>♦Dr. Robert F. Pass</b>	<b>Prof &amp; Director</b>
Dr. Stephanie Berger	Assistant Professor
Dr. Emily Casey	Assistant Professor
Dr. Megan Hofto	Assistant Professor
Dr. Natalia Lotz	Instructor
Dr. Sri Narayanan	Assistant Professor
Dr. Lauren Nassetta	Assistant Professor
Dr. Mary Orr	Instructor
Dr. Nichole Samuy	Assistant Professor
Dr. Paul Scalici	Assistant Professor
Dr. Susan Walley	Associate Professor
Dr. Chang Wu	Assistant Professor

## **INFECTIOUS DISEASE/ VIROLOGY**

(205-934-2441) 308-CHB

<b>♦Dr. Richard J. Whitley</b>	
Dr. David W. Kimberlin	Prof & Co-Director
Mary Ballestas, PhD	Assistant Professor
Dr. Suresh Boppana	Professor
Dr. William J. Britt	Professor
Dr. Marilyn Crain	Professor
Maaiké Everts, PhD	Associate Professor
Dr. Karen Fowler	Professor

## **INFECTIOUS DISEASE/ VIROLOGY (cont..)**

(205-934-2441) 308-CHB

Dr. S. Cecelia Hutto	Professor
Dr. Scott James	Assistant Professor
Mark Prichard, PhD	Professor
Debra Quenelle, PhD	Associate Professor
Dr. Shannon Ross	Associate Professor
Veronica Sanchez, PhD	Assistant Professor
Dr. Sergio Stagno	Professor Emeritus

## **NEONATAL/PERINATAL MED**

(205-934-4680) 9380-WIC

<b>♦Dr. Waldemar A. Carlo</b>	<b>Professor</b>
Dr. Namasivayam Ambalavanan	Prof & Co-Director
Dr. Allison Black	Assistant Professor
Dr. Kathryn Buchan	Assistant Professor
Dr. Carl H. Coghill	Professor
Dr. George El Ferzli	Assistant Professor
Dr. Hannah Hightower	Assistant Professor
Dr. Tamas Jilling	Associate Professor
Dr. Jegen Kandasamy	Assistant Professor
Dr. Virginia A. Karle	Professor
Dr. Charitharth Lal	Assistant Professor
Dr. Albert Manasyan (Zambia)	Assistant Professor
Dr. Joseph B. Philips	Professor
Dr. Maran Ramani	Assistant Professor
Dr. Ariel Salas	Assistant Professor
Dr. Trent Tipple	Associate Professor
Dr. Brian Sims	Associate Professor
Dr. Rune Toms	Associate Professor
Dr. Lindy Winter	Associate Professor

## **NEPHROLOGY**

(205-638-9781) 516-Lowder

<b>♦ Dr. Daniel Feig</b>	<b>Professor</b>
Dr. David Askenazi	Professor
Dr. Sahar Fathallah-Shaykh	Associate Professor
Dr. Michael Seifert	Assistant Professor
Dr. Monica Tucci-Cramer	Assistant Professor

## **NEUROLOGY**

(205-996-7850) 314-CHB

<b>♦ Dr. Leon S. Dure</b>	<b>Professor</b>
Dr. Matthew Alexander	Assistant Professor
Dr. Pierre Fequiere	Assistant Professor
Dr. Monisha Goyal	Professor
Dr. Katherine Hammond	Assistant Professor
Dr. Krisztina Harsanyi-Jilling	Assistant Professor

## **NEUROLOGY (cont.)**

(205-996-7850) 314-CHB

Dr. Samuel Hopper	Assistant Professor
Dr. Pongkiat Kankirawatana	Professor
Dr. Jan Mathisen	Professor
Dr. Tony McGrath	Associate Professor
Dr. Ismail Mohamed	Associate Professor
Dr. Jayne Ness	Associate Professor
Dr. Alan K. Percy	Professor
Dr. Alyssa Reddy	Professor
Dr. Rashid Salman	Assistant Professor

## **PULMONOLOGY**

(205-638-9583) 620-Lowder

<b>♦Dr. Hector Gutierrez</b>	<b>Professor</b>
*Dr. Kristin Avis	Associate Professor
Dr. Jennifer Guimbellot	Instructor
Dr. William Harris	Assistant Professor
Dr. Wyn Hoover	Associate Professor
Claire Lenker, PhD	Associate Professor
Dr. Isabel Lowell	Associate Professor
Dr. David Lozano	Associate Professor
Dr. Mary Halsey Maddox	Assistant Professor
Dr. Teri Magruder	Associate Professor
Dr. Ammar Saadoun	Assistant Professor
Dr. Steven Rowe	Associate Professor
Valerie Tam, PhD	Asst Prof (Grant funded)
Dr. Brad Troxler	Assistant Professor
Dr. Brett Turner	Assistant Professor

## **Huntsville Campus (256-551-4600)**

Dr. Gerald Judy	Associate Professor
Dr. Vinit Mahesh	Associate Professor
Dr. Madhuri Penugonda	Assistant Professor

## **REHABILITATION MEDICINE**

(205-638-9790) 210-CPP

<b>♦Dr. Drew Davis</b>	<b>Associate Professor</b>
Dr. Paola "Lala" Mendoza	Assistant Professor
Dr. Erin Swanson	Assistant Professor
Dr. Charles Law	Adjunct Professor

## **RHEUMATOLOGY**

(205-638-9438) 210-CPP

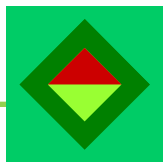
<b>♦Dr. Randy Cron</b>	<b>Professor</b>
Dr. Tim Beukelman	Associate Professor
Dr. Melissa Mannion	Assistant Professor
Dr. Matthew Stoll	Associate Professor
Dr. Peter Weiser	Associate Professor



## ***Policies and Procedures***

The National Resident Matching Program (NRMP) recommends all applicants review the policies and procedures manual of any institution they are considering listing on their certified rank order list. We have included a copy of our Initial Resident Agreement for 2018-2019 that all incoming residents are required to sign. If you are interested in checking out a complete list of our policies and procedures, please check out the UAB Graduate Medical Education website at:

<http://medicine.uab.edu/medicine/home/residents-fellows/future>



# UAB MEDICINE

## UAB HOSPITAL

### INITIAL RESIDENT AGREEMENT

This agreement is entered into the \_\_\_\_ day of \_\_\_\_ between the Board of Trustees of the University of Alabama on behalf of The University of Alabama Hospital ("Hospital"), and \_\_\_\_ ("Resident").  
Hospital wishes to appoint the Resident as a postgraduate year \_\_\_\_ resident in the \_\_\_\_ Program and Resident wishes to accept such appointment.

Therefore, the parties hereto agree as follows:

- 1. Term of Agreement.** Unless earlier terminated in accordance with this agreement, the term of the Resident's appointment is one year commencing on \_\_\_\_ and terminating on \_\_\_\_.
- 2. Graduate Medical Education Policies and Procedures.** Resident has been provided a copy of the UAB Hospital Graduate Medical Education Policies and Procedures. Resident acknowledges receipt of said document as well as having read and understood it. Resident acknowledges and comprehends the guidelines and/or the processes outlined in the GME Policies and Procedures, including, without limitations, those sections regarding resident eligibility and requirements for residency training (Section III.A), resident responsibilities and conditions of appointment (Section V), educational program and faculty responsibilities (Section VII), financial support and benefits (Section IV), ancillary and support services (Section VI), disciplinary procedures (Section X), grievance procedures and due process (Section XI), professional liability insurance (Section IV.F), health and disability insurance (Section IV.E), annual leave (Section IV.G), supervision of residents (Section VIII.C), duty hours (Section VIII.H), moonlighting (Section VIII.L), counseling services (Section VI.C), physician impairment (Section IX), residency closure/reduction (Section IV.B), restrictive covenants (Section III.C), and University of Alabama at Birmingham policies on harassment (Appendix 9).
- 3. ACGME Accreditation Related Activities.** In programs accredited by the Accreditation Council for GME (ACGME), resident acknowledges and agrees to maintain compliance with activities related to program accreditation in the time prescribed. These activities include, but are not limited to, completing the ACGME Resident Survey, logging duty hours and completing case logs as requested by the Program Director.
- 4. Salaries.** Salaries are determined each year based on the budget of the Hospital with approval by the Dean's Council for Graduate Medical Education. Resident shall be paid the salary approved for the appointed postgraduate year, as specified in Section 1 of this agreement, and in accordance with the GME Policies and Procedures, Section IV.D.
- 5. Physical Examination.** Resident understands that failure to complete a health screening examination performed by the Hospital, as outlined in Section V.D. of the GME Policies and Procedures will result in suspension or termination of his/her appointment as a resident.
- 6. Tobacco-Free Hiring Policy.** Resident understands that he/she will not be hired if found to test positive for nicotine use on the pre-employment drug screen performed by the Hospital, as outlined in Section V.E of the GME Policies and Procedures.
- 7. USMLE/COMLEX Examinations and Alabama Licensure.** Resident understands that failure to pass the USMLE or COMLEX examinations and obtain licensure in the State of Alabama, as outlined in Sections V.K, V.L, and V.M of the GME Policies and Procedures, will result in suspension or termination of his/her appointment as a resident.
- 8. Renewal of Agreement.** Resident understands and acknowledges that this agreement expires on the date set forth in Section 1 and that Hospital makes no commitment to renew this agreement. Reappointment and advancement of the Resident is at the discretion of the Program Director in accordance with Section III.F. of the GME Policies and Procedures. If a decision is made by the Hospital not to renew this agreement at the end of its one year term, notice of such nonrenewal shall be made in writing four months in advance of \_\_\_\_, in accordance with section III.D of the GME Policies and Procedures. However, if the primary reason for the non renewal occurs within the four months prior to the end of the agreement, the notice of non renewal may be sent less than four months in advance of the non renewal. Any resident receiving notice of intent to not renew his/her contract may request a hearing as outlined in Grievance Procedures, Section XI.C. Any resident receiving notice of intent of non-promotion to the next level of training may request informal adjudication as outlined in Grievance Procedures, Section XI.B. Each Resident who is offered a renewal of this agreement must accept such offer in writing within thirty (30) days of the date shown in the first paragraph of the renewal contract. Likewise, if a decision is made by the Resident not to renew this agreement at the end of its one year term, the resident shall submit notice of such nonrenewal in writing to the Graduate Medical Education Department four months in advance of \_\_\_\_.
- 9. Termination of Agreement.** Hospital may terminate the Resident Agreement, as set forth in the GME Policies and Procedures. If the resident leaves the program, thereby terminating this agreement, the resident will have breached this agreement. In the event of such breach, resident understands and agrees to the following: 1) the Hospital will report the resident's breach of the agreement to the National Resident Matching Program, if applicable; and, 2) the Program Director and the Hospital will include the fact of the resident's breach in any reference letters.
- 10. Acceptance.** This agreement shall not be effective and shall not bind either party unless it is submitted to Hospital within sixty (60) days of the date shown in the first paragraph of this agreement and accepted by the Hospital by signature below.

THE UNIVERSITY OF ALABAMA HOSPITAL:

By: \_\_\_\_\_  
Gustavo Heudebert, MD- Designated Institutional Official

Date: \_\_\_\_\_, 20\_\_\_\_

By: \_\_\_\_\_  
Program Director

Date: \_\_\_\_\_, 20\_\_\_\_

Program:

RESIDENT:

By: \_\_\_\_\_

Date: \_\_\_\_\_, 20\_\_\_\_





Salary	Benefits	Miscellaneous
<ul style="list-style-type: none"> <li>• PGY-4 \$57,953</li> <li>• PGY-5 \$60,</li> <li>• PGY-6 \$62,057</li> </ul> <p>* Stipends are reviewed annually in accordance with those of the Council of Teaching Hospitals.</p>	<p><u>At no cost:</u></p> <ul style="list-style-type: none"> <li>• Professional liability insurance</li> <li>• Group term life insurance</li> <li>• Long-term disability insurance</li> <li>• Accidental death and dismemberment insurance</li> <li>• Pagers</li> <li>• Photocopying/faxing privileges</li> <li>• Medline database</li> <li>• Counseling services through the UAB Faculty and Staff Assistance Program</li> <li>• Three weeks off/year</li> <li>• Family leave</li> </ul> <p><u>Other benefits:</u></p> <ul style="list-style-type: none"> <li>• Health insurance plans for residents, spouses and dependent children provided at favorable rates</li> <li>• Dental insurance at favorable rates</li> <li>• Hospital Parking at favorable rates</li> <li>• Campus Recreation Center</li> <li>• Onsite Childcare</li> </ul>	<ul style="list-style-type: none"> <li>• Financial support for presentation at a scientific meeting</li> <li>• Conference travel allowance</li> <li>• Financial support for travel to fellows meeting</li> <li>• Financial support for international rotation</li> <li>• On-site Medical Library</li> <li>• Medical license reimbursement</li> <li>• PALS, ATLS Courses</li> <li>• Yearly in-service exam</li> </ul>





## ***Employee Benefits for House Officers***

### **UNIVERSITY PAID INSURANCE**

	<b><u>ANNUAL SALARY</u></b>	<b><u>COVERAGE</u></b>
1. Group Term Life Insurance	\$24,000-29,999	\$37,500
Coverage varies with salary as indicated.	\$30,000-39,999	\$50,000
No cost to employee.	\$40,000 and above, 125% of salary with a maximum insurance coverage of \$300,000.	
2. Accidental Death and Dismemberment Insurance	\$22,500 for accidental death	
No cost to employee.		
3. Long-Term Disability Insurance (Salary Continuation)		
After a 90-day waiting period, 66 2/3% month salary (not to exceed \$10,000 per month) for the first 90 days.		
The benefit is then reduced to 60%. No cost to employee.		

### **HEALTH CARE PLANS:**

Some form of health insurance coverage is mandatory. Proof of insurance is required if the University's VivaUAB, VivaAccess, or Blue Cross are not elected.

VivaUAB, VivaAccess, or Blue Cross monthly deductions:

	<b><u>YOUR COST (2016)</u></b>			
	<b><u>Viva Choice</u></b>	<b><u>VivaUAB</u></b>	<b><u>VivaAccess</u></b>	<b><u>Blue Cross/PMD</u></b>
Single coverage	\$ 76.00	\$ 85.00	\$ 153.94	\$ 182.77
Employee+up to 2	\$ 253.98	\$ 267.75	\$ 447.67	\$ 548.06
Family coverage	\$ 366.18	\$ 390.66	\$ 663.73	\$ 843.34

Coverage under UAB's group health care plans must begin on either the date of employment or the first day of the month following date of employment.

### **VOLUNTARY BENEFITS:**

1. MetLife Dental Plans  
Basic Option: Single Coverage - \$18.78 month, Family Coverage - \$48.05/month  
Comprehensive Option: Single Coverage - \$35.74, Family Coverage - \$91.24  
(See UAB Employee Handbook for more information)
2. UAB Select: Flexible Spending Accounts - Pretax reimbursement for eligible medical and dependent care  
Up to \$2550 per year in a health care account. For dependent care accounts, you can set aside \$5000 or \$2500 for married taxpayers filing separate returns.
3. Voluntary Life Insurance  
Maximum Coverage: Up to 5 times your salary, not to exceed \$1.4 million.  
Guaranteed Issue: 3 times your salary or \$500,000; elected during the first 60 days of employment without evidence of insurability.
4. Voluntary Accidental Death and Dismemberment Insurance  
Maximum Coverage: \$500,000

### **OTHER BENEFITS:**

1. Social Security taxes and benefits established by the U.S. Government.
2. Unemployment Compensation Insurance paid entirely by the University.
3. On-the-job Injury/Illness Program paid entirely by the University.

This information is a brief summary of benefits for general purposes only.  
Please refer to the UAB School of Medicine website for additional information (<http://medicine/home/>)



***Graduating Fellows'  
Favorite Things about UAB Pediatric  
Fellowship Training Program***

- Dr. Glaeser – very supportive Division Director
- Faculty very approachable, dedicated
- Large volume and patient diversity
- Patient workload (enough volume, not too much scutwork)
- Fellow residents
- Support and ancillary staff
- Quality of Attending Physicians
- Simulation
- Active, involved mentors
- Excellent, comprehensive clinical experience
- Moonlighting opportunities
- Nursing/RT/Pharmacy Staff
- Affordability of living in Birmingham
- Support from Virginia, Megan, & Jackie (coordinators)
- Vacation/Program Perks/Benefits
- Wonderful and supportive Program Director
- Prepares fellows to handle emergencies well
- Willingness of administration to alter program to meet fellows' needs
- Dedication to giving the best care
- Phenomenal teaching staff
- Prepares fellows to recognize a sick child quickly
- Wireless technology for all fellows
- Social Events
- Support from other fellows, Division Director, and attending's
- Team-oriented, supportive culture, and overall positive work environment
- The people, the people, the people
- Autonomy





2018-2019

UAB Department of Pediatrics  
Fellowship Program  
CPP1, Suite 110  
1600 7th Avenue South  
Birmingham, AL 35233-1711

Phone: 205-638-9587  
Fax: 205-975-4623  
Email: [uabkids@peds.uab.edu](mailto:uabkids@peds.uab.edu)