



Information Packet

For more information

email

Timc@FlowJo.com

FlowJo Enterprise

- FlowJo Enterprise is a server-based version of FlowJo X, designed to assist with data management, analysis, and report generation for high dimension, high throughput flow or mass cytometry data.
- Data, templates, workspaces and reports are all linked together in one place, the FlowJo server. Data and workspaces never get lost!
- Data is always retained on the server; it will never leave campus.
- Data, templates, workspaces and reports can only be accessed with administrator-based permissions. Data is secured to an individual, lab or department.



FlowJo Enterprise: Components

- **4thWall (optional)** – A program that uploads data to the server directly from a specified cytometer (Can be set to automatically or manually upload)
- **FlowJo Server** – FlowJo's high performance calculation engines reside on a user-specified server for power processing multiple or individual tasks
- **FlowJo vX** – Users can access and store data, templates, workspaces and reports using the familiar vX interface or via a server webpage.

FlowJo Enterprise: Levels

FlowJo Enterprise is available as one of three tiered packages, depending on what the end users anticipate they will be using the server for.

- **Level 1** – Performance. This level harnesses the power of the FlowJo Server, its RAM and processing power to assist in analysis of large numbers of files or difficult workspaces.
 - Users will access the server's power by simply connecting to it through FlowJo.
 - Analysis and report generation gestures are the same as if using FlowJo vX on a standard workstation.



FlowJo Enterprise: Levels

- **Level 1** – Continued.
 - Users can run sophisticated and memory intensive automated gating tools incorporated in R including:
 - SPADE
 - FlowMeans
 - Other statistical packages formulated as plugins to a FlowJo template.

FlowJo Enterprise: Levels

- **Level 2** – Automation. Includes all of the Level 1 capabilities plus the end users can string together templates to produce automated analysis pipelines.
 - Users will employ a series of templates to produce specific reports.
 - Analysis can be automated immediately when the data arrive on the server via 4thWall, greatly reducing the amount of time spent analyzing repetitive experiments.
 - Automated analysis and reports can be executed and reviewed remotely, without needing to use FlowJo vX.



FlowJo Enterprise: Levels

- **Level 3** – Integration. Includes all of the Level 1 and 2 capabilities plus the end users can integrate their data tables with a queryable database to link results with data, templates, workspaces and data.
 - Individual workspaces that generate tabular reports can be intergrated with a LIMS or database of choice.
 - Automated analysis pipelines that produce tabular reports can be automatically set to update a given database in real time.

FlowJo Enterprise: Requirements

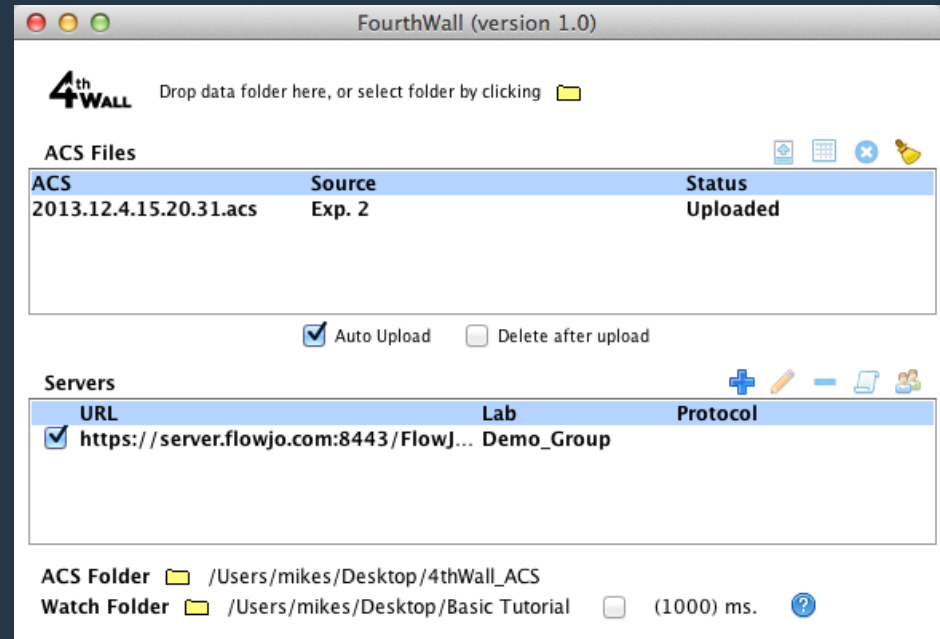
- FlowJo Enterprise requires an institutional site license.
- FlowJo Enterprise must be deployed on a server(s) owned by the institute, or leased as an Amazon Web Service (FlowJo does not provide hardware).
- The server hardware recommendations are:
 - 32 GB RAM
 - 8 or 16 quad core processors

FlowJo Enterprise: Requirements

- FlowJo Enterprise will run on the following server Operating systems:
 - Linux, Debian, or Red Hat Enterprise
 - Mac OSX 10.6+
 - Windows 7
- FlowJo Enterprise requires the Apache Tomcat Web Server version 7 and above.
- The file system for FlowJo Enterprise can be: HSF+/HSFX with aliases (i.e. symbolic links), NTFS and network mapped drives, Samba

4thWall

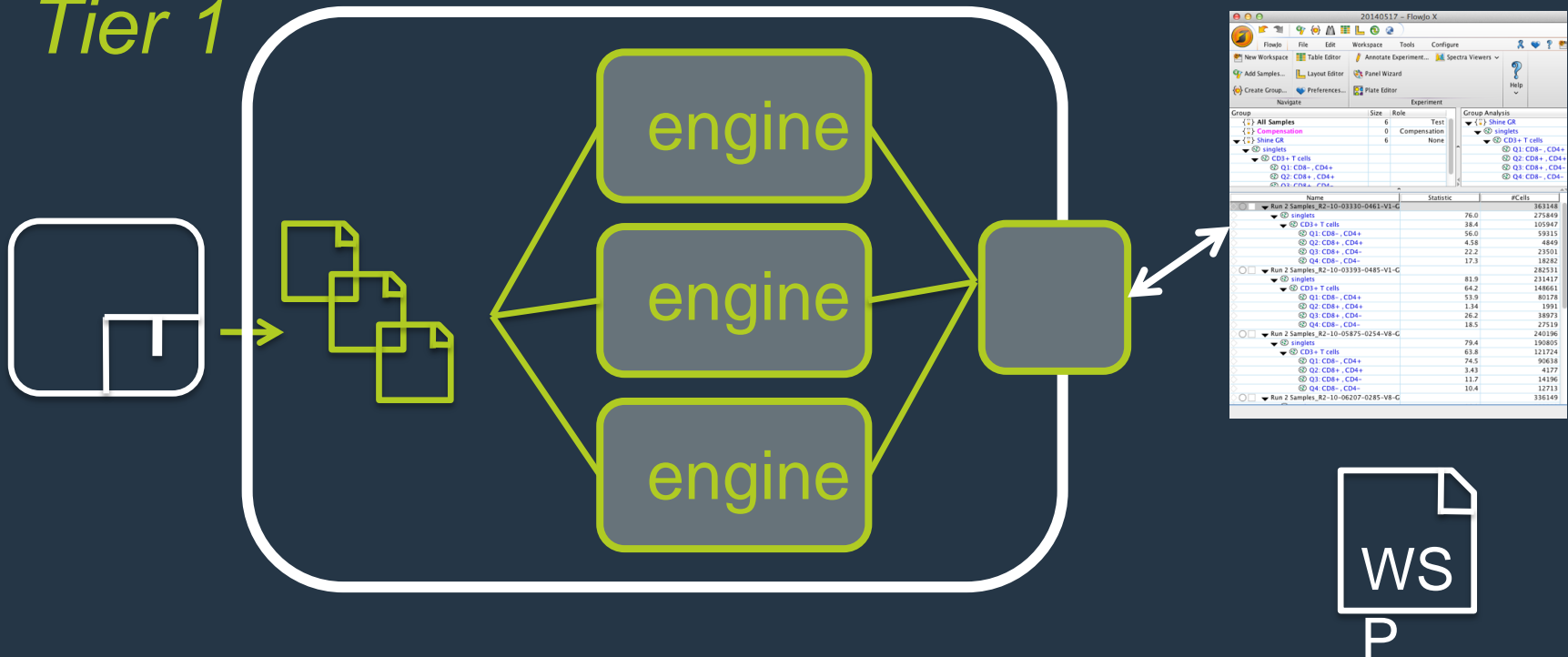
- Installed on acquisition computer
- Drag-and-drop, select, or set watch folder
 - Specify Server(s)
 - Calculate Checksums
 - Generate Manifest
 - Select pipeline
 - Package ACS



Extending the capabilities of FlowJo

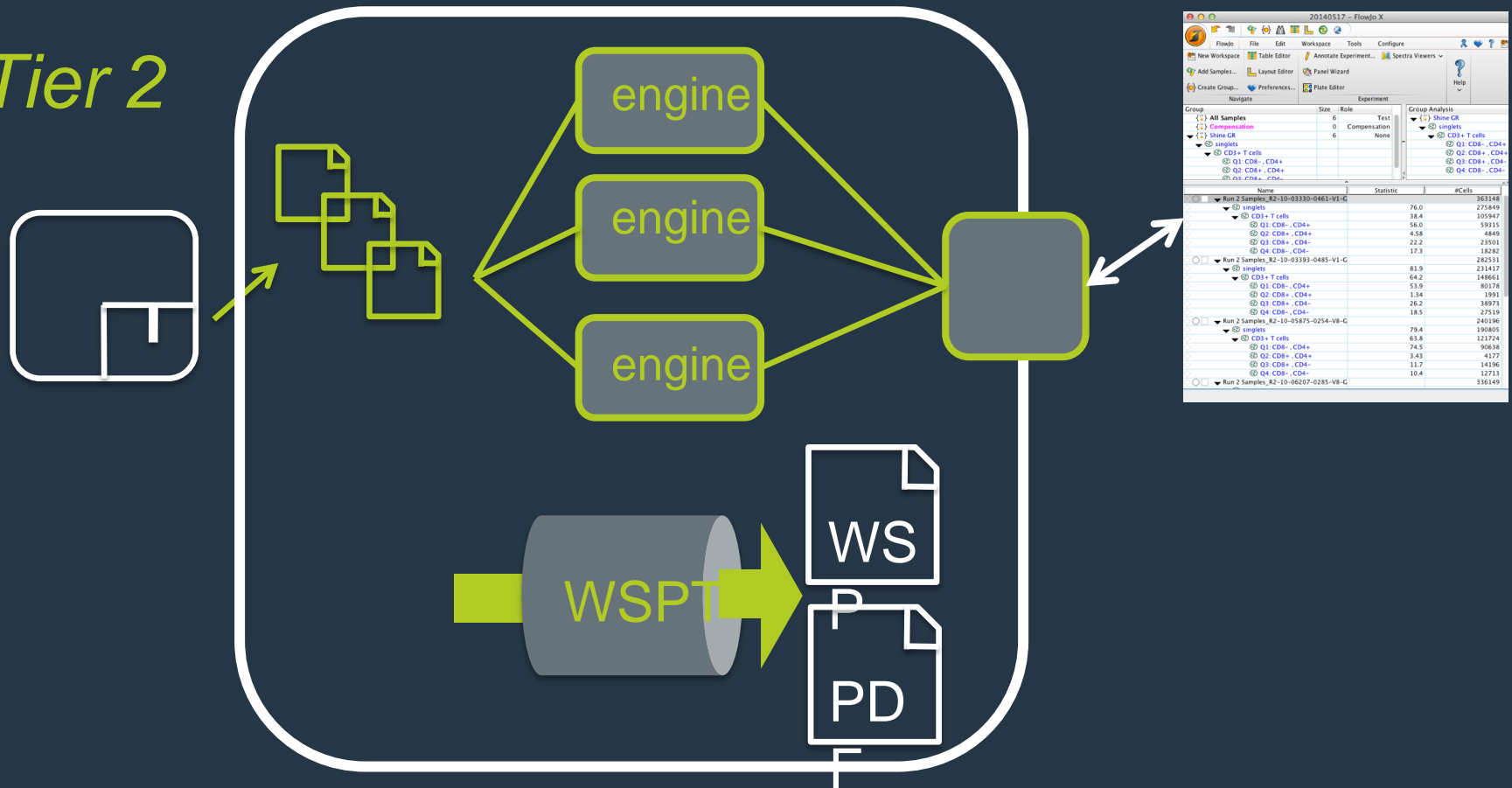
- High performance engines on server, proximal to data
- Can explore and use clustering tools
- Integrates with LIMS / DB
- Familiar, intuitive interface
- Seamless loading & saving
- Linked to existing license

Tier 1



- FlowJo Server calculation engines for analysis of FCS data files.
- Users load & manipulate server-based data files in a FlowJo workspace, the same as if the data were stored on the local computer.
- User authorized by FlowJo's existing site license system (FLS)

Tier 2



- Creation, saving, and execution of FlowJo protocols and templates on the server, as well as browsing and opening previously saved workspaces and generated reports.

Tier 2

FlowJo Server User: fjsadmin () HWA not authorized Lab: [dropdown]

[Run Library](#) [Download](#) [Sample Quality](#) [All Graphs](#) [ACS](#) [Delete Wap](#) [Generate Wap](#)

[Logout](#) [Admin Page](#)

Protocols / Templates	Protocol/Template Info	Workspace Info																																																																																																																																																																								
<ul style="list-style-type: none">AllfilesAllfilesTest108aCompTestNordisk6CompTestNordisk8NeuroShineCTPBMC.Analysis.fullPBMC.AnalysisPBMC.Analysis_FMPrepro_for_LymphocytesAntigEGateReportAntigEQ2StatsReportsAntigERreportQ2Stats	Contains Groups: [AARD, Eval Samples, HighDead, Run Samples] Has Layouts: [Generated Comp Report] Has Tables: [CD4CD8 Ratio]	Data Folder: (141 samples) Date Created: Sat, 17 May 2014 10:36:31 Created by: fjsadmin Id: NeuroShineCT.1400348164393 History: Batched on Sat, May 17, 2014 10:36:31 PDT by fjsadmin Run <i>NeuroShineCTLive</i> on Sat, May 17, 2014 10:36:38 PDT by fjsadmin																																																																																																																																																																								
Workspaces	Reports	Preview																																																																																																																																																																								
<ul style="list-style-type: none">NeuroShineCT (fjsadmin Sat, 17 May 2014 10:36:31)NeuroShineCT (fjsadmin Sun, 18 May 2014 06:42:11)NeuroShineCT (fjsadmin Sun, 18 May 2014 09:19:53)NeuroShineCT (fjsadmin Tue, 3 Jun 2014 14:17:21)NeuroShineCT (fjsadmin Tue, 17 Jun 2014 12:12:49)NeuroShineCT (Mike_Stadnisky Tue, 1 Jul 2014 16:01:15)NeuroShineCT (Mike_Stadnisky Tue, 1 Jul 2014 16:04:32)NeuroShineCT (Mike_Stadnisky Wed, 2 Jul 2014 08:29:22)NeuroShineCT (Mike_Stadnisky Wed, 2 Jul 2014 09:59:32)NeuroShineCT (Nick_Ostrout Thu, 10 Jul 2014 10:23:58)	CD4CD8 Ratio.html CompensationMatrix.xml NeuroShineCT.1400348164393.Generated_Comp_Report.pdf SampleQualityInfo.csv	<table border="1"><thead><tr><th></th><th>CD4+ cells</th><th>CD8+ cells</th><th>CD4/CD8 Ratio</th></tr></thead><tbody><tr><td>Block 1 Sample_001121101-V11-OR-01</td><td>783</td><td>172</td><td>4.55</td></tr><tr><td>Block 1 Sample_00120905-101-V11-OR-01</td><td>812</td><td>413</td><td>1.92</td></tr><tr><td>Block 1 Sample_00120912-101-V11-OR-01</td><td>815</td><td>147</td><td>5.54</td></tr><tr><td>Block 1 Sample_00110007-101-V11-OR-01</td><td>821</td><td>122</td><td>6.73</td></tr><tr><td>Block 1 Sample_00112115-110-V11-OR-01</td><td>818</td><td>313</td><td>2.61</td></tr><tr><td>Block 1 Sample_00110009-101-V11-OR-01</td><td>781</td><td>261</td><td>2.99</td></tr><tr><td>Block 1 Sample_00110010-101-V11-OR-01</td><td>781</td><td>261</td><td>2.99</td></tr><tr><td>Block 1 Sample_00120916-101-V11-OR-01</td><td>861</td><td>119</td><td>7.24</td></tr><tr><td>Block 1 Sample_00110011-101-V11-OR-01</td><td>781</td><td>154</td><td>5.07</td></tr><tr><td>Block 1 Sample_00111416-110-V11-OR-01</td><td>783</td><td>111</td><td>7.05</td></tr><tr><td>Block 1 Sample_00120921-110-V11-OR-01</td><td>821</td><td>271</td><td>3.03</td></tr><tr><td>Block 1 Sample_00110008-101-V11-OR-01</td><td>781</td><td>261</td><td>2.99</td></tr><tr><td>Block 1 Sample_00110012-110-V11-OR-01</td><td>841</td><td>161</td><td>5.22</td></tr><tr><td>Block 1 Sample_00110013-110-V11-OR-01</td><td>841</td><td>161</td><td>5.22</td></tr><tr><td>Block 1 Sample_00110014-110-V11-OR-01</td><td>841</td><td>161</td><td>5.22</td></tr><tr><td>Block 1 Sample_00110015-110-V11-OR-01</td><td>841</td><td>161</td><td>5.22</td></tr><tr><td>Block 1 Sample_00110016-110-V11-OR-01</td><td>841</td><td>161</td><td>5.22</td></tr><tr><td>Block 1 Sample_00110017-110-V11-OR-01</td><td>841</td><td>161</td><td>5.22</td></tr><tr><td>Block 1 Sample_00110018-110-V11-OR-01</td><td>841</td><td>161</td><td>5.22</td></tr><tr><td>Block 1 Sample_00110019-110-V11-OR-01</td><td>841</td><td>161</td><td>5.22</td></tr><tr><td>Block 1 Sample_00110020-110-V11-OR-01</td><td>841</td><td>161</td><td>5.22</td></tr><tr><td>Block 1 Sample_00110021-110-V11-OR-01</td><td>841</td><td>161</td><td>5.22</td></tr><tr><td>Block 1 Sample_00110022-110-V11-OR-01</td><td>841</td><td>161</td><td>5.22</td></tr><tr><td>Block 1 Sample_00110023-110-V11-OR-01</td><td>841</td><td>161</td><td>5.22</td></tr><tr><td>Block 1 Sample_00110024-110-V11-OR-01</td><td>841</td><td>161</td><td>5.22</td></tr><tr><td>Block 1 Sample_00110025-110-V11-OR-01</td><td>841</td><td>161</td><td>5.22</td></tr><tr><td>Block 1 Sample_00110026-110-V11-OR-01</td><td>841</td><td>161</td><td>5.22</td></tr><tr><td>Block 1 Sample_00110027-110-V11-OR-01</td><td>841</td><td>161</td><td>5.22</td></tr><tr><td>Block 1 Sample_00110028-110-V11-OR-01</td><td>841</td><td>161</td><td>5.22</td></tr><tr><td>Block 1 Sample_00110029-110-V11-OR-01</td><td>841</td><td>161</td><td>5.22</td></tr><tr><td>Block 1 Sample_00110030-110-V11-OR-01</td><td>841</td><td>161</td><td>5.22</td></tr><tr><td>Block 1 Sample_00110031-110-V11-OR-01</td><td>841</td><td>161</td><td>5.22</td></tr><tr><td>Block 1 Sample_00110032-110-V11-OR-01</td><td>841</td><td>161</td><td>5.22</td></tr><tr><td>Block 1 Sample_00110033-110-V11-OR-01</td><td>841</td><td>161</td><td>5.22</td></tr><tr><td>Block 1 Sample_00110034-110-V11-OR-01</td><td>841</td><td>161</td><td>5.22</td></tr><tr><td>Block 1 Sample_00110035-110-V11-OR-01</td><td>841</td><td>161</td><td>5.22</td></tr><tr><td>Block 1 Sample_00110036-110-V11-OR-01</td><td>841</td><td>161</td><td>5.22</td></tr><tr><td>Block 1 Sample_00110037-110-V11-OR-01</td><td>841</td><td>161</td><td>5.22</td></tr><tr><td>Block 1 Sample_00110038-110-V11-OR-01</td><td>841</td><td>161</td><td>5.22</td></tr><tr><td>Block 1 Sample_00110039-110-V11-OR-01</td><td>841</td><td>161</td><td>5.22</td></tr><tr><td>Block 1 Sample_00110040-110-V11-OR-01</td><td>841</td><td>161</td><td>5.22</td></tr></tbody></table>		CD4+ cells	CD8+ cells	CD4/CD8 Ratio	Block 1 Sample_001121101-V11-OR-01	783	172	4.55	Block 1 Sample_00120905-101-V11-OR-01	812	413	1.92	Block 1 Sample_00120912-101-V11-OR-01	815	147	5.54	Block 1 Sample_00110007-101-V11-OR-01	821	122	6.73	Block 1 Sample_00112115-110-V11-OR-01	818	313	2.61	Block 1 Sample_00110009-101-V11-OR-01	781	261	2.99	Block 1 Sample_00110010-101-V11-OR-01	781	261	2.99	Block 1 Sample_00120916-101-V11-OR-01	861	119	7.24	Block 1 Sample_00110011-101-V11-OR-01	781	154	5.07	Block 1 Sample_00111416-110-V11-OR-01	783	111	7.05	Block 1 Sample_00120921-110-V11-OR-01	821	271	3.03	Block 1 Sample_00110008-101-V11-OR-01	781	261	2.99	Block 1 Sample_00110012-110-V11-OR-01	841	161	5.22	Block 1 Sample_00110013-110-V11-OR-01	841	161	5.22	Block 1 Sample_00110014-110-V11-OR-01	841	161	5.22	Block 1 Sample_00110015-110-V11-OR-01	841	161	5.22	Block 1 Sample_00110016-110-V11-OR-01	841	161	5.22	Block 1 Sample_00110017-110-V11-OR-01	841	161	5.22	Block 1 Sample_00110018-110-V11-OR-01	841	161	5.22	Block 1 Sample_00110019-110-V11-OR-01	841	161	5.22	Block 1 Sample_00110020-110-V11-OR-01	841	161	5.22	Block 1 Sample_00110021-110-V11-OR-01	841	161	5.22	Block 1 Sample_00110022-110-V11-OR-01	841	161	5.22	Block 1 Sample_00110023-110-V11-OR-01	841	161	5.22	Block 1 Sample_00110024-110-V11-OR-01	841	161	5.22	Block 1 Sample_00110025-110-V11-OR-01	841	161	5.22	Block 1 Sample_00110026-110-V11-OR-01	841	161	5.22	Block 1 Sample_00110027-110-V11-OR-01	841	161	5.22	Block 1 Sample_00110028-110-V11-OR-01	841	161	5.22	Block 1 Sample_00110029-110-V11-OR-01	841	161	5.22	Block 1 Sample_00110030-110-V11-OR-01	841	161	5.22	Block 1 Sample_00110031-110-V11-OR-01	841	161	5.22	Block 1 Sample_00110032-110-V11-OR-01	841	161	5.22	Block 1 Sample_00110033-110-V11-OR-01	841	161	5.22	Block 1 Sample_00110034-110-V11-OR-01	841	161	5.22	Block 1 Sample_00110035-110-V11-OR-01	841	161	5.22	Block 1 Sample_00110036-110-V11-OR-01	841	161	5.22	Block 1 Sample_00110037-110-V11-OR-01	841	161	5.22	Block 1 Sample_00110038-110-V11-OR-01	841	161	5.22	Block 1 Sample_00110039-110-V11-OR-01	841	161	5.22	Block 1 Sample_00110040-110-V11-OR-01	841	161	5.22
	CD4+ cells	CD8+ cells	CD4/CD8 Ratio																																																																																																																																																																							
Block 1 Sample_001121101-V11-OR-01	783	172	4.55																																																																																																																																																																							
Block 1 Sample_00120905-101-V11-OR-01	812	413	1.92																																																																																																																																																																							
Block 1 Sample_00120912-101-V11-OR-01	815	147	5.54																																																																																																																																																																							
Block 1 Sample_00110007-101-V11-OR-01	821	122	6.73																																																																																																																																																																							
Block 1 Sample_00112115-110-V11-OR-01	818	313	2.61																																																																																																																																																																							
Block 1 Sample_00110009-101-V11-OR-01	781	261	2.99																																																																																																																																																																							
Block 1 Sample_00110010-101-V11-OR-01	781	261	2.99																																																																																																																																																																							
Block 1 Sample_00120916-101-V11-OR-01	861	119	7.24																																																																																																																																																																							
Block 1 Sample_00110011-101-V11-OR-01	781	154	5.07																																																																																																																																																																							
Block 1 Sample_00111416-110-V11-OR-01	783	111	7.05																																																																																																																																																																							
Block 1 Sample_00120921-110-V11-OR-01	821	271	3.03																																																																																																																																																																							
Block 1 Sample_00110008-101-V11-OR-01	781	261	2.99																																																																																																																																																																							
Block 1 Sample_00110012-110-V11-OR-01	841	161	5.22																																																																																																																																																																							
Block 1 Sample_00110013-110-V11-OR-01	841	161	5.22																																																																																																																																																																							
Block 1 Sample_00110014-110-V11-OR-01	841	161	5.22																																																																																																																																																																							
Block 1 Sample_00110015-110-V11-OR-01	841	161	5.22																																																																																																																																																																							
Block 1 Sample_00110016-110-V11-OR-01	841	161	5.22																																																																																																																																																																							
Block 1 Sample_00110017-110-V11-OR-01	841	161	5.22																																																																																																																																																																							
Block 1 Sample_00110018-110-V11-OR-01	841	161	5.22																																																																																																																																																																							
Block 1 Sample_00110019-110-V11-OR-01	841	161	5.22																																																																																																																																																																							
Block 1 Sample_00110020-110-V11-OR-01	841	161	5.22																																																																																																																																																																							
Block 1 Sample_00110021-110-V11-OR-01	841	161	5.22																																																																																																																																																																							
Block 1 Sample_00110022-110-V11-OR-01	841	161	5.22																																																																																																																																																																							
Block 1 Sample_00110023-110-V11-OR-01	841	161	5.22																																																																																																																																																																							
Block 1 Sample_00110024-110-V11-OR-01	841	161	5.22																																																																																																																																																																							
Block 1 Sample_00110025-110-V11-OR-01	841	161	5.22																																																																																																																																																																							
Block 1 Sample_00110026-110-V11-OR-01	841	161	5.22																																																																																																																																																																							
Block 1 Sample_00110027-110-V11-OR-01	841	161	5.22																																																																																																																																																																							
Block 1 Sample_00110028-110-V11-OR-01	841	161	5.22																																																																																																																																																																							
Block 1 Sample_00110029-110-V11-OR-01	841	161	5.22																																																																																																																																																																							
Block 1 Sample_00110030-110-V11-OR-01	841	161	5.22																																																																																																																																																																							
Block 1 Sample_00110031-110-V11-OR-01	841	161	5.22																																																																																																																																																																							
Block 1 Sample_00110032-110-V11-OR-01	841	161	5.22																																																																																																																																																																							
Block 1 Sample_00110033-110-V11-OR-01	841	161	5.22																																																																																																																																																																							
Block 1 Sample_00110034-110-V11-OR-01	841	161	5.22																																																																																																																																																																							
Block 1 Sample_00110035-110-V11-OR-01	841	161	5.22																																																																																																																																																																							
Block 1 Sample_00110036-110-V11-OR-01	841	161	5.22																																																																																																																																																																							
Block 1 Sample_00110037-110-V11-OR-01	841	161	5.22																																																																																																																																																																							
Block 1 Sample_00110038-110-V11-OR-01	841	161	5.22																																																																																																																																																																							
Block 1 Sample_00110039-110-V11-OR-01	841	161	5.22																																																																																																																																																																							
Block 1 Sample_00110040-110-V11-OR-01	841	161	5.22																																																																																																																																																																							

- Web browser view of library of templates, protocols & data.
- Organizes the files on the server, keeps records of commands and tasks invoked by users, and provides administrative functions to search and archive the history of activity.

Tier 3

- **Database Integration:** Module that updates specified table in SQL DB
- **LIMS Integration:** invoke custom software modules e.g. to query the LIM system for data files to analyze.