

Building Life Safety

This course is about life safety in buildings – preventing possible accidents or deaths from occurring in YOUR building.

Just how safe is your building? Close your eyes. Envision it without people. Mentally walk through the halls. Go through all the exits. What do you see?

What's in Your Area?

Are your hallways and exits clear and uncluttered with unobstructed exits?



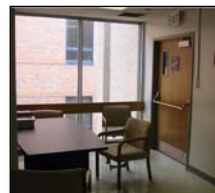
Or are your hallways lined with various machines and other equipment?



Are there objects like boxes or barrels obstructing the hallways and exits?



Are there conference rooms or break areas that are obstructing the hallways and possibly the exits?



Building Safety Violations

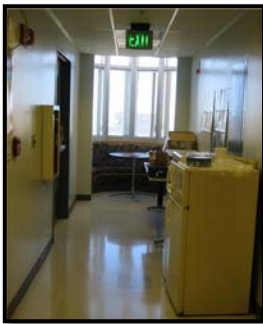
This course will show you some common life safety problems for you to keep in mind on your next walk around.

Hallways

Electrically powered equipment such as refrigerators, copiers, and others CANNOT be stored or permanently operated in hallways.

First, it is a violation of the Fire Code. There are laws that prohibit the obstruction of hallways and exits. Make sure they stay clear.

Second, it's a maze for people navigating the hall. Can you imagine trying to get through here when it's filled with smoke and fire? Or try to imagine walking around these things if chemical fumes from a spill are filling the hall.



Machines in Hall

Most of UAB's inside building space is taken up by classrooms, research labs, administrative areas, patient areas, and offices. A break area is a luxury that few departments have in their buildings. However, hallways should NEVER be used as break areas or patient waiting areas.

And while a mini-refrigerator for employees' use is a nice addition, it should NOT be located in a hallway obstructing exit access.

Hazards in the Hall

If your area handles any type of hazardous or medical waste, it must be stored in an appropriate storage area – NOT the corridor.



Blocked Safety Showers



This shower was originally installed in this ceiling for a reason. Nothing should obstruct a person's access to it.

Safety showers and eye wash stations should always be immediately accessible.

Hallway Libraries

This place has two major violations. First, the bookcase is obstructing the door.

Second, the fire extinguisher is on the floor and not properly mounted next to the door. When moving and placing furniture, think safety first – YOUR safety and that of others around you.



Happy Holidays!

There's nothing wrong with celebrating Christmas. However, it should NOT be celebrated in the halls or obstructing exit doors. Decorate the offices, just not the halls.

Signage in the Halls

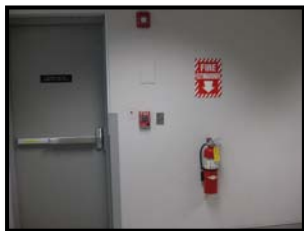
There's nothing wrong with a few signs in the halls, but when things like homecoming and other big events roll around, we tend to want to let the world know and use the BIG paper. Wall coverings, such as posters or decorations, must be flame retardant or cover less than 10% of the surface area of the wall.



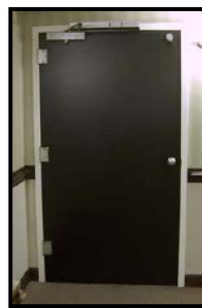
Signage on bulletin boards, elevator areas, doorways, in labs, and other areas should be kept to a minimum. Remove those out-of-date ads, flyers, and posters often.

Exits

Exit Routes consist of three parts:



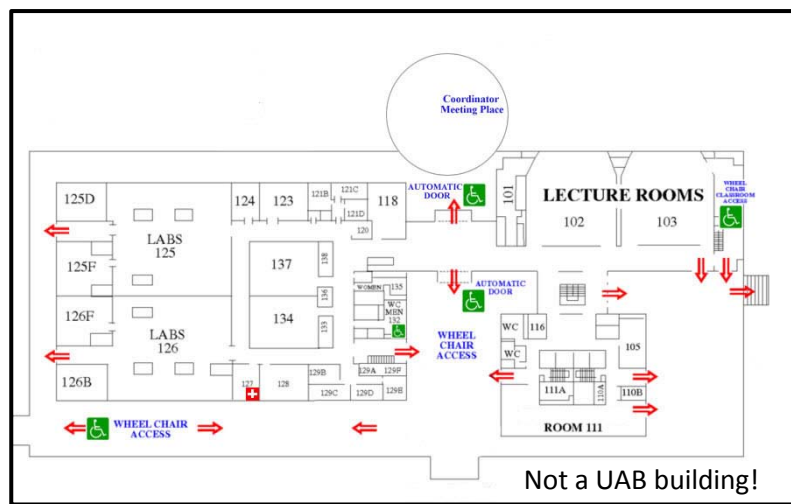
The exit access is a part of a route that leads to a way out. The example shown here is a stairwell.



The exit is the part of a route that is generally separated from other areas to provide a protected way of travel to the outside.



The exit discharge is the part of a route that leads directly outside or to a street, walkway, refuge area, public way, or open space with access to the outside.



During an emergency, exit routes become lifelines. Know where the exits are located. Make sure everyone knows, and make sure the exit routes are clear at all times.

Fire Doors



Fire doors are rated to withstand a fire for a specified amount of time. This delays the spread of smoke and/or fire and gives people extra time to escape.

Fire doors are self-closing when released. They may have a magnetic hold-open device.

A fire door should NEVER be propped open for any reason. They must have clear access at all times.

Fire doors are usually located in stairwells, labs, office suites, corridors and mechanical rooms. Some fire doors may be marked.

Consult with UAB Architecture & Engineering when replacing a fire door to assure code compliance.

Fire Door Open

Doors like this one are used to protect areas from lots of things. One of these is to keep people out who don't belong. Purses, money, credit cards, papers, and even cars have been stolen due to lack of security.

It is also a fire door. If it says keep it closed, then do it. The sign is there for a reason.





Security Doors

In a fire, stairwells with fire doors propped open act as chimneys allowing fresh air to reach the fire. This means that the smoke and fire will quickly spread to other floors.

Additionally, stairwells are considered refuge areas for persons with disabilities. Elevators will not work during a fire, so there may be someone depending on a stairwell as a safe place to await rescue.

If the stairwell is filled with smoke, it may be impossible to use as an exit route or a refuge area.

Exit Signs

Exit signs that are obstructed or burned out won't benefit anyone especially during an emergency. Make sure that all your exits signs are working properly before an emergency occurs. If you see an exit sign that is damaged or not working, report it to maintenance immediately.

The exit sign shown here shows the difference in how a working exit sign looks normally and in a smoke-filled hallway.



Waste Storage?

If you are waiting on a pickup from the Hazardous Materials Facility, a vendor, or recycling company, don't leave objects in the hallways for days. Move them out shortly before the pickup or put them in a designated storage area. You never know when people may need to exit the building immediately.

Building Managers and Supervisors Responsibilities

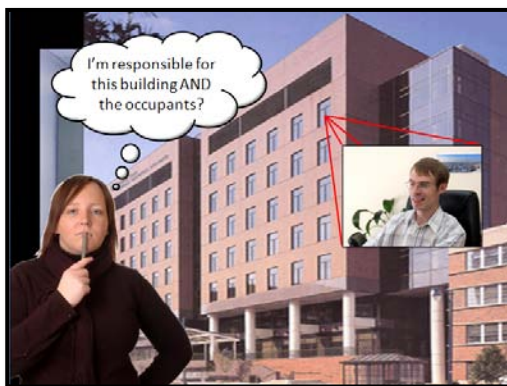
Everyone believes they could get out of their buildings with their eyes closed. Ok, here's your hall. It's like an extra storage room – bookcases, empty boxes, file cabinets, chairs, and other miscellaneous non-used items.

Now, here's your hall filled with smoke from a fire.



You and your co-workers are trying to exit the building, but you are blinded by the smoke. You and your co-workers are coughing, choking. Your eyes are watering.

Where's the exit? Boxes are falling and being kicked into your path. People are bumping into and falling over things. The fire is advancing. People are pushing – panicking. You have only seconds to exit before it's too late.



As a building administrator or department head, you have a responsibility to make sure that your building is safe for all its occupants.

Blocked Outside Exit

Exit discharge areas must be kept clear at all times. This "trash" should be put in its proper place!



Unwanted Barriers

Obstructed exits or exit routes cluttered with office equipment and supplies are potential fire hazards. Getting those in order can help in case of an emergency such as a fire.

But did you know that ceilings and floors can also serve as fire, smoke, and heat barriers? These must be kept clear at all times as well.



These items are stored too close to the ceiling. In an area without a sprinkler system, the fire code states that there must be a 24 inch clearance between the ceiling and stored items.

In areas with sprinkler systems, the fire code states that there must be an 18 inch clearance between stored items and the level of the sprinkler head. There's not 18 inches clearance here!

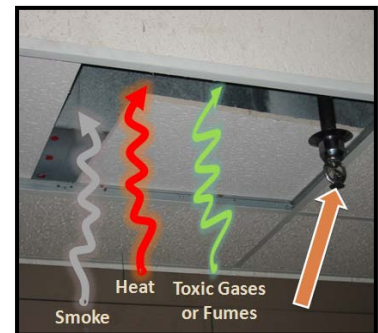


The eighteen inches is a continuous plane. You can't build a void around sprinkler heads and expect them to work. Call the Warehouse. Call the Hazardous Materials Facility for pickup. Call somebody to clean this mess up!

Ceiling Tiles

There are two problems with missing and/or displaced ceiling tiles.

1. The opening allows smoke, heat, and toxic gases to spread to other areas of the building.
2. The fire alarm/suppression system might be delayed. The open area will allow smoke and hot air to bypass the sprinkler head or smoke detector which will delay the system response. Burns, accidents, and deaths could be avoided by simply checking your ceiling tiles.





Chemicals in the Floor

Floors should be clear of clutter to prevent accidents and provide a path in case of an emergency especially a fire. This is not only a fire hazard, but a chemical one as well.



Heat, Flammables, & Combustibles

Flammable and combustible liquids must be stored in an approved, marked flammable storage cabinet.



In Case of Fire

Fire extinguishers, fire alarm pulls, audio visual fire alarms, and fire fighter connections are all part of the fire control system in your building.

They must remain accessible AND visible in order to be effective.

Fire Fighters

She needs to go in and fight the fire in your building – perhaps saving lives and valuable research data and equipment. This is what she sees obstructing her path. Who is fault is it when your work area goes up in flames?



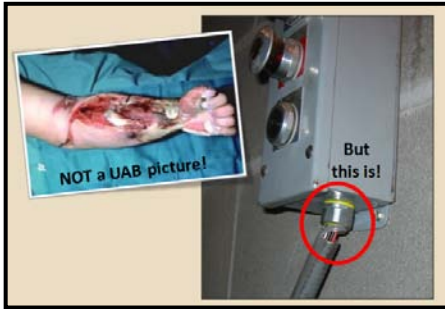
The Fire Extinguisher

The Fire Code requires that fire extinguishers must be visible and accessible at all times. Many UAB fire extinguishers are located near exit access areas. Do you know where the closest fire extinguisher is?

Fire extinguishers must be accessible at all times, conspicuously marked, and serviced regularly.

Pull Aim Squeeze Sweep (PASS)

UAB does NOT expect you to fight a fire UNLESS you are comfortable in doing so and know how to properly fight one. Occupational Health and Safety can provide training for employees. OH&S also posts PDF files on fire prevention information on their website.



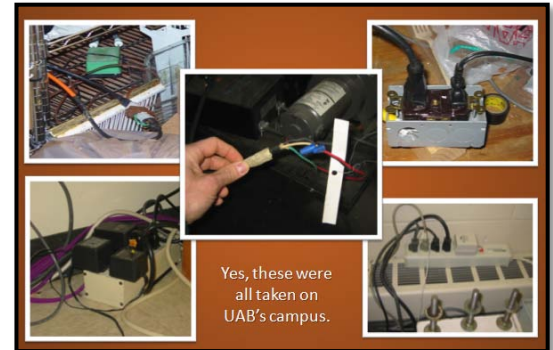
Basic Electrical Safety

If you see electrical equipment that needs re-wiring, call maintenance. Do NOT attempt to fix it yourself. This is just one example of what could happen if you have an electrical burn.

Overloaded & Rewired

Please don't try to re-wire electrical equipment or plug too many things into outlets. Call a UAB electrician if you need help. Improvising or making do with electrical equipment is like standing in a thunderstorm holding a lightning rod. Something is bound to happen.

We could quote you all the rules and regulations, but suffice it to say – don't use home extension cords or overload circuits. It's just too dangerous.



Call OH&S. They can help you with questions or who to contact.

Electrical Panels



In the event of an emergency, electrical panels must be immediately accessible so that power can be shut off quickly when necessary.

Regulations state that there should be nothing within 36 inches in front of an electrical panel.

The Checklist

This concludes the Building Life Safety Course. To receive credit for this course, conduct a walk-through of your building/area, and submit the completed [checklist](#) to EH&S. We strongly recommend that you do a walk-through annually.

Please send the completed checklist to:

Rob Emmons at:
campussafety@uab.edu