

## Directions to the HeartCode Room (JT 221) from 19<sup>th</sup> Street South Jefferson Towers Entrance:



Go up the steps.



Walk through both sets of double doors.

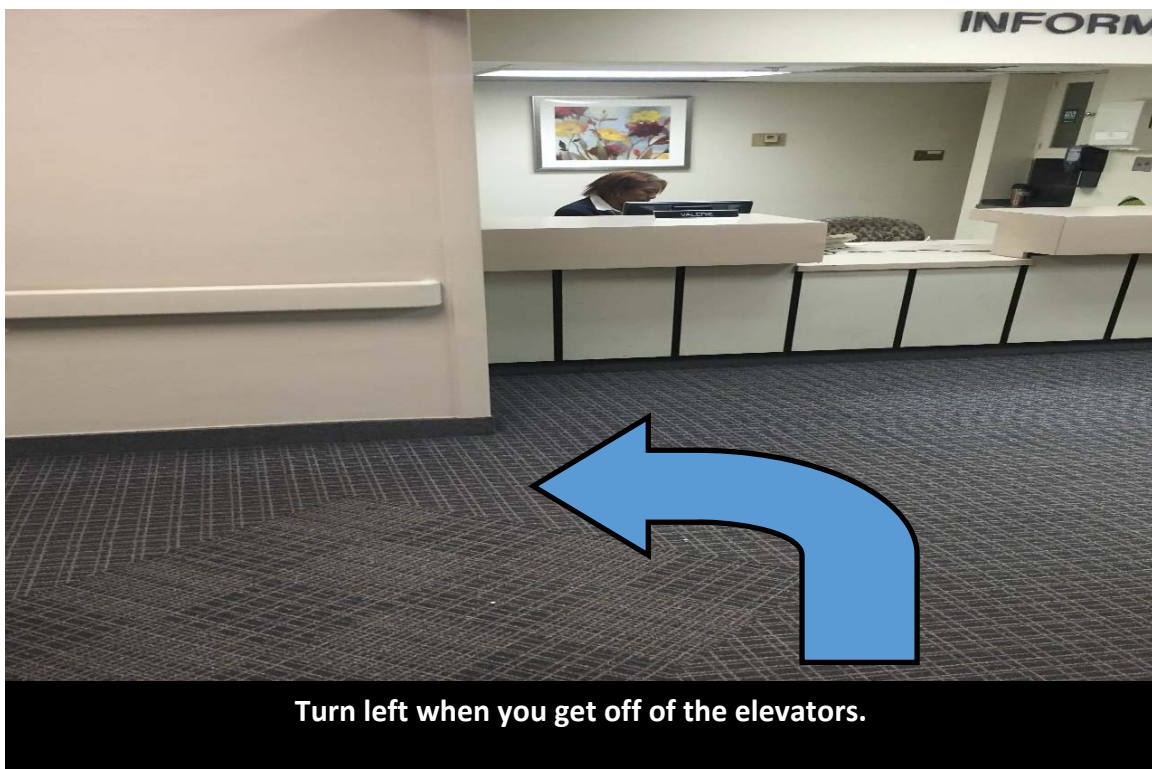


Enter the side room on the left with the elevators.



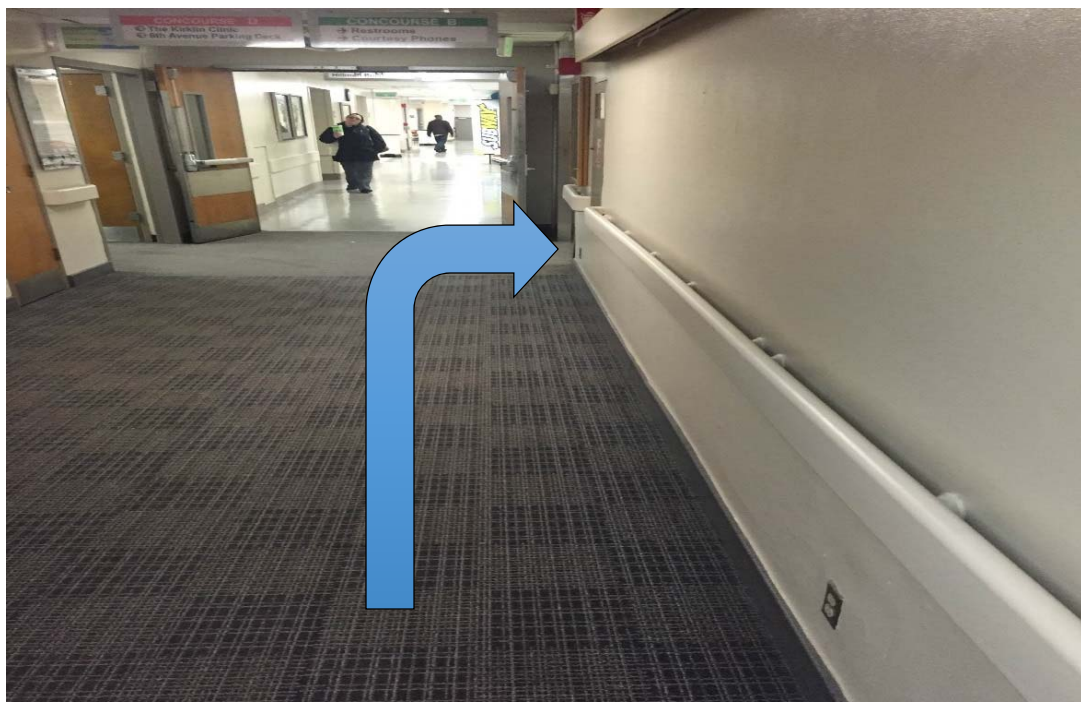
Press the up arrow on the elevators and go to the 2<sup>nd</sup> floor.







Walk down this hallway.



Continue down this hallway and make a right. If you see Subway, you've gone too far



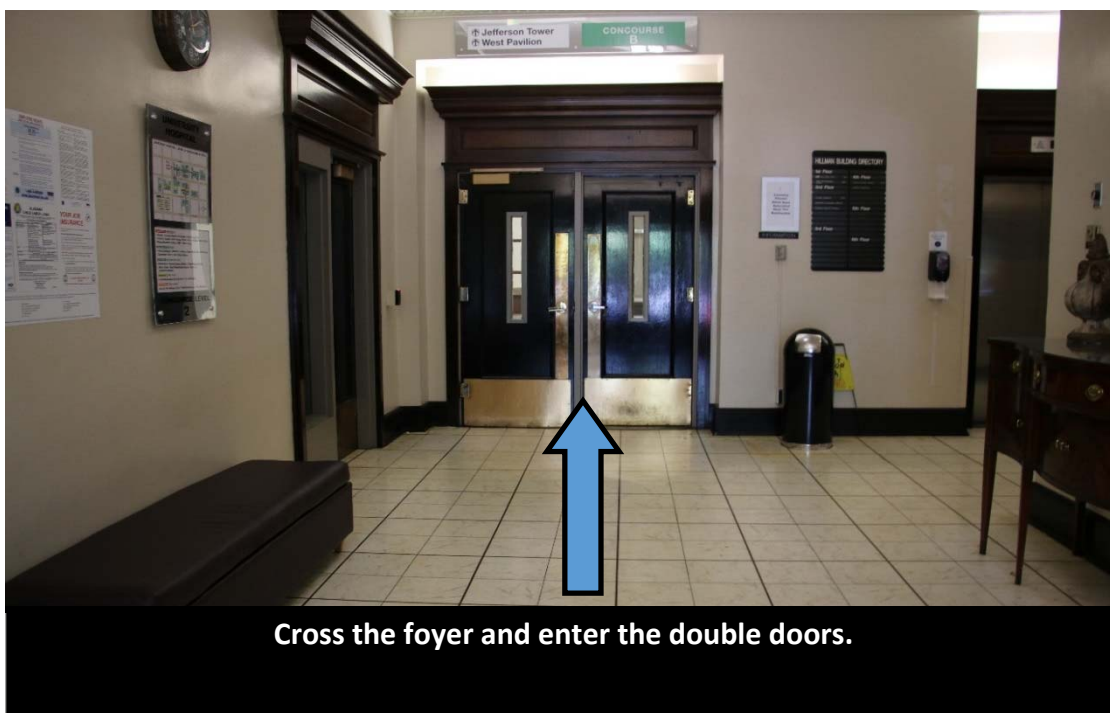


Once you make a right, you should be here.



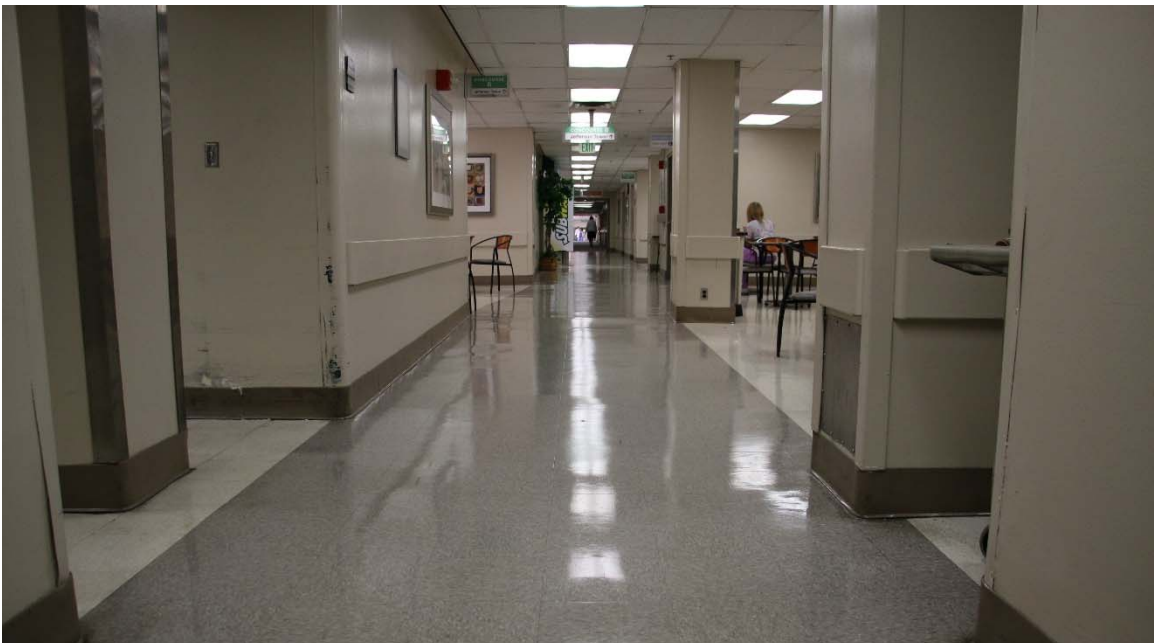
Look to your right and you should see this door to the HeartCode Room.

## Directions to the HeartCode Room (JT221) from the 20th St S Old Hillman Building Entrance:





Walk up the steps and through the double doors.



Continue down this hallway, passing Subway.





Turn left after the double doors.



Once you make a left, you should be here.



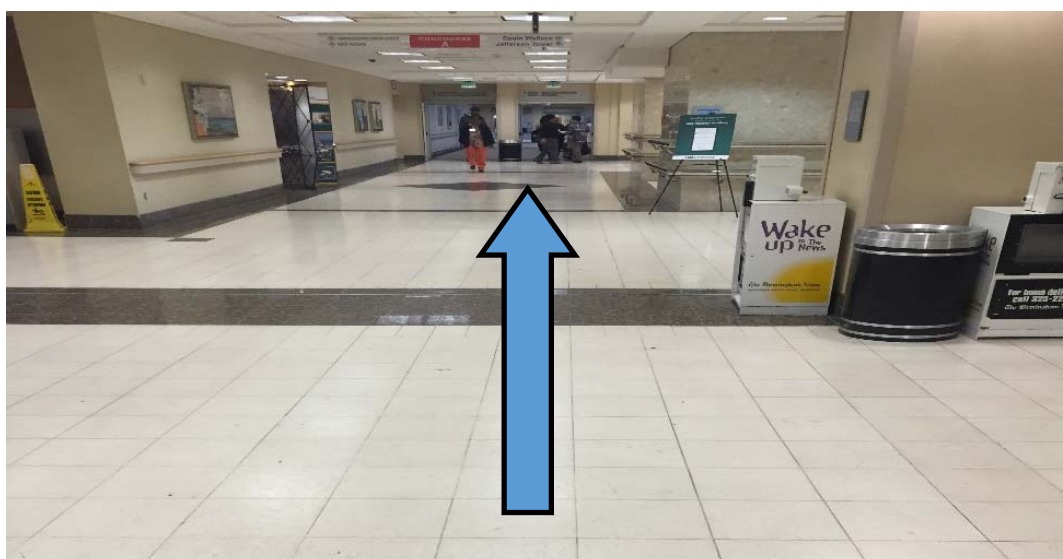


Look to your right and you should see this door to the HeartCode Room.

## Directions to the HeartCode Room (JT 221) from Information Desk in North Pavilion

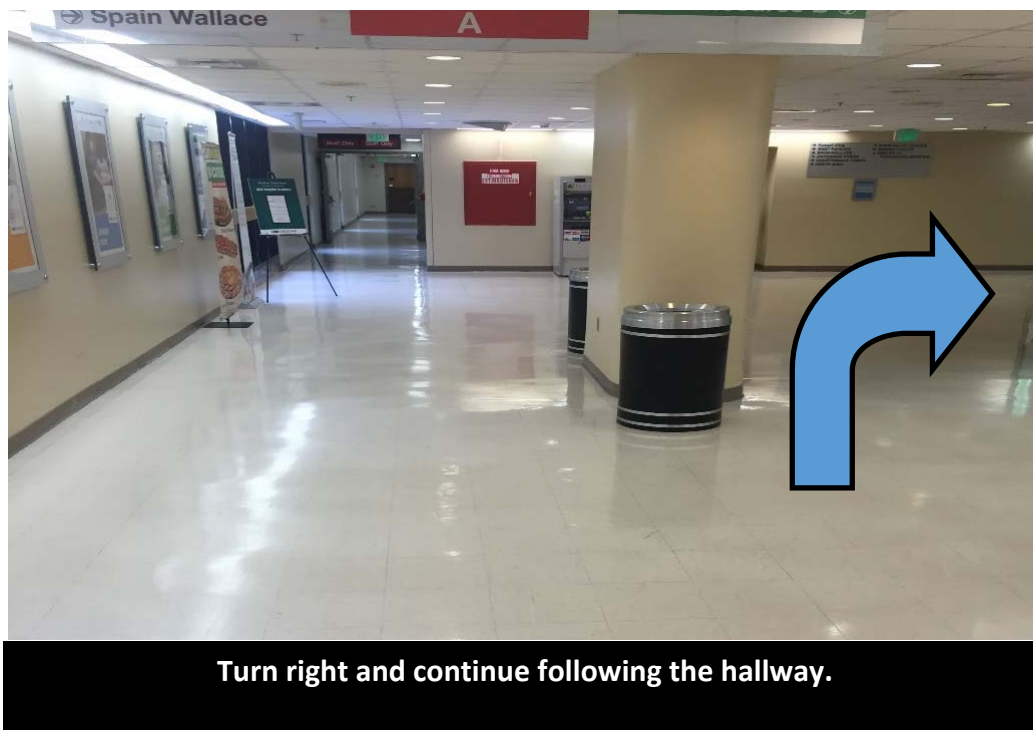
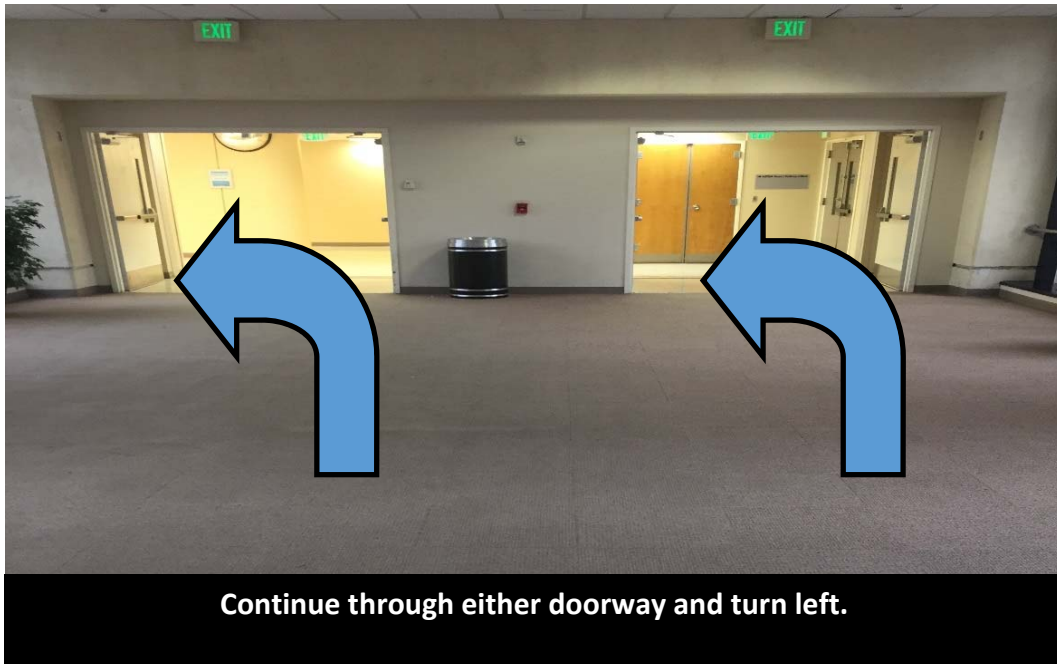


Facing the information desk, turn right.



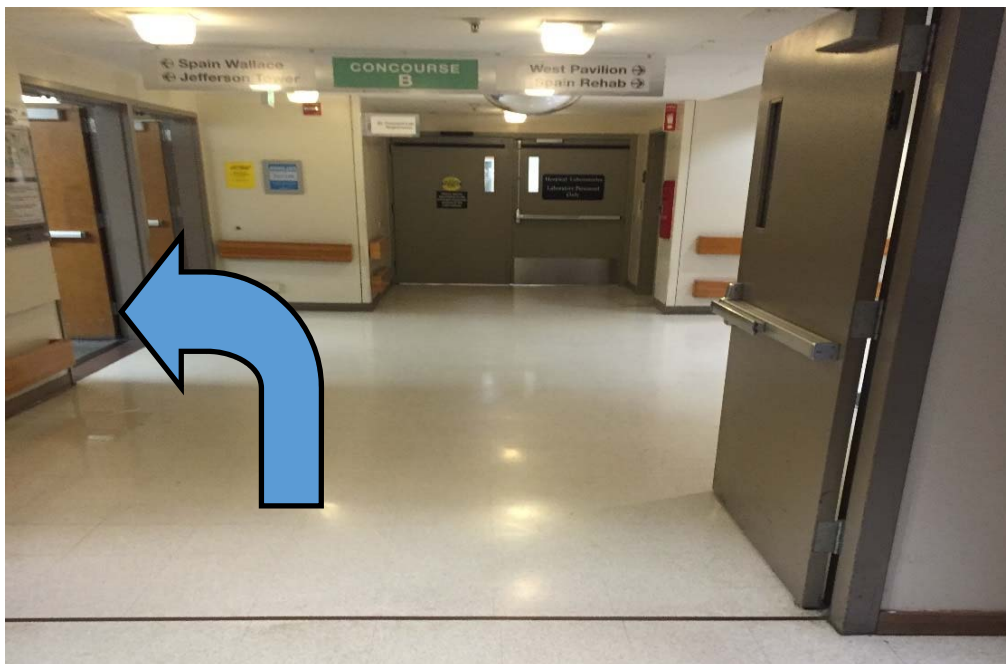
Walk down the hallway.







Walk down the hallway.



Turn left towards Jefferson Tower.

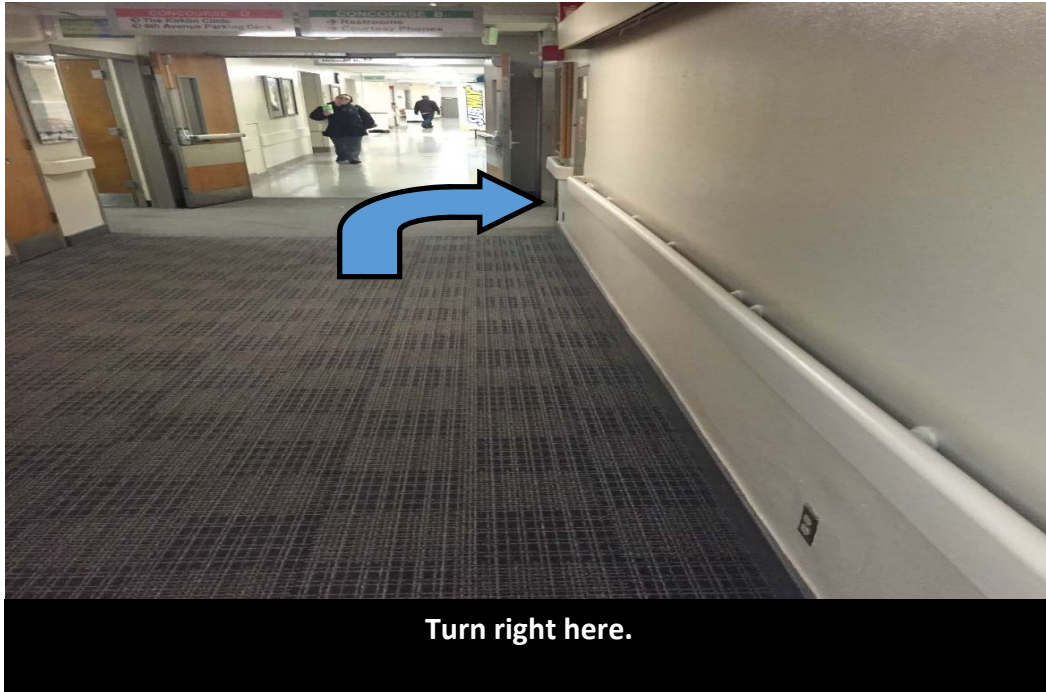




Walk down the hallway.



Continue walking down the hallway.







Look to your right and you should see this door to the HeartCode Room.