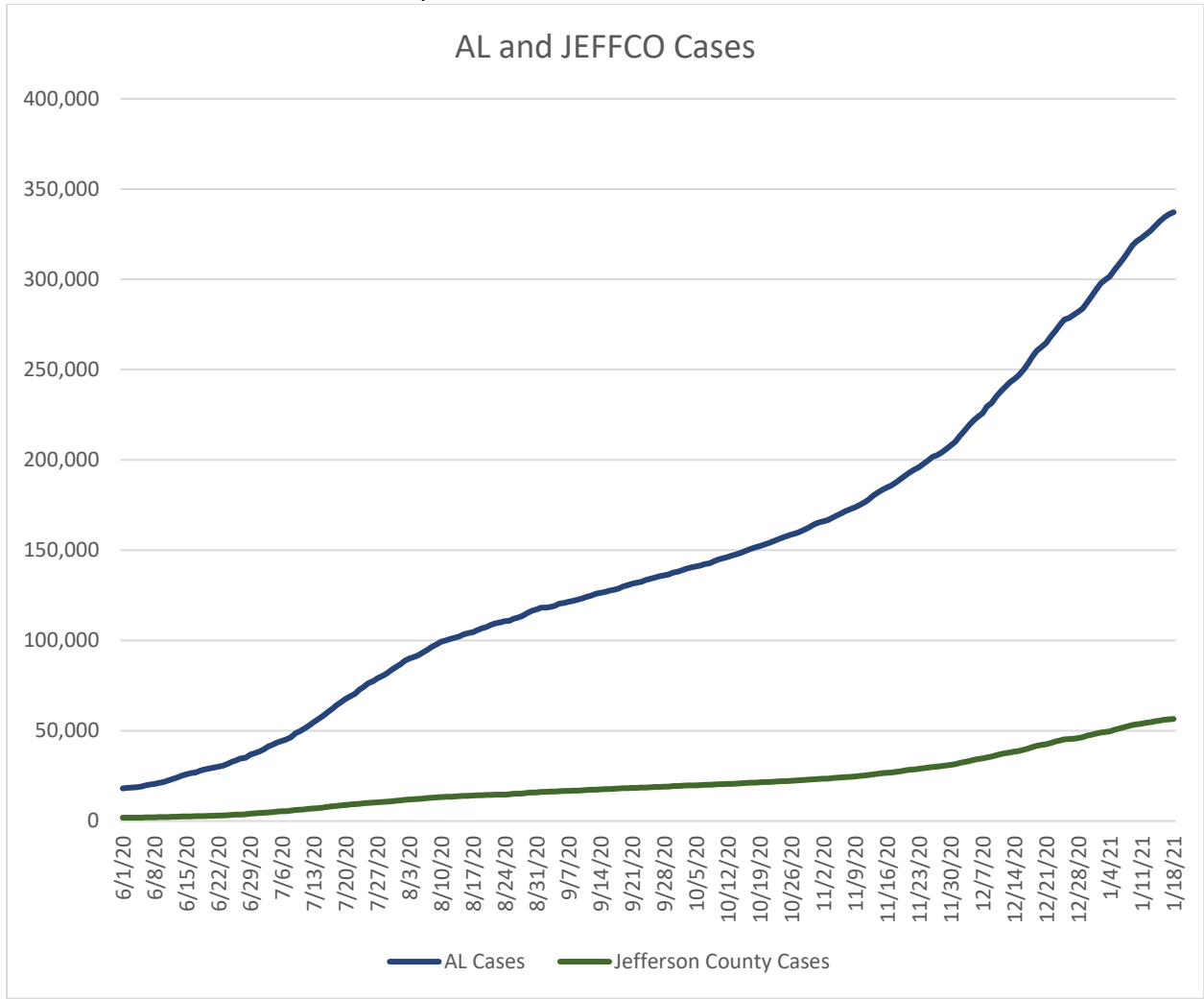
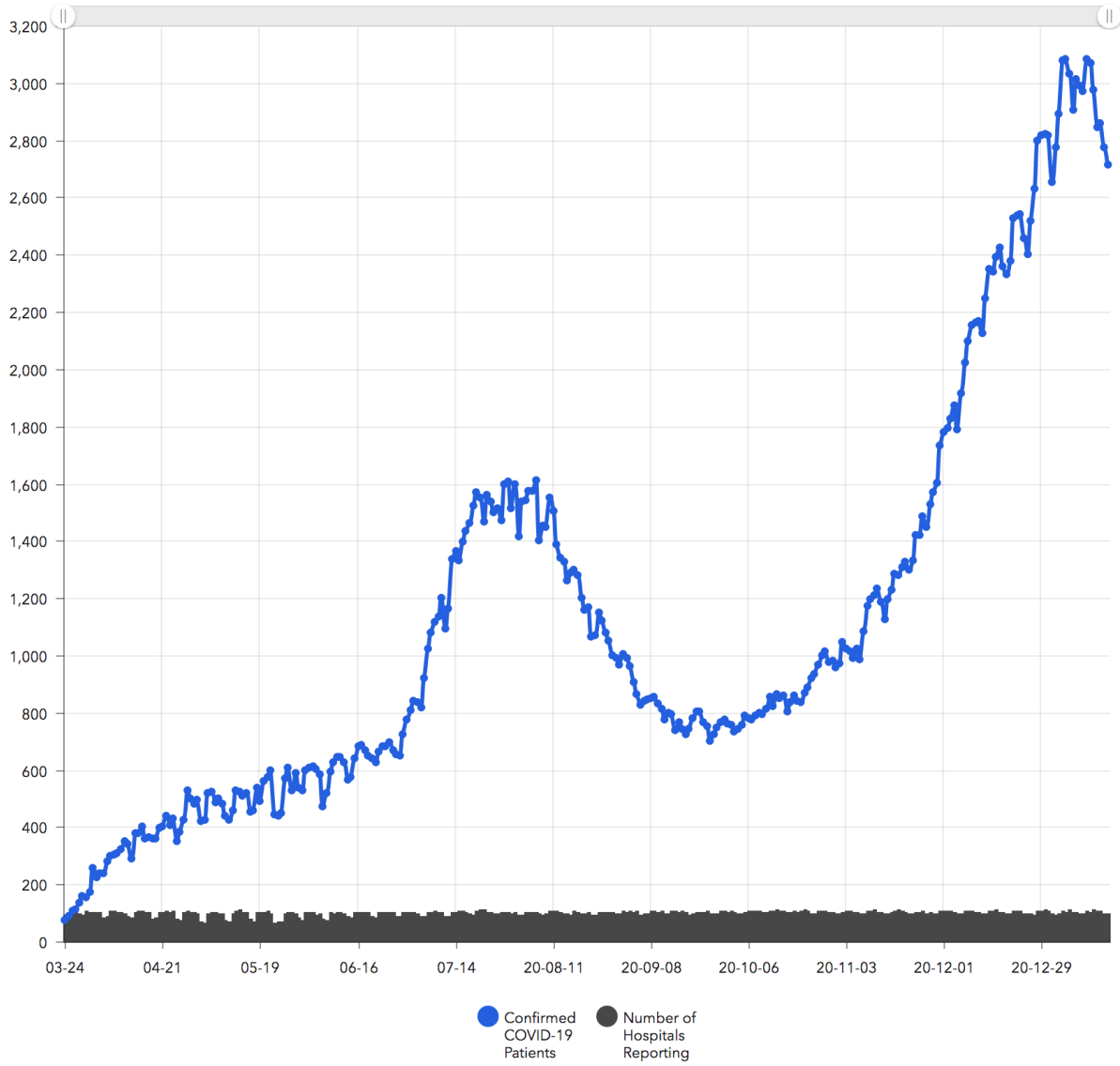


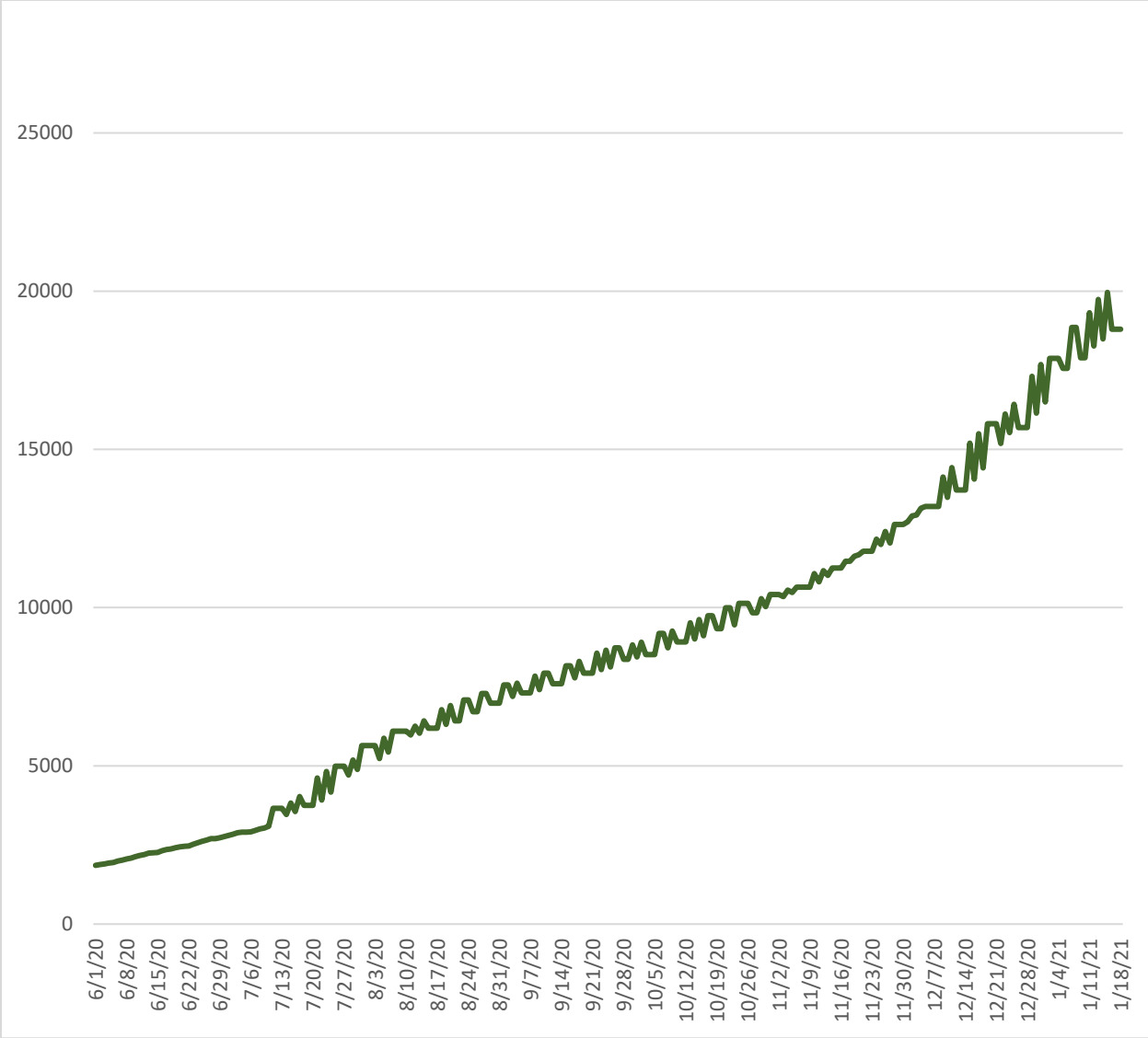
Updated 10:00 am on 1/18/2021



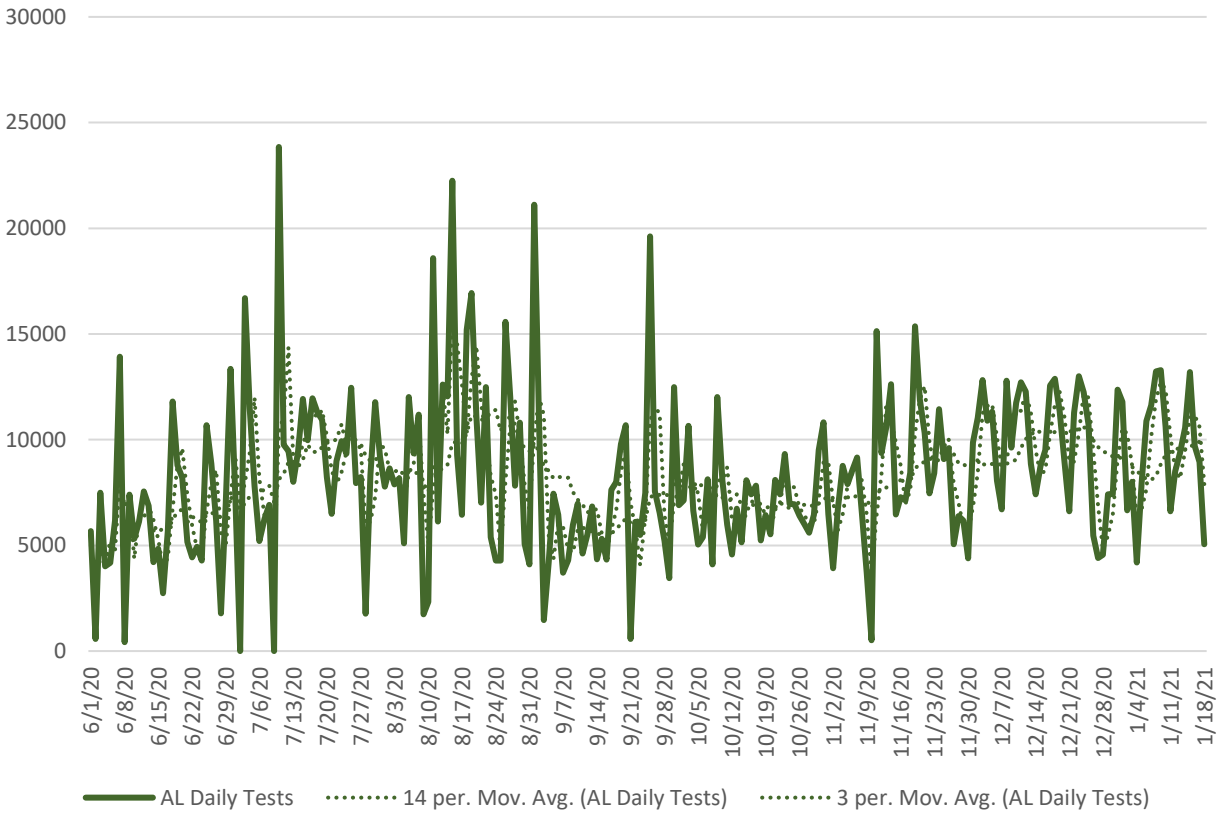
DAILY HOSPITALIZATIONS OF COVID-19 PATIENTS



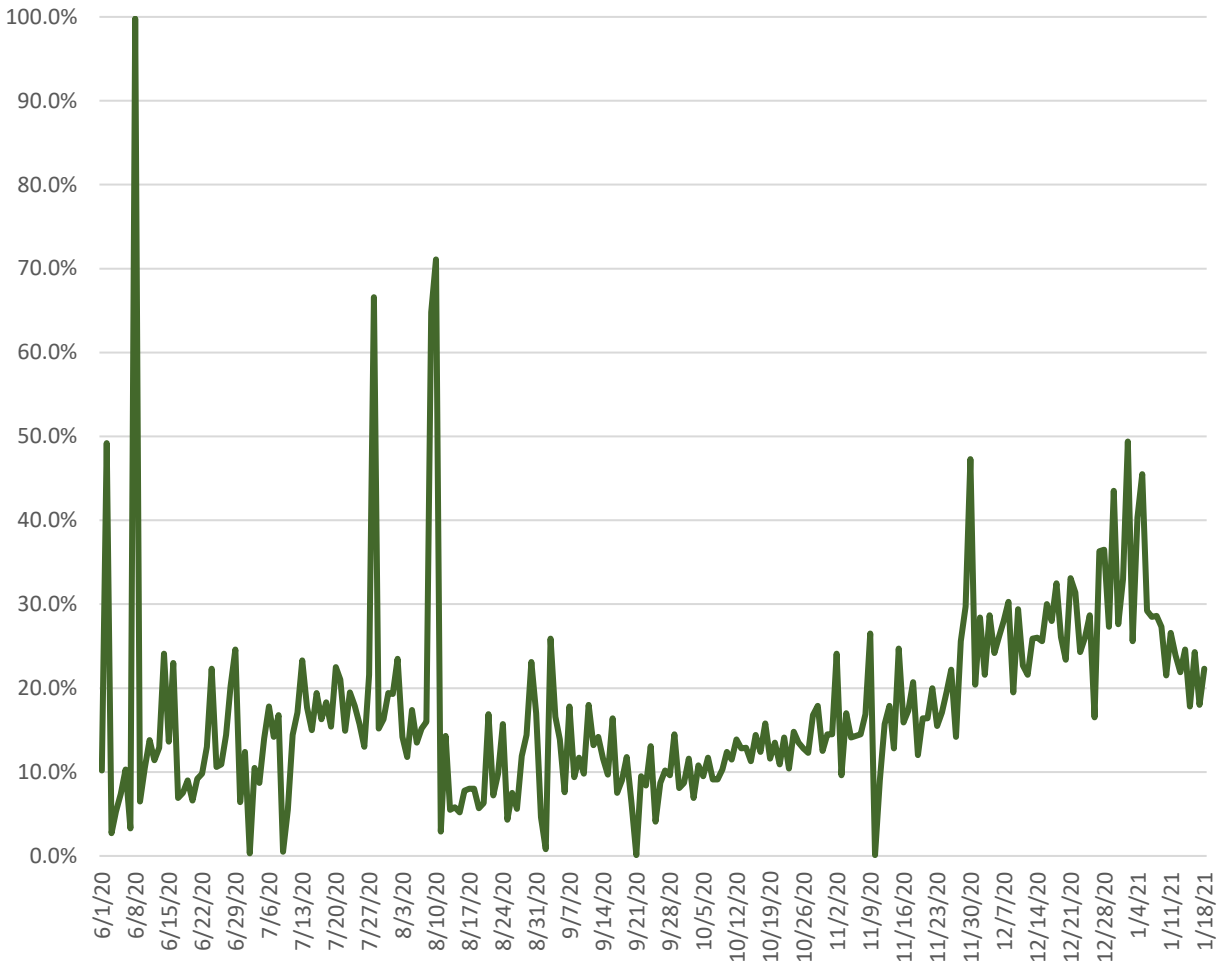
Source: Alabama Incident Management System | Updated Daily After 1 p.m.



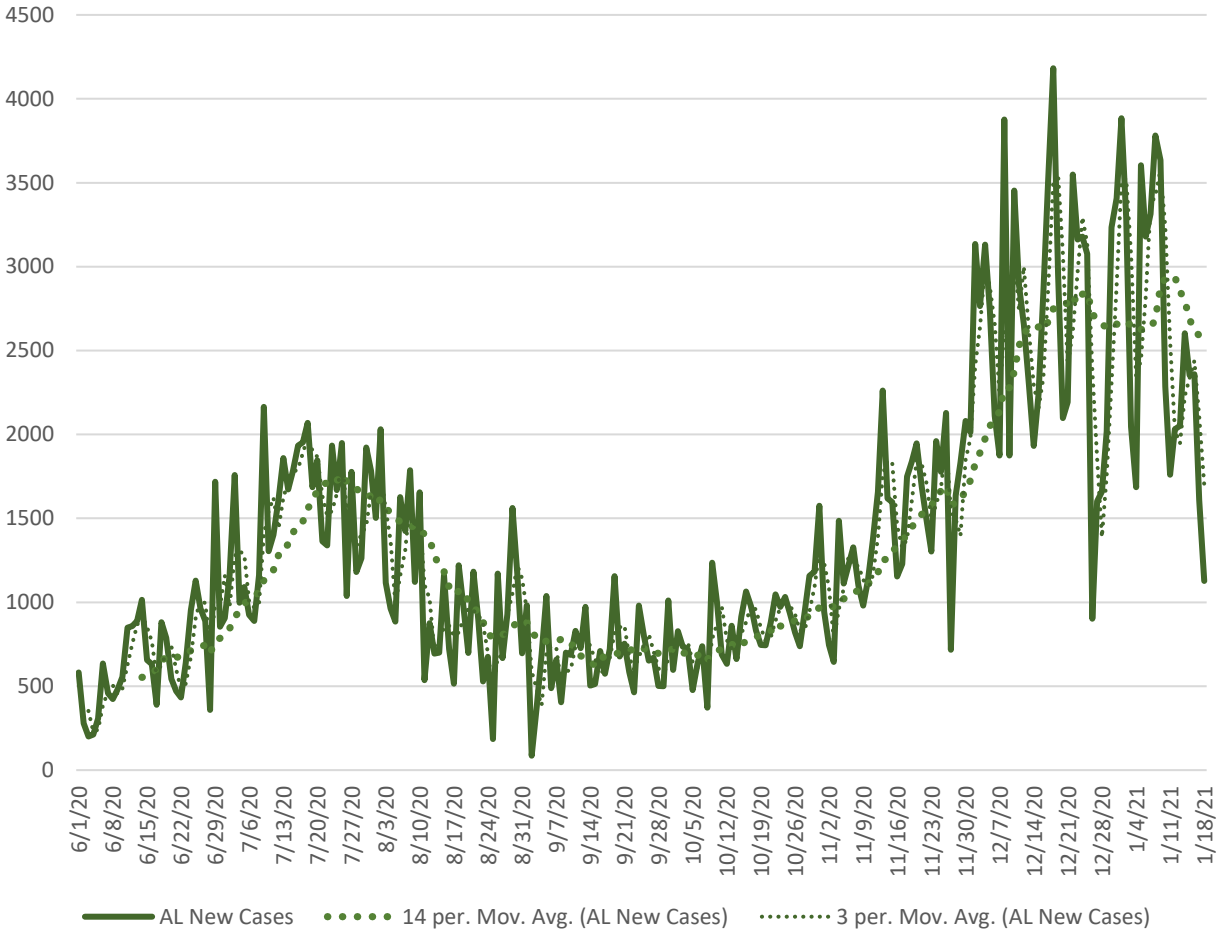
Alabama Daily Tests



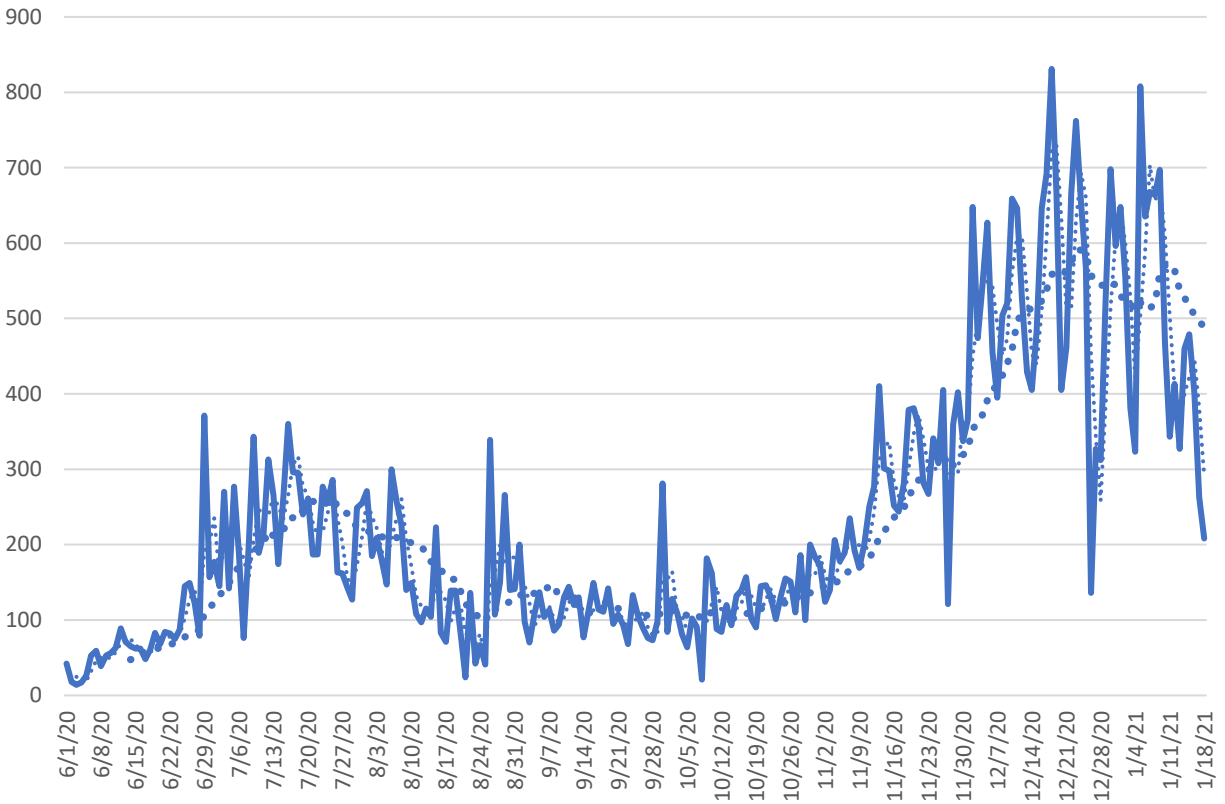
Alabama Daily Percent Tests Positive



AL New Cases



Jefferson County New Cases



Jefferson County New Cases