

# Student Involvement & Leadership

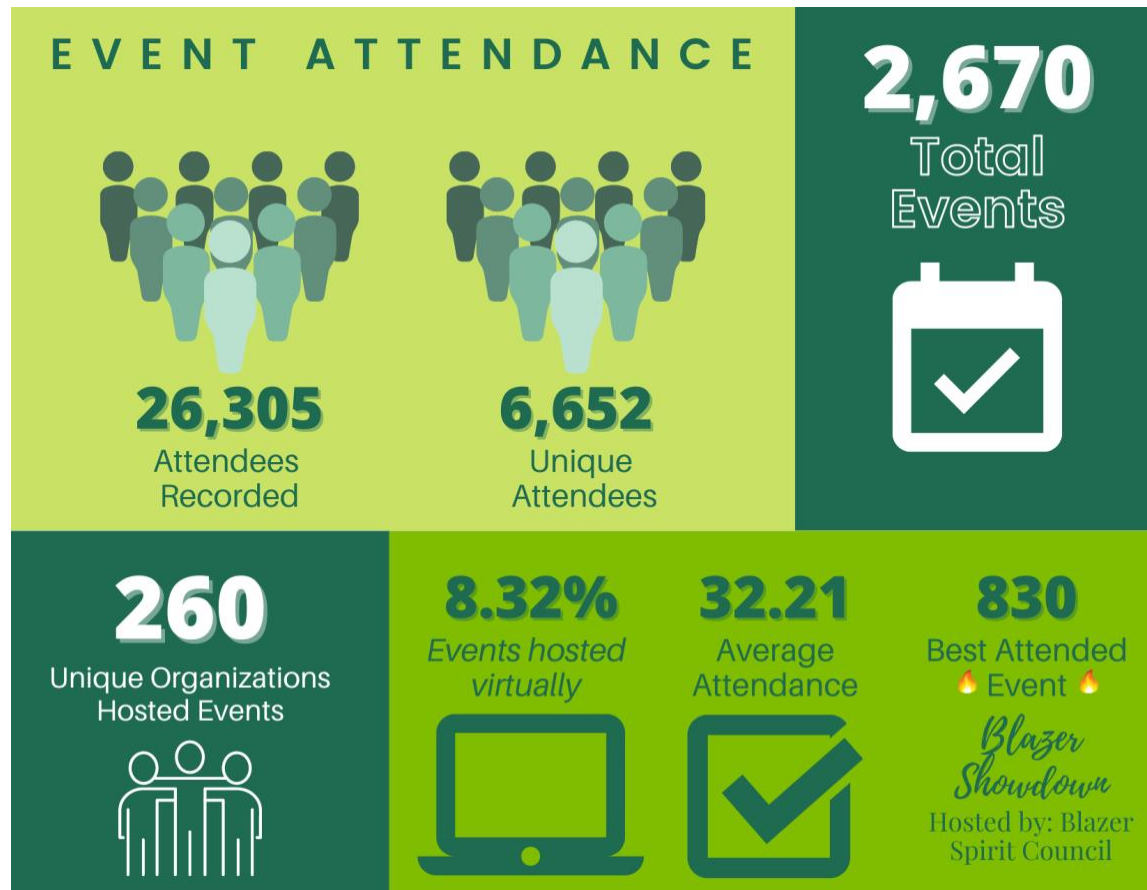
## Semester Report

### Fall 2021

#### I. Student Events & Programming

Total Events Registered and Approved on Engage for Fall 2021 Semester: 2,670

Month	FY20	FY21	FY22	FY21-FY22 Growth	FY20-FY22 Growth
August	91	67	138	106% increase	52% increase
September	589	451	742	95% increase	49% increase
October	812	474	878	85% increase	8% increase
November	634	304	704	132% increase	11% increase
December	232	50	208	316% increase	-
Total	2,358	1,346	2,670	98% increase	13% increase

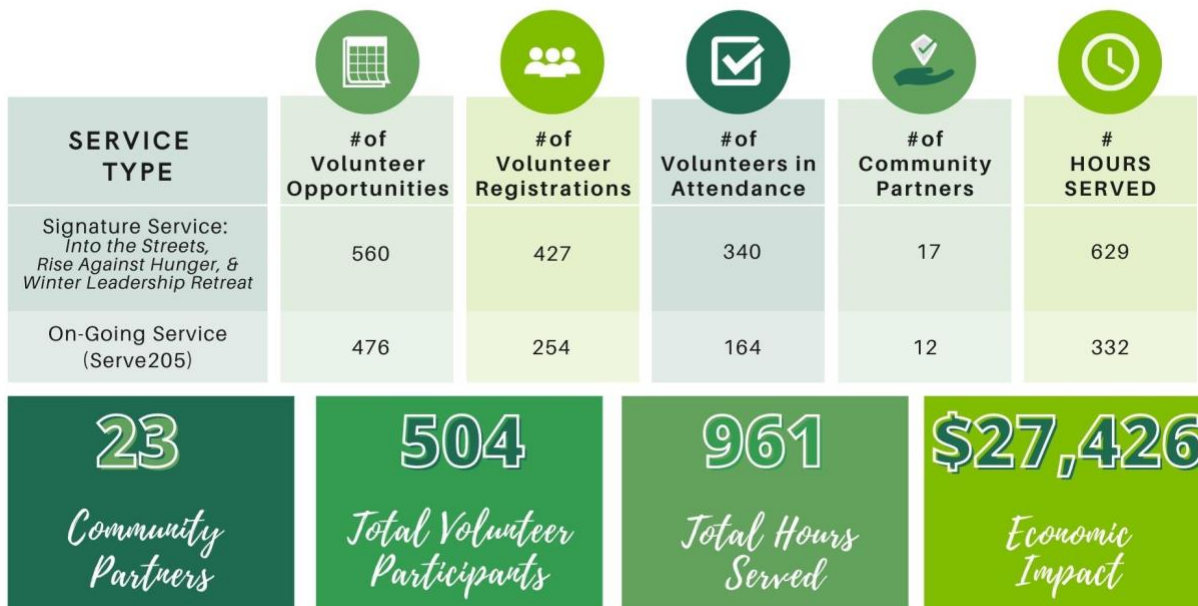


Total Programs Hosted by SIL During Fall 2021 Semester:

	Virtual	In-Person	AY22 YTD	AY21 YTD	AY20 YTD	AY19 YTD
# of Events	45	112	157	121	127	136
# of Participants	564	7,528	8,092	11,461	16,518	18,537

SIL Service Opportunities

*Fall 2021 - Volunteer Data*



II. Student Advising

	Aug/Sept	Oct.	Nov.	Dec.	Jan.	Feb.	March	April	YTD Total
2021-2022	550	148	173	82					953
2020-2021	295	105	95	30	71	91	141	89	917
2019-2020	187	121	121	23	141	149	236	64	1,042
2018-2019	268	173	135	17	110	272	326	115	1,416
2017-2018	166	95	148	25	181	286	320	148	1,369

\*2021-2022 SIL down 3 FTE in Aug/Sep, Oct., and Nov.

\*2020-2021 SIL down 2 FTE in Oct., Nov., Jan., Feb., and Apr.

III. Engage

	Aug/Sept			Oct.			Nov.			Fall Avg.		
	AY22	AY21	AY20	AY22	AY21	AY20	AY22	AY21	AY20	AY22	AY21	AY20
Users	11,842	9,026	15,204	11,810	6,520	9,162	8,247	5,100	6,365	10,663	6,882	10,243
Sessions	24,586	20,782	37,543	25,794	14,496	20,472	16,324	9,900	12,928	22,234	15,059	23,647

# ENGAGE

## DATA ANALYTICS FALL 2021

USERS **37,825**

COMPARATIVE DATA

**74%** INCREASE IN USERS  
COMPARED TO FALL 2020

SESSIONS

**92,046**

COMPARATIVE DATA **67%** INCREASE IN SESSIONS  
COMPARED TO FALL 2020

A SESSION IS THE TIME PERIOD A USER IS ACTIVELY ENGAGED WITH THE WEBSITE.

### TOP 3 EVENTS VISITED

1. Spooky Halloween Festival  
a. 919 views
2. Blazer Showdown  
a. 902 views
3. FYE & VMASC Finals Party  
a. 621 views

### TOP 5 ORGANIZATIONS

1. USGA  
a. 3,137 views
2. AKA  
a. 2,230 views
3. Delta Gamma  
a. 2,119 views
4. Delta Sigma Theta  
a. 1,930 views
5. Active Minds UAB  
a. 1,334 views

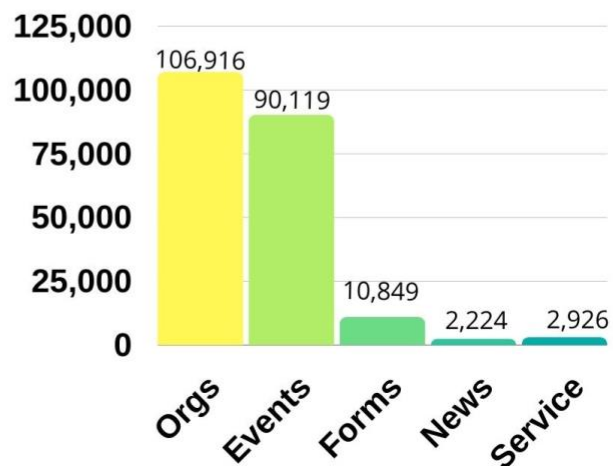
PAGEVIEWS

**697,389**

COMPARATIVE DATA **61%** INCREASE IN PAGEVIEWS  
COMPARED TO FALL 2020

PAGEVIEWS ARE THE TOTAL NUMBER OF PAGES VIEWED.

### UNIQUE VIEWS PER TAB





## EVENTS OVERVIEW

AUGUST 2021 - DECEMBER 2021

### EVENT SUBMISSIONS

**3,429**

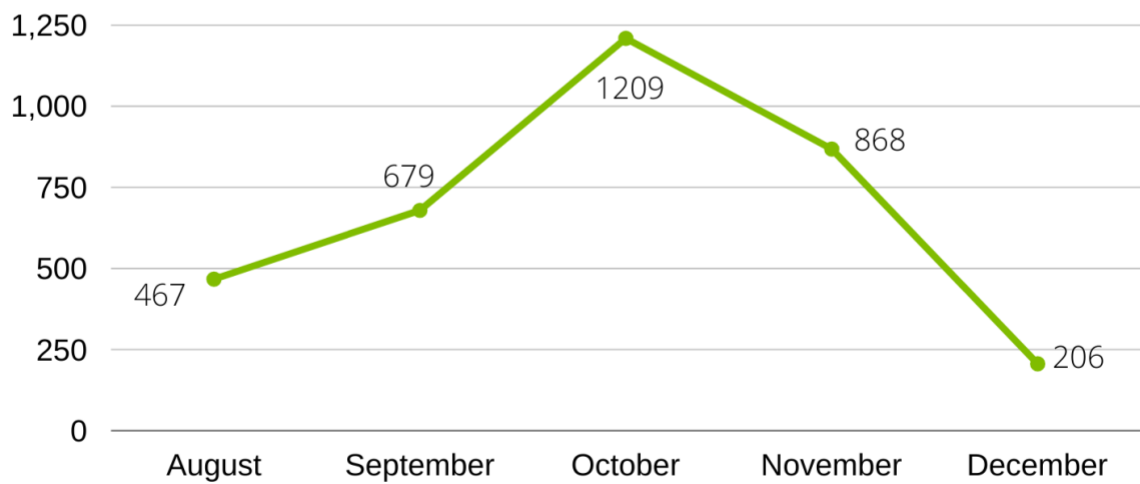
3,125 APPROVED

### EVENTS HOSTED

**2,912**

AN ADDITIONAL **213** EVENTS  
WERE APPROVED BUT  
CANCELLED

### EVENT SUBMISSIONS PER MONTH



#### IV. Student Organizations

**Total Number of Organizations: 382**

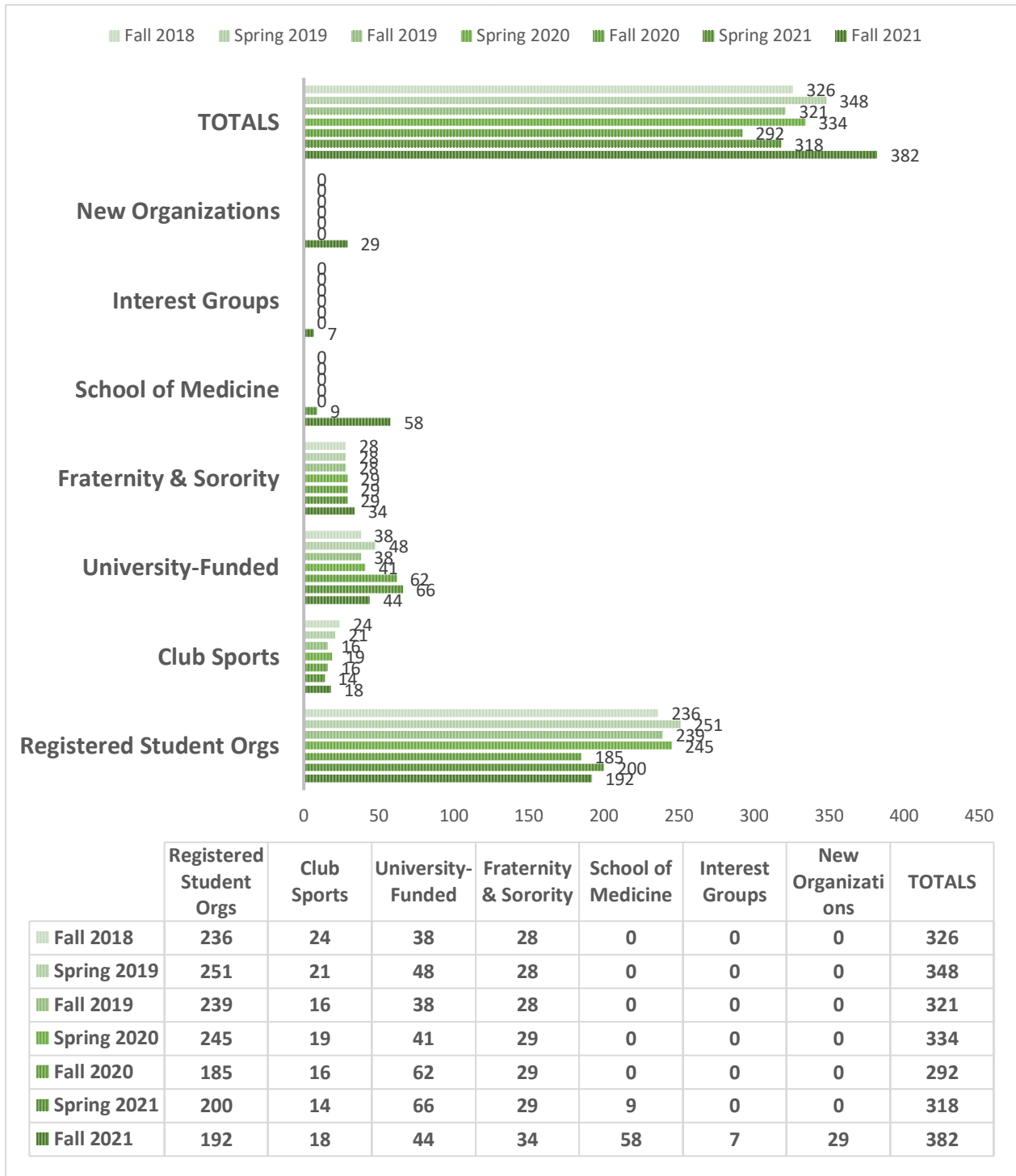
**\*30% increase in orgs from Fall 2020**



14 organizations that were inactive in Spring 2021 re-registered this Fall



However, 16 organizations that were active in Spring 2021 did not re-register  
44 organizations did not re-register for Fall 2020, Spring 2021, or Fall 2021



*\*\*Please Note: Interest Groups and New Organizations have been added to this chart as of Fall 2021 and will henceforth be reported on.*

### **New Organizations**

**Fall 2021 – 29 organizations**

**Fall 2020 – 25 organizations**

<b>New Organization Name</b>	<b>Registration Period</b>
1. American Optometric Student Association - UABSO Chapter	Fall 2021
2. Arts in Medicine	Fall 2021
3. Birmingham Committee on Foreign Relations at UAB	Fall 2021
4. Blazing Start Student Leadership Council	Fall 2021
5. Campus Outreach at UAB	Fall 2021
6. Climb On at UAB	Fall 2021
7. Dental Business Club at UAB	Fall 2021
8. End Allergies Together at UAB	Fall 2021
9. Feminist at UAB	Fall 2021
10. Gift of Life Marrow Registry at UAB	Fall 2021
11. Habitat for Humanity Interest Group UABSOM	Fall 2021
12. Hearts for Homeless Birmingham	Fall 2021
13. Higher Education Student Organization at UAB	Fall 2021
14. It's On Us at UAB	Fall 2021
15. Medical Student High School Advisors	Fall 2021
16. Mock Trial at UAB	Fall 2021
17. Oral and Maxillofacial Surgery Interest Group	Fall 2021
18. Project AFIRE: Altruistic Fraternity that Inspires through Rewarding Experiences	Fall 2021
19. School of Optometry Student Government Association	Fall 2021
20. Society of Materials Engineers, UAB	Fall 2021
21. Student Mentoring Club at UABSO	Fall 2021
22. The Private Practice Club at UAB School of Optometry	Fall 2021
23. The School of Nursing PhD Student DEI and Advisory Council	Fall 2021
24. Thomistic Institute Chapter at UAB	Fall 2021
25. Thread Together	Fall 2021
26. Tutoring4Tots i.	Fall 2021
27. Wheelchair Basketball Club at UAB	Fall 2021
28. Women in Tech at UAB	Fall 2021
29. Wyvern Witches of UAB	Fall 2021

## Interest Groups

### Fall 2021 – 12 groups

Interest Group Names	Registration Period
1. Black Undergraduate Medical Association (BUMA)	Fall 2021
2. Caribbean Student Association	Fall 2021
3. Clay Shooting at UAB	Fall 2021
4. Down South Barbershop	Fall 2021
5. Golf Club at UAB	Fall 2021
6. Jewish Organization	Fall 2021
7. Motorsports	Fall 2021
8. NYA Crepes	Fall 2021
9. Plastic & Reconstructive Surgery Interest Group	Fall 2021
10. Project Sunflower	Fall 2021
11. Rubik's Cube Club	Fall 2021
12. YoungLife Birmingham	Fall 2021

## Health Promotion Officer Training

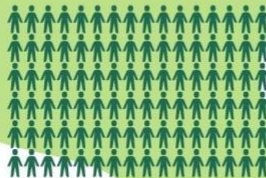
### Health Promotion Officer Fall 2021 Data

Over the course of the Fall 2021 semester, six Health Promotion Officer trainings were facilitated by the Office of Student Involvement & Leadership.

#### 178 Participants

9/24 - 24 participants  
\*9/27 - 38 participants  
9/30 - 27 participants  
10/11 - 25 participants  
11/1 - 31 participants  
\*11/9 - 32 participants

\*Virtual trainings had the highest attendance.



93%

#### Content Comfort

93% "Very Comfortable" sharing content with peers post-training

57%

of orgs had 2+ representatives

#### 141 Organizations

On average, every participant represented 2 organizations. The most represented organizations were Serve205 (14 representatives), Alpha Xi Delta (12 representatives), and USGA (11 representatives). Sixty-one orgs had 1 representative.

#### Satisfaction

"Strongly agreed" training was beneficial

84%



# Homecoming Week

## 2020 Event Experience



**4**

# of Blazer Spirit Competition Teams



**5**

# of Button Designs Submitted



**5,197**

Total # of Event Participants (includes video views)



**210**

Total # of Event RSVPs



**15**

Total # of Events Hosted (includes SIL events only)

# Stress Less Week

## Fall 2020 Event Experience



**77**

# of Unique Student RSVPs for Events



**282**

Total # of Event RSVPs



**85**

Total # of Care Packages Distributed



**87**

Total # of Event Participants



**5**

Total # of Events hosted

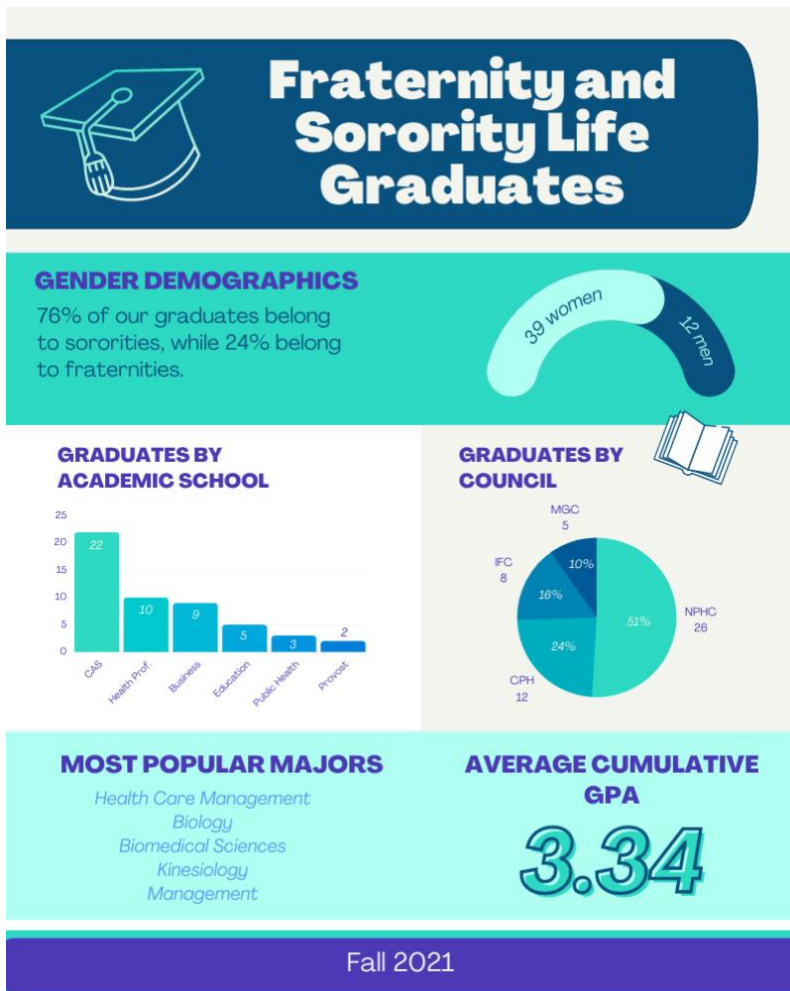


# Grad Week

## Fall 2020 Event Experience



### V. FSL Graduate Overview



**VI. FSL New Member Overview**

<b>Interfraternity Council</b>	<b>68</b>
Alpha Sigma Phi	5
Alpha Tau Omega	18
Delta Sigma Phi	10
Lambda Chi Alpha	0
Phi Gamma Delta	3
Pi Kappa Phi	15
Sigma Chi (emerging chapter)	5
Tau Kappa Epsilon	1
Theta Chi	12
<b>Multicultural Greek Council</b>	<b>18</b>
Beta Chi Theta Fraternity, Inc.	0
Delta Epsilon Psi Fraternity, Inc.	6
Delta Phi Omega Sorority, Inc.	0
Sigma Sigma Rho Sorority, Inc.	10
Sigma Lambda Gamma Sorority, Inc.	2
<b>National Pan-Hellenic Council</b>	<b>18</b>
Alpha Phi Alpha Fraternity, Inc.	11
Alpha Kappa Alpha Sorority, Inc.	0
Kappa Alpha Psi Fraternity, Inc.	0
Omega Psi Phi Fraternity, Inc.	5
Delta Sigma Theta Sorority, Inc.	0
Phi Beta Sigma Fraternity, Inc.	2
Zeta Phi Beta Sorority, Inc.	0
Sigma Gamma Rho Sorority, Inc.	0
<b>Panhellenic Council</b>	<b>148</b>
Alpha Gamma Delta	25
Alpha Omicron Pi	24
Alpha Xi Delta	23
Delta Gamma	28
Kappa Delta	26
Sigma Kappa	22
<b>Total New Members:</b>	<b>252</b>



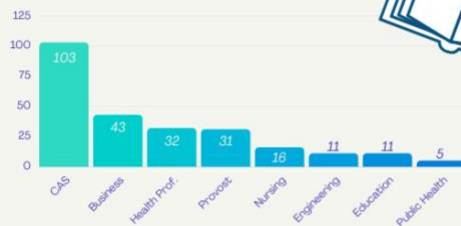
# Fraternity and Sorority Life New Members

## GENDER DEMOGRAPHICS

63% of our new members belong to sororities, while 37% belong to fraternities.



## ACADEMIC INFORMATION



New Members by Academic School



## HOUSING

73% of our students live on campus. The other 27% live off campus in the local Birmingham community.

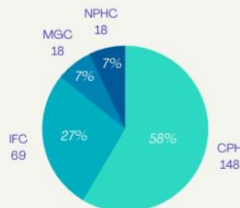


## ENROLLMENT

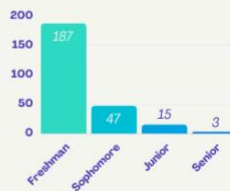
20% of fraternity and sorority members are transfer students.



## COUNCIL AND CLASSIFICATION DATA



New Members by Council



New Members by Classification

## MOST POPULAR MAJORS

Pre-Nursing  
Biomedical Sciences  
Biology  
Psychology  
Neuroscience

## NEW MEMBER SEMESTER GPA

3.25

### I. Fraternity & Sorority Life Academic Overview

II. University Statistics	Overall Member Semester GPA	Overall Membership	Number Initiates	Initiate Term GPA	Number New Members	New Member Term GPA
All MGC	3.25	64	46	3.26	18	3.21
All CPH	3.39	483	335	3.38	148	3.40
All IFC	3.03	275	207	3.03	68	3.03
All NPHC	3.01	150	132	3.03	18	2.83
All Sorority	3.33	639	444	3.32	160	3.39
All Fraternity	3.00	333	471	3.00	92	3.00
All FSL	3.22	972	720	3.21	252	3.25
All Undergraduate Women's	3.19	16,402				
All Undergraduate Men's	3.02	10,216				
All Undergraduate	3.12	26,697				

#### Highest GPAs in each council

CPH: Alpha Xi Delta (3.59)  
 IFC: Tau Kappa Epsilon (3.35)  
 MGC: Delta Epsilon Psi (3.35)  
 NPHC: Sigma Gamma Rho (3.32)

#### Chapters on Academic Warning Spring 2022

Kappa Alpha Psi (2.40)  
 Omega Psi Phi (2.42)  
 Zeta Phi Beta (2.35)

### III. Professional Development

Staff Member Name	Skill Enhancement	Hours
Jessica Brown	WISA Table Talk-Mentorship vs Sponsorship	1
Jennifer Griffin & Lauren Cotant	NASPA-AL Board of Directors Monthly Meeting	1(x2)
Myah Morton	ACUI Webinar-eSports Foundations	1
Jessica Brown	WISA Book Club-"You Are Your Best Thing" Book Discussion	1

Jessica Brown & Jeralyn Langford	WISA Womxn Wednesday- Navigating the New Normal Pt. 2	1 (x2)
Lauren Cotant	Upward Momentum Alumnae: Community Engagement Committee	1
Jeralyn Langford & Lauren Cotant	Post-Secondary Alliance for Community Engagement (PACE) Fall Meeting	2(x2)
Lauren Cotant	Post-Secondary Alliance for Community Engagement (PACE) Exec Meeting	1
Stacy Rowan	Safe Zone Training	2
Stacy Rowan	Cultural Awareness Building Blocks	1.5
Stacy Rowan	AFA Tuesday Talks: Recruitment, Intake, and New Member Education	1
Jennifer Griffin, Lauren Cotant, and Stacy Rowan	Faculty Search Committee Training (ODEI)	4.5
Jessica Brown, Lauren Cotant, and Myah Morton	Presented on First Impact Program to the NASPA Retention & Success Knowledge Community	3
Stacy Rowan	Summit Against Hate (addressing antisemitism in FSL communities)	2
Stacy Rowan	Urban Campus Colleague Connection NASPA FSL KC	1
Jessica Brown	Womxn Wednesday: Accessibility	1
Alex Bushery	Green Zone Training	4
Lauren Cotant	Post Secondary Alliance for Community Engagement	1
Stacy Rowan	DiversiTEA: Difficult Conversations	1
Stacy Rowan	AdvanceU: The State of Hazing (understanding hazing laws by state)	1
Stacy Rowan	Translating Research to Practice: Data on the Perception of Non-Members and the Developmental Strengths of Current Fraternity & Sorority Members	1
Stacy Rowan	Peer Affinity Chat: Mid-Level Managers	1

Stacy Rowan	Association of Fraternity/Sorority Advisors Annual Meeting (AFA)	13
Jennifer Griffin & Stacy Rowan	Campus Security Authority Training	2
<b>Total Hours of Professional Development:</b>		<b>53</b>