

Student Involvement & Leadership

Semester Report

Fall 2018

Advising

Advising Hours

Fall 2018

576

Fall 2017

295

Programming

of Events

of Participants

	Fall 2018	Fall 2017	Fall 2018	Fall 2017
Totals:	80	59	11,425	7,782

3 SERVICE OPPORTUNITIES PROVIDED AN

ECONOMIC IMPACT

OF \$46,293

14% INCREASE FROM FALL 2017

26%

increase in
of events
offered compared
to Fall 2017

32%

increase in student engagement
through event participation
compared to Fall 2017

49%

increase in # of advising hours utilized by
students compared to Fall 2017

Student Involvement & Leadership

Semester Report

Fall 2018

ENGAGE

Fall 2018 User Activity



17,269

USERS



186,184

PAGE VIEWS

Engage is UAB's new online involvement platform for students



Engagement By Academic School

School of Nursing **43%**

School of Health Prof. **38%**

School of Education **37%**

College of Arts & Sciences **29%**

School of Engineering **28%**

School of Public Health **26%**

Collat School of Business **14%**

% of students in each school who engaged in at least one program in Fall 2018

Graduate/Prof
6%

Senior
17%

Freshman
30%

Junior
21%

Sophomore
26%

Classification % of program participants for Fall 2018

Student Involvement & Leadership Semester Report

Fall 2018

SIL STUDENT LEADERS WERE
RETAINED AT A RATE OF

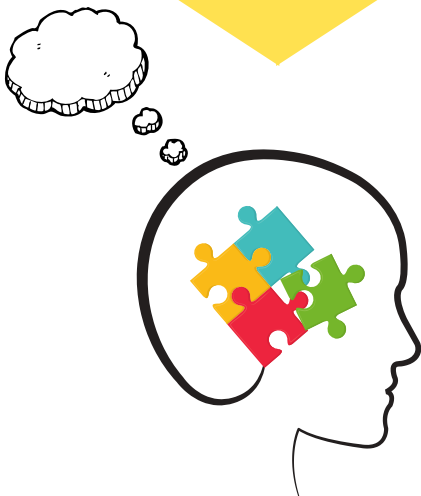
95%

From Fall 2018 to Spring 2019

Student Leaders demonstration growth in practical leadership

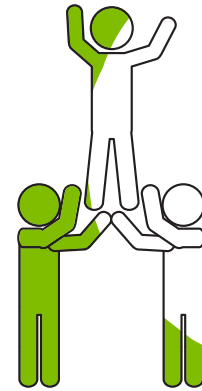
"When delegating tasks to my assistants, I give simple tasks to measure where each member is at in time management, work ethic, and accountability. Based on those identifiers, I will assign more responsibility and monitor their progress while offering assistance if need me."

-Member of Good Games UAB
(gg.UAB)



156

Unique Student Leaders



3.26 Average Semester GPA

Compared to All Undergraduate of 2.99

1,000

Fraternity & Sorority Community Members



3.17 Average Semester GPA

Compared to All Undergraduate of 2.99