

Student Involvement & Leadership

Semester Report

Fall 2022

SIL Programming: 37% increase in fall program participation compared to Fall 2021

	Virtual	In-Person	AY23 YTD	AY22 YTD	AY21 YTD	AY20 YTD	AY19 YTD
# of Events	5	86	91	262	186	127	136
# of Participants	207	10,902	11,109	12,840	16,332	16,518	18,537

*Fall semester totals include service programming not included in monthly totals on Aug-Nov reports.

SIL Service Opportunities:

Fall 2022 - Volunteer Data



SIL Advising Contributions:

	Aug/Sept	Oct.	Nov.	Dec.	Jan.	Feb.	March	April	YTD Total
2022-2023	328	179	167	36					710
2021-2022	550	148	173	82	129	104	126	82	1,312
2020-2021	295	105	95	30	71	91	141	89	887
2019-2020	187	121	121	23	141	149	259	64	1,042
2018-2019	268	173	135	17	110	272	343	115	1,416
2017-2018	166	95	148	25	181	286	345	148	1,369

Program Spotlight: Student Leader Learning – Wellness Consultations

Student Involvement & Leadership conducted Wellness Consultations through a mid-year check-in in October and November 2022 as a part of our internal Student Leader Learning Cycle. Through the review, **57%** of students shared that they planned to reapply for their organization the following year (that's a **26% increase** in interest to reapply compared to Fall 2021). Furthermore, **70%** of these students shared satisfaction with the sense of belonging the organization experience helped them develop while at UAB. Additionally, **80%** reported they were very satisfied with the opportunities the experience provided them to develop as a leader. As a preventative approach to support the students' wellness, each student also completed the Perceived Stress Scale. The average score for an SIL student leader was **17.01 (indicating moderate stress)**. This was a 2% increase in comparison to the SIL Retreat (August 2022) score. One could conclude that this mild increase does not result from the organization experience, rather academic stressors, or personal responsibilities outside of school. As a part of the review, students' grade point average was also tracked. SIL student leaders as a whole have a **3.86 cumulative GPA** concluding the Fall 2022 semester.

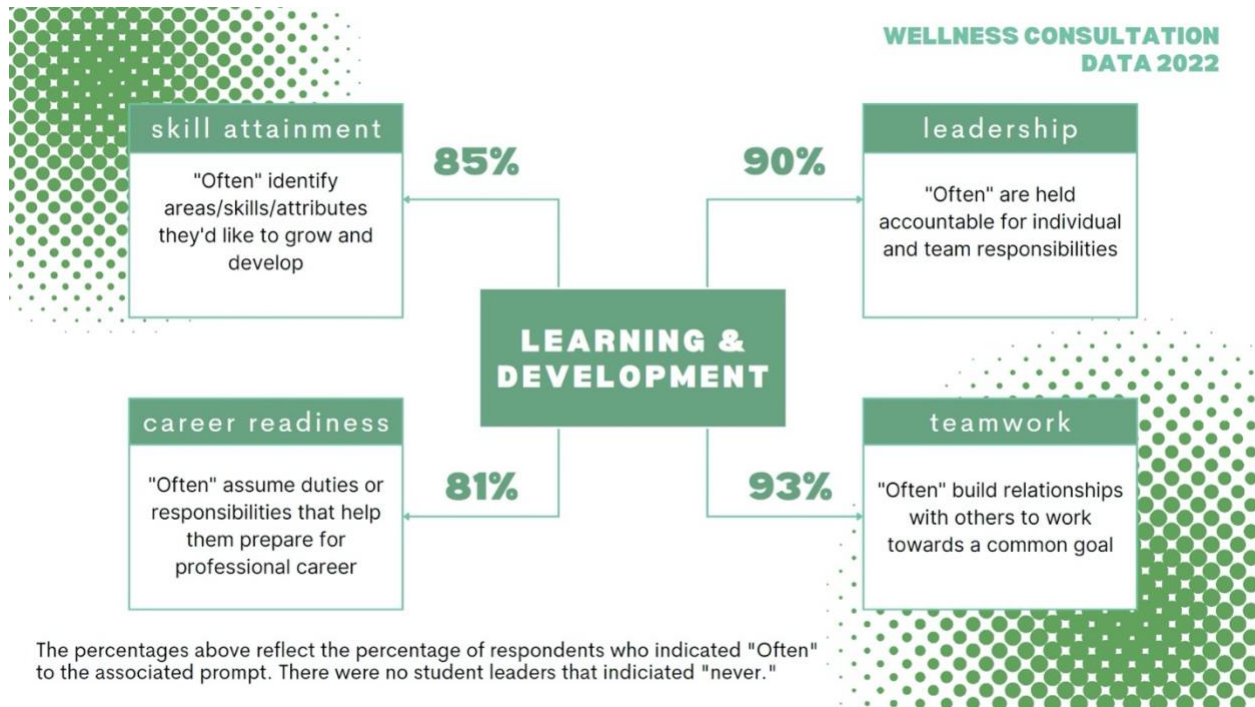
WELLNESS CONSULTATION DATA 2022

Student Leader Retention

Of the 104 respondents, 35 indicated they were graduating. Of those returning for another academic year, the following responses indicate their interest in remaining in their student organization:



**WELLNESS CONSULTATION
DATA 2022**

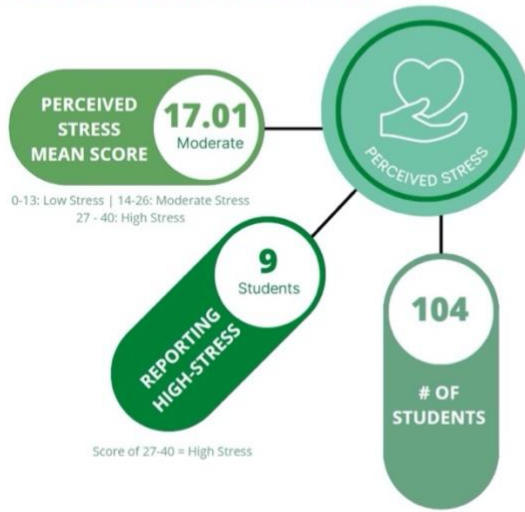


Org Experience SATISFACTION



**WELLNESS CONSULTATION
DATA 2022**

Wellness Consultation Assessment Results



Scores by Organization

- Pathfinders: 13.20 PSS (Fall)
◦ 15 PSS (Retreat score)
- ESL: 17.38 PSS (Fall)
◦ 16.84 PSS (Retreat score)
- Serve205: 14.21 PSS (Fall)
◦ 14.20 PSS (Retreat score)
- LSC: 18.21 PSS (Fall)
◦ 15.41 PSS (retreat score)
- Ambassadors: 15.14 PSS (Fall)
◦ 15.82 PSS (Retreat score)
- BPA's: 18.25 PSS (Fall)
◦ 18 PSS (Retreat score)
- gg.UAB: 18.75 PSS (Fall)
◦ 18.75 PSS (Retreat score)
- BSC: 19 PSS (Fall)
◦ 17.73 PSS (Retreat score)

In comparison to the Fall SIL Retreat scores, there was a 2% increase in the student leaders' collective stress level.

SIL Student Leader Grades 2022-2023

	Averages UAB Cumulative	Spring 22	Fall 22
Ambassadors	3.89	3.93	3.81
BSC	3.77	3.56	3.59
GG.UAB	3.59	3.61	3.39
LSC	3.81	3.70	3.76
Serve205	3.91	3.86	3.88
BPA's	3.7	3.94	3.30
First Impact	3.61	NA	3.60
TOTALS	3.79	3.78	3.72

SIL Student Leader Retention

Organization	# Selected	# Retained for Spring 23	Retention
Ambassadors	24	24	100%
BSC	16	15(One removed due to grades)	94%
GG.UAB	4	4	100%
LSC	19	17 (One withdrew and one graduated)	95%
Serve205	26	25 (One withdrew)	96%
BPA's	4	3	75%
First Impact	28	25 (Removed two due to grades; one academic conflict)	89%
Pathfinders	4	3 (One withdrew)	75%
ALL SIL Orgs	125	116	93% Retained

*Students that graduated did not impact the reported percentage retained.

Event Spotlight: Freshman Leadership Experience



Students were divided into three "communities" or teams for their time during the retreat.

Communities

Blue Community

Red Community

Yellow Community



Time spent was divided between service and leadership education. The educational framework applied was

Servant Leadership



100% of post-experience survey respondents were able to articulate the 10 characteristics of servant leadership!

COMMUNITY SERVICE

Community partners:

- Salvation Army
- The Arc of Central Alabama

96

Hours donated

\$2,739

Economic impact

100% of post-experience survey respondents reported feeling **better connected to the Birmingham community**

100% of post-experience survey respondents reported feeling **better connected to the UAB community**

PARTICIPANT QUOTES



"The overall experience was amazing! Getting to go out a serve and also create new friendships was probably my favorite part of the whole experience."

"I am very thankful for the opportunity to have spent the week in the Freshman Leadership Experience and it has brought so much for me. I will definitely carry the things taught this week with me in my time at UAB and after."

Student Organizations Overview

Total Number of Organizations: 406

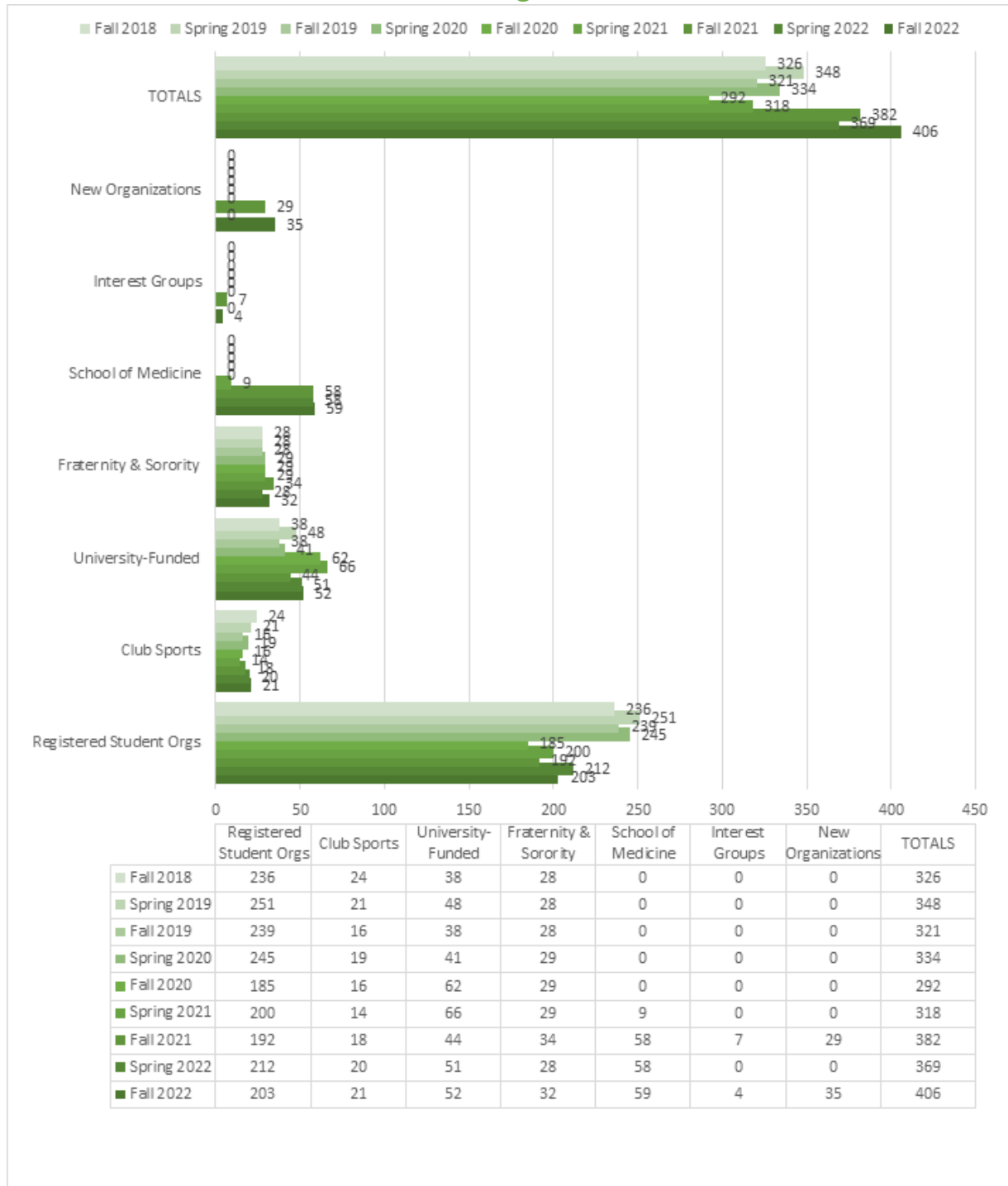


22 organizations that were inactive in Spring 2022 re-registered this Fall.



However, 28 organizations that were active in Spring 2022 did not re-register. 28 organizations did not re-register for Spring 2021 or Fall 2022.

***6% increase in orgs from Fall 2021**



***Please Note: Interest Groups and New Organizations have been added to this chart as of Fall 2021 and will henceforth be reported on. Additionally, the total number for Fraternity & Sorority Life organizations includes both councils and chapters.*

Organization Mission & Purposes



New Organizations

Fall 2022 – 34 organizations

- Fall 2021 – 29 organizations
- Fall 2020 – 25 organizations

New Organization Name
1. Beta Sigma Kappa Honor Society at UAB School of Optometry
2. Blazin' Book Buddies
3. Camelot Society of Engineers
4. Equal Access Birmingham Undergraduate Volunteers
5. Figure Skating Club at UAB
6. Fusion Mentor Through Service at UAB
7. Genetics and Genomic Sciences Club

8. Genetics Interest Group at UAB
9. Glenwood Outreach at UAB
10.Green & Gold Fund
11.IEEE Student Branch at UAB
12.Leadership and Communication in Medicine at UAB
13.Medical Scientist Training Program Diversity, Equity & Inclusion Taskforce
14.Medical Students for Choice at UASOM
15.MedPride Heersink School of Medicine
16.Mission to Feed at UAB
17.Moot Court at UAB
18.Natyam at UAB
19.Notinee at UAB
20.Obstetrics & Gynecology Interest Group - Heersink School of Medicine
21.Optometry Communications Club
22.Physical Medicine and Rehabilitation Interest Group
23.Pickleball Club at UAB
24.Pre-Medicine Society at UAB
25.Psychedelic Studies Forum of Medical Students
26.Rocket League at UAB
27.School of Health Professions Ambassadors
28.Skate at UAB
29.Society for Women in Pre-Law
30.Student Advocacy Board
31.The Life in a Voice Chapter at UAB
32.Toastmasters at UAB
33.Valorant Blazers at UAB
34.Vedic Society at UAB

Fall 2022 Student Event Data:



ALL EVENTS DATA

AUGUST 2022 - DECEMBER 2022

ORGANIZATION & STUDENT AFFAIRS DEPT EVENTS

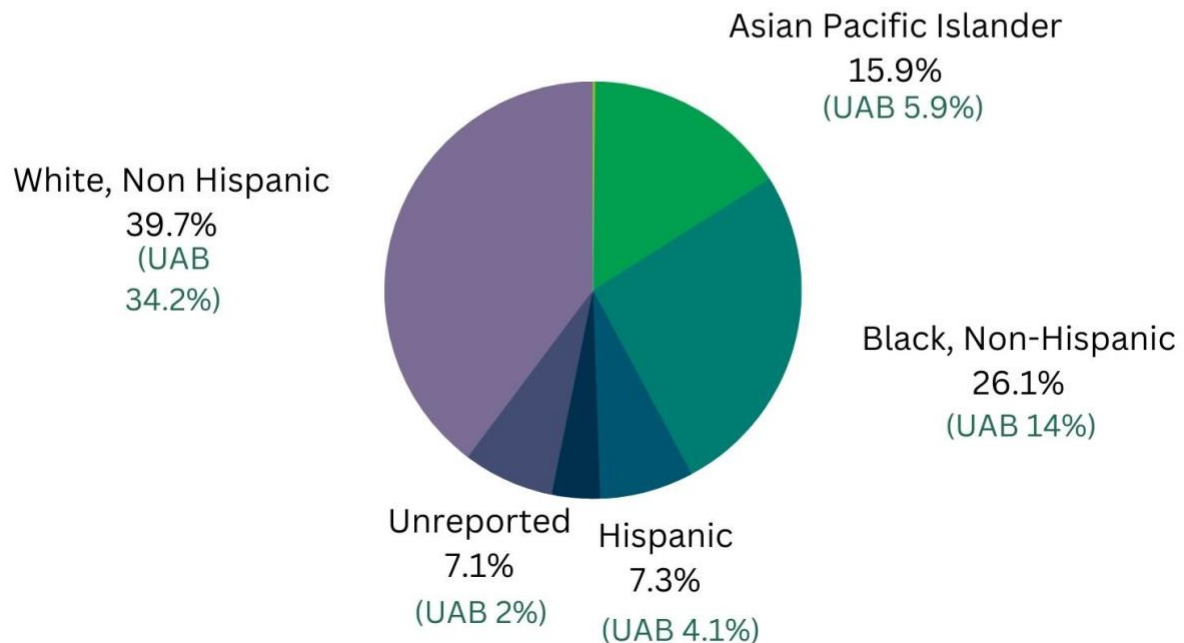
EVENT PARTICIPANT ETHNICITY

The following ethnic groups were **over-represented** in comparison to the student body:

- White (39% of event attendees/34% of student body)
- Asian Pacific Islander (15.9% of event attendees/5.9% of student body)
- Hispanic/Latino (7.3% of event attendees/4.1% of student body)
- Black, non-Hispanic (26.1% of event attendees, 14.4% of student body)

Student event attendees are **comparative** to the student body:

- Multi-cultural (3.2% of event attendees, 3% of student body)
- American Indian or Alaskan Native (0.1% of event attendees, 0.1% of student body)





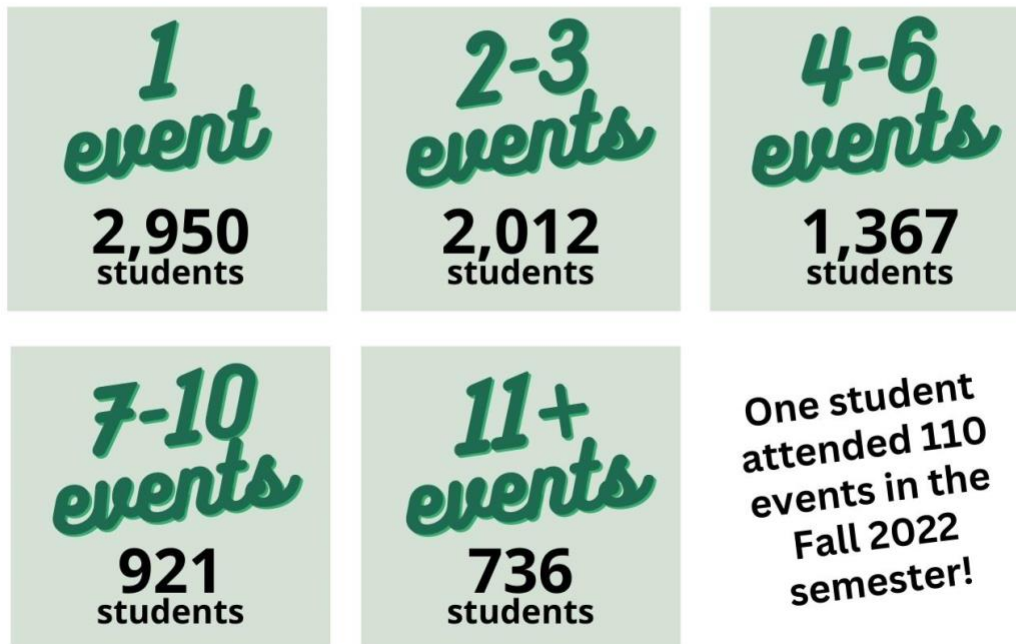
ALL EVENTS DATA

AUGUST 2022 - DECEMBER 2022

ORGANIZATION & STUDENT AFFAIRS DEPT EVENTS

NUMBER OF EVENTS ATTENDED PER PARTICIPANT

Of the 7,987 event attendees in Fall 2022, on average a UAB student would attend 4 events. Below details the degrees of participation. The most events one student attended were 110, the second highest number of events one student attended was 77. Both of these students are student leaders within the Office of Student Involvement & Leadership.



*Please note: Event attendance includes department tracked visitors for those departments that track visits through Engage.

ENGAGE

ALL EVENTS DATA

AUGUST 2022 - DECEMBER 2022

ORGANIZATION & STUDENT AFFAIRS DEPT EVENTS

DEMOGRAPHIC OF EVENT ATTENDEES



International Students

International students were over-represented at events in comparison to the undergraduate IS population (8.4%)



Transfer Students

Transfer students were over-represented at events in comparison to the undergraduate transfer population (8.7%)

On-Campus 62%
Off-Campus 38%



ENGAGE

ALL EVENTS DATA

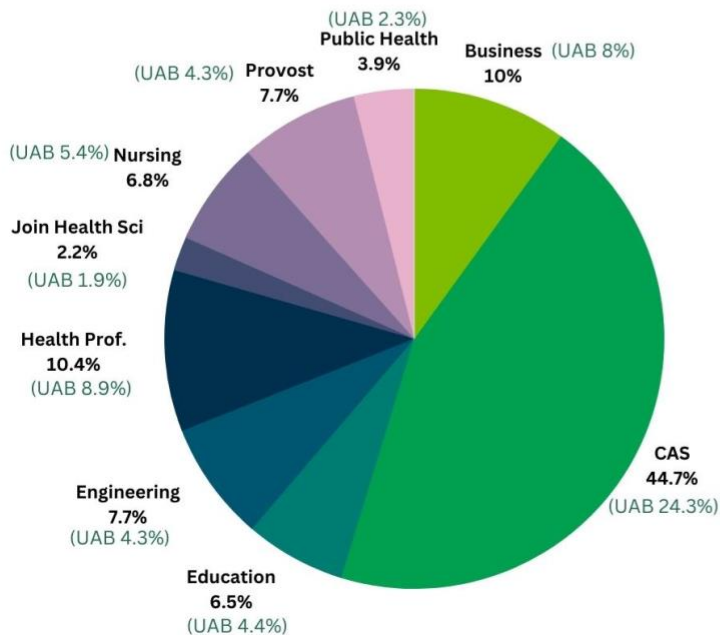
AUGUST 2022 - DECEMBER 2022

ORGANIZATION & STUDENT AFFAIRS DEPT EVENTS

EVENT ATTENDEES BY SCHOOL OF ENROLLMENT

All schools were **over-represented** in comparison to the student body:

- CAS (44.7% of event attendees compared to 24.3% of student body)
- Health Professions (10.4% of attendees compared to 8.9% of student body)
- Business (10% of event attendees compared to 8% of student body)
- Engineering (7.7% of attendees compared to 4.3% of student body)
- Provost (7.7% of attendees compared to 4.3% of student body)
- Nursing (6.8% of attendees compared to 5.4% of student body)
- Education (6.5% of attendees compared to 4.4% of student body)
- Public Health (3.9% of attendees compared to 2.3% of student body)
- Joint Health Sciences (2.2% of attendees compared to 1.9% of student body)



School	Average # of events attended per student
Business	4.3
CAS	5.2
Education	4.4
Engingeering	4.6
Health Prof	5.4
Joint Health Sci	2.7
Nursing	4.6
Provost	4.4
Public Health	4.8



EVENTS OVERVIEW

AUGUST 2022 - DECEMBER 2022

TOTAL STUDENT ORGANIZATION EVENTS

2,088

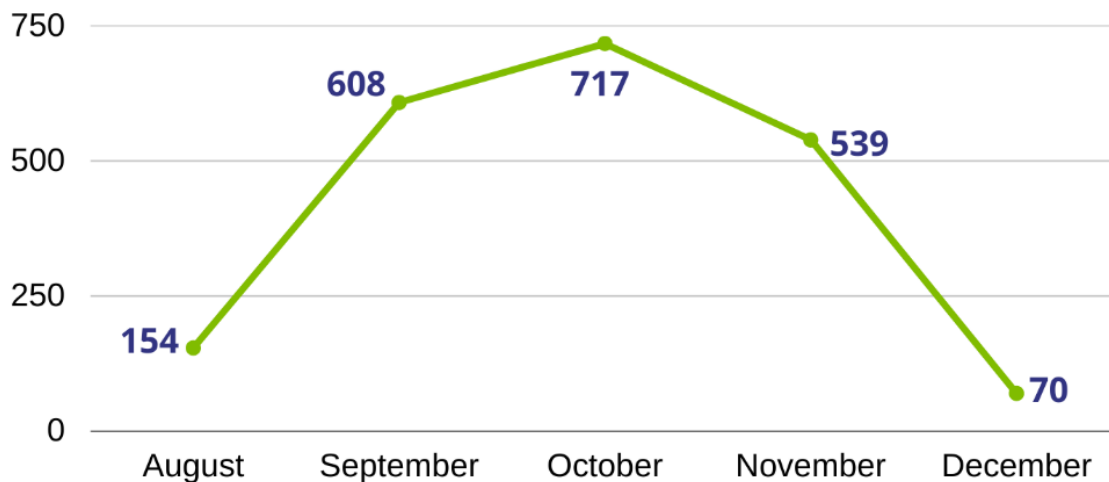
TOTAL EVENT ATTENDANCE

20,077

UNIQUE ATTENDANCE

10,658

STUDENT ORGANIZATION EVENTS PER MONTH

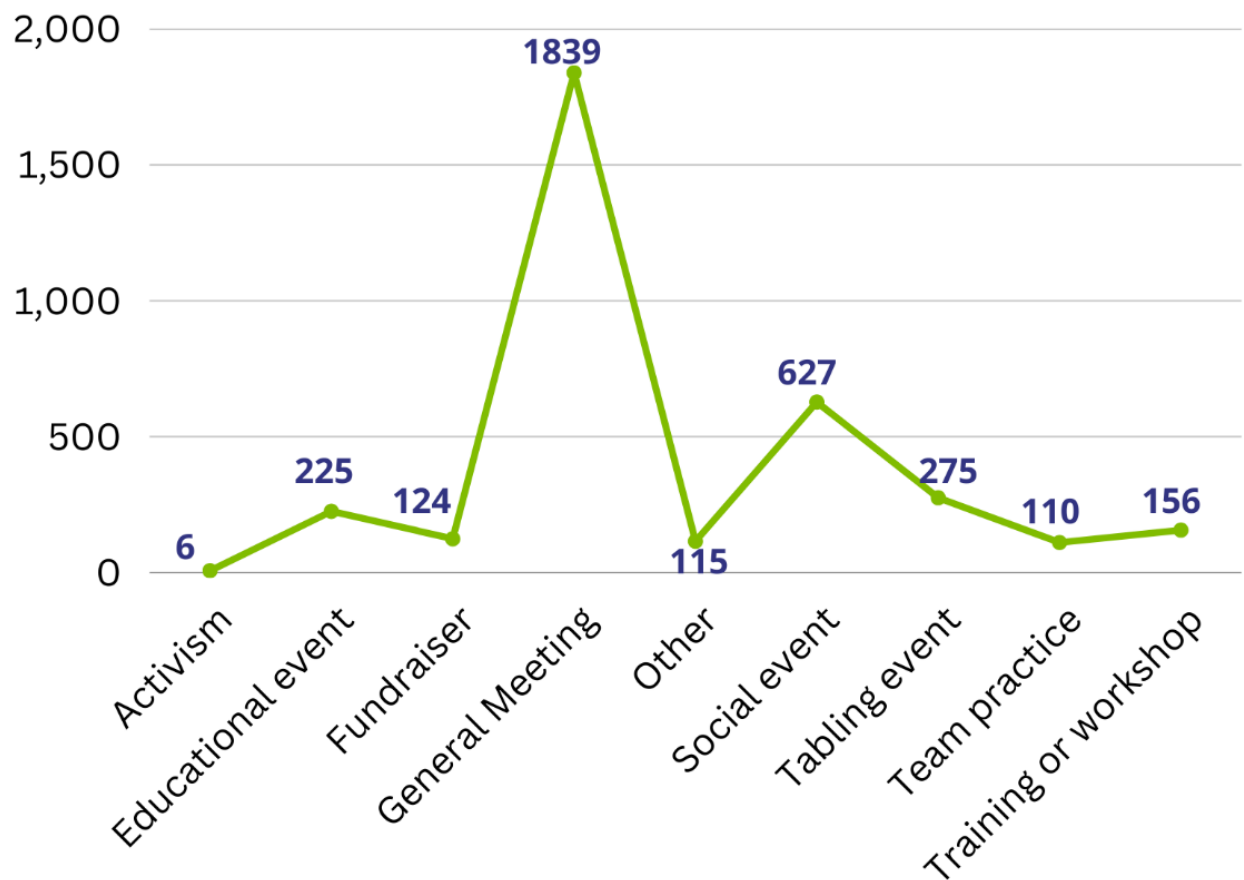




EVENTS OVERVIEW

AUGUST 2022 - DECEMBER 2022

STUDENT ORGANIZATION EVENT TYPES*



*Please note: Numbers for student organization event types do not align with total student organization events.

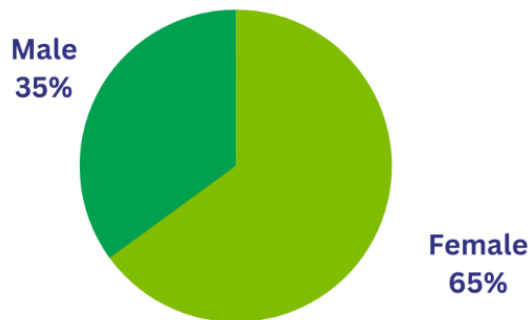


EVENTS OVERVIEW

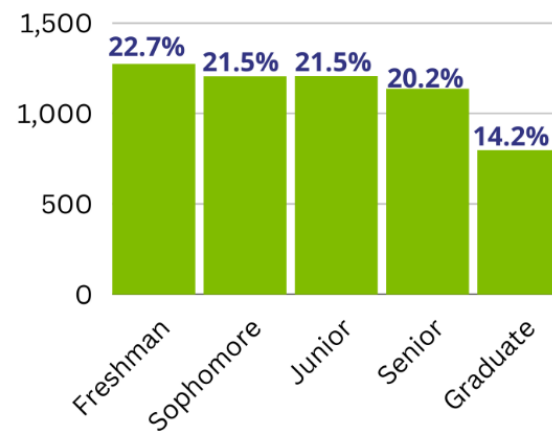
AUGUST 2022 - DECEMBER 2022

STUDENT ORGANIZATION EVENTS: ATTENDEE DEMOGRAPHICS

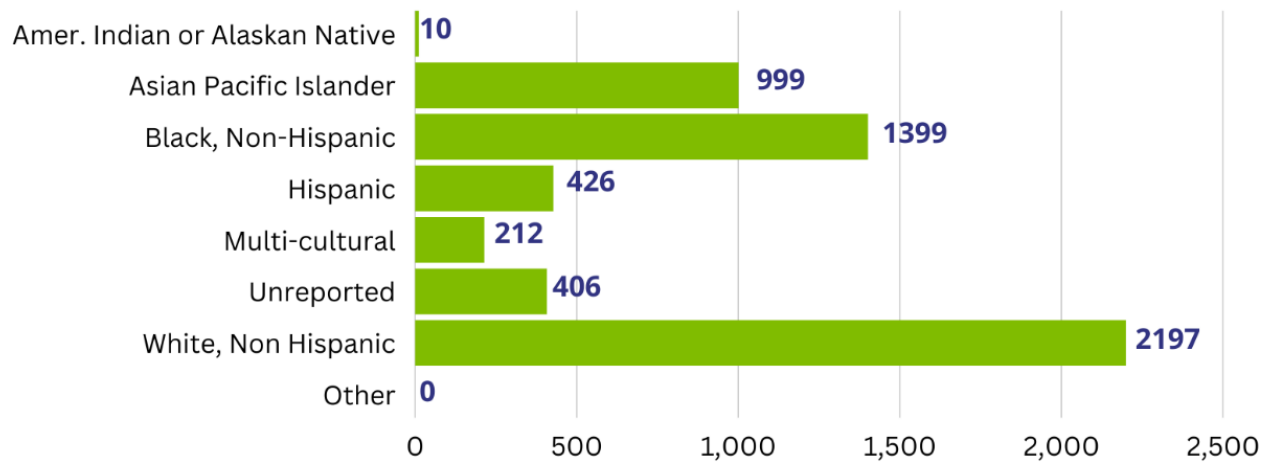
SEX



CLASSIFICATION



RACE



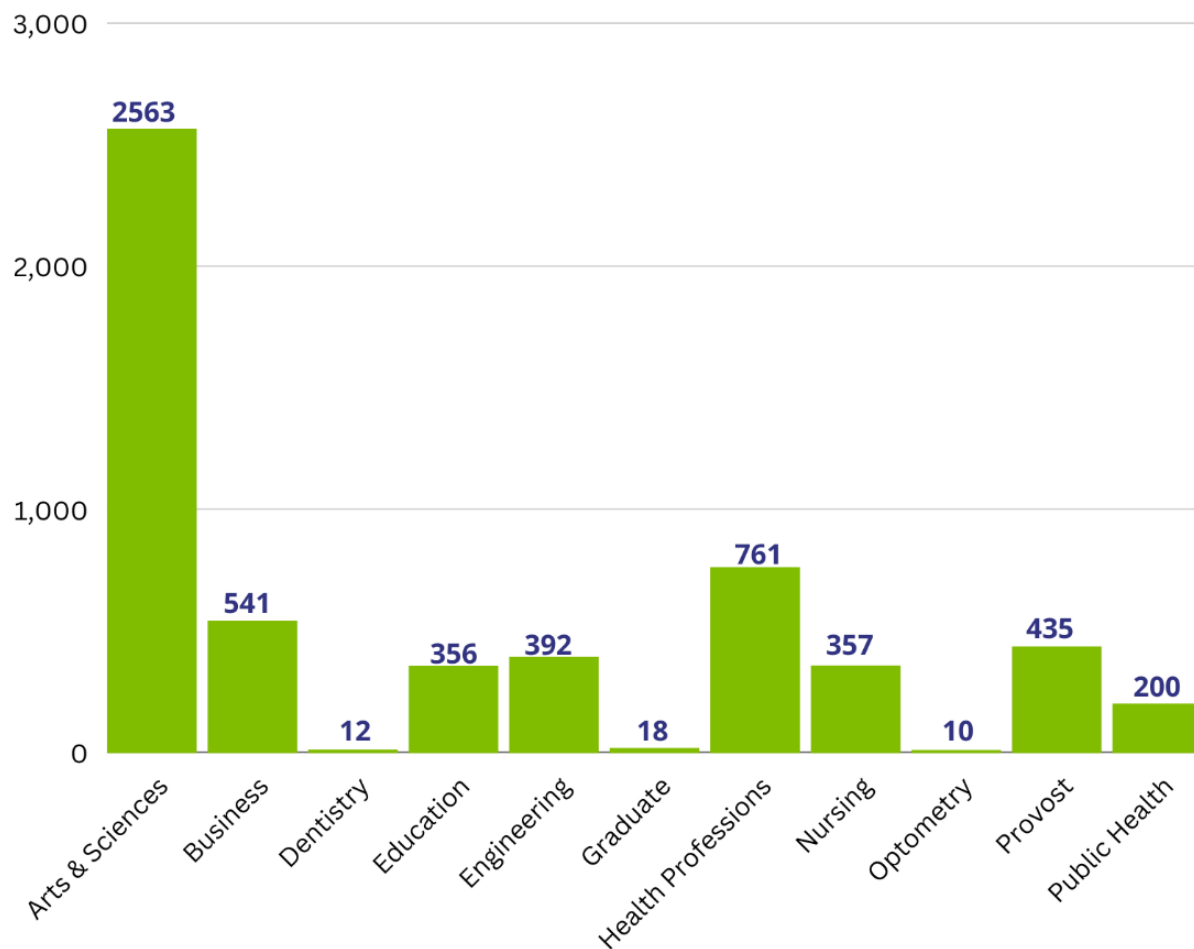


EVENTS OVERVIEW

AUGUST 2022 - DECEMBER 2022

STUDENT ORGANIZATION EVENTS: ATTENDEE DEMOGRAPHICS

PRIMARY SCHOOL OF ENROLLMENT



UAB Department Events

ENGAGE

EVENTS OVERVIEW AUGUST 2022 - DECEMBER 2022

TOTAL DEPARTMENT EVENTS

414

TOTAL EVENT ATTENDANCE

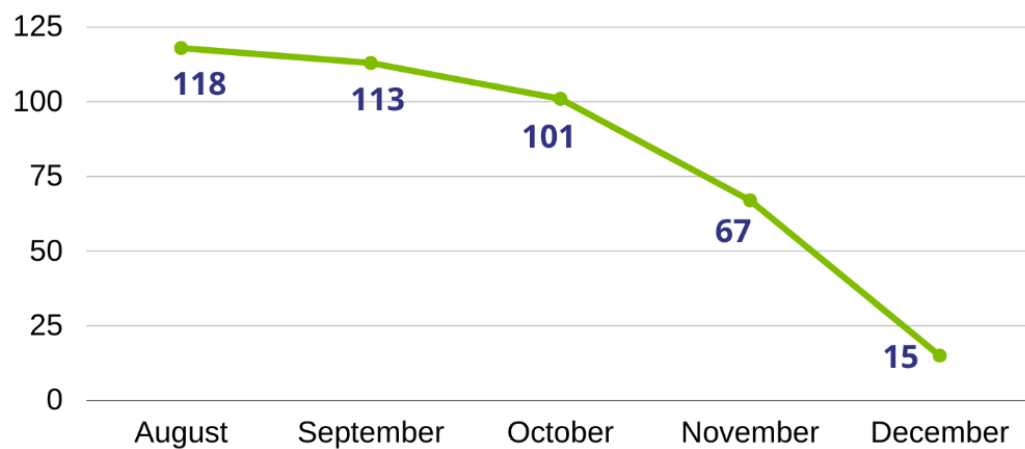
15,190*

UNIQUE ATTENDANCE

8,717*

*Please note: Attendance numbers include UAB departments who track office visitors.

DEPARTMENT EVENTS PER MONTH



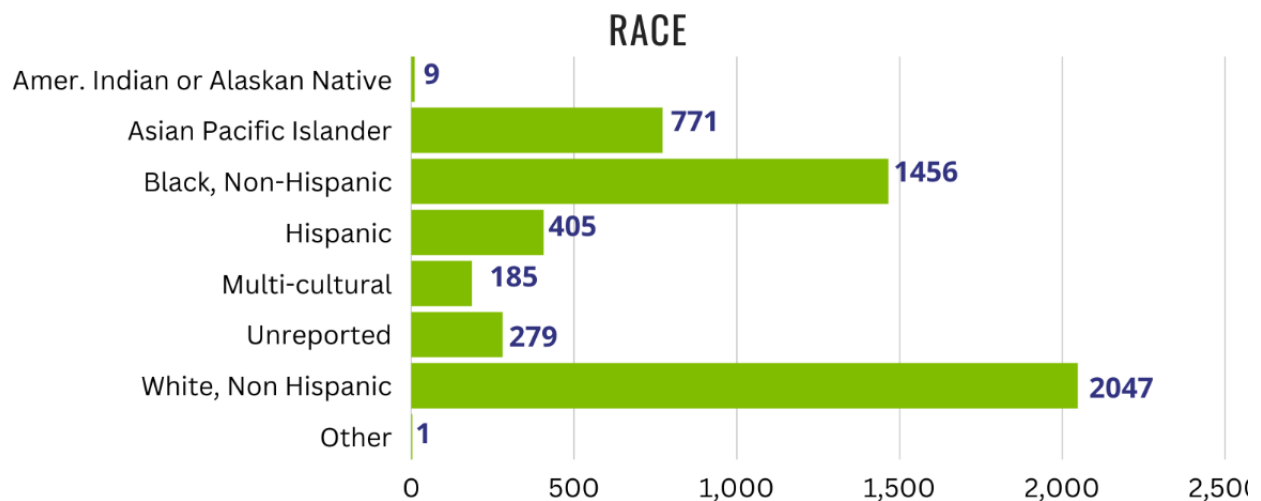
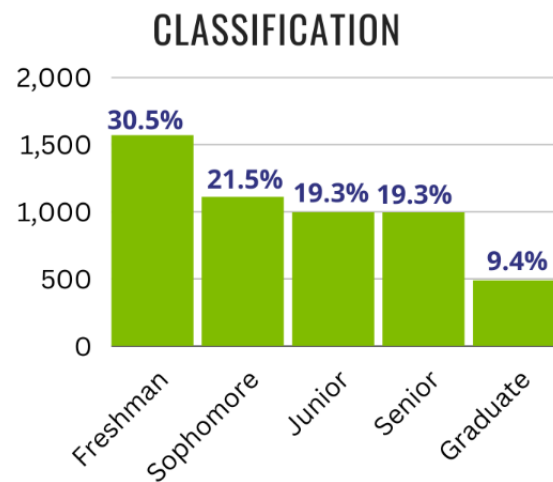
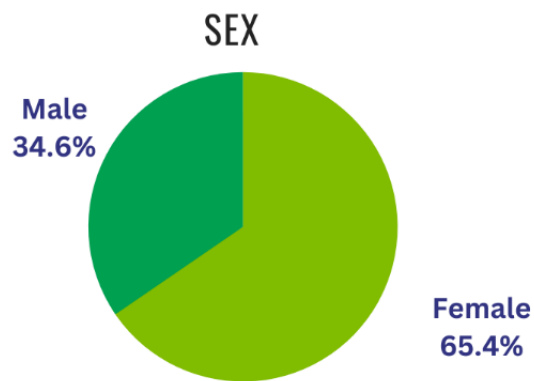
*Please note: Event numbers exclude UAB departments who track office visitors.

ENGAGE

EVENTS OVERVIEW

AUGUST 2022 - DECEMBER 2022

DEPARTMENT EVENTS: ATTENDEE DEMOGRAPHICS



FSL Fall 2022 Grade Overview:

Community & University Statistics	Overall Semester GPA	Overall Membership	Initiate Term GPA	Number Initiates	New Member Term GPA	Number New Members
All CPH	3.41	467	3.42	313	3.40	154
All IFC	3.26	268	3.26	182	3.27	86
All MGC	3.16	44	3.17	33	3.15	11
All NPHC	2.98	130	2.93	78	3.06	52
All Sorority	3.34	603	3.36	388	3.30	215
All Fraternity	3.22	306	3.19	218	3.28	88
All FSL	3.30	909	3.30	606	3.30	303
All Undergraduate Women's	3.18	7,564				
All Undergraduate Men's	3.10	4,568				
All Undergraduate	3.15	12,145				

Highest GPAs in each council

CPH: Alpha Xi Delta (3.58)

IFC: Theta Chi (3.45)

MGC: Delta Epsilon Psi (3.50)

NPHC: Alpha Kappa Alpha (3.31)

Chapters on Academic Accountability Phases Spring 2023

Alpha Phi Alpha (Academic Warning, phase 1)

Delta Sigma Theta (Academic Warning, phase 1)

Lambda Chi Alpha (Academic Probation, phase 2)

Omega Psi Phi (Academic Suspension, phase 3)

**Full grade report included as a separate attachment*

FSL Fall 2022 New Member Overview:

Interfraternity Council	86
Alpha Sigma Phi	7
Alpha Tau Omega	22
Delta Sigma Phi	11
Lambda Chi Alpha	1
Phi Gamma Delta	7
Pi Kappa Phi	10
Sigma Chi (emerging chapter)	8
Theta Chi	20
Multicultural Greek Council	11
Beta Chi Theta Fraternity, Inc.	0
Delta Epsilon Psi Fraternity, Inc.	2
Sigma Lambda Gamma Sorority, Inc.	6
Sigma Sigma Rho Sorority, Inc.	3
National Pan-Hellenic Council	52
Alpha Phi Alpha Fraternity, Inc.	0
Alpha Kappa Alpha Sorority, Inc.	0
Kappa Alpha Psi Fraternity, Inc.	0
Omega Psi Phi Fraternity, Inc.	0
Delta Sigma Theta Sorority, Inc.	50
Phi Beta Sigma Fraternity, Inc.	0
Zeta Phi Beta Sorority, Inc.	2
Sigma Gamma Rho Sorority, Inc.	0
Panhellenic Council	154
Alpha Gamma Delta	24
Alpha Omicron Pi	26
Alpha Xi Delta	24
Delta Gamma	28
Kappa Delta	26
Sigma Kappa	26
Total New Members:	303



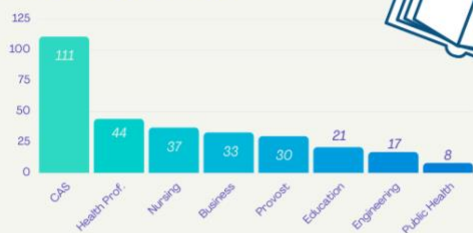
Fraternity and Sorority Life New Members

GENDER DEMOGRAPHICS

71% of our new members belong to sororities, while 29% belong to fraternities.



ACADEMIC INFORMATION



New Members by Academic School



HOUSING

68% of our students live on campus. This is a decrease of 5% from last year.

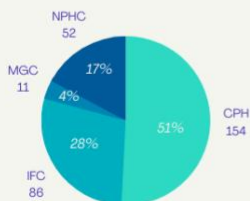


ENROLLMENT

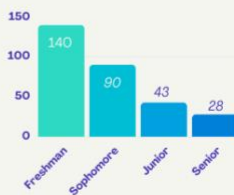
20% of fraternity and sorority members are transfer students. This is consistent with last year.



COUNCIL AND CLASSIFICATION DATA



New Members by Council



New Members by Classification

MOST POPULAR MAJORS

Pre-Nursing
Biomedical Sciences
Psychology
Neuroscience
Kinesiology

NEW MEMBER SEMESTER GPA

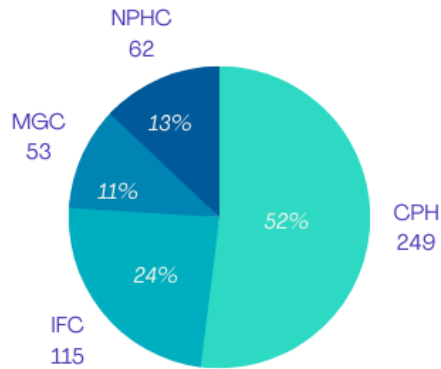
3.30

Fall 2022 FSL Event Overview:

*FSL event data included in student org event data

Chapter Events

EVENTS BY COUNCIL



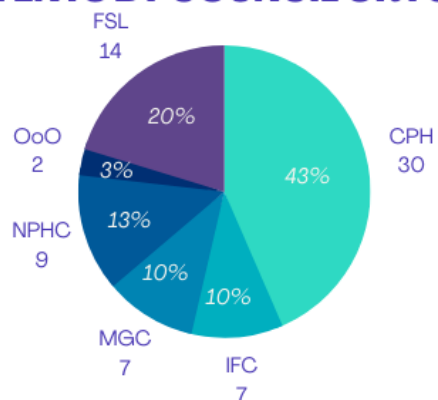
EVENTS BY TYPE

Group Business (218)
Social (135)
Learning (47)
Fundraising (39)
Service (14)
Arts & Music (5)
Cultural (1)

Fall 2022

Community & Council Events

EVENTS BY COUNCIL OR FSL



EVENTS BY TYPE

Group Business (36)
Learning (17)
Social (16)

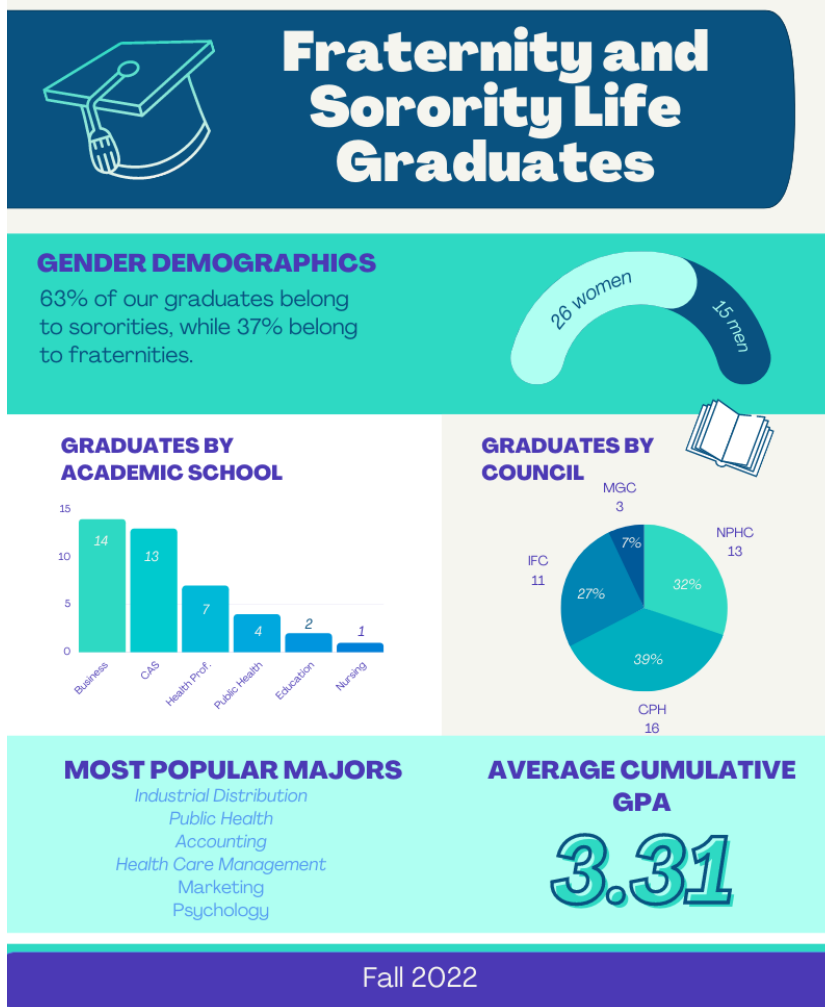
Fall 2022

FSL Organization Summary:

	Fall 2019	Fall 2020	Fall 2021	Fall 2022
CPH	6	6	6	6
IFC	10	10	9	8
MGC	5	5	5	4
NPHC	8	8	8	8
Total Chapters	29	29	28	26

- Fall 2021 – IFC fraternity Sigma Tau Gamma went inactive due to low membership numbers.
- Fall 2022 – IFC fraternity Tau Kappa Epsilon went inactive due to low membership numbers. MGC sorority Delta Phi Omega Sorority, Inc. went inactive due to low membership numbers.

FSL Graduate Overview:



Engage Data Analytics Overview:

ENGAGE

DATA ANALYTICS FALL 2022

USERS **40,169**

COMPARATIVE DATA

3%

INCREASE IN USERS
COMPARED TO FALL 2021

72% of users were reported
as "new visitors" according
to Google Analytics!

SESSIONS

91,985

COMPARATIVE DATA **4%** DECREASE IN SESSIONS
COMPARED TO FALL 2021

A SESSION IS THE TIME
PERIOD A USER IS
ACTIVELY ENGAGED WITH
THE WEBSITE.

PAGEVIEWS

581,363

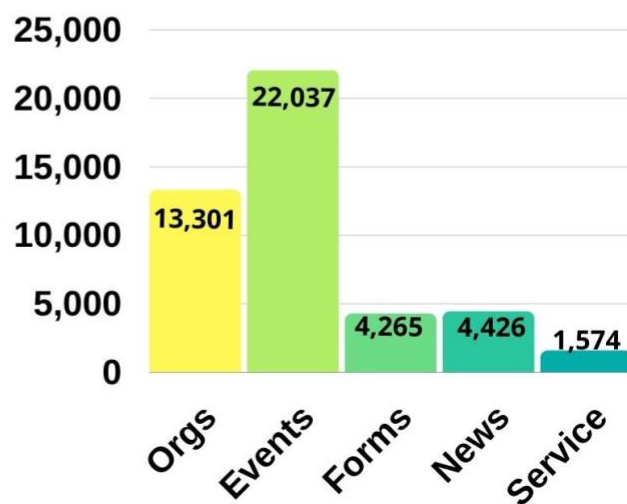
COMPARATIVE DATA **18%** DECREASE IN PAGEVIEWS
COMPARED TO AY20-21

PAGEVIEWS ARE THE
TOTAL NUMBER OF
PAGES VIEWED.

TOP 5 ORGANIZATIONS

1. USGA
a. 2,181 views
2. AKA
a. 1,524 views
3. Delta Gamma
a. 1,423 views
4. Delta Sigma Theta
a. 1,248 views
5. Active Minds
a. 1,030 views

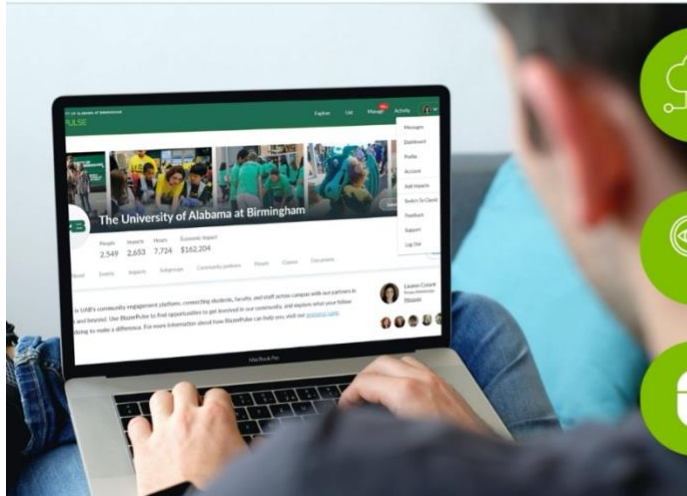
PAGEVIEWS PER TAB



BlazerPulse Overview:



Fall 2022
Google Analytics



26,058
Users

An individual who interacts with your website or app.
Each user can visit your website multiple times.



198,030
Pageviews

Pageviews are the total number of pages viewed.



45,028
Sessions

A session is the time period a user is actively engaged
with the website.



Fall 2022
Google Analytics

Top Pageviews

- 1** Habitat House Build
2,511 unique views
- 2** Blazer Kitchen
839 unique views
- 3** Rise Against Hunger
585 unique views
- 4** Little Blazer Wishes
399 unique views
- 5** Into the Streets
352 unique views

BLAZERPULSE

Fall 2022

3,221

Student Body Impacts

"Impact" is a term to describe all potential forms of community engagement. An impact can be described as funds donated, funds raised, goods donated, hours trained, and, most often, volunteer hours served.

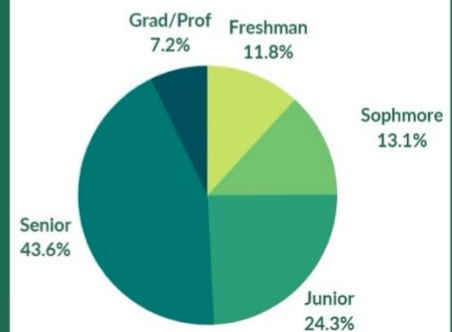
8,430

Student Body Service Hours

"Service Hours" are hours that someone has served or volunteered.

20% of the impacts reported were associated to a student organization.

Impacts by Classification



Demographics

BlazerPulse Users - Fall 2022

