

## Make my RDC Connection Bar disappear entirely

Brought to you by  
**Lisa Schwaiger**  
- DOPM HelpDesk Triage and  
Computer Tech in MT-403



This Tip of the Week was suggested/inspired by one of your co-workers (a non-IT person who works here at DOPM).

Do **YOU** have an idea for a future Tip of the Week, that others might benefit from?  
(If so, please let us know at [dopmHelp@uabmc.edu](mailto:dopmHelp@uabmc.edu) or 934-7662.)

---

### SITUATION/QUESTION:

The little bar at the top showing that I have a Remote Desktop Connection (showing the IP address) is a little annoying.

I don't need to be reminded all the time that I'm on a RDC.

A recent Computer Tip of the Week (now archived at

[https://www.uab.edu/medicine/dopm/images/Screen\\_Shot\\_2022-07-14\\_at\\_4.35.28\\_PM.png](https://www.uab.edu/medicine/dopm/images/Screen_Shot_2022-07-14_at_4.35.28_PM.png)) showed how I can make it very small, which is great.

But can I make it go away entirely?

---

### BACKGROUND:

RDC stands for Remote Desktop Connection.

Sometimes you'll hear the term "when you RDC".

That means the same as:

- "when you remote into" or
- "when you connect remotely to" a Medical Towers Computer

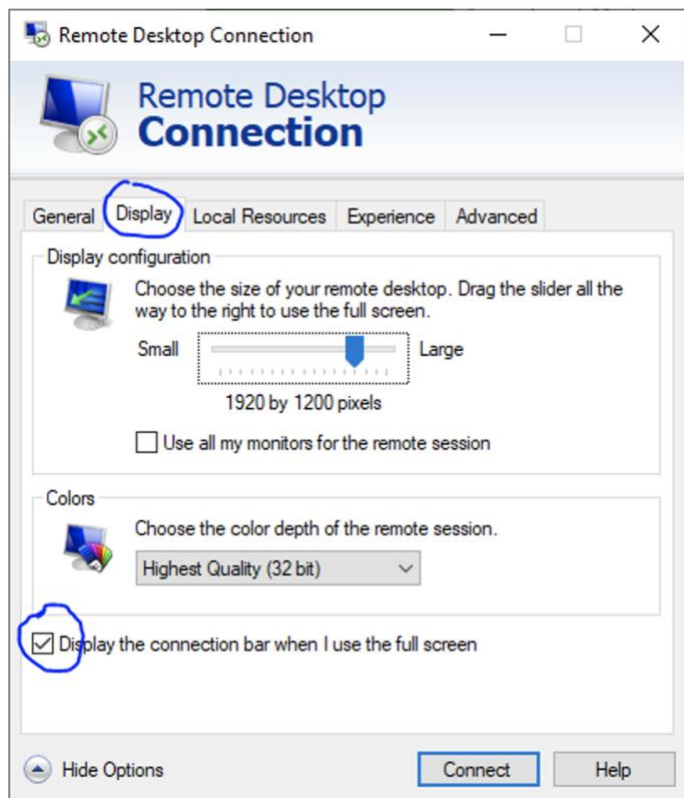
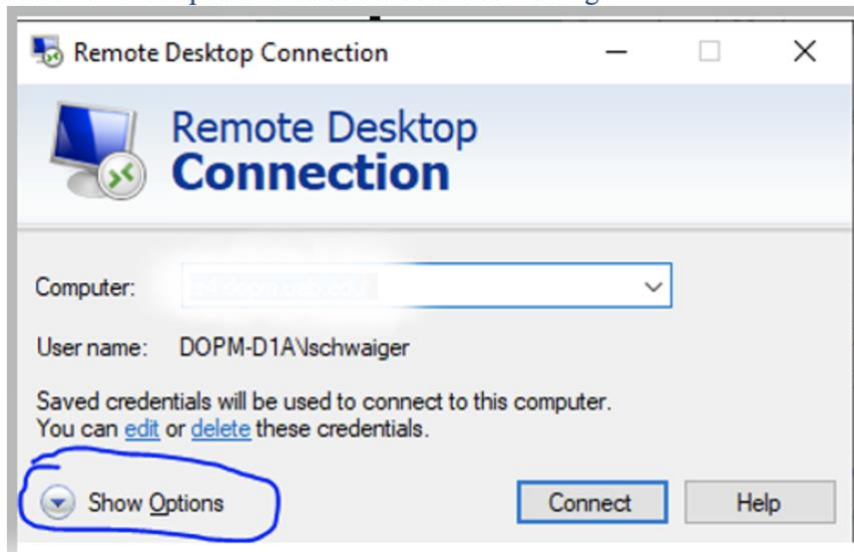
The bar showing that you are in a RDC (it shows IP address or the name of the computer you are remoting into) is called the "Connection Bar"

---

### SOLUTION/ANSWER:

Yes

Just click the 3 spots circled below before connecting:



And of course you want the checkmark to not be there.

Was this helpful? Do you have suggestions for a future Tip of the Week? Do you have any other comments?

Let us know at [dopmHelp@uabmc.edu](mailto:dopmHelp@uabmc.edu)

To see an archive of past Tips of the Week: <https://www.uab.edu/medicine/dopm/dopm-it/weekly-tips>