

From: dopmannouncement <dopmannouncement@uabmc.edu>
Sent: Thursday, January 24, 2019 4:13 PM
To: DOPM All Users <DOPMAllUsers@uabmc.edu>
Subject: Computer Tip of the Week -- Make Google my Default Search Engine

Make Google my Default Search Engine



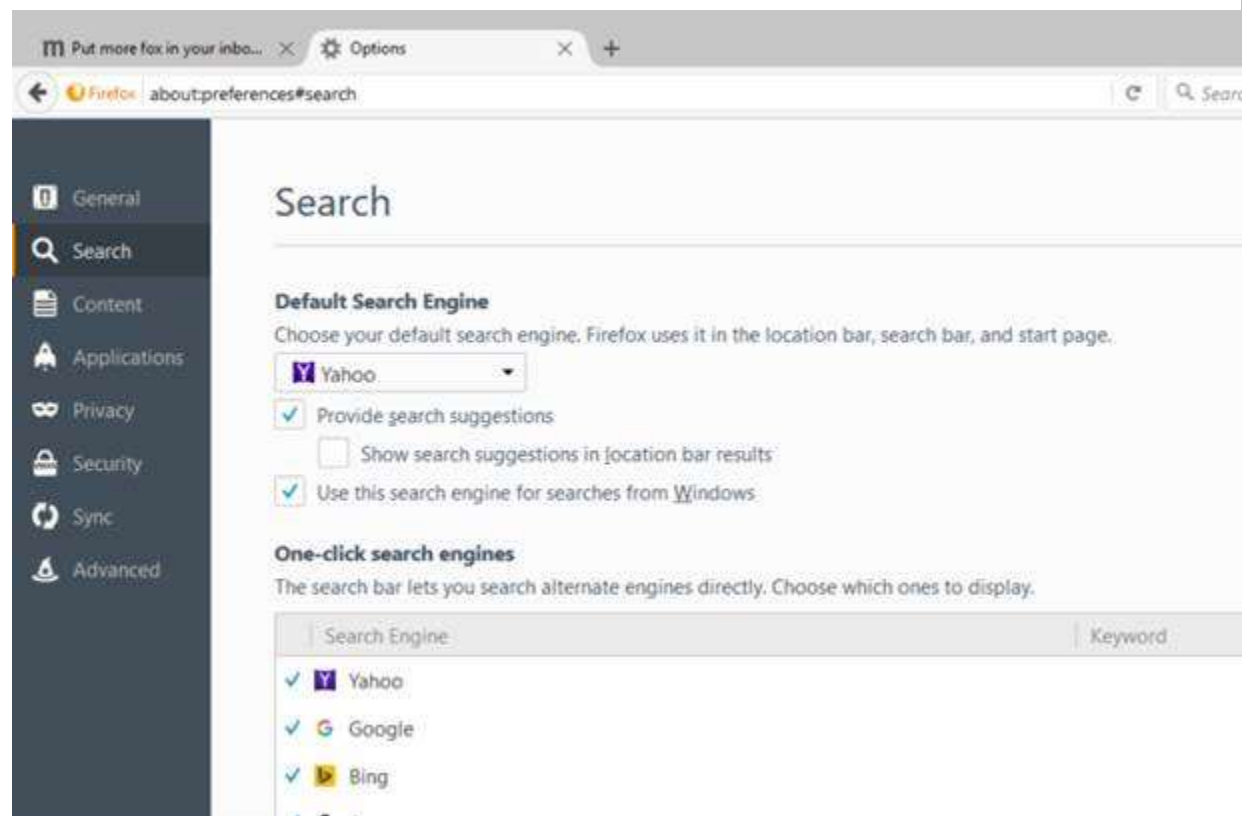
Brought to you by Adim Premani
- HelpDesk Computer Tech
(in MT-403)

SITUATION:

When I search in Firefox or Internet Explorer, it uses Bing, but I want it to use Google.

SOLUTION:

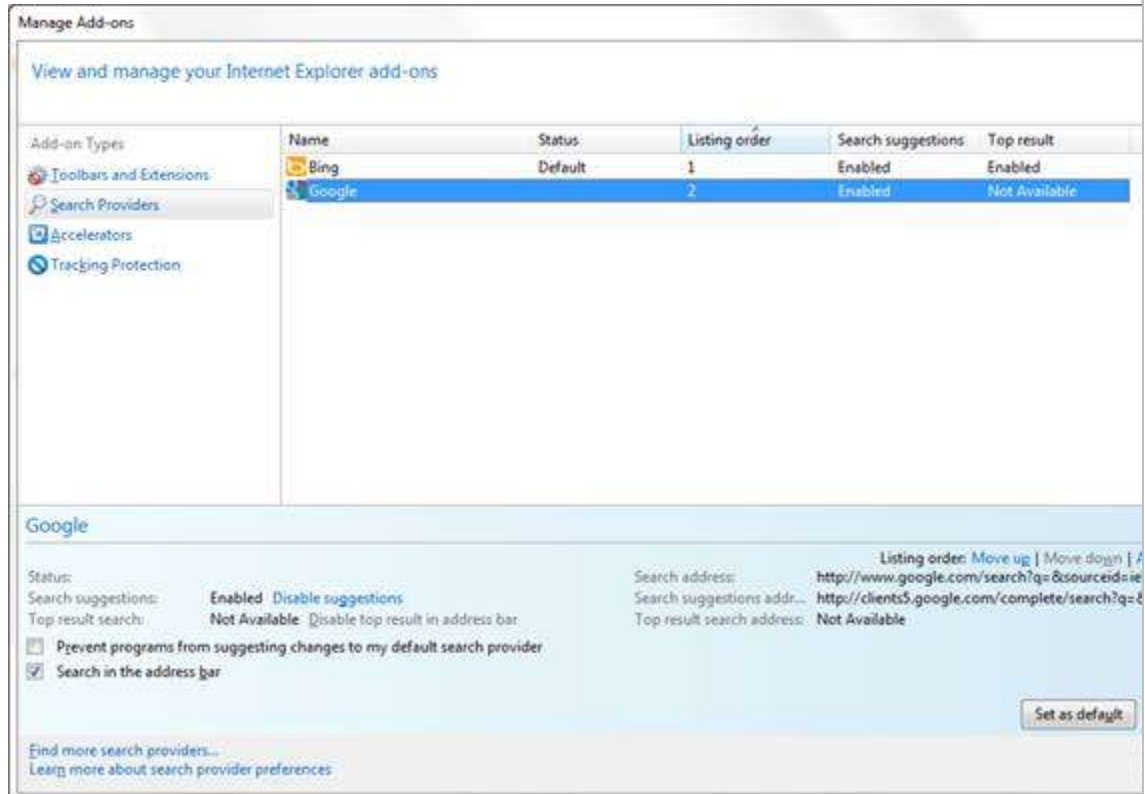
Firefox: To change your default search engine in Firefox, go to the browser, then click on the three lines in the upper right-hand corner of the window. A drop-down menu will appear, then click on “Options”. You will see the screen shown below.



Click on “Search”, then choose your preferred Search Engine (such as Google) from the “Default Search Engine” drop down menu.

Internet Explorer:

1. Open Internet Explorer.
2. At the top right, click the gear icon.
3. Click Manage add-ons.
4. At the bottom, click Find more toolbars and extensions.



5. Scroll down to the Google Search extension.
6. Click Add. To confirm, click Add again.
7. At the top right, click the gear icon.
8. Click Manage add-ons.
9. On the left, under "Add-on Types," click Search Providers.
10. On the right, click Google Search.
11. At the bottom, click Set as default.

Was this helpful? Do you have suggestions for a future Tip of the Week? Do you have any other comments?

Let us know at dopmHelp@uabmc.edu

To see an archive of past Tips of the Week: <http://www.uab.edu/medicine/dopm/help/totw>