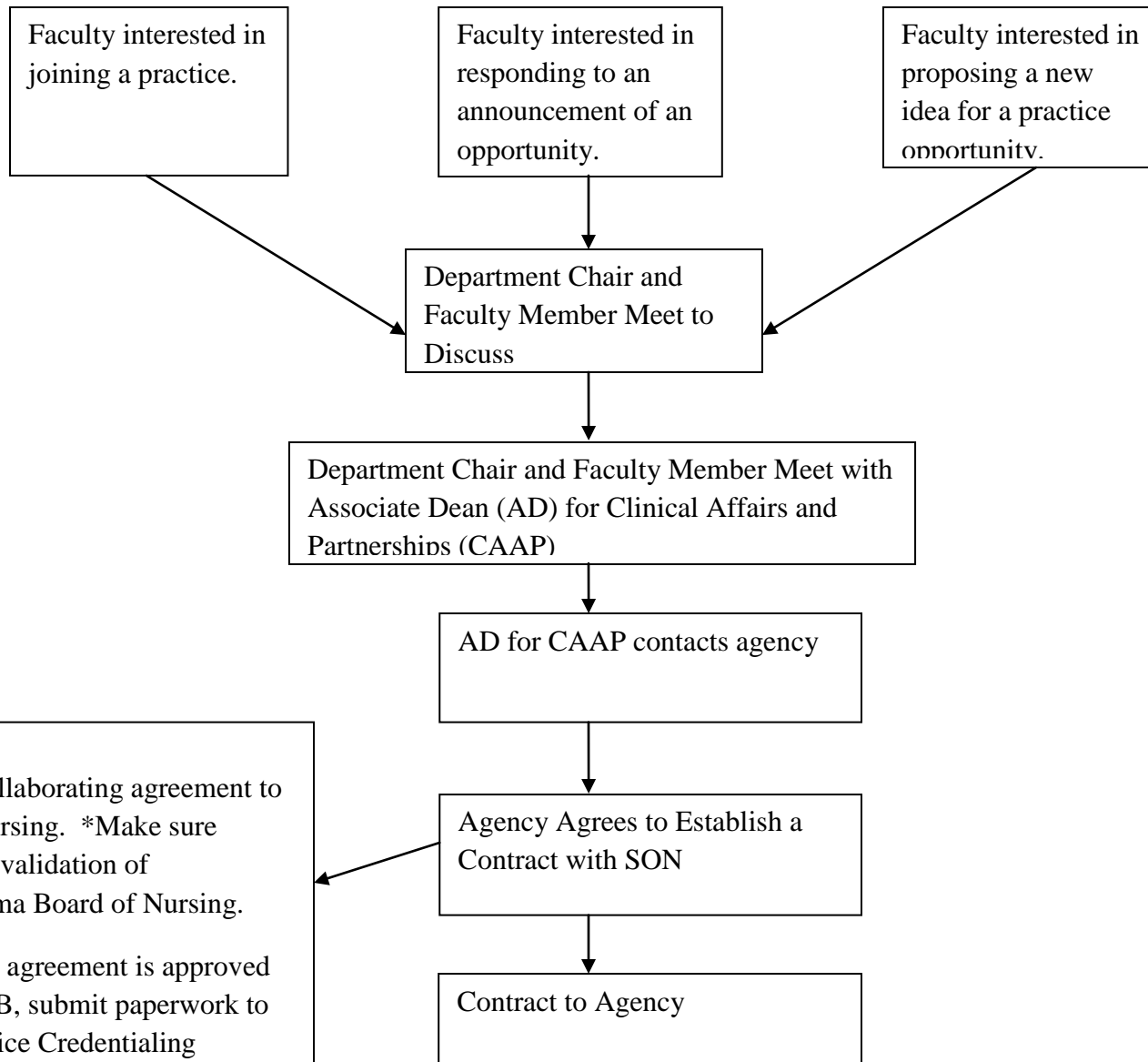


HOW TO ESTABLISH A FACULTY PRACTICE



For NP practice:

a. Faculty submits collaborating agreement to Alabama Board of Nursing. *Make sure certifying body sends validation of certification to Alabama Board of Nursing.

b. Once collaborative agreement is approved & if practice is at UAB, submit paperwork to UAB Advanced Practice Credentialing Committee.