

# WELCOME TO THE AMWA VIRTUAL SESSION FOR FEBRUARY, 2022

# THANK YOU!!!

Here is a list of all of the physicians who are mentors! Very exciting to see that now over 20 students have a new mentors.

- OBGYN - Haller Smith, Sukhamal Campbell, Ashley Wright, Sima Baalbaki, Amy Boone, JacylN Wall, Shweta Patel & Deepti Sharma
- Anesthesiology - Tekuila Carter
- Pediatric Neurology - Sarah C. Novara
- Emergency Medicine – Lauren Walter
- Family Medicine - Erin DeLaney & Ksenia Blinnikova
- Geriatrics – Emma Perez-Costas
- GI - Amanda Cartee
- Ophthalmology – Ann Marie Arciniegas-Bernal
- Orthopedic Surgery - Erin Ransom, Sara Gould & Lisa Kafchinski
- Pathology – Diana Morlote and Elizabeth Staley
- PICU – Leslie Hayes
- Surgery - Jessica Fazendin, Karin Hardiman & Britney Corey
- Radiology - Desmin Milner

# PLEASE HELP!

- Here is a list of specialties we are missing.
- Dermatology - 3
- Internal Medicine - 4
- Pediatrics - 4
- Ophthalmology - 1 more student needs mentor
- Oncology -2

# FEBRUARY 3 WAS WOMEN PHYSICIANS' DAY

“Medicine is so broad a field, so closely interwoven with general interests, dealing as it does with all ages, sexes, and classes, and yet of so personal a character in its individual appreciations, that it must be regarded as one of those great departments of work in which the cooperation of men and women is needed to fulfill all its requirements.”

ELIZABETH BLACKWELL, FIRST FEMALE U.S. PHYSICIAN, 1849

<https://www.ama-assn.org/delivering-care/health-equity/timeline-women-medicine>

- Here are some links sharing information on various women's contributions to the field of medicine:
- <https://www.uab.edu/medicine/diversity/initiatives/women/history>.
- <https://www.nps.gov/subjects/womenshistory/women-in-health.htm>
- <https://www.ama-assn.org/delivering-care/health-equity/timeline-women-medicine>
- <https://infocus.nlm.nih.gov/2018/03/01/who-am-i-women-in-medical-history/>

# Women Leading the Charge



1849

ELIZABETH BLACKWELL, MD

becomes the first woman in the U.S. with a medical degree from Geneva Medical College in New York.



1864

REBECCA LEE CRUMPLER, MD

becomes the first Black American woman to earn a medical degree.



1876

SARAH HACKETT STEVENSON, MD

becomes the first woman physician to join the AMA.

<https://www.ama-assn.org/delivering-care/health-equity/timeline-women-medicine>



1969

LOUISE C. GLOECKNER, MD

is elected AMA vice president - the highest position held by a woman in the organization to date.



1998

NANCY W. DICKEY, MD

already the first female AMA Board chair, is inaugurated as the AMA's first female president.



2008

NANCY H. NIELSEN, MD, PhD

is inaugurated as AMA president, after serving as the first female speaker of the AMA House of Delegates.

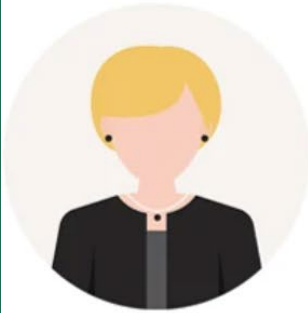
<https://www.ama-assn.org/delivering-care/health-equity/timeline-women-medicine>



**2013**

**ARDIS DEE HOVEN, MD**

becomes the 168th president of the AMA. In 2015, she was elected the first female chair of the World Medical Association.



**2018**

**BARBARA L. MCANENY, MD**

became the 173rd president of the AMA. She served as AMA Board chair as well.



**2018**

**PATRICE A. HARRIS, MD, MA**

wins office of AMA president-elect. A psychiatrist from Atlanta, she is the first African-American woman to be elected to the office.

<https://www.ama-assn.org/delivering-care/health-equity/timeline-women-medicine>



# Changing Landscape



Female physicians now make up **36%** of the work force, compared with **6%** in 1950.



Black and Hispanic women currently make up **12.6%** of the physician work force, a number that is steadily growing.



The AMA Women Physicians Section represents more than **82,000** female physicians and medical students.

<https://www.ama-assn.org/delivering-care/health-equity/timeline-women-medicine>

## AMWA session: women leaders at UAB



The American Medical Women's Association (AMWA) will host Jean Ann Larson, Ed.D., MBA, BSIE, FACHE, LFHIMSS, FIISE, for a lecture about the Momentum program and creating women leaders at UAB.

**Tuesday, Feb. 8**

**12 pm**

[Register to Attend](#)

Jean Ann Larson, EdD, MBA, BSIE, FACHE, LFHIMSS, FIISE  
Chief Leadership Development Officer, UAB Medicine |  
Senior Associate Dean for Leadership Development, School of Medicine  
Leadership Development Office  
University of Alabama Birmingham | Health System | School of Medicine  
John N. Whitaker Building | 500 22nd Street South, Suite 416 | Birmingham,  
AL 35233-3110  
C: 248-701-7056 | [jl Larson@uabmc.edu](mailto:jl Larson@uabmc.edu)

# DR. JEAN ANN LARSON

- Joined UAB Medicine in 2016 to provide expertise and resources to leaders to ensure their success and the sustainable success for all of UAB Medicine.
- She and her team work to ensure that our leaders have the mindset and skills to lead their teams and the organization into the future as well as ensuring that UAB develops a strong pipeline of leaders.
- Before coming to UAB, Dr. Larson had her own boutique leadership development consultancy in the Dallas area.
- Prior to that, she had a long career in healthcare as a senior executive at Children's Medical Center in Dallas and at Beaumont Health in southeast Michigan, where she founded an award-winning corporate university and served as the founding Chief Learning Officer.
- A native of Kansas, she attended Wichita State University where she earned a BS in engineering followed by an MBA from the Thunderbird, The Gavin School of International Management. She also graduated from Pepperdine University with a PhD in Organizational Change and Leadership.
- In addition to her educational degrees, she holds certifications in multiple types of assessments, courses and coaching methodologies.
- Dr. Larson is married to Robert Jaramillo. They have two adult daughters, Danielle of Auburn Hills, Michigan and Natalie of Austin, Texas.