

How to make your remote computer fill up both your monitors

Brought to you by
Lisa Schwaiger
- DOPM HelpDesk Triage and
Computer Tech in MT-403



This Tip of the Week was inspired by one of your co-workers here at DOPM. Do **YOU** have an idea for a future Tip of the Week, that others might benefit from? (If so, please let us know at dopmHelp@uabmc.edu or 934-7662.)

QUESTION:

I do a Remote Desktop Connection ("RDC") to a different computer. For example, at home I do a RDC to my Medical Towers computer.

My home computer has 2 screens/monitors and I would like that RDC (aka my Medical Towers computer) to fill up both those screens.

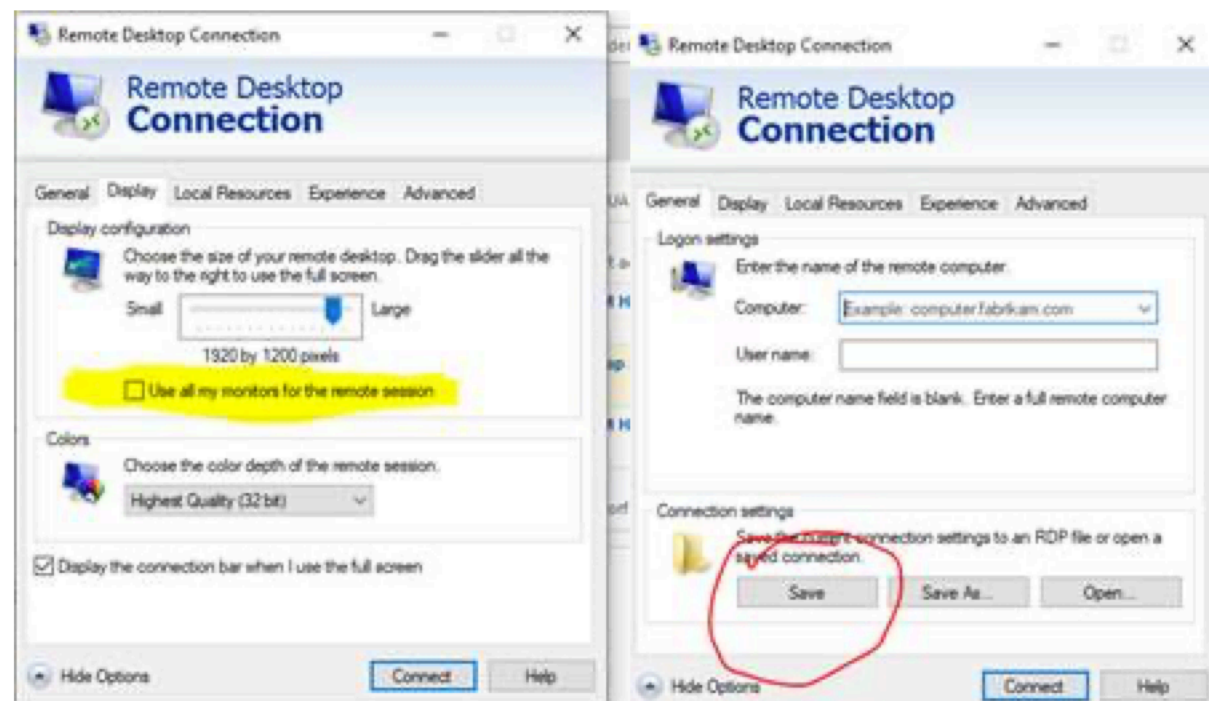
Is that possible?

ANSWER:

Yes.

On the RDC:

- go to the "Display" Tab and put a checkmark by "Use all my monitors for the remote session"
- go to the "General" tab and click the [Save] button.



If interested, see more at: <https://windowslovers.com/remote-desktop-multiple-monitors-windows-10/>

Was this helpful? Do you have suggestions for a future Tip of the Week? Do you have any other comments? Let us know at dopmHelp@uabmc.edu

To see an archive of past Tips of the Week: <https://www.uab.edu/medicine/dopm/dopm-it/weekly-tips>